



# THIS WEEK AT THE MADELEINE

Furthering the Reign of God, Where All Are Welcome • June 20-21, 2026

## The Madeleine Pastoral Council is Looking for You!

The Madeleine Pastoral Council is looking for individuals interested in discerning the intentions of the Holy Spirit as it guides the Madeleine Parish into the future. Currently the Council is developing the Pastoral Plan for the Parish, both a sacramental and administrative guide as well as a plan for focusing the parish on a deliberate mission of love and mercy in Christ.

There are no specific qualifications for Council members save a desire to serve.

Council members constitute a profile of the parish that can provide advice and assistance to Father Bonaventure in support of his pastoral services here at the Madeleine and elsewhere. All are welcome and we are particularly interested in someone who can represent the Madeleine Choir.

If you're interested, please reach out to Father Bonaventure directly or send an email to the Pastoral Council at [pastoral-council@themadeleine.edu](mailto:pastoral-council@themadeleine.edu).

## Cherries for Charity: Sample & Order This Weekend

Proceeds to St. Vincent de Paul • Pickup orders on June 28-29

The Madeleine Knights of Columbus will be selling cherries just in time for your July 4th family festivities. Proceeds go to the St. Vincent de Paul. The Bing cherries (dark sweet fruit) will be in 5.5 lb. boxes enough to please your entire Independence Day get together. The price is \$25. This fruit is export

grade and is among the biggest and best fruit produced by an Oregon Family Century farm in the Dalles. Samples will be available, and orders taken after the Masses on June 20 and June 21. Orders must be in by Tuesday, June 23. Pickup after Masses on June 27 and June 28. Quantities will be limited

## Summer Work on Campus

With the end of school comes the beginning of work on our beautiful, expansive campus. A couple of the larger projects include:

### ► Exterior painting—

Hard for some of us to believe, it's been 12 years since our campus was repainted back in 2014. So, thanks to Ken Verhaalen and his team, the campus is getting repainted again this summer! Last week was the first step...pressure washing and prep work. Additional prep work occurred this week, and painting has commenced! Same beautiful, historic color palette, just cleaner, brighter and fresher for the next decade!

### ► Interior Painting—

Also on the docket is interior painting, starting with the rectory and parish office and continuing into the school as needed.

### ► Upgraded Bathrooms—

Deacon Mike and his Facilities Team will be upgrading the bathrooms in the Parish Hall. Since these are also used by Kindergarten during the school year, they will include the addition of age- and size-appropriate fixtures for the kiddos, plus new paint, flooring and finishes

There will be more work being done, of course, but that is a start.

## Twelfth Sunday in Ordinary Time

THE GOSPEL CALLS US to acknowledge Christ without fear. It might seem that there is good reason to be afraid, but God is on our side as a mighty champion. Protected by his almighty power, we have no cause for fear. His providence covers all things, from the little birds we hear about in today's Gospel to the grand sweep of salvation history outlined in the second reading.

### Pray For Our Faithful Departed

- Sherrill Resch
- Frank Galluzzo
- Deborah (Hulscher) Kneeland
- Bill Doctor
- John Seeronen

### Prayer Requests

For those who are ill or in need of our prayers

- Carol McMenamin
- Ruthie Wieber
- Julie Masson
- Kevin McMenamin
- Chris Mealy
- David Hendrickson
- Griff Marshall
- Kait Skyler
- Trish Grantham
- Kitt & Corinne Jordan
- Ann Czuba
- Jean Mitchell

### Mass Intentions

- 06/20, Sat . . . . . Alan Morrill †
- 06/21, Sun 8:00 am . . . Madeleine Community
- 10:00 am . . . . . Deborah Kneeland †
- 06/23, Tues . . . . . No Mass Today
- 06/24, Weds . . . . . No Mass Today
- 06/25, Thurs . . . . . No Mass Today
- 06/26, Fri . . . . . No Mass Today
- 06/27, Sat . . . . . John Nguyen †
- 06/28, Sun 8:00 am . . . Madeleine Community
- 10:00 am . . . . . Richard Feeny

*Save The Date*  
**Celebrate St. Mary Magdalene.**  
*July 18 • Mass + Picnic in Parish Courtyard*




## Happy Father's Day

## Calendar This Week

### 21 June • Sunday

- ▶ Father's Day
- 8 am: Mass—Church
- 10:00 am: Mass—Church  **ALSO LIVESTREAMS**

### 22 June • Monday

- 6 pm: Greg Ewer—Church
- 6:30 pm: FA Meeting—St. Catherine Room

### 23 June • Tuesday

- ▶ No Mass Today
- ▶ No Adoration Today
- 9:30 am: OCIA Meeting—Fireside Rm
- 6 pm: Greg Ewer—Church

### 24 June • Wednesday

- ▶ No Mass Today
- 6 pm: Greg Ewer—Church
- 6 pm: OCIA Meeting—Fireside Rm

### 25 June • Thursday

- ▶ No Mass Today
- 2 pm: Greg Ewer—Church


### 26 June • Friday

- ▶ No Mass Today
- 3:30 pm: Foundations of Faith—Fireside Rm
- 4:30 pm: Wedding Rehearsal—Church

### 27 June • Saturday

- 2 pm: Wedding - Marin Kennedy & Jack Imelio
- 4 pm: Confession—Church
- 5 pm: Mass—Church

### 28 June • Sunday

- 8 am: Catholic Worker: Living Communion Info Sessions—Fireside Rm
- 8 am: Mass—Church
- 10:00 am: Mass—Church  **ALSO LIVESTREAMS**

## Daily Mass—June 23-26

Due to vacations, there will be no daily Masses June 23–26. Also there will be no Adoration on June 23.

## Upcoming Events

- ▶ **Feast of St. Mary Magdalene + Parish Picnic:** July 18
- ▶ **Haitian Project Garage Sale:** July 30–August 1 [www.themadeleine.edu/haitian](http://www.themadeleine.edu/haitian)
- ▶ **Advent Begins:** November 29
- ▶ **Madeleine Marketplace:** December 11
- ▶ **Lent 2027:** February 10
- ▶ **Easter 2027:** March 28

## PARISH LIFE

## Parent-Led Confirmation... Please Let Us Know Your Thoughts

The Madeleine Parish is currently gauging interest in a Parent-led model of Confirmation preparation for the 2026-27 school year.

- What this would look like:
- ▶ Parents cover a set of required lessons with their child before the Confirmation mass which is usually sometime in the Spring. Parents receive instructions to purchase materials upon registration.
  - ▶ Parents and Confirmandi meet as a class once a month for support with lessons, community building, and small group conversations.
  - ▶ Confirmandi attend a Confirmation retreat

offered by The Madeleine sometime before the sacrament.

- ▶ Parents and students attend at least one Mystagogy meeting sometime after the Confirmation Mass to reflect on the sacrament as a class.

We plan to return to offering an in-person, catechist-led model in the 2027-28 school year.

If you are interested in Confirmation for your child this year according to the model described above, please reach out to Lauren Craig at [lcraig@themadeleine.edu](mailto:lcraig@themadeleine.edu) for more information.

## OCIA Candidates and Catechumens— What's the Difference?

While you might hear the two terms used interchangeably at times, there is a difference!

Catechumens are those who are not baptized and seeking to become Catholic. They begin their preparation- known as the Pre-Catechumenate- no less than one year before they enter the Catechumenate. They then undergo formation and a series of rites with the parish community before receiving the sacraments of Baptism, Confirmation, and Eucharist at the Easter Vigil Mass. If you are not baptized and want to know more, reach out to our OCIA team now!

Candidates are those who were baptized Christian but not Catholic and are seeking to

come into Full Communion with the Catholic Church. They participate in formation to discern and learn more of the specific teachings of the Catholic faith while also participating in the life of the parish. Candidates can come into the Church as soon as they are ready, during any season. If you're baptized and believe you need to wait until next Easter to come into the Church, you may be mistaken! Reach out to our team to learn more.

Unbaptized? Baptized and want to become Catholic? Baptized Catholic and missing sacraments? Contact Lauren Craig at [lcraig@themadeleine.edu](mailto:lcraig@themadeleine.edu) for more information.

## Madeleine Book Club

Would you enjoy opportunities to meet with our enthusiastic readers to share in genial discussion/debate about some very excellent books? If so, you are most cordially invited to join our group! To be added to our email list, please contact our MBC coordinator: Gretchen Stevenson, [gypsyfrau47@yahoo.com](mailto:gypsyfrau47@yahoo.com) or 503-312-6834.



## First Reconciliation, First Communion Registration Open

Registration for First Reconciliation and First Communion is LIVE for the 2026-27 school year. Plus, save the date on your calendar- we will kick off this year's sacramental prep with a Meet and Greet on Sunday, September 13 after the 8am mass. Our full schedule will be available on the Madeleine website soon. Registration forms are available at [themadeleine.edu/site/sacraments](http://themadeleine.edu/site/sacraments) and can be emailed to [sac-prep@themadeleine.edu](mailto:sac-prep@themadeleine.edu) or dropped off at the parish office. Email Lauren Craig with questions.



**In the Gospel today, we hear Jesus say:** "Everyone who acknowledges me before others I will acknowledge before my heavenly Father." This week, know that you will bring hope to the poor by your gift to the Society of St. Vincent de Paul. Thank you.

Lisa Hawkins, (503) 309-7968 • **Emergency Services Client phone: (503) 235-8431**

# Living Communion: Redeeming Interest-Bearing Debt in a Eucharistic Community

Sunday, June 28 after 10 am Mass • Fireside Room

Join Emma and Bert from the Simone Weil Catholic Worker as they lead an info session on their Living Communion project and what it could look like within our parish community.



The Living Communion Initiative is a community living as the Body of Christ through practical Scriptural frameworks for treating each other like (God's) family. We start with the ultimate expression of God's familial

In partnership with Notre Dame Federal Credit Union, Bert and Emma developed and piloted a model that allows parish communities to act as subsidiary credit union communities empowered to approve loans without reference to credit score, and guarantee them for one another at 0% interest. To date, they've trained 4 parish communities in this practice.

love in Christ – redemption – by taking on the Biblical obligation to prevent and redeem each other's precarious debt. Building from the logic of this practice, parishes/communities can live into the relational structure of the corporate Body of Christ, in all its challenge to our anonymizing, extractive economic default.

Scan code above to learn more.



## Next Laudato Si Circle Gathering is June 28

Is global warming real? Can we do anything about it?

Please consider joining one or more of our monthly Laudato Si Gatherings by Zoom for prayer, fellowship, to share good news and practical action plans.

We plan to meet this year after Sunday 10 am Mass at 11:45 pacific on: 6/28, 7/26, 8/30, 9/27, 10/25, 11/29.

For Zoom links, questions, comments or info contact Bill Hunter, [wiliamjhunterjr@gmail.com](mailto:wiliamjhunterjr@gmail.com) or text to (502) 419-5705.

## You Can Help Your Marriage

Do you feel alone? Are you frustrated or angry with each other? Do you argue ... or have you just stopped talking to each other? Does talking about it only make it worse? Retrouvaille helps couples through the most difficult times in their marriages. This program has helped 10s of 1000s of couples just like you experiencing marital difficulties.

If you feel like your world is falling apart... We did too.

Join Oregon Retrouvaille as we host a working weekend for couples struggling in their marriages by couples who have been there in the struggle. Come August 21-23 in Canby, Oregon.

For confidential information or to register for the program call 1-800-470-2230, or 1-503-225-9191 or email: [Oregon@helpourmarriage.org](mailto:Oregon@helpourmarriage.org) or visit [www.helpourmarriage.org](http://www.helpourmarriage.org)

# FOUNDATIONS of FAITH

*A Journey Through the Catechism of the Catholic Church*

The Madeleine Parish invites you to join us for a new faith formation series from Ascension Press, offered on Fridays in Ordinary Time.

Meet in the Main Church at 3:30pm for prayer and move to the Fireside Room for a potluck supper, fellowship, and faith formation.

**Miss our first session? No problem! Series continues through October. Join anytime! Find materials and catch up at [ascensionpress.org](http://ascensionpress.org)**

Email [lcraig@themadeleine.edu](mailto:lcraig@themadeleine.edu) with questions or if you'd like to know what food/drink to bring!

## Weekly Mass Times

### Regular Mass Times:

Tuesday, Wednesday, Friday . . . . . 8:30 am  
 Thursday . . . . . School not in session: 8:30 am  
 School Thursdays: 2:00 pm  
 Saturday Vigil . . . . . 5:00 pm  
 Sunday . . . . . 8:00 am, 10:00 am

**Penance** . . . . . Saturday, 4:00-4:40 pm  
**Adoration** . . . . . Tuesdays, 9:00 am-2:00 pm

## Parish Office

**Hours** . . . . . Tuesday-Friday, 9:00 am-3:00 pm  
**Phone** . . . . . 503-281-5777  
**School Office** . . . . . 503-288-9197

## Parish Staff

- Rev. Bonaventure Rummell**—Administrator  
[fatherbonaventure@themadeleine.edu](mailto:fatherbonaventure@themadeleine.edu), ext. 111
- Rev. Nazario Atukunda**—In Residence
- Deacon Mike O'Mahoney**—Permanent Deacon  
[deaconmike@themadeleine.edu](mailto:deaconmike@themadeleine.edu)
- Jenn Langhus**—Interim School Principal  
[jlanguh@themadeleine.edu](mailto:jlanguh@themadeleine.edu) . . . 503-288-9197
- My Schoning**—Business Manager  
[mhoang@themadeleine.edu](mailto:mhoang@themadeleine.edu) . . . . . ext. 114
- Linda Scheurman**—Bookkeeper  
[lscheurman@themadeleine.edu](mailto:lscheurman@themadeleine.edu) . . . . . ext. 119
- Maria Manzo**—Director of Music  
[mmanzo@themadeleine.edu](mailto:mmanzo@themadeleine.edu) . . . . . ext. 113
- Lauren Craig**—Faith Formation/Sacramental Prep  
[lcraig@themadeleine.edu](mailto:lcraig@themadeleine.edu) . . . . . ext. 116
- Minh-Ha Nguyen**—Parish Admin Assistant  
[mhnguyen@themadeleine.edu](mailto:mhnguyen@themadeleine.edu) . . . . . ext. 112
- Julie Kupers**—Special Events  
[jkupers@themadeleine.edu](mailto:jkupers@themadeleine.edu) . . . 720-936-5635
- Dcn. Mike O'Mahoney**—Facilities Supervisor  
[deaconmike@themadeleine.edu](mailto:deaconmike@themadeleine.edu)
- Rich Hammons**—Director of Communications  
[rhammons@themadeleine.edu](mailto:rhammons@themadeleine.edu) . . . . . ext. 129

## Sacraments

- Infant Baptism**—Lauren Craig  
[lcraig@themadeleine.edu](mailto:lcraig@themadeleine.edu) . . . . . ext. 116
- First Reconciliation, First Eucharist**—  
 Anne O'Mahoney  
[sac-prep@themadeleine.edu](mailto:sac-prep@themadeleine.edu)
- OCIA** (formerly RCIA)— Lauren Craig  
[lcraig@themadeleine.edu](mailto:lcraig@themadeleine.edu) . . . . . ext. 116
- Marriages** . . . . . Fr. Bonaventure, ext 111
- Anointing** (Emergency) . . . . . 971-301-4421
- Funerals**—  
 Therese Fenzl . . . . . [tfenzl@themadeleine.edu](mailto:tfenzl@themadeleine.edu)

## Councils & Contacts

- Pastoral Council**—Dan O'Brien  
[pastoral-council@themadeleine.edu](mailto:pastoral-council@themadeleine.edu)
- Finance/Admin**—John Garrow . . 503-803-5693
- Buildings & Grounds**—Erin Couch, 503-281-9575
- School Advisory**—Emily Fellman, 503-752-4143
- Facility Requests**—[themadeleine.edu/facilities](http://themadeleine.edu/facilities)
- Maintenance Requests**—My Schoning  
[mhoang@themadeleine.edu](mailto:mhoang@themadeleine.edu) . . . . . ext. 114
- Knights of Columbus**—  
 Dan O'Donnell . . . . . 503-440-9415
- Ministry Schedule**  
[www.themadeleine.edu/minister-schedule](http://www.themadeleine.edu/minister-schedule)
- Bulletin submissions due 5:00 pm Tuesday**  
 Email to [bulletin@themadeleine.edu](mailto:bulletin@themadeleine.edu)

## You Can Help Your Marriage

Do you feel alone? Are you frustrated or angry with each other? Do you argue ... or have you just stopped talking to each other? Does talking about it only make it worse? Retrouvaille helps couples through the most difficult times in their marriages. This program has helped 10s of 1000s of couples just like you experiencing marital difficulties.

If you feel like your world is falling apart... We did too.

Join Oregon Retrouvaille as we host a working weekend for couples struggling in their marriages by couples who have been there in the struggle. Come August 21-23 in Canby, Oregon.

For confidential information or to register for the program call 1-800-470-2230, or 1-503-225-9191 or email: Oregon@helpourmarriage.org or visit www.helpourmarriage.org.

## Lay Women's Silent 8-Day Retreat

Our Lady of Peace Retreat is pleased to announce that Fr. Dan Pattee, TOR, will be the retreat master for our annual Sisters and Lay Women's Silent, Eight-Day Retreat. This retreat will be held from June 16-24, 2026. The theme is from Article 32 of the Franciscan Rule: "Let the sisters and brothers always be mindful that they should desire one thing alone, namely, the Spirit of God at work within them." We still have a few rooms available for those wishing to join us for this period of spiritual reflection. Please see the registration details below:

- ▶ Full Retreat Cost: \$700.00
- ▶ Partial Stays: Available upon request

For more information or to register, please visit www.olpretreat.org, call the retreat house at 503-649-7127 or email sisters@ol-pretreat.org.

## WorldWide Marriage Encounter

(MT 9:9) ...he saw a man named Matthew. And he said to him, "Follow me." And rising up, he followed him. Learn how to increase trust in your spouse by attending the next Worldwide Marriage Encounter Experience on July 31, 2026, in Beaverton, Oregon. To apply for your WWME Experience or search other dates go to [rediscoverthespark.org](http://rediscoverthespark.org). For information about WWME call 503-704-0836 or by email at [reservations@rediscoverthespark.org](mailto:reservations@rediscoverthespark.org)

## Reminder on Second Collections...Schedule Changes from the Archdiocese

A reminder that the Archdiocese has mandated a change to our second collections schedule.

Instead of frequent in-pew second

collections, we will have just a few second-collection dates throughout the year, and a big omnibus date for the national collections on July 12.

### 2026 Second Collection Schedule:

- ▶ **April 18-19:** Archbishop's Catholic Appeal
- ▶ **July 12:** Combined Collection Appeal
  - ▷ Archdiocese of Military Services
  - ▷ Black & Indian Mission
  - ▷ Catholic Communication Campaign
  - ▷ Catholic Home Missions
  - ▷ Catholic Relief Services
  - ▷ Catholic Campaign for Human Development
  - ▷ Church in Central & Eastern Europe
- ▷ Church in Latin America
- ▷ The Holy Father/Peter's Pence
- ▷ Holy Land
- ▷ Retirement Fund for Religious
- ▷ Solidarity Fund for the Church in Africa
- ▷ The Catholic University of America
- ▷ World Missions Sunday
- ▶ **September 26-27:** Seminarian Appeal
- ▶ **November 7-8:** Catholic Charities Appeal.

## Advertise in the Parish Bulletin

It's one of the best kept secrets and biggest bargains in the area...Madeleine Parish Bulletin Advertising. The back page of your weekly bulletin is a great place to get the word out to our parish community of your goods or services. With the turnover of the new year, we have a few spaces available.

▶ **Affordable**—Starting at just \$220 per full year (January 1 through December 31). Of course, we'll prorate for anyone joining mid-year.

▶ **Versatile**—Many sizes available...based on our "single" size module, you can stack it two or three high, stretch it two or three wide... or more if space allows...whatever size you need to get your brand's message across to our readers.

▶ **Relatable**—Members of The Madeleine community tend to be very loyal to their fellow parishioners. By advertising in the bulletin, you're demonstrating that you're an integral part of this parish community.

▶ **Good Company**—On the back of our bulletin are some of the stalwart companies in our parish and community. Several familiar names have been with us for decades...isn't it time you joined them?

Contact Rich Hammons, Director of Communications, at [bulletin@themadeleine.edu](mailto:bulletin@themadeleine.edu)

**Single: 1 7/8" x 7/8"**  
**July-Dec: \$146**  
**Full Year: \$110**

**Double Stretch: 1 7/8" x 1 3/4"**  
**July-December: \$188 • Full Year: \$375**

**Double Tall:**  
**1 7/8" x 1 3/4"**  
**July-Dec: \$250**  
**Full Year: \$188**

**Church Cleaning Ministry: June 15**

**1-3 pm, first & third Monday each month**

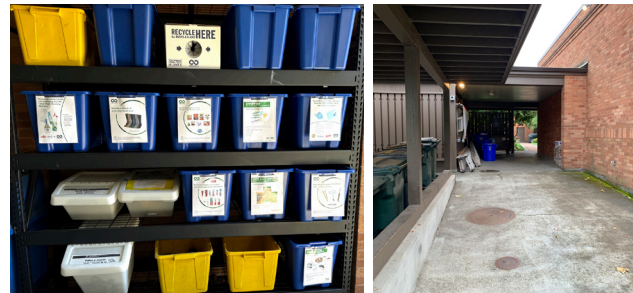
Your help is needed! Two Mondays a month, our Church Cleaning Ministry gathers to give the church...especially the Altar area...a thorough cleaning. **Church cleaning continues every first and third Monday of the month from 1-3 pm.** June 15 July 6 are the next two dates. No permanent commitment is expected and plenty of cleaning supplies are provided. Please enter at the side door of the church.

## RECYCLING PROGRAMS AT THE MADELEINE

Marked collection bins in the breezeway facing 23rd Ave.

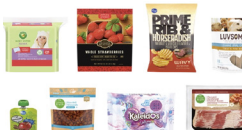
The Madeleine's Laudato Si' Circle and Care for Creation Ministry have joined with U. S. based recycler, Terracycle, to offer our parish, school, and community opportunities to responsibly recycle specific items (primarily plastics) not generally handled at curbside. Terracycle has added more manufacturers to its program, and in turn, we have expanded our recycling offerings. Here is a current listing of what we are collecting. Please keep this in mind:

- ▶ Do not include garbage or items not specifically mentioned in the descriptions.
- ▶ Empty containers of contents. No need to wash first; ensure packaging is dry.



### KROGER FLEXIBLE PLASTICS

All Kroger brand flexible plastic packaging can now be accepted. Includes Private Selection and Simple Truth brands as well.



### DRINK POUCHES, ALL BRANDS

All drink pouches are accepted! Please remove as much of the remaining product as possible.



### FABRIC CARE PRODUCTS & PACKAGING

From Tide, Gain, Downy, NBD and Dreft, including plastic components (dispensing cup, bag, nozzle, nozzle clip), and plastic packaging wrap, flexible plastic bags, rigid plastic tubs and lids, and Tide To Go pen.



### GILLETTE® AND VENUS RAZORS AND RAZOR BLADES

All brands of blades and razors (systems and disposable units, and replaceable-blade cartridge units), rigid plastic packaging, and flexible plastic bag packaging.



### ORAL CARE PRODUCTS

All brands of used or empty oral care products, including toothpaste tubes, tooth brushes, and dental floss containers.



### USED ATHLETIC SHOES (PAIRS ONLY)

We are pleased to offer for recycling or reuse any athletic shoes you no longer need. It's very important that only athletic shoes are provided, and only in pairs—we cannot accept any non-athletic footwear of any kind, including but not limited to dress shoes, heels, sandals, wedges, water socks, rain boots, crocs, or other non-athletic styles.

### AIR CARE PRODUCTS AND PACKAGING AND MR. CLEAN DEEP CLEANING MIST

All brands of air and home care cartridges, air and home care plugs, air and home care trigger heads, and air and home care plastic and film packaging. No aerosol containers. Remove remaining product.



### SWIFFER REFILLS

Swiffer only brands of Sweeper™ Dry, Wet, and XL Refills, WetJet Refills™, and Duster™ Refills.



**gotsneakers?**  
A Sneaker Recycling Organization



Details on all programs at  
[www.themadeleine.edu/terracycle](http://www.themadeleine.edu/terracycle)

THE MADELEINE PARISH 25<sup>TH</sup> ANNUAL  
**The Haitian Project  
Garage Sale**

**SALE DATES**

- **Friday, July 31**, 9 am–3 pm
- **Saturday, August 1**, 9 am–3 pm
- **Sunday, August 2**, 9 am–1 pm  
*(50% off day, \$5 per bag of clothing day)*



**DROP OFF DONATIONS  
AT THE MADELEINE PARISH HALL**

- Monday, July 20– Tuesday, July 28, 9 am–3 pm
- 3123 NE 24th Ave, Portland

**VOLUNTEER OPPORTUNITIES**

**July 18**

Load trucks @ storage units from 9 am–12 pm (*20 volunteers*)

**July 19**

Unload trucks @ The Madeleine after Mass,  
approx. 9:30 am–3 pm (*20-40 volunteers*)

**July 20–July 30**

Daily set up, and pricing, 9 am–3 pm (*20-40 volunteers*).  
On Sundays we will begin at 9:30 after Mass.

**July 31–August 2: SALE DAYS!**

Friday and Saturday 9 am–3 pm, Sunday 9 am–1 pm

**August 2**

Sale tear down begins at 1:00 pm (*40 volunteers*)

**Questions? Megan Callahan, 503-806-6871, [meganm1979@yahoo.com](mailto:meganm1979@yahoo.com) or  
Steve Holmes, 503-706-7937, [steveholmes@shtrucking.com](mailto:steveholmes@shtrucking.com)**

“The Eucharist opens us to justice and sharing, with a preferential concern for those who are burdened by poverty or marginalization.”

—Pope Leo XIV via X @pontifex



**Timmco**  
INSURANCE

Brian Timm  
Susan Ames | Derek Ames

1615 NE Broadway | 503-288-8818  
www.timmco.com

AUTO | HOME | BUSINESS | LIFE


**JOHN M. WYNN**  
ATTORNEY AT LAW  
McGill, Kapranos & Wynn  
Parishioner



Hollywood Professional Center, 3939 NE Hancock St., Ste. 305  
jmwpx@qwestoffice.net • 503-287-7333

---

**JOSÉ MESA AUTO WHOLESALE, LLC**  
"The mobile auto dealer who is always in your neighborhood."  
**YOUR DISCOUNT AUTO RETAILER SINCE 1992!**  
sales@josemesa.com 503-789-0438 www.josemesa.com  
NEW • USED • BUY • SELL • LEASE • TRADE • CONSIGN • BROKER • APPRAISE



**Ashley**  
REALTY WORKS TEAM

PARISHIONERS, NEIGHBORS, EXPERT REALTORS

**Wick & Karoline Ashley**

karoline@ashleyrealtyworks.com  
(503) 819-4851

2045 NE MLK JR BLVD  
Portland, OR, 97212






**MATT MORAN**

Principal Real Estate Broker  
Windermere Realty Trust  
Parent, Parishioner & CC Family  
Matt, Anna, Emma, & Sofie  
503-781-9646  
moran@windermere.com





**The Madeleine Knights of Columbus**

Make a Difference  
in your Parish and Community.  
Become a Knight!

**Call 503-701-5581**

**Affinity HOME CARE**  
at Bethany Village

Providing **Professional, High-Quality,**  
and **Compassionate Home Care**

affinityatbethany.com/madeleine  
**Call (503) 382-8926**





Empowering athletes to fuel their training and elevate performance

**Sarah McCormick, MS, RDN**  
**Sports Dietitian Nutritionist**  
Madeleine Parishioner & Mom

503-270-3310 @teensportnutrition

**Robben & Sons HEATING Inc.**  
Since 1932

**Heating & Cooling Residential & Commercial**

Boilers • Ductless • Electrical  
Gas • Oil • Heat Pumps  
Water Heaters • Generators

**Colin O'Donnell, CCHS '20**  
**503-830-3090**  
colin@robbandsons.com

**ANNE C. STEINER**  
ESTATE PLANNING  
ELDER LAW ATTORNEY

503.946.8361 • 1915 NE Cesar Chavez Blvd.  
PARISHIONER - [anne.c.steiner@gmail.com](mailto:anne.c.steiner@gmail.com)

WILLS - TRUSTS - PROBATE  
GUARDIANSHIP - CONSERVATORSHIP



**Retrouaille**  
A Christian Peer Ministry  
A LIFELINE FOR HURTING MARRIAGES

Is your marriage tearing you and your family apart?

Weekends held 3 times per year in Oregon  
[www.helpourmarriage.com](http://www.helpourmarriage.com)  
**503-704-7382**

Donated by Kevin & Carol McMenamin

**Alec Bromka**  
**(w)here** Real Estate

503-505-3550  
Parent & Parishioner




**WILLAMETTE FINANCIAL ADVISORS, LLC**  
PERSONALIZED ADVICE FROM TRUSTED ADVISORS

**James M Jones**  
Financial Advisor, CFP®  
Parishioner  
Direct 503.284.9200  
Office 503.7470306  
jjmj@wfinadv.com




**DDI benefits**

**MEDICARE QUESTIONS? WE CAN HELP!**

Medicare can be complicated, but we can provide free unbiased information and help navigate the process to find just the right solution for you.

**Emmett Dooney, '11**  
Licensed Medicare Agent  
**503.206.4080**  
[medicare@ddibenefits.com](mailto:medicare@ddibenefits.com)



**ADVERTISE YOUR BUSINESS HERE!**

Contact Rich Hammons  
[bulletin@themadeleine.edu](mailto:bulletin@themadeleine.edu)

**JOHN W. LOBO PAINTING**  
Custom Interior & Exterior  
Creative Finishes  
503-969-3337 CCB#89027  
Licensed Bonded Insured



**Sweetly Aimee, LLC**  
Custom Wedding and All-Occasion Cakes and Desserts

Aimee Holzschuh  
Parishioner & Parent  
503.998.7368  
[www.SweetlyAimee.com](http://www.SweetlyAimee.com)



Whole house remodels

- Kitchens • Bathrooms
- Basements • Additions

In-house architecture & design

Nathalie Roloff, Parishioner

**T.C. O'LEARY'S**  
a little irish PUB

2926 NE Alberta Street  
A little taste of Ireland!  
[www.tcolearys.com](http://www.tcolearys.com)



Parishioners Tom, Siobhan & Aine O'Leary

**ADVERTISE YOUR BUSINESS HERE!**

Contact Rich Hammons  
[bulletin@themadeleine.edu](mailto:bulletin@themadeleine.edu)

**Maria Fitzgerald**  
REAL ESTATE BROKER  
WINDERMERE REALTY TRUST  
503-680-9737  
Madeleine Mom & Parishioner




finding the home that fitz you...



**SOCIETY OF ST. VINCENT DE PAUL**  
**ST. VINCENT DE PAUL**  
- THRIFT STORE -  
OPEN DAILY

Open Daily 10 am-7 pm  
17108 SE Powell Blvd., Portland  
[www.svdppdx.org/store-details](http://www.svdppdx.org/store-details)

Discount and free vouchers available,  
contact Lisa Hawkins 503.309.7968

503.245.0685  
[roloffconstruction.com](http://roloffconstruction.com)  
4300 NE Fremont #130

CCB #140721  
WA#ROLOFC1873KU



**ROLOFF CONSTRUCTION**