

Archbishop's Catholic Appeal 2026

Being nurtured and cared for is a wonderful feeling. As children, our parents and grandparents provide the love and safety of a warm family life. When we go to school, our teachers join them in encouraging our curiosity. And at all stages of life, we find support in our friendships. Jesus, the Good Shepherd, is the ultimate caretaker. His love for us is personal, even protective. Just as a dutiful shepherd knows every sheep in his flock, Jesus knows each of us and he calls us by name.



In him, we are safe. In him, we find rest. And in him we "have life and have it more abundantly."

As a Church, we are invited to reflect that same shepherding love in the world—to be the voice that calls others to hope, healing, and faith. In that spirit, please consider supporting this year's Archbishop's Catholic Appeal. Your gift helps extend Christ's care to many in need. Please prayerfully consider making your gift today at Appeal.ArchdPDX.org.

Celebrate Mothers on Mothers Day

Upload mother & child photos to www.themadeleine.edu/mothers

Mother's Day weekend May 9–10, we will show a slideshow of mothers and children sent in from The Madeleine Community. The photos will show both in the church at all Masses and on our livestream.



Submissions can be either a photo of mother and child (children), or a photo of mothers and their mothers. Please send us just one photo of a mother/child combo per family grouping, as we want to have

time to show all our photos.

Send photos by May 5

Upload your photos to our website at www.themadeleine.edu/mothers

We are starting over—all new photos!

This year, again, we're making a fresh start, a blank canvas. So even if you've sent us a photo before, please send a new one .

FANTASTIC FISH, MUSIC, GAMES

MAY 8 • PARISH HALL

 Details Page 5

E-WASTE RECYCLING EVENT

This Weekend

 Details Page 5

Fourth Sunday of Easter

IN TODAY'S READINGS, WE HEAR of the many ways Jesus reaches out to us and saves us, tending to us as a shepherd. He is, indeed, as Peter says, the shepherd and guardian of [our] souls. If we pray and listen attentively for his voice in our heart, we will hear the call of the Good Shepherd, who is our strength and our salvation.

Pray For Our Faithful Departed

- ▶ John Seeronen
- ▶ Steve Nava
- ▶ Ron Verhaalen
- ▶ Glynn Roberson

Prayer Requests

For those who are ill or in need of our prayers

- ▶ Carol McMenamin
- ▶ Ruthie Wieber
- ▶ Karen Hudson
- ▶ Julie Masson
- ▶ Bill Stevenson
- ▶ Kevin McMenamin
- ▶ Chris Mealy
- ▶ David Hendrickson
- ▶ Griff Marshall
- ▶ Kait Skyler
- ▶ Trish Grantham
- ▶ Kitt & Corinne Jordan
- ▶ Ann Czuba
- ▶ Jean Mitchell
- ▶ Charli Phipps

Mass Intentions

- 04/25, Sat Sylvia Howes
- 04/26, Sun 8:00 am John Nguyen †
- 10:00 am Madeleine Community
- 04/28, Tues Anna Nguyen †
- 04/29, Weds No Mass Today
- 04/30, Thurs No Mass Today
- 05/01, Fri No Mass Today
- 05/02, Sat Paco Maribona †
- 05/03, Sun 8:00 am Madeleine Community
- 10:00 am Max Schneider †

Inside This Week's Bulletin:

- ▶ **Knights of Columbus Spring Blood Drive**—The Red Cross needs our help to help save lives. Details Page 3.
- ▶ **Liturgical Minister Signups**—As always we invite you to become a Liturgical Minister, to help with various aspects of our weekend liturgies. Find out more on Page 2.

Coffee & Donuts after

Sunday Masses in the

Fireside Room. Hosted by

Knights of Columbus.

Calendar This Week

26 April • Sunday

- ▶ Archbishop's Catholic Appeal
- ▶ Coffee and Donuts –Hosted by Knights of Columbus
- 8 am: Mass—Church
- 9 am: E-Waste Event—Parish Hall Driveway
- 9:15 am: First Communion Class—Library
- 10 am: Mass—Church
- 4 pm: Three's Company - Concert—Old Madeleine Church

27 April • Monday

- 6:30 pm: FA Meeting—Fireside Rm

28 April • Tuesday

- 8:30 am: Mass—Church
- 9 am: Adoration—Church

29 April • Wednesday

- ▶ No Mass today (Fr B. is away)
- 7 pm: Madeleine Choir Rehearsal—Church

30 April • Thursday

- ▶ No Mass today (Fr B. is away)

1 May • Friday

- ▶ No Mass today (Fr B. is away)
- 7:30 pm: The Sound of Silence - Bravo! rehearsal—Old Church

2 May • Saturday

- 2 pm: Margaret Bichteler studio violin recital—Old Madeleine Church
- 4 pm: Confession—Church
- 5 pm: Mass—Church

3 May • Sunday

- 8 am: Mass—Church
- 10 am: First Communion Mass—Church
- 11 am: First Communion Reception—Fireside Rm
- 3 pm: The Sound of Silence - Bravo! —Old Madeleine Church

Mass Update Next Week

Fr. Bonaventure is helping chaperone the Eighth Grade on their trip to Washington, DC...
So no Masses April 29—May 1

Upcoming Events

▶ Coffee & Donuts:

- ▶ April 26, May 24—hosted by Knights of Columbus
- ▶ May 31: hosted by St. Vincent de Paul
- ▶ June 7—hosted by the Glavan family

▶ E-Waste Recycling Event: April 26 www.themadeleine.edu/ewaste

▶ Fish Fry: May 8 www.themadeleine.edu/fishfry

▶ Feast of St. Mary Magdalene/Parish Picnic: July 18

▶ Advent Begins: November 29

▶ Madeleine Marketplace: December 11

PARISH LIFE

Sign-up to become a Liturgical Minister – Coming Soon!

Interested in becoming a liturgical minister? Sign-ups will be available the weekend of May 16 and 17 after Mass. Sign-ups for these liturgical ministries will be included: Sacristan, Extraordinary Minister of Holy Communion, Lector, Usher, Music Ministry (including Choir and Cantor), Environment, and A/V. See the Liturgical Ministries Flyer in the Vestibule (near the weekend bulletin) for more information about each ministry. An individual from the Liturgy Committee will contact those who sign-up to get them started.

Knights of Columbus Baby Bottle Drive

The Madeleine Knights of Columbus will be distributing “baby bottles” after all of the Masses for the next few weekends. Please fill them up with any spare change that you can donate and return them back to the Knights.

The donations go to the Mother and Child Foundation that supports women and children in need of assistance. Your generous gifts are appreciated!



Infant Baptisms and OCIC

Parents seeking baptism for their infant or young child should submit our registration form and sign up for one of our upcoming classes. Registration forms and instructions are available at www.themadeleine.edu/sacraments. Children older than 7 years and beyond 2nd grade must go through OCIA for children (OCIC). Through April, please reach out to Kristen Kill at kristenkill@gmail.com to sign up for classes and learn more.

Madeleine Book Club!

Do you love to read? Would you enjoy opportunities to meet with other parishioners and friends to share in genial discussion/debate over the contents of some very excellent books? If so, you are most cordially invited to join our group. For further information or to be added to our email list, please contact our MBC ministry coordinator: Gretchen Stevenson, gypsyfrau47@yahoo.com or 503-312-6834



Today, we celebrate “Good Shepherd Sunday” where we reflect on Jesus’ care and love of us and hear his words. “I came so that they may have life and have it more abundantly.” By your gift to the Society of St. Vincent de Paul you will reveal the love of the “Good Shepherd” to your suffering brothers and sisters..

—Lisa Hawkins, (503) 309-7968 • **Emergency Services Client phone: (503) 235-8431**



Knight of the Month and his family—Dick Barsotti

- ▶ Years of Knighthood: Entire adult life. Active again in 2025
- ▶ Occupation: Retired pediatrician.
- ▶ Wife: Debbie who had worked at Central Catholic but major work was grandmother and mother. Died 2023
- ▶ Four children: Benjamin (Pediatrician), Sadie (Kindergarten teacher), Peter (Athletic Director North Eugene High School), and Beth (ministry)
- ▶ 10 grandchildren from 19 y/o to 3 months and many more who call me Grandpa.



Wear a Nametag to Mass

During this year's Easter Season we'd like to make an effort to get to know each other a little better so, let's wear a nametag to Mass!

We all know each other's faces...but not so much the names. To limit waste, if you have a nametag at home from any other use... please bring it to wear. Don't have a nametag at home? We'll have blanks in the back of the church for you to make one.

WorldWide Marriage Encounter

“Were not our hearts burning within us while he spoke to us on the way and opened the Scriptures to us?” Let your hearts burn for Jesus and your spouse. Learn how on the upcoming Worldwide Marriage Encounter Experience on May 1 - 3, 2026, in Beaverton, Oregon. To apply for your WWME Experience or search other dates go to rediscoverthespark.org. For information: 503-704-0836 or reservations@rediscoverthespark.org

Knights of Columbus Spring Blood Drive

May 9 • 9 am–2 pm • Parish Hall • Sign Up Now

Registration for the next Knights of Columbus Red Cross blood drive is now open! The blood drive will be on Saturday May 9th in the Fireside room. To register please use the QR code here or the ones on the poster in the church vestibule. There will also be some cards with the QR code on it in the church



vestibule that you can take home or give to friends who may wish to donate. As always, we look forward to seeing you and hope that together we can help save many lives

So, please scan the QR code above, or click to www.tinyurl.com/koc-bd2026 and make your appointment today!

Assisted listening Devices Available

Available on the north wall of the church

As lovely and soaring as our beloved church is, sometimes its lively acoustics can make hearing all of Mass a challenge...especially some of our presiders who are easier to hear than others. But we have a solution!

On the north wall of the church, we have assisted listening devices for your use during Mass. They're very easy to use and can vastly improve the experience at Mass for those with hearing challenges. Just take a device, plug in a headphone, and adjust the volume to your comfort. We just ask you to sign the check-out list and return them at the end of Mass.

Questions? Ask any Minister of Hospitality.



Advertise in the Parish Bulletin

It's one of the best kept secrets and biggest bargains in the area...Madeleine Parish Bulletin Advertising. The back page of your weekly bulletin is a great place to get the word out to our parish community of your goods or services. With the turnover of the new year, we have a few spaces available.

► **Affordable**—Starting at just \$220 per full year (January 1 through December 31). Of course, we'll prorate for anyone joining mid-year.

► **Versatile**—Many sizes available...based on our "single" size module, you can stack it two or three high, stretch it two or three wide...or more if space allows...whatever size you need to get your brand's message across to our readers.

► **Relatable**—Members of The Madeleine community tend to be very loyal to their fellow parishioners. By advertising in the bulletin, you're demonstrating that you're an integral part of this parish community.

► **Good Company**—On the back of our bulletin are some of the stalwart companies in our parish and community. Several familiar names have been with us for decades...isn't it time you joined them?

Contact Rich Hammons, Director of Communications, at bulletin@themadeleine.edu

Single: 1 7/8" x 1 1/8"
May–Dec: \$146
Full Year: \$220

Double Stretch: 1 7/8" x 1 3/4"
May–December: \$250 • Full Year: \$375

Double Tall:
1 7/8" x 1 3/4"
May–Dec: \$250
Full Year: \$375

Weekly Mass Times

Regular Mass Times:

Tuesday, Wednesday, Friday 8:30 am
 Thursday School not in session: 8:30 am
 School Thursdays: 2:00 pm
 Saturday Vigil 5:00 pm
 Sunday 8:00 am, 10:00 am

Penance Saturday, 4:00–4:40 pm
Adoration Tuesdays, 9:00 am–2:00 pm

Parish Office

Hours Tuesday–Friday, 9:00 am–3:00 pm
Phone 503-281-5777
School Office 503-288-9197

Parish Staff

- Rev. Bonaventure Rummell**—Administrator
fatherbonaventure@themadeleine.edu, ext. 111
- Rev. Nazario Atukunda**—In Residence
- Deacon Mike O'Mahoney**—Permanent Deacon
deaconmike@themadeleine.edu
- Jenn Langhus**—Interim School Principal
janghus@themadeleine.edu . . . 503-288-9197
- My Schoning**—Business Manager
mhoang@themadeleine.edu ext. 114
- Linda Scheurman**—Bookkeeper
lscheurman@themadeleine.edu ext. 119
- Maria Manzo**—Director of Music
mmanzo@themadeleine.edu ext. 113
- Lauren Craig**—Faith Formation/Sacramental Prep
lcraig@themadeleine.edu ext. 116
- Minh-Ha Nguyen**—Parish Admin Assistant
mhnguyen@themadeleine.edu ext. 112
- Julie Kupers**—Special Events
jkupers@themadeleine.edu . . . 720-936-5635
- Dcn. Mike O'Mahoney**—Facilities Supervisor
deaconmike@themadeleine.edu
- Rich Hammons**—Director of Communications
rhammons@themadeleine.edu ext. 129

Sacraments

- Infant Baptism** . . .Kristen Kill (filling in until end of April): kristenkill@gmail.com
- First Reconciliation, First Eucharist**—
 Rose Horton . . . sac-prep@themadeleine.edu
- OCIA** (formerly RCIA)— Donna Mason (filling in until end of April) ocia@themadeleine.edu
- Marriages** Fr. Bonaventure, ext 111
- Anointing** (Emergency) 971-301-4421
- Funerals**—
 Therese Fenzl tfenzl@themadeleine.edu

Councils & Contacts

- Pastoral Council**—Dan O'Brien
pastoral-council@themadeleine.edu
- Finance/Admin**—John Garrow . . .503-803-5693
- Buildings & Grounds**—Erin Couch, 503-281-9575
- School Advisory**—Emily Fellman, 503-752-4143
- Facility Requests**—themadeleine.edu/facilities
- Maintenance Requests**—My Schoning
mhoang@themadeleine.edu ext. 114
- Knights of Columbus**—
 Dan O'Donnell. 503-440-9415
- Ministry Schedule**
www.themadeleine.edu/minister-schedule
- Bulletin submissions due 5:00 pm Tuesday**
 Email to bulletin@themadeleine.edu

PARISH LIFE

Care for our Common Home *Laudato Si'*

Next Laudato Si Circle Gathering is May 3

In the "First International Conference on the Just Transition Away from Fossil Fuels" 85 countries will gather in Colombia on 28-29 April for a conference to begin a global transition away from oil, gas and coal. fossilfuel treaty.org

Please consider joining one or more of our monthly Laudato Si Gatherings by Zoom for prayer, fellowship, to share good news and practical action plans.

We plan to meet this year after Sunday 10am Mass at 11:45 pacific on: 5/3, 5/24, 6/28, 7/26, 8/30, 9/27, 10/25, 11/29.

For Zoom links, questions, comments or info contact Bill Hunter, wiliamjhunterjr@gmail.com or text to (502) 419-5705

☺ No one is excluded from God's love!

With our unique pasts, mistakes, and sufferings, each one of us remains precious in the Lord's eyes. Jesus revealed this to us in His every encounter, gesture, and word. He loved us to the very end, showing us that he believed in the power of love to change even the hardest of hearts. ☺

—Pope Leo XIV via X @pontifex

The Madeleine School—114 years of academic excellence built on a foundation of faith



ENROLLING FOR FALL 2026

Openings in Pre-K and Grades 1 & 2

The Madeleine School combines academics, faith formation and service in a vibrant, inclusive community where all are welcome, working together to develop the unique gifts of each child.

Madeleine families embrace our Catholic mission, values and philosophy, regardless of their faith tradition. Madeleine School graduates are prepared for their high school of choice, placing many directly into advanced and honors courses, and with experience in community service.

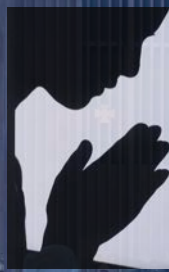
- ▶ Science, Art, Music, Physical Education specialists with grade-appropriate instruction and activities.
- ▶ Full-day Pre-K and Kindergarten.
- ▶ Classroom assistants in Pre-K through Third Grade.
- ▶ Need-based financial aid available.
- ▶ On-site Learning Support Team to support diverse learners with individualized and small-group instruction.
- ▶ On-site counselor supports the social, emotional and academic needs of all students.

SCHEDULE A TOUR TO FIND OUT MORE! CALL 503-288-9197

www.themadeleine.school

Seven Sisters Apostolate presents...

2026 Ladies Retreat on Prayer (Intercessory Prayer)



Our Lady of
Perpetual
Help

Saturday, June 13th, 2026
7:30 - 1:15
1025 N 19th Street, Cottage Grove OR
For questions contact Jennifer at:
SevenSistersPortland@gmail.com

Register here: <https://form.jotform.com/260295587315060>

Cost: \$50.00, (Includes brunch and snacks)

Registration Deadline: June 1st, 2026

Please join us for a faith filled retreat where we discuss how to effectively pray for someone else.

Speakers: Fr. John Boyle & Janice Romano

hey, let's be friends!
**catholic artist
coffee shop hang**

find us
@studiosapientiapdx
on insta and

3rd Saturday, 10:30am
@Crema on SE 28th and Ankeny

all artists, all disciplines

The Madeleine Care for Creation ANNUAL E-WASTE RECYCLING EVENT

Sunday, April 26 • 9:00 am–1:00 pm

The Madeleine Care for Creation Committee is pleased to announce our annual Earth Day E-Waste Recycling Event. The event is provided at no charge, but donations accepted to help cover costs.

Green Century Recycling will be on hand to accept the following

- ▶ Computers
- ▶ Laptops
- ▶ TV & Monitors (all types)
- ▶ Hard drives (Secure Data Destruction Provided)
- ▶ Misc. Computer Components (floppy drives, Printed Circuit Boards (PCB), etc.)
- ▶ Cords/Wires/Chargers/Power strips
- ▶ Servers/Switches
- ▶ Routers/Hubs/Modems
- ▶ Networking Devices
- ▶ Communications Equipment
- ▶ POS (Point of Sale equip)
- ▶ Printers/Scanners
- ▶ Fax/Copiers
- ▶ Keyboards/Mice
- ▶ Misc. Office Machines
- ▶ Misc. Electronics
- ▶ VCRs, DVD Players
- ▶ Cable & Satellite Equipment
- ▶ Testing Equipment
- ▶ Stereo/Audio Components
- ▶ Cell Phones (with or without batteries)
- ▶ PDAs, Handheld Games
- ▶ Cameras
- ▶ Telephones
- ▶ Gaming Consoles/Systems
- ▶ UPS (uninterruptible power supply) and other Lead Acid Batteries
- ▶ Small/Large Appliances (which include, microwaves, toasters, blenders, etc.)
- ▶ Electric Power Tools
- ▶ Laptop Batteries, Cell Phone Batteries, Li-on batteries
- ▶ Ferrous & Non-Ferrous Metals
- ▶ Air Conditioners

GREEN CENTURY RECYCLING
PULL THE PLUG ON ELECTRONIC WASTE.



USED SOCKS for recycling
Clean, used socks only; pairs and singles are accepted. These will be recycled, so no new socks. No stockings, tights, or pantyhose

We will collect used athletic shoes to be reused or recycled.
(Please—pairs only; no dress or casual shoes,)



The following items will NOT be accepted during this event.



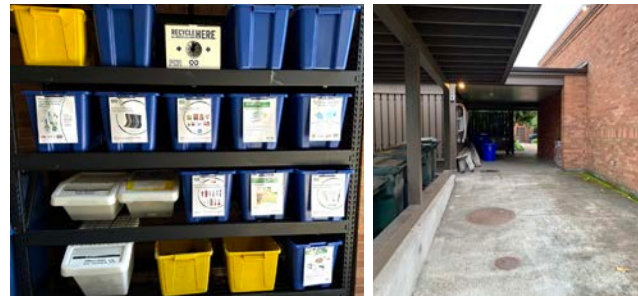
- ▶ **NO!** Styrofoam
- ▶ **NO!** Plastics/Packaging
- ▶ **NO!** Fluorescent Tubes and lamps (All types)
- ▶ **NO!** Ni-CD & Ni-MH batteries
- ▶ **NO!** Household size batteries (AA, AAA, C, D, 9V, etc.)
- ▶ **NO!** Ink/Toner Cartridges
- ▶ **NO!** Media (CD, DVD, floppy, VHS, Cassette, tapes)
- ▶ **NO!** PCB Ballasts
- ▶ **NO!** Wood
- ▶ **NO!** Refrigerators, Freezers, most water coolers, some dehumidifiers
- ▶ **NO!** Capacitors
- ▶ **NO!** Fire Extinguishers
- ▶ **NO!** Mercury Containing Devices (Thermostats, Ionization Smoke Detectors)

RECYCLING PROGRAMS AT THE MADELEINE

Marked collection bins in the breezeway facing 23rd Ave.

The Madeleine's Laudato Si' Circle and Care for Creation Ministry have joined with U. S. based recycler, Terracycle, to offer our parish, school, and community opportunities to responsibly recycle specific items (primarily plastics) not generally handled at curbside. Terracycle has added more manufacturers to its program, and in turn, we have expanded our recycling offerings. Here is a current listing of what we are collecting. Please keep this in mind:

- ▶ Do not include garbage or items not specifically mentioned in the descriptions.
- ▶ Empty containers of contents. No need to wash first; ensure packaging is dry.



KROGER FLEXIBLE PLASTICS

All Kroger brand flexible plastic packaging can now be accepted. Includes Private Selection and Simple Truth brands as well.



DRINK POUCHES, ALL BRANDS

All drink pouches are accepted! Please remove as much of the remaining product as possible.



FABRIC CARE PRODUCTS & PACKAGING

From Tide, Gain, Downy, NBD and Dreft, including plastic components (dispensing cup, bag, nozzle, nozzle clip), and plastic packaging wrap, flexible plastic bags, rigid plastic tubs and lids, and Tide To Go pen.



GILLETTE® AND VENUS RAZORS AND RAZOR BLADES

All brands of blades and razors (systems and disposable units, and replaceable-blade cartridge units), rigid plastic packaging, and flexible plastic bag packaging.



ORAL CARE PRODUCTS

All brands of used or empty oral care products, including toothpaste tubes, tooth brushes, and dental floss containers.



USED ATHLETIC SHOES (PAIRS ONLY)

We are pleased to offer for recycling or reuse any athletic shoes you no longer need. It's very important that only athletic shoes are provided, and only in pairs—we cannot accept any non-athletic footwear of any kind, including but not limited to dress shoes, heels, sandals, wedges, water socks, rain boots, crocs, or other non-athletic styles.

AIR CARE PRODUCTS AND PACKAGING AND MR. CLEAN DEEP CLEANING MIST

All brands of air and home cartridges, air and home care plugs, air and home care trigger heads, and air and home care plastic and film packaging. No aerosol containers. Remove remaining product.



SWIFFER REFILLS

Swiffer only brands of Sweeper™ Dry, Wet, and XL Refills, WetJet Refills™, and Duster™ Refills.



gotsneakers?
A Sneaker Recycling Organization



Details on all programs at www.themadeleine.edu/terracycle



FANTASTIC FISH, FAMILY FUN

- Beer battered fresh fish by TC O'Leary's
- Fish & chips, slaw, lemonade & brownies (pizza for kiddos, too)
- Local Beer & NW Wines available for purchase
- Bingo—1 Bingo card included with ticket purchase
- Kids movie in the Fireside Room

TICKETS: WWW.THEMADELEINE.EDU/FISHFRY

KIDS 5 & UNDER EAT FREE

ADULT ➤ \$19

CHILD ➤ \$12^(10 & under)



WE NEED VOLUNTEERS • SIGN UP AT THE WEBSITE





Timmco
INSURANCE

Brian Timm
Susan Ames | Derek Ames

1615 NE Broadway | 503-288-8818
www.timmco.com


AUTO | HOME | BUSINESS | LIFE

JOHN M. WYNN
ATTORNEY AT LAW
McGill, Kapranos & Wynn
Parishioner



Hollywood Professional Center, 3939 NE Hancock St., Ste. 305
jmwpx@qwestoffice.net • 503-287-7333

JOSÉ MESA AUTO WHOLESALE, LLC
"The mobile auto dealer who is always in your neighborhood."
YOUR DISCOUNT AUTO RETAILER SINCE 1992!
sales@josemesa.com 503-789-0438 www.josemesa.com
NEW • USED • BUY • SELL • LEASE • TRADE • CONSIGN • BROKER • APPRAISE



Ashley
REALTY WORKS TEAM

PARISHIONERS, NEIGHBORS, EXPERT REALTORS

Wick & Karoline Ashley

karoline@ashleyrealtyworks.com
(503) 819-4851

2045 NE MLK JR BLVD
Portland, OR, 97212






Robben & Sons
HEATING Inc.
Since 1932

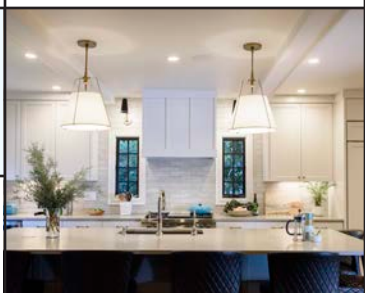
Heating & Cooling
Residential & Commercial
Boilers • Ductless • Electrical
Gas • Oil • Heat Pumps
Water Heaters • Generators

Colin O'Donnell, CCHS '20
503-830-3090
colin@robbandsons.com



WILLAMETTE
FINANCIAL ADVISORS, LLC
PERSONALIZED ADVICE FROM TRUSTED ADVISORS

James M Jones
Financial Advisor, CFP®
Parishioner
Direct 503.284.9200
Office 503.7470306
jimj@wfinadv.com

Whole house remodels
• Kitchens • Bathrooms
• Basements • Additions
In-house architecture & design

Nathalie Roloff, Parishioner

503.245.0685
rolloffconstruction.com
4300 NE Fremont #130

CCB #140721
WA#ROLOFC1873KU



ROLOFF
CONSTRUCTION



MATT MORAN
Principal Real Estate Broker
Windermere Realty Trust
Parent, Parishioner & CC Family
Matt, Anna, Emma, & Sofie
503-781-9646
moran@windermere.com





The Madeleine Knights of Columbus

Make a Difference
in your Parish and Community.
Become a Knight!

Call 503-701-5581



Providing **Professional, High-Quality,**
and **Compassionate Home Care**

affinityatbethany.com/madeleine
Call (503) 382-8926





Empowering athletes to fuel their training and elevate performance

Sarah McCormick, MS, RDN
Sports Dietitian Nutritionist
Madeleine Parishioner & Mom

503-270-3310 @teensportnutrition

ANNE C. STEINER
ESTATE PLANNING
ELDER LAW ATTORNEY

503.946.8361 • 1915 NE Cesar Chavez Blvd.
PARISHIONER - anne.c.steiner@gmail.com

WILLS - TRUSTS - PROBATE
GUARDIANSHIP - CONSERVATORSHIP



Retrouaille
A Christian Peer Ministry
A LIFELINE FOR
HURTING MARRIAGES

Is your marriage tearing you and your family apart?

Weekends held 3 times per year in Oregon
www.helpourmarriage.com
503-704-7382

Donated by Kevin & Carol McMenamin

Alec Bromka
(w)here
Real Estate

503-505-3550
Parent & Parishioner



DDI benefits

MEDICARE QUESTIONS? WE CAN HELP!

Medicare can be complicated, but we can provide free unbiased information and help navigate the process to find just the right solution for you.

Emmett Dooney, '11
Licensed Medicare Agent
503.206.4080
medicare@ddibenefits.com



ADVERTISE YOUR BUSINESS HERE!

Contact Rich Hammons
bulletin@themadeleine.edu

JOHN W. LOBO PAINTING
Custom Interior & Exterior
Creative Finishes
503-969-3337 CCB#89027
Licensed Bonded Insured



Sweetly Aimee, LLC
Custom Wedding and All-Occasion Cakes and Desserts

Aimee Holzschuh
Parishioner & Parent
503.998.7368
www.SweetlyAimee.com

T.C. O'LEARY'S
a little irish
PUB

2926 NE Alberta Street
A little taste of Ireland!
www.tcolearys.com



Parishioners Tom, Siobhan & Aine O'Leary

ADVERTISE YOUR BUSINESS HERE!

Contact Rich Hammons
bulletin@themadeleine.edu

Maria Fitzgerald
REAL ESTATE BROKER
WINDERMERE REALTY TRUST
503-680-9737
Madeleine Mom & Parishioner




finding the home that fitz you...



Open Daily 10 am-7 pm
17108 SE Powell Blvd., Portland
www.svdppdx.org/store-details

Discount and free vouchers available,
contact Lisa Hawkins 503.309.7968