

## CELTIC VESPERS

Join The Madeleine Choir  
for music, prayer & fellowship  
on St. Patrick's Day

Tuesday, March 17; 6:00PM  
OLD MADELEINE CHURCH

Please bring a dish to share



## Fourth Sunday of Lent

THE LENGTHY EXCHANGE in today's Gospel between the formerly blind man and the Pharisees serves as a reminder that we are all born blind and are given our sight at baptism, when we are first able to see through the eyes of faith. As our Lenten journey continues, let us pray that God will continue to open our eyes to his truth.

### Pray For Our Faithful Departed

- ▶ Steve Nava
- ▶ Ron Verhaalen
- ▶ Glynn Roberson

### Prayer Requests

For those who are ill or in need of our prayers

- ▶ Donna Wujek
- ▶ Karen Hudson
- ▶ Norris Hibbler
- ▶ Julie Masson
- ▶ Bill Stevenson
- ▶ Kevin McMenamin
- ▶ Chris Mealy
- ▶ David Hendrickson
- ▶ Griff Marshall
- ▶ Mark Uhrich
- ▶ Kait Skyler
- ▶ Trish Grantham
- ▶ Kitt & Corinne Jordan
- ▶ Ann Czuba
- ▶ Jean Mitchell
- ▶ Charli Phipps

### Mass Intentions

- 03/14, Sat . . . . . The Madeleine Community
- 03/15, Sun 8:00 am . . . . . Peter Nguyen †
- 10:00 am . . . . . Special Intention  
by Rich Hammons
- 03/17, Tues . . . . . Naomi Meyer †
- 03/18, Weds . . . . . Jill Beckmeyer †
- 03/19, Thurs . . . . . James Smirl †
- 03/20, Fri . . . . . Bob O'Sullivan †
- 03/21, Sat . . . . . Alan Morrill †
- 03/22, Sun 8:00 am . . . Madeleine Community
- 10:00 am . . . . . Msgr. Tim Murphy

**Coffee & Donuts hosted by  
Madeleine Parents Association  
after Sunday Masses. Parish Hall**




## St Patrick's Parade

Sunday, March 15 • 1:30 pm sharp

Don your best Sunday green and join in the fun of the 37th Annual Portland St. Patrick's Day Parade! The parade is Sunday, March 15, at Beverly Cleary School/Fernwood Campus starting at 1:30 pm sharp. This neighborhood and family event celebrates St. Paddy's Day and the arrival of Spring. Steve O'Slavik guarantees sunshine, blue skies and a rainbow as revelers promenade down Hancock and Tillamook. "It'll be grand entirely!" quips O'Slavik.

## Calendar This Week

### 15 March • Sunday

- ▶ Coffee & Donuts, Hosted by MPA—Fireside Rm
- 8 am: Mass—Church
- 9:15 am: First Communion Class—Library
- 10:00 am: Mass—Church  **ALSO LIVESTREAMS**
- 11:15 am: Confirmation Class—Old Church
- 3 pm: Bravo! Sacred Concert—Old Church

### 16 March • Monday

- 1 pm: Church Cleaning Ministry—Church
- 6:30 pm: FA Meeting—Fireside Rm

### 17 March • Tuesday

- 8:30 am: Mass—Church
- 9 am: Adoration—Church
- 6 pm: Celtic Vespers

### 18 March • Wednesday

- 8:30 am: Mass—Church
- 7 pm: Madeleine Choir Rehearsal—Church

### 19 March • Thursday

- 8:30 am: Mass—Church
- 6:30 pm: SAC—Library

### 20 March • Friday

- 8:30 am: Mass—Church
- 3:30 pm: Stations of the Cross, Soup & Sharing—Church, Fireside Rm

### 21 March • Saturday

- 4 pm: Confession—Church
- 5 pm: Mass—Church

### 22 March • Sunday

- ▶ Coffee & Donuts, Hosted by Knights of Columbus—Fireside Rm
- 8 am: Mass—Church
- 10 am: Mass—Church

## Upcoming Events

### ▶ Coffee & Donuts:

- ▶ March 15, April 12—hosted by Madeleine Parents Association
- ▶ March 22, April 26, May 24—hosted by Knights of Columbus)

### ▶ Celtic Vespers: March 17

### ▶ Paschal Triduum 2026: April 2-4

### ▶ Easter 2026: April 5

### ▶ E-Waste Recycling Event: April 26

### ▶ Feast of St. Mary Magdalene/Parish Picnic: July 18

### ▶ Madeleine Marketplace: December 11

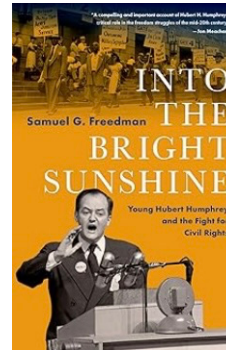
## PARISH LIFE

### New No-Handle Collection Baskets?

Maybe. At some of our weekend Masses during the next several weeks our Ministers of Hospitality (Ushers) are trying out new methods for taking the Collection. This includes experimenting with no-handle collection baskets. Why? We are looking for ways to make it easier for everyone, our Ushers and those in the assembly, to participate in the Offertory. Whether we have two Ushers or four Ushers and whether the pews are full or not, how can we care for everyone? I encourage you to support this effort as we experiment with a different way of returning to God a portion of the gifts which He has first given us.

### Madeleine Book Club!

Do you love to read? Would you enjoy opportunities to meet with other parishioners and friends to share in genial discussion/debate over the contents of some very excellent books? If so, you are most cordially invited to join our group. Our March book selection is *Into The Bright Sunshine* by Samuel Freedman. For further information or to be added to our email list, please contact our MBC ministry coordinator: Gretchen Stevenson, [gypsyfrau47@yahoo.com](mailto:gypsyfrau47@yahoo.com) or 503-312-6834.



### Infant Baptisms and OCIC

Parents seeking baptism for their infant or young child should submit our registration form and sign up for one of our upcoming classes. Registration forms and instructions are available at [www.themadeleine.edu/sacraments](http://www.themadeleine.edu/sacraments). Children older than 7 years and beyond 2nd grade must go through OCIA for children (OCIC). Through April, please reach out to Kristen Kill at [kristenkill@gmail.com](mailto:kristenkill@gmail.com) to sign up for classes and learn more.

### Women's Coffee Time

Usually the second Monday of each month, the Madeleine Women's Coffee Group's March meeting will be canceled due to the Parish Mission occurring at the same time. Our next meeting will be on April 13.



### Knight of the Month and his family—Michael Kissinger

- ▶ Years of Knighthood: 1
- ▶ Occupation: Musician ([www.michaelkissingermusic.com](http://www.michaelkissingermusic.com)). I am Artistic Director for Vancouver Wine & Jazz Festival and Bravo! Concerts Northwest; and West Coast Agent for JWP Music Agency, Sarasota, Florida.
- ▶ Spouse: Maria Manzo-Kissinger, Musician & Director of Music, The Madeleine Church
- ▶ Family: Mother-in-law Sylvia Howes, age 100.
- ▶ Why I became a Knight: I became a Knight to experience and participate in fellowship, prayer, and service with Catholic men. I appreciate the quiet 'behind the scenes' works the Knights perform in support of our Parish Priest, Parishioners, and community in service to Christ. Knights raise money to support priest vocations, provide socks and coats to those in need, create hospitality at the Parish, and so much more. Vivat Jesus!



### Church Cleaning Ministry: Mar. 16 1-3 pm, first & third Monday each month

Your help is needed! Two Mondays a month, our Church Cleaning Ministry gathers to give the church...especially the Altar area...a thorough cleaning. **Church cleaning continues every first and third Monday of the month from 1-3 pm.** March 16 and April 6 are the next two dates. No permanent commitment is expected and plenty of cleaning supplies are provided. Please enter at the side door of the church.



**In today's Gospel, as Jesus gives sight to the blind man.** Through grace we are also transformed from not seeing to seeing and then Jesus sends us to help others see and to believe. Your gift to the Society of St. Vincent de Paul brings joy, peace, forgiveness, mercy and kindness to the hurting hearts of the poor.

—Lisa Hawkins, (503) 309-7968 • **Emergency Services Client phone: (503) 235-8431**

# Waiting for the Dawn

Lent, Triduum & Easter at The Madeleine

## Rice Bowls

Benefits Catholic Relief Services

Collect change in your home to fill your rice bowl. Return to church Holy Thursday.

## Stations, Soup & Spirituality

Fridays of Lent † 3:30 pm • Main Church

Begin with Stations of the Cross, then a potluck simple soup supper and reflections on St. Ignatius' 14 Rules for the Discernment of Spirits with Fr. B.

## Faith Sharing with Therese

Via Zoom • Wednesdays, 6:30 pm •

March 18, 25

Therese Fenzl will lead a Zoom Lenten Faith Sharing Group which will meet once a week from 6:30 pm to 7:30 pm. Limited to 11 participants. Email to Therese for details and Zoom link: tfenzl@themadeleine.edu

## Penance During Lent

Saturdays & Wednesdays

▶ At The Madeleine, Saturdays, 3:30-4:30 pm or Wednesday, March 11 at the Parish Mission morning session.

▶ At St. Rose with Fr. B, Wednesdays, 6 pm

## Celtic Vespers

Tues., March 17 † 6:00 pm • Old Church

▶ Join The Madeleine Choir in a beautiful evening of Lenten Vespers—Irish style.

## Passion (Palm) Sunday

Sat., March 28 † 5:00 pm • Sun., March 29

† 8:00 & 10:00 am

Please gather 15 minutes early in the Parish Hall to bless the palms, then process to the church.

## Chrism Mass

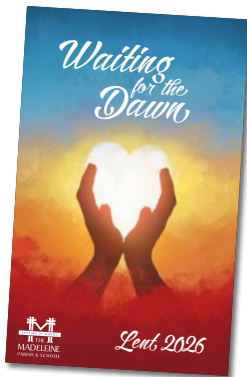
Thursday, March 26 † 5:00 pm • Cathedral

Join Archbishop Sample and his archdiocesan priests as they consecrate the sacred Chrism and bless the other oils.

## Good Friday: 7 Last Words

Friday, April 3 † Noon • Fireside Room

Please join us with parishioner and Lenten book editor Marilyn Robb, who will lead us in a reflection on the Seven Last Words spoken by Jesus during his passion.



Pick up your 2026 Lenten reflection book at Masses, at the Parish Office, or download at [themadeleine.edu/lem](http://themadeleine.edu/lem)

# Soup, Stations, and Spirituality

Fridays this Lent, join us for Stations of the Cross, followed by potluck simple soup suppers and reflections on St. Ignatius' 14 Rules for the Discernment of Spirits with Fr. Bonaventure!



Fridays in Lent at The Madeleine, 3:30pm

## Weekly Mass Times

### Regular Mass Times:

Tuesday, Wednesday, Friday . . . . . 8:30 am  
Thursday . . . . . School not in session: 8:30 am  
School Thursdays: 2:00 pm  
Saturday Vigil . . . . . 5:00 pm  
Sunday . . . . . 8:00 am, 10:00 am

**Penance** . . . . . Saturday, 4:00–4:40 pm  
**Adoration** . . . . . Tuesdays, 9:00 am–2:00 pm

## Parish Office

**Hours** . . . . . Tuesday–Friday, 9:00 am–3:00 pm  
**Phone** . . . . . 503-281-5777  
**School Office** . . . . . 503-288-9197

## Parish Staff

**Rev. Bonaventure Rummell**—Administrator  
fatherbonaventure@themadeleine.edu, ext. 111  
**Rev. Nazario Atukunda**—In Residence  
**Deacon Mike O'Mahoney**—Permanent Deacon  
deaconmike@themadeleine.edu  
**Jenn Langhus**—Interim School Principal  
jlanghus@themadeleine.edu . . . 503-288-9197  
**My Schoning**—Business Manager  
mhoang@themadeleine.edu . . . . . ext. 114  
**Linda Scheurman**—Bookkeeper  
lscheurman@themadeleine.edu . . . . . ext. 119  
**Maria Manzo**—Director of Music  
mmanzo@themadeleine.edu . . . . . ext. 113  
**Lauren Craig**—Faith Formation/Sacramental Prep  
lcraig@themadeleine.edu . . . . . ext. 116  
**Minh-Ha Nguyen**—Parish Admin Assistant  
mhnguyen@themadeleine.edu . . . . . ext. 112  
**Julie Kupers**—Special Events  
jkupers@themadeleine.edu . . . 720-936-5635  
**Dcn. Mike O'Mahoney**—Facilities Supervisor  
deaconmike@themadeleine.edu  
**Rich Hammons**—Director of Communications  
rhammons@themadeleine.edu . . . . . ext. 129

## Sacraments

**Infant Baptism** . . .Kristen Kill (filling in until end of April): kristenkill@gmail.com  
**First Reconciliation, First Eucharist**—  
Rose Horton . . . sac-prep@themadeleine.edu  
**OCIA** (formerly RCIA)— Donna Mason (filling in until end of April) . . . . . ocia@themadeleine.edu  
**Marriages** . . . . . Fr. Bonaventure, ext 111  
**Anointing** (Emergency) . . . . . 971-301-4421  
**Funerals**—  
Therese Fenzl . . . . . tfenzl@themadeleine.edu

## Councils & Contacts

**Pastoral Council**—Dan O'Brien . . 503-206-2843  
pastoral-council@themadeleine.edu  
**Finance/Admin**—John Garrow . . 503-803-5693  
**Buildings & Grounds**—Erin Couch, 503-281-9575  
**School Advisory**—Emily Fellman, 503-752-4143  
**Facility Requests**—themadeleine.edu/facilities  
**Maintenance Requests**—My Schoning  
mhoang@themadeleine.edu . . . . . ext. 114  
**Knights of Columbus**—  
Dan O'Donnell . . . . . 503-440-9415  
**Ministry Schedule**  
www.themadeleine.edu/minister-schedule  
**Bulletin submissions due 5:00 pm Tuesday**  
Email to bulletin@themadeleine.edu

# The Madeleine School—114 years of academic excellence built on a foundation of faith



## ENROLLING FOR FALL 2026

### *Openings in Pre-K and Grades 1 & 2*

The Madeleine School combines academics, faith formation and service in a vibrant, inclusive community where all are welcome, working together to develop the unique gifts of each child.

Madeleine families embrace our Catholic mission, values and philosophy, regardless of their faith tradition. Madeleine School graduates are prepared for their high school of choice, placing many directly into advanced and honors courses, and with experience in community service.

- ▶ Science, Art, Music, Physical Education specialists with grade-appropriate instruction and activities.
- ▶ Full-day Pre-K and Kindergarten.
- ▶ Classroom assistants in Pre-K through Third Grade.
- ▶ Need-based financial aid available.
- ▶ On-site Learning Support Team to support diverse learners with individualized and small-group instruction.
- ▶ On-site counselor supports the social, emotional and academic needs of all students.

**SCHEDULE A TOUR TO FIND OUT MORE! CALL 503-288-9197**

[www.themadeleine.school](http://www.themadeleine.school)

Care for our Common Home  
*Laudato Si'*

**Next Laudato Si Circle Gathering is May 3**

Please consider joining one or more of our monthly Laudato Si Gatherings by Zoom for prayer, fellowship, to share good news and practical action plans.

We plan to meet this year after Sunday 10am Mass at 11:45 pacific on: 5/3, 5/24, 6/28, 7/26, 8/30, 9/27, 10/25, 11/29.

For Zoom links, questions, comments or info contact Bill Hunter, williamjhunterjr@gmail.com or text to (502) 419-5705

**Is global warming real? Can we do anything about it?** From Apostolic Exhortation "Laudato Deum" ("Praise God")

"55. Despite the many negotiations and agreements, global emissions continue to increase. Certainly, it could be said that, without those agreements, they would have increased even more. Still, in other themes related to the environment, when there was a will, very significant results were obtained, as was the case with the protection of the ozone layer. Yet, the necessary transition towards clean energy sources such as wind and solar energy, and the abandonment of fossil fuels, is not progressing at the necessary speed. Consequently, whatever is being done risks being seen only as a ploy to distract attention.

56. We must move beyond the mentality of appearing to be concerned but not having the courage needed to produce substantial changes. We know that at this pace in just a few years we will surpass the maximum recommended limit of 1.5° C and shortly thereafter even reach 3° C, with a high risk of arriving at a critical point. Even if we do not reach this point of no return, it is certain that the consequences would be disastrous and precipitous measures would have to be taken, at enormous cost and with grave and intolerable economic and social effects. Although the measures that we can take now are costly, the cost will be all the more burdensome the longer we wait.."

**TIPS FOR GREEN LIVING**

**Here is an ecological proof:** We know a tree by its fruits. But we must acknowledge the fact that this generation would not be able to tell a pear tree from a cherry tree, peach tree or plum tree, not to mention bushes like the raspberry, blueberry and blackberry.



**Lenten Rice Bowls**

Each Lent, Catholic families across the country unite to put their faith into action through prayer, fasting and almsgiving. Through CRS Rice Bowl, families learn about how our sisters and brothers across the globe overcome hardships like hunger and malnutrition, and how through Lenten alms, we have the power to make the world a better place for all.

Rice Bowls are available in the church. Please be generous during Lent, then return them to the church on Holy Thursday.

**Lenten Fasting & Abstinence—guidelines from the Archdiocese**

Ash Wednesday and Good Friday are obligatory days of fasting and abstinence for Catholics. In addition, Fridays during Lent are obligatory days of abstinence. For members of the Latin Catholic Church, the norms on fasting are obligatory from age 18 until age 59.

When fasting, a person is permitted to eat one full meal, as well as two smaller meals that together are not equal to a full meal. The norms concerning abstinence from meat are binding upon members of the Latin Catholic Church from age 14 onwards. Members of the Eastern Catholic Churches are to observe the particular law of their own sui iuris Church.

If possible, the fast on Good Friday is continued until the Easter Vigil (on Holy Saturday night) as the "paschal fast" to honor the suffering and death of the Lord Jesus and to prepare ourselves to share more fully and to celebrate more readily his Resurrection.



91<sup>st</sup> Annual

*Archbishop's Seminary Tea*

April 22, 2026 | 3-6pm

Portland Golf Club

5900 SW Scholls Ferry Road

Portland, Oregon 97225

Tickets are \$50 each and can be purchased in advance. To purchase tickets or make a donation, please go to

**seminarytea.org**

or

mail a check to Seminary Tea Committee

9239 NW McKenna Drive

Portland, OR 97229



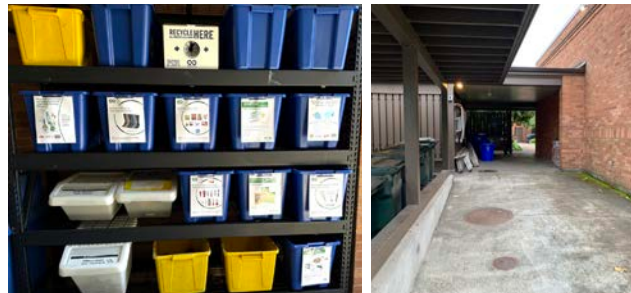
For more information, please email **seminaryteacommittee@gmail.com**

## RECYCLING PROGRAMS AT THE MADELEINE

Marked collection bins in the breezeway facing 23rd Ave.

The Madeleine's Laudato Si' Circle and Care for Creation Ministry have joined with U. S. based recycler, Terracycle, to offer our parish, school, and community opportunities to responsibly recycle specific items (primarily plastics) not generally handled at curbside. Terracycle has added more manufacturers to its program, and in turn, we have expanded our recycling offerings. Here is a current listing of what we are collecting. Please keep this in mind:

- ▶ Do not include garbage or items not specifically mentioned in the descriptions.
- ▶ Empty containers of contents. No need to wash first; ensure packaging is dry.



### KROGER FLEXIBLE PLASTICS

All Kroger brand flexible plastic packaging can now be accepted. Includes Private Selection and Simple Truth brands as well.



### DRINK POUCHES, ALL BRANDS

All drink pouches are accepted! Please remove as much of the remaining product as possible.



### FABRIC CARE PRODUCTS & PACKAGING

From Tide, Gain, Downy, NBD and Dreft, including plastic components (dispensing cup, bag, nozzle, nozzle clip), and plastic packaging wrap, flexible plastic bags, rigid plastic tubs and lids, and Tide To Go pen.



### GILLETTE® AND VENUS RAZORS AND RAZOR BLADES

All brands of blades and razors (systems and disposable units, and replaceable-blade cartridge units), rigid plastic packaging, and flexible plastic bag packaging.



### ORAL CARE PRODUCTS

All brands of used or empty oral care products, including toothpaste tubes, tooth brushes, and dental floss containers.



### USED ATHLETIC SHOES (PAIRS ONLY)

We are pleased to offer for recycling or reuse any athletic shoes you no longer need. It's very important that only athletic shoes are provided, and only in pairs—we cannot accept any non-athletic footwear of any kind, including but not limited to dress shoes, heels, sandals, wedges, water socks, rain boots, crocs, or other non-athletic styles.

### AIR CARE PRODUCTS AND PACKAGING AND MR. CLEAN DEEP CLEANING MIST

All brands of air and home care cartridges, air and home care plugs, air and home care trigger heads, and air and home care plastic and film packaging. No aerosol containers. Remove remaining product.



### SWIFFER REFILLS

Swiffer only brands of Sweeper™ Dry, Wet, and XL Refills, WetJet Refills™, and Duster™ Refills.



**gotsneakers?**  
A Sneaker Recycling Organization



Details on all programs at  
[www.themadeleine.edu/terracycle](http://www.themadeleine.edu/terracycle)

# The Madeleine Care for Creation ANNUAL E-WASTE RECYCLING EVENT

Sunday, April 26 • 9:00 am–1:00 pm

The Madeleine Care for Creation Committee is pleased to announce our annual Earth Day E-Waste Recycling Event. The event is provided at no charge, but donations accepted to help cover costs.

## Green Century Recycling will be on hand to accept the following

- ▶ Computers
- ▶ Laptops
- ▶ TV & Monitors (all types)
- ▶ Hard drives (Secure Data Destruction Provided)
- ▶ Misc. Computer Components (floppy drives, Printed Circuit Boards (PCB), etc.)
- ▶ Cords/Wires/Chargers/Power strips
- ▶ Servers/Switches
- ▶ Routers/Hubs/Modems
- ▶ Networking Devices
- ▶ Communications Equipment
- ▶ POS (Point of Sale equip)
- ▶ Printers/Scanners
- ▶ Fax/Copiers
- ▶ Keyboards/Mice
- ▶ Misc. Office Machines
- ▶ Misc. Electronics
- ▶ VCRs, DVD Players
- ▶ Cable & Satellite Equipment
- ▶ Testing Equipment
- ▶ Stereo/Audio Components
- ▶ Cell Phones (with or without batteries)
- ▶ PDAs, Handheld Games
- ▶ Cameras
- ▶ Telephones
- ▶ Gaming Consoles/Systems
- ▶ UPS (uninterruptible power supply) and other Lead Acid Batteries
- ▶ Small/Large Appliances (which include, microwaves, toasters, blenders, etc.)
- ▶ Electric Power Tools
- ▶ Laptop Batteries, Cell Phone Batteries, Li-on batteries
- ▶ Ferrous & Non-Ferrous Metals
- ▶ Air Conditioners

**GREEN CENTURY RECYCLING**  
PULL THE PLUG ON ELECTRONIC WASTE.



**USED SOCKS for recycling**  
Clean, used socks only; pairs and singles are accepted. These will be recycled, so no new socks. No stockings, tights, or pantyhose

**We will collect worn-out athletic shoes to be ground up and re-purposed**  
(no dress or casual shoes, please)



## The following items will NOT be accepted during this event.



- ▶ **NO!** Styrofoam
- ▶ **NO!** Plastics/Packaging
- ▶ **NO!** Fluorescent Tubes and lamps (All types)
- ▶ **NO!** Ni-CD & Ni-MH batteries
- ▶ **NO!** Household size batteries (AA, AAA, C, D, 9V, etc.)
- ▶ **NO!** Ink/Toner Cartridges
- ▶ **NO!** Media (CD, DVD, floppy, VHS, Cassette, tapes)
- ▶ **NO!** PCB Ballasts
- ▶ **NO!** Wood
- ▶ **NO!** Refrigerators, Freezers, most water coolers, some dehumidifiers
- ▶ **NO!** Capacitors
- ▶ **NO!** Fire Extinguishers
- ▶ **NO!** Mercury Containing Devices (Thermostats, Ionization Smoke Detectors)



**Timmco**  
INSURANCE

Brian Timm  
Susan Ames | Derek Ames

1615 NE Broadway | 503-288-8818  
www.timmco.com

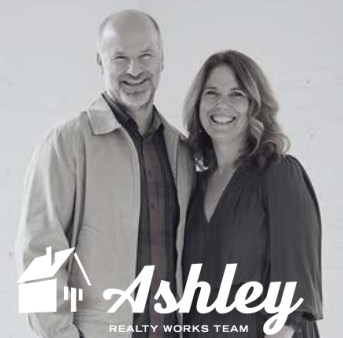
AUTO | HOME | BUSINESS | LIFE

**JOHN M. WYNN**  
ATTORNEY AT LAW  
McGill, Kapranos & Wynn  
Parishioner



Hollywood Professional Center, 3939 NE Hancock St., Ste. 305  
jmwpx@qwestoffice.net • 503-287-7333

**JOSÉ MESA AUTO WHOLESALE, LLC**  
"The mobile auto dealer who is always in your neighborhood."  
**YOUR DISCOUNT AUTO RETAILER SINCE 1992!**  
sales@josemesa.com 503-789-0438 www.josemesa.com  
NEW • USED • BUY • SELL • LEASE • TRADE • CONSIGN • BROKER • APPRAISE



**Ashley**  
REALTY WORKS TEAM

PARISHIONERS, NEIGHBORS, EXPERT REALTORS

**Wick & Karoline Ashley**

karoline@ashleyrealtyworks.com  
(503) 819-4851

2045 NE MLK JR BLVD  
Portland, OR, 97212






**Robben & Sons**  
HEATING Inc.  
Since 1932


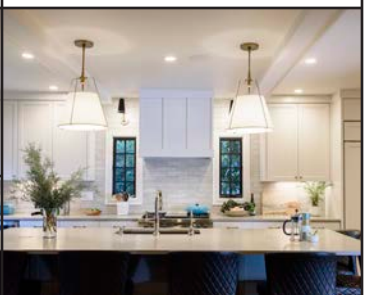
Heating & Cooling  
Residential & Commercial  
Boilers • Ductless • Electrical  
Gas • Oil • Heat Pumps  
Water Heaters • Generators

Colin O'Donnell, CCHS '20  
503-830-3090  
colin@robbenandsons.com



**WILLAMETTE**  
FINANCIAL ADVISORS, LLC  
PERSONALIZED ADVICE FROM TRUSTED ADVISORS

**James M Jones**  
Financial Advisor, CFP®  
Parishioner  
Direct 503.284.9200  
Office 503.7470306  
jimj@wfinadv.com

Whole house remodels  
• Kitchens • Bathrooms  
• Basements • Additions  
In-house architecture & design

Nathalie Roloff, Parishioner

503.245.0685  
rolloffconstruction.com  
4300 NE Fremont #130



CCB #140721  
WA#ROLOFC1873KU  
**ROLOFF**  
CONSTRUCTION



**MATT MORAN**  
Principal Real Estate Broker  
Windermere Realty Trust  
Parent, Parishioner & CC Family  
Matt, Anna, Emma, & Sofie  
503-781-9646  
moran@windermere.com





**The Madeleine Knights of Columbus**

Make a Difference  
in your Parish and Community.  
Become a Knight!

Call 503-701-5581



Providing Professional, High-Quality,  
and Compassionate Home Care

affinityatbethany.com/madeleine  
Call (503) 382-8926





Empowering athletes to fuel their training and elevate performance

**Sarah McCormick, MS, RDN**  
Sports Dietitian Nutritionist  
Madeleine Parishioner & Mom

503-270-3310 @teensportnutrition

**ANNE C. STEINER**  
ESTATE PLANNING  
ELDER LAW ATTORNEY

503.946.8361 • 1915 NE Cesar Chavez Blvd.  
PARISHIONER - anne.c.steiner@gmail.com

WILLS - TRUSTS - PROBATE  
GUARDIANSHIP - CONSERVATORSHIP



**Retrouaille**  
A Christian Peer Ministry  
A LIFELINE FOR  
HURTING MARRIAGES

Is your marriage tearing you and your family apart?

Weekends held 3 times per year in Oregon  
www.helpourmarriage.com  
503-704-7382

Donated by Kevin & Carol McMenamin

**Alec Bromka**  
**(w)here**  
Real Estate

503-505-3550  
Parent & Parishioner



**JOHN W. LOBO**  
**PAINTING**  
Custom Interior & Exterior  
Creative Finishes  
503-969-3337 CCB#89027  
Licensed Bonded Insured




**Sweetly Aimee, LLC**  
Custom Wedding and All-Occasion Cakes and Desserts

Aimee Holzschuh  
Parishioner & Parent  
503.998.7368  
www.SweetlyAimee.com

**DDI benefits**

**MEDICARE QUESTIONS? WE CAN HELP!**

Medicare can be complicated, but we can provide free unbiased information and help navigate the process to find just the right solution for you.



Emmett Dooney, '11  
Licensed Medicare Agent  
503.206.4080  
medicare@ddibenefits.com

**ADVERTISE YOUR BUSINESS HERE!**

Contact Rich Hammons  
bulletin@themadeleine.edu

**T.C. O'LEARY'S**  
a little irish  
PUB

2926 NE Alberta Street  
A little taste of Ireland!  
www.tcolearys.com



Parishioners Tom, Siobhan & Aine O'Leary

**ADVERTISE YOUR BUSINESS HERE!**

Contact Rich Hammons  
bulletin@themadeleine.edu

**Maria Fitzgerald**  
REAL ESTATE BROKER  
WINDERMERE REALTY TRUST  
503-680-9737  
Madeleine Mom & Parishioner




finding the home that fitz you...



Open Daily 10 am-7 pm  
17108 SE Powell Blvd., Portland  
www.svdppdx.org/store-details

Discount and free vouchers available,  
contact Lisa Hawkins 503.309.7968