



Furthering the Reign of God, Where All Are Welcome • November 23–24, 2024

## Thanksgiving Day: Mass 9:00 am

### Thanksgiving Collection devoted to St. Vincent de Paul

As is traditional here, the Thanksgiving Day Mass collection goes to support St. Vincent de Paul, helping them help families in need. Our community has always been very generous in supporting this ministry, and we know you will be again this year.

### Annual Food Drive kicks off

This weekend is the official kick off of the Saint Vincent de Paul Christmas food drive!

Our goal over the next 6 weeks, is to collect an additional 3,000 pounds of food to feed the hungry this Christmas. We need your help. Please think of us on your next grocery store visit, and hit those holiday sales!

## Madeleine Marketplace: December 5

*Fun, food, music, shopping, tree lighting, Santa and much more!*

Make your plans now to join in our annual tradition— The Madeleine Marketplace and Tree Lighting—Thursday, December 5, from 2-8 pm.



### Entertainment?

Christmas caroling, photos with Santa and Mrs. Santa, cookie decorating and more. And, of course, the Tree Lighting at 6:00 pm

### Volunteers needed

Plan to stay for a fun-filled afternoon and evening. Get your shopping started with 50 or more vendors in the Parish Hall and Fireside Room.

### We've got dinner covered

Cook's night off! We will have pizza, chili, soft drinks, bake sale goodies and much more.

**Bake Sale goodies needed**—We need your baked goods for our bake sale! Bake your best cookies, pies, cakes, candies, then bring them to the Parish Hall on Thursday, December 5 by 10:00 am.

Help make this night go off without a hitch by signing up for one of our volunteer slots. Sign up online at [www.themadeleine.edu/marketplace](http://www.themadeleine.edu/marketplace). Questions? Contact Julie Kupers [jkupers@themadeleine.edu](mailto:jkupers@themadeleine.edu) or call her at (720) 936-563.

*Our 2024 Advent devotional book, with reflections each day of Advent written by members of The Madeleine community, will be available at Masses beginning on Thanksgiving, or at the Parish Office. It will also be available for download at [www.themadeleine.edu/advent](http://www.themadeleine.edu/advent)*



## Inside This Week's Bulletin:

- ▶ **Madeleine Giving Tree**—Tags are on the tree this weekend! Make Christmas a bit brighter for children at Children of Incarcerated Parents and Community Transitional School. Details Page 4.
- ▶ **Bedding and Sock Drives**—Two worthy organizations, two worthy causes. Page 4.
- ▶ **Buildings & Grounds Committee seeking members**—We are looking for professionals in the planning, design and construction industry to advise Fr. B. See Page 2 for details.

## Our Lord Jesus Christ, King of the Universe

THE READINGS FROM DANIEL and the Book of Revelation share an apocalyptic vision of the Son of Man coming on the clouds to rule over all peoples. In John's Gospel, on the other hand, Jesus is already king. His everlasting authority comes from God. For his disciples – those who listen to his voice – eternal life is already possible.

### Pray for Our Faithfully Departed

- ▶ Paul Killorin—Funeral, November 30, 11 am
- ▶ Ben Ford—Funeral December 5, 11:00 am
- ▶ Jackie Santos
- ▶ Annie Young
- ▶ Mary Clare O'Brien
- ▶ Leann Stevenson

### Prayer Requests

For those who are ill, or in need of our prayers

- ▶ Brad Werth
- ▶ Refugio Sanchez
- ▶ Bob Burke
- ▶ Judy Anne Yap
- ▶ Danny Mitchell
- ▶ Christine Gregg
- ▶ Kitt & Corinne Jordan
- ▶ Jean Mitchell
- ▶ Ann & Quenton Czuba
- ▶ Charli Phipps

### Mass Intentions

- 11/23, Sat ..... Dick Zimmerman †
- 11/24, Sun, 8:00 am The Madeleine Community
- 10:00 am. .... Therese Fenzl
- 11/26, Tues. .... Dennis Wolters †
- 11/27, Weds. .... Donald Kelley †
- 11/28, Thurs ..... Casey Ferreira †
- 11/29, Fri ..... Donald Graham Jr †
- 11/30, Sat ..... Karmie Cavender †
- 12/01, Sun, 8:00 am The Madeleine Community
- 10:00 am. .... Leann Stevenson †

## Calendar This Week

### Sunday, November 24

8:00 am: Mass—Church  
10:00 am: Mass—Church  **ALSO LIVESTREAMS**  
10:00 am: Sacramental Prep—Fireside Rm  
11:10 am: First Reconciliation Practice—Church  
11:15 am: Laudato Si'—Zoom

### Monday, November 25

6:30 pm: FA Meeting—Fireside Rm

### Tuesday, November 26

▶ Nourish Our Neighbors-All School  
8:30 am: Mass—Church  
9:00 am: Adoration—Church  
4:00 pm: CYO Basketball Uniforms—Parish Hall

### Wednesday, November 27

8:30 am: Mass—Church  
12:00 pm: Office Closed, School Dismissed  
12:15 pm: Youth Group Meeting—Fireside Rm  
7:00 pm: Madeleine Choir Rehearsal—Church

### Thursday, November 28

▶ Thanksgiving-Parish Office Closed, No School  
8:30 am: FA—Fireside Rm  
9:00 am: Mass—Church

### Friday, November 29

▶ No School, Parish Office Closed  
8:30 am: Mass—Church

### Saturday, November 30

11:00 am: Paul Killorin Funeral—Church  
Reception follows in Fireside Room  
3:30 pm: Confession—Church  
5:00 pm: Mass—Church

### Sunday, December 1

8:00 am: Mass—Church  
10:00 am: Mass—Church  **ALSO LIVESTREAMS**  
11:15 am: OCIA Class—Fireside Rm  
3:00 pm: Chaplin Cello Studio Recital—Old  
Madeleine Church

### Upcoming Events

- ▶ **Madeleine Marketplace:** December 5  
[www.themadeleine.edu/marketplace](http://www.themadeleine.edu/marketplace)
- ▶ **Feast of the Immaculate Conception:**  
December 9; Masses at 9:00 am and 6:30 pm
- ▶ **Fish Fry:** Friday, April 25
- ▶ **St. Mary Magdalene Day:** July 19

**Parish Office Closed  
November 27 (noon),  
Nov. 28 & Nov. 29 for  
Thanksgiving Holiday**

## PARISH LIFE

### Madeleine Buildings & Grounds looking for new members

*Seeking professionals in the planning, design, construction industries*

The Madeleine Building and Grounds committee is now back in session! We are looking for professionals in the planning, design and construction industry who are willing to advise our Business Manager, My Schoning, and Father B on current and future projects, operations and management of our beautiful and expansive campus, grounds and facilities.

We plan on meeting once a quarter, starting in 2025. Please consider this service if you have the skills as listed above, and are a current Madeleine parishioner and/or parent.

Please contact me if you have questions or are interested in joining. Thank you!

—Erin Couch, AIA,  
Building and Grounds Chairperson  
[erin@creativeabandon.com](mailto:erin@creativeabandon.com)

### Daily Prayer for Peace with Therese

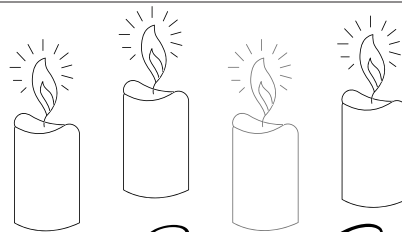
*Begins November 27 • Daily for 27 days • Via Zoom*

Those of you who are in the book club may remember reading *With God in Russia*. I was deeply inspired by this autobiography. I read recently that Fr. Walter Cizek's cause for canonization has been started. I also came across a book (Walter J. Cizek, SJ, *Triple Novena, Extraordinary Experiences, Powerful Prayer*) Edited by Marc Lindeijer, SJ, and Rosemary Stets, OSF. They knew Fr. Cizek after his return from 23 years in prisons in Russia. The book offers a triple novena with his reflections from 3 settings: Lubyanka Prison, the work camps, and the town of Norilsk.

I invite you to pray these novenas with

me and ask for the intercession of Fr. Walter Cizek in praying for peace in our country and our world. I will lead 27 days of these prayers beginning on November 27 and ending on December 23. I will lead them on Zoom at 6:30 pm.

The prayer sessions will last about 15 minutes each. You may join me in as many as work for you. You do not need to attend them all. Please let me know if you would like to join me and send me your email address so that I can send you the link, [tfeznl@themadeleine.edu](mailto:tfeznl@themadeleine.edu)



### Advent Small Groups

In-Person, Tuesdays or Saturdays

Pick a group that works best with your schedule and join us for reflections on the gospel readings this Advent season!

Tuesdays 1:45pm-3:00pm, Dec. 3rd, 10th, & 17th

Saturdays 2:00pm-3:15pm, Dec. 7th, 14th, & 21st

The Madeleine  
St. Catherine Room

Sign up with QR code or visit [www.bit.ly/afs-2024](http://www.bit.ly/afs-2024)  
email [Lcraig@themadeleine.edu](mailto:Lcraig@themadeleine.edu)



**Today as we celebrate Christ the King, may we open the door of our heart** so wide that we may listen to the voice of Jesus calling us to help build his kingdom here on earth. During the month of October, through your gifts, the Society of St. Vincent de Paul was able to bring God's Kingdom of love and mercy to 33 families, providing: 636 lbs. in food from the pantry plus \$949 in gift cards, and \$868.73 help with rent, utilities and other bills.

—Lisa Hawkins, (503) 309-7968

## Baptism Preparation Classes

Preparing for your child or godchild's Baptism? Please visit our website at [www.themadeleine.edu/faithformation](http://www.themadeleine.edu/faithformation) for newly updated information about Baptism registration and classes for parents and godparents. Three to four dates for classes are offered each month at a variety of times to accommodate parishioners and their schedules.

A full list of class options through December is available on the website.

To register for a class, please email Lauren Craig, [lcraig@themadeleine.edu](mailto:lcraig@themadeleine.edu) or submit a registration form to the Parish Office no later than 48 hours before the class you would like to attend.

## Interested in Becoming Catholic?

RCIA (Rite of Christian Initiation of Adults) is now OCIA (Order of Christian Initiation of Adults) as determined by the US Conference of Bishops. But the message is the same, ALL are welcome to join our faith community. If you know someone who might be interested in joining the Catholic Church or if you would like to

explore joining the Catholic Church, please let us know. Classes to explore Catholicism are underway. Registration forms are available at [www.themadeleine.edu/faithformation](http://www.themadeleine.edu/faithformation) or in the back of the church. For more information contact Donna Mason at [ocia@themadeleine.edu](mailto:ocia@themadeleine.edu)

## Madeleine Book Club!

Are you a book-worm? Would you enjoy opportunities to meet with other parishioners and friends to share your thoughts about the contents of some very excellent books? If so, we invite you to join us at future discussion sessions. We will not be meeting in December, but invite you to read ahead for our post holiday gathering in January, when we will be discussing Transatlantic, by Colum McCann. For details and/or to be added to our email list, please contact our MBC coordinator: Gretchen Stevenson, [gypsyfrau47@yahoo.com](mailto:gypsyfrau47@yahoo.com) or 503-312-6834.



The Madeleine Knights of Columbus are proud to be sponsoring a Red Cross Blood Drive on January 11, 2025.

## Knights of Columbus Blood Drive

The Madeleine Knights of Columbus are proud to be sponsoring a Red Cross Blood Drive on January 11, 2025.

Appointments can be made directly via the Red Cross website [www.redcrossblood.org](http://www.redcrossblood.org) and using the Sponsor Code: MadeleineKnights.

Once there, you can make appointments for whole blood donations, or power red donations (apheresis).

The drive will run from 9 until 2 and there are many appointments available.

Every donation can help to save up to 3 lives which is quite the way to start the New Year! The Knights and the Parish look forward to seeing you in January at the Parish Hall.

We know this date seems very far away, but it will sneak up fast with the holidays.



## Book Drive for Oregon Book Bank —8th Grade Capstone Project

We are doing a book drive for the Oregon Book Bank, an organization that gives free and clean books to kids without the privilege of literature. For our capstone service project, we are required to do at least 10 hours of service. The Capstone service project is something that all 8th graders accomplish during their school year. The meaning of the Capstone project is to bring us closer to God by caring for the marginalized community. For the book drive, we only accept graphic novels and picture books (no chapter books please) for children without them. The donation box will be in the front room of the Church. The drive ends on December 1.

*We appreciate your support!*

*Ronan McCormick, Henry Sinnott, Jackson Ehleringer, and Zachary Resch*

## Ministries, teachers, service groups

Please send in photos by December 18 for the annual The Madeleine in Service edition of our parish bulletin on Christmas! Instructions and upload link at [themadeleine.edu/photos](http://themadeleine.edu/photos)

## Weekly Mass Times

### Regular Mass Times:

Tuesday, Wednesday, Friday . . . . . 8:30 am  
 Thursday . . . . . School not in session: 8:30 am  
 School in session: 2:00 pm  
 Saturday Vigil . . . . . 5:00 pm  
 Sunday . . . . . 8:00 am, 10:00 am

**Penance** . . . . . Saturday, 4:00–4:40 pm

**Adoration** . . . . . Tuesdays, 9:00 am–2:00 pm

## Parish Office

**Hours** . . . . . Tuesday–Friday, 9:00 am–3:00 pm

**Phone:** 503-281-5777 . . . . . **Fax:** 503-281-0673

**School Office** . . . . . 503-288-9197

## Parish Staff

**Rev. Bonaventure Rummell**—Administrator  
[fatherbonaventure@themadeleine.edu](mailto:fatherbonaventure@themadeleine.edu) . . . ext. 111

**Msr. Timothy Murphy**—In Residence

**Rev. Nazario Atukunda**—In Residence

**Deacon Mike O'Mahoney**—Permanent Deacon  
[deaconmike@themadeleine.edu](mailto:deaconmike@themadeleine.edu)

**Tresa Rast**—School Principal  
[trast@themadeleine.edu](mailto:trast@themadeleine.edu) . . . . . 503-288-9197

**My Schoning**—Business Manager  
[mhoang@themadeleine.edu](mailto:mhoang@themadeleine.edu) . . . . . ext. 114

**Linda Scheurman**—Bookkeeper  
[lscheurman@themadeleine.edu](mailto:lscheurman@themadeleine.edu) . . . . . ext. 119

**Maria Manzo**—Director of Music  
[mmanzo@themadeleine.edu](mailto:mmanzo@themadeleine.edu) . . . . . ext. 113

**Lauren Craig**—Faith Formation/Sacramental Prep  
[lcraig@themadeleine.edu](mailto:lcraig@themadeleine.edu) . . . . . ext. 116

**Minh-Ha Nguyen**—Parish Admin Assistant  
[mhnguyen@themadeleine.edu](mailto:mhnguyen@themadeleine.edu) . . . . . ext. 112

**Guy Allen**—Facilities Manager, Events Manager  
[gallen@themadeleine.edu](mailto:gallen@themadeleine.edu)

**Gretchen Stevenson**—Office  
[gstevenson@themadeleine.edu](mailto:gstevenson@themadeleine.edu) . . . . . ext. 110

**Julie Kupers**—Special Events  
[jkupers@themadeleine.edu](mailto:jkupers@themadeleine.edu) . . . 720-936-5635

**Rich Hammons**—Director of Communications  
[rhammons@themadeleine.edu](mailto:rhammons@themadeleine.edu) . . . . . ext. 129

## Sacraments

**Infant Baptism** . . . . . Lauren Craig, ext 116

**First Reconciliation, First Eucharist**—  
 Rose Horton . . . [sac-prep@themadeleine.edu](mailto:sac-prep@themadeleine.edu)

**OCIA** (Formerly RCIA)—  
 Donna Mason, . . . . . [ocia@themadeleine.edu](mailto:ocia@themadeleine.edu)

**Marriages** . . . . . Fr. Bonaventure, ext 111

**Anointing** (Emergency) . . . . . 971-301-4421

**Funerals**—  
 Therese Fenzl . . . . . [tfenzl@themadeleine.edu](mailto:tfenzl@themadeleine.edu)

## Councils & Contacts

**Pastoral Council**—Dan O'Brien . 503-206-2843  
[pastoral-council@themadeleine.edu](mailto:pastoral-council@themadeleine.edu)

**Finance/Admin**—John Garrow . 503-803-5693

**Buildings & Grounds**—Erin Couch, 503-281-9575

**School Advisory**—Tim Resch . . 503-984-4607

**Facility Requests**—[themadeleine.edu/facilities](http://themadeleine.edu/facilities)

**Maintenance Requests**—My Schoning  
[mhoang@themadeleine.edu](mailto:mhoang@themadeleine.edu) . . . . . ext. 114

**Knights of Columbus**—  
 Dan O'Donnell . . . . . 503-440-9415

**Ministry Schedule**  
[www.themadeleine.edu/minister-schedule](http://www.themadeleine.edu/minister-schedule)

**Bulletin submissions due 5:00 pm Tuesday**  
 Email to [bulletin@themadeleine.edu](mailto:bulletin@themadeleine.edu)



# Mmm...Pancakes!

KNIGHTS OF COLUMBUS PANCAKE BREAKFAST  
SUNDAY, DECEMBER 8 AFTER 10:00 MASS

Join us in the Parish Hall for a great pancake  
breakfast! Lots of yummy food for the family.

No fixed prices...donations accepted



## Upcoming Concerts

OC = Old Madeleine Church MC = Main Church

- ▶ **November 23, 7:30 pm OC** •  
Cascadia Composers • Fearless Lieder •  
[www.cascadiacomposers.org](http://www.cascadiacomposers.org)
- ▶ **December 3, 7:00 pm OC** •  
45th Parallel Universe • The Portland School •  
[45thparallelpdx.org](http://45thparallelpdx.org)
- ▶ **December 8, 3:00 pm MC** •  
Bravo! Concerts Northwest • Handel's  
Messiah • [bravoconcerts.com](http://bravoconcerts.com)
- ▶ **December 15, 8:00 pm OC** •  
45th Parallel Universe • A Cello Christmas •  
[45thparallelpdx.org](http://45thparallelpdx.org)
- ▶ **December 16, 7:00 pm OC** •  
45th Parallel Universe • A Cello Christmas •  
[45thparallelpdx.org](http://45thparallelpdx.org)

“Prayer opens our hearts to the Lord, and the Holy Spirit changes our lives  
when He enters. We should therefore pray, so that our hearts are opened to  
make space for the Spirit. #YearOfPrayer.”

—Pope Francis via X (Twitter) @pontifex

**ADVENT  
CONCERT**

CELEBRATE THE  
IMMACULATE  
CONCEPTION  
FEATURING  
SINGER  
SONGWRITER  
SARAH HART



**DECEMBER 8 2024**  
6:30 PM | FREE WILL OFFERING

HOLY FAMILY CATHOLIC CHURCH  
7525 SE CESAR E. CHAVEZ BLVD.  
PORTLAND, OR 97202

FOOD! GAMES!  
FAITH SHARING! RAFFLE & PRIZES!


**THE MADELEINE  
Youth Group**

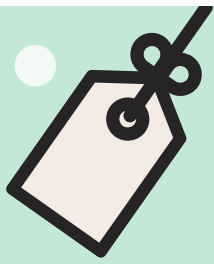
6TH-8TH GRADERS

NEXT MEETING:  
WEDNESDAY, NOVEMBER 27TH

12:15 PM - 1:45 PM

RSVP TO  
LCRAIG@THEMADELEINE.EDU BY  
NOV. 22ND





# The Madeleine Giving Tree 2024

**Benefits Children of Incarcerated Parents & Community Transition School**

The tradition of The Madeleine Giving Tree will continue this year and the need has never been greater. This year we will be supporting two worthwhile and grateful organizations.

## **Northwest Family Services Children of Incarcerated Parents—**

These children face countless barriers including abuse, neglect, homelessness and food insecurity, as well as having one or both parents incarcerated.

## **Community Transitional School—**

CTS serves students ages 4-14 from Multnomah County who live in homeless and domestic violence shelters, cheap motels, on the floor of a friend's home and even inside of their cars. Some are from families that are on the brink of losing their housing; others have just recently managed to move into permanent housing. All children are in situations where poverty and uncertainty dominate much of their young lives. Please read the tags carefully for this group...due to their mobile nature, the tags indicate specific needs.

**Please leave these gifts unwrapped**

**Tags will be hung on the tree in the Parish Hall driveway the weekend of November 23-24. Get there early...they get claimed very quickly!**



## **Sleep in Heavenly Peace Bedding drive**

Through Christmas, Sleep in Heavenly Peace is accepting bedding donations at The Madeleine. Please look for the blue bins located in the church vestibule or bring your donations to the Parish Office during business hours.



Sleep in Heavenly Peace has provided 300 beds to children in the Portland area. Many of those beds were built and delivered by Madeleine parishioners and provided with sheets, blankets and pillows from Madeleine bedding drives.

Bedding needs to be for twin size beds (not extra long, please) sheet sets, blankets and comforters, mattress protectors and pillows. All donations must be new and still in the original packaging.

Thank you Madeleine Community for the continued support!

## **Annual Sock Drive is underway!**

Please join us in helping our neighbors in need this winter. The Madeleine Knights of Columbus and The Madeleine School are sponsoring the annual Sock Drive. Blue barrels are in the church vestibule and the school entrance.

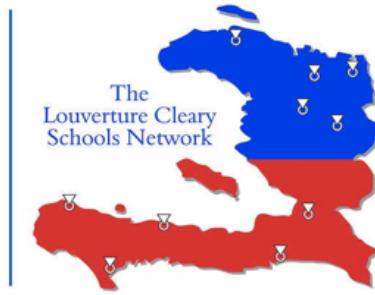


*NOTE: Please look for socks with a wool blend and no cotton.*

Socks will be donated to those in need through Transition Projects and Saint André Bessette.

Don't have time to go sock shopping? Or would you prefer we take your cash and purchase wool socks in bulk? Just scan the QR code at right, or drop off a donation at the Parish Office.





## **-THE HAITIAN PROJECT OPEN HOUSE- A time of thanksgiving and appreciation for our supporters**

As we approach the end of the year, all members of our Madeleine Parish and their guests are invited to join us for a special afternoon of food, drink, and conversation to celebrate our work for The Haitian Project.

Importantly, in an effort to widen our outreach, we encourage you to invite and bring friends and acquaintances who might not know of our special work on behalf of the children of Louverture Cleary School in Haiti.

**Open House  
Saturday, December 7, 2024  
2 pm to 5 pm (Brief THP update at 3 pm)  
Join us for light refreshments.**

**Home of Dave and Peggy Albertine  
2605 NE 25<sup>th</sup> Avenue  
Portland, Oregon 97212**

Please RSVP your attendance and number of guests to Dave Albertine via email to [davea51@gmail.com](mailto:davea51@gmail.com) by Dec. 4th  
Further questions, call 503-282-7848



OPEN HOUSE  
January 26th  
11:30-1:30

## The Madeleine School

*Where You Belong*

The Madeleine School uniquely and lovingly combines academics, faith and service in an inclusive community where all are welcome, regardless of faith tradition.

Find out more at our open house.

PreK - 8th Grade

### Women's Coffee Club

Joy to the World! All women of the Madeleine Parish are invited to join us for coffee, conversation, and some Christmas cheer Monday, December 9th, from 10:00 to 11:30. We meet upstairs in The Madeleine Old Church gathering space. Access doors are on NE 23rd. Signs will be posted. Due to security, doors will be unlocked only between 9:30 and 10:15. It's easy access to the elevator. Have a question or need a ride, contact Jody McDonald 360-870-5470.

### Got a Green Thumb?

*Join the newly forming Madeleine Garden Club!*

The school and parish landscape needs our love. Join us on Wednesdays (unless it's pouring rain), after the school morning drop-off this fall to help with or learn about fall garden maintenance, and help us plan for next year's growing season!

No commitment or experience necessary! If you can't make it on Wednesdays but want to be involved, give Julie Kupers a call and we can help you find another time to get your hands dirty.

This is a fun way to get to be in nature AND earn volunteer hours! Snacks and drinks provided. For more info, contact Julie Kupers 720-936-5635, or just show up on Wednesday morning between 8:15-10:30!

## 45th Parallel Universe

Join us for our December, January and February Concerts!

### THE PORTLAND SCHOOL

December 3 | 7:00 pm  
The Old Madeleine Church  
Featuring: Pyxis Quartet



### NEW YEAR, NEW AKIHO

January 28 | 7:00 pm  
The Patricia Reser Center for the Arts  
Featuring: Gemini Percussion & 45th Parallel Players



### A CELLO CHRISTMAS

December 15 | 8:00 pm  
December 16 | 7:00 pm  
The Old Madeleine Church  
Featuring: North Pole Cello Sextet



### 2ND ANNUAL MISSISSIPPI CHAMBER MUSIC HOLIDAY PUB CRAWL!

December 17  
Pub Crawl: 7:00 pm, Mendelssohn's, other locations TBD  
Mainstage show: 9:00 pm, Mississippi Studios

### A GAY OLD TIME

February 18 | 7:00 pm  
The Old Madeleine Church  
Featuring: Arcturus Winds



# RMD for 2024?

If you are at least 70½ years of age and are required to take a minimum distribution from your IRA, you can donate part or all of that distribution to The Madeleine, tax free! For information, contact parish Business Manager, My Schoning, 503-281-5777 or mhoang@themadeleine.edu.

Purchase tickets at

45THPARALLELPDX.ORG



45<sup>TH</sup> PARALLEL  
UNIVERSE

## RECYCLING PROGRAMS AT THE MADELEINE

Marked collection bins in the breezeway facing 23rd Ave.

The Madeleine's Laudato Si' Circle and Care for Creation Ministry have joined with U. S. based recycler, Terracycle, to offer our parish, school, and community opportunities to responsibly recycle specific items (primarily plastics) not generally handled at curbside. Terracycle has added more manufacturers to its program, and in turn, we have expanded our recycling offerings. Here is a current listing of what we are collecting. Please keep this in mind:

- ▶ Do not include garbage or items not specifically mentioned in the descriptions.
- ▶ Empty containers of contents. No need to wash first; ensure packaging is dry.



### KROGER FLEXIBLE PLASTICS

All Kroger brand flexible plastic packaging can now be accepted. Includes Private Selection and Simple Truth brands as well.



### HAIR CARE APPLIANCES AND TOOLS

All types and brands of hair care tools and appliances, including hair dryers, straightening irons, curling irons, thermal brushes and mini tools.



### SWIFFER REFILLS

Swiffer only brands of Sweeper™ Dry, Wet, and XL Refills, WetJet Refills™, and Duster™ Refills.



### LATE JULY® SNACKS

All Late July® snack packaging as seen in these examples. Limited to Late July brand only.



### GILLETTE® AND VENUS RAZORS AND RAZOR BLADES

All brands of blades and razors (systems and disposable units, and replaceable-blade cartridge units), rigid plastic packaging, and flexible plastic bag packaging.



### ORAL CARE PRODUCTS

All brands of used or empty oral care products, including toothpaste tubes, tooth brushes, and dental floss containers.



### FABRIC CARE PRODUCTS & PACKAGING

From Tide, Gain, Downy, NBD and Dreft, including plastic components (dispensing cup, bag, nozzle, nozzle clip), and plastic packaging wrap, flexible plastic bags, rigid plastic tubs and lids, and Tide To Go pen.



### AIR CARE PRODUCTS AND PACKAGING AND MR. CLEAN DEEP CLEANING MIST

All brands of air and home cartridges, air and home care plugs, air and home care trigger heads, and air and home care plastic and film packaging. No aerosol containers. Remove as much of remaining product as possible.



### USED SOCKS (ALL BRANDS)

Used clean socks only; pairs and singles are accepted. Not meant for new sock donations. No stockings, tights, or pantyhose.



### REDYPER DISPOSABLE DIAPERS (Offsite subscription service)

Subscription service for purchasing and recycling Redyper brand disposable diapers through Terracycle

Details on all programs at [www.themadeleine.edu/terracycle](http://www.themadeleine.edu/terracycle)



# In Memoriam

## THE MADELEINE FAMILY REMEMBERS

### Paul Killorin

Funeral Mass • Saturday, November 30 • 11:00 am

A Funeral Mass will be held for Madeleine parishioner Paul Killorin on Saturday, November 30, 11:00 am at The Madeleine. A Rosary will precede the Mass at 10:30 am.

Paul Joseph Killorin Sr. was born November 28, 1928 in Pueblo, CO. He was the son of Mary (Popovich) and Paul J. Killorin and extremely proud of his Irish and Croatian roots. He died in Camas, WA on October 4, 2024, at the age of 95. Paul was a devoted husband, father, grandfather, uncle and friend.

He grew up in Portland, OR during the Great Depression and lost his own father when he was 6 years old. Soon after, Paul started delivering newspapers and doing odd neighborhood jobs to support his mother and two sisters.

After graduating from Central Catholic High School, Paul enlisted in the United States Army. He was first assigned to 1st Company Universal Military Training, Experimental Unit, Fort Knox, KY, and then attached to the 101st Airborne Division, serving as a drill sergeant. After completing his military service, Paul attended the University of Portland, earning a Bachelor of Arts degree in English Literature, while working for the Portland Fire Bureau. While teaching high school, he went on to earn two master's degrees from University of Portland; one in Educational Administration and the other in English Literature. He later was selected to be one of the original founding

faculty members of the brand new Portland Community College, where he taught for a full 30 years more.

Paul married Joan Harriet Liberman on July 1, 1961 at The Madeleine Catholic Church. They reared their family of four children in Northeast Portland and were long time members of The Madeleine Catholic Parish.

Paul spent his retirement doing work for the Catholic church. He was active in the Knights of Columbus, Serra Club and St. Vincent de Paul Society, and volunteered at Emanuel Hospital in the Spirituality Care Department for 21 years as a Eucharistic Minister. After Joan's death in 2008, Paul moved to Calaroga Terrace where he served into his 90's as the In-Residence Parish contact for Holy Rosary Church. At Calaroga he inaugurated weekly Mass on Saturdays and distributed communion to home-bound residents.

Paul enjoyed vacationing at the Oregon coast and traveling in Europe and the Middle East, especially in Israel. Other pursuits included sports as a young man, going to the symphony, flying lessons and even parachuting. Paul's most recent jump was to commemorate his 85th birthday!

He cherished his family and friends and was grateful for every kind gesture. He never passed up an opportunity to find joy in small things, share a story or express his contagious laugh and playful, spirited personality. He was



deeply loved and will be greatly missed.

Paul is predeceased by his wife Joan in 2008 and his sisters Mary Elizabeth Killorin and Eleanor Osborn (Harvey). He is survived by his significant-other, Barb Fritz, children Anne Lewis (Jon), Kate Gratzner (Rick), Paul Killorin Jr. (PJ) and Kara Killorin; grandchildren Joshua and Alec Lewis, Sarah (Lewis) Engman, Audrey and Ella Gratzner, and Patrick, Hannah and Margaret Killorin Upkes. Paul treasured the role of grandfather, aka G-PA!

In lieu of flowers, please provide donations to St. Charles Catholic Church, Holy Rosary Church, The Madeleine Catholic Church, Central Catholic High School, or St. Vincent de Paul Council.

*Please pray for Paul, his family, and all the faithfully departed from The Madeleine*

# JESUS CHRIST

## THE KING OF THE UNIVERSE

Today's celebration of Jesus Christ, King of the Universe, is the crowning of the liturgical year. It reminds us that creation does not advance at random, but is proceeding toward a final destination: the definitive manifestation of Christ as Lord of history and of all creation. The conclusion of history will be God's eternal kingdom when all creation is restored to its original right relationships: sin into grace, fear into trust, death into resurrection.

Jesus proclaimed the simple yet radical message of God's new kingdom, which was his code word for the transformed reality where God rules as the center of meaning and the object of all action. By following Jesus' example we will discover how to realize his dream for a kingdom community by living now as God had wanted everyone to live since the time God first ordered creation—in right relationships with God and with one another that were grounded in love, expressed in justice and oriented to the well-being of all.

It would mean very little, however, if we believed Jesus was King of the Universe, but did not make him Lord of our lives. Everything is empty if we do not personally accept Jesus and if we do not also accept his way of being King. Jesus' kingdom invitation challenges us to notice God in our midst and make a commitment to relate to God. It challenges us to see the world as God does, evaluate it as God does and act in it as God does. It challenges us to link our hope for a new order with God's dream for the right kind of community. Finally, it challenges us to engage in the real cosmic power struggle between God and Satan, good and evil to reorder our world as God desires it to be.



## THE SOLEMN FEAST OF CHRIST THE KING

Although there is much biblical evidence that Jesus was considered a royal figure, the liturgical celebration of Our Lord Jesus Christ, King of the Universe only began in 1925 when Pope Pius XI established it to reaffirm that Jesus is ruler over both creation and history. Originally, it was celebrated on the final Sunday of October, prior to All Saints Day. In 1969, to emphasize its importance, Pope Paul VI moved it to the last Sunday before Advent. So now the old liturgical year ends by celebrating Christ's kingship and the new year begins with Advent, when we await the coming of Christ to rule our hearts and lives.

## SEASONS OF THE LITURGICAL YEAR

**Advent** begins the liturgical year on the fourth Sunday before Christmas. A season of hope as well as penance, Advent features the writings of the Old Testament prophets in its Mass readings.

**Christmas** begins with Christmas Day, goes through Epiphany and concludes with the Baptism of the Lord.

**Lent** is a 40 day preparation for Easter that focuses on fasting, prayer and almsgiving. Lent is a time to reflect on how well we are living out our baptism.

**The Paschal or Easter Triduum** (from the Latin, three days) begins with the Holy Thursday Mass of the Lord's Supper and continues until Easter evening.

The **Easter Season** extends from Easter Sunday through Pentecost Sunday. During this time, the Church reflects on the mystery of our redemption through the suffering, death and resurrection of Jesus.

**Ordinary Time** is the only liturgical season that comes in two sections. The first begins with the Baptism of the Lord and goes until Ash Wednesday. The second follows Pentecost and concludes with the Feast of Christ the King.

## THE PARADOX OF JESUS AS CHRIST AND KING

In the Gospels we learn that joining Jesus' title of "Christ" (in Hebrew *messiah*, God's anointed one who would restore the right order of all creation as God wanted it to be) and "King" (an earthly ruler who would rule God's covenant people according to God's guidelines in the Law or *torah*) did not go together easily because Jesus had no political ambitions. For him there was no king but God, and Jesus' work was to establish God's kingly rule over the covenant people, over all the nations, and over all creation. So his followers had to be understand the idea of Jesus as king in a new and different way.

Pope Francis reminds us that "Jesus revealed himself as king only in the event of the Cross. On the cross Jesus' kingship shines forth in godly fashion: his royal throne is the wood of the Cross! With Christ, we know very well that the King whom we follow and who accompanies us is very special: he is a King who loves even to the Cross and who teaches us to serve and to love. And so we understand that it is in giving ourselves, in emerging from ourselves that we have true joy and that, with his love, God conquered evil.

"The Gospel in fact presents the kingship of Jesus as the culmination of his saving work, and it does so in a surprising way. History teaches us that kingdoms founded on the force of arms and on the abuse of power are fragile and sooner or later collapse. But the kingdom of God is founded on his love and is rooted in hearts, conferring peace, freedom and fullness of life upon those who embrace it."

## OUR CHALLENGES OF FOLLOWING JESUS OUR KING

Everyone who chooses to make a faith commitment to follow Jesus as a Christian is invited to continue the work of Jesus to make this dream of a kingdom community into a reality, to realize it by living the kingdom way now.

We must use the Bible's stories, examples, instruction, wisdom, and information to discover God's ideas for a radically different type of social existence that so far has not been achieved: a community of non-domination, non-violence, and peaceful conflict resolution. To live this way ensures that Jesus' goal of building God's kingdom on earth will be accomplished.

Jesus not only invites us to follow him but to see the world as he does and thus live the way he does. Adopting his new kingdom worldview changes everything for those who accept it. The Good News about God's kingdom begun in Jesus' life, death and resurrection challenges our commonly accepted view of the world. What if things are not as we think they are? What if things could be different? What would our world be like if God really were recognized as its ruler? What then?





**Timmco**  
INSURANCE

Brian Timm  
Susan Ames | Derek Ames

1615 NE Broadway | 503-288-8818  
www.timmco.com


AUTO | HOME | BUSINESS | LIFE

**JOHN M. WYNN**  
ATTORNEY AT LAW  
McGill, Kapranos & Wynn  
Parishioner




Hollywood Professional Center, 3939 NE Hancock St., Ste. 305  
jmwpxd@qwestoffice.net • 503-287-7333

**JOSÉ MESA AUTO WHOLESALE, LLC**  
"The mobile auto dealer who is always in your neighborhood."  
**YOUR DISCOUNT AUTO RETAILER SINCE 1992!**  
sales@josemesa.com 503-789-0438 www.josemesa.com  
NEW • USED • BUY • SELL • LEASE • TRADE • CONSIGN • BROKER • APPRAISE



**Ashley**  
REALTY WORKS TEAM

PARISHIONERS, NEIGHBORS, EXPERT REALTORS

**TIM WALTERS**   
Principal Broker

The most trusted name in Real Estate!

Committed to the NE Portland  
Neighborhoods since 1991

**Tutor/Coach**  
Helping K-5 Kids in

- Reading, Writing, & Math
- Learning Spanish
- Social Emotional Health

**Yanick Mesa**  
503-789-2414  
yanickmesa@gmail.com



THE LEARNING SUCCESS WAY  
INSPIRE. LEARN. SUCCEED.



Empowering athletes to fuel their training and elevate performance

**Sarah McCormick, MS, RDN**  
Sports Dietitian Nutritionist  
Madeleine Parishioner & Mom

503-270-3310 @teensportnutrition

Wick & Karoline Ashley  
karoline@ashleyrealtyworks.com  
(503) 819-4851  
237 NE Broadway Suite 100

**RE/MAX**  
equity group



503-545-1880 | TimWaltersRealtor@Gmail.com | TimWaltersPc.com



*Beaumont Vision: providing full-service eyecare for all ages, including comprehensive exams, glasses and contacts*

Dr. John R. Lewis  
Stop by to view our unique eyewear  
Most insurances accepted

*Beaumont Vision*

4331 NE Fremont St  
Ph: 503-331-3937

**ADVERTISE YOUR BUSINESS HERE!**

**Mark McGinnis**  
Parishioner, Parent  
Mortgage Advisor  
NMLS 98586  
503-348-4917  
"It's about service!"



mark@theorymortgage.com

**THEORY**  
MORTGAGE

**ANNE C. STEINER**  
ESTATE PLANNING  
ELDER LAW ATTORNEY

503.946.8361 • 1915 NE Cesar Chavez Blvd.  
PARISHIONER - anne.c.steiner@gmail.com

WILLS - TRUSTS - PROBATE  
GUARDIANSHIP - CONSERVATORSHIP

**DDI benefits**

**MEDICARE QUESTIONS? WE CAN HELP!**

Medicare can be complicated, but we can provide free unbiased information and help navigate the process to find just the right solution for you.



Emmett Dooney, '11  
Licensed Medicare Agent  
503.206.4080  
medicare@ddibenefits.com

**BUY OR SELL**

**OUR TEAM CAN HELP!**



**Opt.**  
REAL ESTATE

**JEFF KERSTEN**  
REALTOR®  
503.720.9179  
jeff@theopt.com

Various sizes available.  
Contact Rich Hammons  
bulletin@themadeleine.edu



**WILLAMETTE**  
FINANCIAL ADVISORS, LLC  
PERSONALIZED ADVICE FROM TRUSTED ADVISORS

**James M Jones**  
Financial Advisor, CFP®  
Parishioner  
Direct 503.284.9200  
Office 503.7470306  
jjmj@wfinadv.com



**T.C. O'LEARY'S**  
a little irish  
PUB

2926 NE Alberta Street  
A little taste of Ireland!  
www.tcolearys.com



Parishioners Tom, Siobhan & Aine O'Leary

**Retrouvaille**  
A Christian Peer Ministry  
A LIFELINE FOR HURTING MARRIAGES

Is your marriage tearing you and your family apart?

Weekends held 3 times per year in Oregon  
www.helpourmarriage.com  
503-704-7382

Donated by Kevin & Carol McMenamin

**JOHN W. LOBO PAINTING**  
Custom Interior & Exterior  
Creative Finishes  
503-969-3337 CCB#89027  
Licensed Bonded Insured

Sweetly Aimee, LLC  
Custom Wedding and All-Occasion Cakes and Desserts

Aimee Holzschuh  
Parishioner & Parent  
503.998.7368  
www.SweetlyAimee.com




**Maria Fitzgerald**  
REAL ESTATE BROKER  
WINDERMERE REALTY TRUST  
503-680-9737  
Madeleine Mom & Parishioner



**maria fitzgerald**  
finding the home that fitz you...

**PAUL MYERS, Ph.D., LLC**  
PSYCHOTHERAPY, COUNSELING & CONSULTING SERVICES

(503) 381-6685 paulmyersphdpdx@gmail.com  
www.paulmyersphdpdx.com



**THEORY**  
MORTGAGE

Beating Banks Daily

Brian DuVal  
503-850-7667

NMLS 5912, NMLS 1848246

Whole house remodels

- Kitchens • Bathrooms
- Basements • Additions

In-house architecture & design

Nathalie Roloff, Parishioner

503.245.0685  
roloffconstruction.com  
4300 NE Fremont #130

CCB #140721  
WA#ROLOFC1873KU



**ROLOFF**  
CONSTRUCTION