



THIS WEEK AT THE MADELEINE

Furthering the Reign of God, Where All Are Welcome • November 9–10, 2024

Remembering our beloved dead

The month of November is traditionally the time in the Catholic Church when we remember those who have passed, both in the previous year and before.

Photos or Memorial Cards

Please bring photos or memorial cards of your deceased family members and friends to place on the Table of Remembrance. Drop them off at the Parish Office, or bring them

with you when you attend Mass. Please make sure all photos are clearly marked on the back with name and phone number so they can be returned.

Knights of Columbus+Madeleine School Sock Drive begins

Please join us in helping our neighbors in need this winter. The Madeleine Knights of Columbus and The Madeleine School are sponsoring the annual Sock Drive.

Blue barrels will be in the church vestibule and the school entrance beginning November 9.

NOTE: Please look for socks with a wool blend and no cotton.

Socks will be donated to those in need

through Transition Projects and Saint André Bessette.

Don't have time to go sock shopping? Or would you prefer we take your cash and purchase wool socks in bulk? Just scan the QR code at right, or drop off a donation at the Parish Office.



Sleep in Heavenly Peace Bedding drive

Through Christmas, Sleep in Heavenly Peace is accepting bedding donations at The Madeleine. Please look for the blue bins located in the church vestibule or bring your donations to the Parish Office during business hours.

Sleep in Heavenly Peace has provided 1,000 beds to children in the Portland area. Many of those beds were built and delivered



by Madeleine parishioners and provided with sheets, blankets and pillows from Madeleine bedding drives.

Bedding needs to be for twin size beds (not extra long, please) sheet sets, blankets and comforters, mattress protectors and pillows. All donations must be new and still in the original packaging. Thank you!

Bulletin submissions for Thanksgiving weekend due November 21

If you have information to submit for the November 30–December 1 bulletin, please email it to bulletin@themadeleine.edu no later than November 21. Thanks for your consideration!

Inside This Week's Bulletin:

- ▶ **New Altar Server Training**—For any youth wishing to become Altar Servers, there is an upcoming training session. See Page 3.
- ▶ **Madeleine Gardening Club**—Got a green thumb or just like to spend time working in a (very large) garden? See page 5 on how to help in The Madeleine's gardens and flower beds.
- ▶ **The Madeleine Marketplace**—Save the date of December 5 for our annual pre-Holiday bazaar and Christmas tree lighting celebration. Want to sell at the bazaar? Details page 7.
- ▶ **Youth Group Gathering**—Save the date: November 27. See Page 4 for details.

Thirty-Second Sunday in Ordinary Time

OUR READINGS TODAY FEATURE two widows who teach us about faithfulness. To have faith is not just to hold our breath and aimlessly wish for good outcomes. Rather, God calls us to a faith that is endless trust in him, knowing in our deepest heart that God loves and cares for us beyond measure.

Pray for Our Faithfully Departed

- ▶ Paul Killorin—Funeral, Nov. 30, 11 am
- ▶ Jackie Santos
- ▶ Mary Clare O'Brien
- ▶ Annie Young
- ▶ Leann Stevenson

Prayer Requests

For those who are ill, or in need of our prayers

- ▶ Danny Mitchell
- ▶ Judy Anne Yap
- ▶ Refugio Sanchez
- ▶ Christine Gregg
- ▶ Kitt & Corinne Jordan
- ▶ Jean Mitchell
- ▶ Ann & Quenton Czuba
- ▶ Charli Phipps

Mass Intentions

- 11/09, Sat Annie Young †
- 11/10, Sun, 8:00 am The Madeleine Community
- 10:00 am Paul Jaschina †
- 11/12, Tues. Jeffrey Lynn Barron †
- 11/13, Weds. Winnifred Keys †
- 11/14, Thurs Shari Heitkemper †
- 11/15, Fri Hugh McGinnis †
- 11/16, Sat Alan Morrill †
- 11/17, Sun, 8:00 am The Madeleine Community
- 10:00 am Marie Walsh †

Calendar This Week

Sunday, November 10

- 8:00 am: Mass—Church
- 10:00 am: Mass—Church  **ALSO LIVESTREAMS**
- 11:15 am: St Vincent DePaul—Old Church
- 11:15 am: OCIA Class—Fireside Rm

Monday, November 11

- ▶ Veteran's Day—No School, Parish Office Closed
- 10:00 am: The Madeleine Women's Coffee Club—St. Catherine Room
- 6:30 pm: FA Meeting—Fireside Rm

Tuesday, November 12

- ▶ Nourish Our Neighbors—Gr. 8
- 8:30 am: Mass—Church
- 9:00 am: Adoration—Church
- 11:00 am: Seminary Tea Meeting—St. Catherine Rm
- 6:30 pm: Pastoral Council—Fireside Rm
- 7:00 pm: Parents Club—Library

Wednesday, November 13

- 8:30 am: Mass—Church
- 2:40 pm: Children's Choir - Rehearsals
- 3:00 pm: Baptism Class—Fireside Rm
- 7:00 pm: Madeleine Choir Rehearsal—Church

Thursday, November 14

- 2:00 pm: Mass—Church


Friday, November 15

- ▶ School Picture Retakes
- 8:30 am: Mass—Church

Saturday, November 16

- ▶ Catholic Campaign for Human Development
- 8:00 am: Aurora Chorus Fall Retreat—Old Church
- 2:00 pm: Fergus/Lindsey Wedding—Church
- 4:00 pm: Confession—Church
- 5:00 pm: Mass—Church

Sunday, November 17

- ▶ Catholic Campaign for Human Development
- 8:00 am: Aurora Chorus Fall Retreat—Old Church
- 8:00 am: Mass—Church
- 10:00 am: Mass—Church  **ALSO LIVESTREAMS**
- 11:15 am: OCIA Class—Fireside Rm

Upcoming Events

- ▶ **The Madeleine Auction:** November 16
www.themadeleine.edu/auction
- ▶ **Madeleine Marketplace:** December 5
- ▶ **Fish Fry:** Friday, April 25
- ▶ **St. Mary Magdalene Day:** July 19

PARISH LIFE

Women's Coffee Club

Just in time! Join us for a lively conversation: Setting Boundaries – A Tool for Managing Holiday Stress facilitated by fellow parishioner, Mary Geary, on Monday, November 11th from 10:00 to 11:30 am. Meetings are upstairs in St. Catherine Room of the Old Madeleine Church. Access doors are on NE 23rd. Signs will be posted. **Due to security, doors will be unlocked only from 9:30 to 10:15 am.** Once inside, it's easy access to the elevator. As always, treats and coffee for all!

Have a question or need a ride, contact Jody McDonald 360-870-5470.

Pope Francis' Encyclical "Dilexit Nos" released

Pope Francis has released his latest encyclical, *Dilexit Nos (He Loved Us)*. To quote, "In the presence of the heart of Christ, I ask the Lord to have mercy on this suffering world. May He pour out the treasures of his love, so that our world may regain the most important and necessary thing of all: its heart." You can download the encyclical at www.bit.ly/tms-20241027

Knight of the Month and his family

Knight of the Month for
November: Ron Baier



- ▶ **Years of Knighthood:** This time around I have been a Knight for approximately 15 years.
- ▶ **Occupation:** Retired for the past 14 years.
- ▶ **Spouse:** Carol Baier. She is also retired
- ▶ **Family:** Scott Baier, 46, Pastor at St. Paul Catholic Church, St. Paul, Oregon • Chris Baier, 43, Creative Director, Comcast • Kellie Baier, Daughter-in-law • Henry 9, Grandson • Hattie 6, Granddaughter • Heidi 4, Granddaughter
- ▶ **Why I became a Knight:** The Knights give me an opportunity to practice my faith with other Catholic men. What a great feeling to belong and participate in a group of caring, genuinely good and Christian men.



Got a Green Thumb? Or interested in learning more about plants?

Join the newly forming Madeleine Garden Club!

The school and parish landscape needs our love. Join us on Wednesdays (unless it's pouring rain), after the school morning drop-off this fall to help with or learn about Fall garden maintenance, and help us plan for next year's growing season!

No commitment or experience necessary! If you can't make it on Wednesdays but want to be involved, give Julie Kupers a call and we

can help you find another time to get your hands dirty.

This is a fun way to get to be in nature AND earn volunteer hours! Snacks and drinks provided.

For more info, contact Julie Kupers 720-936-5635, or just show up on Wednesday morning between 8:15-10:30!



In today's Gospel Jesus tells us: "I want you to observe that this poor widow contributed more than all the others who donated to the treasury. They gave from their surplus wealth, but she gave from her want, all that she had to live on." Ask yourself, "Am I only giving from my surplus wealth?" and then give your gift to the Society of St. Vincent de Paul so that those who are suffering will be able to know God's love and care.

—Lisa Hawkins, (503) 309-7968

FAITH FORMATION

Baptism Preparation Classes

Preparing for your child or godchild's Baptism? Please visit our website at www.themadeleine.edu/faithformation for newly updated information about Baptism registration and classes for parents and godparents. Three to four dates for classes are offered each month at a variety of times to accommodate parishioners and their schedules.

A full list of class options through

December is available on the website.

In November we have the following classes:

▶ Wednesday, 11/13, 3:00–4:00 pm

▶ Wednesday, 11/20 7:00–8:00 pm

To register for a class, please email Lauren Craig, lcraig@themadeleine.edu or submit a registration form to the Parish Office no later than 48 hours before the class you would like to attend.

Interested in Becoming Catholic?

RCIA (Rite of Christian Initiation of Adults) is now OCIA (Order of Christian Initiation of Adults) as determined by the US Conference of Bishops. But the message is the same, ALL are welcome to join our faith community. If you know someone who might be interested in joining the Catholic Church or if you would like to

explore joining the Catholic Church, please let us know. Classes to explore Catholicism are underway. Registration forms are available at www.themadeleine.edu/faithformation or in the back of the church. For more information contact Donna Mason at ocia@themadeleine.edu

New Altar Server Training

Saturday, Nov. 23 • 11:00 am • Fireside Rm

For newly signed Altar Servers or Altar Servers who wish to enroll: There will be a 2-hour orientation beginning in the Fireside Room on Saturday, November 23, 11:00 am–1:00 pm.

Please contact Leslie Pfaff at mary.magdalenelp54@gmail.com.



Madeleine Buildings & Grounds looking for new members

Seeking professionals in the planning, design, construction industries

The Madeleine Building and Grounds, started back in 2005 is now back in session! We are looking for professionals in the planning, design and construction industry who are willing to advise our Business Manager, My Schoning, and Father B on current and future projects, operations and management of our beautiful and expansive campus, grounds and facilities.

We plan on meeting once a quarter, starting in 2025. Please consider this service if you have the skills as listed above, and are a current Madeleine parishioner and/or parent.

Please contact me if you have questions or are interested in joining—and thank you in advance!

—Erin Couch, AIA,
Building and Grounds Chairperson
erin@creativeabandon.com



You are invited to join The Madeleine Book Club!

We enjoy a wide range of books of various genres...something for everyone! We are currently reading *Chasing Hope*, by Nicholas Kristof, which we will be reviewing in mid-November. Our membership consists of readers from different backgrounds, ages, and literary persuasions. Parishioners and friends are joyfully invited to join us for interesting reads and lively discussions throughout the year. Please direct inquiries to our Ministry Coordinator Gretchen Stevenson: gypsyfrau47@yahoo.com (503-312-6834).

Weekly Mass Times

Regular Mass Times:

Tuesday, Wednesday, Friday 8:30 am

Thursday School not in session: 8:30 am

School in session: 2:00 pm

Saturday Vigil 5:00 pm

Sunday 8:00 am, 10:00 am

Penance Saturday, 4:00–4:40 pm

Adoration Tuesdays, 9:00 am–2:00 pm

Parish Office

Hours Tuesday–Friday, 9:00 am–3:00 pm

Phone: 503-281-5777 **Fax:** 503-281-0673

School Office 503-288-9197

Parish Staff

Rev. Bonaventure Rummell—Administrator
fatherbonaventure@themadeleine.edu . . . ext. 111

Msr. Timothy Murphy—In Residence

Rev. Nazario Atukunda—In Residence

Deacon Mike O'Mahoney—Permanent Deacon
deaconmike@themadeleine.edu

Tresa Rast—School Principal
trast@themadeleine.edu 503-288-9197

My Schoning—Business Manager
mhoang@themadeleine.edu ext. 114

Linda Scheurman—Bookkeeper
lscheurman@themadeleine.edu ext. 119

Maria Manzo—Director of Music
mmanzo@themadeleine.edu ext. 113

Lauren Craig—Faith Formation/Sacramental Prep
lcraig@themadeleine.edu ext. 116

Minh-Ha Nguyen—Parish Admin Assistant
mhnguyen@themadeleine.edu ext. 112

Guy Allen—Facilities Manager, Events Manager
gallen@themadeleine.edu

Gretchen Stevenson—Office
gstevenson@themadeleine.edu ext. 110

Julie Kupers—Special Events
jkupers@themadeleine.edu . . . 720-936-5635

Rich Hammons—Director of Communications
rhammons@themadeleine.edu ext. 129

Sacraments

Infant Baptism Lauren Craig, ext 116

First Reconciliation, First Eucharist—
Rose Horton . . . sac-prep@themadeleine.edu

OCIA (Formerly RCIA)—
Donna Mason, ocia@themadeleine.edu

Marriages Fr. Bonaventure, ext 111

Anointing (Emergency) 971-301-4421

Funerals—
Therese Fenzl tfenzl@themadeleine.edu

Councils & Contacts

Pastoral Council—Dan O'Brien . 503-206-2843
pastoral-council@themadeleine.edu

Finance/Admin—John Garrow . 503-803-5693

Buildings & Grounds—Erin Couch 503-281-9575

School Advisory—Tim Resch . . 503-984-4607

Facility Requests—themadeleine.edu/facilities

Maintenance Requests—My Schoning
mhoang@themadeleine.edu ext. 114

Knights of Columbus—
Dan O'Donnell 503-440-9415

Ministry Schedule
www.themadeleine.edu/minister-schedule

Bulletin submissions due 5:00 pm Tuesday
Email to bulletin@themadeleine.edu

RECYCLING PROGRAMS AT THE MADELEINE

Marked collection bins in the breezeway facing 23rd Ave.

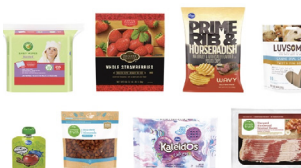
The Madeleine's Laudato Si' Circle and Care for Creation Ministry have joined with U. S. based recycler, Terracycle, to offer our parish, school, and community opportunities to responsibly recycle specific items (primarily plastics) not generally handled at curbside. Terracycle has added more manufacturers to its program, and in turn, we have expanded our recycling offerings. Here is a current listing of what we are collecting. Please keep this in mind:

- ▶ Do not include garbage or items not specifically mentioned in the descriptions.
- ▶ Empty containers of contents. No need to wash first; ensure packaging is dry.



KROGER FLEXIBLE PLASTICS

All Kroger brand flexible plastic packaging can now be accepted. Includes Private Selection and Simple Truth brands as well.



HAIR CARE APPLIANCES AND TOOLS

All types and brands of hair care tools and appliances, including hair dryers, straightening irons, curling irons, thermal brushes and mini tools.



SWIFFER REFILLS

Swiffer only brands of Sweeper™ Dry, Wet, and XL Refills, WetJet Refills™, and Duster™ Refills.



LATE JULY® SNACKS

All Late July® snack packaging as seen in these examples. Limited to Late July brand only.



GILLETTE® AND VENUS RAZORS AND RAZOR BLADES

All brands of blades and razors (systems and disposable units, and replaceable-blade cartridge units), rigid plastic packaging, and flexible plastic bag packaging.



ORAL CARE PRODUCTS

All brands of used or empty oral care products, including toothpaste tubes, tooth brushes, and dental floss containers.



FABRIC CARE PRODUCTS & PACKAGING

From Tide, Gain, Downy, NBD and Dreft, including plastic components (dispensing cup, bag, nozzle, nozzle clip), and plastic packaging wrap, flexible plastic bags, rigid plastic tubs and lids, and Tide To Go pen.



AIR CARE PRODUCTS AND PACKAGING AND MR. CLEAN DEEP CLEANING MIST

All brands of air and home cartridges, air and home care plugs, air and home care trigger heads, and air and home care plastic and film packaging. No aerosol containers. Remove as much of remaining product as possible.



USED SOCKS (ALL BRANDS)

Used clean socks only; pairs and singles are accepted. Not meant for new sock donations. No stockings, tights, or pantyhose.



REDYPER DISPOSABLE DIAPERS (Offsite subscription service)

Subscription service for purchasing and recycling Redyper brand disposable diapers through Terracycle

Details on all programs at www.themadeleine.edu/terracycle

Celebrate the 2025 Jubilee Year of Hope! The Madeleine Pilgrimage to Italy

Spiritual Director: Fr. Bonaventure Group Leaders: Maria Manzo & Michael Kissinger
Tentative dates: September 18–28, 2025

Celebrate the Catholic Church's 2025 Jubilee Year of Hope with a Madeleine Pilgrimage to Italy! Join pilgrims from all over the world in this special year of graces and prayer as we experience the rich tapestry of faith and culture that Italy has to offer. Immerse yourself in prayer and reflection in the beautiful medieval town of Assisi, birthplace of Saint Francis and Saint Claire. Travel along the Adriatic to San Giovanni Rotondo for a once-in-a-lifetime

opportunity to celebrate the Feast of St. Padre Pio at his Holy Shrine. From there, see the sights and sounds of the Eternal City—Rome—the heart of the Jubilee year Pilgrimage. Attend a Papal Audience at the Vatican and visit the holy sites and historical monuments that are the spiritual center of our faith and the foundation of Western civilization. Throw a coin in the Trevi Fountain before bidding "Arrivederci, Roma."

Optional Extension to Medjugorje and Dubrovnik

Tentative dates: September 28–October 4, 2025

We are also planning an extension for pilgrims to the village of Medjugorje, in Bosnia-Herzegovina. Since 1981, thousands of pilgrims each year have flocked to the site of the alleged ongoing apparitions of the Blessed Virgin Mary. On September 19, 2024, the Vatican granted an official

"nihil obstat" (no objection) to the spiritual experiences at Medjugorje. Travel from Medjugorje to the beautiful medieval port city of Dubrovnik, Croatia. Called the "Pearl of the Adriatic" for its immense beauty, the predominantly Catholic city of Dubrovnik is dedicated to St. Blaise, its Patron Saint.

Questions or to express interest, contact Maria Manzo, mmanzo@themadeleine.edu



Upcoming Concerts

OC = Old Madeleine Church MC = Main Church

- ▶ **November 19, 7:00 pm** OC • 45th Parallel Universe • To The Angel Who Announces the End of Time • 45thparallelpdx.org
- ▶ **November 23, 7:30 pm** OC • Cascadia Composers • Fearless Lieder • www.cascadiacomposers.org
- ▶ **December 3, 7:00 pm** OC • 45th Parallel Universe • The Portland School • 45thparallelpdx.org
- ▶ **December 8, 3:00 pm** MC • Bravo! Concerts Northwest • Handel's Messiah • bravoconcerts.com
- ▶ **December 15, 8:00 pm** OC • 45th Parallel Universe • A Cello Christmas • 45thparallelpdx.org
- ▶ **December 16, 7:00 pm** OC • 45th Parallel Universe • A Cello Christmas • 45thparallelpdx.org

FOOD!
GAMES!
FAITH SHARING!
RAFFLE & PRIZES!

**THE MADELEINE
Youth Group**

6TH-8TH GRADERS

**NEXT MEETING:
WEDNESDAY, NOVEMBER 27TH**

12:15 PM - 1:45 PM

RSVP TO
LCRAIG@THEMADELEINE.EDU BY
NOV. 22ND

NOV. 19

2024 / 2025 Season

Messiaen's iconic Quartet for the End of Time,
Germaine Tailleferre's Quartet

TICKETS: WWW.45THPARALLELPDX.ORG

**TO THE ANGEL
WHO ANNOUNCES
THE END OF TIME**

11/19

7pm

THE OLD MADELEINE CHURCH
3123 NE 24TH AVE, PORTLAND, OR, 97212

FT: MOUSAI REMIX QUARTET, JAMES SHIELDS, MONICA OHUCHI
PRODUCED BY CHARLES NOBLE & LISA LIPTON



THE MADELEINE GAMES

2024 SCHOOL AUCTION

THE MADELEINE SCHOOL PADDLE RAISE—COOL CLASSROOMS, BRIGHT FUTURES

After gathering insights from staff discussions, listening to your feedback, and, of course, getting the seal of approval from Principal Rast and Father B, we're thrilled to reveal the focus of this year's Auction Paddle Raise: a brand-new, state-of-the-art HVAC system for our school!

Imagine classrooms where every student can stay focused, comfortable, and ready to learn—whether it's the coldest winter morning or a sunny spring day. With this upgrade, we'll provide consistent temperatures throughout the building, creating the perfect learning environment no matter what's happening outside.

And it's not just about comfort. This new HVAC system will also deliver cleaner, fresher air. Fewer allergens, fewer germs, and fewer missed days mean healthier students, healthier teachers, and a healthier school community overall. Plus, a new system would be energy-efficient, helping us reduce costs and shrink our environmental footprint. It's a win for everyone—our students, our teachers, and even our planet.

This is just the first step in our commitment to creating an optimal learning environment. Your support will make all of this possible. This year's goal is to raise \$75,000 to kickstart our "Breathe Easy: Fresh Air for the Future!" campaign. By contributing, you'll help us create a space where learning can truly thrive—where minds and bodies grow in comfort and health every single day.

Join us this November in taking the first step toward making this dream a reality. Together, we'll transform our school's air and atmosphere, ensuring a brighter, fresher future for all. Let's make sure our students can breathe easy and excel! Thank you for being part of this exciting journey with us!



To "Raise your Paddle" and help us
achieve this long-term goal scan the QR
Code or visit:

<https://themadeleine.schoolauction.net/auction2024/g/hvac>



SAVE THE DATE • ALL ARE WELCOME



THE MADELEINE MARKETPLACE



Holiday Bazaar & Christmas Tree Lighting
DECEMBER 5 2:00—8:00 PM

Madeleine Marketplace Call for Vendors

Register at www.themadeleine.edu/marketplace

Our annual Madeleine Marketplace Holiday Bazaar is Thursday, December 5, 2024. The one-day Marketplace opens at 2 pm and closes at 8 pm, taking place in The Madeleine Parish Hall and Fireside Room. Hundreds of parents, kids, parishioners and community members get a kick start on their Christmas shopping, buy hostess gifts for holiday entertaining, and much more. The evening's festive atmosphere is embellished with our annual Christmas tree lighting.

Food and drink are available for purchase as well as kids crafts, gingerbread house contest, caroling and pictures with Santa.

Vendor FAQ (full information on our website):

- ▶ **Prices:** See www.themadeleine.edu/marketplace for vendor prices
- ▶ **Booth setup** for Regular and Bring-your-Own Table vendors begins at 1:00 pm on December 5
- ▶ The event ends at 8 pm.
- ▶ Table positions will be assigned.
- ▶ **Regular Vendors:** We have 8' rectangular tables & 60" round tables.
- ▶ **Bring your own table:** For an additional charge, you can bring your own custom table up to a maximum of 10' x 8'.
- ▶ The Marketplace organizers retain the right to refuse vendors if the products are not appropriate. (Please no cannabis products or any images or objects that are not child friendly.) If it is determined that your products are not appropriate for this event your table fee will be refunded.
- ▶ **Youth/Child Vendors:** We are pleased to offer Madeleine School and Parish youth/children an opportunity to sell their own student-made crafts/wares.

Questions? Contact Julie Kupers at jkupers@themadeleine.edu



Timmco
INSURANCE

Brian Timm
Susan Ames | Derek Ames

1615 NE Broadway | 503-288-8818
www.timmco.com

AUTO | HOME | BUSINESS | LIFE


JOHN M. WYNN
ATTORNEY AT LAW
McGill, Kapranos & Wynn
Parishioner



Hollywood Professional Center, 3939 NE Hancock St., Ste. 305
jmwpxd@qwestoffice.net • 503-287-7333


JOSÉ MESA AUTO WHOLESALE, LLC
"The mobile auto dealer who is always in your neighborhood."
YOUR DISCOUNT AUTO RETAILER SINCE 1992!

sales@josemesa.com 503-789-0438 www.josemesa.com
NEW • USED • BUY • SELL • LEASE • TRADE • CONSIGN • BROKER • APPRAISE



Ashley
REALTY WORKS TEAM

PARISHIONERS, NEIGHBORS, EXPERT REALTORS

TIM WALTERS 
Principal Broker

The most trusted name in Real Estate!

Committed to the NE Portland
Neighborhoods since 1991

Tutor/Coach
Helping K-5 Kids in

- Reading, Writing, & Math
- Learning Spanish
- Social Emotional Health

Yanick Mesa
503-789-2414
yanickmesa@gmail.com



THE LEARNING SUCCESS WAY
INSPIRE. LEARN. SUCCEED.



Empowering athletes to fuel their training and elevate performance

Sarah McCormick, MS, RDN
Sports Dietitian Nutritionist
Madeleine Parishioner & Mom

503-270-3310 @teensportnutrition

Wick & Karoline Ashley
karoline@ashleyrealtyworks.com
(503) 819-4851
237 NE Broadway Suite 100

RE/MAX
equity group



503-545-1880 | TimWaltersRealtor@Gmail.com | TimWaltersPc.com



Beaumont Vision: providing full-service eyecare for all ages, including comprehensive exams, glasses and contacts

Dr. John R. Lewis
Stop by to view our unique eyewear
Most insurances accepted

Beaumont Vision

4331 NE Fremont St
Ph: 503-331-3937

ADVERTISE YOUR BUSINESS HERE!

Mark McGinnis
Parishioner, Parent
Mortgage Advisor
NMLS 98586
503-348-4917
"It's about service!"



mark@theorymortgage.com

THEORY
MORTGAGE

ANNE C. STEINER
ESTATE PLANNING
ELDER LAW ATTORNEY

503.946.8361 • 1915 NE Cesar Chavez Blvd.
PARISHIONER - anne.c.steiner@gmail.com

WILLS - TRUSTS - PROBATE
GUARDIANSHIP - CONSERVATORSHIP

DDI benefits

MEDICARE QUESTIONS? WE CAN HELP!

Medicare can be complicated, but we can provide free unbiased information and help navigate the process to find just the right solution for you.



Emmett Dooney, '11
Licensed Medicare Agent
503.206.4080
medicare@ddibenefits.com

BUY OR SELL

OUR TEAM CAN HELP!



Opt.
REAL ESTATE

JEFF KERSTEN
REALTOR®
503.720.9179
jeff@theopty.com

Various sizes available.
Contact Rich Hammons
bulletin@themadeleine.edu



WILLAMETTE
FINANCIAL ADVISORS, LLC
PERSONALIZED ADVICE FROM TRUSTED ADVISORS

James M Jones
Financial Advisor, CFP®
Parishioner
Direct 503.284.9200
Office 503.7470306
jimj@wfinadv.com



T.C. O'LEARY'S
a little irish
PUB

2926 NE Alberta Street
A little taste of Ireland!
www.tcolearys.com



Parishioners Tom, Siobhan & Aine O'Leary

Retrouaille
A Christian Peer Ministry
A LIFELINE FOR HURTING MARRIAGES

Is your marriage tearing you and your family apart?

Weekends held 3 times per year in Oregon
www.helpourmarriage.com
503-704-7382

Donated by Kevin & Carol McMenamin

JOHN W. LOBO PAINTING
Custom Interior & Exterior
Creative Finishes
503-969-3337 CCB#89027
Licensed Bonded Insured



Sweetly Aimee, LLC
Custom Wedding and All-Occasion Cakes and Desserts

Aimee Holzschuh
Parishioner & Parent
503.998.7368
www.SweetlyAimee.com



Maria Fitzgerald
REAL ESTATE BROKER
WINDERMERE REALTY TRUST
503-680-9737
Madeleine Mom & Parishioner



maria fitzgerald
finding the home that fitz you...



PAUL MYERS, Ph.D., LLC
PSYCHOTHERAPY, COUNSELING & CONSULTING SERVICES

(503) 381-6685 paulmyersphdpdx@gmail.com
www.paulmyersphdpdx.com



THEORY
MORTGAGE

Beating Banks Daily

Brian DuVal
503-850-7667

NMLS 5912, NMLS 1848246

Whole house remodels

- Kitchens • Bathrooms
- Basements • Additions

In-house architecture & design

Nathalie Roloff, Parishioner

503.245.0685
roloffconstruction.com
4300 NE Fremont #130

CCB #140721
WA#ROLOFC1873KU



ROLOFF
CONSTRUCTION