



THIS WEEK AT THE MADELEINE

Furthering the Reign of God, Where All Are Welcome • October 19–20, 2024

Remembering our beloved dead

The month of November is traditionally the time in the Catholic Church when we remember those who have passed, both in the previous year and before. We will have more in the coming weeks about our table of remembrance and remembrance envelopes, but for now, please plan to save the date for our All Souls Service of Light, below.



All Souls Service of Light & Vespers

Sunday, November 3, 6:30 pm • Main Church

Our beautiful Service of Light is an opportunity to reflect and pray for deceased loved ones. Join us in the Main Church for a contemplative service of music and scripture—and a special candlelight Vespers service. Those attending are encouraged to bring a picture of their deceased for our Table of Remembrance.

Photos or Memorial Cards

Please bring photos or memorial cards of your deceased family members and friends to place on the Table of Remembrance at Masses in November. Drop them off at the Parish Office, or bring them to Mass. Please include name and phone number on each.

MASS SCHEDULE: All Saints Day, November 1—9:00 am (School Mass) and 6:30 pm
All Souls Day, November 2—9:00 am

Twenty-Ninth Sunday in Ordinary Time

IN CONTRAST TO THE PRESSURES to seek power, comfort, and fame, our Church proclaims humble service. We are called to gaze on our king, enthroned on a cross, ornamented with wounds. We are told in no uncertain terms that the only path to greatness in the kingdom of God is the path of self-giving love.

Pray for Our Faithfully Departed

- ▶ Mary Clare O'Brien—*Funeral Nov. 9, 11 am*
- ▶ Annie Young ▶ Leann Stevenson
- ▶ Paul Killorin

Prayer Requests

For those who are ill, or in need of our prayers

- ▶ Refugio Sanchez ▶ Judy Anne Yap
- ▶ Kitt & Corinne ▶ Christine Gregg
- Jordan ▶ Jean Mitchell
- ▶ Ann & Quenton Czuba ▶ Charli Phipps

Mass Intentions

- 10/19, Sat Alan Morrill
- 10/20, Sun, 8:00 am The Madeleine Community
- 10:00 am John Resch †
- 10/22, Tues Gloria Deal †
- 10/23, Weds. Winifride Schnidrig †
- 10/24, Thurs, Greta Eder †
- 10/25, Fri Donna Hendrickson †
- 10/26, Sat Robert C. Robins
- 10/27, Sun, 8:00 am The Madeleine Community
- 10:00 am Vickie Torrey †

Games!

MADELEINE YOUTH GROUP

Ice Cream Social

Prizes!

6TH-8TH GRADERS

WEDNESDAY OCTOBER 23RD

6:30PM - 8:00PM

THE MADELEINE

ST. CATHERINE ROOM

Ice Cream!

EMAIL - LCRAIG@THEMADELEINE.EDU

Calendar This Week

Sunday, October 20

- ▶ World Mission Sunday
- 8:00 am: Mass, Children's Choir—Church
- 10:00 am: Mass Knights of Columbus Recognition—Church ▶ ALSO LIVESTREAMS
- 10:00 am: Sacramental Prep-First Reconciliation—Fireside Rm
- 11:15 am: OCIA Class
- 2:00 pm: West Meets East Concert—Old Madeleine Church
- 4:00 pm: In Mulieribus Concert—Church

Monday, October 21

- 6:30 pm: FA Meeting—Fireside Rm

Tuesday, October 22

- ▶ Nourish Our Neighbors—Gr. 2
- 8:30 am: Mass—Church
- 9:00 am: Adoration—Church
- 6:30 pm: Pastoral Council—Fireside Rm

Wednesday, October 23

- ▶ Noon Dismissal—School
- 8:30 am: Mass—Church
- 6:30 pm: Madeleine Youth Group Ice Cream Social—St. Catherine Room
- 7:00 pm: Madeleine Choir Rehearsal—Church

Thursday, October 24

- ▶ No School—Conferences
- 8:30 am: Mass—Church
- 10:00 am: Liturgy Committee

Friday, October 25

- ▶ No School—Conferences
- 8:30 am: Mass—Church

Saturday, October 26

- 4:00 pm: Confession—Church
- 5:00 pm: Mass—Church
- 5:00 pm: McGinnis/Hilsenkopf Wedding—Old Madeleine Church

Sunday, October 27

- 8:00 am: Mass—Church
- 10:00 am: Mass—Church ▶ ALSO LIVESTREAMS
- 11:15 am: Laudato Si'—Zoom
- 11:15 am: OCIA Class—Fireside Rm

Upcoming Events

- ▶ **The Madeleine Auction:** November 16
www.themadeleine.edu/auction
- ▶ **Madeleine Marketplace:** December 5
- ▶ **Fish Fry:** Friday, April 25
- ▶ **St. Mary Magdalene Day:** July 19

PARISH LIFE

Celebrate the 2025 Jubilee Year of Hope! The Madeleine Pilgrimage to Italy

Spiritual Director: Fr. Bonaventure • Group Leaders: Maria Manzo & Michael Kissinger
Tentative dates: September 18–28, 2025

Celebrate the Catholic Church's 2025 Jubilee Year of Hope with a Madeleine Pilgrimage to Italy! Join pilgrims from all over the world in this special year of graces and prayer as we experience the rich tapestry of faith and culture that Italy has to offer. Immerse yourself in prayer and reflection in the beautiful medieval town of Assisi, birthplace of Saint Francis and Saint Claire. Travel along the Adriatic to San Giovanni Rotondo for a once-in-a-lifetime opportunity to celebrate the Feast of St. Padre Pio at his Holy Shrine. From there, see the sights and sounds of the Eternal City—Rome—the heart of the Jubilee year Pilgrimage. Attend a Papal Audience at the Vatican and visit the holy sites and historical monuments that are the spiritual center of our faith and the foundation of Western civilization. Throw a coin in the Trevi Fountain before bidding "Arrivederci, Roma."

Optional Extension to Medjugorje and Dubrovnik

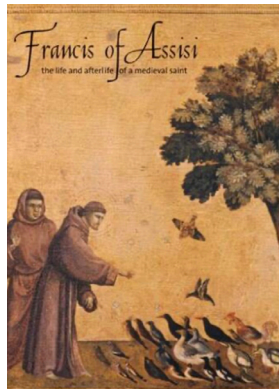
Tentative dates: September 28–October 4, 2025

We are also planning an extension for pilgrims to the village of Medjugorje, in Bosnia-Herzegovina. Since 1981, thousands of pilgrims each year have flocked to the site of the alleged ongoing apparitions of the Blessed Virgin Mary. On September 19, 2024, the Vatican granted an official "nihil obstat" (no objection) to the spiritual experiences at Medjugorje. Travel from Medjugorje to the beautiful medieval port city of Dubrovnik, Croatia. Called the "Pearl of the Adriatic" for its immense beauty, the predominantly Catholic city of Dubrovnik is dedicated to St. Blaise, its Patron Saint.

*More details, including pricing, to come later in October/November.
Questions or to express interest, contact Maria Manzo,
mmanzo@themadeleine.edu*

Book Club News! October 29: Evening with Fr. Bonaventure

Coming soon ...on Tuesday evening, October 29, Father will be leading the discussion of the book he recommended to us: *Francis of Assisi: the Life and Afterlife of a Medieval Saint*, by André Vauchez. You are cordially invited to join us for this event (and we certainly hope you will). To sign up, and/or for further information about our group, please contact our ministry coordinator Gretchen Stevenson: gypsyfrau47@yahoo.com (503-312-6834).



All Saints Day Retreat

Friday, November 1

- ▶ Our Lady of Peace Retreat—Beaverton
- ▶ Retreat Master: Archbishop John G. Vlazny
- ▶ Theme: "The Jubilee Works of Mercy: Corporal & Spiritual"
- ▶ Retreat from 9 a.m. - 2:30 p.m. Doors open at 8:15 a.m.
- ▶ \$50 per person; includes lunch
- ▶ Register online at www.olpretreat.org or phone the retreat house at 503-649-7127 3600 SW 170th Avenue, Beaverton

Solo Seniors

- ▶ Are you single and over age 55? SOLO SENIORS is a Catholic-based social organization, for single men and women over age 55 in the greater Portland area. It primarily provides social and recreational programs in a safe and friendly environment for its members. For more information or a copy of our monthly newsletter, call Donna Dubinski at 503 246-6536.



In the Gospel today Jesus tells his disciples: "Anyone among you who aspires to greatness must serve the rest; whoever wants to rank first among you must serve the needs of all." When you give furniture, household items and clothing you no longer use to the Society of St. Vincent de Paul, you give hope to your neighbors who have nothing. The new St. Vincent de Paul Thrift Store, opening in November is located at: 17108 SE Powell Blvd., Portland, Or. 97236.

—Lisa Hawkins, (503) 309-7968

Baptism Preparation Classes

Preparing for your child or godchild's Baptism? Please visit our website at www.themadeleine.edu/faithformation for newly updated information about Baptism registration and classes for parents and godparents. Three to four dates for classes are offered each month at a variety of times to accommodate parishioners and their schedules.

A full list of class options through

December is available on the website.

In November we have three classes:

- ▶ Saturday, 11/2, 2:00–3:00 pm
- ▶ Wednesday, 11/13, 3:00–4:00 pm
- ▶ Wednesday, 11/20 7:00–8:00 pm

To register for a class, please email Lauren Craig, lrcraig@themadeleine.edu or submit a registration form to the Parish Office no later than 48 hours before the class they you like to attend.

Sacramental Prep 2024-25

Registration for First Penance and First Eucharist is open for the 2024-2025 school year. Classes will be held during the 10:00 am Masses and once class is complete, children will be brought to Mass to join their families in time for the Presentation of Gifts. The schedule and registration form can be found on the parish website at www.themadeleine.edu/faith-formation. Email

Rose Horton at sac-prep@themadeleine.edu for more information.

Any children wanting to receive the sacrament of First Communion who are also in need of baptism should submit the First Communion registration form, leaving the baptism date blank for now and email lrcraig@themadeleine.edu for more information.

Confirmation Changes + Youth Group Forming

This year, faith formation for 6th-8th grade will look a little different. Confirmation will now be offered every other year to anyone seventh grade and older, starting with classes next year.

This year, The Madeleine is starting a Youth Group that will meet once a month. Our mission is to help our middle schoolers grow in their faith while building

Christ-centered friendships and community. Join us for food, faith, fellowship, and FUN!

This month, we're meeting Wednesday, October 23, 6:30 pm in, the St. Catherine Room. See page 4 for more information.

Please see The Madeleine website for sign-up information and a full schedule and email Lauren Craig at lrcraig@themadeleine.edu with any questions.

Interested in Becoming Catholic?

RCIA (Rite of Christian Initiation of Adults) is now OCIA (Order of Christian Initiation of Adults) as determined by the US Conference of Bishops. But the message is the same, ALL are welcome to join our faith community. If you know someone who might be interested in joining the Catholic Church or if you would like to

explore joining the Catholic Church, please let us know. Classes to explore Catholicism are underway. Registration forms are available at www.themadeleine.edu/faith-formation or in the back of the church. For more information contact Donna Mason at ocia@themadeleine.edu

Altar Server Recruitment—Please Join Us!

The Madeleine is looking for parish youth who are in at least 3rd grade and who have received the Sacraments of Eucharist and Reconciliation to serve with a dynamic group of Altar Servers.



welcome! It is such a great opportunity to serve Christ, especially at the Lord's table.

The Madeleine is also looking for parents who can assist throughout the year with Altar Server's special masses

and training. Please contact Leslie Pfaff or email Christi Bohmbach at The Madeleine Office for more information.

Weekly Mass Times

Regular Mass Times:

Tuesday, Wednesday, Friday 8:30 am
Thursday School not in session: 8:30 am
School in session: 2:00 pm
Saturday Vigil 5:00 pm
Sunday 8:00 am, 10:00 am

Penance Saturday, 4:00–4:40 pm

Adoration Tuesdays, 9:00 am–2:00 pm

Parish Office

Hours Tuesday–Friday, 9:00 am–3:00 pm

Phone: 503-281-5777 **Fax:** 503-281-0673

School Office 503-288-9197

Parish Staff

Rev. Bonaventure Rummell—Administrator
fatherbonaventure@themadeleine.edu ext. 111

Msgr. Timothy Murphy—In Residence

Rev. Nazario Atukunda—In Residence

Deacon Mike O'Mahoney—Permanent Deacon
deaconmike@themadeleine.edu

Tresa Rast—School Principal
trast@themadeleine.edu 503-288-9197

My Schoning—Business Manager
mhoang@themadeleine.edu ext. 114

Linda Scheurman—Bookkeeper
lscheurman@themadeleine.edu ext. 119

Maria Manzo—Director of Music
mmanzo@themadeleine.edu ext. 113

Lauren Craig—Faith Formation/Sacramental Prep
lrcraig@themadeleine.edu ext. 116

Minh-Ha Nguyen—Parish Admin Assistant
mhnguyen@themadeleine.edu ext. 112

Guy Allen—Facilities Manager, Events Manager
gallen@themadeleine.edu

Gretchen Stevenson—Office
g Stevenson@themadeleine.edu ext. 110

Julie Kupers—Special Events
jkupers@themadeleine.edu . . . 720-936-5635

Rich Hammons—Director of Communications
rhammons@themadeleine.edu ext. 129

Sacraments

Infant Baptism Lauren Craig, ext 116

First Reconciliation, First Eucharist—
Rose Horton sac-prep@themadeleine.edu

OCIA (Formerly RCIA)—
Donna Mason, ocia@themadeleine.edu

Marriages Fr. Bonaventure, ext 111

Anointing (Emergency) 971-301-4421

Funerals—
Therese Fenzl tfenzl@themadeleine.edu

Councils & Contacts

Pastoral Council—Dan O'Brien . 503-206-2843
pastoral-council@themadeleine.edu

Finance/Admin—John Garrow . 503-803-5693

Buildings & Grounds—Erin Couch 503-281-9575

School Advisory—Tim Resch . . 503-984-4607

Facility Requests—themadeleine.edu/facilities

Maintenance Requests—My Schoning
mhoang@themadeleine.edu ext. 114

Knights of Columbus—
Dan O'Donnell 503-440-9415

Ministry Schedule
www.themadeleine.edu/minister-schedule

Bulletin submissions due 5:00 pm Tuesday
Email to bulletin@themadeleine.edu

MUSIC AT THE MADELEINE

Why sing? God gave everyone the gift of song. We sing before we speak.

Music, especially song, is the most human of the arts. It needs no materials or tools other than the ear and throat – along with mind and heart. When we sing together, we create a community, a communion of sound. The group becomes more than the sum of its parts: It is creating beauty (Alice Parker from her book, “Melodious Accord”).

Did you know? Children who sing in a choir...

- Tend to get better grades or improve academically once in a choir.
- Learn developmental skills such as memorization, good homework habits, commitment, and high levels of creativity.
- Learn how to be a “team player”, social skills, and manage emotions.
- Develop self-esteem and confidence.
- Are more likely to participate in sports and other activities.
- Help children engage in their school or church.

Children who sing in their church choir...

- Are more likely to stay active in their church as a teen and adult.
- Internalize biblical principles by memorizing faith-based songs they learned as a child.
- Give much value to both children and adults in their worshipping community.

Adults who sing in a choir...

- Strengthen feelings of community and social well-being.
- Help regulate their heart beat through group singing.
- Reduce their stress levels and feelings of depression.
- Improve their lung capacity.
- Volunteer more significantly than the general public.
- Become better “team players” and leaders in their outside activities.
- Build confidence in their daily lives.

Choir opportunities at The Madeleine

The Madeleine Children’s Choir

- Open to all children, grades three – five
- Meets on Wednesdays, 2:40 - 3:20 PM in the Main Church Loft
- Sing for Parish masses, Madeleine Marketplace, Special Events & Services throughout the year.

NEW—Junior Cantor Ensemble at The Madeleine

- Open to all youth, grades six - twelve
- Meets on Thursdays, 3:15–4:00 pm or as scheduled
- Sing for Parish Masses as scheduled throughout the year
- Build “hands on” singing , confidence, and leadership skills as a Jr. Cantor & Soloist

The Madeleine Choir

- Open to all, ages 16 and beyond!
- Meets on Wednesdays, 7:00 – 9:00 PM
- Sing for 10:00 AM Parish Masses and Special Feast Days & liturgies throughout the year

The Madeleine Chime Choir

- Open to all, ages 16 and beyond
- Meets on Wednesday, 5:30-6:30 PM as scheduled
- Play for Parish Masses as scheduled
- Experience as an instrumentalist and/or reading rhythms highly encouraged

To Register or for more information, please contact

Dr. Maria Manzo, Director of Music • mmanzo@themadeleine.edu • 503-281-5777, ext. 113

Please register by Monday, September 23

themadeleine.edu/site/music-ministry-opportunities/

CDZ Collegium Musica presents

Musical Travel to Japan

Internationally acclaimed musicians Miho Yamaji (koto) from Japan and Kodo Araki Vi (shakuhachi/bamboo flute)

Sunday, Oct. 20, 2:00 pm
The Old Madeleine Church

Suggested donation \$40
www.cdzcollegiummusica.org



Support Our Seminarians: Archdiocesan Seminarian Appeal

The Holy Eucharist is the Body and Blood of our Lord Jesus Christ, the source and summit of our Catholic Faith. Our seminarians await the day they can bring the Eucharist to you and your family. As we celebrate the gift of priesthood this Priesthood Sunday, prayerfully consider supporting the Seminarian Appeal. One hundred percent of your donation will go to the formation of priests serving in western Oregon.

Visit supportourseminarians.church or call 503-233-8336.

World Mission Sunday 2024 October 20th

GO AND INVITE EVERYONE to the banquet

(MT 22:9)

YOUR GIFT HELPS SUPPORT:

 38,140
Seminarians

 8,750
Shelters and Orphanages

 12,000
Health Centers

 844,000
Catechists

 258,540
Religious sisters

TEXT "MISSIONS24" TO 44384



SHARE THE FEAST:

Give now



The Society for the Propagation of the Faith
a Pontifical Mission Society

WWW.ONEFAMILYINMISSION.ORG/WMS

SAVE THE DATE • ALL ARE WELCOME



THE MADELEINE MARKETPLACE



Holiday Bazaar & Christmas Tree Lighting
DECEMBER 5 2:00 – 8:00 PM

Madeleine Marketplace Call for Vendors

Register at www.themadeleine.edu/marketplace

Our annual Madeleine Marketplace Holiday Bazaar is Thursday, December 5, 2023. The one-day Marketplace opens at 2 pm and closes at 8 pm, taking place in The Madeleine Parish Hall and Fireside Room. Hundreds of parents, kids, parishioners and community members get a kick start on their Christmas shopping, buy hostess gifts for holiday entertaining, and much more. The evening's festive atmosphere is embellished with our annual Christmas tree lighting.

Food and drink are available for purchase as well as kids crafts, gingerbread house contest, caroling and pictures with Santa.

Vendor FAQ (full information on our website):

- ▶ **Prices:** See www.themadeleine.edu/marketplace for vendor prices
- ▶ **Booth setup** for Regular and Bring-your-Own Table vendors begins at 1:00 pm on December 5
- ▶ The event ends at 8 pm.
- ▶ Table positions will be assigned.
- ▶ **Regular Vendors:** We have 8' rectangular tables & 60" round tables.
- ▶ **Bring your own table:** For an additional charge, you can bring your own custom table up to a maximum of 10' x 8'.
- ▶ The Marketplace organizers retain the right to refuse vendors if the products are not appropriate. (Please no cannabis products or any images or objects that are not child friendly.) If it is determined that your products are not appropriate for this event your table fee will be refunded.
- ▶ **Youth/Child Vendors:** We are pleased to offer Madeleine School and Parish youth/children an opportunity to sell their own student-made crafts/wares.

Questions? Contact Julie Kupers at jkupers@themadeleine.edu



THE MADELEINE GAMES

2024 SCHOOL AUCTION >> 11/16

SUPPORT THE MADELEINE AUCTION—PURCHASE RAFFLE TICKETS ONLINE!

Buying raffle tickets has always been a great way to support our parish school's auction, which goes to the general fund to help keep Catholic education affordable for families. Now we're pleased to offer them online, so **ANYONE** can buy them (well, anyone who's in the state of Oregon, that is). So visit www.themadeleine.edu/raffle and buy your raffle tickets today!

RAFFLE PRIZES • \$10 Per Ticket

GRAND PRIZE: Option of \$4000 Cash or \$4000 Catholic School Tuition Voucher (Portland-area K-12)

SECOND PRIZE: \$500 Amazon Gift Card

THIRD PRIZE: \$250 Dick's Sporting Goods Gift Card

Need not be present to win. 4,500 tickets available. Drawing held at Avenue Portland, 631 NE Grand Avenue, Portland, OR 97232. Ticket drawn 11/16/24 at approximately 8:30pm. Cost \$10 per ticket. Winner responsible for applicable taxes. Restrictions may apply. Not redeemable for cash except as noted.

THE MADELEINE GAMES 2024 RAFFLE TICKET

Name _____
Phone _____
E-mail _____
Student Seller _____

Raffle Ticket 0000

Raffle Ticket 0000



PROCEEDS BENEFIT THE MADELEINE SCHOOL
RAFFLE PRIZES

GRAND PRIZE: Option of \$4000 Cash
or \$4000 K-12 Catholic School
Tuition Voucher (Portland-area)

SECOND PRIZE: \$500 Amazon Gift Card

THIRD PRIZE: \$250 Dick's Sporting Goods Gift
Card

Need not be present to win. 4,500 tickets available. Drawing held at Avenue Portland, 631 NE Grand Ave, Portland, OR 97232. Ticket drawn 11/16/2024 at approximately 8:30 pm. Cost \$10 per ticket. Winner responsible for applicable taxes. Restrictions may apply. Not redeemable for cash except as noted.

Buy tickets online: www.themadeleine.edu/raffle

Scan the code to be taken directly to the purchase page:





Timmco
INSURANCE

Brian Timm
Susan Ames | Derek Ames

1615 NE Broadway | 503-288-8818
www.timmco.com


AUTO | HOME | BUSINESS | LIFE

JOHN M. WYNN
ATTORNEY AT LAW
McGill, Kapranos & Wynn
Parishioner




Hollywood Professional Center, 3939 NE Hancock St., Ste. 305
jmwpxd@qwestoffice.net • 503-287-7333

JOSÉ MESA AUTO WHOLESALE, LLC
"The mobile auto dealer who is always in your neighborhood."
YOUR DISCOUNT AUTO RETAILER SINCE 1992!
sales@josemesa.com 503-789-0438 www.josemesa.com
NEW • USED • BUY • SELL • LEASE • TRADE • CONSIGN • BROKER • APPRAISE



Ashley
REALTY WORKS TEAM

PARISHIONERS, NEIGHBORS, EXPERT REALTORS

TIM WALTERS 
Principal Broker

The most trusted name in Real Estate!

Committed to the NE Portland
Neighborhoods since 1991

Tutor/Coach
Helping K-5 Kids in

- Reading, Writing, & Math
- Learning Spanish
- Social Emotional Health

Yanick Mesa
503-789-2414
yanickmesa@gmail.com



THE LEARNING SUCCESS WAY
INSPIRE. LEARN. SUCCEED.



Empowering athletes to fuel their training and elevate performance

Sarah McCormick, MS, RDN
Sports Dietitian Nutritionist
Madeleine Parishioner & Mom

503-270-3310 @teensportnutrition

Wick & Karoline Ashley
karoline@ashleyrealtyworks.com
(503) 819-4851
237 NE Broadway Suite 100

RE/MAX
equity group



503-545-1880 | TimWaltersRealtor@Gmail.com | TimWaltersPc.com



Beaumont Vision: providing full-service eyecare for all ages, including comprehensive exams, glasses and contacts

Dr. John R. Lewis
Stop by to view our unique eyewear
Most insurances accepted

Beaumont Vision

4331 NE Fremont St
Ph: 503-331-3937

ADVERTISE YOUR BUSINESS HERE!

Mark McGinnis
Parishioner, Parent
Mortgage Advisor
NMLS 98586
503-348-4917
"It's about service!"



mark@theorymortgage.com

THEORY
MORTGAGE

ANNE C. STEINER
ESTATE PLANNING
ELDER LAW ATTORNEY

503.946.8361 • 1915 NE Cesar Chavez Blvd.
PARISHIONER - anne.c.steiner@gmail.com

WILLS - TRUSTS - PROBATE
GUARDIANSHIP - CONSERVATORSHIP

DDI benefits

MEDICARE QUESTIONS? WE CAN HELP!

Medicare can be complicated, but we can provide free unbiased information and help navigate the process to find just the right solution for you.



Emmett Dooney, '11
Licensed Medicare Agent
503.206.4080
medicare@ddibenefits.com

BUY OR SELL

OUR TEAM CAN HELP!



Opt.
REAL ESTATE

JEFF KERSTEN
REALTOR®
503.720.9179
jeff@theopt.com

Various sizes available.
Contact Rich Hammons
bulletin@themadeleine.edu



WILLAMETTE
FINANCIAL ADVISORS, LLC
PERSONALIZED ADVICE FROM TRUSTED ADVISORS

James M Jones
Financial Advisor, CFP®
Parishioner
Direct 503.284.9200
Office 503.7470306
jimj@wfinadv.com



T.C. O'LEARY'S
a little irish
PUB

2926 NE Alberta Street
A little taste of Ireland!
www.tcolearys.com



Parishioners Tom, Siobhan & Aine O'Leary



Retrouvaille
A Christian Peer Ministry
A LIFELINE FOR HURTING MARRIAGES

Is your marriage tearing you and your family apart?

Weekends held 3 times per year in Oregon
www.helpourmarriage.com
503-704-7382

Donated by Kevin & Carol McMenamin

JOHN W. LOBO PAINTING
Custom Interior & Exterior
Creative Finishes
503-969-3337 CCB#89027
Licensed Bonded Insured



Sweetly Aimee, LLC
Custom Wedding and All-Occasion Cakes and Desserts

Aimee Holzschuh
Parishioner & Parent
503.998.7368
www.SweetlyAimee.com



Whole house remodels
• Kitchens • Bathrooms
• Basements • Additions
In-house architecture & design

Nathalie Roloff, Parishioner

Maria Fitzgerald
REAL ESTATE BROKER
WINDERMERE REALTY TRUST
503-680-9737
Madeleine Mom & Parishioner



maria fitzgerald
finding the home that fitz you...



PAUL MYERS, Ph.D., LLC
PSYCHOTHERAPY, COUNSELING & CONSULTING SERVICES

(503) 381-6685 paulmyersphdpdx@gmail.com
www.paulmyersphdpdx.com



THEORY
MORTGAGE

Beating Banks Daily

Brian DuVal
503-850-7667

NMLS 5912, NMLS 1848246

503.245.0685
roloffconstruction.com
4300 NE Fremont #130

CCB #140721
WA#ROLOFC1873KU



ROLOFF
CONSTRUCTION