

# THIS WEEK AT THE MADELEINE

Furthering the Reign of God, Where All Are Welcome • October 12–13, 2024

## Remembering our beloved dead

The month of November is traditionally the time in the Catholic Church when we remember those who have passed, both in the previous year and before. We will have more in the coming weeks about our table of remembrance and remembrance envelopes, but for now, please plan to save the date for our All Souls Service of Light, below.



### All Souls Service of Light & Vespers

*Sunday, November 3, 6:30 pm*

Our beautiful Service of Light is an opportunity to reflect and pray for deceased loved ones. Join us in the Main Church for a contemplative service of music and scripture—and a special candlelight Vespers service. Those attending are encouraged to bring a picture of their deceased for our Table of Remembrance.

### Photos or Memorial Cards

Please bring photos or memorial cards of your deceased family members and friends to place on the Table of Remembrance at Masses in November. Drop them off at the Parish Office, or bring them to Mass. Please include name and phone number on each.

**MASS SCHEDULE:** All Saints Day, November 1—9:00 am (School Mass) and 6:30 pm  
All Souls Day, November 2—9:00 ream

## Twenty-Eighth Sunday in Ordinary Time

JESUS IS THE WORD OF GOD, living and effective, able to discern the thoughts and reflections of our hearts. Jesus is the wisdom of God, more precious than power, riches, or beauty. To follow Christ is to place him at the center of our lives, to seek him before all the good things of this world, including ties to family, friends, and colleagues.

### Pray for Our Faithfully Departed

- ▶ Paul Killorin
- ▶ Mary Clare O'Brien
- ▶ Leann Stevenson

### Prayer Requests

For those who are ill, or in need of our prayers

- ▶ Refugio Sanchez
- ▶ Fran Johnson
- ▶ Judy Anne Yap
- ▶ Christine Gregg
- ▶ Ann & Quenton Czuba
- ▶ Jean Mitchell
- ▶ Charli Phipps
- ▶ Annie Young
- ▶ Kitt & Corinne Jordan

### Mass Intentions

- 10/12, Sat . . . . . Bill Ashley †
- 10/13, Sun, 8:00 am The Madeleine Community  
10:00 am . . . . . Jeffrey Lynn Barron †
- 10/15, Tues . . . . . Donna Hendrickson †
- 10/16, Weds . . . . . Guy Allen
- 10/17 Thurs, . . . . . Keith Edward Kern †
- 10/18, Fri. . . . . Jeanne Cecile Kizak †
- 10/19, Sat . . . . . Alan Morrill
- 10/20, Sun, 8:00 am The Madeleine Community  
10:00 am . . . . . John Resch †

## Celebrate the 2025 Jubilee Year of Hope! The Madeleine Pilgrimage to Italy

*Spiritual Director: Fr. Bonaventure • Group Leaders: Maria Manzo & Michael Kissinger*  
*Tentative dates: September 18–28, 2025*

Celebrate the Catholic Church's 2025 Jubilee Year of Hope with a Madeleine Pilgrimage to Italy! Join pilgrims from all over the world in this special year of graces and prayer as we experience the rich tapestry of faith and culture that Italy has to offer. Immerse yourself in prayer and reflection in the beautiful medieval town of Assisi, birthplace of Saint Francis and Saint Claire. Travel along the Adriatic to San Giovanni Rotondo for a once-in-a-lifetime opportunity to celebrate the Feast of St. Padre Pio at his Holy Shrine. From there, see the sights and sounds of the Eternal City—Rome—the heart of the Jubilee year Pilgrimage. Attend a Papal Audience at the Vatican and visit the holy sites and historical monuments that are the spiritual center of our faith and the foundation of Western civilization. Throw a coin in the Trevi Fountain before bidding "Arrivederci, Roma."

### Optional Extension to Medjugorje and Dubrovnik


*Tentative dates: September 28–October 4, 2025*

We are also planning an extension for pilgrims to the village of Medjugorje, in Bosnia-Herzegovina. Since 1981, thousands of pilgrims each year have flocked to the site of the alleged ongoing apparitions of the Blessed Virgin Mary. On September 19, 2024, the Vatican granted an official "nihil obstat" (no objection) to the spiritual experiences at Medjugorje. Travel from Medjugorje to the beautiful medieval port city of Dubrovnik, Croatia. Called the "Pearl of the Adriatic" for its immense beauty, the predominantly Catholic city of Dubrovnik is dedicated to St. Blaise, its Patron Saint.

*More details, including pricing, to come later in October.*  
*Questions or to express interest, contact Maria Manzo,*  
*mmanzo@themadeleine.edu*

## Calendar This Week

### Sunday, October 13

- 8:00 am: Mass—Church  
 10:00 am: Mass—Church  **ALSO LIVESTREAMS**  
 10:00 am: Sacramental Prep-First Reconciliation—  
 Fireside Rm  
 11:15 am: St Vincent DePaul Meeting—St.  
 Catherine Rm  
 11:15 am: OCIA Class—Fireside Rm

### Monday, October 14

- 10:00 am: Women's Coffee Club—St. Catherine  
 Room  
 6:30 pm: FA Meeting—Fireside Rm

### Tuesday, October 15

- Nourish Our Neighbors—Gr. 3  
 8:30 am: Mass—Church  
 9:00 am: Adoration—Church

### Wednesday, October 16

- 8:30 am: Mass—Church  
 2:40 pm: Children's Choir—Church  
 7:00 pm: Choir Rehearsal—Church

### Thursday, October 17

- 2:00 pm: Mass—Church  
 6:30 pm: SAC—Library


### Friday, October 18

- 8:30 am: Mass—Church

### Saturday, October 19

- World Mission Sunday  
 11:00 am: Baptism Class—Fireside Room  
 4:00 pm: Confession—Church  
 5:00 pm: Mass—Church  
 7:30 pm: In Mulieribus Concert—Church

### Sunday, October 20

- World Mission Sunday  
 8:00 am: Mass, Children's Choir—Church  
 10:00 am: Mass Knights of Columbus  
 Recognition—Church  **ALSO LIVESTREAMS**  
 10:00 am: Sacramental Prep-First Reconciliation—  
 Fireside Rm  
 11:15 am: OCIA Class  
 2:00 pm: West Meets East Concert—Old  
 Madeleine Church  
 4:00 pm: In Mulieribus Concert—Church

## Upcoming Events

- **The Madeleine Auction:** November 16  
[www.themadeleine.edu/auction](http://www.themadeleine.edu/auction)  
 ► **Madeleine Marketplace:** December 5  
 ► **Fish Fry:** Friday, April 25  
 ► **St. Mary Magdalene Day:** July 19

## PARISH LIFE

## Support Our Seminarians: Archdiocesan Seminarian Appeal

The Holy Eucharist is the Body and Blood of our Lord Jesus Christ, the source and summit of our Catholic Faith. Our seminarians await the day they can bring the Eucharist to you and your family. As we celebrate the gift of priesthood this Priesthood Sunday, prayerfully



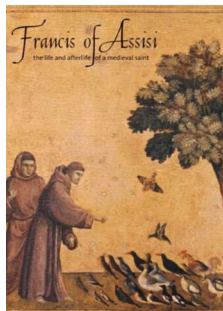
503-233-8336.

consider supporting the Seminarian Appeal. One hundred percent of your donation will go to the formation of priests serving in western Oregon.

Visit [supportourseminarians.church](http://supportourseminarians.church) or call

## Book Club News

Fr. Bonaventure recommended *Francis of Assisi: the Life and Afterlife of a Medieval Saint*, by André Vauchez, which we are currently reading. Father will be leading our discussion of this book in October, and you are cordially invited



to join us for this event. For further information about our group, please contact our ministry coordinator Gretchen Stevenson: [gypsyfrau47@yahoo.com](mailto:gypsyfrau47@yahoo.com) 503-312-6834.

## Women's Coffee Club

School has started, vacations are memories, and our gardens are beginning to rest. Pause, take a breath, and come join us Monday, October 14th from 10:00-11:30 am for friendship, coffee, and conversation along with some lovely treats. We are now meeting upstairs in The Old Madeleine Church gathering space. Access doors are on NE 23rd. It's easy access to the elevator if needed. Have a question or need a ride, call Jody McDonald 360-870-5470.

## Solo Seniors

Are you single and over age 55? SOLO SENIORS is a Catholic-based social organization, for single men and women over age 55 in the greater Portland area. It primarily provides social and recreational programs in a safe and friendly environment for its members. For more information or a copy of our monthly newsletter, call Donna Dubinski at 503 246-6536.



## Assisted Listening Devices Available

*Available in the Sacristy at Masses*

As lovely and soaring as our beloved church is, sometimes its lively acoustics can make hearing all of Mass a challenge...especially some of our presiders who are easier to hear than others. But we have a solution!

In the Sacristy, we have assisted listening devices for your use during Mass. They're very easy to use and can vastly improve the experience at Mass for those with hearing challenges. Just take a device, plug in a headphone, and adjust the volume to your comfort. We just ask you to sign the check-out list and return them at the end of Mass.

Questions? Ask any Minister of Hospitality.

## All Saints Day Retreat

*Friday, November 1*

- Our Lady of Peace Retreat—Beaverton
- Retreat Master: Archbishop John G. Vlazny
- Theme: "The Jubilee Works of Mercy: Corporal & Spiritual"
- Retreat from 9 a.m. - 2:30 p.m. Doors open at 8:15 a.m.
- \$50 per person; includes lunch
- Register online at [www.olpretreat.org](http://www.olpretreat.org) or phone the retreat house at 503-649-7127 3600 SW 170th Avenue, Beaverton



**In today's Gospel, Jesus says:** "Go, sell what you have, and give to the poor and you will have treasure in heaven; then come follow me." Have you considered answering the call to help serve the poor by joining the Society of St. Vincent de Paul?

—Lisa Hawkins, (503) 309-7968

## Baptism Preparation Classes

Preparing for your child or godchild's Baptism? Please visit our website at [www.themadeleine.edu/faithformation](http://www.themadeleine.edu/faithformation) for newly updated information about Baptism registration and classes for parents and godparents. Three to four dates for classes are offered each month at a variety of times to accommodate parishioners and their schedules.

A full list of class options through December is available on the website.

This month we one class remaining: Saturday, October 19th from 11 am-12 pm. To sign up, please email Lauren Craig, [lcraig@themadeleine.edu](mailto:lcraig@themadeleine.edu) or submit a registration form to the Parish Office no later than 48 hours before the class they would like to attend.

## Sacramental Prep 2024-25

Registration for First Penance and First Eucharist is open for the 2024-2025 school year. Classes will be held during the 10:00 am Masses and once class is complete, children will be brought to Mass to join their families in time for the Presentation of Gifts. The schedule and registration form can be found on the parish website at [www.themadeleine.edu/faith-formation](http://www.themadeleine.edu/faith-formation). Email

Rose Horton at [sac-prep@themadeleine.edu](mailto:sac-prep@themadeleine.edu) for more information.

Any children wanting to receive the sacrament of First Communion who are also in need of baptism should submit the First Communion registration form, leaving the baptism date blank for now and email [lcraig@themadeleine.edu](mailto:lcraig@themadeleine.edu) for more information.

## Confirmation Changes + Youth Group Forming

This year, faith formation for 6th-8th grade will look a little different. Confirmation will now be offered every other year to anyone seventh grade and older, starting with classes next year.

This year, The Madeleine is starting a Youth Group that will meet one Sunday a month, featuring Life Teen's Edge Night program and other faith-sharing activities. Our mission is to help our middle schoolers

grow in their faith while building Christ-centered friendships and community. Join us for food, faith, fellowship, and FUN!

This month, we're meeting Wednesday, October 23, 6:30 pm in, the St. Catherine Room. See page 4 for more information.

Please see The Madeleine website for sign-up information and a full schedule and email Lauren Craig at [lcraig@themadeleine.edu](mailto:lcraig@themadeleine.edu) with any questions.

## Interested in Becoming Catholic?

RCIA (Rite of Christian Initiation of Adults) is now OCIA (Order of Christian Initiation of Adults) as determined by the US Conference of Bishops. But the message is the same, ALL are welcome to join our faith community. If you know someone who might be interested in joining the Catholic Church or if you would like to explore joining the Catholic Church, please

let us know. Classes to explore Catholicism are underway. Registration forms are available at [www.themadeleine.edu/faith-formation](http://www.themadeleine.edu/faith-formation) or in the back of the church. For more information contact Donna Mason at [ocia@themadeleine.edu](mailto:ocia@themadeleine.edu)

## Altar Server Recruitment—Please Join Us!

The Madeleine is looking for parish youth who are in at least 3rd grade and who have received the Sacraments of Eucharist and Reconciliation to serve with a dynamic group of Altar Servers.



Whether your child attends The Madeleine School or any other school, all who meet the requirements above are

welcome! It is such a great opportunity to serve Christ, especially at the Lord's table.

The Madeleine is also looking for parents who can assist throughout the year with Altar Server's special masses and training. Please contact Leslie Pfaff or email Christi Bohmbach at The Madeleine Office for more information.

## Weekly Mass Times

### Regular Mass Times:

Tuesday, Wednesday, Friday . . . . . 8:30 am  
 Thursday . . . . . School not in session: 8:30 am  
 School in session: 2:00 pm  
 Saturday Vigil . . . . . 5:00 pm  
 Sunday . . . . . 8:00 am, 10:00 am

**Penance** . . . . . Saturday, 4:00-4:40 pm

**Adoration** . . . . . Tuesdays, 9:00 am-2:00 pm

## Parish Office

**Hours** . . . . . Tuesday-Friday, 9:00 am-3:00 pm

**Phone:** 503-281-5777 . . . . . **Fax:** 503-281-0673

**School Office** . . . . . 503-288-9197

## Parish Staff

**Rev. Bonaventure Rummell**—Administrator  
[fatherbonaventure@themadeleine.edu](mailto:fatherbonaventure@themadeleine.edu) . . . ext. 111

**Msr. Timothy Murphy**—In Residence

**Rev. Nazario Atukunda**—In Residence

**Deacon Mike O'Mahoney**—Permanent Deacon  
[deaconmike@themadeleine.edu](mailto:deaconmike@themadeleine.edu)

**Tresa Rast**—School Principal  
[trast@themadeleine.edu](mailto:trast@themadeleine.edu) . . . . . 503-288-9197

**My Schoning**—Business Manager  
[mhoang@themadeleine.edu](mailto:mhoang@themadeleine.edu) . . . . . ext. 114

**Linda Scheurman**—Bookkeeper  
[lscheurman@themadeleine.edu](mailto:lscheurman@themadeleine.edu) . . . . . ext. 119

**Maria Manzo**—Director of Music  
[mmanzo@themadeleine.edu](mailto:mmanzo@themadeleine.edu) . . . . . ext. 113

**Lauren Craig**—Faith Formation/Sacramental Prep  
[lcraig@themadeleine.edu](mailto:lcraig@themadeleine.edu) . . . . . ext. 116

**Minh-Ha Nguyen**—Parish Admin Assistant  
[mhnguyen@themadeleine.edu](mailto:mhnguyen@themadeleine.edu) . . . . . ext. 112

**Guy Allen**—Facilities Manager, Events Manager  
[gallen@themadeleine.edu](mailto:gallen@themadeleine.edu)

**Gretchen Stevenson**—Office  
[g Stevenson@themadeleine.edu](mailto:g Stevenson@themadeleine.edu) . . . . . ext. 110

**Julie Kupers**—Special Events  
[jkupers@themadeleine.edu](mailto:jkupers@themadeleine.edu) . . . . . 720-936-5635

**Rich Hammons**—Director of Communications  
[rhammons@themadeleine.edu](mailto:rhammons@themadeleine.edu) . . . . . ext. 129

## Sacraments

**Infant Baptism** . . . . . Lauren Craig, ext 116

**First Reconciliation, First Eucharist**—  
 Rose Horton . . . [sac-prep@themadeleine.edu](mailto:sac-prep@themadeleine.edu)

**OCIA** (Formerly RCIA)—  
 Donna Mason, . . . . . [ocia@themadeleine.edu](mailto:ocia@themadeleine.edu)

**Marriages** . . . . . Fr. Bonaventure, ext 111

**Anointing** (Emergency) . . . . . 971-301-4421

**Funerals**—  
 Therese Fenzl . . . . . [tfenzl@themadeleine.edu](mailto:tfenzl@themadeleine.edu)

## Councils & Contacts

**Pastoral Council**—Dan O'Brien . 503-206-2843  
[pastoral-council@themadeleine.edu](mailto:pastoral-council@themadeleine.edu)

**Finance/Admin**—John Garrow. 503-803-5693

**Buildings & Grounds**—Erin Couch 503-281-9575

**School Advisory**—Tim Resch . . . 503-984-4607

**Facility Requests**—[themadeleine.edu/facilities](http://themadeleine.edu/facilities)

**Maintenance Requests**—My Schoning  
[mhoang@themadeleine.edu](mailto:mhoang@themadeleine.edu) . . . . . ext. 114

**Knights of Columbus**—  
 Dan O'Donnell . . . . . 503-440-9415

**Ministry Schedule**  
[www.themadeleine.edu/minister-schedule](http://www.themadeleine.edu/minister-schedule)

**Bulletin submissions due 5:00 pm Tuesday**  
 Email to [bulletin@themadeleine.edu](mailto:bulletin@themadeleine.edu)

# MUSIC AT THE MADELEINE

*Why sing? God gave everyone the gift of song. We sing before we speak.*

Music, especially song, is the most human of the arts. It needs no materials or tools other than the ear and throat – along with mind and heart. When we sing together, we create a community, a communion of sound. The group becomes more than the sum of its parts: It is creating beauty (Alice Parker from her book, “Melodious Accord”).

*Did you know? Children who sing in a choir...*

- Tend to get better grades or improve academically once in a choir.
- Learn developmental skills such as memorization, good homework habits, commitment, and high levels of creativity.
- Learn how to be a “team player”, social skills, and manage emotions.
- Develop self-esteem and confidence.
- Are more likely to participate in sports and other activities.
- Help children engage in their school or church.

*Children who sing in their church choir...*

- Are more likely to stay active in their church as a teen and adult.
- Internalize biblical principles by memorizing faith-based songs they learned as a child.
- Give much value to both children and adults in their worshipping community.

*Adults who sing in a choir...*

- Strengthen feelings of community and social well-being.
- Help regulate their heart beat through group singing.
- Reduce their stress levels and feelings of depression.
- Improve their lung capacity.
- Volunteer more significantly than the general public.
- Become better “team players” and leaders in their outside activities.
- Build confidence in their daily lives.

## Choir opportunities at The Madeleine

*The Madeleine Children’s Choir*

- Open to all children, grades three – five
- Meets on Wednesdays, 2:40 - 3:20 PM in the Main Church Loft
- Sing for Parish masses, Madeleine Marketplace, Special Events & Services throughout the year.

*NEW—Junior Cantor Ensemble at The Madeleine*

- Open to all youth, grades six - twelve
- Meets on Thursdays, 3:15–4:00 pm or as scheduled
- Sing for Parish Masses as scheduled throughout the year
- Build “hands on” singing , confidence, and leadership skills as a Jr. Cantor & Soloist

*The Madeleine Choir*

- Open to all, ages 16 and beyond!
- Meets on Wednesdays, 7:00 – 9:00 PM
- Sing for 10:00 AM Parish Masses and Special Feast Days & liturgies throughout the year

*The Madeleine Chime Choir*

- Open to all, ages 16 and beyond
- Meets on Wednesday, 5:30-6:30 PM as scheduled
- Play for Parish Masses as scheduled
- Experience as an instrumentalist and/or reading rhythms highly encouraged

*To Register or for more information, please contact*

*Dr. Maria Manzo, Director of Music • [mmanzo@themadeleine.edu](mailto:mmanzo@themadeleine.edu) • 503-281-5777, ext. 113*

*Please register by Monday, September 23*

*[themadeleine.edu/site/music-ministry-opportunities/](http://themadeleine.edu/site/music-ministry-opportunities/)*

MADELEINE YOUTH GROUP

# Ice Cream Social

Prizes!

Games!

6TH-8TH GRADERS

WEDNESDAY OCTOBER 23RD

6:30PM - 8:00PM

THE MADELEINE  
ST. CATHERINE ROOM

Ice Cream!

EMAIL - LCRAIG@THEMADELEINE.EDU

## Knight of the Month and his family

- ▶ Ronald Couser (Ron)
- ▶ 20 years of Knighthood
- ▶ Retired Cleveland High School Social Studies Educator
- ▶ Wife: Evelyn Rose Couser, Retired Grant High School Business Educator
- ▶ Children: Four adult married children, one daughter, three sons, eleven grandchildren.
- ▶ I became a Knight because of their commitment to serve and support those in need. I have traveled globally to five continents and have seen the best of best and the worst of worst. I have done missionary work in Haiti and Moshi, Tanzania, hoping to make a difference. The Knights fulfill my need to be of service by reaching out to those in need in many ways and I am proud to be part of such a wonderful group of hard working men led by The Holy Spirit. "Truly God's work must be our own." —John F. Kennedy



CDZ Collegium Musica presents

## Musical Travel to Japan

Internationally acclaimed musicians Miho Yamaji (koto) from Japan and Kodo Araki Vi (shakuhachi/bamboo flute)

Sunday, Oct. 20, 2:00 pm  
The Old Madeleine Church

Suggested donation \$40

[www.cdzcollegiummusica.org](http://www.cdzcollegiummusica.org)



## 40 Days for Life

2024 Fall Campaign—

Sept. 25–Nov. 3 • 8 am–2 pm

You can make a difference! Please join over 1 million volunteers worldwide and sign up for a peaceful, prayerful presence outside of abortion facilities. Our presence can change the hearts and minds of abortion-minded women and can also be a powerful message to the community about the tragic reality of abortion. A large part of 40 Days for Life is prayer and fasting. If you are unable to be at the site, please pray.

Visit [40DaysforLife.com/Portland](http://40DaysforLife.com/Portland) or email Therese at [preciouschildrenofpdx@protonmail.com](mailto:preciouschildrenofpdx@protonmail.com). Call Sharon at 503-313-3689 to go with OLL parishioners. Location: Outside the Lilith Abortion Facility, 511 SW 10th Avenue, Portland

SAVE THE DATE • ALL ARE WELCOME



# THE MADELEINE MARKETPLACE



*Holiday Bazaar & Christmas Tree Lighting*  
DECEMBER 5 2:00 – 8:00 PM

## Madeleine Marketplace Call for Vendors

*Register at [www.themadeleine.edu/marketplace](http://www.themadeleine.edu/marketplace)*

Our annual Madeleine Marketplace Holiday Bazaar is Thursday, December 5, 2023. The one-day Marketplace opens at 2 pm and closes at 8 pm, taking place in The Madeleine Parish Hall and Fireside Room. Hundreds of parents, kids, parishioners and community members get a kick start on their Christmas shopping, buy hostess gifts for holiday entertaining, and much more. The evening's festive atmosphere is embellished with our annual Christmas tree lighting.

Food and drink are available for purchase as well as kids crafts, gingerbread house contest, caroling and pictures with Santa.

### Vendor FAQ (full information on our website):

- ▶ **Prices:** See [www.themadeleine.edu/marketplace](http://www.themadeleine.edu/marketplace) for vendor prices
- ▶ **Booth setup** for Regular and Bring-your-Own Table vendors begins at 1:00 pm on December 5
- ▶ The event ends at 8 pm.
- ▶ Table positions will be assigned.
- ▶ **Regular Vendors:** We have 8' rectangular tables & 60" round tables.
- ▶ **Bring your own table:** For an additional charge, you can bring your own custom table up to a maximum of 10' x 8'.
- ▶ The Marketplace organizers retain the right to refuse vendors if the products are not appropriate. (Please no cannabis products or any images or objects that are not child friendly.) If it is determined that your products are not appropriate for this event your table fee will be refunded.
- ▶ **Youth/Child Vendors:** We are pleased to offer Madeleine School and Parish youth/children an opportunity to sell their own student-made crafts/wares.

Questions? Contact Julie Kupers at [jkupers@themadeleine.edu](mailto:jkupers@themadeleine.edu)

# The Madeleine School Auction

## UNDERWRITING OPPORTUNITIES

Torch Underwriters  
\$1000

Medal Underwriters  
\$750

Ring Underwriters  
\$500

Anthem Underwriters  
\$250

RECOGNITION				
Verbal recognition during live auction				
Recognition on event signage				
Recognition on event website				
Recognition in auction catalog				



## YOUR HELP MAKES A DIFFERENCE!

Underwriting is an opportunity to help us cover the expenses associated with our auction. This event is a great evening of community and fundraising, there are many expenses incurred to make it happen. Some of these include venue rental, catering, software expense, and auctioneer fees. With help from our sponsors and underwriters, our goal is to have costs covered by the night of our event. If we accomplish this then all the revenue from auction night goes directly to benefit our school - our students, teachers, and staff!

We would be so grateful for your support in this way. We have a few different levels of support and different ways we can recognize your contribution to our school. Thank you for considering this important opportunity. If you have any questions, please reach out to us at [auction@themadeleine.edu](mailto:auction@themadeleine.edu).

### There are two ways to participate in underwriting:

To pay with a credit card, visit our auction site and choose your level of support.

To pay by check, mail or drop off this form and payment at: The Madeleine School, Attn: Auction, 3240 NE 23rd Ave, Portland OR 97212

Yes! I want to help The Madeleine School Auction through underwriting. I would like to contribute at this level:

**Torch \$1,000**      **Medal \$750**      **Rings \$500**      **Anthem \$250**

This is how I would like my name to appear in event recognition: \_\_\_\_\_

My email address is: \_\_\_\_\_ My phone number is: \_\_\_\_\_

My mailing address is: \_\_\_\_\_

**The Madeleine School's 2024 Auction, The Madeleine Games, is taking place at Avenue Portland on November 16, 2024.**  
**Questions regarding sponsorships? Email us at [auctionsponsor@themadeleine.edu](mailto:auctionsponsor@themadeleine.edu)**



**Timmco**  
INSURANCE

Brian Timm  
Susan Ames | Derek Ames

1615 NE Broadway | 503-288-8818  
www.timmco.com


AUTO | HOME | BUSINESS | LIFE

**JOHN M. WYNN**  
ATTORNEY AT LAW  
McGill, Kapranos & Wynn  
Parishioner




Hollywood Professional Center, 3939 NE Hancock St., Ste. 305  
jmwpxd@qwestoffice.net • 503-287-7333

**JOSÉ MESA AUTO WHOLESALE, LLC**  
"The mobile auto dealer who is always in your neighborhood."  
**YOUR DISCOUNT AUTO RETAILER SINCE 1992!**  
sales@josemesa.com 503-789-0438 www.josemesa.com  
NEW • USED • BUY • SELL • LEASE • TRADE • CONSIGN • BROKER • APPRAISE



**Ashley**  
REALTY WORKS TEAM

PARISHIONERS, NEIGHBORS, EXPERT REALTORS

**TIM WALTERS**   
Principal Broker

The most trusted name in Real Estate!

Committed to the NE Portland  
Neighborhoods since 1991

**Tutor/Coach**  
Helping K-5 Kids in

- Reading, Writing, & Math
- Learning Spanish
- Social Emotional Health

**Yanick Mesa**  
503-789-2414  
yanickmesa@gmail.com



THE LEARNING SUCCESS WAY  
INSPIRE. LEARN. SUCCEED.



Empowering athletes to fuel their training and elevate performance

**Sarah McCormick, MS, RDN**  
Sports Dietitian Nutritionist  
Madeleine Parishioner & Mom

503-270-3310 @teensportnutrition

Wick & Karoline Ashley  
karoline@ashleyrealtyworks.com  
(503) 819-4851  
237 NE Broadway Suite 100

**RE/MAX**  
equity group



503-545-1880 | TimWaltersRealtor@Gmail.com | TimWaltersPc.com



**Beaumont Vision:**  
providing full-service eyecare for all ages, including comprehensive exams, glasses and contacts

Dr. John R. Lewis  
Stop by to view our unique eyewear  
Most insurances accepted

*Beaumont Vision*

4331 NE Fremont St  
Ph: 503-331-3937

**ADVERTISE YOUR BUSINESS HERE!**

**Mark McGinnis**  
Parishioner, Parent  
Mortgage Advisor  
NMLS 98586  
503-348-4917  
"It's about service!"



mark@theorymortgage.com

**THEORY**  
MORTGAGE

**ANNE C. STEINER**  
ESTATE PLANNING  
ELDER LAW ATTORNEY

503.946.8361 • 1915 NE Cesar Chavez Blvd.  
PARISHIONER - anne.c.steiner@gmail.com

WILLS - TRUSTS - PROBATE  
GUARDIANSHIP - CONSERVATORSHIP

**DDI benefits**

**MEDICARE QUESTIONS? WE CAN HELP!**

Medicare can be complicated, but we can provide free unbiased information and help navigate the process to find just the right solution for you.



Emmett Dooney, '11  
Licensed Medicare Agent  
503.206.4080  
medicare@ddibenefits.com

**BUY OR SELL**

**OUR TEAM CAN HELP!**



**Opt.**  
REAL ESTATE

**JEFF KERSTEN**  
REALTOR®  
503.720.9179  
jeff@theopt.com

Various sizes available.  
Contact Rich Hammons  
bulletin@themadeleine.edu



**WILLAMETTE**  
FINANCIAL ADVISORS, LLC  
PERSONALIZED ADVICE FROM TRUSTED ADVISORS

**James M Jones**  
Financial Advisor, CFP®  
Parishioner  
Direct 503.284.9200  
Office 503.7470306  
jjmj@wfinadv.com



**T.C. O'LEARY'S**  
a little irish  
PUB

2926 NE Alberta Street  
A little taste of Ireland!  
www.tcolearys.com



Parishioners Tom, Siobhan & Aine O'Leary



**Retrouvaille**  
A Christian Peer Ministry  
A LIFELINE FOR HURTING MARRIAGES

Is your marriage tearing you and your family apart?

Weekends held 3 times per year in Oregon  
www.helpourmarriage.com  
503-704-7382

Donated by Kevin & Carol McMenamin

**JOHN W. LOBO PAINTING**  
Custom Interior & Exterior  
Creative Finishes  
503-969-3337 CCB#89027  
Licensed Bonded Insured



Sweetly Aimee, LLC  
Custom Wedding and All-Occasion Cakes and Desserts

Aimee Holzschuh  
Parishioner & Parent  
503.998.7368  
www.SweetlyAimee.com



Whole house remodels

- Kitchens • Bathrooms
- Basements • Additions

In-house architecture & design

Nathalie Roloff, Parishioner



**PAUL MYERS, Ph.D., LLC**  
PSYCHOTHERAPY, COUNSELING & CONSULTING SERVICES

(503) 381-6685 paulmyersphdpdx@gmail.com  
www.paulmyersphdpdx.com

**Maria Fitzgerald**  
REAL ESTATE BROKER  
WINDERMERE REALTY TRUST  
503-680-9737  
Madeleine Mom & Parishioner



**maria fitzgerald**  
finding the home that fitz you...



**THEORY**  
MORTGAGE

Beating Banks Daily

Brian DuVal  
503-850-7667

NMLS 5912, NMLS 1848246

503.245.0685  
roloffconstruction.com  
4300 NE Fremont #130

CCB #140721  
WA#ROLOFC1873KU



**ROLOFF**  
CONSTRUCTION