



THIS WEEK AT THE MADELEINE

Furthering the Reign of God, Where All Are Welcome • September 21–22, 2024

THIS WEEKEND! PLEASE JOIN US SUNDAY!



A CHRISTIAN VISION OF CREATION

Fr. Tyler Kreipke, CSC, PhD

Sept. 22, 11:15 am • The Old Madeleine Church

Descending Love and Ascending Praise in Communion

During the Season of Creation (Sept. 1 – Oct. 4) please join us for an exciting presentation by Fr. Tyler Kreipke, CSC, PhD, who teaches engineering at the University of Portland.



Fr. Kreipke will present the scriptural foundations of Christianity's understanding of the relationship between humanity, the natural world and God.

With degrees in biomedical engineering

and bioengineering, as well as theology, he brings a rigorous analysis and helpful understanding of the biblical teaching concerning our relationships with God, each other and all creation. All of us who have wondered what scripture teaches about what we should do about climate change will be greatly helped, and inspired, by Fr. Kreipke's work.

The talk is open to all with no reservations or tickets required. Please join us.

Coffee and donuts will be served

BOOK CLUB NEWS

Ever thought of joining The Madeleine Book Club? Now is the time!

We joyfully invite parishioners and friends to join our book club community. Our group consists of a good mix of readers from different backgrounds, ages, and literary persuasions and we'd love to have you among our members! We are sure the books we have selected will entertain you with interesting characters, intriguing plots, and fine writing from a variety of authors. Contact Gretchen Stevenson: gypsyfrau47@yahoo.com (503-312-6834).

WOMEN'S COFFEE CLUB

School has started, vacations are memories, and our gardens are beginning to rest. Pause, take a breath, and come join us Monday, October 14th from 10:00-11:30am for friendship, coffee, and conversation along with some lovely treats. We are now meeting upstairs in The Old Madeleine Church gathering space. Access doors are on NE 23rd. It's easy access to the elevator if needed. Have a question or need a ride, call Jody McDonald 360-870-5470.

Twenty-Fifth Sunday in Ordinary Time

JESUS' WORDS IN TODAY'S GOSPEL about being a servant to all are a reminder that the ways of the Lord are not the ways of the world. If we wish to be his disciples, we must have the courage to seek to understand God's ways and strive to love him with all our heart, and to love one another with humility and compassion.

PRAY FOR OUR FAITHFULLY DEPARTED

- ▶ George Miller
- ▶ Leann Stevenson
- ▶ Tom Johnston
- ▶ Mary Clare O'Brien

PRAYER REQUESTS

For those who are ill, or in need of our prayers

- ▶ Refugio Sanchez
- ▶ Fran Johnson
- ▶ Judy Anne Yap
- ▶ Christine Gregg
- ▶ Ann & Quenton Czuba
- ▶ Jean Mitchell
- ▶ Charli Phipps
- ▶ Annie Young
- ▶ Corinne Jordan

MASS INTENTIONS

- 09/21, Sat Alan Morrill †
- 09/22, Sun, 8:00 am The Madeleine Community
10:00 am Karmie Cavender †
- 09/24, Tues Kay Peterson †
- 09/25, Weds Barbara Remington †
- 09/26, Thurs, Tom Johnston †
- 09/27, Fri David Basaraba †
- 09/28, Sat Sylvia Manzo †
- 09/29, Sun, 8:00 am The Madeleine Community
10:00 am Michael Lavin †

Calendar This Week

SUNDAY, SEPTEMBER 22

- 8:00 am: Mass—Church
- 10:00 am: Mass—Church  **ALSO LIVESTREAMS**
- 11:15 am: Presentation by Fr. Tyler Kreipke—Old Madeleine Church
- 11:15 am: OCIA Class— Old Madeleine Church

MONDAY, SEPTEMBER 23

- 6:30 pm: FA Meeting—Fireside Rm

TUESDAY, SEPTEMBER 24

- ▶ Nourish Our Neighbors—Gr. 6
- 8:30 am: Mass—Church
- 9:00 am: Adoration—Church
- 6:00 pm: Case Training—Parish Hall

WEDNESDAY, SEPTEMBER 25

- 8:30 am: Mass—Church
- 7:00 pm: Madeleine Choir Rehearsal—Church

THURSDAY, SEPTEMBER 26

- 2:00 pm: Mass—Church

FRIDAY, SEPTEMBER 27

- 8:30 am: Mass—Church
- 10:00 am: Baptism Class
- 5:00 pm: Pacific Rose Ensemble—Old Madeleine Church

SATURDAY, SEPTEMBER 28

- ▶ Archdiocesan Seminarian Appeal
- 8:00 am: Northwest Catholic Counseling Services—Parish Hall
- 9:00 am: Madeleine Choir Retreat—Old Madeleine Church
- 4:00 pm: Confession—Church
- 5:00 pm: Mass—Church

SUNDAY, SEPTEMBER 29

- ▶ Archdiocesan Seminarian Appeal
- 8:00 am: Mass—Church
- 10:00 am: Mass—Church  **ALSO LIVESTREAMS**
- 11:15 am: Laudato Si'—Zoom
- 11:15 am: OCIA Class— Old Madeleine Church

UPCOMING EVENTS

- ▶ **A Christian Vision of Creation, Fr. Tyler Kreipke, CSC, PhD:** September 22
- ▶ **Parish Picnic/Oktoberfest:** October 6
- ▶ **The Madeleine Auction:** November 16
www.themadeleine.edu/auction
- ▶ **Madeleine Marketplace:** December 5
- ▶ **Fish Fry:** Friday, April 25
- ▶ **St. Mary Magdalene Day:** July 19

PARISH LIFE

PRAY FOR OUR SEMINARIANS: ARCHDIOCESAN SEMINARIAN APPEAL

Recognizing the value of the priesthood in your own sacramental life, please pray for our seminarians and consider a gift in support of their education and formation



through the Seminarian Appeal. To meet our seminarians and find out more about how you can help, visit supportourseminarians.church

A PRAYER FOR OUR SEMINARIANS

*Lord Jesus, as you once called the first disciples
to make them fishers of men,*

let your sweet invitation continue to resound:

Come Follow Me!

*We thank you for the gift of the seminarians
called to serve in the Archdiocese of Portland in Oregon.*

*Inspire them to imitate You, the Eternal High Priest,
in sacrificial service to Your Church.*

Grant perseverance to our seminarians.

Give them the graces they need to one day serve You faithfully as priests.

May Your light shine through them to everyone they meet.

*Mary, Mother of the Church, the model of every vocation,
help our seminarians to continue to say “yes” to the Lord
who calls us to cooperate in the divine plan of salvation.*

Amen

CARE FOR CREATION

HOW YOU CAN CARE FOR CREATION

Care for creation by simply being present to creation and the Creator. Feel the soil beneath your feet, held together by the roots of all things growing. Look up through the branches of a tree and be mesmerized by shadows and sunlight that play hide and seek between the branches. Recall how the seasons cause the leaves to change color. Let your gaze escape to the sky and try to imagine its unending depth. Be amazed by the various shapes, sizes and colors of the clouds. Feel the freedom of a bird in flight.

Care for creation by simply being present to creation and the Creator. Let your soul be refreshed by the incense of rain on thirsty ground. Be romanced by the fragrance of a rose. Satisfy your taste

buds by biting into a peach fresh from the orchard or a strawberry fresh from the field. Observe the creatures who share your space and experience delight.

Care for creation by simply being present to creation and the Creator. Let your journey through each day be enhanced by God’s people. Share...and accept, a smile from a stranger. Give attention to the child who needs your love. Listen to the friend who needs to talk. Treasure each hand that takes hold of yours, each hug that warms your heart, and each moment of laughter that gives you joy.

Care for creation by simply being present to creation and the Creator.

—Marilyn Robb



In today’s Gospel Jesus called the Twelve, and said to them, “If anyone wishes to be first, he shall be the last of all and the servant of all.” Taking a child, he placed it in their midst, and putting his arms around it, he said to them, “Whoever receives one child such as this in my name, receives me; and whoever ever receives me, receives not me but the One who sent me.” Your gift to the Society of St. Vincent de Paul will help hungry children feel the arms of Jesus around them.

—Lisa Hawkins, (503) 309-7968

FAITH FORMATION

BAPTISM PREPARATION CLASSES

Preparing for your child or godchild's Baptism? Please check The Madeleine website at www.themadeleine.edu/faith-formation for newly updated information about Baptism registration and classes for parents and godparents. Three to four dates for classes are offered each month at a variety of times to accommodate parishioners and their schedules.

A full list of class options through December is available on the website.

Please contact Lauren Craig at lcraig@themadeleine.edu with any questions.

Upcoming Baptism classes for the month of September:

▶ Saturday 9/21—11 am-12 pm

▶ Friday 9/27—10 am-11 am

SACRAMENTAL PREP 2024-25

Registration for First Penance and First Eucharist is open for the 2024-2025 school year. Classes will be held during the 10:00 am Masses and once class is complete, children will be brought to Mass to join their families in time for

the Presentation of Gifts. The schedule and registration form can be found on the parish website at www.themadeleine.edu/faith-formation. Email Rose Horton at sac-prep@themadeleine.edu for more information.

CONFIRMATION CHANGES + YOUTH GROUP FORMING

This year, faith formation for 6th-8th grade will look a little different. Confirmation will now be offered every other year to anyone seventh grade and older, starting with classes next year.

This year, The Madeleine is starting a Youth Group that will meet one Sunday a month from 6pm-7:30pm, featuring Life Teen's Edge Night program and other

faith-sharing activities. Our mission is to help our middle schoolers grow in their faith while building Christ-centered friendships and community. Join us for food, faith, fellowship, and FUN! Please see The Madeleine website for sign-up information and a full schedule and email Lauren Craig at lcraig@themadeleine.edu with any questions.

INTERESTED IN BECOMING CATHOLIC?

RCIA (Rite of Christian Initiation of Adults) is now OCIA (Order of Christian Initiation of Adults) as determined by the US Conference of Bishops. But the message is the same, ALL are welcome to join our faith community. If you know someone who might be interested in joining the Catholic Church or if you would like

to explore joining the Catholic Church, please let us know. Classes to explore Catholicism are underway. Registration forms are available at www.themadeleine.edu/faith-formation or in the back of the church. For more information contact Donna Mason at ocia@themadeleine.edu

ALTAR SERVER RECRUITMENT

The Madeleine is looking for parish youth who are in at least 3rd grade and who have received the Sacraments of Eucharist and Reconciliation to serve with a dynamic group of Altar Servers.

Whether your child attends The Madeleine School or any other school, all who meet the requirements above



are welcome! It is such a great opportunity to serve Christ, especially at the Lord's table.

The Madeleine is also looking for parents who can assist throughout the year with

Altar Server's special masses and training. Please contact Leslie Pfaff or email Christi Bohmbach at The Madeleine Office for more information.

WEEKLY MASS TIMES

Regular Mass Times:

Tuesday, Wednesday, Friday 8:30 am

Thursday School not in session: 8:30 am

School in session: 2:00 pm

Saturday Vigil 5:00 pm

Sunday 8:00 am, 10:00 am

Penance Saturday, 4:00-4:40 pm

Adoration Tuesdays, 9:00 am-2:00 pm

PARISH OFFICE

Hours Tuesday-Friday, 9:00 am-3:00 pm

Phone: 503-281-5777 **Fax:** 503-281-0673

School Office 503-288-9197

PARISH STAFF

Rev. Bonaventure Rummell—Administrator
fatherbonaventure@themadeleine.edu . . . ext. 111

Msr. Timothy Murphy—In Residence

Rev. Nazario Atukunda—In Residence

Deacon Mike O'Mahoney—Permanent Deacon
deaconmike@themadeleine.edu

Tresa Rast—School Principal
trast@themadeleine.edu 503-288-9197

My Schoning—Business Manager
mhoang@themadeleine.edu ext. 114

Linda Scheurman—Bookkeeper
lscheurman@themadeleine.edu ext. 119

Maria Manzo—Director of Music
mmanzo@themadeleine.edu ext. 113

Lauren Craig—Faith Formation/Sacramental Prep
lcraig@themadeleine.edu ext. 116

Minh-Ha Nguyen—Parish Admin Assistant
mhnguyen@themadeleine.edu ext. 110

Guy Allen—Facilities Manager, Events Manager
gallen@themadeleine.edu

Gretchen Stevenson—Office
gstevenson@themadeleine.edu ext. 112

Julie Kupers—Special Events
jkupers@themadeleine.edu 720-936-5635

Rich Hammons—Director of Communications
rhammons@themadeleine.edu ext. 129

SACRAMENTS

Infant Baptism Lauren Craig, ext 116

First Reconciliation, First Eucharist—
Rose Horton . . . sac-prep@themadeleine.edu

OCIA (Formerly RCIA)—
Donna Mason, ocia@themadeleine.edu

Marriages Fr. Bonaventure, ext 111

Anointing (Emergency) 971-301-4421

Funerals—
Therese Fenzl tfenzl@themadeleine.edu

COUNCILS & CONTACTS

Pastoral Council—Dan O'Brien . 503-206-2843
pastoral-council@themadeleine.edu

Finance/Admin—John Garrow . 503-803-5693

Buildings & Grounds—Erin Couch 503-281-9575

School Advisory—Tim Resch . . 503-984-4607

Facility Requests—themadeleine.edu/facilities

Maintenance Requests—My Schoning
mhoang@themadeleine.edu ext. 114

Knights of Columbus—
Dan O'Donnell 503-440-9415

Ministry Schedule
www.themadeleine.edu/minister-schedule

Bulletin submissions due 5:00 pm Tuesday
Email to bulletin@themadeleine.edu

KNIGHT OF THE MONTH: DAN EVANS

- ▶ Dan Evans, a Knight for 30 years.
- ▶ Occupation: Retired middle school teacher and I still teach as a sub at The Madeleine School.
- ▶ Spouse: Peggy Evans and she is a retired executive in Advertising at Fred Meyer.
- ▶ Children:
 - ▶ Mark, 55 years old; IT coordinator for northern Michigan hospitals
 - ▶ Danielle, 44 years old; old tort lawyer in Dallas, Texas
 - ▶ Kateri, 37 years old; Home health manager.
- ▶ Why I joined the Knights: I became a Knight to better serve and get to know the people in my Parish, The Madeleine.



ASSISTED LISTENING DEVICES AVAILABLE

Available in the Sacristy at Masses

As lovely and soaring as our beloved church is, sometimes its lively acoustics can make hearing all of Mass a challenge...especially some of our presiders who are easier to hear than others. But we have a solution!

In the Sacristy, we have assisted listening devices for your use during Mass. They're very easy to use and can vastly improve the experience at Mass for those with hearing challenges. Just take a device, plug in a headphone, and adjust the volume to your comfort. We just ask you to sign the check-out list and return them at the end of Mass.

Questions? Ask any Minister of Hospitality.

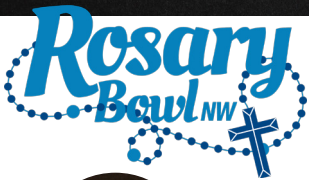
SILENT RETREAT

The O.C.D.S. Community in Portland, OR, invites you to attend a silent retreat at Our Lady of Peace Retreat House in Beaverton. This retreat is for men and women on the second weekend in October, the 11th to the 13th, 2024. The theme is Enemies of the Spiritual Life. Our retreat master is Fr. Joseph Mary Tran, O.C.D. The cost of this retreat is \$270 which includes meals and two nights at the retreat house. For information for the registration please contact Kihn Nguyen, OCDS at 503-816-5205.

SOLO SENIORS

Are you single and over age 55? SOLO SENIORS is a catholic-based social organization, for single men and women over age 55 in the greater Portland area. It primarily provides social and recreational programs in a safe and friendly environment for its members. For more information or a copy of our monthly newsletter, call Donna Dubinski at 503 246-6536.

SAVE THE DATE - Sat. Oct. 5, 2024



Attend the 18th Annual Rosary Bowl NW
9am-3pm | East Salem Community Center
1850 45th Avenue NE, Salem, OR
A Eucharistic & Marian Celebration

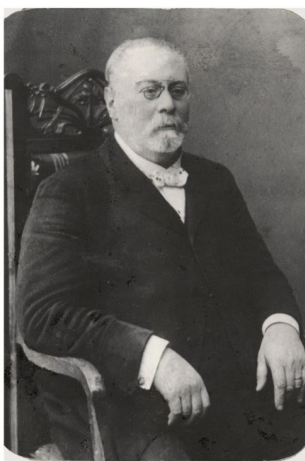


With special guests:
Auxiliary Bishop Peter Smith
Father Niall O'Riordan, OJSS
music by David Phillips



www.RosaryBowlNW.org

Zygmunt Noskowski's Piano Quartet and Karen Schulz-Harmon



Old Church

September 27th, 7:00pm.

Doors open 6:45pm

\$5 general admission

Students Free!



Presented by The Madeleine Parish & Knights of Columbus

Oktoberfest & Parish Picnic

Save the Date!

Sunday, October 6 at 11:30 am, right after Mass!

Join us for a fun twist on a great tradition.

We will be holding our annual Parish Picnic Oktoberfest Style!

- ▶ Free lunch for the family! Zenner's Oktoberfest Bier Brats or hot-dogs with all the fixin's
- ▶ For adults: \$5 German beer/wine
- ▶ For the kids: Apple cider, face painting, corn hole, kids crafts!
- ▶ For families: Cornhole games and more!
- ▶ NOTE: Feel free to bring a blanket to sit on the lawn for a true picnic experience

We need desserts & volunteers! Sign up at www.themadeleine.edu/picnic



Order today • www.themadeleine.edu/wine-sale

We have bottles of wine from our Wine Tasting you may be interested in buying. Just visit www.themadeleine.edu/wine-sale and make your purchase online (or call Minh-Ha in the Parish Office), then you'll pick up your wines at the Parish Office. Quantities limited; order today before we sell out!

▶ **Basel Cellars Chenin Blanc 2020**

This Chenin Blanc will reveal expressive notes of ripe pineapple, pear and dried apricot. Striking minerality complements the bright aroma, with beautiful herbal notes of fennel and sage lingering in the bouquet. **SALE \$15**

▶ **DeLille Cellars Chaleur Blanc Columbia Valley 2021**

67% Sauvignon Blanc and 33% Semillon. Perfectly balanced notes of fresh gooseberry, white wildflower, freshly washed linen, dried pineapple, roasted peach, nutmeg, and just a hint of smoked lemon peel. **SALE \$23**

▶ **Gilbert Cellars Allobroges GSM Yakima Valley 2019**

A blend of Grenache, Syrah, and Mourvedre. Medium-bodied and fruit-forward. Very floral with pomegranate and bright tropical fruit notes on the nose. The palate is light to medium-bodied with vibrant acidity in the mid-palate that carries thru to the finish. **SALE \$24**

▶ **Palencia Monarcha Red Columbia Valley NV**

A Cabernet Sauvignon shows notes of floral, clove and ripe cherry with firm tannins lingering on the finish. **SALE \$14**

▶ **Pursued by Bear, Bear Cub Red Blend 2019**

93% Cabernet Sauvignon, 3% Merlot, 3% Cabernet Franc, 1% Syrah. Fresh, youthful wine bursting with ripe, sun-kissed summer berries and a hint of baking spice. Richly textured, layers of dark cherry, juicy boysenberry, and roasted coffee dance across a balanced mid-palate. Lively and easy drinking. **SALE \$28**

▶ **Watermill Syrah Walla Walla Valley 2017**

Primary flavors of bright red raspberry fruit with a hint of olive tapenade, this easy drinking red shows just a hint of savory spice from the 20% Rocks District fruit in the blend. Balanced and pleasing. . . **SALE \$22**

MUSIC AT THE MADELEINE

Why sing? God gave everyone the gift of song. We sing before we speak.

Music, especially song, is the most human of the arts. It needs no materials or tools other than the ear and throat – along with mind and heart. When we sing together, we create a community, a communion of sound. The group becomes more than the sum of its parts: It is creating beauty (Alice Parker from her book, “Melodious Accord”).

Did you know? Children who sing in a choir...

- Tend to get better grades or improve academically once in a choir.
- Learn developmental skills such as memorization, good homework habits, commitment, and high levels of creativity.
- Learn how to be a “team player”, social skills, and manage emotions.
- Develop self-esteem and confidence.
- Are more likely to participate in sports and other activities.
- Help children engage in their school or church.

Children who sing in their church choir...

- Are more likely to stay active in their church as a teen and adult.
- Internalize biblical principles by memorizing faith-based songs they learned as a child.
- Give much value to both children and adults in their worshipping community.

Adults who sing in a choir...

- Strengthen feelings of community and social well-being.
- Help regulate their heart beat through group singing.
- Reduce their stress levels and feelings of depression.
- Improve their lung capacity.
- Volunteer more significantly than the general public.
- Become better “team players” and leaders in their outside activities.
- Build confidence in their daily lives.

CHOIR OPPORTUNITIES AT THE MADELEINE

The Madeleine Children’s Choir

- Open to all children, grades three – five
- Meets on Wednesdays, 2:40 - 3:20 PM in the Main Church Loft
- Sing for Parish masses, Madeleine Marketplace, Special Events & Services throughout the year.

NEW—Junior Cantor Ensemble at The Madeleine

- Open to all youth, grades six - twelve
- Meets on Thursdays, 3:15 - 4:00 pm or as scheduled
- Sing for Parish Masses as scheduled throughout the year
- Build “hands on” singing , confidence, and leadership skills as a Jr. Cantor & Soloist

The Madeleine Choir

- Open to all, ages 16 and beyond!
- Meets on Wednesdays, 7:00 – 9:00 PM
- Sing for 10:00 AM Parish Masses and Special Feast Days & liturgies throughout the year

The Madeleine Chime Choir

- Open to all, ages 16 and beyond
- Meets on Wednesday, 5:30-6:30 PM as scheduled
- Play for Parish Masses as scheduled
- Experience as an instrumentalist and/or reading rhythms highly encouraged

To Register or for more information, please contact

Dr. Maria Manzo, Director of Music • mmanzo@themadeleine.edu • 503-281-5777, ext. 113

Please register by Monday, September 23

themadeleine.edu/site/music-ministry-opportunities/

SEASON OF CARE FOR CREATION

September 1 – October 4, 2024

What can we do about climate change?

- ▶ **Make an act of penance?** (Give up meat a few days a week - Wednesday and Fridays, for example).
- ▶ **Schedule a Rite of Reconciliation.**
- ▶ **Honor the feast day of St. Francis (October 4).**
- ▶ **Enter into an Ignation Examen of (1) relation to God; (2) relation to His creation.** www.ecologicalexamen.org
- ▶ **Listen to brief personal testimonies of how faith leads to action: (~2 min.) at weekend Masses during Season of Creation by Laudato Si Movement people:**

- ▶ **Mark Brune, MS, RPE - an engineer's take on building climate improving buildings** www.pae-engineers.com/about/leadership/marc-brune
- ▶ **Dr. Darrell Miller - E.R. doctor on the climate emergency and High School Laudato Si Curricula.**
- ▶ **Dr. Joe Wujek - OB/GYN doctor and regenerative farmer on the urgent need for regenerative agriculture practices.**
- ▶ **Sr. Joan Spiering - M. Div., Good Shepherd Sister on why and how we need to ask for increased support in the federal Farm Bill for climate positive provisions.**
- ▶ **Dr. Frodo Okulam - scriptural basis for care for all of creation.**
- ▶ **William Jay Hunter, Jr. Esq. - Laudato Si**

Movement and current legal actions to effect a fair and fast transition from fossil fuel.

- ▶ **On September 22nd at 11:15 in Old Madeleine Church, attend the wonderful presentation by Fr. Kreipke, CSC, M. Div., PhD (Theology and Bioengineering, Notre Dame) on the biblical basis for fellowship and communion with God, each other and all of creation. (Coffee and donuts will be served.)**
- ▶ **Adopt a personal plan to honor God in creation, making each action an occasion of worship, e.g.**

- | | | | |
|-------------------------------------|--|---|--|
| ▶ Reuse baggies | ▶ Help with recycling at The Madeleine | ▶ Ask the Archdiocese to install solar arrays | ▶ March |
| ▶ Recycle | ▶ Help landscape The Madeleine | ▶ Read and pray through Francis, "Laudato Si" | ▶ Contribute money |
| ▶ Compost | ▶ Use just one paper towel or air dry when washing hands | ▶ Set a Google News Alert: "Climate Change" | ▶ Volunteer |
| ▶ Take the bus/tram/train | ▶ Drive less | ▶ Follow climate litigation | ▶ Study and prayerfully contact a company to urge climate action |
| ▶ Walk | ▶ Fly less | ▶ Follow climate legislation | ▶ Pray that global warming be reversed |
| ▶ Ride bikes | ▶ Install a solar array | ▶ Vote (Pro-life, including climate justice) | ▶ Hear the cry of the earth and the cry of the poor |
| ▶ Turn out lights | ▶ Ask your landlord to install a solar array | ▶ Lobby | ▶ Do everything as an act of worship |
| ▶ Print double sided | | | |
| ▶ Use beeswax paper for storage | | | |
| ▶ Reuse all plastics | | | |
| ▶ Eat organic and regenerative food | | | |
| ▶ Tend a garden | | | |



Timmco
INSURANCE

Brian Timm
Susan Ames | Derek Ames

1615 NE Broadway | 503-288-8818
www.timmco.com

AUTO | HOME | BUSINESS | LIFE

TIM WALTERS

Principal Broker



The most trusted name in Real Estate!

Committed to the NE Portland

Neighborhoods since 1991



503-545-1880 | TimWaltersRealtor@gmail.com | TimWaltersPc.com

ANNE C. STEINER
ESTATE PLANNING
ELDER LAW ATTORNEY

503.946.8361 • 1915 NE Cesar Chavez Blvd.
PARISHIONER - anne.c.steiner@gmail.com

WILLS - TRUSTS - PROBATE
GUARDIANSHIP - CONSERVATORSHIP

DDI benefits

**MEDICARE QUESTIONS?
WE CAN HELP!**

Medicare can be complicated,
but we can provide free unbiased
information and help navigate
the process to find just the right
solution for you.

Emmett Dooney, '11
Licensed Medicare Agent

503.206.4080

medicare@ddibenefits.com



T.C. O'LEARY'S

a little irish

PUB

2926 NE Alberta Street

A little taste of Ireland!

www.tcolearys.com



Parishioners Tom, Siobhan
& Aine O'Leary

JOHN M. WYNN

ATTORNEY AT LAW

McGill, Kapranos & Wynn
Parishioner

Hollywood Professional Center, 3939 NE Hancock St., Ste. 305
jmwpxd@qwestoffice.net • 503-287-7333



JOSÉ MESA AUTO WHOLESALE, LLC

"The mobile auto dealer who is always in your neighborhood."

YOUR DISCOUNT AUTO RETAILER SINCE 1992!

sales@josemesa.com 503-789-0438 www.josemesa.com

NEW • USED • BUY • SELL • LEASE • TRADE • CONSIGN • BROKER • APPRAISE

Tutor/Coach

Helping K-5 Kids in

- Reading, Writing, & Math
- Learning Spanish
- Social Emotional Health

Yanick Mesa

503-789-2414

yanickmesa@gmail.com



THE LEARNING SUCCESS WAY
INSPIRE. LEARN. SUCCEED.



Dr. John R. Lewis

Beaumont Vision:
providing full-
service eyecare
for all ages,
including com-
prehensive
exams, glasses
and contacts

Stop by to view our unique
eyewear

Beaumont Vision

Most insurances accepted

4331 NE Fremont St

Ph: 503-331-3937

**ADVERTISE
YOUR
BUSINESS
HERE!**

Various sizes available.
Contact Rich Hammons

bulletin@themadeleine.edu

BUY OR SELL



**OUR TEAM
CAN HELP!**

Opt.
REAL ESTATE

JEFF KERSTEN
REALTOR®

503.720.9179
jeff@theopt.com

Retrouvaille

A Christian Peer Ministry
A LIFELINE FOR
HURTING MARRIAGES

Is your marriage tearing
you and your family apart?

Weekends held 3 times per year in Oregon

www.helpourmarriage.com

503-704-7382

Donated by Kevin & Carol McMenamin

Maria Fitzgerald

REAL ESTATE BROKER
WINDERMERE REALTY TRUST

503-680-9737

Madeleine Mom & Parishioner



**maria
fitzgerald**
finding the home that fitz you...

**JOHN W. LOBO
PAINTING**

Custom Interior & Exterior
Creative Finishes
503-969-3337 CCB#89027
Licensed Bonded Insured



Sweetly Aimee, LLC
Custom Wedding and All-
Occasion Cakes and Desserts

Aimee Holzschuh
Parishioner & Parent
503.998.7368

www.SweetlyAimee.com



PAUL MYERS, Ph.D., LLC

PSYCHOTHERAPY, COUNSELING
& CONSULTING SERVICES

(503) 381-6685 paulmyersphdpdx@gmail.com
www.paulmyersphdpdx.com

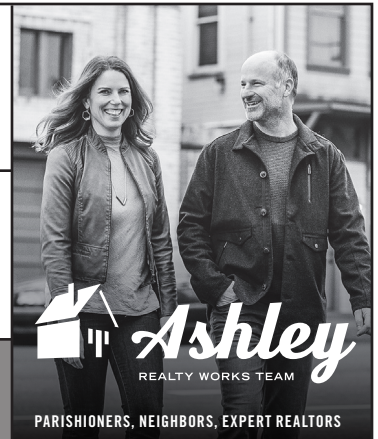


**THEORY
MORTGAGE**

Beating Banks Daily

Brian DuVal
503-850-7667

NMLS 5912, NMLS 1848246



PARISHIONERS, NEIGHBORS, EXPERT REALTORS

Wick & Karoline Ashley
karoline@ashleyrealtyworks.com
(503) 819-4851
237 NE Broadway Suite 100

RE/MAX
equity group

Mark McGinnis

Parishioner, Parent
Mortgage Advisor

NMLS 98586

503-348-4917

"It's about service!"



mark@theorymortgage.com

**THEORY
MORTGAGE**

**WILLAMETTE
FINANCIAL ADVISORS, LLC**
PERSONALIZED ADVICE FROM TRUSTED ADVISORS

James M Jones

Financial Advisor, CFP®

Parishioner

Direct 503.284.9200

Office 503.7470306

jimj@wfinadv.com



Whole house remodels

• Kitchens • Bathrooms

• Basements • Additions

In-house architecture & design

Nathalie Roloff, Parishioner

503.245.0685
roloffconstruction.com

4300 NE Fremont #130

CCB #140721
WA#ROLOFC1873KU



Bulletin Advertising: Contact Rich Hammons • bulletin@themadeleine.edu • 503-281-5777