



THIS WEEK AT THE MADELEINE

Furthering the Reign of God, Where All Are Welcome • August 24–25, 2024



Annual Wine Tasting Celebration • September 7

Tickets on sale now • www.themadeleine.edu/wine

Mark your calendar for September 7, when we'll be Walla Walla Wandering from the comfort of The Madeleine Courtyard!

Our annual wine tasting celebration will feature:

- ▶ Tasting of six fabulous wines from the Walla Walla region.
- ▶ Paired with the wines will be delicious complementary cuisine.
- ▶ Live music by Rose City Youth Ensemble.
- ▶ A Wall of Wine will be available at the event.
- ▶ Childcare available; \$10/child. Pre-registration required.

Tickets are available now! Visit www.themadeleine.edu/wine to sign up online.

Donations and volunteers welcome!

- ▶ Do you have any wines you'd like to donate for our Wall of Wine? Minimum value \$25, please.
- ▶ Would you be willing to volunteer to work the event?

If your answer is "yes," contact Julie Kupers, jkupers@themadeleine.edu

NOTE: If you purchased and retained a ticket for the 2023 event, please check your email for your options.



WALL OF WINE DONATIONS NEEDED

Our annual wine tasting celebration, *The Madeleine Uncorked! Walla Walla Wandering*, is just a few weeks away. One of the favorite events within the event is our Wall of Wine, where you pay \$25 and receive a bottle of wine valued between \$25 and \$200.

For that, we need bottles of wine! So, whether you're attending the event or not

(of course we hope you are! See Page 4 for details), we are seeking donations to stock this fundraiser.

Please bring your bottle(s) to the Parish Office during business hours, or contact Julie Kupers, jkupers@themadeleine.edu, to arrange a drop-off.

Thank you!

Twenty-First Sunday in Ordinary Time

IT CAN BE CHALLENGING to be people of faith. Accepting and understanding the magnitude of the Lord's love for us, including the mystery of Jesus handing himself over for us, may be difficult at times. But faith is a gift, so although we may struggle, we can trust God to grant us the grace we need to commit to serving him and following his son.

PRAY FOR OUR FAITHFULLY DEPARTED

- ▶ Leann Stevenson
- ▶ Mary Clare O'Brien
- ▶ Tom Johnston

PRAYER REQUESTS

For those who are ill, or in need of our prayers

- ▶ Judy Anne Yap
- ▶ Charli Phipps
- ▶ Christine Gregg
- ▶ John Hunter
- ▶ Ann & Quenton Czuba
- ▶ Annie Young
- ▶ Jean Mitchell
- ▶ Corinne Jordan

MASS INTENTIONS

- 08/24, Sat Larry Mason †
- 08/25, Sun, 8:00 am The Madeleine Community
- 10:00 am Bruce Dufour †
- 08/27, Tues Margaret Sullivan †
- 08/28, Weds Brad Pfaff †
- 08/29, Thurs, David Basaraba †
- 08/30, Fri Jeffrey Lynn Barron †
- 08/31, Sat John Resch †
- 09/01, Sun, 8:00 am The Madeleine Community
- 10:00 am Joy Allan †

**Parish Office closed
 Monday, September 2
 in celebration of
 Labor Day**

Calendar This Week

SUNDAY, AUGUST 25

8:00 am: Mass—Church

10:00 am: Mass—Church  **ALSO LIVESTREAMS**

MONDAY, AUGUST 26

6:30 pm: FA Meeting—Fireside Rm

TUESDAY, AUGUST 27

8:30 am: Mass—Church

9:00 am: Adoration—Church

WEDNESDAY, AUGUST 28

8:30 am: Mass—Church

THURSDAY, AUGUST 29

8:30 am: Mass—Church

FRIDAY, AUGUST 30

8:30 am: Mass—Church

SATURDAY, AUGUST 31

4:00 pm: Confession—Church

5:00 pm: Mass—Church

SUNDAY, SEPTEMBER 1

8:00 am: Mass—Church

10:00 am: Mass—Church  **ALSO LIVESTREAMS**

UPCOMING EVENTS

- ▶ **Wine Tasting:** September 7
www.themadeleine.edu/wine
- ▶ **A Christian Vision of Creation, Fr. Tyler Kreipke, CSC, PhD:** September 22
- ▶ **Parish Picnic/Oktoberfest:** October 6
- ▶ **The Madeleixne Auction:** November 16
www.themadeleine.edu/auction
- ▶ **Madeleine Marketplace:** December 5

PARISH LIFE

OCIA: THE NAME HAS CHANGED, BUT WELCOME IS THE SAME

RCIA (Rite of Christian Initiation of Adults) is now OCIA (Order of Christian Initiation of Adults) as determined by the US Conference of Bishops. But the message is the same, ALL are welcome to join our faith community. If you know someone who might be interested in joining the Catholic Church or if you would like to

explore joining the Catholic Church, please let us know. Classes to explore Catholicism will begin in mid-September. Registration forms are available at www.themadeleine.edu/faith-formation or in the back of the church. For more information contact Donna Mason at ocia@themadeleine.edu

SACRAMENTAL PREP REGISTRATION IS OPEN FOR 2024-25

Registration for First Penance and First Eucharist is open for the 2024-2025 school year. Classes will be held during the 10:00 am Masses and once class is complete, children will be brought to Mass to join their families in time for the Presentation

of Gifts. The schedule and registration form can be found on the parish website at www.themadeleine.edu/faith-formation. Email Rose Horton at sac-prep@themadeleine.edu for more information.

BOOK CLUB NEWS

Summer is the perfect time to read a good book!



Would you enjoy opportunities to meet with others to share in genial discussion/debate over the contents of some very excellent books?

If so, you are most cordially invited to join our group! To find out what is on our agenda for the coming season and/or to be added to our email list, please contact our MBC coordinator: Gretchen Stevenson, gypsyfrau47@yahoo.com or 503-312-6834.

WORLDWIDE MARRIAGE ENCOUNTER

“You have the words of eternal life.” Learn God’s plan for your marriage on an upcoming Worldwide Marriage Encounter Experience on September 13-15, 2024 in Beaverton, Oregon. To apply for your WWME Experience or search other dates go to rediscoverthespark.org. For information about WWME call 503-704-0836 or by email at reservations@rediscoverthespark.org

School News



In addition to excellence in all core subjects, including specialist teachers for **Science**

and **Technology**, we offer:

art • music • p.e.

learning support • onsite counselor

Space available in Pre-K, Kindergarten, 1st, 3rd, & 4th grades.

Schedule a tour now!

503-288-9197

admissions@themadeleine.edu

“Without hope, we would be mere administrators balancing the present, but not prophets and builders of the future.”

—Pope Francis via X (Twitter)
@pontifex



In today’s Gospel, Jesus asks “Do you also want to leave?” We must ask ourselves if we really want to hear the good news of his love for us and for others. Is the word of God able to break into our consciousness, change us and call us to hear the cries of the poor? As you give your gift to the poor through the Society of St. Vincent de Paul, in your heart you also will find the good news of God’s love.

—Lisa Hawkins, (503) 309-7968

ADVERTISE IN THE PARISH BULLETIN

It's one of the best kept secrets and biggest bargains in the area...Madeleine Parish Bulletin Advertising. The back page of your weekly bulletin is a great place to get the word out to our parish community of your goods or services. We have a few spaces available.

- ▶ **Affordable**—Starting at just \$73 for the 4 months September through December (\$220 per full year). We usually bill 12 months January to December, but will gladly accept your ad May through December this year.
- ▶ **Versatile**—Many sizes available...based on our “single” size module, you can stack it two or three high, stretch it two or three wide...or more if space allows... whatever size you need to get your brand’s message across to our readers.
- ▶ **Relatable**—Members of The Madeleine community tend to be very loyal to their fellow parishioners. By advertising in the bulletin, you’re demonstrating that you’re an integral part of our parish community.
- ▶ **Good Company**—On the back of our bulletin are some of the stalwart companies in our parish and community. Several familiar names have been with us for decades...isn't it time you joined them?
Contact Rich Hammons, Director of Communications, at bulletin@themadeleine.edu

Single: 1 7/8" x 7/8"
\$73 for remainder of 2024
Full Year: \$220
Averages \$4.92 per week

Double Stretch: 3 3/4" x 7/8"
\$125 for remainder of 2024 • Full Year: \$375
Averages \$7.21 per week

Double Tall: 1 7/8" x 1 3/4"
\$125 for remainder of 2024
Full Year: \$375
Averages \$7.21 per week

ASSISTED LISTENING DEVICES AVAILABLE

Available in the Sacristy at Masses

As lovely and soaring as our beloved church is, sometimes its lively acoustics can make hearing all of Mass a challenge...especially since some of our presiders who are easier to hear than others. But we have a solution!

In the Sacristy, we have assisted listening devices for your use during Mass. They're very easy to use and can vastly improve the experience at Mass for those with hearing challenges. Just take a device, plug in a headphone, and adjust the volume to your comfort. We just ask you to sign the check-out list and return them at the end of Mass.

Questions? Ask any Minister of Hospitality.



SAVE THE DATE - Sat. Oct. 5, 2024



Attend the 18th Annual Rosary Bowl NW
 9am-3pm | East Salem Community Center
 1850 45th Avenue NE, Salem, OR
 A Eucharistic & Marian Celebration



With special guests:
 Auxiliary Bishop Peter Smith
 Father Niall O’Riordan, OJSS
 music by David Phillips



www.RosaryBowlNW.org

WEEKLY MASS TIMES

Regular Mass Times:

Tuesday, Wednesday, Friday 8:30 am
 Thursday. School not in session: 8:30 am
 School in session: 2:00 pm

Note new times for weekday Masses!

Saturday Vigil 5:00 pm
 Sunday 8:00 am, 10:00 am

Penance Saturday, 4:00–4:40 pm
 Adoration Tuesdays, 9:00 am–2:00 pm

PARISH OFFICE

Hours Tuesday–Friday, 9:00 am–3:00 pm
 Parish Office is closed on Mondays
 Phone: 503-281-5777 Fax: 503-281-0673
 School Office. 503-288-9197

PARISH STAFF

- Rev. Bonaventure Rummell**—Administrator
fatherbonaventure@themadeleine.edu . . . ext. 111
- Msgr. Timothy Murphy**—In Residence
- Rev. Nazario Atukunda**—In Residence
- Deacon Mike O’Mahoney**—Permanent Deacon
deaconmike@themadeleine.edu
- Tresa Rast**—School Principal
trast@themadeleine.edu 503-288-9197
- My Schoning**—Business Manager
mhoang@themadeleine.edu ext. 118
- Linda Scheurman**—Bookkeeper
lscheurman@themadeleine.edu ext. 119
- Maria Manzo**—Director of Music
mmanzo@themadeleine.edu ext. 113
- Lauren Craig**—Faith Formation/Sacramental Prep
lcraig@themadeleine.edu ext. 116
- Minh-Ha Nguyen**—Parish Admin Assistant
mhnguyen@themadeleine.edu ext. 110
- Guy Allen**—Facilities Manager, Events Manager
gallen@themadeleine.edu
- Gretchen Stevenson**—Office
gstevenson@themadeleine.edu ext. 112
- Julie Kupers**—Special Events
jkupers@themadeleine.edu . . . 720-936-5635
- Rich Hammons**—Director of Communications
rhammons@themadeleine.edu ext. 129

SACRAMENTS

- Infant Baptism, Marriages, Anointing of the Sick**—
 Fr. Bonaventure Rummell. ext. 111
- First Reconciliation, First Eucharist**—
 Rose Horton . . . sac-prep@themadeleine.edu
- OCIA** (Formerly RCIA)—
 Donna Mason, ocia@themadeleine.edu
- Funerals**—
 Therese Fenzl tfenzl@themadeleine.edu

COUNCILS & CONTACTS

- Pastoral Council**—Dan O’Brien . 503-206-2843
pastoral-council@themadeleine.edu
- Finance/Admin**—John Garrow . . 503-803-5693
- Buildings & Grounds**—Erin Couch 503-281-9575
- School Advisory**—Tim Resch . . . 503-984-4607
- Facility Requests**—themadeleine.edu/facilities
- Maintenance Requests**—My Schoning
mhoang@themadeleine.edu ext. 114
- Knights of Columbus**—
 Dan O’Donnell 503-440-9415
- Ministry Schedule**
www.themadeleine.edu/minister-schedule

RECYCLING PROGRAMS AT THE MADELEINE

Marked collection bins in the breezeway facing 23rd Ave.

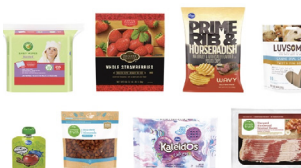
The Madeleine's Laudato Si' Circle and Care for Creation Ministry have joined with U. S. based recycler, Terracycle, to offer our parish, school, and community opportunities to responsibly recycle specific items (primarily plastics) not generally handled at curbside. Terracycle has added more manufacturers to its program, and in turn, we have expanded our recycling offerings. Here is a current listing of what we are collecting. Please keep this in mind:

- ▶ Do not include garbage or items not specifically mentioned in the descriptions.
- ▶ Empty containers of contents. No need to wash first; ensure packaging is dry.



KROGER FLEXIBLE PLASTICS

All Kroger brand flexible plastic packaging can now be accepted. Includes Private Selection and Simple Truth brands as well.



HAIR CARE APPLIANCES AND TOOLS

All types and brands of hair care tools and appliances, including hair dryers, straightening irons, curling irons, thermal brushes and mini tools.



SWIFFER REFILLS

Swiffer only brands of Sweeper™ Dry, Wet, and XL Refills, WetJet Refills™, and Duster™ Refills.



LATE JULY® SNACKS

All Late July® snack packaging as seen in these examples. Limited to Late July brand only.



GILLETTE® AND VENUS RAZORS AND RAZOR BLADES

All brands of blades and razors (systems and disposable units, and replaceable-blade cartridge units), rigid plastic packaging, and flexible plastic bag packaging.



ORAL CARE PRODUCTS

All brands of used or empty oral care products, including toothpaste tubes, tooth brushes, and dental floss containers.



FABRIC CARE PRODUCTS & PACKAGING

From Tide, Gain, Downy, NBD and Dreft, including plastic components (dispensing cup, bag, nozzle, nozzle clip), and plastic packaging wrap, flexible plastic bags, rigid plastic tubs and lids, and Tide To Go pen.



CIGARETTE BUTTS, SANTA FE NATURAL TOBACCO COMPANY

All brands of fully extinguished cigarettes (and ashes) and tobacco products, including filters, plastic packaging, inner foil packaging, rolling paper, and loose tobacco pouches.



AIR CARE PRODUCTS AND PACKAGING AND MR. CLEAN DEEP CLEANING MIST

All brands of air and home cartridges, air and home care plugs, air and home care trigger heads, and air and home care plastic and film packaging. No aerosol containers. Remove as much of remaining product as possible.



USED SOCKS (ALL BRANDS)

Used clean socks only; pairs and singles are accepted. Not meant for new sock donations. No stockings, tights, or pantyhose.



REDYPER DISPOSABLE DIAPERS (Offsite subscription service)

Subscription service for purchasing and recycling Redyper brand disposable diapers through Terracycle

Details on all programs at www.themadeleine.edu/terracycle



Celebrating & Adoring Christ in the SACRAMENT OF THE EUCHARIST

A four-part series led by Sr. Gertrude Feick, OCSO, Abbot Jeremy Driscoll, OSB, Abbot Peter Eberle, OSB, and Br. Anselm Flores, OSB.

The Christian in the World's fall series is dedicated to deepening awareness and appreciation of Christ's saving presence in the Eucharist as it is celebrated at the altar and as he is adored in the tabernacle.

FALL 2024 DATES

September 14 . . . *Cardinal Hume on the Eucharist: Did not our hearts burn within us as we listened to him speaking?*
Led by Sr. Gertrude Feick, OCSO

October 19 *Understanding What Happens at Mass*
Led by Abbot Jeremy Driscoll, OSB

November 9 *Exploring the Real Presence*
Led by Abbot Peter Eberle, OSB

December 14 *Eucharistic Transformation: Desire, Liturgy, and Purification.*
Led by Br. Anselm Flores, OSB

9:15 – 11:45 am in the Mount Angel Abbey library auditorium

COST

\$50 for the series (four Saturdays) or \$15 per session.
Student cost is \$20 for the series or \$5 per session.

INFORMATION & REGISTRATION

Register and learn more online at mountangelabbey.org/citw.

Payment can also be made by check at the door or mailed to:

Christian in the World, 1 Abbey Drive, Saint Benedict, OR 97373



Christian in the World: Spirituality and Theology for the Laity offers an integrated program of study, prayer, and discussion for Christians who want to live their faith more deeply. The program seeks to help participants gain a more profound understanding of scripture and the Church and to support them in exploring how to live out their baptismal vocation in everyday life.

A series of lectures are offered yearly in the fall and winter/spring. Participants may attend all the lectures in a series or just those pertaining to their interests or needs.



MOUNT ANGEL
A B B E Y



1 ABBEY DRIVE
SAINT BENEDICT, OR 97373

MOUNTANGELABBEY.ORG/CITW

A CHRISTIAN VISION OF CREATION

Fr. Tyler Kreipke, CSC, PhD

Sept. 22, 11:15 am • The Old Madeleine Church

Descending Love and Ascending Praise in Communion

During the Season of Creation (Sept. 1 – Oct. 4) please join us for an exciting presentation by Fr. Tyler Kreipke, CSC, PhD, who teaches engineering at the University of Portland.

Fr. Kreipke will present the scriptural foundations of Christianity's understanding of the relationship between humanity, the natural world and God.

With degrees in biomedical engineering and bioengineering, as well as theology,



he brings a rigorous analysis and helpful understanding of the biblical teaching concerning our relationships with God, each other and all creation. All of us who have wondered what scripture teaches about what we should do about climate change will be greatly

helped, and inspired, by Fr. Kreipke's work.

The talk is open to all with no reservations or tickets required. Please join us.

Coffee and donuts will be served

SEASON OF CARE FOR CREATION

September 1 – October 4, 2024

What can we do about climate change?

- ▶ **Make an act of penance?** (Give up meat a few days a week - Wednesday and Fridays, for example).
- ▶ **Schedule a Rite of Reconciliation.**
- ▶ **Honor the feast day of St. Francis (October 4).**
- ▶ **Enter into an Ignation Examen of (1) relation to God; (2) relation to His creation.** www.ecologicalexamen.org
- ▶ **Listen to brief personal testimonies of how faith leads to action: (~2 min.) at weekend Masses during Season of Creation by Laudato Si Movement people:**

- ▶ **Mark Brune, MS, RPE - an engineer's take on building climate improving buildings** www.pae-engineers.com/about/leadership/marc-brune
- ▶ **Dr. Darrell Miller - E.R. doctor on the climate emergency and High School Laudato Si Curricula.**
- ▶ **Dr. Joe Wujek - OB/GYN doctor and regenerative farmer on the urgent need for regenerative agriculture practices.**
- ▶ **Sr. Joan Spiering - M. Div., Good Shepherd Sister on why and how we need to ask for increased support in the federal Farm Bill for climate positive provisions.**
- ▶ **Dr. Frodo Okulam - scriptural basis for care for all of creation.**
- ▶ **William Jay Hunter, Jr. Esq. - Laudato Si**

Movement and current legal actions to effect a fair and fast transition from fossil fuel.

- ▶ **On September 22nd at 11:15 in Old Madeleine Church, attend the wonderful presentation by Fr. Kreipke, CSC, M. Div., PhD (Theology and Bioengineering, Notre Dame) on the biblical basis for fellowship and communion with God, each other and all of creation. (Coffee and donuts will be served.)**
- ▶ **7. Adopt a personal plan to honor God in creation, making each action an occasion of worship, e.g.**

- ▶ Reuse baggies
- ▶ Recycle
- ▶ Compost
- ▶ Take the bus/tram/train
- ▶ Walk
- ▶ Ride bikes
- ▶ Turn out lights
- ▶ Print double sided
- ▶ Use beeswax paper for storage
- ▶ Reuse all plastics
- ▶ Eat organic and regenerative food
- ▶ Tend a garden
- ▶ Help with recycling at The Madeleine
- ▶ Help landscape The Madeleine
- ▶ Use just one paper towel or air dry when washing hands
- ▶ Drive less
- ▶ Fly less
- ▶ Install a solar array
- ▶ Ask your landlord to install a solar array
- ▶ Ask the Archdiocese to install solar arrays
- ▶ Read and pray through Francis, "Laudato Si"
- ▶ Set a Google News Alert: "Climate Change"
- ▶ Follow climate litigation
- ▶ Follow climate legislation
- ▶ Vote (Pro-life, including climate justice)
- ▶ Lobby
- ▶ March
- ▶ Contribute money
- ▶ Volunteer
- ▶ Study and prayerfully contact a company to urge climate action
- ▶ Pray that global warming be reversed
- ▶ Hear the cry of the earth and the cry of the poor
- ▶ Do everything as an act of worship



Timmco
INSURANCE

Brian Timm
Susan Ames | Derek Ames

1615 NE Broadway | 503-288-8818
www.timmco.com

AUTO | HOME | BUSINESS | LIFE

TIM WALTERS

Principal Broker



The most trusted name in Real Estate!

Committed to the NE Portland

Neighborhoods since 1991



503-545-1880 | TimWaltersRealtor@Gmail.com | TimWaltersPc.com

ANNE C. STEINER
ESTATE PLANNING
ELDER LAW ATTORNEY

503.946.8361 • 1915 NE Cesar Chavez Blvd.
PARISHIONER - anne.c.steiner@gmail.com

WILLS - TRUSTS - PROBATE
GUARDIANSHIP - CONSERVATORSHIP

DDI benefits

**MEDICARE QUESTIONS?
WE CAN HELP!**

Medicare can be complicated,
but we can provide free unbiased
information and help navigate
the process to find just the right
solution for you.

Emmett Dooney, '11
Licensed Medicare Agent

503.206.4080

medicare@ddibenefits.com



T.C. O'LEARY'S

a little irish

PUB

2926 NE Alberta Street

A little taste of Ireland!

www.tcolearys.com



Parishioners Tom, Siobhan
& Aine O'Leary

JOHN M. WYNN

ATTORNEY AT LAW

McGill, Kapranos & Wynn

Parishioner

Hollywood Professional Center, 3939 NE Hancock St., Ste. 305
jmwpx@qwestoffice.net • 503-287-7333



JOSÉ MESA AUTO WHOLESALE, LLC

"The mobile auto dealer who is always in your neighborhood."

YOUR DISCOUNT AUTO RETAILER SINCE 1992!

sales@josemesa.com 503-789-0438 www.josemesa.com

NEW • USED • BUY • SELL • LEASE • TRADE • CONSIGN • BROKER • APPRAISE

Tutor/Coach

Helping K-5 Kids in

- Reading, Writing, & Math
- Learning Spanish
- Social Emotional Health

Yanick Mesa

503-789-2414

yanickmesa@gmail.com



THE LEARNING SUCCESS WAY
INSPIRE. LEARN. SUCCEED.



Dr. John R. Lewis

Beaumont Vision:
providing full-
service eyecare
for all ages,
including com-
prehensive
exams, glasses
and contacts

Stop by to view our unique
eyewear

Beaumont Vision Most insurances accepted

4331 NE Fremont St

Ph: 503-331-3937

**ADVERTISE
YOUR
BUSINESS
HERE!**

Various sizes available.
Contact Rich Hammons

bulletin@themadeleine.edu

BUY OR SELL



**OUR TEAM
CAN HELP!**

Opt.
REAL ESTATE

JEFF KERSTEN
REALTOR®

503.720.9179
jeff@theopt.com



Retrouvaille

A Christian Peer Ministry
A LIFELINE FOR
HURTING MARRIAGES

Is your marriage tearing
you and your family apart?

Weekends held 3 times per year in Oregon

www.helpourmarriage.com

503-704-7382

Donated by Kevin & Carol McMenamin

Maria Fitzgerald

REAL ESTATE BROKER

WINDERMERE REALTY TRUST

503-680-9737

Madeleine Mom & Parishioner



**maria
fitzgerald**

finding the home that fitz you...

**JOHN W. LOBO
PAINTING**

Custom Interior & Exterior
Creative Finishes
503-969-3337 CCB#89027
Licensed Bonded Insured



Sweetly Aimee, LLC
Custom Wedding and All-
Occasion Cakes and Desserts

Aimee Holzschuh
Parishioner & Parent
503.998.7368

www.SweetlyAimee.com



PAUL MYERS, Ph.D., LLC

PSYCHOTHERAPY, COUNSELING
& CONSULTING SERVICES

(503) 381-6685 paulmyersphdpdx@gmail.com
www.paulmyersphdpdx.com

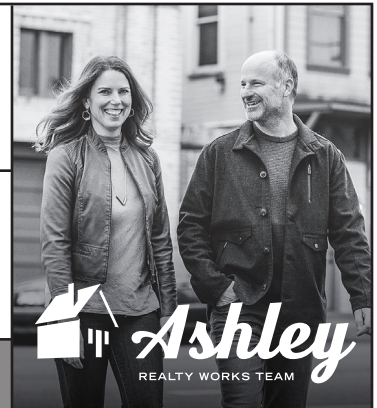


**THEORY
MORTGAGE**

Beating Banks Daily

Brian DuVal
503-850-7667

NMLS 5912, NMLS 1848246



PARISHIONERS, NEIGHBORS, EXPERT REALTORS

Wick & Karoline Ashley
karoline@ashleyrealtyworks.com
(503) 819-4851
237 NE Broadway Suite 100

RE/MAX
equity group

Mark McGinnis

Parishioner, Parent
Mortgage Advisor

NMLS 98586

503-348-4917

"It's about service!"



mark@theorymortgage.com

**THEORY
MORTGAGE**

**WILLAMETTE
FINANCIAL ADVISORS, LLC**
PERSONALIZED ADVICE FROM TRUSTED ADVISORS

James M Jones

Financial Advisor, CFP®

Parishioner

Direct 503.284.9200

Office 503.7470306

jimj@wfinadv.com



Whole house remodels

• Kitchens • Bathrooms

• Basements • Additions

In-house architecture & design

Nathalie Roloff, Parishioner

503.245.0685

rolloffconstruction.com

4300 NE Fremont #130

CCB #140721
WA#ROLOFC1873KU



Bulletin Advertising: Contact Rich Hammons • bulletin@themadeleine.edu • 503-281-5777