



THIS WEEK AT THE MADELEINE

Furthering the Reign of God, Where All Are Welcome • July 13–14, 2024

HIRING: ADMINISTRATIVE ASSISTANT FOR PARISH OFFICE

With the impending retirement of Janeen Reilly (we'll have more information about that in the next few weeks), The Madeleine is in the process of hiring an Administrative Assistant in our Parish Office.

This is an essential function within our community. This 32- to 40-hour per week benefits-eligible position is at the very center of everything that goes on here, and to many is the face of the parish (aside from the pastor, of course).

The Administrative Assistant serves as a resource to all in the parish office and to the parish community. In addition to typical admin duties, this position also has an important role in updating and managing donors and donations in our parish database, handling new parishioner registrations, managing our events calendar, managing Mass intentions and prayer requests, updating and maintaining sacramental records, working with outside groups who rent our event spaces, and much more.

As the control hub of the parish, we need someone with the ability to juggle

multiple simultaneous demands, prioritize workload to meet the needs of internal and external requestors.

Qualifications-wise, we're seeking a high school graduate (at minimum) with three to five years of office experience; two to four years experience in parish, pastoral center or other related entity is preferred, along with knowledge and understanding of church organization and operational procedures. Must be a practicing Catholic.

Proficiency with computer, calculator and basic office equipment, including experience with typical office software suites (Microsoft Office, Google Docs/Workspace).

Requires excellent communication skills (both verbal and written) and organizational skills with ability to meet deadlines. High level of accuracy and attention to detail with the ability to maintain confidentiality.

To apply, please send a resume, cover letter, and three professional references to My Schoning, mhoang@themadeleine.edu. Full job description available at www.themadeleine.edu/jobs.

Fifteenth Sunday in Ordinary Time

WE HEARD IN TODAY'S SECOND READING that God has lavished the riches of his grace upon us. He calls us, and he accompanies us in that call. God will ask much of us, but let us not be afraid, for God's call is an invitation to live fully, richly, and generously.

PRAY FOR OUR FAITHFULLY DEPARTED

- ▶ Tom Johnston
- ▶ James Rees
- ▶ Mary Clare O'Brien
- ▶ Marjorie Gianotti
- ▶ David Currie
- ▶ Greg Mistell
- ▶ Patti Dryden
- ▶ Lois Sykes
- ▶ Connee O'Leary
- ▶ Karen Shoop

PRAYER REQUESTS

For those who are ill, or in need of our prayers

- ▶ Nita Oliver
- ▶ Ann & Quenton Czuba
- ▶ Jean Mitchell
- ▶ Charli Phipps
- ▶ John Hunter
- ▶ Annie Young
- ▶ Corinne Jordan

MASS INTENTIONS

- 07/13, Sat David Currie †
- 07/14, Sun, 8:00 am .The Madeleine Community
10:00 am Gloria Deal †
- 07/16, Tues. Edward Richards †
- 07/17, Weds. Norm Seeger †
- 07/18, Thurs. Jerry Sullivan †
- 07/19, Fri. Mary Clare O'Brien †
- 07/20, Sat Alan Morrill †
- 07/21, Sun, 8:00 am .The Madeleine Community
10:00 am Michael Lavin †

THE HAITIAN PROJECT GARAGE SALE: DONATION DROPOFFS BEGIN MONDAY

Scour your garage, closets and attic! Get your shopping shoes on. It's nearly time for The Haitian Project Garage Sale at The Madeleine!



The Garage Sale benefits the Louverture Cleary School in Haiti, which offers a Catholic education to children who otherwise would not be able to

afford an education.

The Garage Sale is July 26–28, with donation dropoffs at the Parish Hall beginning July 15.

If you want to help, contact Steve Holmes, steveholmes@shtrucking.com or 503-706-7937. More information, (detailed dates, hours, etc.) at www.themadeleine.edu/haitian

Inside this week's bulletin:

- ▶ **Openings in The Madeleine School**—A few openings remain for this fall. Details Page 2
- ▶ **Celebrating St. Mary Magdalene**—July 20–21. Fun on the field and a Jazz & Garden Party. Pg 5
- ▶ **Haitian Project Garage Sale**—Clean out your attic or garage for stuff to donate...which then makes room for all the treasures you'll find at the sale! Sale dates, dropoff dates on Page 4

Calendar This Week

SUNDAY, JULY 14

8:00 am: Mass—Church

10:00 am: Mass—Church  **ALSO LIVESTREAMS**

MONDAY, JULY 15

6:30 pm: FA Meeting—Fireside Rm

TUESDAY, JULY 16

8:30 am: Mass—Church

9:00 am: Adoration—Church

6:30 pm: The Madeleine Book Club—St. Catherine Rm.

WEDNESDAY, JULY 17

8:30 am: Mass—Church

THURSDAY, JULY 18

8:30 am: Mass—Church

FRIDAY, JULY 19

8:30 am: Mass—Church

2:00 pm: Coley and Fitzgerald Wedding—Church

SATURDAY, JULY 20

► Feast of St. Mary Magdalene

2:00 pm: St. Mary Magdalene Weekend: Fun on the Field

4:00 pm: Confession—Church

5:00 pm: Mass—Church

SUNDAY, JULY 21

► Feast of St. Mary Magdalene

8:00 am: Mass—Church

10:00 am: Mass—Church  **ALSO LIVESTREAMS**

6:30 pm: St. Mary Magdalene Weekend: Vespers (Old Church) & Garden Party (Courtyard)

DAILY MASSES NOW AT 8:30 AM

Our Daily Mass time on Tuesday through Friday mornings has changed! Now at 8:30 am.

PARISH OFFICE CLOSED ON MONDAYS

The Madeleine Parish Office hours have also changed! We will be open 9:00 am–3:00 pm Tuesday through Friday each week. We will not be open on Mondays.

UPCOMING EVENTS

► **Celebrating St. Mary Magdalene:** July 20–21
Fun on the field, Jazz in the Courtyard

► **Haitian Project Garage Sale:** July 26–28
www.themadeleine.edu/haitian

► **Solemnity of the Assumption of the Blessed Virgin Mary:** August 15 •
Holy Day of Obligation. Masses at 9:00 am and 6:30 pm. Parish Office closed.

► **Wine Tasting:** September 7
www.themadeleine.edu/wine

► **The Madeleine Auction:** November 16
www.themadeleine.edu/auction

► **Madeleine Marketplace:** December 5

PARISH LIFE

ADORATION: SEEK INTIMACY WITH JESUS EVERY DAY

(Continuing last week's write-up of a *National Catholic Register* Adoration article:) Father Raymond de Souza also wrote that Pope Francis "has had a pontificate of adoration from the beginning." Adoration's importance showed when he made it the subject of his closing remarks to the first Synod on Synodality last October: "Let us devote time every day to intimacy with Jesus the Good Shepherd, adoring him in the tabernacle. May the Church adore: In every diocese, in every parish, in every community, let us adore the Lord! Only in this way will we turn to Jesus and not to ourselves. For only through silent adoration will the Word of God live in our words; only in His presence will we be purified, transformed and renewed by the fire of his Spirit. Brothers and sisters, let us adore the Lord Jesus!"

Tuesday Adoration begins after the 8:30 am Mass, ends at 2 pm

MADELEINE BOOK CLUB

We will begin our 2024–25 reading season with *Small Things Like These*, by Claire Keegan. We cordially invite you to join our group of enthusiastic readers for discussion of this excellent book the evening of July 16 @ 6:30 pm in the St. Catherine Room. To sign up to attend this discussion, or for more information about membership, please contact our MBC ministry coordinator Gretchen Stevenson, 503-312-6834 or gypsyfrau47@yahoo.com



MARRIAGE STRESS?

Retrouvaille is a program for married couples that feel bored, disillusioned, frustrated, or angry in their marriage. Retrouvaille is NOT just for couples whose marriage is on the verge of divorce or considered irrevocably broken; it is for any couple who would like to rediscover their marriage and improve communication. Visit helpourmarriage.org for information or to register for the August 23–25, 2024 in Canby, Oregon or email portland@retrouvaille.com or call 503-225-9191.

WOMEN'S COFFEE CLUB HAPPY HOUR

Monday, August 12, 3:00 pm

The Women's Coffee Club is celebrating summer and our new friendships with a Happy Hour on Monday, August 12 from 3:00 to 5:00 pm in the Parish Courtyard. Bring your own beverage and a snack to share. Spouses and significant others are invited to this event. The Happy Hour is in place of our regular gathering (on the second Monday of each month). We welcome all women of the parish to join us for the Happy Hour and for our regular meetings. Come see what we are all about...connection and conversation.

COMMON GROUND DVD AVAILABLE

The Madeleine's Laudato Si' group has shown the award winning film, Common Ground twice recently to enthusiastic audiences. The DVD is now available for you to borrow from the parish office for your home gathering or other group. You don't want to miss this opportunity as the DVD's are no longer available! You will learn that regenerative farming can create a healthy food system, healthy people and mitigate climate change. You will feel hope for the future. Call the parish office to borrow the DVD.

School News



In addition to excellence in all core subjects, including specialist teachers for **Science** and **Technology**, we offer:
art • music • p.e.
learning support • onsite counselor

Space available in Pre-K, Kindergarten, 1st, 3rd, & 4th grades.

Schedule a tour now!

503-288-9197

admissions@themadeleine.edu



In the Gospel today we see how Jesus sent his Apostles out two by two. From the beginning of the Society of St. Vincent de Paul, members visit in pairs "two by two", those who are poor and needy in their homes. It is there, in the family setting, that Vincentians listen, offer humble advice, and render assistance. Have you considered answering the call to help serve the poor by joining the Society of St. Vincent de Paul?
—Lisa Hawkins, (503) 309-7968

ADVERTISE IN THE PARISH BULLETIN

It's one of the best kept secrets and biggest bargains in the area...Madeleine Parish Bulletin Advertising. The back page of your weekly bulletin is a great place to get the word out to our parish community of your goods or services. For the first time in a few years, we have some spaces available.

► **Affordable**—Starting at just \$145 for the 8 months May through December (\$220 per full year). We usually bill 12 months January to December, but will gladly accept your ad May through December this year.

► **Versatile**—Many sizes available...based on our "single" size module, you can stack it two or three high, stretch it two or three wide...whatever size you need to get your brand's message across to our readers.

► **Relatable**—Members of The Madeleine community tend to be very loyal to their fellow parishioners. By advertising in the bulletin, you're demonstrating that you're an integral part of our parish community.

► **Good Company**—On the back of our bulletin are some of the stalwart companies in our parish and community. Several familiar names have been with us for decades...isn't it time you joined them? Contact Rich Hammons, Director of Communications, at bulletin@themadeleine.edu

Single: 1 7/8" X 7/8"
May-December: \$145

Double Stretch: 3 3/4" X 7/8"
May-December: \$247.50

Double Tall: 1 7/8" X 1 3/4"
May-December: \$247.50

ASSISTED LISTENING DEVICES AVAILABLE

Available in the Sacristy at Masses

As lovely and soaring as our beloved church is, sometimes its lively acoustics can make hearing all of Mass a challenge...especially some of our presiders who are easier to hear than others. But we have a solution!

In the Sacristy, we have assisted listening devices for your use during Mass.



They're very easy to use and can vastly improve the experience at Mass for those with hearing challenges. Just take a device, plug in a headphone, and adjust the volume to your comfort. We just ask you to sign the check-out list and return them at the end of Mass. Questions? Ask any Minister of Hospitality.

CYO FALL SPORTS REGISTER NOW!



CROSS COUNTRY



SWIMMING



FALL HOT SHOTS



VOLLEYBALL

NEW!!!! BOYS CYO VOLLEYBALL



REGISTER AT WWW.CYOCAMPHOWARD.ORG

WEEKLY MASS TIMES

Regular Mass Times:

Tuesday, Wednesday, Friday 8:30 am
Thursday. School not in session: 8:30 am
School in session: 2:00 pm

Note new times for weekday Masses!

Saturday Vigil 5:00 pm
Sunday 8:00 am, 10:00 am

Penance Saturday, 4:00-4:40 pm
Adoration. Tuesdays, 9:00 am-2:00 pm

PARISH OFFICE

Hours Tuesday-Friday, 9:00 am-3:00 pm
As of July 1, parish office is closed on Mondays
Phone: 503-281-5777 Fax: 503-281-0673
School Office. 503-288-9197

PARISH STAFF

- Rev. Bonaventure Rummell**—Administrator
fatherbonaventure@themadeleine.edu . . . ext. 111
- Msgr. Timothy Murphy**—In Residence
- Rev. Nazario Atukunda**—In Residence
- Deacon Mike O'Mahoney**—Permanent Deacon
deaconmike@themadeleine.edu
- Tresa Rast**—School Principal
trast@themadeleine.edu 503-288-9197
- My Schoning**—Business Manager
mhoang@themadeleine.edu ext. 118
- Linda Scheurman**—Bookkeeper
lscheurman@themadeleine.edu ext. 119
- Maria Manzo**—Director of Music
mmanzo@themadeleine.edu ext. 113
- Guy Allen**—Facilities Manager, Events Manager
gallen@themadeleine.edu
- Janeen Reilly**—Parish Administrator
jreilly@themadeleine.edu ext. 110
- Gretchen Stevenson**—Office
gstevenson@themadeleine.edu ext. 112
- Julie Kupers**—Special Events
jkupers@themadeleine.edu . . . 720-936-5635
- Rich Hammons**—Director of Communications
rhammons@themadeleine.edu ext. 129

SACRAMENTS

- Infant Baptism, Marriages, Anointing of the Sick**—
Fr. Bonaventure Rummell. ext. 111
- First Reconciliation, First Eucharist**—
Rose Horton . . . sac-prep@themadeleine.edu
- RCIA**—Donna Mason, rcia@themadeleine.edu
- Funerals**—
Therese Fenzl tfenzl@themadeleine.edu

COUNCILS & CONTACTS

- Pastoral Council**—Amy Moran . . .617-470-7926
- Finance/Admin**—John Garrow . .503-803-5693
- Buildings & Grounds**—Erin Couch . . 503-281-9575
- School Advisory**—Tim Resch503-984-4607
- Facility Requests**—themadeleine.edu/facilities
- Maintenance Requests**—My Schoning
mhoang@themadeleine.edu ext. 114
- Knights of Columbus**—
Dan O'Donnell 503-440-9415
- Ministry Schedule**
www.themadeleine.edu/minister-schedule

Bulletin submissions due 5:00 pm Tuesday
Email to bulletin@themadeleine.edu

THE MADELEINE PARISH 23RD ANNUAL

Haitian Project Garage Sale

All sales benefit the Louverture Cleary Catholic School in Haiti

2024 SALE DATES

- **Friday, July 26**, 9 am–3 pm
- **Saturday, July 27**, 9 am–3 pm
- **Sunday, July 28**, 9 am–1 pm (50% off day!)

DROP OFF DONATIONS

- Monday, July 15 through Tuesday, July 23,
9 am–3 pm, at The Madeleine Parish Hall,
3123 NE 24th Ave.

NEEDED ITEMS INCLUDE:

Dishes, Furniture, Kitchen Items, Sports Equipment, Children's Indoor and Outdoor Toys, Clothing, Books, Yard Care Items, Seasonal Decorations, Decorative Items, Collectibles, Fine China, Electrical Items and more...

Questions? Items to pickup? Want to help?

**Contact Steve Holmes, 503-706-7937,
steveholmes@shtrucking.com**

More volunteer information at www.themadeleine.edu/haitian



Celebrating St. Mary Magdalene Weekend of July 20-21

Join us July 20 & 21 as we celebrate our patroness,
St. Mary Magdalene, with two special events.

Saturday 2:00 pm Family Fun on the Field

Fun for the entire family! Ice cream, bbq, cornhole tournament, flag football, kickball, tie-die party (bring your own white shirt). Tickets \$5. Beer and Cider available for purchase. For tickets and to volunteer, visit www.themadeleine.edu/mary

Sunday 6:30 pm Jazz & Garden Party

An evening of jazz, prayer, food and community as we celebrate the Feast of St. Mary Magdalene. We start with Jazz Vespers in The Old Madeleine Church, followed by a garden party with live music in the Courtyard. Relaxing music, food and beverages—bring a blanket!

Details & Volunteer:
www.themadeleine.edu/mary



RECYCLING PROGRAMS AT THE MADELEINE

Marked collection bins in the breezeway facing 23rd Ave.

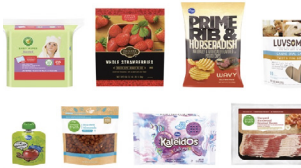
The Madeleine's Laudato Si' Circle and Care for Creation Ministry have joined with U. S. based recycler, Terracycle, to offer our parish, school, and community opportunities to responsibly recycle specific items (primarily plastics) not generally handled at curbside. Terracycle has added more manufacturers to its program, and in turn, we have expanded our recycling offerings. Here is a current listing of what we are collecting. Please keep this in mind:

- ▶ Do not include garbage or items not specifically mentioned in the descriptions.
- ▶ Empty containers of contents. No need to wash first; ensure packaging is dry.



KROGER FLEXIBLE PLASTICS

All Kroger brand flexible plastic packaging can now be accepted.



Includes Private Selection and Simple Truth brands as well.

LATE JULY® SNACKS

All Late July® snack packaging as seen in these examples. Limited to Late July brand only.



GILLETTE® AND VENUS RAZORS AND RAZOR BLADES

All brands of blades and razors (systems and disposable units, and replaceable-blade cartridge units), rigid plastic packaging, and flexible plastic bag packaging.



AIR CARE PRODUCTS AND PACKAGING AND MR. CLEAN DEEP CLEANING MIST

All brands of air and home cartridges, air and home care plugs, air and home care trigger heads, and air and home care plastic and film packaging. No aerosol containers. Remove as much of remaining product as possible.



HAIR CARE APPLIANCES AND TOOLS

All types and brands of hair care tools and appliances, including hair dryers, straightening irons, curling irons, thermal brushes and mini tools.



ORAL CARE PRODUCTS

All brands of used or empty oral care products, including toothpaste tubes, tooth brushes, and dental floss containers.



SWIFFER REFILLS

Swiffer only brands of Sweeper™ Dry, Wet, and XL Refills, WetJet Refills™, and Duster™ Refills.



FABRIC CARE PRODUCTS & PACKAGING

From Tide, Gain, Downy, NBD and Dreft, including plastic components (dispensing cup, bag, nozzle, nozzle clip), and plastic packaging wrap, flexible plastic bags, rigid plastic tubs and lids, and Tide To Go pen.



CIGARETTE BUTTS, SANTA FE NATURAL TOBACCO COMPANY

All brands of fully extinguished cigarettes (and ashes) and tobacco products, including filters, plastic packaging, inner foil packaging, rolling paper, and loose tobacco pouches.



USED SOCKS (ALL BRANDS)

Used clean socks only; pairs and singles are accepted. Not meant for new sock donations. No stockings, tights, or pantyhose.



REDYPER DISPOSABLE DIAPERS (Offsite subscription service)

Subscription service for purchasing and recycling Redyper brand disposable diapers through Terracycle

Details on all programs at www.themadeleine.edu/terracycle



Annual Wine Tasting Celebration • September 7

Tickets on sale now • www.themadeleine.edu/wine

Early Bird Pricing through July 31: \$55/person

Mark your calendar for September 7, when we'll be Walla Walla Wandering from the comfort of The Madeleine Courtyard!

Our annual wine tasting celebration will feature:

- ▶ Tasting of six fabulous wines from the Walla Walla region.
- ▶ Paired with the wines will be delicious complementary cuisine.
- ▶ Live music by Rose City Youth Ensemble.
- ▶ A Wall of Wine will be available at the event.
- ▶ Early Bird Pricing: \$55 before July 31 • \$65 after
- ▶ Childcare available; \$10/child. Pre-registration required.

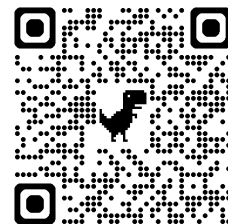
Tickets are available now! Visit www.themadeleine.edu/wine to sign up online.

Donations and volunteers welcome!

- ▶ Do you have any wines you'd like to donate for our Wall of Wine?
Minimum value \$25, please.
- ▶ Would you be willing to volunteer to work the event?

If your answer is "yes," contact Julie Kupers, jkupers@themadeleine.edu

NOTE: If you purchased and retained a ticket for the 2023 event, please check your email for your options.





Timmco
INSURANCE

Brian Timm
Susan Ames | Derek Ames

1615 NE Broadway | 503-288-8818
www.timmco.com

AUTO | HOME | BUSINESS | LIFE

TIM WALTERS

Principal Broker



The most trusted name in Real Estate!

Committed to the NE Portland

Neighborhoods since 1991



503-545-1880 | TimWaltersRealtor@gmail.com | TimWaltersPc.com

ANNE C. STEINER
ESTATE PLANNING
ELDER LAW ATTORNEY

503.946.8361 • 1915 NE Cesar Chavez Blvd.
PARISHIONER - anne.c.steiner@gmail.com

WILLS - TRUSTS - PROBATE
GUARDIANSHIP - CONSERVATORSHIP

DDI benefits

**MEDICARE QUESTIONS?
WE CAN HELP!**

Medicare can be complicated,
but we can provide free unbiased
information and help navigate
the process to find just the right
solution for you.

Emmett Dooney, '11
Licensed Medicare Agent

503.206.4080

medicare@ddibenefits.com



T.C. O'LEARY'S

a little irish

PUB

2926 NE Alberta Street

A little taste of Ireland!

www.tcolearys.com



Parishioners Tom, Siobhan
& Aine O'Leary

JOHN M. WYNN

ATTORNEY AT LAW

McGill, Kapranos & Wynn
Parishioner

Hollywood Professional Center, 3939 NE Hancock St., Ste. 305
jmwpxd@qwestoffice.net • 503-287-7333



JOSÉ MESA AUTO WHOLESALE, LLC

"The mobile auto dealer who is always in your neighborhood."

YOUR DISCOUNT AUTO RETAILER SINCE 1992!

sales@josemesa.com 503-789-0438 www.josemesa.com

NEW • USED • BUY • SELL • LEASE • TRADE • CONSIGN • BROKER • APPRAISE

**ADVERTISE YOUR
BUSINESS HERE!**

Various sizes available.

Contact Rich Hammons
bulletin@themadeleine.edu

BUY OR SELL



**OUR TEAM
CAN HELP!**

Opt.
REAL ESTATE

JEFF KERSTEN
REALTOR®
503.720.9179
jeff@theopt.com



Dr. John R. Lewis

Beaumont Vision

*Beaumont Vision:
providing full-
service eyecare
for all ages,
including com-
prehensive
exams, glasses
and contacts*

*Stop by to view our unique
eyewear
Most insurances accepted*

4331 NE Fremont St

Ph: 503-331-3937

**ADVERTISE YOUR
BUSINESS HERE!**

Contact Rich Hammons
bulletin@themadeleine.edu

**JOHN W. LOBO
PAINTING**

Custom Interior & Exterior
Creative Finishes
503-969-3337 CCB#89027
Licensed Bonded Insured



Sweetly Aimee, LLC
Custom Wedding and All-
Occasion Cakes and Desserts

Aimee Holzschuh
Parishioner & Parent
503.998.7368

www.SweetlyAimee.com

Retrouvaille

A Christian Peer Ministry
A LIFELINE FOR
HURTING MARRIAGES

Is your marriage tearing
you and your family apart?

Weekends held 3 times per year in Oregon

www.helpourmarriage.com

503-704-7382

Donated by Kevin & Carol McMenamin

Maria Fitzgerald

REAL ESTATE BROKER
WINDERMERE REALTY TRUST
503-680-9737

Madeleine Mom & Parishioner



**maria
fitzgerald**
finding the home that fitz you...



PAUL MYERS, Ph.D., LLC

PSYCHOTHERAPY, COUNSELING
& CONSULTING SERVICES

(503) 381-6685 paulmyersphdpdx@gmail.com
www.paulmyersphdpdx.com

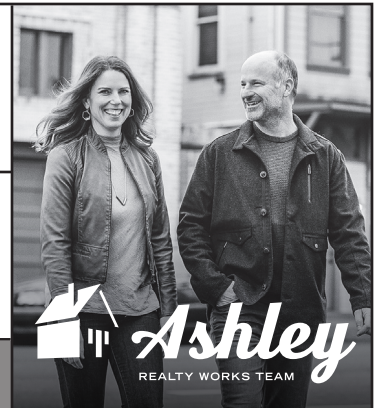


**THEORY
MORTGAGE**

Beating Banks Daily

Brian DuVal
503-850-7667

NMLS 5912, NMLS 1848246



PARISHIONERS, NEIGHBORS, EXPERT REALTORS

Wick & Karoline Ashley
karoline@ashleyrealtyworks.com
(503) 819-4851
237 NE Broadway Suite 100

RE/MAX
equity group

**ADVERTISE
YOUR
BUSINESS
HERE!**

Contact Rich Hammons
bulletin@themadeleine.edu



James M Jones

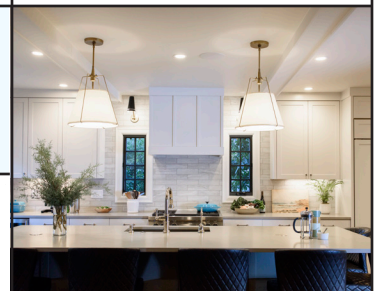
Financial Advisor, CFP®

Parishioner

Direct 503.284.9200

Office 503.7470306

jjmj@wfinadv.com



Whole house remodels

• Kitchens • Bathrooms

• Basements • Additions

In-house architecture & design

Nathalie Roloff, Parishioner

503.245.0685

roloffconstruction.com

4300 NE Fremont #130

CCB #140721
WA#ROLOFC1873KU



Bulletin Advertising: Contact Rich Hammons • bulletin@themadeleine.edu • 503-281-5777