

THIS WEEK AT THE MADELEINE

Furthering the Reign of God, Where All Are Welcome • May 11–12, 2024



FIRST COMMUNION 2024

Congratulations to 25 of our young parishioners who made their First Communion last weekend at our 10:00 am Mass. Thank you to their parents for their commitment and to The Madeleine community for prayers and support, and to Deacon Mike and Fr. Bonaventure for spiritual guidance. Finally, special thanks to catechists Rose Horton, Siobhan O’Leary, and Mary Witka, who have done such a wonderful job preparing the children for their First Communion.

Inside this week’s bulletin:

- ▶ **Pentecost Vespers, May 19**—Join with the combined choirs of The Madeleine and Our Lady of the Lake as we celebrate in prayer and song the work of the Holy Spirit through music. Page 5.
- ▶ **Pastoral Council Town Halls, May 18-19**—The Madeleine Pastoral Council will host town hall sessions after each of the three Masses. Details Page 2.
- ▶ **Bulletin Advertising Opportunities**—We have some rare openings in our bulletin for businesses who want to advertise to The Madeleine community. Page 4.

The Ascension of the Lord

ON THIS SOLEMNITY OF THE ASCENSION, we remember that Christ’s ascension marks the definitive entrance of Jesus’ humanity into God’s heavenly domain. This Solemnity reminds us that like the first disciples, we are not to dally “looking up at the sky,” but are to get busy proclaiming the glory of God’s kingdom by the witness of our lives

PRAY FOR OUR FAITHFULLY DEPARTED

- ▶ Patti Dryden
- ▶ Lois Sykes
- ▶ Connee O’Leary

PRAYER REQUESTS

For those who are ill, or in need of our prayers

- ▶ John Hunter
- ▶ Ann LaGrande
- ▶ Annie Young
- ▶ Jeffery Barron
- ▶ Alice Herrell
- ▶ Karen Shoop
- ▶ Chris Nieman
- ▶ Corinne Jordan
- ▶ Fr. John McGrann

MASS INTENTIONS

- 05/11, Sat Virginia Bleeg †
- 05/12, Sun, 8:00 am .The Madeleine Community
- 10:00 am Mildred Wright †
- 05/14, Tues David Hulscher †
- 05/15, Weds Colette Turina †
- 05/16, Thurs Debbie Barsotti †
- 05/17, Fri Kameron Beaulieu †
- 05/18, Sat Alan Morrill †
- 05/19, Sun, 8:00 am .The Madeleine Community
- 10:00 am Mary Moreland †

BIRTHDAYS, REDUX

We missed some birthdays in last week’s bulletin! Belated birthday wishes to Gene and Peggy Sanders.

Calendar This Week

SUNDAY, MAY 12

- ▶ Mothers Day
- 8:00 am: Mass—Church
- 10:00 am: Children's Liturgy of the Word—Fireside Rm
- 10:00 am: Mass—Church  **ALSO LIVESTREAMS**
- 11:15 am: Minister of Hospitality Training—Church

MONDAY, MAY 13

- 6:30 pm: FA Meeting—Fireside Rm

TUESDAY, MAY 14

- ▶ Nourish Our Neighbors (NON)-8th Grade
- 8:00 am: Mass—Church
- 9:00 am: Adoration—Church
- 7:00 pm: Parents Club—Library

WEDNESDAY, MAY 15

- 8:00 am: Mass—Church
- 5:30 pm: Chimes Rehearsal—Church
- 7:00 pm: Madeleine Choir Rehearsal—Church

THURSDAY, MAY 16

- 2:00 pm: Mass—Church
- 6:30 pm: SAC—Library

FRIDAY, MAY 17

- ▶ School Jogathon
- 8:00 am: Mass—Church
- 6:30 pm: Alice in Wonderland-Middle School Musical—Parish Hall

SATURDAY, MAY 18

- 8:30 am: Aurora Chorus Retreat—Old Madeleine Church
- 1:00 pm: Alice in Wonderland Middle School Musical—Parish Hall
- 4:00 pm: Confession—Church
- 5:00 pm: Mass—Church

SUNDAY, MAY 19

- ▶ Pentecost
- 8:00 am: Mass—Church
- 8:30 am: Aurora Chorus Retreat—Old Madeleine Church
- 10:00 am: Mass—Church  **ALSO LIVESTREAMS**
- 11:30 am: RCIA—Fireside Rm
- 6:30 pm: Pentecost Vespers—The Old Madeleine Church

SAVE THE DATE

- ▶ **Wine Tasting:** September 7
- ▶ **The Madeleine Auction:** November 16
- ▶ **Madeleine Marketplace:** December 5

PARISH LIFE

“WHAT IS A PASTORAL COUNCIL, AND HOW CAN I HELP?”

The Madeleine Pastoral Council is currently rotating its membership and beginning a new round of pastoral planning. To help inform both future membership and planning, the Council will be hosting wine & cheese or coffee and donuts during informal town halls after the 5:00 pm Saturday Mass and 8:00 and 10:00 am Sunday Masses on May 18 and 19.

We encourage parishioners to come mingle to meet your current pastoral council members and become familiar with their mission which includes:

- ▶ Understanding the parish mission
- ▶ Identifying pastoral priorities
- ▶ Setting pastoral goals & specifying objectives.

The Madeleine Pastoral Council is grateful for your support and interest. If you cannot join us next weekend, please feel free to reach out to Fr. Bonaventure (fatherbonaventure@themadeleine.edu) or Amy Moran (current Chair, amy.e.moran@gmail.com).

MOTHER'S DAY BABY BOTTLE DRIVE

This year, the Knights of Columbus are again doing their annual Baby Bottle Drive for Mother and Child. Mother and Child Education Center appreciates the support of The Madeleine community in helping their efforts to assist prospective and new parents with their children. Mother and Child provides no-cost pregnancy tests and connects pregnant moms and dads with resources, diapers, baby clothing, maternity clothes, and support.

Bottles can be returned on Mother's Day, May 12 after the Masses. Or you can use the QR code to make a secure contribution with either your credit card or debit card.



ADORATION: PILGRIMAGE IN 4 ROUTES IGNITING A U.S. EUCHARISTIC REVIVAL

On May 16, U.S. Catholics will begin walking from north, south, east and west on four-routes of a national Eucharistic Pilgrimage. The four pilgrimage routes will link up in Indianapolis, IN, July 17 for our National Eucharistic Revival. The northern route starts at Lake Itasca, MN; the eastern at New Haven, CT; the southern from Brownsville, TX; and the western from San Francisco. The four completed routes will make a Eucharistic Sign of the Cross over our nation. For a map of the Eucharistic Pilgrimage, see the United States Conference of Catholic Bishops' website: eucharisticpilgrimage.org. The bishops say everyone is invited to walk in the Pilgrimage for short distances, but only a few young, committed adults will make the full journey to Indianapolis. Along the way on each route, many events are scheduled, including Masses and Adoration. On their USCCB website, the bishops offer all Catholics many opportunities to participate in the Eucharistic Pilgrimage they call “Our National Emmaus Moment” (The Emmaus story is told in Luke 24: 13-35).

Tuesday Adoration begins after the 8 am Mass, ends at 2 pm.

ARCHBISHOP'S CATHOLIC APPEAL

By now you have received a mailing or may have picked up an envelope here at the parish for the Archbishop's Catholic Appeal. The appeal is focused on supporting the vital programs and ministries that we all depend upon to sustain the Catholic Church in Western Oregon. If you have not had a chance to watch the video, we encourage you to do so at JesusChangesEverything.church. Your support makes a real difference. You can contribute by mail using a pew envelope, or online at JesusChangesEverything.church.

“Encountering people, sharing a gaze and our stories: this is the closeness of Jesus that we are called to live. An encounter can change a life. The #Gospel is filled with these encounters with Jesus that uplift and heal.”

—Pope Francis via X (Twitter) @pontifex



Today as we celebrate the feast of the Ascension we are reminded that Christ's saving work on earth continues through his disciples...and now through us. When we give to the poor, God indeed pours his love, peace and joy into our hearts, into our lives and into the hearts of those who are poor.

—Mary Clare O'Brien, 503-309-7639

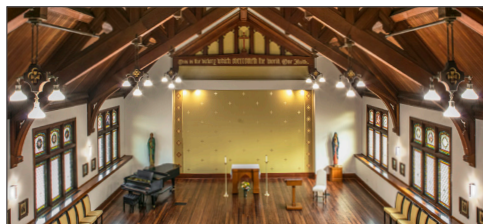
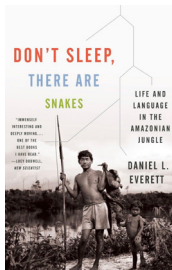
MINISTERS OF HOSPITALITY NEEDED

Training opportunities available during May and June

Looking for a new ministry opportunity? The Hospitality Ministry is inviting families, couples, and individuals to consider joining the Hospitality team. We have the joy of greeting those who come through the door for Mass as well as providing service during the Mass (such as helping with the Presentation of the Gifts and taking up the collection). We try to honor Mass preferences (only 8 am Mass, for example) and frequency of service (every week or just once a month). Training opportunities: May 11 or June 8 after the 5 pm Mass, May 12 or June 9 at 9 am. Interested? Contact Christi Bohmbach at c_bohmbach@yahoo.com or 503-206-1900.

MADELEINE BOOK CLUB

Our group is currently reading *Don't Sleep, There Are Snakes: Life and Language in the Amazonian Jungle*, by Daniel L. Everett. A riveting account of the astonishing experiences and discoveries made by linguist Everett, then a Christian missionary, while he lived with the Pirahã, a small tribe of Amazonian Indians in central Brazil. There will be two opportunities to meet for discussion of this book in mid-May and we would love for you to join us. For further information please contact our MBC ministry coordinator Gretchen Stevenson, gypsyfrau47@yahoo.com, 503-312-6834.



Upcoming Concerts

OC=Old Madeleine Church MC=Main Church

- ▶ **May 23, 7:00 pm** OC • 45th Parallel • Leo Eguchi Unaccompanied • 45thparallelpdx.org
- ▶ **May 24, 6:00 pm** OC • Pacific Rose Ensemble, A Joyous Finale • www.pacificroseensemble.org
- ▶ **June 4, 7:00 pm** OC • 45th Parallel • Unapologetic • 45thparallelpdx.org



ASSISTED LISTENING DEVICES AVAILABLE

Available in the Sacristy at Masses

As lovely and soaring as our beloved church is, sometimes its lively acoustics can make hearing all of Mass a challenge...especially some of our presiders who are easier to hear than others. But we have a solution!

In the Sacristy, we have assisted listening devices for your use during Mass. They're very easy to use and can vastly improve the experience at Mass for those with hearing challenges. Just take a device, plug in a headphone, and adjust the volume to your comfort. We just ask you to sign the check-out list and return them at the end of Mass.

Questions? Ask any Minister of Hospitality.

FAMILY ACTIVITIES FROM THERESE FENZL

Dear Madeleine Families,

Have you ever heard of the word "examen"? St. Ignatius was eager to open to the discovery of God in every part of his life. He found a special way of turning to God each evening and reflecting on how he had met God that day. He called this method of prayer "The Daily Examen." It is a way of prayer which I have found tremendously helpful and engage in every evening.

Recently I discovered a simple book written by Nancy Aandzuch and illustrated by Jen Olsen. It is entitled: *The Family Examen*. It is simply and beautifully written. The book explains 6 steps that could be followed by a family--each evening or even a couple of times a week. They are: 1. Become aware of God's presence. 2. Reflect on the day with gratitude. 3. Discover where you experienced love. 4. Bring your failures to God, and ask for forgiveness. 5. Look toward tomorrow. 6. End with a short prayer.

The book goes into the steps in detail in a way that it can be very easy for a family to follow and that will bless your family abundantly.

WEEKLY MASS TIMES

Regular Mass Times:

Tuesday, Wednesday, Friday 8:00 am
 Thursday School days: 2:00 pm
 Thursdays when school not in session: 8:00 am
 Saturday Vigil 5:00 pm
 Sunday 8:00 am, 10:00 am

Penance Saturday, 4:00-4:40 pm
Adoration Tuesdays, 9:00 am-2:00 pm

PARISH OFFICE

Hours Monday-Friday, 9:00 am-3:00 pm
Phone: 503-281-5777 **Fax:** 503-281-0673
School Office 503-288-9197

PARISH STAFF

- Rev. Bonaventure Rummell**—Administrator
fatherbonaventure@themadeleine.edu . . . ext. 111
- Deacon Mike O'Mahoney**—Permanent Deacon
deaconmike@themadeleine.edu
- Tresa Rast**—School Principal
trast@themadeleine.edu 503-288-9197
- Darlene Maurer**—Pastoral Assistant
dmaurer@themadeleine.edu ext. 125
- My Schoning**—Business Manager
mhoang@themadeleine.edu ext. 118
- Linda Scheurman**—Bookkeeper
lscheurman@themadeleine.edu ext. 119
- Therese Fenzl**—Director of Spiritual Ministries
tfenzl@themadeleine.edu ext. 116
- Maria Manzo**—Director of Music
mmanzo@themadeleine.edu ext. 113
- Guy Allen**—Facilities Manager, Events Manager
gallen@themadeleine.edu
- Janeen Reilly**—Parish Administrator
jreilly@themadeleine.edu ext. 110
- Gretchen Stevenson**—Office
gstevenson@themadeleine.edu ext. 112
- Julie Kupers**—Special Events
jkupers@themadeleine.edu . . . 720-936-5635
- Rich Hammons**—Director of Communications
rhammons@themadeleine.edu ext. 129

SACRAMENTS

- Funerals, Infant Baptism**—
Darlene Maurer ext. 125
- Marriages, Anointing of the Sick**—
Fr. Bonaventure Rummell ext. 111
- First Reconciliation, First Eucharist**—
Rose Horton . . . sac-prep@themadeleine.edu
- RCIA**—Donna Mason, rcia@themadeleine.edu
- Confirmation**—Therese Fenzl ext. 116

COUNCILS & CONTACTS

- Pastoral Council**—Amy Moran . . 617-470-7926
- Finance/Admin**—John Garrow . . 503-803-5693
- Buildings & Grounds**—Erin Couch . . 503-281-9575
- School Advisory**—Tim Resch 503-984-4607
- Facility Requests**—themadeleine.edu/facilities
- Maintenance Requests**—My Schoning
mhoang@themadeleine.edu ext. 114
- Knights of Columbus**—
Dan O'Donnell 503-440-9415
- Ministry Schedule**
www.themadeleine.edu/minister-schedule
- Bulletin submissions due 5:00 pm Tuesday**
Email to bulletin@themadeleine.edu

FRIENDSHIP GROUP

Catholic Friendship Group is for single Catholics ages 40 to 60 throughout the Archdiocese of Portland who are looking to grow in faith and fellowship. We meet every other week from 7 pm-8:30 pm at St. Birgitta's, 11820 NW St. Helens Rd.

More info and our 2024 slate of topics at www.catholicfriendshipgroup.com. Fr. Clifton will speak on Christ's Ascension and Early Church Fathers.

OREGON MARCH FOR LIFE

May 18 at 2:15 pm • State Capitol

Join Archbishop Alexander Sample and thousands of Oregonians on May 18th at the Oregon State Capitol as we continue to advocate for a culture of life in Oregon. The band will begin playing at 2:15 pm with speakers starting at 2:30 pm. The Oregon March for Life will begin immediately following. For over 50 years, Oregon Right to Life has gathered pro-life advocates of all ages annually to remember the lives lost to abortion and encourage hope and action to support mothers to choose life for their children.

TIPS FOR GREEN LIVING

When planning your weekly meals, choosing fresh foods is not only beneficial for your body, but also for the Earth. We do not always think about it, but generally, a great deal of energy (and greenhouse gases) gets wasted in producing frozen meals and over-packaged foods. If you are used to buying prepared foods and meals, why not try to make meals with fresh foods instead? Your body and the Earth will thank you!

Perhaps Jesus was not thinking about paper or plastic when he told his disciples to go and taking nothing with them. However, what we take with us to carry our groceries does make a difference when it comes to God's Creation. Over one million birds and 100,000 marine mammals and sea turtles die each year after having swallowed miscellaneous plastic articles or after having been caught in plastic. Why not take a reusable bag, sold in most grocery stores or community organizations?

ADVERTISE IN THE PARISH BULLETIN

It's one of the best kept secrets and biggest bargains in the area...Madeleine Parish Bulletin Advertising. The back page of your weekly bulletin is a great place to get the word out to our parish community of your goods or services. For the first time in a few years, we have some spaces available.

► **Affordable**—Starting at just \$145 for the 8 months May through December (\$220 per full year). We usually bill 12 months January to December, but will gladly accept your ad May through December this year.

► **Versatile**—Many sizes available...based on our "single" size module, you can stack it two or three high, stretch it two or three wide...whatever size you need to get your brand's message across to our readers.

► **Relatable**—Members of The Madeleine community tend to be very local to their fellow parishioners. By advertising in the bulletin, you're demonstrating that you're an integral part of our parish community.

► **Good Company**—On the back of our bulletin are some of the stalwart companies in our parish and community. Several familiar names have been with us for decades...isn't it time you joined them?

To advertise, contact Rich Hammons, Director of Communications, at bulletin@themadeleine.edu

Single: 1 7/8" x 7/8"
May-December: \$145


Double Stretch: 3 3/4" x 7/8"
May-December: \$247.50

Double Tall: 1 7/8" x 1 3/4"
May-December: \$247.50

45th Parallel Universe

SPRING CONCERTS


World class virtuosity coming to Northeast Portland!



UNACCOMPANIED

Thursday, May 23
 The Old Madeleine Church
 7:00 pm

Boston-based cellist Leo Eguchi presents: UNACCOMPANIED, a performance featuring eight short new works for solo cello which explore personal stories of immigration and American identity.




UNAPOLOGETIC


Tuesday, June 4
 The Old Madeleine Church
 7:00 pm

We showcase the works of contemporary composer Damien Geter and 19-century composer Louise Farrenc, highlighting the striking contrasts and commonalities between these two exceptional composers.

Check our website for Garden Concerts coming in September.



Purchase Tickets now!
45THPARALLELPDX.ORG



I Will Sing With The Spirit: Pentecost Vespers

Sunday, May 19, 6:30 pm • Old Madeleine Church

Come and “Send Forth Your Spirit”! Experience the beauty of early Catholic traditional music with our Pentecost Vespers music and prayer service.

Join with the combined choirs of The Madeleine and Our Lady of the Lake as we celebrate in prayer and song the work of the Holy Spirit through music.



COMPASSION WITH COMMON SENSE

CATHOLIC CHARITIES SECOND COLLECTION MAY 4-5



Catholic Charities

Providing Help, Creating Hope

At Catholic Charities of Oregon, we offer compassionate help with common sense. That tradition comes down from the nuns who started Catholic social service in the state in 1844 and continued with the founding of Catholic Charities in 1933.

Many strong women have carried the tradition ever since. Parishes also run on the efforts of dedicated women. Perhaps that's why Catholic Charities and parishes are such natural partners.

This year, as we approach Mother's Day, we invite you to celebrate women you admire by offering support in their names. We'll create and publish a list of names.

Founded during the Great Depression, we are your official domestic relief agency. The need continues today, and parishioners — whatever their gender of course — are part of the solution.

Your gift to our 2024 annual appeal enables us to continue to offer life-changing services such as affordable and transitional housing, permanent housing with supportive services, immigration legal help, refugee



Estelle Dorgan, Catholic Charities outreach worker, visits an elder in 1955.

aid, family support, case management, food and more.

Catholic Charities' 2024 Annual Appeal is held in parishes throughout the archdiocese the weekend of May 4th and 5th. Please find our appeal brochure in your pews, bulletin, or vestibule.

Natalie Wood
Executive Director



Toni Tuski of Kenton Women's Village and Fran Smith of Holy Redeemer Parish meet, 2023.

WAYS TO SUSTAIN THE TRADITION



Return the envelope provided in our appeal brochure to your parish, or



Mail the pre-addressed envelope with your gift to Catholic Charities; 2740 SE Powell Blvd. #1 Portland, OR 97202; or



Make your secure online donation at <https://give.catholiccharitiesoregon.org/give/565776/#!/donation/checkout> or scan the QR code at right.



RECYCLING PROGRAMS AT THE MADELEINE

Marked collection bins in the breezeway facing 23rd Ave.

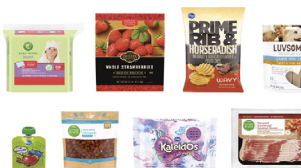
The Madeleine's Laudato Si' Circle and Care for Creation Ministry have joined with U. S. based recycler, Terracycle, to offer our parish, school, and community opportunities to responsibly recycle specific items (primarily plastics) not generally handled at curbside. Terracycle has added more manufacturers to its program, and in turn, we have expanded our recycling offerings. Here is a current listing of what we are collecting. Please keep this in mind:

- ▶ Do not include garbage or items not specifically mentioned in the descriptions.
- ▶ Empty containers of contents. No need to wash first; ensure packaging is dry.



KROGER FLEXIBLE PLASTICS

All Kroger brand flexible plastic packaging can now be accepted. Includes Private Selection and Simple Truth brands as well.



HAIR CARE APPLIANCES AND TOOLS

All types and brands of hair care tools and appliances, including hair dryers, straightening irons, curling irons, thermal brushes and mini tools.



SWIFFER REFILLS

Swiffer only brands of Sweeper™ Dry, Wet, and XL Refills, WetJet Refills™, and Duster™ Refills.



LATE JULY® SNACKS

All Late July® snack packaging as seen in these examples. Limited to Late July brand only.



GILLETTE® AND VENUS RAZORS AND RAZOR BLADES

All brands of blades and razors (systems and disposable units, and replaceable-blade cartridge units), rigid plastic packaging, and flexible plastic bag packaging.



ORAL CARE PRODUCTS

All brands of used or empty oral care products, including toothpaste tubes, tooth brushes, and dental floss containers.



FABRIC CARE PRODUCTS & PACKAGING

From Tide, Gain, Downy, NBD and Dreft, including plastic components (dispensing cup, bag, nozzle, nozzle clip), and plastic packaging wrap, flexible plastic bags, rigid plastic tubs and lids, and Tide To Go pen.



CIGARETTE BUTTS, SANTA FE NATURAL TOBACCO COMPANY

All brands of fully extinguished cigarettes (and ashes) and tobacco products, including filters, plastic packaging, inner foil packaging, rolling paper, and loose tobacco pouches.



AIR CARE PRODUCTS AND PACKAGING AND MR. CLEAN DEEP CLEANING MIST

All brands of air and home cartridges, air and home care plugs, air and home care trigger heads, and air and home care plastic and film packaging. No aerosol containers. Remove as much of remaining product as possible.



USED SOCKS (ALL BRANDS)

Used clean socks only; pairs and singles are accepted. Not meant for new sock donations. No stockings, tights, or pantyhose.



REDYPER DISPOSABLE DIAPERS (Offsite subscription service)

Subscription service for purchasing and recycling Redyper brand disposable diapers through Terracycle

Details on all programs at www.themadeleine.edu/terracycle



Timmco
INSURANCE

Brian Timm
Susan Ames | Derek Ames

1615 NE Broadway | 503-288-8818
www.timmco.com

AUTO | HOME | BUSINESS | LIFE

TIM WALTERS

Principal Broker



The most trusted name in Real Estate!

Committed to the NE Portland

Neighborhoods since 1991



503-545-1880 | TimWaltersRealtor@Gmail.com | TimWaltersPc.com

ANNE C. STEINER
ESTATE PLANNING
ELDER LAW ATTORNEY

503.946.8361 • 1915 NE Cesar Chavez Blvd.
PARISHIONER - anne.c.steiner@gmail.com

WILLS - TRUSTS - PROBATE
GUARDIANSHIP - CONSERVATORSHIP

JOHN M. WYNN
ATTORNEY AT LAW
McGill, Kapranos & Wynn
Parishioner

Hollywood Professional Center, 3939 NE Hancock St., Ste. 305
jmwpxd@qwestoffice.net • 503-287-7333



**ADVERTISE YOUR
BUSINESS HERE!**

Various sizes available.

Contact Rich Hammons
bulletin@themadeleine.edu

JOSÉ MESA AUTO WHOLESALE, LLC

"The mobile auto dealer who is always in your neighborhood."

YOUR DISCOUNT AUTO RETAILER SINCE 1992!

sales@josemesa.com 503-789-0438 www.josemesa.com

NEW • USED • BUY • SELL • LEASE • TRADE • CONSIGN • BROKER • APPRAISE

**ADVERTISE YOUR
BUSINESS HERE!**

Contact Rich Hammons
bulletin@themadeleine.edu



Dr. John R. Lewis

Beaumont Vision

4331 NE Fremont St

Ph: 503-331-3937

*Beaumont Vision:
providing full-
service eyecare
for all ages,
including com-
prehensive
exams, glasses
and contacts*

*Stop by to view our unique
eyewear
Most insurances accepted*

DDI benefits

**MEDICARE QUESTIONS?
WE CAN HELP!**

Medicare can be complicated,
but we can provide free unbiased
information and help navigate
the process to find just the right
solution for you.

Emmett Dooney, '11
Licensed Medicare Agent

503.206.4080

medicare@ddibenefits.com



BUY OR SELL



**OUR TEAM
CAN HELP!**

Opt.
REAL ESTATE

JEFF KERSTEN
REALTOR®
503.720.9179
jeff@theopt.com

Retrouvaille

A Christian Peer Ministry
A LIFELINE FOR
HURTING MARRIAGES

Is your marriage tearing
you and your family apart?

Weekends held 3 times per year in Oregon

www.helpourmarriage.com
503-704-7382

Donated by Kevin & Carol McMenamin

Maria Fitzgerald

REAL ESTATE BROKER
WINDERMERE REALTY TRUST
503-680-9737

Madeleine Mom & Parishioner



**maria
fitzgerald**
finding the home that fitz you...



Sweetly Aimee, LLC
Custom Wedding and All-
Occasion Cakes and Desserts

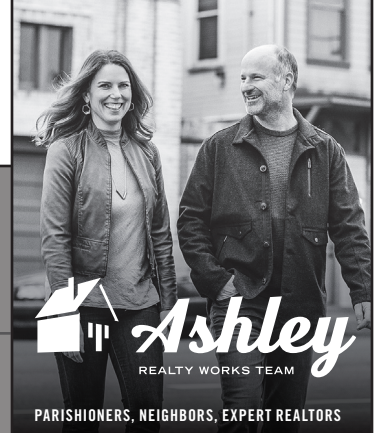
Aimee Holzschuh
Parishioner & Parent
503.998.7368

www.SweetlyAimee.com



PAUL MYERS, Ph.D., LLC
PSYCHOTHERAPY, COUNSELING
& CONSULTING SERVICES

(503) 381-6685 paulmyersphdpdx@gmail.com
www.paulmyersphdpdx.com



PARISHIONERS, NEIGHBORS, EXPERT REALTORS

Wick & Karoline Ashley
karoline@ashleyrealtyworks.com
(503) 819-4851
237 NE Broadway Suite 100

RE/MAX
equity group

**ADVERTISE
YOUR
BUSINESS
HERE!**

Contact Rich Hammons
bulletin@themadeleine.edu



James M Jones

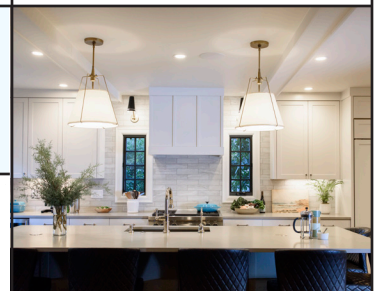
Financial Advisor, CFP®

Parishioner

Direct 503.284.9200

Office 503.7470306

jjmj@wfinadv.com



Whole house remodels
• Kitchens • Bathrooms
• Basements • Additions
In-house architecture & design

Nathalie Roloff, Parishioner

503.245.0685
roloffconstruction.com
4300 NE Fremont #130

CCB #140721
WA#ROLOFC1873KU



Bulletin Advertising: Contact Rich Hammons • bulletin@themadeleine.edu • 503-281-5777

T.C. O'LEARY'S

a little irish

PUB

2926 NE Alberta Street

A little taste of Ireland!
www.tcolearys.com



Parishioners Tom, Siobhan
& Aine O'Leary

THEORY
MORTGAGE

Beating Banks Daily

Brian DuVal
503-850-7667

NMLS 5912, NMLS 1848246