

# THIS WEEK AT THE MADELEINE

Furthering the Reign of God, Where All Are Welcome • April 13–14, 2024

## PRAY FOR OUR CONFIRMANDI

This weekend, 11 youth from The Madeleine community will be confirmed into the Catholic Church by Bishop Peter Smith in a Mass at St. Ignatius.

Special thanks to our catechists Therese Fenzl, Trieu Nguyen, Siobhan O'Malley and Christi Bohmbach, for preparing our youth for this important sacrament.

### 2024 Madeleine Confirmandi

- ▶ Violet Bahena Sanchez
- ▶ Ronin McCormick
- ▶ Clare Marie Moran
- ▶ Henry Mumm
- ▶ Noe Rogers
- ▶ Zachary Resch
- ▶ Alex Resch
- ▶ Ethan Shoemaker
- ▶ Mason Slaughter
- ▶ Caitlin Carrow
- ▶ Maria Isabel Rodriguez

## MAY CROWNING AND CAMPUS PLANTING

Wednesday, May 1 • Planting 9 am–2 pm • Crowning at 2:30 pm

May 1 is a special day in the Catholic Church, a day when we celebrate Mary, Mother of God with a May Crowning. This year, our school students, parents and parishioners are invited to make May 1 even more special with our Campus Planting event.

The Madeleine campus is known for its beauty, and it takes much work to keep it up. This year, we are asking everyone to help us transition many of the areas to perennials and lower-maintenance native plants as recommended by horticulturist Annalise Michaelson.



### Campus Planting: 9 am–2 pm

For the planting portion of the day, drop in anytime between 9:00 am and 2:00 pm. School students will take class time to plant throughout the day on the school areas of campus, then parishioners and parents can work on areas around the Parish Hall and church. Bring your own trowel, gloves and kneepads, and stay as long as you want!

**Crowning at 2:30 pm**—Then, to cap off the day, we will have a May Crowning ceremony in front of the Parish Hall. Please join us for all or part of the day!

## CELEBRATE MOTHERS ON MOTHERS DAY!

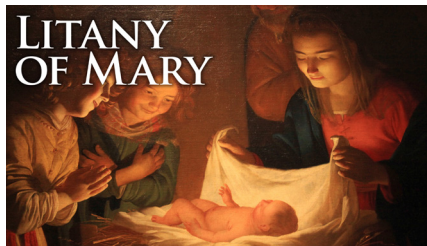
Upload mother & child photos to [www.themadeleine.edu/mothers](http://www.themadeleine.edu/mothers)

A May tradition at The Madeleine: celebrating the Month of Mary and Mother's Day in a special way!

Mother's Day weekend May 11–12, we will show a slideshow of mothers and children sent in from The Madeleine Community. The photos will show both in the church at all Masses and on our livestream.

### We are starting over—all new photos!

This year, again, we're making a fresh start, a blank canvas. So even if you've sent



us a photo before, please send a new one this year.

Submissions can be either a photo of mother and child (children), or a photo of mothers and their mothers. Please send us just one photo

of a mother/child combo per family grouping, as we want to have time to show all our photos.

### Send photos by May 7

Upload your photos to our website at [www.themadeleine.edu/mothers](http://www.themadeleine.edu/mothers)

## 2024 Archbishop's Catholic Appeal begins this weekend.

See letter from Archbishop Sample on Page 4.

## Third Sunday of Easter

CELEBRATING EASTER IS MORE THAN BELIEF; it involves action on our part. If we really believe that Christ is risen and among us, it will be reflected tangibly in how we live. It may be expressed differently in each of us, but it will be evident. Luckily, his final words to us are about repentance and forgiveness, so we don't need to be perfect. But if we truly believe, those who encounter us will know it.

### PRAY FOR OUR FAITHFULLY DEPARTED

- ▶ Lois Sykes
- ▶ William Dooris
- ▶ Connee O'Leary

### PRAYER REQUESTS

For those who are ill, or in need of our prayers

- ▶ Karen Shoop
- ▶ Chris Nieman
- ▶ Corinne Jordan
- ▶ Naomi Robbins
- ▶ Nicholas LaCrosse
- ▶ Fr. John McGrann
- ▶ Charli Phipps

### MASS INTENTIONS

- 04/13, Sat ..... Andy Pinkowski †
- 04/14, Sun, 8:00 am .The Madeleine Community
- 10:00 am ..... Holy Names Sisters
- 04/16, Tues .....Debbie Barsotti †
- 04/17, Weds ..... Howard Hedinger †
- 04/18, Thurs ..... Madeleine Birthdays in April
- 04/19, Fri ..... Carter Whitlach
- 04/20, Sat ..... Alan Morrill †
- 04/21, Sun, 8:00 am .The Madeleine Community
- 10:00 am ..... Sally Hickman †

### APRIL BIRTHDAYS

Happy birthday to some honored parishioners

- ▶ Margaret Marshall
- ▶ Louise Carman
- ▶ John Faherty
- ▶ Richard Feeney
- ▶ Suzanne Shanklin
- ▶ Vivian Ripp
- ▶ Manus O'Donnell
- ▶ Patt Seeronen
- ▶ Elizabeth Lee
- ▶ Miltie Lloyd
- ▶ Gregory Mistell

# Calendar This Week

## SUNDAY, APRIL 14

8:00 am: Mass—Church  
 10:00 am: Children's Liturgy—Fireside Rm  
 10:00 am: First Eucharist Class—Library  
 10:00 am: Mass—Church  **ALSO LIVESTREAMS**  
 11:15 am: RCIA—Fireside Room  
 2:00 pm: Northwest Piano Trio—Old Madeleine Church  
 7:00 pm: Karen Wagner Spring Recital—Old Madeleine Church

## MONDAY, APRIL 15

6:30 pm: FA Meeting—Fireside Rm

## TUESDAY, APRIL 16

► Nourish Our Neighbors (NON)-3rd Grade  
 8:00 am: Mass—Church  
 9:00 am: Adoration—Church  
 6:30 pm: Book Club—Fireside Rm

## WEDNESDAY, APRIL 17

8:00 am: Mass—Church  
 2:40 pm: Children's Choir Rehearsal—Church  
 7:00 pm: Madeleine Choir Rehearsal—Church

## THURSDAY, APRIL 18

10:00 am: Book Club—Fireside Rm  
 2:00 pm: Mass—Church  
 6:30 pm: SAC—Library

## FRIDAY, APRIL 19

8:00 am: Mass—Church  
 6:00 pm: Fish Fry—Parish Hall

## SATURDAY, APRIL 20

4:00 pm: Confession—Church  
 5:00 pm: Mass—Church

## SUNDAY, APRIL 21

8:00 am: Mass—Church  
 9:00 am: E-Waste Collection—Parish Hall Driveway  
 10:00 am: Mass—Church  **ALSO LIVESTREAMS**  
 10:00 am: First Eucharist Class—Fireside Rm  
 11:30 am: RCIA—St. Catherine Room  
 3:00 pm: Tals Hurwitz—Old Madeleine Church

### SAVE THE DATE

- **Fish Fry:** April 19
- **E-Waste Recycling:** April 21
- **Crowning of Mary/Parish Planting:** May 1
- **Wine Tasting:** September 7
- **The Madeleine Auction:** November 16
- **Madeleine Marketplace:** December 5

## PARISH LIFE

# MINISTERS OF HOSPITALITY NEEDED

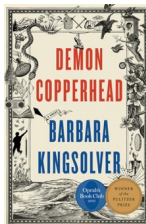
Training opportunities available during May and June

Looking for a new ministry opportunity? The Hospitality Ministry is inviting families, couples, and individuals to consider joining the Hospitality team. We have the joy of greeting those who come through the door for Mass as well as providing service during the Mass (such as helping with the Presentation of the Gifts and taking

up the collection). We try to honor Mass preferences (only 8 am Mass, for example) and frequency of service (every week or just once a month). We are offering short 'training' opportunities during the months of May and June. Interested? Contact Christi Bohmbach at [c\\_bohmbach@yahoo.com](mailto:c_bohmbach@yahoo.com) or 503-206-1900.

## MADELEINE BOOK CLUB

Do you love reading a variety of books like we do? Would you enjoy opportunities to meet with other parishioners and friends to discuss the works of some very excellent authors? If so, you are most cordially invited to join our group. We are currently reading Pulitzer Prize winning novel *Demon Copperhead*, by Barbara Kingsolver to be discussed April 16 and 18. For further information, please contact our MBC ministry coordinator Gretchen Stevenson, [gypsyfrau47@yahoo.com](mailto:gypsyfrau47@yahoo.com) or 503-312-6834.



## ADORATION: JESUS, BE OUR SOUL'S SPRING

A prayer by English poet and mystic Caryl Houselander, in a booklet from Sophia Institute Press, "The Essential Rosary," captures the Resurrection's incomparable hope, and reveals the poet's deep devotion to the Eucharist:

"Seed of Eternal Life,/ sown by love's flowering/ in the heavy clay of our hearts,/ rise in us;/ be our soul's spring./ By the risen feet of Christ,/ walking upon the delicate grass;/ by the wakened hands of Christ,/ touching the cool petals of flowers;/ by the opened eyes of Christ,/ looking with joy/ on all created things;/ teach us to wonder,/ and to walk upon the earth/ aware of earth's loveliness,/ aware of the Being of God/ in all that is.

*Tuesday Adoration begins after the 8 am Mass, ends at 2 pm.*

## GUEST PRIEST APRIL 20-21

Fr. William Sokolowski, Food for the Poor

Father William R. Sokolowski will be presiding at Masses to speak on behalf of Food for the Poor during the weekend of April 20-21. His messages are intended to bring the gospel to life in today's hurting world.

Founded in 1982, Food For The Poor works to end the suffering of impoverished children and families in the Caribbean and Latin America.

“With the Resurrection of Jesus, evil has lost its power and our failures cannot prevent us from starting anew. Death has become a gateway to the beginning of new life.”

—Pope Francis via X (Twitter) @pontifex



## Upcoming Concerts

**OC** = Old Madeleine Church    **MC** = Main Church

- **April 21, 3:00 pm OC** • CDZ Collegium Musica • Classical Guitarist Tal Hurwitz
- **April 30, 7:00 pm OC** • Classical Up Close Chamber Music Concert • Free
- **May 4, 2:00 pm OC** • CDZ Collegia Musica • Guitarist Dragos Ilie • [cdzcollegiummusica.org](http://cdzcollegiummusica.org)
- **May 5, 3:00 pm OC** • Bravo! Northwest • Rhapsody In Blue • [bravoconcerts.com](http://bravoconcerts.com)
- **May 23, 7:00 pm OC** • 45th Parallel • Leo Eguchi Unaccompanied • [45thparallelpdx.org](http://45thparallelpdx.org)



**In this Sunday's Gospel, Jesus explains the meaning of the scriptures.** Like the disciples, when we offer and receive forgiveness our hearts burn because we encounter the risen Christ within us. Have you considered answering the call to "help the poor find forgiveness and healing in their life" by joining the Society of St. Vincent de Paul?  
 —Mary Clare O'Brien, 503-309-7639



## PARISH LIFE

### FAMILY ACTIVITIES FROM THERESE FENZL

Dear Madeleine Families,

In the Gospel this Sunday we hear the Risen Jesus once more offering the disciples "Peace." And to reassure them that it is truly Him, He allows them to touch Him as well as eat fish with Him.

I invite you this week to set aside a few minutes to sit together as a family and allow the Risen Jesus to say "Peace" to you, to your family. Then pray together this Psalm: *We rest in You, O God, we are safe in Your keeping, our bodies and souls are held in peace. Our hearts cry out to You, Our God. All that upsets us You see. Here in Your Presence we are fully known. We are wrapped in Your grace, held in Your Peace. Our hearts turn to thankfulness*

and joy. We have more than enough. You, Lord, are everything to us. Amen. (Adapted from Psalm 4 in Let's Say a Psalm by Silvia Purdie)

Add a Hail Mary for peace in our country and world.

### CATHOLIC FRIENDSHIP GROUP

Catholic Friendship Group is for single Catholics ages 40 to 60 throughout the Archdiocese of Portland who are looking to grow in faith and fellowship. We meet every other week from 7:00–8:30pm at St. Birgitta's, 11820 NW St. Helens Rd. More info, and our 2024 slate of topics at [www.catholicfriendshipgroup.com](http://www.catholicfriendshipgroup.com). Topic for April 26th is "Development of Dogma."

## EASTER GIVING: CAN YOU HELP?

Donate online at [www.themadeleine.edu/easter-giving](http://www.themadeleine.edu/easter-giving)

One of our biggest collections of the year is typically Easter Sunday. Each year we budget for an Easter collection that is in addition to the Sunday collection. Some parishioners account for Easter collections in regular online or automated giving. But if you are not among those who do, we'd very much appreciate if you would consider an additional Easter gift.

Three easy ways for you to help:

► **Envelope**—If you have an Easter envelope, mail to the parish office or drop it off, or bring it to Mass.

► **Online**—Visit our online giving page at [www.themadeleine.edu/easter-giving](http://www.themadeleine.edu/easter-giving) where you can make a secure, convenient online donation.



► **Electronic Transfer**—If you are making stewardship donations via electronic transfer, contact My Schoning in our business office to arrange an additional payment.

Thank you for your loyal support.

## WEEKLY MASS TIMES

### Regular Mass Times:

Tuesday, Wednesday, Friday . . . . . 8:00 am  
Thursday . . . . . School days: 2:00 pm  
Days school not in session: 8:00 am  
Saturday Vigil . . . . . 5:00 pm  
Sunday . . . . . 8:00 am, 10:00 am

**Penance** . . . . . Saturday, 4:00–4:40 pm  
**Adoration** . . . . . Tuesdays, 9:00 am–2:00 pm

## PARISH OFFICE

**Hours** . . . . . Monday–Friday, 9:00 am–3:00 pm  
**Phone:** 503-281-5777 . . . . . **Fax:** 503-281-0673  
**School Office** . . . . . 503-288-9197

## PARISH STAFF

- Rev. Bonaventure Rummell**—Administrator  
[fatherbonaventure@themadeleine.edu](mailto:fatherbonaventure@themadeleine.edu) . . . ext. 111
- Deacon Mike O'Mahoney**—Permanent Deacon  
[deaconmike@themadeleine.edu](mailto:deaconmike@themadeleine.edu)
- Tresa Rast**—School Principal  
[trast@themadeleine.edu](mailto:trast@themadeleine.edu) . . . . . 503-288-9197
- Darlene Maurer**—Pastoral Assistant  
[dmaurer@themadeleine.edu](mailto:dmaurer@themadeleine.edu) . . . . . ext. 125
- My Schoning**—Business Manager  
[mhoang@themadeleine.edu](mailto:mhoang@themadeleine.edu) . . . . . ext. 118
- Linda Scheurman**—Bookkeeper  
[lscheurman@themadeleine.edu](mailto:lscheurman@themadeleine.edu) . . . . . ext. 119
- Therese Fenzl**—Director of Spiritual Ministries  
[tfenzl@themadeleine.edu](mailto:tfenzl@themadeleine.edu) . . . . . ext. 116
- Maria Manzo**—Director of Music  
[mmanzo@themadeleine.edu](mailto:mmanzo@themadeleine.edu) . . . . . ext. 113
- Guy Allen**—Facilities Manager, Events Manager  
[gallen@themadeleine.edu](mailto:gallen@themadeleine.edu)
- Janeen Reilly**—Parish Administrator  
[jreilly@themadeleine.edu](mailto:jreilly@themadeleine.edu) . . . . . ext. 110
- Gretchen Stevenson**—Office  
[gstevenson@themadeleine.edu](mailto:gstevenson@themadeleine.edu) . . . . . ext. 112
- Julie Kupers**—Special Events  
[jkupers@themadeleine.edu](mailto:jkupers@themadeleine.edu) . . . 720-936-5635
- Rich Hammons**—Director of Communications  
[rhammons@themadeleine.edu](mailto:rhammons@themadeleine.edu) . . . . . ext. 129

## SACRAMENTS

- Funerals, Infant Baptism**—  
Darlene Maurer . . . . . ext. 125
- Marriages, Anointing of the Sick**—  
Fr. Bonaventure Rummell . . . . . ext. 111
- First Reconciliation, First Eucharist**—  
Rose Horton . . . [sac-prep@themadeleine.edu](mailto:sac-prep@themadeleine.edu)
- RCIA**—Donna Mason, [rcia@themadeleine.edu](mailto:rcia@themadeleine.edu)
- Confirmation**—Therese Fenzl . . . . . ext. 116

## COUNCILS & CONTACTS

- Pastoral Council**—Amy Moran . . 617-470-7926
- Finance/Admin**—John Garrow . . 503-803-5693
- Buildings & Grounds**—Erin Couch . . 503-281-9575
- School Advisory**—Tim Resch . . . . . 503-984-4607
- Facility Requests**—[themadeleine.edu/facilities](http://themadeleine.edu/facilities)
- Maintenance Requests**—My Schoning  
[mhoang@themadeleine.edu](mailto:mhoang@themadeleine.edu) . . . . . ext. 114
- Knights of Columbus**—  
Dan O'Donnell . . . . . 503-440-9415
- Ministry Schedule**  
[www.themadeleine.edu/minister-schedule](http://www.themadeleine.edu/minister-schedule)
- Bulletin submissions due 5:00 pm Tuesday**  
Email to [bulletin@themadeleine.edu](mailto:bulletin@themadeleine.edu)

CDZ Collegium Musica presents

## TALS HURWITZ

Internationally acclaimed  
classical guitarist

Saturday, April 21, 3:00 pm  
The Old Madeleine Church

Bach, Barrios, Villa-Lobos  
and more!

Free community program.

Donations to NPO appreciated.





My dear Brothers and Sisters,

Praised be Jesus Christ!

As Catholics, we share in a Eucharistic solidarity. You and I share one faith and are united in our one mission, to live and spread the Gospel of Jesus Christ throughout the world. Each one of us is essential to the vitality of our Church, and that Church needs you. Please join me in supporting the vital programs and ministries that we all depend upon to sustain the Catholic Church in Western Oregon by giving to the 2024 Archbishop's Catholic Appeal.

I encourage you to take an envelope with you today (which you can find in your pews or vestibule), and visit **JesusChangesEverything.church**, to view the video to learn more about how your dedicated support grows and sustains the Church. Please embrace this opportunity to demonstrate your commitment to one another and to the mission entrusted to us by Christ. Remember, Jesus changes everything! I am grateful for your support.

In Christ,

Archbishop Alexander Sample



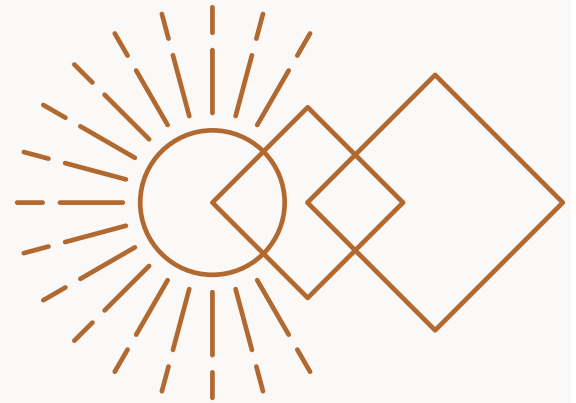
---

MADELEINE PARENTS ASSOCIATION AND  
SAFETY & SECURITY PRESENT

---

# Brave Together

## Practical Tools for Overcoming Childhood Anxiety



**APRIL 25TH, 2024**  
**7PM - PARISH HALL**

---

## Speaker Series Guests

---



**DR. JULIANNA**  
**SAPIENZA**



**KATE DEGENHARDT**  
**PRE-LICENSED**  
**PROFESSIONAL, PHD**

---

We are excited to bring these experts to our school to share information, insights, practical tools, and answer any questions you might have regarding anxiety and children. We hope you will join us for this enlightening evening. You can earn service hour credits for attending. Be sure to log your time.

**CLICK FOR MORE INFORMATION:**

**[DR JULIANNA SAPIENZA](#)**

**[KATE DEGENHARDT](#)**



# FANTASTIC FISH, FAMILY FUN

- Lightly battered fresh fish by TC O'Leary's
- Fish & chips, slaw, lemonade & brownies (pizza for kiddos, too)
- Local Beer & NW Wines available for purchase
- 1 Bingo card included with ticket purchase
- Silent disco! \$5 per headphone
- Live bluegrass band

**TICKETS: [WWW.THEMADELEINE.EDU/FISHFRY](http://WWW.THEMADELEINE.EDU/FISHFRY)**

**KIDS 5 & UNDER EAT FREE**

**ADULT ➤ \$19**

**CHILD ➤ \$12 (10 & under)**





# The Madeleine Care for Creation ANNUAL E-WASTE RECYCLING EVENT

Sunday, April 21 • 9:00 am–1:00 pm

In conjunction with St. Charles, St. Andrew, and Holy Redeemer Parishes, The Madeleine Care for Creation Committee is pleased to announce our annual Earth Day E-Waste Recycling Event. The event is provided at no charge, but donations accepted to help cover costs.

## Green Century Recycling will be on hand to accept the following

- ▶ Computers
- ▶ Laptops
- ▶ TV & Monitors (all types)
- ▶ Hard drives (Secure Data Destruction Provided)
- ▶ Misc. Computer Components (floppy drives, Printed Circuit Boards (PCB), etc.)
- ▶ Cords/Wires/Chargers/Power strips
- ▶ Servers/Switches
- ▶ Routers/Hubs/Modems
- ▶ Networking Devices
- ▶ Communications Equipment
- ▶ POS (Point of Sale equip)
- ▶ Printers/Scanners
- ▶ Fax/Copiers
- ▶ Keyboards/Mice
- ▶ Misc. Office Machines
- ▶ Misc. Electronics
- ▶ VCRs, DVD Players
- ▶ Cable & Satellite Equipment
- ▶ Testing Equipment
- ▶ Stereo/Audio Components
- ▶ Cell Phones (with or without batteries)
- ▶ PDAs, Handheld Games
- ▶ Cameras
- ▶ Telephones
- ▶ Gaming Consoles/Systems
- ▶ UPS (uninterruptible power supply) and other Lead Acid Batteries
- ▶ Small/Large Appliances (which include, microwaves, toasters, blenders, etc.)
- ▶ Electric Power Tools
- ▶ Laptop Batteries, Cell Phone Batteries, Li-on batteries
- ▶ Ferrous & Non-Ferrous Metals
- ▶ Air Conditioners

**GREEN CENTURY RECYCLING**  
PULL THE PLUG ON ELECTRONIC WASTE.



**USED SOCKS—All brands!**  
**Clean, used socks only; pairs and singles are accepted.**  
**Not meant for new sock donations.**  
**No stockings, tights, or pantyhose**

**We will collect worn-out athletic shoes to be ground up and re-purposed**  
(no dress or casual shoes, please)



## The following items will NOT be accepted during this event.



- ▶ **NO!** Styrofoam
- ▶ **NO!** Fluorescent Tubes and lamps (All types)
- ▶ **NO!** Ink/Toner Cartridges
- ▶ **NO!** Household size batteries (AA, AAA, C, D, 9V, etc.)
- ▶ **NO!** Ni-CD & Ni-MH batteries
- ▶ **NO!** Media (CD, DVD, floppy, VHS, Cassette, tapes)
- ▶ **NO!** PCB Ballasts
- ▶ **NO!** Wood
- ▶ **NO!** Electronic & Magnetic Ballasts (Non-PCB only. Must be post 1978)
- ▶ **NO!** Refrigerators, Freezers, most water coolers, some dehumidifiers
- ▶ **NO!** Capacitors
- ▶ **NO!** Fire Extinguishers
- ▶ **NO!** Mercury Containing Devices (Thermostats, Ionization Smoke Detectors)



The Madeleine Parish Hall Driveway  
3123 NE 24<sup>th</sup> Ave., Portland  
[www.themadeleine.edu/ewaste](http://www.themadeleine.edu/ewaste)

IN PARTNERSHIP WITH  
St. Charles  
St. Andrew  
Holy Redeemer  
PARISHES



**Timmco**  
INSURANCE

Brian Timm  
Susan Ames | Derek Ames

1615 NE Broadway | 503-288-8818  
www.timmco.com

AUTO | HOME | BUSINESS | LIFE

**TIM WALTERS**

Principal Broker



The most trusted name in Real Estate!

Committed to the NE Portland

Neighborhoods since 1991



503-545-1880 | TimWaltersRealtor@Gmail.com | TimWaltersPc.com

**NEW ADS  
COMING  
SOON!**

**DDI** *benefits*

Questions about Medicare?  
We can help!

Emmett Dooney, '11  
Licensed Medicare Agent  
503.206.4080  
medicare@ddibenefits.com



**T.C. O'LEARY'S**  
a little irish  
PUB

2926 NE Alberta Street  
A little taste of Ireland!  
www.tcolearys.com



Parishioners Tom, Siobhan  
& Aine O'Leary

**JOHN M. WYNN**

ATTORNEY AT LAW

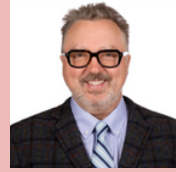
McGill, Kapranos & Wynn  
Parishioner

Hollywood Professional Center, 3939 NE Hancock St., Ste. 305  
jmwpxd@qwestoffice.net • 503-287-7333



**Lance Marrs**

PRINCIPAL BROKER  
503 701 5323  
PORTLAND MODERN REAL ESTATE  
LICENSED IN OREGON  
PORTLANDMODERN.COM



**PAUL MARRS**

MORTGAGE LOAN OFFICER NMLS ID #5212  
503 781 2114  
PAUL.MARRS@PMRLOANS.COM  
PREMIER MORTGAGE RESOURCES NMLS #1169



Premier Mortgage Resources, LLC 1325 NW Flanders St. Portland, OR 97209

**JOSÉ MESA AUTO WHOLESALE, LLC**

"The mobile auto dealer who is always in your neighborhood."

**YOUR DISCOUNT AUTO RETAILER SINCE 1992!**

sales@josemesa.com 503-789-0438 www.josemesa.com

NEW • USED • BUY • SELL • LEASE • TRADE • CONSIGN • BROKER • APPRAISE



**Dr. Phil Doleac, PC**  
Orthodontics for all ages  
www.magic-smiles.com

Beaverton Portland Scappoose  
503.644.7009 503.255.1694 503.543.4488

**BUY OR SELL**

**OUR TEAM  
CAN HELP!**

**Opt.**  
REAL ESTATE

**JEFF KERSTEN**  
REALTOR®  
503.720.9179  
jeff@theopt.com



Dr. John R. Lewis

*Beaumont Vision*

*Beaumont Vision:  
providing full-  
service eyecare  
for all ages,  
including com-  
prehensive  
exams, glasses  
and contacts*

Stop by to view our unique  
eyewear

Most insurances accepted

4331 NE Fremont St

Ph: 503-331-3937

**JOHN W. LOBO  
PAINTING**

Custom Interior & Exterior  
Creative Finishes  
503-969-3337 CCB#89027  
Licensed Bonded Insured



**Sweetly Aimee, LLC**  
Custom Wedding and All-  
Occasion Cakes and Desserts

Aimee Holzschuh  
Parishioner & Parent  
503.998.7368  
www.SweetlyAimee.com

**Retrouvaille**  
A Christian Peer Ministry  
A LIFELINE FOR  
HURTING MARRIAGES

Is your marriage tearing  
you and your family apart?

Weekends held 3 times per year in Oregon

www.helpourmarriage.com  
503-704-7382

Donated by Kevin & Carol McMenamin



**Maria Fitzgerald**  
REAL ESTATE BROKER  
503-680-9737

**maria**  
fitzgerald  
finding the home that fits you...

**ANNE C. STEINER**  
ESTATE PLANNING  
ELDER LAW ATTORNEY

503.946.8361 • 1915 NE Cesar Chavez Blvd.  
PARISHIONER - anne.c.steiner@gmail.com

WILLS - TRUSTS - PROBATE  
GUARDIANSHIP - CONSERVATORSHIP

**PAUL MYERS, Ph.D., LLC**  
PSYCHOTHERAPY, COUNSELING  
& CONSULTING SERVICES  
(503) 381-6685 paulmyersphdpdx@gmail.com  
www.paulmyersphdpdx.com

**THEORY**  
MORTGAGE

Beating Banks Daily

Brian DuVal  
503-850-7667

NMLS 5912, NMLS 1848246

**Ashley**  
REALTY WORKS TEAM

PARISHIONERS, NEIGHBORS, EXPERT REALTORS

Wick & Karoline Ashley  
karoline@ashleyrealtyworks.com  
(503) 819-4851  
237 NE Broadway Suite 100

**RE/MAX**  
equity group

**Mark McGinnis**

Parishioner, Parent  
Mortgage Advisor

NMLS 98586

503-348-4917

"It's about service!"

mark.mcginis@neohomeloans.com



**WILLAMETTE**  
FINANCIAL ADVISORS, LLC  
PERSONALIZED ADVICE FROM TRUSTED ADVISORS

**James M Jones**

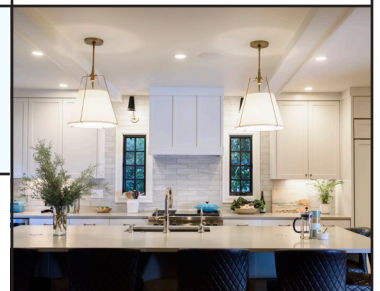
Financial Advisor, CFP®

Parishioner

Direct 503.284.9200

Office 503.7470306

jimj@wfinadv.com



Whole house remodels  
• Kitchens • Bathrooms  
• Basements • Additions  
In-house architecture & design

Nathalie Roloff, Parishioner

503.245.0685  
rolloffconstruction.com  
4300 NE Fremont #130



CCB #140721  
WA#ROLOFC1873KU

Bulletin Advertising: contact Rich Hammons • bulletin@themadeleine.edu • 503--281-5777