



# THIS WEEK AT THE MADELEINE

Furthering the Reign of God, Where All Are Welcome • February 10–11, 2024



## A Change of Heart

Lent, Triduum & Easter at The Madeleine

### Communal Penance

Thursday, Feb. 29 † 6:30 pm • Main Church

In preparation for Lent and Easter. Several priests will be on hand to hear your confession.

### Ash Wednesday

Wednesday, February 14 • Main Church

† 9:00 am (School Mass) † 6:30 pm

► Mass and distribution of ashes.

### Stations of the Cross

Fridays, Feb. 16, 23, March 1, 8, 15, 22

† 11:30 am • Main Church

### Adoration

Tuesdays, Feb. 20, 27, March 5, 12, 19, 26,

9:00 am–2:00 pm

### Gospel Vespers

Sunday, February 25 † 6:30 pm • Old Church

The Madeleine Parish Choir & St. Andrew's Gospel Choir; traditional Catholic Evening Prayer with Gospel music.

### Horticulturist Annalise Michaelson

Thursday, March 7 † 6:30 pm • Old Church

"Consider the Lilies: Native Plants for Wildlife and Devotion." Annalise will introduce the best low-maintenance native plants for Portland gardeners, explain their connections to local wildlife and indigenous peoples, and share some thoughts on their spiritual significance for contemplation during Lent.

### St. Patrick's Day Dinner

Saturday, March 9 † 6:00 pm • Parish Hall

Sponsored by the Knights of Columbus; an annual favorite with great food and an evening of authentic Irish dance.

### An Evening of Celtic Song and Prayer

Thursday, March 14 † 6:30 pm • Old Church

Join The Madeleine Parish Choir in an evening of beautiful prayer, story, and song in the Celtic tradition.

### Passion (Palm) Sunday

Sat., March 23 † 5:00 pm • Sunday, March 24

† 8:00 am & 10:00 am

Please gather 15 minutes prior to start time in the Parish Hall and join the procession into the church.

### Chrism Mass

Monday, March 25 † 6:30 pm • St. Mary's Cathedral

### Tenebrae

Friday, March 29 † Noon • Old Church

A beautiful liturgy that meditates on Christ's suffering

### Lenten Reflections books!

Pick up yours at Masses or download at [www.themadeleine.edu/lent](http://www.themadeleine.edu/lent)



## Sixth Sunday in Ordinary Time

THERE IS OFTEN NO ESCAPE from illness. And, sometimes an illness is considered socially unacceptable and those afflicted cannot escape the injustice and the judgement that can accompany the condition. Today's readings focus on leprosy, but they could be about any disease or condition that evokes fear, alienation or condemnation. Those who suffer are urged to turn to God for healing. All of us are called to imitate Jesus, who throughout his life, embraced and healed the sick and outcast. It is a hard challenge to ignore and an even harder one for many of us to accept.

### PRAY FOR OUR FAITHFULLY DEPARTED

- Donald Dunbar
- Bernie Fagan
- Connie Marbott

### PRAYER REQUESTS

For those who are ill, or in need of our prayers


- Virginia Henry
- Nicholas Lacrosse
- Dick Feeny
- Chris Mealy
- Bill Stevenson
- Jane Lecher
- Fr. John McGrann

### WORSHIP & PRAYER

- 02/13, Tues. . . . . Mathew Cullen †
- 02/14, Weds, 9:00 am . . . . . Fr. Mike Biewend
- 6:30 pm . . . . . Mary Prusso
- 02/15, Thurs. . . . . Madeleine Birthdays in February
- 02/16, Fri . . . . . Samuel Wesley Kerns †
- 02/17, Sat . . . . . John & Mary Carnell Plishka †
- 02/18, Sun, 8:00 am .The Madeleine Community
- 10:00 am . . . . . Joe Diehl †

# Calendar This Week

## SUNDAY, FEBRUARY 11

- ▶ Catholic Home Missions Collection
- 8:00 am: Mass—Church
- 10:00 am: Children’s Liturgy—Fireside Rm
- 10:00 am: Mass—Church  **ALSO LIVESTREAMS**
- 3:00 pm: Bravo Concert—Old Madeleine Church

## MONDAY, FEBRUARY 12

- 3:15 pm: Parents Assn. Bake Sale
- 6:30 pm: FA Meeting—Fireside Rm

## TUESDAY, FEBRUARY 13

- Nourish Our Neighbors—Kindergarten
- 8:00 am: Mass—Church
- 9:00 am: Adoration—Church
- 3:15 pm: Parents Assn. Bake Sale
- 7:00 pm: Parents Club—Library

## WEDNESDAY, FEBRUARY 14

- ▶ Ash Wednesday
- ▶ Central & Eastern European Church Collection
- 9:00 am: Ash Wednesday (School) Mass—Church
- 6:30 pm: Ash Wednesday Mass—Church
- 7:30 pm: Madeleine Choir Rehearsal—Church

## THURSDAY, FEBRUARY 15

- 8:00 am: Mass—Church
- 6:00 pm: School Science Night—Parish Hall
- 6:30 pm: SAC—Library

## FRIDAY, FEBRUARY 16

- 8:00 am: Mass—Church
- 11:30 am: Stations of the Cross—Church

## SATURDAY, FEBRUARY 17

- 4:00 pm: Confession—Church
- 5:00 pm: Mass—Church
- RCIA Rite of Signing/Sending

## SUNDAY, FEBRUARY 18

- 8:00 am: Mass—Church
- 10:00 am: Family Mass—Church
-  **ALSO LIVESTREAMS**
- 11:00 am: Knights of Columbus Pancake Breakfast—Parish Hall
- 11:00 am: RCIA—St. Catherine Room
- 2:00 pm: CDZ Collegium Musica Concert—Old Madeleine Church
- 2:00 pm: RCIA Rite of Election—Cathedral

### SAVE THE DATE

- ▶ **Ash Wednesday, Lent Begins:** February 14
- ▶ **St. Patrick’s Dinner:** March 9
- ▶ **Palm Sunday:** March 24
- ▶ **Easter Sunday:** March 31
- ▶ **Fish Fry:** April 19
- ▶ **Wine Tasting:** Postponed to September 7
- ▶ **Madeleine Marketplace:** December 5

# PARISH LIFE

## DEEPEN YOUR LENTEN EXPERIENCE BY JOINING A FAITH SHARING GROUP!

Zoom or in-person groups available

We are forming small faith sharing prayer groups. Using guided materials and questions, prayer groups usually meet weekly in homes, in the parish or on Zoom during the Lenten season. They provide an outstanding opportunity to get to know and share with other parishioners, and to

deepen your Lenten experience in Christ. Sign-up sheets are available in the back of the church through Sunday, February 11th. If you do not get an opportunity to sign up, or if you have questions, please contact Dave Albertine via email. davea51@gmail.com All our welcome!!

## PARISH OFFERTORY UPDATE

### January 2024 Collection

Budgeted Offertory, full month . . . . . \$80,250  
Collected Offertory, full month . . . . . \$71,987

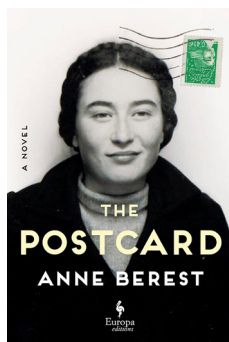
### Fiscal Year 2023–24 Collection

Budgeted Offertory, year to date . . . . . \$603,660  
Collected Offertory, year to date . . . . . \$494,381  
Offertory Surplus (deficit) . . . . . (\$109,279)

## MADELEINE BOOK CLUB

Do you love to read? Would you enjoy opportunities to meet with other parishioners and friends to share in genial discussion/debate over the contents of some very excellent books?

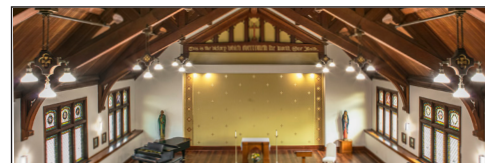
If so, you are most cordially invited to join our group. There is still plenty of time to read *The Postcard*, by Anne Berest before our mid-February meeting. For further information or to be added to our email list, please contact our MBC ministry coordinator: Gretchen Stevenson, gypsyfrau47@yahoo.com or 503-312-6834.



## ADORATION: HELP FOR THE HOPELESS

A soul-searching prayer by Saint Padre Pio for meditation after Holy Communion, “Stay With Me, Lord,” can help with Adoration as well. “Stay With Me, Lord,” the saint begins, “for it is necessary to have you present so that I do not forget You. You know how easily I abandon You./ Stay with me, Lord, because I am weak and I need your strength, that I may not fall so often./ Stay with me, Lord, for You are my life, and without You, I am without meaning and hope . . . .” Our Divine Physician is always listening, ready to help us battle moments of feeling empty, weak, and hopeless.

*Tuesday Adoration begins after the 8 am Mass, ends at 2 pm.*



## Upcoming Concerts

OC=Old Madeleine Church MC=Main Church

- ▶ **Feb. 11, 3:00 pm OC** • Bravo! Concerts Northwest • Quartet for the End of Time • bravoconcerts.com
- ▶ **Feb. 18, 2:00 pm OC** • CDZ Collegium Musica, Yuri Liberzon, Classical guitar
- ▶ **March 16, 7:30 pm MC** • In Mulieribus • Cycles of Eternity • inmulieribus.org
- ▶ **March 17, 4:00 pm MC** • In Mulieribus • Cycles of Eternity • inmulieribus.org

## THE MADELEINE IS HIRING: EVENT COORDINATORS

Part-time opportunity • Flexible hours

The parish is looking to hire Event Coordinators to assist with use of event rental spaces. Responsibilities include set up and take down of event spaces, maintaining relationships and professionalism with clients, and overseeing the responsibilities of dishwashers and bussers. We are looking for someone who is personable and can maintain a high attention to detail in a fast-paced environment. Hours are flexible and are on an “as needed” basis. Apply or information: My Schoning, mhoang@themadeleine.edu



**In the Gospel today, Jesus moved with pity,** touched the leper and healed him. Let us pray today for the grace to be generous with our gifts to help those who are suffering. With your gift to the Society of St. Vincent de Paul, you indeed put your faith into action as you bring healing to the poor, hungry and weeping.  
—Mary Clare O’Brien, 503-309-7639



## Experiencing Lent at The Madeleine

### ASH WEDNESDAY COLLECTION FOR THE CHURCH IN CENTRAL AND EASTERN EUROPE

As is our annual tradition, our Ash Wednesday collection benefits the Church in Central and Eastern Europe. Your gift makes a difference for those living in former communist countries. Please prayerfully consider how you can support the collection this year. See page 8 of this week's bulletin. [www.usccb.org/ccee](http://www.usccb.org/ccee)

### LENTEN RICE BOWLS

Each Lent, Catholic families across the country unite to put their faith into action through prayer, fasting and almsgiving. Through CRS Rice Bowl, families learn about how our sisters and brothers across the globe overcome hardships like hunger and malnutrition, and how through Lenten alms, we have the power to make the world a better place for all.



Rice Bowls are available in the church beginning Ash Wednesday. Please be generous during Lent, then return them to the church on Holy Thursday.



## ARCHDIOCESE OF PORTLAND IN OREGON

### LENTEN FASTING & ABSTINENCE

**From the Archdiocese:** *Ash Wednesday and Good Friday are obligatory days of fasting and abstinence for Catholics. In addition, Fridays during Lent are obligatory days of abstinence. For members of the Latin Catholic Church, the norms on fasting are obligatory from age 18 until age 59.*

*When fasting, a person is permitted to eat one full meal, as well as two smaller meals that together are not equal to a full meal. The norms concerning abstinence from meat are binding upon members of the Latin Catholic Church from age 14 onwards. Members of the Eastern Catholic Churches are to observe the particular law of their own sui iuris Church. If possible, the fast on Good Friday is continued until the Easter Vigil (on Holy Saturday night) as the "paschal fast" to honor the suffering and death of the Lord Jesus and to prepare ourselves to share more fully and to celebrate more readily his Resurrection.*

## REPENT: A LAUDATO SI' LENTEN EXAMEN FOR DAILY USE

As Lent begins, unfolds, and concludes, view prayer not as an abstract exercise but as a call to action. Prayer is action that grounds our lives spiritually. Let the Creator Spirit guide you as you seek to live this Lenten season more intentionally in the light of Laudato Si'.

We invite you to contemplate these questions across the Lenten season to hear the voice of the Creator Spirit working in and through your life:

1. Where do I hear and see Creation's song? Thank God who created all things, for the gift of Creation, and ask for light so you can hear God's message of love and justice through the beauty of Creation.
2. Where do I hear and see Creation's cry? Review your day and how you

have failed to fully care for Creation. Think about what are some of your ecological sins: the small actions in your daily life such as waste, pollution of all kinds, consumerism, and carbon footprint.

3. Where do I hear and see Creation's call? Seek forgiveness and reconciliation with the Creator and the gift of Creation so that you may recognize yourself as a humble creature created by God to live in harmony with the whole cosmos. Notice where God and Creation may be calling you to act for love and justice.

*Each week of Lent we will publish a different passage from Laudato Si' and a prompt for reflection. Look for it!*

### WEEKLY MASS TIMES

#### Regular Mass Times:

Tuesday, Wednesday, Friday . . . . . 8:00 am  
Thursday . . . . . School days: 2:00 pm  
Days school not in session: 8:00 am  
Saturday Vigil . . . . . 5:00 pm  
Sunday . . . . . 8:00 am, 10:00 am

**Penance** . . . . . Saturday, 4:00–4:40 pm  
**Adoration** . . . . . Tuesdays, 9:00 am–2:00 pm

### PARISH OFFICE

**Hours** . . . . . Monday–Friday, 9:00 am–3:00 pm  
**Phone:** 503-281-5777 . . . . . **Fax:** 503-281-0673  
**School Office** . . . . . 503-288-9197

### PARISH STAFF

**Rev. Bonaventure Rummell**—Administrator  
[fatherbonaventure@themadeleine.edu](mailto:fatherbonaventure@themadeleine.edu) . . . ext. 111  
**Deacon Mike O'Mahoney**—Permanent Deacon  
[deaconmike@themadeleine.edu](mailto:deaconmike@themadeleine.edu)  
**Tresa Rast**—School Principal  
[trast@themadeleine.edu](mailto:trast@themadeleine.edu) . . . . . 503-288-9197  
**Darlene Maurer**—Pastoral Assistant  
[dmaurer@themadeleine.edu](mailto:dmaurer@themadeleine.edu) . . . . . ext. 125  
**My Schoning**—Business Manager  
[mhoang@themadeleine.edu](mailto:mhoang@themadeleine.edu) . . . . . ext. 118  
**Linda Scheurman**—Bookkeeper  
[lscheurman@themadeleine.edu](mailto:lscheurman@themadeleine.edu) . . . . . ext. 119  
**Therese Fenzl**—Director of Spiritual Ministries  
[tfenzl@themadeleine.edu](mailto:tfenzl@themadeleine.edu) . . . . . ext. 116  
**Maria Manzo**—Director of Music  
[mmanzo@themadeleine.edu](mailto:mmanzo@themadeleine.edu) . . . . . ext. 113  
**Guy Allen**—Facilities Manager, Events Manager  
[gallen@themadeleine.edu](mailto:gallen@themadeleine.edu)  
**Janeen Reilly**—Parish Administrator  
[jreilly@themadeleine.edu](mailto:jreilly@themadeleine.edu) . . . . . ext. 110  
**Gretchen Stevenson**—Office  
[g Stevenson@themadeleine.edu](mailto:g Stevenson@themadeleine.edu) . . . . . ext. 112  
**Julie Kupers**—Special Events  
[jkupers@themadeleine.edu](mailto:jkupers@themadeleine.edu) . . . . . 720-936-5635  
**Rich Hammons**—Director of Communications  
[rhammons@themadeleine.edu](mailto:rhammons@themadeleine.edu) . . . . . ext. 129

### SACRAMENTS

**Funerals, Infant Baptism**—  
Darlene Maurer . . . . . ext. 125  
**Marriages, Anointing of the Sick**—  
Fr. Bonaventure Rummell . . . . . ext. 111  
**First Reconciliation, First Eucharist**—  
Rose Horton . . . [sac-prep@themadeleine.edu](mailto:sac-prep@themadeleine.edu)  
**RCIA**—Donna Mason . [rcia@themadeleine.edu](mailto:rcia@themadeleine.edu)  
**Confirmation**—Therese Fenzl . . . . . ext. 116

### COUNCILS & CONTACTS

**Pastoral Council**—Amy Moran . . 617-470-7926  
**Finance Council**—Jim Jones . . . . 503-284-3301  
**Buildings & Grounds**—Erin Couch . . 503-281-9575  
**School Advisory**—Tim Resch . . . . . 503-984-4607  
**Facility Requests**—[themadeleine.edu/facilities](http://themadeleine.edu/facilities)  
**Maintenance Requests**—My Schoning  
[mhoang@themadeleine.edu](mailto:mhoang@themadeleine.edu) . . . . . ext. 114  
**Knights of Columbus**—  
Dan O'Donnell . . . . . 503-440-9415  
**Ministry Schedule**  
[www.themadeleine.edu/minister-schedule](http://www.themadeleine.edu/minister-schedule)  
**Bulletin submissions due 5:00 pm Tuesday**  
Email to [bulletin@themadeleine.edu](mailto:bulletin@themadeleine.edu)

## FAMILY ACTIVITIES FROM THERESE FENZL

Dear Madeleine Families,

This coming Wednesday, Valentine's Day, is also the beginning of Lent. There are many themes that flow through the season of Lent. One of the ways you could make these themes visible in your homes is to set up a small prayer space with these symbols:

- ▶ **A Crucifix:** A reminder of Jesus' great love for us and promise to walk with us in the midst of our sufferings and challenges.
- ▶ **Water:** A reminder of our Baptism  
A prayer to pray over the water:  
*Jesus, may this water remind us of our Baptism and be a blessing for our home, where our dying and rising in You is*

*lived each day of our lives. Bless us, as we sign ourselves with it each day.*

- ▶ **Sand:** A reminder of Jesus' time in the desert ...an invitation to add a little prayer, quiet time in your family life... perhaps an Our Father and Hail Mary for the special intention of world peace.
- ▶ **A candle:** A reminder that Jesus is our Light and calls us to be Light.  
What daily acts of kindness could you add to each day of Lent.

I think God wants to gift us this Lent. How can you be open to the daily gifts God sends your way.

Your families will be remembered specially in my prayers during Lent and I ask you to remember me in your prayers.

## THE KNIGHTS OF COLUMBUS BASKETBALL FREE THROW CHAMPIONSHIP

February 17, 6:30 pm • Madeleine Gym

- ▶ Boys and Girls, Ages 9-14
- ▶ Compete at the Parish level. Winners advance to the District, Regional and National level.
- ▶ Pick up and drop off entry forms at The Madeleine School Office.
- ▶ Competitors must be accompanied by an adult.
- ▶ The Madeleine Council #11682; Contact Dan O'Donnell 503-440-9415.

## TIPS FOR GREEN LIVING

When planning your weekly meals, choosing fresh foods is not only beneficial for your body, but also for the Earth. We do not always think about it, but generally, a great deal of energy (and greenhouse gases) gets wasted in producing frozen meals and over-packaged foods. If you are used to buying prepared foods and meals, why not try to make meals with fresh foods instead? Your body and the Earth will thank you!

## LENTEN RETREATS WITH DINA MARIE HALE

**Saturday, March 2 from 9:30-11am;** Lenten Day of Recollection at St. Jude Catholic Church in Eugene. The retreat theme is: "Behold the Lamb of God" with Catholic speaker Dina Marie Hale of Faith Moments. Doors open at 9 am and a free will offering is appreciated. For more info and to RSVP your seat visit: [www.dinamarie.org](http://www.dinamarie.org). St. Jude Catholic Church is located at 4330 Willamette Street, Eugene, OR.

**Wednesday, March 6 from 7-9 pm**—A Lenten Twilight Talk with Dina Marie Hale of Faith Moments at Our Lady of Peace Retreat House in Beaverton. The theme is: "Behold the Lamb of God." This evening retreat will be a perfect way to enhance your Lenten journey in preparation for Holy Week and the Easter season. Doors open at 6:30pm and a free will offering is appreciated. Come early to browse the Catholic bookstore and gift shop in the retreat house. For info and to RSVP your seat visit: [www.dinamarie.org](http://www.dinamarie.org). Our Lady of Peace Retreat House is located at 3600 SW 170th Ave, Beaverton, OR.

**Friday, March 15 from 9:30am-1:30pm**—All are invited to a Lenten Day Retreat in The Grotto Conference Center with Dina Marie Hale of Faith Moments. Our theme: "Behold the Lamb of God." The day includes: two conferences, Holy Mass & Rosary, small group discussion, time for Confession, and an optional lunch. This is a perfect way to enhance your Lenten journey and enjoy the peace and beauty of the scenic grounds of The Grotto. Registration is required at: [dinamarie.org](http://dinamarie.org). The Grotto (National Sanctuary of Our Sorrowful Mother) is located at 85th and Sandy Blvd. in Portland, OR.

## CATHOLIC FRIENDSHIP GROUP

The Catholic Friendship Group is for single Catholics ages 40 to 60 throughout the Archdiocese of Portland who are looking to grow in faith and fellowship! Gatherings are held every other week from 7:00-8:30pm at St. Birgitta Parish (11820 NW St. Helens Rd.) Planned topics include: Feb 16th Fr. Joshua Clifton will cover Lenten Practices followed by discussion and social. And on March 1st we'll view and discuss C.S. Lewis' "Mere Christianity" video. For details and more info visit [www.catholicfriendshipgroup.com](http://www.catholicfriendshipgroup.com)

CDZ Collegium Musica presents Yuri Liberzon, internationally acclaimed concert classical guitarist and recording artist.

*"Yuri Liberzon has all the greatest musical qualities... virtuosic, thoughtful, expressive, and moving"* Musical Review ~ PJZ

**Sunday February 19 @ 2:00 pm  
The Old Madeleine Church**

Known for his stellar performances of Bach, Piazzolla, and Brower, Yuri's program will include his newest and most ambitious arrangements of Piazzolla from his soon to be released seventh album Naxos Label.



## 40 DAYS FOR LIFE

40 Days of prayer and fasting for an end to abortion—beginning on February 14. The campaign will be outside the Lilith Clinic late-term abortion facility located at 511 SW 10th Avenue, Portland. We have confirmation that our prayerful and peaceful presence there is making a difference. Please join us for this important witness for life! For more info, contact Therese at 503-997-1884; [www.40daysforlife.com/portlandor](http://www.40daysforlife.com/portlandor)

Days/Times: Thursdays, Fridays, and Saturdays, from 8 am to 2 pm.

- ▶ 40 Days for Life Opening Mass: Holy Rosary Catholic Church, 375 NE Clackamas, Portland On Saturday, February 24 at 8 AM.
- ▶ Pregnancy Help: To help pregnant moms in our own community, please go to: <https://www.ollparish.com/love-others/#Respect-Life> click on “Pregnancy Services” or call Sharon at 503-313-3689.
- ▶ Stand for Life: Please consider praying at local abortion clinics Thursdays, Fridays or Saturdays. Call Therese at 503-997-1884 for details.

### Upcoming Events in the Archdiocese

- ▶ 3/2 Oregon Right to Life Conference, Together We Advocate, will be held at Rolling Hills Community Church, 3550 SW Borland Road, Tualatin from 8 AM to 5 PM including lunch. To register, go to [www.ortl.org](http://www.ortl.org)

40 Days for Life is sponsored by the Archdiocese of Portland.

## QUARTET FOR THE END OF TIME— A GLIMPSE OF ETERNITY

For centuries, human beings have sought order and purpose in their lives by organizing Time. The early Church Fathers developed a Liturgical Calendar around the Paschal Mystery—that is, the birth, death and resurrection of Christ. Today, we use our Google calendars—busily scheduling work, family, vacations, and other activities in a manner that is predictable and ordered. Our days, weeks, months and even years change tempo and meter accordingly. I refer to this as the “rhythm of life.” When that rhythm is disrupted—whether by illness, the death of a loved one, natural disaster, wars, or even a pandemic—that stability and purpose can give way to fear and uncertainty, and for a while, time seems to stand still. I have found it is often during these times that God reveals to us that HIS time is not always our time.

It is through this lens that French composer Olivier Messiaen (1908-1992) created *Quartet for the End of Time*, one of the epic chamber-music masterpieces of the 20th century. Messiaen wrote and performed the quartet while imprisoned at Stalag VIII-A during World War II. It is composed for clarinet, cello, violin, and Messiaen himself on piano—the available instruments and musicians in the prison camp. As a devout Catholic, Messiaen’s

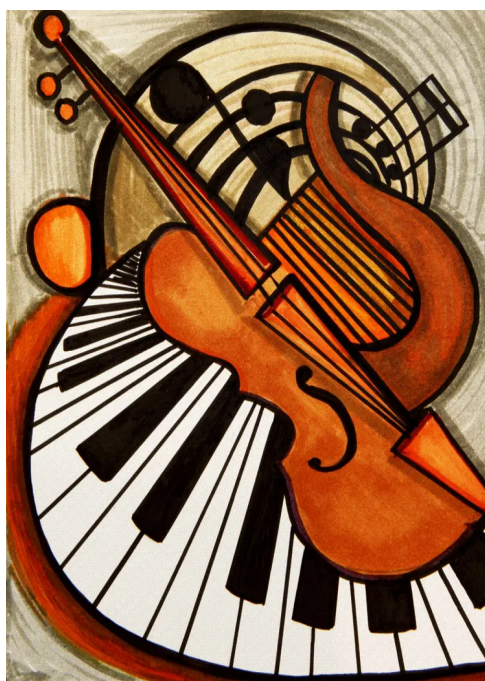
inspiration was the Book of Revelations—not just as a vision of the “end times”—but the passage of Time as we know it and the beginning of eternity. With the rhythm of his own life disrupted by the ravages of war, Messiaen was no longer interested in musical time as rhythm—instead, aspiring to rhythms outside of time. Thus, the eight-movement piece is written entirely without conventional rhythmic meter—its notes organized instead by ever-changing patterns. The effect is often a feeling of weightlessness, punctuated by rhythmic bursts of apocalyptic fury, trumpet blasts, and finally, the calm of eternity. Woven throughout the piece is Messiaen’s lifelong fascination with birdsongs (mimicked by the clarinet and violin), at times layered with the ethereal sounds of the piano and cello—a juxtaposition of nature and spirituality. In the words of Messiaen, “The birds are the opposite of Time; they are our desire for light, for stars, for rainbows and for jubilant outpourings of song”!

More than a musical tour de force, *Quartet for the End of Time* reminds us that even in the midst of suffering, there is hope. For God allows us to transcend Time as we know it—offering a glimpse of eternal life where time knows no bounds.

—*Maria Manzo*

“Prayer gives us the strength to strive ahead, overcome our fears, and glimpse the salvation that God prepares for us, even amid the darkness. Prayer also draws God’s salvation near.”

—Pope Francis via  
X (Twitter) @pontifex



Bravo! Concerts Northwest Presents

Sunday, February 11 | 3 PM  
The Historic Old Madeleine Church

Quartet for the  
End of Time  
by Olivier Messiaen, 1941

The Elysium Quartet

Maria Manzo, Piano | Collin Oldham, Cello  
Tatiana Korchanova, Violin | Michael Kissinger, Clarinet

Tickets: [www.bravoconcerts.com](http://www.bravoconcerts.com)



# Mmm...Pancakes!

## KNIGHTS OF COLUMBUS PANCAKE BREAKFAST SUNDAY, FEBRUARY 18 AFTER 10:00 MASS

Join us in the Parish Hall for a great pancake breakfast! Lots of yummy food for the family.

No fixed prices...donations accepted



### FREE EVENT

All are welcome!



**Fr Roy Palatty CMI**  
SPIRITUAL DIRECTOR,  
SHALOM MEDIA

# JESUS Heals

Come & experience the healing touch of Jesus!

**HOLY MASS | PREACHING | EUCHARISTIC ADORATION  
PRAYERS FOR HEALING**

## FEBRUARY | 2024

**19** | MONDAY  
5:45 PM - 8:00 PM

**St. Matthew Catholic Church**  
475 SE 3rd Ave,  
Hillsboro, OR 97123

**20** | TUESDAY  
5:45 PM - 8:00 PM

**Holy Trinity Catholic Church**  
13715 SW Walker Rd,  
Beaverton, OR 97005

**22** | THURSDAY  
5:45 PM - 8:00 PM

**St. Francis Catholic Church**  
15651 SW Oregon St,  
Sherwood, OR 97140



### FANTASTIC FISH, FAMILY FUN

- ➔ Lightly battered fresh fish by TC O'Leary's
- ➔ Fish & chips, slaw, lemonade & brownies (pizza for kiddos, too)
- ➔ Local Beer & NW Wines available for purchase
- ➔ 1 Bingo card included with ticket purchase
- ➔ Silent disco! \$5 per headphone
- ➔ Live bluegrass band

TICKETS: [WWW.THEMADELEINE.EDU/FISHFRY](http://WWW.THEMADELEINE.EDU/FISHFRY)

KIDS 5 & UNDER EAT FREE

ADULT \$19 CHILD \$12 (10 & under)



WE NEED VOLUNTEERS • SIGN UP AT THE WEBSITE



## GOSPEL VESPERS

Traditional Catholic Evening Prayer sung in the style of Gospel Music

Presented by:

The Madeleine Parish Choir

&

St. Andrews Gospel Choir

Sunday, February 25 at 6:30 PM: The Old Madeleine Church

3123 NE 24<sup>th</sup> Ave., Portland, OR 97212

(Free-will offering will go to support Music Ministry at The Madeleine Church)

For more information, contact: [mmanzo@themadeleine.edu](mailto:mmanzo@themadeleine.edu)

Madeleine Knights of Columbus annual



# ST. PATRICK'S DAY DINNER



THE MADELEINE PARISH HALL

**SATURDAY, MARCH 9 • DOORS OPEN AT 5:30, DINNER AT 7:00 PM**

All you can EAT Corned Beef & Cabbage; includes cole slaw & traditional vegetables.

"Pot of Gold" Raffle & Irish Dancing



Tickets \$35  Kids <sup>UNDER 12</sup> \$10



Reservations & tickets:

Order tickets at [www.themadeleine.edu/st-pats](http://www.themadeleine.edu/st-pats)

Or Contact Dan O'Donnell, 503-440-9415

Proceeds to benefit Mother & Child Education Center and Madeleine Scholarship Fund



# SUPPORT THE CHURCH IN CENTRAL AND EASTERN EUROPE

## RESTORE THE CHURCH BUILD THE FUTURE

Catholics are called to evangelize their neighbors and loved ones by leading them into an encounter with Jesus Christ. When faithful disciples offer a visible and active presence in their communities, they live that calling through their works of mercy, their public worship, and their willingness to share the gospel message with those they meet.

In two former republics of the Soviet Union, which experienced 70 years of communist oppression, the Church is becoming that visible and active presence. Since 2018, the Center for Catholic Youth in the Republic of Georgia has brought together hundreds of children and youths for faith-enriching activities like Bible school, Lenten spiritual exercises, pilgrimages, and works of service in parish communities. Meanwhile, in central Asia, the construction of a new cathedral and pastoral center in the heart of Kyrgyzstan's capital city, Bishkek, is a

visible sign of hope and welcome in a land where 90% of the population is Muslim.

For more than 30 years, the United States Conference of Catholic Bishops (USCCB) has worked to restore a visible, active Church in Central and Eastern Europe and to build a hopeful new future in Georgia, Kyrgyzstan, and more than 25 other countries throughout the region. Your contributions to the USCCB's Collection for the Church in Central and Eastern Europe fund grants to construct churches, enliven the faith of children and young people, and form disciples who live to help others encounter Christ.

More information about the collection and the range of projects it supports can be found at [www.usccb.org/ccee](http://www.usccb.org/ccee).

### 2022 DISTRIBUTION OF GRANTS

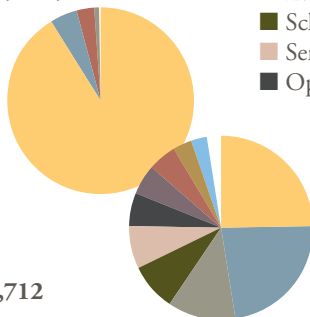
Total Number of Grants Approved: 354

Total Amount Approved: \$8,522,439

#### EXPENSES

Grants and Donations	91.28%
Program Costs	4.76%
Promotions and Fundraising Expenses	3.06%
Administrative Expenses	0.88%
Allocations-Internal Grants	0.01%

**Total Expenses \$9,326,712**



PROGRAM AREA	GRANTS	AMOUNT	PERCENT
Construction	73	\$2,108,439	24.74%
Emergency*	9	\$1,951,804	22.90%
Evangelization	77	\$1,007,437	11.82%
Scholarships	80	\$728,122	8.54%
Seminary Support	16	\$629,884	7.39%
Operational Support	28	\$503,860	5.91%
Equipment/Accommodation Purchase	19	\$452,180	5.31%
Social Aid	21	\$412,320	4.84%
Education	10	\$283,976	3.33%
Vehicle Purchase	11	\$242,423	2.84%
Multimedia	10	\$201,994	2.37%

\*Includes grants for urgent humanitarian and pastoral responses to the crisis in Ukraine.



### Collection for the Church in Central and Eastern Europe

OFFICE OF NATIONAL COLLECTIONS • 3211 FOURTH STREET NE • WASHINGTON, DC 20017-1194  
202-541-3400 • FAX 202-541-3460 • [WWW.USCCB.ORG/NATIONALCOLLECTIONS](http://WWW.USCCB.ORG/NATIONALCOLLECTIONS)

Copyright © 2023, United States Conference of Catholic Bishops, Washington, DC. All rights reserved. Photos: © Archdiocese of Ivano-Frankivsk, Damian Wojciechowski, Apostolic Administration of Kyrgyzstan.



60200424



# STRENGTHENING THE CHURCH AT HOME



**J**esus calls his followers to love others as he loves them. Inspired by this call, Christians have shown his love through works of mercy such as visiting the sick and imprisoned, educating young people, and praying endlessly for others. Not only are these works of mercy directed to meet material or spiritual needs, but they are ways in which Christ draws people closer to himself.

In the Diocese of Amarillo, the diocesan criminal justice ministry answers Christ's call to visit and serve prisoners and patients confined to hospitals. Since 2004, this ministry has expanded to bring the Eucharist, Sacred Scripture, and prayer to inmates of the seven prisons and two large hospitals in the diocese. This ministry of mercy includes retreats during which inmates can encounter the love of Jesus, heal from past failures and wounds, and develop

new hope for the future. Many inmates have experienced spiritual conversions that have inspired them to join formation programs and enter the Catholic Church.

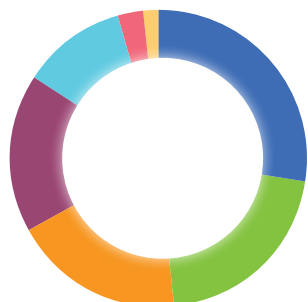
The criminal justice ministry is one of many innovative outreach efforts made by dioceses supported by Catholic Home Missions. Home mission dioceses have small or widely dispersed Catholic populations, large or rugged areas of land that make it difficult to minister to the needs of the people, or economic challenges caused by poverty, unemployment, or natural disasters. Your participation in the annual Catholic Home Missions Appeal supports dioceses throughout the United States and its territories that need financial help to sustain core pastoral services and missions of mercy to those they serve.

For more information about the Catholic home missions, visit [www.usccb.org/home-missions](http://www.usccb.org/home-missions).

## What Is a Home Mission Diocese?

Home mission dioceses are those Catholic dioceses in the United States, its territories, and former territories that cannot provide basic pastoral services without outside help. Basic pastoral services include Mass, the sacraments, religious education, and ministry training for priests, deacons, religious sisters, and laypeople. Nearly 40% of dioceses in the United States and its territories are considered home missions.

## CHMA FINANCIALS 2022



### Totals by Program Area

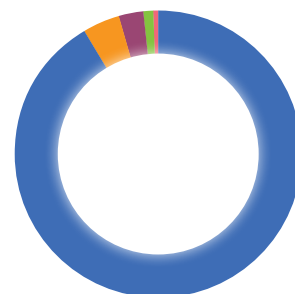
• Diocesan and Parish Assistance	\$2,715,000
• Priestly and Religious Vocations	\$2,085,000
• Special Grants*	\$1,832,200
• Faith Formation	\$1,695,000
• Cultural Ministries**	\$1,125,000
• Strengthening Marriage and Family Life	\$260,000
• Life and Dignity of the Human Person***	\$155,000

**Total: \$9,867,200**

\* Special Grants: Eucharistic Revival, \$680,000 | Natural Disaster Recovery Efforts, \$500,000 | World Youth Day, \$320,000 | Diocesan Professional Development Opportunities, \$174,200 | Installation Grants for New Bishops, \$108,000 | Staff Discretion & Agility Fund, \$50,000

\*\* including Hispanic and other ethnic and cultural ministries

\*\*\* including prison ministries and ministries for persons with disabilities



• Grants and Donations	\$9,761,689
• Program Costs	\$448,070
• Promotions and Fundraising Expenses	\$317,517
• Administrative Expenses	\$90,847
• Allocations - Internal Grants	\$47,935

**Total Expenses: \$10,666,058**



### CATHOLIC HOME MISSIONS APPEAL

OFFICE OF NATIONAL COLLECTIONS

3211 FOURTH STREET NE • WASHINGTON, DC 20017-1194

202-541-3400 • FAX 202-541-3460 • [WWW.USCCB.ORG/NATIONALCOLLECTIONS](http://WWW.USCCB.ORG/NATIONALCOLLECTIONS)





# LENT

## THE BASICS

### WHAT IS LENT?

Lent is the annual preparation for Easter observance—calling us to reform our lives and to open our hearts to the blessings God has promised to bestow on us. Lent begins Ash Wednesday and ends on Holy Thursday evening when the Triduum begins.

### WHAT MUST I DO?

According to the Church's Canon Law, all healthy Catholics from age 18 to 59 are required to fast and abstain from meat on Ash Wednesday and Good Friday, and to abstain from meat on all other Fridays of Lent. Fasting is a bodily way to remind ourselves that we need God above all things. Fasting is also a sacrifice, a gift back to God of our heart's intent to depend more completely on God.

### WHAT SHOULD I DO?

Take the necessary steps to get yourself on the road to conversion and spiritual renewal. To help you do this, the three main Lenten disciplines urged are prayer, fasting and almsgiving. We are invited during Lent to practice these disciplines often. But these aren't just chores we must do because the Church strongly urges them; they are above all opportunities to grow in faith and in love for God.

### WHY PRAYER, FASTING AND ALMS?

The Lenten basic practices of prayer, fasting and almsgiving are rooted in Jesus' original guidance about how to be his disciples that we find in the Sermon on the Mount (Matthew chapter 5–7). *The Catechism of the Catholic Church* (#1966–1972) also reminds us that Jesus here outlines for us the new law which, if we embrace and implement it, will lead us more surely to the interior renewal and growth in holiness and perfection that Jesus expects of us as his disciples.

### SHOULD I SET LENTEN GOALS?

Yes. Reflect prayerfully about your Lenten resolutions before making them. Then make yourself a list. But be modest. You may be setting yourself up for disappointment if you set unrealistic goals. And doing a little with love and devotion is spiritually more beneficial than trying to do much but doing it halfheartedly.

## THE EVENTS OF LENT AND HOLY WEEK

**Lent** is an Anglo-Saxon word meaning *spring*. The season lasts from Ash Wednesday until the Mass of the Lord's Supper on Holy Thursday.

**Ash Wednesday** marks the beginning of Lent, often observed by receiving a cross of ashes on the forehead at Mass.

**Holy Week** includes the days from Palm Sunday through Easter.

**Palm** or **Passion Sunday** has contrasting names, one because of Jesus' triumphant entry into Jerusalem (to the waving palm branches), the other because this Sunday begins our focus on Jesus' days of suffering and death.

**Paschal Triduum**, from the Latin for "three days," extends from evening Holy Thursday through Easter Sunday.

**Maunder (Holy) Thursday** gets its name from Jesus' "new commandment" (*mandatum* in Latin) to love one another, which he spoke during the passover meal when he washed his disciples' feet and instituted the Holy Eucharist. Typically the Catholic Church now refers to this day as **Holy Thursday** and it is also notable for being the day on which the *Chrism Mass* is celebrated.

**Good Friday** marks the events of Jesus' trial, crucifixion, death and burial, sometimes with special *Tre Ore* (*three hour*) observances. The altar is stripped of all decoration and the church darkened until Saturday's Easter Vigil.

**Easter Vigil** is celebrated on Holy Saturday evening after sundown; traditionally a time for baptizing, confirming and receiving new members.

**Easter**, named after an ancient spring festival, is the "great Sunday," on which each Sunday Eucharist is modeled.

## Christ in the Desert

Lenten observance in the early centuries of the Church was closely linked with Christ's forty days of testing in the desert. So the Lenten journey has long been seen as going with Jesus, figuratively, at least, into the desert. *The Catechism of the Catholic Church* notes: "By the solemn forty days of Lent the Church unites herself each year to the mystery of Jesus in the desert" (#540).



"Filled with the holy Spirit, Jesus returned from the Jordan and was led by the Spirit into the desert for forty days, to be tempted by the devil. He ate nothing during those days, and when they were over he was hungry" (Luke 4:1-2). Jesus was tempted by the devil to use his divine and human powers only for his own personal desires rather than to use them generously and unselfishly for others according to God's plan of redemption.

During Lent, we practice disciplines that are aimed at renewing and transforming our lives, to help us rise with Christ to the often harsh challenges of self-giving love.



## LENTEN REGULATIONS FOR FASTING & ABSTINENCE

The Church teaches that Catholics in good health should observe the following practices during Lent unless for some serious reason they are unable to do so:

Catholics between the ages of 18 and 59 should fast on Ash Wednesday and Good Friday. In addition, all Catholics 14 years old and older should abstain from meat on Ash Wednesday, Good Friday and all the Fridays of Lent.

Fasting as explained by the U.S. bishops means partaking of only one full meal and two smaller meals that do not equal the main meal. Abstinence forbids the use of meat, but not of eggs, milk products or condiments made of animal fat.

## READINGS FOR LENT 2024

Ash Wednesday: ..... Jl 2:12-18; 2 Cor 5:20—6:2; Mt 6:1-6, 16-18

1st Sunday: ..... Gn 9:8-15; 1 Pt 3:18-22; Mk 1:12-15

2nd Sunday: ..... Gn 22:1-2, 9a, 10-13, 15-18; Rom 8:31b-34; Mk 9:2-10

3rd Sunday: ..... Ex 20:1-17; 1 Cor 1:22-25; Jn 2:13-25

4th Sunday: ..... 2 Chr 36:14-16, 19-23; Eph 2:4-10; Jn 3:14-21

5th Sunday: ..... Jer 31:31-34; Heb 5:7-9; Jn 12:20-33

Palm Sunday: ..... Mk 11:1-10; Is 50:4-7; Phil 2:6-11; Mk 14:1—15:47

Holy Thursday: ..... Ex 12:1-8, 11-14; 1 Cor 11:23-26; Jn 13:1-15

Good Friday: ..... Is 52:13—53:12; Heb 4:14-16, 5:7-9; Jn 18:1—19:42

Easter Vigil: ..... Gn 1:1—2:2; Gn 22:1-18; Ex 14:15—15:1;

Is 54:5-14; Is 55:1-11; Bar 3:9-15, 32—4:4;

Ez 36:16-17a, 18-28, 18-28; Rom 6:3-11; Mark 16:1-7



**Timmco**  
INSURANCE

Brian Timm  
Susan Ames | Derek Ames

1615 NE Broadway | 503-288-8818  
www.timmco.com

AUTO | HOME | BUSINESS | LIFE

**TIM WALTERS**

Principal Broker



The most trusted name in Real Estate!

Committed to the NE Portland

Neighborhoods since 1991



503-545-1880 | TimWaltersRealtor@Gmail.com | TimWaltersPc.com



**DDI** benefits

Questions about Medicare?  
We can help!

Emmett Dooney, '11  
Licensed Medicare Agent  
503.206.4080  
medicare@ddibenefits.com



**T.C. O'LEARY'S**

a little irish  
PUB

2926 NE Alberta Street  
A little taste of Ireland!  
www.tcolearys.com



Parishioners Tom, Siobhan  
& Aine O'Leary

**JOHN M. WYNN**

ATTORNEY AT LAW

McGill, Kapranos & Wynn  
Parishioner

Hollywood Professional Center, 3939 NE Hancock St., Ste. 305  
jmwpxd@qwestoffice.net • 503-287-7333



**LANCE MARRS**

PRINCIPAL BROKER  
503 701 5323  
PORTLAND MODERN REAL ESTATE  
LICENSED IN OREGON  
PORTLANDMODERN.COM



**PAUL MARRS**

MORTGAGE LOAN OFFICER NMLS ID #5212  
O:503 781 2114 B:503 994 8559  
PMARRS@CANOPYMORTGAGE.COM  
CANOPYMORTGAGE.COM/PAULMARRS  
CANOPY MORTGAGE



Beaverton Branch Canopy Mortgage, LLC 12655 SW Center St. Beaverton, OR 97005 NMLS ID# 1359687



**JOSÉ MESA AUTO WHOLESALE, LLC**

"The mobile auto dealer who is always in your neighborhood."

**YOUR DISCOUNT AUTO RETAILER SINCE 1992!**

sales@josemesa.com 503-789-0438 www.josemesa.com

NEW • USED • BUY • SELL • LEASE • TRADE • CONSIGN • BROKER • APPRAISE



**Dr. Phil Doleac, PC**

Orthodontics for all ages  
www.magic-smiles.com

Beaverton Portland Scappoose  
503.644.7009 503.255.1694 503.543.4488

**BUY OR SELL**

**OUR TEAM  
CAN HELP!**



**Opt.**  
REAL ESTATE

**JEFF KERSTEN**  
REALTOR®  
503.720.9179  
jeff@theopt.com

**Retrouaille**  
A Christian Peer Ministry  
A LIFELINE FOR  
HURTING MARRIAGES

Is your marriage tearing  
you and your family apart?

Weekends held 3 times per year in Oregon

www.helpourmarriage.com  
503-704-7382

Donated by Kevin & Carol McMenamin



**Maria Fitzgerald**  
REAL ESTATE BROKER  
503-680-9737

**maria**  
fitzgerald  
finding the home that fits you...

**ANNE C. STEINER**  
ESTATE PLANNING  
ELDER LAW ATTORNEY

503.946.8361 • 1915 NE Cesar Chavez Blvd.  
PARISHIONER - anne.c.steiner@gmail.com

WILLS - TRUSTS - PROBATE  
GUARDIANSHIP - CONSERVATORSHIP



Dr. John R. Lewis

*Beaumont Vision*

*Beaumont Vision:*  
providing full-  
service eyecare  
for all ages,  
including com-  
prehensive  
exams, glasses  
and contacts

Stop by to view our unique  
eyewear

Most insurances accepted

4331 NE Fremont St

Ph: 503-331-3937

**JOHN W. LOBO  
PAINTING**

Custom Interior & Exterior  
Creative Finishes  
503-969-3337 CCB#89027  
Licensed Bonded Insured



**Sweetly Aimee, LLC**  
Custom Wedding and All-  
Occasion Cakes and Desserts

Aimee Holzschuh  
Parishioner & Parent  
503.998.7368  
www.SweetlyAimee.com



**PAUL MYERS, Ph.D., LLC**  
PSYCHOTHERAPY, COUNSELING  
& CONSULTING SERVICES

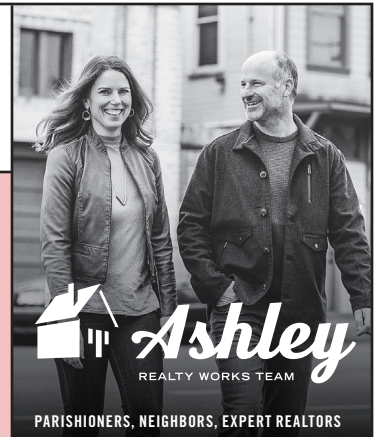
(503) 381-6685 paulmyersphdpdx@gmail.com  
www.paulmyersphdpdx.com

**THEORY**  
MORTGAGE

Beating Banks Daily

Brian DuVal  
503-850-7667

NMLS 5912, NMLS 1848246



PARISHIONERS, NEIGHBORS, EXPERT REALTORS

**Wick & Karoline Ashley**  
karoline@ashleyrealtyworks.com  
(503) 819-4851  
237 NE Broadway Suite 100

**RE/MAX**  
equity group

**Mark McGinnis**

Parishioner, Parent  
Mortgage Advisor

NMLS 98586

503-348-4917

"It's about service!"

mark.mcginis@neohomeloans.com



**WILLAMETTE**  
FINANCIAL ADVISORS, LLC  
PERSONALIZED ADVICE FROM TRUSTED ADVISORS

**James M Jones**

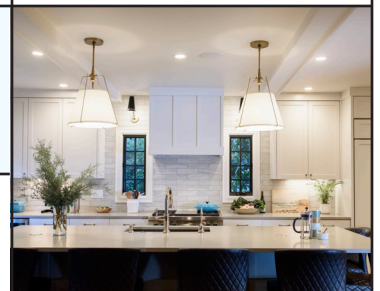
Financial Advisor, CFP®

Parishioner

Direct 503.284.9200

Office 503.7470306

jimj@wfinadv.com



Whole house remodels  
• Kitchens • Bathrooms  
• Basements • Additions  
In-house architecture & design

Nathalie Roloff, Parishioner

503.245.0685  
rolloffconstruction.com  
4300 NE Fremont #130



CCB #140721  
WA#ROLOFC1873KU

Bulletin Advertising: contact Rich Hammons • bulletin@themadeleine.edu • 503--281-5777