



THIS WEEK AT THE MADELEINE

Furthering the Reign of God, Where All Are Welcome • November 25–26, 2023

MADELEINE MARKETPLACE: DECEMBER 7

Fun, food, music, shopping, tree lighting, Santa and much more!

Make your plans now to join in our annual tradition— The Madeleine Marketplace and Tree Lighting— Thursday, December 7, from 2-8 pm.

Plan to stay for a fun-filled afternoon and evening. Get your shopping started with 50 or more vendors in the Parish Hall and Fireside Room.

We've got dinner covered

Cook's night off! We will have pizza, chili, churros, spring rolls, soft drinks, bake sale goodies and much more.

Bake Sale goodies needed—We need your baked goods for our bake sale!

Bake your best cookies, pies, cakes, candies, then bring them to the Parish Hall on Thursday, December 7 by 10:00 am.



THE MADELEINE MARKETPLACE
Holiday Bazaar & Christmas Tree Lighting
DECEMBER 7 2:00 – 8:00 PM

Entertainment?

Christmas caroling, photos with Santa and Mrs. Santa, cookie decorating and more. And, of course, the Tree Lighting at 6:00 pm

Volunteers needed

Help make this night go off without a hitch by signing up for one of our volunteer slots. Sign up online at www.themadeleine.edu/marketplace.

Questions? Contact Julie Kupers jkupers@themadeleine.edu or call her at (720) 936-563.

SHARING THE WORD: AN ADVENT CELEBRATION

Mondays, December 4, 11 & 18 • St. Catherine Room

The Discerning Catholic Ministry invites all Madeleine Parishioners to join us for “Sharing the Word” the first three Mondays in Advent. We will meet upstairs in the Saint Catherine Room of The Old Madeleine Church from 10:00 am to Noon on Monday December 4, Monday December 11, and Monday December 18. Please enter through the 23rd Street entrance; this allows parishioners to utilize the elevator as necessary.

“Sharing the Word” is a short service of prayer and scripture and includes a reflection on the readings by a parishioner from

the Discerning Catholic ministry. In doing so, they exercise discernment as well as develop their voice in service to our apostolic mission.

After Sharing the Word, we will also share a light meal of finger foods—feel free to bring something to share—followed by Lectio Divina on that day's scripture and general discussion as the Spirit leads us.

Please join us in celebration of the wondrous gift of Advent! All are invited! If you'd like more information, please contact Dan O'Brien at discerningcatholic@themadeleine.edu

Inside this week's bulletin:

- ▶ **The Madeleine Giving Tree**—Tags are on the tree this weekend! Make Christmas a bit brighter for children at Children of Incarcerated Parents and Community Transitional School. Details Page 5.
- ▶ **Annual Sock Drive Underway**—Wool socks for those in need. Details Page 4.
- ▶ **Sleep in Heavenly Peace Bedding Drive**—Donate bedding for kids in need. Details Page 5.
- ▶ **Simone Weil Catholic Worker Community**—Representatives from this Portland-based organization will be visiting at Masses the weekend of December 2-3. Details Page 3.

Solemnity of Christ the King

SOME OF THE MOST DRAMATIC biblical imagery comes on this last Sunday of our liturgical year. The overall imagery on this feast is striking: Israel's rulers do not adequately care for their people. So, God will do it, as both shepherd and judge. But, the responsibility for the neediest shifts in the Gospel. When the Son of Man comes in glory, he will judge us for our acts of mercy. We cannot look to God to care for those in need. The job is now ours, and the King now judges us.

PRAY FOR OUR FAITHFULLY DEPARTED

- ▶ Jack Evans—Funeral November 30, 11:00 am
Rosary 10:30 am
- ▶ Zoe Coughlin-Glaser ▶ Debbie Laskowski
- ▶ Libby Hill

PRAYER REQUESTS

For those who are ill, or in need of our prayers

- ▶ John Keith
- ▶ Aaron Stevenson

WORSHIP & PRAYER

- 11/28, Tues, Daniel Fusco †
- 11/29, Weds Brian, Hazel and Leona Aguilar
- 11/30, Thurs. Birthdays in November
- 12/01, Fri. Marie Hong Tran †
- 12/02, Sat Michael White †
- 12/03, Sun, 8:00 am. The Madeleine Community
10:00 am. Sheila Elgart †

Calendar This Week

SUNDAY, NOVEMBER 26

8:00 am: Mass—Church

10:00 am: Mass—Church  **ALSO LIVESTREAMS-**

MONDAY, NOVEMBER 27

6:30 pm: FA Meeting—Fireside Rm

TUESDAY, NOVEMBER 28

Nourish Our Neighbors (NON)—7th Grade

8:00 am: Mass—Church

9:00 am: Adoration—Church

WEDNESDAY, NOVEMBER 29

8:00 am: Mass—Church

2:40 pm: Children's Choir Rehearsal—Church

5:30 pm: Chimes Rehearsal—Church

7:00 pm: Madeleine Choir Rehearsal—Church

THURSDAY, NOVEMBER 30

10:30 am: Rosary for Jack Evans—Church

11:00 am: Funeral for Jack Evans—Church
Reception follows, Old Madeleine Church

2:00 pm: Mass—Church

FRIDAY, DECEMBER 1

8:00 am: Mass—Church

SATURDAY, DECEMBER 2

3:00 pm: Reception—Old Madeleine Church

5:00 pm: Mass—Church

SUNDAY, DECEMBER 3

► First Sunday of Advent

8:00 am: Mass—Church

10:00 am: Mass—Church  **ALSO LIVESTREAMS-**

10:00 am: Penance Class—Fireside Rm

11:10 am: First Penance Practice—Church

11:30 am: Choir Rehearsal—Church

11:30 am: Laudato Si'—Zoom

11:30 am: RCIA—St. Catherine Rm

2:00 pm: Season of Lights Holiday Concert—Old Madeleine Church

6:00 pm: Confirmation Class—Fireside Rm

SAVE THE DATE

► **Advent Begins:** December 3

► **Madeleine Marketplace:** December 7

► **Wine Tasting:** Postponed to Feb. 3, 2024

► **Ash Wednesday:** February 14, 2024

PARISH LIFE

ADVENT CANDLES AND WREATH RINGS AVAILABLE AFTER MASSES

December 3 marks the first week of Advent and the tradition of the Advent Wreath. After Masses on November 25–26 and December 3–4, we will again offer candles for purchase (\$5/pack while supplies last). To complete your Advent wreath, we encourage collecting your own greens..



Symbolism of the Advent Wreath

The circle of the wreath, which has no beginning or end, symbolizes the eternity of God, the immortality of the soul, and the everlasting life we find in Christ.

The candles also have their own special significance, representing the four weeks of Advent, and one candle is lit each Sunday. Three of the candles are purple because the color violet is a liturgical color signifying a time of prayer, penance, and sacrifice. On the fourth week of Advent, we

light the final purple candle to mark the final week of prayer and penance as we wait for the birth of our Savior. This final candle, the “Angel’s Candle,” symbolizes peace. It reminds us of the message of the angels: “Peace on Earth, Good Will Toward Men.”

CONFIRMATION GATHERING

December 3, 2023—Families of the Confirmandi will gather in the Fireside Room for an Advent Prayer at 6:00pm followed by refreshments and visiting. (Confirmation families, please see your email for details.)

MADELEINE BOOK CLUB

We are so thankful for the support of our parishioners and friends!



We have a terrific group

of readers and prayer warriors who would love to have you join us! For more information, please contact our ministry coordinator: Gretchen Stevenson, gypsy-frau47@yahoo.com or 503-312-6834.

Ministries, teachers, service groups

Please send in photos by December 19 for the annual The Madeleine in Service edition of our parish bulletin on Christmas! Instructions and upload link at themadeleine.edu/photos

“Let us pray to the Lord for our deceased, for everyone - that the Lord might welcome them all.”

—Pope Francis via X (Twitter) @pontifex



Upcoming Concerts

OC=Old Madeleine Church **MC**=Main Church

- **Dec. 3, 2:00 pm OC** • Peter Zisa & Friends
16th Annual Season of Lights Holiday Concert
- **December 5, 7:00 pm OC** • 45th Parallel Universe • Czech Please • 45thparallelpdx.org
- **December 10, 3:00 pm MC** • Bravo! Concerts Northwest • Handel’s Messiah • bravoconcerts.com
- **Dec. 18, 7:00 pm OC** • 45th Parallel Universe • Ellington’s Nutcracker Suite • 45thparallelpdx.org



Today as we celebrate Christ the King, we hear Jesus say: “...whatever you did for one of the least brothers and sisters of mine, you did for me.” Knowing that we find the face of Christ in the poor, this month, the Society of St. Vincent de Paul wishes to thank you for your generosity in providing food and financial support this Thanksgiving. —Mary Clare O’Brien, 503-309-7639

PARISH LIFE

SIMONE WEIL CATHOLIC WORKER COMMUNITY

Members of the Simone Weil Catholic Worker community will be visiting during all Masses the weekend of December 2-3.

The Catholic Worker Movement began in 1933, when the Servant of God Dorothy Day and a man named Peter Maurin teamed up to publish and distribute a newspaper called "The Catholic Worker." Taking the Gospel as their guide, their movement was committed to nonviolence, voluntary poverty, and the Works of Mercy as a way of life. It wasn't long before they opened their first "house of hospitality" where the homeless, the hungry, and the down and out would always be welcome.

This Catholic Worker community began in 2019, thanks in large part to the support of Madeleine parishioners. We welcome folks coming out of homelessness to live with us in our houses. In addition to supporting our residents, we also facilitate opportunities for ongoing faith formation and a community-based zero interest lending program inspired by the grassroots credit union communities pioneered

in immigrant Catholic parishes. Through these projects, open Wednesday and Friday dinners, shared work, and public prayer, we aim to live deeply what we believe about being the Body of Christ, and invite others to do the same.

As we enter into this Advent season, we invite you to join us for whatever part of our work meets your interest. You can learn more by visiting our website: www.simoneweilhouse.org.

Finally, this work is organized by a community of volunteers on a shoestring budget. We are 100% supported by donations from those who believe in the importance of this work. If you have the ability to support our community financially this holiday season, no matter the amount, we would be grateful. You can do so by scanning the QR code above, or visiting our website.

Peace to you this Advent season!



Our 2023 Advent devotional book, with reflections each day of Advent written by members of The Madeleine community is available at the Parish Office. It will also be available for download at www.themadeleine.edu/advent

ADORATION: JESUS INTENSELY WITH US

"The Church draws her life from the Eucharist," Pope St. John Paul II began his April 17, 2003, Encyclical Letter on the Eucharist. "In a variety of ways she joyfully experiences the constant fulfillment of the promise: "Lo, I am with you always, to

the close of the age (Matthew 28:20), but in the Holy Eucharist, through the changing of bread and wine into the body and blood of the Lord, she rejoices in this presence with unique intensity."

Tuesday Adoration begins after the 8 am Mass, ends at 2 pm.



Mmm...Pancakes!

KNIGHTS OF COLUMBUS PANCAKE BREAKFAST SUNDAY, DECEMBER 10 AFTER 10:00 MASS

Join us in the Parish Hall for a great pancake breakfast!
Lots of yummy food for the family.
No fixed prices....donations accepted



WEEKLY MASS TIMES

Regular Mass Times:

Tuesday, Wednesday, Friday 8:00 am
Thursday School days: 2:00 pm
Days school not in session: 8:00 am
Saturday Vigil 5:00 pm
Sunday 8:00 am, 10:00 am

Penance Saturday, 4:00-4:40 pm
Adoration Tuesdays, 9:00 am-2:00 pm

PARISH OFFICE

Hours Monday-Friday, 9:00 am-3:00 pm
Phone: 503-281-5777 **Fax:** 503-281-0673
School Office 503-288-9197

PARISH STAFF

- Rev. Bonaventure Rummell**—Administrator
fatherbonaventure@themadeleine.edu . . . ext. 111
- Deacon Mike O'Mahoney**—Permanent Deacon
deaconmike@themadeleine.edu
- Tresa Rast**—School Principal
trast@themadeleine.edu 503-288-9197
- Darlene Maurer**—Pastoral Assistant
dmaurer@themadeleine.edu ext. 125
- Linda Scheurman**—Bookkeeper
lscheurman@themadeleine.edu ext. 119
- My Schoning**—Business Manager
mhoang@themadeleine.edu ext. 118
- Therese Fenzl**—Director of Spiritual Ministries
tfenzl@themadeleine.edu ext. 116
- Maria Manzo**—Director of Music
mmanzo@themadeleine.edu ext. 113
- Guy Allen**—Facilities Manager, Events Manager
gallen@themadeleine.edu
- Gretchen Stevenson**—Office
g Stevenson@themadeleine.edu ext. 112
- Julie Kupers**—Special Events
jkupers@themadeleine.edu . . . 720-936-5635
- Janeen Reilly**—Parish Administrator
jreilly@themadeleine.edu ext. 110
- Rich Hammons**—Director of Communications
rhammons@themadeleine.edu ext. 129

SACRAMENTS

- Funerals, Infant Baptism**—
Darlene Maurer ext. 125
- Marriages, Anointing of the Sick**—
Fr. Bonaventure Rummell ext. 111
- First Reconciliation, First Eucharist**—
Rose Horton sac-prep@themadeleine.edu
- RCIA**—Donna Mason rcia@themadeleine.edu
- Confirmation**—Therese Fenzl ext. 116

COUNCILS & CONTACTS

- Pastoral Council**—Amy Moran . . .617-470-7926
- Finance Council**—Jim Jones 503-284-3301
- Buildings & Grounds**—Erin Couch . . 503-281-9575
- School Advisory**—Tim Resch 503-984-4607
- Facility Requests**—themadeleine.edu/facilities
- Maintenance Requests**—My Schoning
mhoang@themadeleine.edu ext. 114
- Knights of Columbus**—
Dan O'Donnell 503-440-9415
- Ministry Schedule**
www.themadeleine.edu/minister-schedule
- Bulletin submissions due 5:00 pm Tuesday**
Email to bulletin@themadeleine.edu

HEALING THE WHOLE PERSON

November 30–December 2, 2023

Join Archbishop Sample on this journey to wholeness as we welcome Christ's divine love that brings the healing we ardently desire. Healing the Whole Person (HWP) is the basis for Dr. Bob Schucht's best-selling book "Be Healed" and takes place only four times each year in parish settings across the USA. Led by renowned speakers and authors Dr. Bob Schuchts, Sr. Miriam James Heidland SOLT, and Bart Schuchts, the uniquely engaging format will help you see and experience God's healing love through teaching, prayer, personal reflection, Adoration, prayer, worship, and the Sacraments. To register: jpiihealingcenter.org/event/11-29-23-hwp

4 STAGES OF MARRIAGE

The 4 stages of marriage are: (1) Romance, (2) Disillusionment, (3) Misery, and (4) Awakening. Many marriages experience the first 3 Stages. Marriages that end in divorce never make it to the 4th Stage of Awakening. Don't give up without learning about the 4th Stage of Awakening. If your marriage suffers from Disillusionment or Misery please contact Retrouvaille (pronounced retro-vi with a long i).

Join Oregon Retrouvaille as we host a working weekend for couples struggling in their marriages by couples who have been there in the struggle. Come January 26-28, 2024 at Our Lady of Peace Retreat Center in Beaverton Oregon. For confidential information about or to register for the program call 1-503-225-9191 or email: portland@retrouvaille.org or visit us at Helpourmarriage.org

RMD for 2023?

If you are at least 70½ years of age and are required to take a minimum distribution from your IRA, you can donate part or all of that distribution to The Madeleine, tax free! For information, contact parish Business Manager, My Schoning, 503-281-5777 or mhoang@themadeleine.edu.

ANNUAL SOCK DRIVE IS UNDERWAY!

Please join us in helping our neighbors in need this winter. The Madeleine Knights of Columbus and The Madeleine School are sponsoring the annual Sock Drive. Blue barrels are in the church vestibule and the school entrance.

NOTE: Please look for socks with a wool blend and no cotton.

Socks will be donated to those in need through Transition Projects and Saint André Bessette.

Don't have time to go sock shopping? Or would you prefer we take your cash and purchase wool socks in bulk? Just scan the QR code at right, or drop off a donation at the Parish Office.



PETER ZISA
& FRIENDS

16TH ANNUAL

SEASON OF LIGHTS HOLIDAY CONCERT

SUNDAY, DECEMBER 3RD, 2023
2:00 PM MADELEINE OLD HISTORIC CHURCH

MUSIC FROM JAPAN, ISRAEL, BRAZIL, PERSIA,
AND THE U.S.A.!

World class virtuosity coming to Northeast Portland!

45th Parallel Universe
presents

CZECH PLEASE

Tuesday, December 5
The Old Madeleine Church
7:00 pm

Works by Dvorak, Martinu, and Zdenek Fibich.

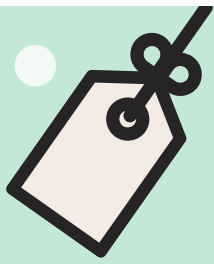


Purchase tickets at

45THPARALLELPDX.ORG



45TH PARALLEL
UNIVERSE



The Madeleine Giving Tree 2023

Benefits Children of Incarcerated Parents & Community Transition School

The tradition of The Madeleine Giving Tree will continue this year and the need has never been greater. This year we will be supporting two worthwhile and grateful organizations.

Northwest Family Services Children of Incarcerated Parents—

These children face countless barriers including abuse, neglect, homelessness and food insecurity, as well as having one or both parents incarcerated.

Community Transitional School—

CTS serves students ages 4-14 from Multnomah County who live in homeless and domestic violence shelters, cheap motels, on the floor of a friend's home and even inside of their cars. Some are from families that are on the brink of losing their housing; others have just recently managed to move into permanent housing. All children are in situations where poverty and uncertainty dominate much of their young lives. Please read the tags carefully for this group...due to their mobile nature, the tags indicate specific needs.

Tags have been hung on the tree in the Parish Hall driveway. Get there early... they get claimed very quickly!



SLEEP IN HEAVENLY PEACE BEDDING DRIVE

Through Christmas, Sleep in Heavenly Peace is accepting bedding donations at The Madeleine. Please look for the blue bins located in the church vestibule or bring your donations to the Parish Office during business hours.



SLEEP IN HEAVENLY PEACE

Sleep in Heavenly Peace has provided 300 beds to children in the Portland area. Many of those beds were built and delivered by Madeleine parishioners and provided with sheets, blankets and pillows from Madeleine bedding drives.

Bedding needs to be for twin size beds (not extra long, please) sheet sets, blankets and comforters, mattress protectors and pillows. All donations must be new and still in the original packaging.

Thank you Madeleine Community for the continued support!



JESUS CHRIST

THE KING OF THE UNIVERSE

Today's celebration of Jesus Christ, King of the Universe, is the crowning of the liturgical year. It reminds us that creation does not advance at random, but is proceeding toward a final destination: the definitive manifestation of Christ as Lord of history and of all creation. The conclusion of history will be God's eternal kingdom when all creation is restored to its original right relationships: sin into grace, fear into trust, death into resurrection.

Jesus proclaimed the simple yet radical message of God's new kingdom, which was his code word for the transformed reality where God rules as the center of meaning and the object of all action. By following Jesus' example we will discover how to realize his dream for a kingdom community by living now as God had wanted everyone to live since the time God first ordered creation—in right relationships with God and with one another that were grounded in love, expressed in justice and oriented to the well-being of all.

It would mean very little, however, if we believed Jesus was King of the Universe, but did not make him Lord of our lives. Everything is empty if we do not personally accept Jesus and if we do not also accept his way of being King. Jesus' kingdom invitation challenges us to notice God in our midst and make a commitment to relate to God. It challenges us to see the world as God does, evaluate it as God does and act in it as God does. It challenges us to link our hope for a new order with God's dream for the right kind of community. Finally, it challenges us to engage in the real cosmic power struggle between God and Satan, good and evil to reorder our world as God desires it to be.



THE SOLEMN FEAST OF CHRIST THE KING

Although there is much biblical evidence that Jesus was considered a royal figure, the liturgical celebration of Our Lord Jesus Christ, King of the Universe only began in 1925 when Pope Pius XI established it to reaffirm that Jesus is ruler over both creation and history. Originally, it was celebrated on the final Sunday of October, prior to All Saints Day. In 1969, to emphasize its importance, Pope Paul VI moved it to the last Sunday before Advent. So now the old liturgical year ends by celebrating Christ's kingship and the new year begins with Advent, when we await the coming of Christ to rule our hearts and lives.

SEASONS OF THE LITURGICAL YEAR

Advent begins the liturgical year on the fourth Sunday before Christmas. A season of hope as well as penance, Advent features the writings of the Old Testament prophets in its Mass readings.

Christmas begins with Christmas Day, goes through Epiphany and concludes with the Baptism of the Lord.

Lent is a 40 day preparation for Easter that focuses on fasting, prayer and almsgiving. Lent is a time to reflect on how well we are living out our baptism.

The Paschal or Easter Triduum (from the Latin, three days) begins with the Holy Thursday Mass of the Lord's Supper and continues until Easter evening.

The **Easter Season** extends from Easter Sunday through Pentecost Sunday. During this time, the Church reflects on the mystery of our redemption through the suffering, death and resurrection of Jesus.

Ordinary Time is the only liturgical season that comes in two sections. The first begins with the Baptism of the Lord and goes until Ash Wednesday. The second follows Pentecost and concludes with the Feast of Christ the King.

THE PARADOX OF JESUS AS CHRIST AND KING

In the Gospels we learn that joining Jesus' title of "Christ" (in Hebrew *messiah*, God's anointed one who would restore the right order of all creation as God wanted it to be) and "King" (an earthly ruler who would rule God's covenant people according to God's guidelines in the Law or *torah*) did not go together easily because Jesus had no political ambitions. For him there was no king but God, and Jesus' work was to establish God's kingly rule over the covenant people, over all the nations, and over all creation. So his followers had to be understand the idea of Jesus as king in a new and different way.

Pope Francis reminds us that "Jesus revealed himself as king only in the event of the Cross. On the cross Jesus' kingship shines forth in godly fashion: his royal throne is the wood of the Cross! With Christ, we know very well that the King whom we follow and who accompanies us is very special: he is a King who loves even to the Cross and who teaches us to serve and to love. And so we understand that it is in giving ourselves, in emerging from ourselves that we have true joy and that, with his love, God conquered evil.

"The Gospel in fact presents the kingship of Jesus as the culmination of his saving work, and it does so in a surprising way. History teaches us that kingdoms founded on the force of arms and on the abuse of power are fragile and sooner or later collapse. But the kingdom of God is founded on his love and is rooted in hearts, conferring peace, freedom and fullness of life upon those who embrace it."

OUR CHALLENGES OF FOLLOWING JESUS OUR KING

Everyone who chooses to make a faith commitment to follow Jesus as a Christian is invited to continue the work of Jesus to make this dream of a kingdom community into a reality, to realize it by living the kingdom way now.

We must use the Bible's stories, examples, instruction, wisdom, and information to discover God's ideas for a radically different type of social existence that so far has not been achieved: a community of non-domination, non-violence, and peaceful conflict resolution. To live this way ensures that Jesus' goal of building God's kingdom on earth will be accomplished.

Jesus not only invites us to follow him but to see the world as he does and thus live the way he does. Adopting his new kingdom worldview changes everything for those who accept it. The Good News about God's kingdom begun in Jesus' life, death and resurrection challenges our commonly accepted view of the world. What if things are not as we think they are? What if things could be different? What would our world be like if God really were recognized as its ruler? What then?





Timmco
INSURANCE

Brian Timm
Susan Ames | Derek Ames

1615 NE Broadway | 503-288-8818
www.timmco.com

AUTO | HOME | BUSINESS | LIFE

TIM WALTERS

Principal Broker



The most trusted name in Real Estate!

Committed to the NE Portland

Neighborhoods since 1991



503-545-1880 | TimWaltersRealtor@Gmail.com | TimWaltersPc.com



DDI *benefits*

Questions about Medicare?
We can help!

Emmett Dooney, '11
Licensed Medicare Agent
503.206.4080
medicare@ddibenefits.com



T.C. O'LEARY'S

a little irish
PUB

2926 NE Alberta Street
A little taste of Ireland!
www.tcolearys.com



Parishioners Tom, Siobhan
& Aine O'Leary

JOHN M. WYNN

ATTORNEY AT LAW

McGill, Kapranos & Wynn
Parishioner

Hollywood Professional Center, 3939 NE Hancock St., Ste. 305
jmwpxd@qwestoffice.net • 503-287-7333



LANCE MARRS

PRINCIPAL BROKER
503 701 5323
PORTLAND MODERN REAL ESTATE
LICENSED IN OREGON
PORTLANDMODERN.COM



PAUL MARRS

MORTGAGE LOAN OFFICER NMLS ID #5212
O:503 781 2114 B:503 994 8559
PMARRS@CANOPYMORTGAGE.COM
CANOPYMORTGAGE.COM/PAULMARRS
CANOPY MORTGAGE



Beaverton Branch Canopy Mortgage, LLC 12655 SW Center St. Beaverton, OR 97005 NMLS ID# 1359687



JOSÉ MESA AUTO WHOLESALE, LLC

"The mobile auto dealer who is always in your neighborhood."

YOUR DISCOUNT AUTO RETAILER SINCE 1992!

sales@josemesa.com 503-789-0438 www.josemesa.com

NEW • USED • BUY • SELL • LEASE • TRADE • CONSIGN • BROKER • APPRAISE



Dr. Phil Doleac, PC
Orthodontics for all ages
www.magic-smiles.com

Beaverton Portland Scappoose
503.644.7009 503.255.1694 503.543.4488

BUY OR SELL

**OUR TEAM
CAN HELP!**



Opt.
REAL ESTATE

JEFF KERSTEN
REALTOR®
503.720.9179
jeff@theopt.com



Retrouvaille
A Christian Peer Ministry
A LIFELINE FOR
HURTING MARRIAGES

Is your marriage tearing
you and your family apart?

Weekends held 3 times per year in Oregon

www.helpourmarriage.com
503-704-7382

Donated by Kevin & Carol McMenamin



Maria Fitzgerald
REAL ESTATE BROKER
503-680-9737

maria
fitzgerald
finding the home that fits you...

ANNE C. STEINER
ESTATE PLANNING
ELDER LAW ATTORNEY

503.946.8361 • 1915 NE Cesar Chavez Blvd.
PARISHIONER - anne.c.steiner@gmail.com

WILLS - TRUSTS - PROBATE
GUARDIANSHIP - CONSERVATORSHIP



Dr. John R. Lewis

Beaumont Vision

Beaumont Vision:
providing full-
service eyecare
for all ages,
including com-
prehensive
exams, glasses
and contacts

Stop by to view our unique
eyewear
Most insurances accepted

4331 NE Fremont St

Ph: 503-331-3937

**JOHN W. LOBO
PAINTING**

Custom Interior & Exterior
Creative Finishes
503-969-3337 CCB#89027
Licensed Bonded Insured



Sweetly Aimee, LLC
Custom Wedding and All-
Occasion Cakes and Desserts

Aimee Holzschuh
Parishioner & Parent
503.998.7368
www.SweetlyAimee.com



PAUL MYERS, Ph.D., LLC
PSYCHOTHERAPY, COUNSELING
& CONSULTING SERVICES

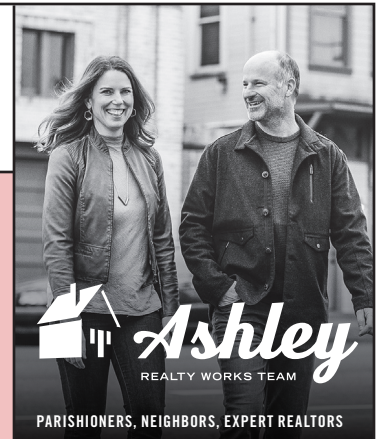
(503) 381-6685 paulmyersphdpdx@gmail.com
www.paulmyersphdpdx.com

THEORY
MORTGAGE

Beating Banks Daily

Brian DuVal
503-850-7667

NMLS 5912, NMLS 1848246



PARISHIONERS, NEIGHBORS, EXPERT REALTORS

Wick & Karoline Ashley
karoline@ashleyrealtyworks.com
(503) 819-4851
237 NE Broadway Suite 100

RE/MAX
equity group

Mark McGinnis

Parishioner, Parent
Mortgage Advisor

NMLS 98586

503-348-4917

"It's about service!"

mark.mcginis@neohomeloans.com



WILLAMETTE
FINANCIAL ADVISORS, LLC
PERSONALIZED ADVICE FROM TRUSTED ADVISORS

James M Jones

Financial Advisor, CFP®

Parishioner

Direct 503.284.9200

Office 503.7470306

jimj@wfinadv.com



Whole house remodels
• Kitchens • Bathrooms
• Basements • Additions
In-house architecture & design

Nathalie Roloff, Parishioner

503.245.0685
rolloffconstruction.com

4300 NE Fremont #130

CCB #140721
WA#ROLOFC1873KU



Bulletin Advertising: contact Rich Hammons • bulletin@themadeleine.edu • 503--281-5777