

## REMEMBERING OUR BELOVED DEAD

The month of November is traditionally the time in the Catholic Church when we remember those who have passed, both in the previous year and before. *See Page 3 for a note from Fr. Bonaventure on the celebrations of All Saints and All Souls.*

### Photos or Memorial Cards

Please bring photos or memorial cards of your deceased family members and friends to place on the Table of Remembrance. Drop them off at the Parish Office, or bring them with you when you attend Mass. Please include name and phone number on each.

### Remembrance Envelopes

In the back of the church, you'll find envelopes for remembering people who have passed away. Please print the names of the deceased you would like to be remembered.



## ALL SOULS SERVICE OF LIGHT

November 2, 6:30 pm

Our beautiful "Service of Light" is an opportunity to reflect and pray for deceased loved ones. Join us in the Main Church for a contemplative service of music and scripture as we come together in prayer and remembrance. Those attending are encouraged to bring a picture of their deceased for our Table of Remembrance.

**MASS SCHEDULE:** All Saints Day, November 1—9:00 am (School Mass) and 6:30 pm  
All Souls Day, November 2—8:00 am

## Twenty-Eighth Sunday in Ordinary Time

OUR READINGS CONTINUE to be rich in imagery about God, what God is like, what God does for us, and how God invites us. The images are ancient, but they still speak to those of us with these questions: Why are we here? What do we seek from God? What are our beliefs? What do we have in common with our ancestors? What does it mean to be called? As we listen to these readings, there are wonderful questions to challenge us as well as answers to deepen our faith.

## PRAY FOR OUR FAITHFULLY DEPARTED

- ▶ Zoe Coughlin-Glaser—Funeral Oct. 27, 11 am
- ▶ Debbie Laskowski—Funeral Nov. 17, 11:30 am
- ▶ Libby Hill

## PRAYER REQUESTS

For those who are ill, or in need of our prayers

- ▶ Claire Scharff
- ▶ Kitt Jordan

## WORSHIP & PRAYER

10/17, Tues, . . . . . Debbie Barsotti †  
10/18, Weds . . . . . Mary Anne Gram †  
10/19, Thurs. . . . . Madeleine Birthdays in October  
10/20, Fri . . . . . Alan Morrill †  
10/21, Sat . . . . . Virginia Richards †  
10/22, Sun, 8:00 am . The Madeleine Community  
10:00 am. . . . . Eva Hunerlach

## ARCHDIOCESAN SEMINARIAN APPEAL

Father B asks, "Do you know it costs \$50,000 a year to prepare a priest?"

### A note from Fr. Bonaventure:

*It's just over ten years since I finished seminary and was ordained to the priesthood. I have to be honest, and I admit my biases, but the life of the priesthood is the best thing in the world. And the best part of being a priest is being able to have a front row seat to witness God's love for His people, especially in the sacraments. It's costly...and I don't mean the many thousands of dollars, but the other more human costs. But it's also worth it.*

*I also think of the many times in my life, I've experienced God's love through a priest. God shows up in priestly encounters, if we're open to it, and that is worth everything.*



*I hope you will consider supporting these individuals who are willing to step into this role, which God is inviting them to prepare for. I can tell you for sure there are a lot of pressures driving them away...but some-*

*thing sustains them. If we're lucky, one of them will very likely be your pastor in a few years, or will celebrate a loved-ones wedding or funeral. If I'm lucky, one will give me last rites, when it's time.*

*They need our help. Please pray for them, but if you can help to cover the cost, that's a big help, too. I assure you, if they had to go \$250,000 into debt, they would never, on the salary of a priest, cover the cost!*

**TO DONATE:** ▶ Visit [www.themadeleine.edu/second-collections](http://www.themadeleine.edu/second-collections) (Designate "Seminarian Appeal.")  
▶ Or visit [supportourseminarians.church](http://supportourseminarians.church) (Please designate "2023 St. Mary Magdalene (The Madeleine), SEM Appeal" so we get credit.)  
▶ Or **drop off a check at Mass.** (Please note "Seminarian Appeal" in the memo.)

# Calendar This Week

## SUNDAY, OCTOBER 15

- 8:00 am: Mass—Church
- 10:00 am: Mass—Church  **ALSO LIVESTREAMS**
- 10:00 am: First Penance Class—Fireside Rm

## MONDAY, OCTOBER 16

- 10:00 am: Discerning Catholics—St. Catherine Rm
- 6:30 pm: FA Meeting—Fireside Rm

## TUESDAY, OCTOBER 17

- ▶ Nourish Our Neighbors (NON)—3rd Grade
- 8:00 am: Mass—Church
- 9:00 am: Adoration—Church
- 6:30 pm: The Madeleine Book Club—Fireside Rm

## WEDNESDAY, OCTOBER 18

- 8:00 am: Mass—Church
- 2:40 pm: Children's Choir Rehearsal—Church
- 5:30 pm: Chimes Rehearsal—Church
- 7:00 pm: Madeleine Choir Rehearsal—Church

## THURSDAY, OCTOBER 19

- 10:00 am: Book Club—Fireside Rm
- 2:00 pm: School Mass—Church
- 6:30 pm: SAC—Library

## FRIDAY, OCTOBER 20

- 8:00 am: Mass—Church

## SATURDAY, OCTOBER 21

- ▶ World Mission Sunday Collection
- 4:00 pm: Confession—Church
- 5:00 pm: Mass—Church
- 7:30 pm: In Mulberius Concert—Church

## SUNDAY, OCTOBER 22

- ▶ World Mission Sunday Collection
- 8:00 am: Mass—Church
- 10:00 am: Mass—Church  **ALSO LIVESTREAMS**
- 10:00 am: Penance Class—Fireside Rm
- 11:30 am: RCIA—St. Catherine Room
- 3:00 pm: In Medio Choir Concert—Church

### SAVE THE DATE

- ▶ **Madeleine Marketplace:** December 7
- ▶ **Advent begins:** December 3
- ▶ **Wine Tasting:** Postponed to Feb. 3, 2024
- ▶ **Ash Wednesday:** Feb. 14, 2024

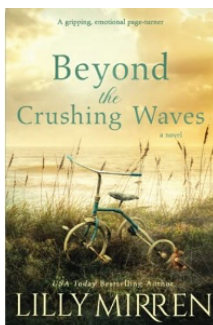
## PARISH LIFE

### IT'S NOT TOO LATE!

It's never too late, actually, to explore the Catholic faith or to consider joining the Catholic Church. Classes meet at 11:30 Sunday mornings (after 10 am Mass) in the St. Catherine Room. Registration forms and more information are available on the information table in the back of the Church. Contact Donna Mason at [rcia@themadeleine.edu](mailto:rcia@themadeleine.edu)

### BOOK CLUB NEWS

Our group of enthusiastic readers invites you to join us for discussion of *Beyond the Crushing Waves*, by Lilly Mirren. We will be meeting Tuesday evening October 17, 6:30 pm and Thursday morning October 19, 10:00 am in the Fireside Room. For further details and/or to sign up for one of these sessions, please contact MBC Ministry Coordinator [gypsyfrau47@yahoo.com](mailto:gypsyfrau47@yahoo.com) or 503-312-6834.



### ADORATION: LET US NEVER REFUSE TO GO

Pope St. John Paul II tells us: *“The Church and the world have a great need for Eucharistic worship. Jesus awaits us in this sacrament of love. Let us not refuse the time to go to meet him in adoration, in contemplation full of faith, and open to making amends for the serious offenses and crimes of the world. Let our adoration never cease.”* – John Paul II, quoted in the Catechism of the Catholic Church, p 348.

*Tuesday Adoration begins after 8 am Mass, ends at 2 pm*

### PART TIME POSITION: DISHWASHER

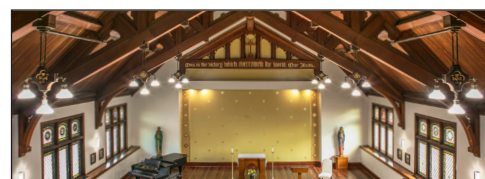
The Madeleine is hiring part-time Dishwashers to help out with events such as auctions, receptions, etc. Average is two or more events per month, usually evenings and weekends with an occasional week-day opportunity. For more information or to apply, contact My Schoning, Business Manager, 503-281-5777 ext. 114, or [mhoang@themadeleine.edu](mailto:mhoang@themadeleine.edu)

### FIRST PENANCE AND FIRST COMMUNION REGISTRATION OPEN

Registration for First Penance and First Eucharist is open for the 2023-24 school year. Classes will be held during the 10 am Mass and once class is complete, children will be brought to Mass to join their families about the time of the presentation of gifts. Email Rose Horton at [sac-prep@themadeleine.edu](mailto:sac-prep@themadeleine.edu), call 512-627-5568, or visit [www.themadeleine.edu/faithformation](http://www.themadeleine.edu/faithformation) for more information, to register and for the schedule.



Perhaps Jesus was not thinking about paper or plastic when he told his disciples to go and taking nothing with them. However, what we take with us to carry our groceries does make a difference when it comes to God's Creation. Over one million birds and 100,000 marine mammals and sea turtles die each year after having swallowed miscellaneous plastic articles or after having been caught in plastic. Why not take a reusable bag, sold in most grocery stores or community organizations? The marine fauna will thank you!



### Upcoming Concerts

**OC** = Old Madeleine Church    **MC** = Main Church

- ▶ **October 21, 7:30 pm MC** • In Mulberius • Songs of Loss & Lamentation • [inmulberibus.org](http://inmulberibus.org)
- ▶ **October 22, 3:00 pm MC** • In Medio • Muhly Meets Byrd • [inmediochoir.org](http://inmediochoir.org)
- ▶ **November 21, 7:00 pm OC** • 45th Parallel Universe • Romantique • [45thparallelpdx.org](http://45thparallelpdx.org)
- ▶ **December 10, 3:00 pm MC** • Bravo! Concerts Northwest • Handel's Messiah • [bravoconcerts.com](http://bravoconcerts.com)



In today's Gospel we hear Jesus say: *“Many are invited, but few are chosen.”* To give thanks for all that God has given to you, have you considered answering the call to help serve the poor by joining the Society of St. Vincent de Paul?   
 —Mary Clare O'Brien, 503-309-7639





## From Fr. Bonaventure: All Souls & All Saints

**A**s summer fades into fall, Halloween decorations go up in our neighborhoods. In the Church, our minds drift toward the memory of those who have gone before us. It's natural for us to pray for the dead. Liturgically, this is marked by two celebrations, All Saints Day, which the Church requires us to celebrate (a Holy Day of Obligation), and All Souls Day, a festival that captured the imagination of the people and has developed into the Day of the Dead—*dia de los muertos*—in some cultures. In popular American culture, this has become Halloween—the spooky day we remember all things scary (and cute: like Disney characters, or witty: like a Freudian slip, a nightgown with Freud quotes on it).

In these two celebrations, All Saints and All Souls, the drama of life after death and our eternal destiny is lived out: we're called and destined to be one of the "All Saints" but sometimes we need the help and mercy of the Body of Christ, and so we lift our prayers to the Father for "All Souls."

In order to encourage prayer for the faithful departed, the Church grants a special grace, an indulgence, which we can offer for those we love. I encourage you to consider paying a visit to a cemetery in the first week of November and to come to the Mass or Service of Light on All Souls Day, and pray for those who have gone before us. I'm certain that they are praying for us!

### For the Faithful Departed

A plenary indulgence, applicable only to the souls in purgatory, is granted to the faithful who,

- ▶ On any and each day from November 1 to 8, devoutly visit a cemetery and pray, if only mentally, for the departed;
- ▶ On All Souls' Day (or, according to the judgment of the ordinary, on the Sunday preceding or following it, or on the solemnity of All Saints), devoutly visit a church or an oratory and recite an Our Father and the Creed.

—Fr. Bonaventure

**All Saints Day, a Holy Day of Obligation, November 1:**  
9:00 am (School Mass) and 6:30 pm

**All Souls Day, November 2:**  
Mass at 8:00 am, Service of Light memorial prayer service at 6:30 pm

## WEEKLY MASS TIMES

### Regular Mass Times:

Tuesday, Wednesday, Friday . . . . . 8:00 am  
Thursday . . . . . School days: 2:00 pm  
Days school not in session: 8:00 am  
Saturday Vigil . . . . . 5:00 pm  
Sunday . . . . . 8:00 am, 10:00 am

**Penance** . . . . . Saturday, 4:00–4:30 pm

### PARISH OFFICE

**Hours** . . . . . Monday–Friday, 9:00 am–3:00 pm

**Phone:** 503-281-5777 . . . . . **Fax:** 503-281-0673

**School Office** . . . . . 503-288-9197

### PARISH STAFF

**Rev. Bonaventure Rummell**—Administrator  
fatherbonaventure@themadeleine.edu . . . ext. 111

**Deacon Mike O'Mahoney**—Permanent Deacon  
deaconmike@themadeleine.edu

**Tresa Rast**—School Principal  
trast@themadeleine.edu . . . . . 503-288-9197

**Darlene Maurer**—Pastoral Assistant  
dmaurer@themadeleine.edu . . . . . ext. 125

**Linda Scheruman**—Bookkeeper  
lscheruman@themadeleine.edu . . . . . ext. 119

**My Schoning**—Business Manager  
mhoang@themadeleine.edu . . . . . ext. 118

**Therese Fenzl**—Director of Spiritual Ministries  
tfenzl@themadeleine.edu . . . . . ext. 116

**Maria Manzo**—Director of Music  
mmanzo@themadeleine.edu . . . . . ext. 113

**Guy Allen**—Facilities Manager, Events Manager  
gallen@themadeleine.edu

**Gretchen Stevenson**—Office  
gstevenson@themadeleine.edu . . . . . ext. 112

**Julie Kupers**—Special Events  
jkupers@themadeleine.edu . . . 720-936-5635

**Janeen Reilly**—Parish Administrator  
jreilly@themadeleine.edu . . . . . ext. 110

**Rich Hammons**—Director of Communications  
rhammons@themadeleine.edu . . . . . ext. 129

### SACRAMENTS

**Funerals, Infant Baptism**—  
Darlene Maurer . . . . . ext. 125

**Marriages, Anointing of the Sick**—  
Fr. Bonaventure Rummell . . . . . ext. 111

**First Reconciliation, First Eucharist**—  
Rose Horton . . . . . sac-prep@themadeleine.edu

**RCIA**—Donna Mason . . . . . rcia@themadeleine.edu

**Confirmation**—Therese Fenzl . . . . . ext. 116

### COUNCILS & CONTACTS

**Pastoral Council**—Amy Moran . . . 617-470-7926

**Finance Council**—Jim Jones . . . . 503-284-3301

**Buildings & Grounds**—Erin Couch . . 503-281-9575

**School Advisory**—Tim Resch . . . . . 503-984-4607

**Facility Requests**—themadeleine.edu/facilities

**Maintenance Requests**—My Schoning  
mhoang@themadeleine.edu . . . . . ext. 114

**Knights of Columbus**—  
Dan O'Donnell . . . . . 503-440-9415

**Ministry Schedule**  
www.themadeleine.edu/minister-schedule

**Bulletin submissions due 5:00 pm Tuesday**  
Email to bulletin@themadeleine.edu



## SUPPORT THE MADELEINE AUCTION — PURCHASE RAFFLE TICKETS ONLINE!

Buying raffle tickets has always been a great way to support our parish school's auction, which goes to the general fund to help keep Catholic education affordable for families. But now we're pleased to offer them online, so ANYONE can buy them (well, anyone who's in the state of Oregon, that is). So visit [www.themadeleine.edu/raffle](http://www.themadeleine.edu/raffle) and buy your raffle tickets today! Just \$10 each


### RAFFLE PRIZES • \$10 PER TICKET

**GRAND PRIZE:** Option of \$4000 Cash or  
\$4000 Catholic School Tuition  
Voucher (Portland-area K-12)

**SECOND PRIZE:** \$750 REI Voucher

**THIRD PRIZE:** \$250 Amazon Gift Card

Need not be present to win. 4,500 tickets available. Drawing held at Castaway Portland, 1900 NW 18th Ave, Portland, OR 97209. Ticket drawn 11/4/2023 at approximately 8:30 pm. Cost \$10 per ticket. Winner responsible for applicable taxes. Restrictions may apply. Not redeemable for cash except as noted.

CAMP MADELEINE 2023 RAFFLE TICKET	
Name	_____
Phone	_____
E-mail	_____
Student Seller	_____
Raffle Ticket 0000	
Raffle Ticket 0000	
	
PROCEEDS BENEFIT THE MADELEINE SCHOOL <b>RAFFLE PRIZES</b>	
<b>GRAND PRIZE:</b> Option of \$4000 Cash or \$4000 Catholic School Tuition Voucher (Portland-area K-12)	
<b>SECOND PRIZE:</b> \$750 REI Gift Card	
<b>THIRD PRIZE:</b> \$250 Amazon Gift Card	
<small>Need not be present to win. 4,500 tickets available. Drawing held at Castaway Portland, 1900 NW 18th Ave, Portland, OR 97209. Ticket drawn 11/4/2023 at approximately 8:30 pm. Cost \$10 per ticket. Winner responsible for applicable taxes. Restrictions may apply. Not redeemable for cash except as noted.</small>	

**Buy tickets online: [www.themadeleine.edu/raffle](http://www.themadeleine.edu/raffle)**



## CATHOLIC HIGH SCHOOL OPEN HOUSES

Every year the Catholic high schools in our area host an Open House for prospective families. These events are wonderful opportunities for families to tour our campus, speak with teachers and administrators, talk with our students, and learn about the opportunities that we provide for our students. Dates for the 2023-24 Open Houses are as follows. For time and location information, visit the high schools' websites.

- ▶ **Sunday, October 15**—St. Mary's Academy
- ▶ **Sunday, October 22**—La Salle Catholic College Prep
- ▶ **Sunday, October 29**—Jesuit

## CATHOLIC FRIENDSHIP GROUP

The Catholic Friendship Group is for single Catholics ages 40 to 60 throughout the Archdiocese of Portland who are looking to grow in faith and fellowship! Gatherings are held every other week for Adoration, a talk and discussion on a prepared theme led by Fr. Joshua Clifton, and a social from 7:00-8:30pm at St. Birgitta Parish (11820 NW St. Helens Rd.). Recent topics have included Heresies and the 7 Sorrows of Mary devotional.

To learn more and for future topics, visit [www.catholicfriendshipgroup.com](http://www.catholicfriendshipgroup.com)

## HEALING THE WHOLE PERSON

**November 30–December 2, 2023**

Join Archbishop Sample on this journey to wholeness as we welcome Christ's divine love that brings the healing we ardently desire.

Healing the Whole Person (HWP) is the basis for Dr. Bob Schucht's best-selling book "Be Healed" and takes place only four times each year in parish settings across the US. Led by renowned speakers and authors Dr. Bob Schuchts, Sr. Miriam James Heidland SOLT, and Bart Schuchts, the uniquely engaging format will help you see and experience God's healing love through teaching, prayer, personal reflection, Adoration, worship, and the Sacraments. To register: [jpiihealingcenter.org/event/11-29-23-hwp/](http://jpiihealingcenter.org/event/11-29-23-hwp/)

## AUDIO/VIDEO MINISTRY NEEDS YOUR HELP!

**Need volunteers at Saturday 5:00 pm and Sunday 8:00 am Masses**

As we return to Mass each weekend, we are looking to include some of the "extras" we've had in the past... including the weekly use of our video screens for Breaking Bread references, videos and song lyrics.

**But we need help running them...especially at Saturday 5:00 pm Mass and Sunday 8:00 am Mass!** This is how you can help

Sending Forth

**5 pm, 8 am: Lead Me, Lord**  
BB630

**10 am: Now is the Time**  
BB520

Presentations run on a laptop using Powerpoint—you only have to run the presentations by advancing from screen to screen.

The presentations are already built...you don't need to edit or create them. Just run them. It's easy! Full training is included. Interested? Please contact Rich Hammons, [rhammons@themadeleine.edu](mailto:rhammons@themadeleine.edu)

## LOOKING FOR WAYS TO SERVE OUR COMMUNITY?

Are you interested in discovering a vibrant faith group that serves our local community in meaningful ways? Jesuit Volunteer EnCorps will support you in your commitment! We are a group, ages 40+, that meets monthly in-person. As a program of JVC Northwest, we explore our commitment to values such as social and ecological justice, community, and spirituality. We assist group members to explore volunteer options in our community.

If interested, call Karen Beal at (971) 353.6946 or apply at [www.jvencorps.org](http://www.jvencorps.org)

WRITTEN  
IN SECRET

7:00pm · Friday, November 3  
AUGUSTANA LUTHERAN CHURCH  
PORTLAND, OR

3:00pm · Sunday, November 5  
FIRST UNITED METHODIST CHURCH  
EUGENE, OR

IN MEDIO

In Medio presents  
the Byrd Ensemble

Featuring a new work  
by Nico Muhly and  
Thomas Tallis's 40-part  
*Spem in alium*.

MUHLY  
MEETS  
BYRD

3:00pm  
Sunday, October 22  
THE MADELEINE PARISH  
PORTLAND, OR

Reserve tickets at  
[INMEDIOCHOIR.ORG](http://INMEDIOCHOIR.ORG)

“

Let us start from the poor and we will discover that we all share an interior poverty, that all of us need the Spirit of God to free us from the spirit of the world, and that humility is the grandeur and fraternity is the true wealth of every Christian.”

—Pope Francis via X (Twitter)

@pontifex

## RECYCLING PROGRAMS AT THE MADELEINE

Marked collection bins in the breezeway facing 23rd Ave.

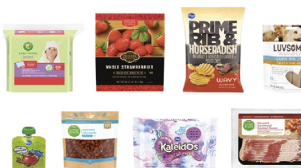
The Madeleine's Laudato Si' Circle and Care for Creation Ministry have joined with U. S. based recycler, Terracycle, to offer our parish, school, and community opportunities to responsibly recycle specific items (primarily plastics) not generally handled at curbside. Terracycle has added more manufacturers to its program, and in turn, we have expanded our recycling offerings. Here is a current listing of what we are collecting. Please keep this in mind:

- ▶ Do not include garbage or items not specifically mentioned in the descriptions.
- ▶ Empty containers of contents. No need to wash first; ensure packaging is dry.



### KROGER FLEXIBLE PLASTICS

All Kroger brand flexible plastic packaging can now be accepted. Includes Private Selection and Simple Truth brands as well.



### HAIR CARE APPLIANCES AND TOOLS

All types and brands of hair care tools and appliances, including hair dryers, straightening irons, curling irons, thermal brushes and mini tools.



### SWIFFER REFILLS



Swiffer only brands of Sweeper™ Dry, Wet, and XL Refills, WetJet Refills™, and Duster™ Refills.

### LATE JULY® SNACKS

All Late July® snack packaging as seen in these examples. Limited to Late July brand only.



### GILLETTE® AND VENUS RAZORS AND RAZOR BLADES

All brands of blades and razors (systems and disposable units, and replaceable-blade cartridge units), rigid plastic packaging, and flexible plastic bag packaging.



### ORAL CARE PRODUCTS

All brands of used or empty oral care products, including toothpaste tubes, tooth brushes, and dental floss containers.



### FOOD STORAGE

All brands of well-used plastic and glass food storage containers.



### AIR CARE PRODUCTS AND PACKAGING AND MR. CLEAN DEEP CLEANING MIST

All brands of air and home cartridges, air and home care plugs, air and home care trigger heads, and air and home care plastic and film packaging. No aerosol containers. Remove as much of remaining product as possible.



### CIGARETTE BUTTS, SANTA FE NATURAL TOBACCO COMPANY

All brands of fully extinguished cigarettes (and ashes) and tobacco products, including filters, plastic packaging, inner foil packaging, rolling paper, and loose tobacco pouches.



### OFFSITE RECYCLING OPPORTUNITIES FOR FAMILIES REDYPER DISPOSABLE DIAPERS

Subscription service for purchasing and recycling Redyper brand disposable diapers through Terracycle

### LOOP

Offers zero-waste packaging of everyday essentials (beauty, health and personal care, grocery, and household essentials) from leading brands (including Haagen-Dazs!) Details at [www.loopstore.com](http://www.loopstore.com)

Details on all programs at  
[www.themadeleine.edu/terracycle](http://www.themadeleine.edu/terracycle)



# THE MADELEINE OKTOBERFEST & PICNIC

## OKTOBERFEST & PICNIC: BRATS, BEER, FRIENDS AND SUNSHINE

It was a beautiful day as we celebrated our annual Oktoberfest & Picnic last Sunday. We had a wonderful turnout as folks from every portion of our community...longtime parishioners to brand-new school parents, and everyone in between...enjoyed great food, drink, friendship and fun.

Special thanks to Julie Kupers and her crew of volunteers for setup, cleanup and more. Kudos to the Knights of Columbus for cooking and keeping the perfectly grilled deliciousness stocked at the food table—and the suds flowing (appropriately!) at the beer table.

In all, just a lovely afternoon! Thanks to everyone who attended, worked, organized and enjoyed at the event.







**Timmco**  
INSURANCE

Brian Timm  
Susan Ames | Derek Ames

1615 NE Broadway | 503-288-8818  
www.timmco.com

AUTO | HOME | BUSINESS | LIFE

**TIM WALTERS**

Principal Broker



The most trusted name in Real Estate!

Committed to the NE Portland

Neighborhoods since 1991



503-545-1880 | TimWaltersRealtor@Gmail.com | TimWaltersPc.com



**DDI** benefits

Questions about Medicare?  
We can help!

Emmett Dooney, '11  
Licensed Medicare Agent  
503.206.4080  
medicare@ddibenefits.com



**T.C. O'LEARY'S**

a little irish  
PUB

2926 NE Alberta Street  
A little taste of Ireland!  
www.tcolearys.com



Parishioners Tom, Siobhan  
& Aine O'Leary

**JOHN M. WYNN**

ATTORNEY AT LAW

McGill, Kapranos & Wynn  
Parishioner

Hollywood Professional Center, 3939 NE Hancock St., Ste. 305  
jmwpxd@qwestoffice.net • 503-287-7333



**LANCE MARRS**

PRINCIPAL BROKER  
503 701 5323  
PORTLAND MODERN REAL ESTATE  
LICENSED IN OREGON  
PORTLANDMODERN.COM



**PAUL MARRS**

MORTGAGE LOAN OFFICER NMLS ID #5212  
O:503 781 2114 B:503 994 8559  
PMARRS@CANOPYMORTGAGE.COM  
CANOPYMORTGAGE.COM/PAULMARRS  
CANOPY MORTGAGE



Beaverton Branch Canopy Mortgage, LLC 12655 SW Center St. Beaverton, OR 97005 NMLS ID# 1359687



**JOSÉ MESA AUTO WHOLESALE, LLC**

"The mobile auto dealer who is always in your neighborhood."

**YOUR DISCOUNT AUTO RETAILER SINCE 1992!**

sales@josemesa.com 503-789-0438 www.josemesa.com

NEW • USED • BUY • SELL • LEASE • TRADE • CONSIGN • BROKER • APPRAISE



**Dr. Phil Doleac, PC**

Orthodontics for all ages  
www.magic-smiles.com

Beaverton Portland Scappoose  
503.644.7009 503.255.1694 503.543.4488

**BUY OR SELL**

**OUR TEAM  
CAN HELP!**



**Opt.**  
REAL ESTATE

**JEFF KERSTEN**  
REALTOR®  
503.720.9179  
jeff@theopt.com



**Retrouvaille**

A Christian Peer Ministry  
A LIFELINE FOR  
HURTING MARRIAGES

Is your marriage tearing  
you and your family apart?

Weekends held 3 times per year in Oregon

www.helpourmarriage.com  
503-704-7382

Donated by Kevin & Carol McMenamin



**Maria Fitzgerald**  
REAL ESTATE BROKER  
503-680-9737

**maria**  
fitzgerald  
finding the home that fits you...

**ANNE C. STEINER**  
ESTATE PLANNING  
ELDER LAW ATTORNEY

503.946.8361 • 1915 NE Cesar Chavez Blvd.  
PARISHIONER - anne.c.steiner@gmail.com

WILLS - TRUSTS - PROBATE  
GUARDIANSHIP - CONSERVATORSHIP



Dr. John R. Lewis

*Beaumont Vision*

*Beaumont Vision:  
providing full-  
service eyecare  
for all ages,  
including com-  
prehensive  
exams, glasses  
and contacts*

Stop by to view our unique  
eyewear

Most insurances accepted

4331 NE Fremont St

Ph: 503-331-3937

**JOHN W. LOBO  
PAINTING**

Custom Interior & Exterior  
Creative Finishes  
503-969-3337 CCB#89027  
Licensed Bonded Insured



**Sweetly Aimee, LLC**  
Custom Wedding and All-  
Occasion Cakes and Desserts

Aimee Holzschuh  
Parishioner & Parent  
503.998.7368  
www.SweetlyAimee.com



**PAUL MYERS, Ph.D., LLC**  
PSYCHOTHERAPY, COUNSELING  
& CONSULTING SERVICES

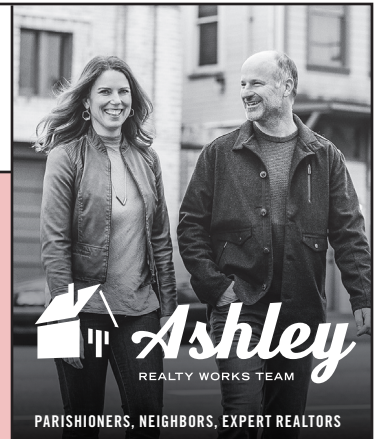
(503) 381-6685 paulmyersphdpdx@gmail.com  
www.paulmyersphdpdx.com

**THEORY**  
MORTGAGE

Beating Banks Daily

Brian DuVal  
503-850-7667

NMLS 5912, NMLS 1848246



PARISHIONERS, NEIGHBORS, EXPERT REALTORS

**Wick & Karoline Ashley**  
karoline@ashleyrealtyworks.com  
(503) 819-4851  
237 NE Broadway Suite 100

**RE/MAX**  
equity group

**Mark McGinnis**

Parishioner, Parent  
Mortgage Advisor

NMLS 98586

503-348-4917

"It's about service!"



mark.mcginis@neohomeloans.com



**WILLAMETTE**  
FINANCIAL ADVISORS, LLC  
PERSONALIZED ADVICE FROM TRUSTED ADVISORS

**James M Jones**

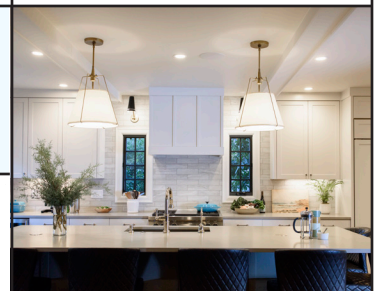
Financial Advisor, CFP®

Parishioner

Direct 503.284.9200

Office 503.7470306

jimj@wfinadv.com



Whole house remodels  
• Kitchens • Bathrooms  
• Basements • Additions  
In-house architecture & design

Nathalie Roloff, Parishioner

503.245.0685  
rolloffconstruction.com  
4300 NE Fremont #130



CCB #140721  
WA#ROLOFC1873KU

Bulletin Advertising: contact Rich Hammons • bulletin@themadeleine.edu • 503--281-5777