



High Tea with Fr. Mike

Fr. Mike cordially invites all parishioners age 70 and older to High Tea in The Old Madeleine Church

Tuesday, May 16 • Noon-2:00 pm

No Charge • R.S.V.P. by May 8 • www.themadeleine.edu/tea
or by phone to the Parish Office at 503-281-5777

Transportation available...let us know when you RSVP or call

Congratulations to our 2023 Confirmandi

This weekend, 39 youth from The Madeleine receive the Sacrament of Confirmation from Bishop Smith, including those in Seventh and Eighth Grade newly eligible this year. Please pray for and congratulate these young Catholics as they embody the spirit of our future church.

Sloane Bargovan

Declan Carthy

Gavin Diani

Anne LaBarca

Kieran Lowney

Emma Moran

Evelyn Ratigan

Ines Santos

Rory Steiner

Finneas Thompson

Quinn Whalen

Ellie Wikander

Landon Bargovan

William Burke

Griffin Chandler

Lucy Chandler

Charles Cooper

Donald Jozsef Eppley

Andrew Gehred

Luke Glavan

Elie Harpster

Lucy Krug

Mia LaBarca

William Naugler

Adeline Johnson

Ian Ratigan

Amelia Ryan

Siena Samuelson

Gillian Beaulieu

Faye Doherty

Aidan Lawler

Maxwell Merrifield

Siddharth Modha

Kyle Olson

Stella Resch

Hayden Shoemaker

Roxanne Thompson

Sienna Vuong

Theodore Wilson

Fourth Sunday of Easter

Today's Gospel focuses on Jesus' identity as the shepherd using the familiar Hebrew Scripture imagery. Jesus is both the gate to the sheepfold and the shepherd willing to suffer for his flock. The invitation is to follow this wounded shepherd, knowing that we have been healed precisely by his wounds. In a world obsessed with power and strength, what image would motivate someone to follow him?

Welcome Bishop Smith

We are honored to have Bishop Peter L. Smith celebrating the 10:00 am Mass with us this Sunday. We welcome him and are grateful for his visit.

PRAY FOR OUR FAITHFULLY DEPARTED

▶ Pamela Wiggin

PRAYER REQUESTS

For those who are ill, or in need of our prayers

▶ Mason Lugar

▶ Jean Lynch

▶ Chadd Garvens

WORSHIP & PRAYER

05/02, Tues Jerry Barnett †

05/03, Weds Barbara Dunn †

05/04, Thurs Boris Georgeff †

05/05, Fri Marie Hong Tran †

05/06, Sat Dick Stetson †

05/07, Sun, 8:00 am... The Madeleine Community
10:00 am..... Sylvia Manzo †

Calendar This Week

SUNDAY, APRIL 30

8:00 am: Mass—Church

8:45 am: RCIA—St. Catherine Room

10:00 am: First Eucharist Class—Fireside Rm

10:00 am: Confirmation Mass—Church

 **ALSO LIVESTREAMS**

11:30 am: Laudato Si'—St. Catherine Room

3:00 pm: Cappella Romana, Ivan Moody Greek Liturgy concert—Church

MONDAY, MAY 1

6:30 pm: FA Meeting—Fireside Rm

TUESDAY, MAY 2

8:00 am: Mass—Church

9:00 am: Adoration—Church

7:00 pm: Knights of Columbus—Fireside Rm

WEDNESDAY, MAY 3

8:00 am: Mass—Church

2:45 pm: Children's Choir—Church

6:30 pm: Pastoral Council—Zoom

7:00 pm: Madeleine Choir—Church

7:00 pm: Safety and Security—Fireside Rm

THURSDAY, MAY 4

2:00 pm: School Mass

7:00 pm: 45th Parallel Concert—Old Church

FRIDAY, MAY 5

Early Dismissal-Conferences

8:00 am: Mass—Church

SATURDAY, MAY 6

5:00 pm: Mass—Church

SUNDAY, MAY 7

8:00 am: Mass—Church

10:00 am: Mass—Church  **ALSO LIVESTREAMS**

12:00 pm: In Medio Recording—Church

3:00 pm: Screening of "The Letter"—Old Church

SAVE THE DATE

► **The Letter Screening:** May 7

► **High Tea:** May 16

► **Prayer Walk for Climate Justice:** May 20

► **First Communion Mass:** May 21

► **Wine Tasting:** August 26

► **Parish Picnic/Oktoberfest:** October 8

► **Madeleine Marketplace:** December 7

PARISH LIFE

SAFETY & SECURITY COMMITTEE: MAY 3

The Madeleine Safety & Security Committee's next meeting is scheduled for Wednesday, May 3 from 7 to 8 pm, in the Fireside Room. Appropriate COVID precautions will be followed to ensure the health and well-being of everyone in attendance.

The Madeleine Safety & Security Committee serves in an advisory capacity, supporting the efforts of the school and the Pastoral Council to provide a safe and secure faith experience. The Committee is currently drafting an Emergency Action Plan, providing a framework for preparedness planning, decision-making, and emergency response to a disaster, pandemic, or other critical events.

The Committee welcomes new members from diverse fields and backgrounds to enrich our discussion and broaden our vision in our efforts to provide for the safety of our Madeleine School children, parents and parishioners. If you have an interest in becoming a member, or are looking for more information, please contact Dan O'Brien, Safety & Security Committee Chair, at safety@themadeleine.edu or visit our web page: www.themadeleine.edu/safety

CHILDREN'S LITURGY

After almost a 3-year hiatus, we are bringing back Children's Liturgy of the Word at The Madeleine on the second Sunday of each month. We welcome Pre-K through 5th graders to join our ministry in teaching the Sunday scriptures on an age appropriate level. The first scheduled CLW will be Sunday, May 14, at our 10:00 am Mass, followed by Sunday, June 11. We will pause the ministry for the summer break, but resume in September. We are also in need of more volunteers to join the ministry. If you are interested in learning more, please reach out to cochrane.colette@gmail.com

BOOK CLUB NEWS

We cordially invite you to join our group of enthusiastic readers.



We meet monthly to discuss some very excellent books and would love to have you participate. To be added to our email list or for additional details, please contact: MBC Ministry Coordinator Gretchen Stevenson: gypsyfrau47@yahoo.com

MOTHER'S DAY BABY BOTTLE DRIVE

This year, the Knights of Columbus are again doing their annual Baby Bottle Drive for Mother and Child. Mother and Child Education Center appreciates the support of The Madeleine community in helping their efforts to assist prospective and new parents with their children. Mother and Child provides no-cost pregnancy tests and connects pregnant moms and dads with resources, diapers, baby clothing, maternity clothes, and support.

Baby bottles will be available after the Masses starting the weekend of April 29 and 30th to collect spare change and donations. Bottles can be returned on Mother's Day, May 14 after the Masses. Or you can scan the QR code to make a secure contribution with your credit card or debit card.



2023 ARCHBISHOP'S CATHOLIC APPEAL

Help grow hope, education, and faith through a donation to the Archbishop's Catholic Appeal. More than 22 life-changing ministries answering the needs of our neighbors, friends, and family are supported through your generosity. To donate, or to view Archbishop Sample's video message, visit JesusChangesEverything.church, or call (503) 233-8336. Be sure to choose "2023 St. Mary Magdalene (The Madeleine)" as your parish so we receive credit for your donation.

Do you have some special bottles of wine to donate for our Wine Tasting in August?
jreilly@themadeleine.edu



Today, we celebrate **Good Shepherd Sunday** where we reflect on Jesus' care and love of us and hear his words, "I came so that they may have life and have it more abundantly." By your gift to the Society of St. Vincent de Paul you will reveal the love of the "Good Shepherd" to your suffering brothers and sisters.
—Mary Clare O'Brien, 503-309-7639

PARISH LIFE

CELEBRATE MOTHERS IN MAY!

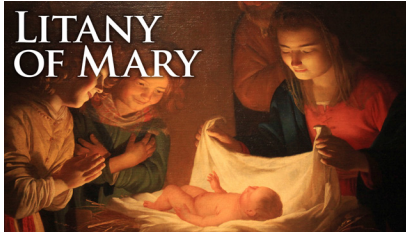
Upload mother & child photos to www.themadeleine.edu/mothers

A May tradition at The Madeleine: celebrating the Month of Mary and Mother's Day in a special way!

Each weekend beginning May 6-7, we will show a slideshow of mothers and children sent in from The Madeleine Community. The photos will show both in the church at all Masses and on our livestream.

We are starting over—all new photos!

This year, again, we're making a fresh start, a blank canvas. So even if you've sent



us a photo before, please send a new one this year.

Submissions can be either a photo of mother and child (children), or a photo of mothers and their mothers. Please send us just one photo of a mother/child combo

per family grouping, as we want to have time to show all our photos.

Send photos by May 2

Upload your photos to our website at www.themadeleine.edu/mothers

Moody's music is "like jeweled light flooding the space."
LOS ANGELES TIMES

IVAN MOODY
GREEK LITURGY
THE DIVINE LITURGY OF ST. JOHN CHRYSOSTOM

SATURDAY 29 APRIL 2023, 8:00 P.M.
St. Mary's Cathedral, NW PORTLAND



SUNDAY 30 APRIL 2023, 3:00 P.M.
The Madeleine Parish, NE PORTLAND

Composer Ivan Moody (also an Orthodox priest) is one of the world's most important composers of modern Orthodox music, and a regular collaborator with Cappella Romana for over 20 years. **This setting of the Greek Liturgy inscribes Byzantine chants on ethereal clouds of sound.**

Greek Liturgy was commissioned by Dr. Peter Jermihov, who will conduct these NW premiere performances. Moody's work aligns his deep compositional gifts with the chant traditions that have come before.

Conducted by Peter Jermihov, with the priest's intonations sung by Eleftherios Chasanidis, new protopsaltis of the Greek Orthodox Cathedral of the Holy Trinity in New York.

cappellaromana.org

Parishioners of the Madeleine save 30% in Sections A & B in advance by using the discount code "MADELINE"

45th Parallel Universe presents

HORNS APLENTY

Arcturus Quintet

May 4 | 7:00 pm
The Madeleine

Delectable works for wind quintet (and English horn!) that will charm you, featuring music from the very early days of the wind quintet's formation as a genre.

Damase: Variations
Villa-Lobos: Quintet
Reinecke: Sextet



45thparallelpdx.org

45TH PARALLEL UNIVERSE

WEEKLY MASS TIMES

Regular Mass Times:

Tuesday, Wednesday, Friday 8:00 am
Thursday No School: 8:00 am
During School: 2:00 pm
Saturday Vigil 5:00 pm
Sunday 8:00 am, 10:00 am

► Livestream 10:00 am Sunday
at youtube.com/themadeleineparish

Penance . . . By appointment; call Parish Office

PARISH OFFICE

Hours Monday–Friday, 10:00 am–3:00 pm

Phone: 503-281-5777 **Fax:** 503-281-0673

School Office. 503-288-9197

PARISH STAFF

Rev. Mike Biewend—Pastor
fathermike@themadeleine.edu ext. 111

Deacon Mike O'Mahoney—Permanent Deacon
deaconmike@themadeleine.edu

Carol Glasgow—School Principal
cglasgow@themadeleine.edu . . . 503-288-9197

John Garrow—Business Manager
jgarrow@themadeleine.edu ext. 118

My Schoning—Assistant Business Manager
mhoang@themadeleine.edu ext. 118

Darlene Maurer—Pastoral Assistant
dmaurer@themadeleine.edu ext. 125

Therese Fenzl—Director of Spiritual Ministries
tfenzl@themadeleine.edu ext. 116

Maria Manzo—Director of Music
mmanzo@themadeleine.edu ext. 113

Guy Allen—Events Manager
gallen@themadeleine.edu

Gretchen Stevenson—Office
gstevenson@themadeleine.edu ext. 112

Julie Kupers—Special Events
jkupers@themadeleine.edu . . . 720-936-5635

Janeen Reilly—Parish Administrator
jreilly@themadeleine.edu ext. 110

Terry Silva—Facilities Support
tsilva@themadeleine.edu ext. 117

Rich Hammons—Director of Communications
rhammons@themadeleine.edu ext. 129

SACRAMENTS

Marriages, Funerals, Anointing of the Sick—
Fr. Mike ext. 111

Infant Baptism—Darlene Maurer ext. 125

First Reconciliation, First Eucharist—
Rose Horton sac-prep@themadeleine.edu

RCIA—Christi Bohmbach, rcia@themadeleine.edu

Confirmation—Fr. Mike ext. 111

COUNCILS & CONTACTS

Pastoral Council—Meg Scharle

Finance Council—Jim Jones 503-284-3301

Buildings & Grounds—Erin Couch . . . 503-281-9575

School Advisory—Tim Resch 503-984-46072

Facility Requests—themadeleine.edu/facilities

Maintenance Requests—John Garrow
jgarrow@themadeleine.edu ext. 118

St Vincent de Paul (Food, utility, rent assistance)
Mary Clare O'Brien 503-309-7639

Ministry Schedule
www.themadeleine.edu/minister-schedule

Bulletin submissions due 5:00 pm Tuesday.
Email to bulletin@themadeleine.edu

PRAYER WALK FOR CLIMATE JUSTICE

Saturday, May 20 • 10:00 am

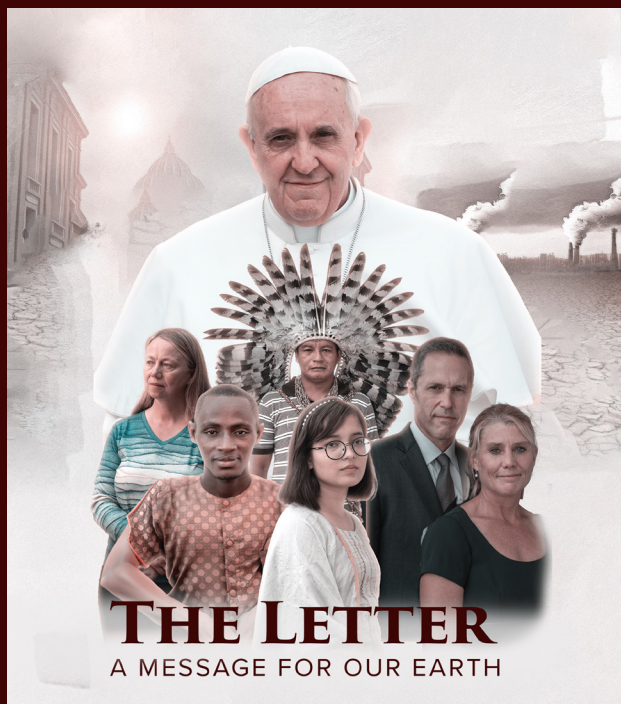
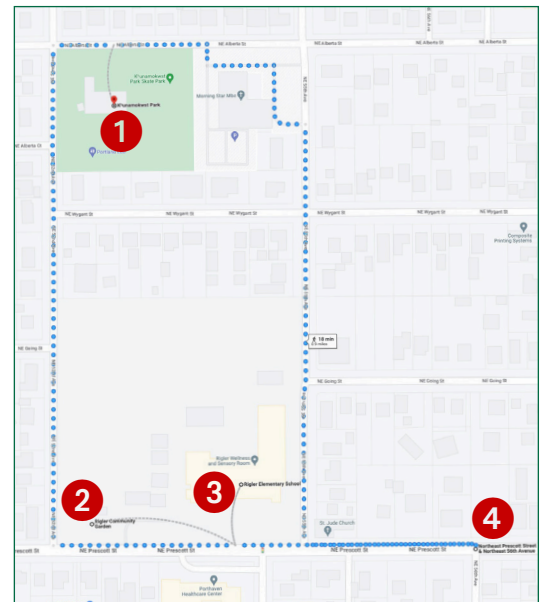
With this walk, we work to raise awareness of issues impacted by climate change and featured in the documentary *The Letter: A Message for Our Earth* (free screenings available, see below).

The walk is composed of four stations with specific emphasis on affected groups. Each station will include an opening prayer, brief description of how the group is impacted, a parable, and a concluding prayer. We will gather afterward at the park to continue the discussions. Feel free to bring a picnic lunch; cookies and drinks provided. Bring the entire family to this rain-or-shine event.

STATIONS

- 1 **Indigenous People** • Khunamokwst Park, 5200 NE Alberta St.
- 2 **Nature/Wildlife** • 52nd & Prescott (a community garden and a grove of native trees)
- 3 **Youth** • Rigler School, 54th & Prescott (location of a DEQ clean air monitoring device)
- 4 **Climate Refugees** • 56th & Prescott (site of a new low-income housing unit and home to a percentage of Native Americans)

Walking is involved; total distance approx. 1 mile.



Join us to experience *The Letter: A Message for Our Earth*, an award-winning documentary that focuses on a letter written by Pope Francis to everyone on the planet, and an encounter with a small group of people that gave them hope.

It will do the same for you

Regardless of your faith tradition, *The Letter* teaches us how spiritual values call us to take action on the planetary crisis.

Sunday, May 7 • 3:00 pm
The Old Madeleine Church

After the screening will be a facilitated discussion of the film.

LAUDATO SI' WEEK

May 21–28,
with activities on May 7 and May 20

A Movie, a Prayer Walk, and a Call to Action

Laudato Si' Week is May 21-28, 2023, and the theme, "Hope for the Earth, Hope for Humanity," provides inspiration for healing our planet. This is the eighth anniversary of the release of Pope Francis' encyclical ("letter"), *Laudato Si': On Care for Our Common Home*. This letter is a moral document addressed to everyone on the planet, and is an emphatic call to put our faith into action for the elimination of global indifference to climate injustices. We invite you to join us for two special events commemorating Laudato Si' Week.

Sunday, May 7, 2023, 3:00 pm, The Old Madeleine Church—Screening of the movie, "The Letter: A Message for Our Earth." Both entertaining and provocative, the movie highlights people from around the world whom Pope Francis invites to the Vatican to share their fears, hopes, and dreams for the future of our planet. They represent the Indigenous, Wildlife, Youth, and Climate Refugee communities. The stories and cinematography will captivate and cause you to think more broadly—locally and globally—about how to tread lightly on our ailing planet. The movie is appropriate for all ages and will be followed by a brief facilitated discussion.

Saturday, May 20, 2023, 10:00 am., Prayer Walk for Climate Justice—The walk begins and ends at Khunamokwst Park, 5200 NE Alberta Street. Consciously selected, the name Khunamokwst is a Chinook wawa name meaning "together," and is Portland Parks and Recreation's first site to enjoy a name indigenous to the land it sits on.

The one-mile walk is on flat surfaces, sidewalks, and less-traveled side streets. Based on the movie, "The Letter," we will walk to specific "stations" representing the four communities highlighted in the movie and for whom climate change is both a threat and a reality. Each station will begin with a prayer, followed by a brief description of how the featured community has been affected by climate change. A speaker representing that community will then share a short "parable" or story of their experience with climate change, and will end with a closing prayer. Each station will bring to life the stories of our times as we literally "walk in their shoes" and imagine a world devoid of a promising future. Clergy from The Madeleine, St. Andrew, and Holy Redeemer will be walking with us. The walk is not exclusive to Catholics; like the encyclical and movie, it is inclusive and welcoming of all faiths and spiritual beliefs. The walk will conclude at Khunamokwst Park with refreshments. You are invited to bring a picnic lunch to enjoy afterwards while exploring the park. Sponsored by the parishes of The Madeleine, St. Charles, St. Andrew, and Holy Redeemer, we will walk rain or shine. Just in case, we have reserved a small covered area of the park for our gathering.

Through these events may we be ever vigilant in our work to actively care for all of God's creation.

RECYCLING PROGRAMS AT THE MADELEINE

Marked collection bins in the breezeway facing 23rd Ave.

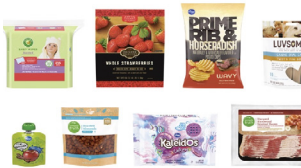
The Madeleine's Laudato Si' Circle and Care for Creation Ministry have joined with U. S. based recycler, Terracycle, to offer our parish, school, and community opportunities to responsibly recycle specific items (primarily plastics) not generally handled at curbside. Terracycle has added more manufacturers to its program, and in turn, we have expanded our recycling offerings. Here is a current listing of what we are collecting. Please keep this in mind:

- ▶ Do not include garbage or items not specifically mentioned in the descriptions.
- ▶ Empty containers of contents. No need to wash first; ensure packaging is dry.



KROGER FLEXIBLE PLASTICS

All Kroger brand flexible plastic packaging can now be accepted. Includes Private Selection and Simple Truth brands as well.



HAIR CARE APPLIANCES AND TOOLS

All types and brands of hair care tools and appliances, including hair dryers, straightening irons, curling irons, thermal brushes and mini tools.



SWIFFER REFILLS



Swiffer only brands of Sweeper™ Dry, Wet, and XL Refills, WetJet Refills™, and Duster™ Refills.

LATE JULY® SNACKS

All Late July® snack packaging as seen in these examples. Limited to Late July brand only.



ORAL CARE PRODUCTS

All brands of used or empty oral care products, including toothpaste tubes, tooth brushes, and dental floss containers.



FOOD STORAGE

All brands of well-used plastic and glass food storage containers.



GILLETTE® AND VENUS RAZORS AND RAZOR BLADES

All brands of blades and razors (systems and disposable units, and replaceable-blade cartridge units), rigid plastic packaging, and flexible plastic bag packaging.



CIGARETTE BUTTS, SANTA FE NATURAL TOBACCO COMPANY

All brands of fully extinguished cigarettes (and ashes) and tobacco products, including filters, plastic packaging, inner foil packaging, rolling paper, and loose tobacco pouches.



BIC WRITING INSTRUMENTS AND PACKAGING

All brands of empty writing instruments, glue sticks, water-color dispensers, highlighters, paint sets, and flexible packaging.



OFFSITE RECYCLING OPPORTUNITIES FOR FAMILIES REDYPER DISPOSABLE DIAPERS

Subscription service for purchasing and recycling Redyper brand disposable diapers through Terracycle

LOOP

Offers zero-waste packaging of everyday essentials (beauty, health and personal care, grocery, and household essentials) from leading brands (including Haagen-Dazs!) Details at www.loopstore.com

Details on all programs at www.themadeleine.edu/terracycle

The Madeleine Care for Creation

ANNUAL E-WASTE RECYCLING EVENT

A persistent drizzle didn't keep The Madeleine and our NE Portland compatriots from bringing in tons and tons of electronic waste for our annual event. We filled 2 ½ Green Century Recycling panel trucks with 26 cardboard totes (see right) of electronic waste—an estimated 26,000 lbs. (13 tons!).

In addition, we nearly filled up the Ridwell van with plastic clamshells, and collected more than 50 boxes of well-worn athletic shoes to be ground up at Nike! Thanks to Darlene Maurer and her crew for making this event such an overwhelming success!



PARISH LIFE

SLEEP IN HEAVENLY PEACE BEDDING DRIVE

Through the month of May, Sleep in Heavenly Peace is accepting bedding donations at The Madeleine. Please look for the blue bins located in the vestibule.

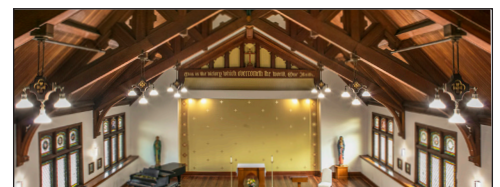
Sleep in Heavenly Peace has provided 430 beds (with 60 requests pending) to children in the Portland area. Many of those beds were built and delivered by Madeleine parishioners and provided with sheets, blankets and pillows from Madeleine bedding drives. We love having this special community on our team!

Items needed include twin sheets sets, twin size blankets and comforters, mattress protectors (no extra long please) and pillows. All donations must be new and still in the original packaging.

Thank you to The Madeleine Community for the continued support!



SLEEP IN HEAVENLY PEACE



Upcoming Concerts

Performances in The Old Madeleine Church unless noted

- ▶ **April 30, 3:00 pm** • Capella Romana • Ivan Moody: Greek Liturgy • Main Church • cappellaromana.org
- ▶ **May 4, 7:00 pm** • 45th Parallel Universe • Horns Aplenty • 45thparallelpdx.org
- ▶ **May 13, 7:00 pm** • Madeleine Choir Festival Concert • Main Church
- ▶ **May 21, 3:00 pm** • Bravo! Northwest • Then Sing We All. Jazz Cantina • bravoconcerts.com
- ▶ **May 25, 7:00 pm** • 45th Parallel Universe • Franz and PDQ • 45thparallelpdx.org



Timmco
INSURANCE

Brian Timm
Susan Ames | Derek Ames

1615 NE Broadway | 503-288-8818
www.timmco.com

AUTO | HOME | BUSINESS | LIFE

TIM WALTERS

Principal Broker



The most trusted name in Real Estate!

Committed to the NE Portland

Neighborhoods since 1991



503-545-1880 | TimWaltersRealtor@Gmail.com | TimWaltersPc.com



DDI *benefits*

Questions about Medicare?
We can help!

Emmett Dooney, '11
Licensed Medicare Agent
503.206.4080
medicare@ddibenefits.com



T.C. O'LEARY'S

a little irish
PUB

2926 NE Alberta Street
A little taste of Ireland!
www.tcolearys.com



Parishioners Tom, Siobhan
& Aine O'Leary

JOHN M. WYNN

ATTORNEY AT LAW

McGill, Kapranos & Wynn
Parishioner

Hollywood Professional Center, 3939 NE Hancock St., Ste. 305
jmwpxd@qwestoffice.net • 503-287-7333



LANCE MARRS

PRINCIPAL BROKER

503.701.5323

PORTLAND MODERN REAL ESTATE

LICENSED IN OREGON

PORTLANDMODERN.COM



PAUL MARRS

MORTGAGE LOAN OFFICER NMLS ID #5212

O:503.781.2114 B:503.994.8559

PMARRS@CANOPYMORTGAGE.COM

CANOPYMORTGAGE.COM/PAULMARRS

CANOPY MORTGAGE

Beaverton Branch Canopy Mortgage, LLC 12655 SW Center Street Beaverton OR 97005 NMLS ID #1359687



JOSÉ MESA AUTO WHOLESALE, LLC

"The mobile auto dealer who is always in your neighborhood."

YOUR DISCOUNT AUTO RETAILER SINCE 1992!

sales@josemesa.com 503-789-0438 www.josemesa.com

NEW • USED • BUY • SELL • LEASE • TRADE • CONSIGN • BROKER • APPRAISE



Dr. Phil Doleac, PC

Orthodontics for all ages
www.magic-smiles.com

Beaverton Portland Scappoose
503.644.7009 503.255.1694 503.543.4488

BUY OR SELL

**OUR TEAM
CAN HELP!**



Opt.
REAL ESTATE

JEFF KERSTEN
REALTOR®
503.720.9179
jeff@theopt.com



Retrouvaille

A Christian Peer Ministry
A LIFELINE FOR
HURTING MARRIAGES

Is your marriage tearing
you and your family apart?

Weekends held 3 times per year in Oregon

www.helpourmarriage.com
503-704-7382

Donated by Kevin & Carol McMenamin

DOSIER CONSTRUCTION

Kitchen & Bathroom Remodels

503-985-9982

Austin Dosier, Parishioner

austin@dosierconstruction.com OR CCB 215259

ANNE C. STEINER

ESTATE PLANNING
ELDER LAW ATTORNEY

503.946.8361 • 1915 NE Cesar Chavez Blvd.
PARISHIONER - anne.c.steiner@gmail.com

WILLS - TRUSTS - PROBATE
GUARDIANSHIP - CONSERVATORSHIP



Dr. John R. Lewis

Beaumont Vision

*Beaumont Vision:
providing full-
service eyecare
for all ages,
including com-
prehensive
exams, glasses
and contacts*

Stop by to view our unique
eyewear

Most insurances accepted

4331 NE Fremont St

Ph: 503-331-3937

**JOHN W. LOBO
PAINTING**

Custom Interior & Exterior
Creative Finishes
503-969-3337 CCB#89027
Licensed Bonded Insured



Sweetly Aimee, LLC
Custom Wedding and All-
Occasion Cakes and Desserts

Aimee Holzschuh
Parishioner & Parent
503.998.7368

www.SweetlyAimee.com



PAUL MYERS, Ph.D., LLC

PSYCHOTHERAPY, COUNSELING
& CONSULTING SERVICES

(503) 381-6685 paulmyersphdpdx@gmail.com
www.paulmyersphdpdx.com

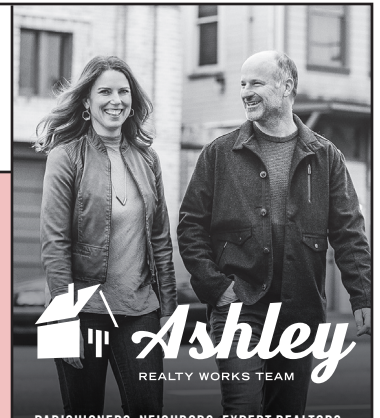


**THEORY
MORTGAGE**

Beating Banks Daily

Brian DuVal
503-850-7667

NMLS 5912, NMLS 1848246



PARISHIONERS, NEIGHBORS, EXPERT REALTORS

Wick & Karoline Ashley

karoline@ashleyrealtyworks.com

(503) 819-4851

237 NE Broadway Suite 100

RE/MAX
equity group

Mark McGinnis

Parishioner, Parent
Mortgage Advisor

NMLS 98586

503-348-4917

"It's about service!"



mark.mcginis@neohomeloans.com



**WILLAMETTE
FINANCIAL ADVISORS, LLC**
PERSONALIZED ADVICE FROM TRUSTED ADVISORS

James M Jones

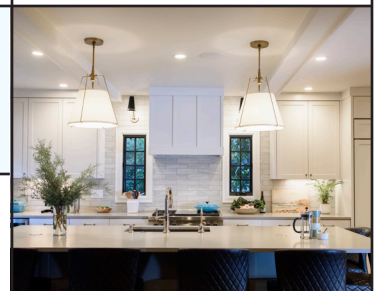
Financial Advisor, CFP®

Parishioner

Direct 503.284.9200

Office 503.7470306

jimj@wfinadv.com



Whole house remodels

- Kitchens • Bathrooms
- Basements • Additions

In-house architecture & design

Nathalie Roloff, Parishioner

503.245.0685

roloffconstruction.com

4300 NE Fremont #130

CCB #140721
WA#ROLOFC1873KU



Bulletin Advertising: contact Rich Hammons • bulletin@themadeleine.edu • 503--281-5777