



CELEBRATE MOTHERS IN MAY!

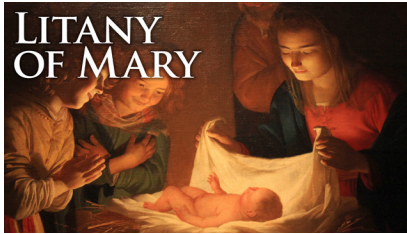
Upload mother & child photos to www.themadeleine.edu/mothers

A May tradition at The Madeleine: celebrating the Month of Mary and Mother's Day in a special way!

Each weekend beginning May 6-7, we will show a slideshow of mothers and children sent in from The Madeleine Community. The photos will show both in the church at all Masses and on our livestream.

We are starting over—all new photos!

This year, again, we're making a fresh start, a blank canvas. So even if you've sent



us a photo before, please send a new one this year.

Submissions can be either a photo of mother and child (children), or a photo of mothers and their mothers. Please send us just one photo of a mother/child combo

per family grouping, as we want to have time to show all our photos.

Send photos by May 2

Upload your photos to our website at www.themadeleine.edu/mothers

CONFIRMATION MASS WITH BISHOP SMITH

We are pleased to welcome Bishop Peter Smith on April 30, as we celebrate the Sacrament of Confirmation at our 10:00 am Mass. At that Mass, we will welcome 40 Confirmandi from The Madeleine plus 10 from Immaculate Heart.

2023 ARCHBISHOP'S CATHOLIC APPEAL

Help grow hope, education, and faith through a donation to the Archbishop's Catholic Appeal. More than 22 life-changing ministries answering the needs of our neighbors, friends, and family are supported through your generosity. To donate, or to view Archbishop Sample's video message, visit JesusChangesEverything.church, or call (503) 233-8336. Be sure to choose "2023 St. Mary Magdalene (The Madeleine)" as your parish so we receive credit for your donation.

PRAY FOR OUR FIRST COMMUNICANTS

Our Second Graders are earnestly studying to receive their First Communion on Sunday, May 21, at the 10:00 am Mass. Please pray for them as they prepare, and please plan to join them on their special day.

CHILDREN'S LITURGY OF THE WORD

After almost a 3-year hiatus, we are bringing back Children's Liturgy of the Word at The Madeleine on the second Sunday of each month. We welcome Pre-K through 5th graders to join our ministry in teaching the Sunday scriptures on an age appropriate level. The first scheduled CLW will be Sunday, May 14, at our 10:00 am Mass, followed by Sunday, June 11. We will pause the ministry for the summer break, but resume in September. We are also in need of more volunteers to join the ministry. If you are interested in learning more, please reach out to cochrane.colette@gmail.com

Third Sunday of Easter

The challenging questions continue. How do we encounter this risen Christ? Where do we find him? Our search is no different from our early Christian brothers and sisters. When they broke bread together in the Eucharist, they realized that he was there. By participating in this holy meal as members of a believing community, we experience that same presence among us. We learn about the power of being with one another in the simplest gestures of life. What could be more universal than breaking bread together—whether at an altar or an ordinary table?

PRAY FOR OUR FAITHFULLY DEPARTED

- ▶ Pamela Wiggan—*Funeral April 29, 11:00 am*
- ▶ Martha Durrett

PRAYER REQUESTS

For those who are ill, or in need of our prayers

- ▶ Pope Francis
- ▶ Jean Lynch
- ▶ Chadd Garvens
- ▶ Mason Lugar

WORSHIP & PRAYER

- 04/25, Tues Mary Cox †
- 04/26, Weds Frederic Harkins †
- 04/27, Thurs Charles Williamson †
- 04/28, Fri Raymond Routtu †
- 04/29, Sat Joe Bencich †
- 04/30, Sun, 8:00 am. . . The Madeleine Community
10:00 am Irene Fulmer †

Inside this week's bulletin:

- ▶ **E-Waste Recycling Event**—It's finally here! Sunday, 9:00 am–1:00 pm. Details on Page 5.
- ▶ **Prayer Walk for Climate Justice**—Saturday, May 20. See Page 7 for details.
- ▶ **Screening of The Letter: A Message for our Earth**—Old Madeleine Church, May 7. Page 6.

Calendar This Week

SUNDAY, APRIL 23

- 8:00 am: Mass—Church
- 8:45 am: RCIA—St. Catherine Room
- 9:00 am: E-Waste Collection—Parish Hall
- 9:00 am: Confirmation Class—Fireside Rm
- 10:00 am: First Eucharist Class—Fireside Rm
- 10:00 am: Mass—Church  **ALSO LIVESTREAMS**
- 11:15 am: Confirmation Rehearsal—Church

MONDAY, APRIL 24

- 6:30 pm: FA Meeting—Fireside Rm

TUESDAY, APRIL 25

- 8:00 am: Mass—Church
- 9:00 am: Adoration—Church
- 10:00 am: Silver Exchange—Rectory Dining

WEDNESDAY, APRIL 26

- 8:00 am: Mass—Church
- 2:45 pm: Children's Choir—Church
- 7:00 pm: Madeleine Choir—Church

THURSDAY, APRIL 27

- 2:00 pm: School Mass—Church

FRIDAY, APRIL 28

- 8:00 am: Mass—Church

SATURDAY, APRIL 29

- ▶ Knights Baby Bottle Drive
- 11:00 am: Pamela Wiggin Funeral Mass—Church
- 5:00 pm: Mass—Church

SUNDAY, APRIL 30

- ▶ Knights-Baby Bottle Drive
- 8:00 am: Mass—Church
- 8:45 am: RCIA—St. Catherine Room
- 10:00 am: First Eucharist Class—Fireside Rm
- 10:00 am: Confirmation Mass—Church  **ALSO LIVESTREAMS**
- 11:30 am: Laudato Si'—St. Catherine Room
- 3:00 pm: Cappella Romana-Ivan Moody Greek Liturgy concert—Church

SAVE THE DATE

- ▶ **The Letter Screening:** May 7
- ▶ **Prayer Walk for Climate Justice:** May 20
- ▶ **First Communion Mass:** May 21
- ▶ **Wine Tasting:** August 26
- ▶ **Parish Picnic/Oktoberfest:** October 8
- ▶ **Madeleine Marketplace:** December 7

PARISH LIFE

DISCERNING CATHOLIC: AN APOSTOLIC VOICE

“Jesus didn’t wear a microphone, did he?” said Father John, struggling to clip the microphone to his vestments. “He must have had a tremendous voice.” Tremendous indeed. Strong enough to reach the most distant ears of the five thousand on the mountainside, confident and eloquent enough to parry the words of Pharisees in the courtyard of the temple. Yet these are singular episodes in a voice that spanned three years of ministry. What about that voice, the one which quietly asked again and again, “will you come and follow me?” This is the voice we’ve inherited and are called to utilize. An apostolic voice.

A quick anecdote: one sunny Saturday at the PSU Farmers Market, I watched shoppers part, skirting right and left to either side of a young man emphatically preaching the Gospel, and coalesce again without otherwise acknowledging the young man’s presence. It was as if they were water and he were a stone squatting midstream. Giving the young man credit for his stamina and persistence, I couldn’t

help but wonder about the half-life of the voice he sparked in the consciousness of the individuals he attempted to reach that day.

There are few things in this world more remarkable than the human voice, given its ability to project cruelty and compassion, to express unutterable sorrow and inexplicable joy, to build both barriers and bridges. So, in this unparalleled age of self-expression, are we utilizing our voices as Jesus intended, as disciples of his apostolic church? From the woman at the well to the blind man in the temple, Jesus had an uncanny ability to reach with his voice and guide people to his Word. How can we learn to use our voices in the same fashion?

The Discerning Catholics Ministry calls you to join your voice with ours on Monday evening, April 24, from 6:30 to 8:00 pm in the St. Catherine Room in the Old Church. If you’d like more information, or would like to join us virtually via Zoom, please contact Dan O’Brien at discerningcatholic@themadeleine.edu or by phone at 503-206-2843.

BOOK CLUB NEWS

We cordially invite you to join our group of enthusiastic readers. We meet monthly to discuss some very excellent books and would love to have you participate. To be added to our email list or for additional details, please contact: MBC Ministry Coordinator Gretchen Stevenson: gypsyfrau47@yahoo.com



“God’s gaze never stops with our past filled of errors, but looks with infinite confidence at what we can become.”

—Pope Francis via Twitter
@pontifex

MOTHER’S DAY BABY BOTTLE DRIVE

This year, the Knights of Columbus are again doing their annual Baby Bottle Drive for Mother and Child. Mother and Child Education Center appreciates the support of The Madeleine community in helping their efforts to assist prospective and new parents with their children. Mother and Child provides no-cost pregnancy tests and connects pregnant moms and dads with resources, diapers, baby clothing, maternity clothes, and support.

Baby bottles will be available after the Masses starting the weekend of April 29 and 30th to collect spare change and donations. Bottles can be returned on Mother’s Day, May 14 after the Masses. Or you can scan the QR code to make a secure contribution with your credit card or debit card.



In this Sunday’s Gospel, as we hear the story of the disciples on the road to Emmaus, we also come to know that our daily reaching out to our neighbor is our daily walk with the risen Christ; we recognize him in others. This month, through your gifts, the Society of St. Vincent de Paul brought the love and care of Jesus to the poor by assisting your neighbors. Thank you.

—Mary Clare O’Brien, 503-309-7639

In Memoriam

THE MADELEINE FAMILY REMEMBERS

PAMELA WIGGIN

Funeral Mass—Saturday, April 29, 11:00 am

A Funeral Mass will be held for long-time parishioner Pamela Wiggin on Saturday, April 29, 11:00 am.

Pamela Jane Wiggin, affectionately known as “Gwenna,” passed away after a long and courageous battle with cancer. She peacefully left this world surrounded by her family on November 13 at the age of 77.

Pam was a remarkable woman who touched the lives of many people with her kindness, generosity, and dedication to her family, friends and community.

Along with her dear friends, she remained committed to volunteering her time even while battling through cancer. She was incredibly resilient and good-hearted and she always attended to the needs of others before herself.

Pam pursued her interests, enjoying the beauty of the outdoors and was an avid birdwatcher who loved traveling the world and exploring new places.

Born in Walla Walla, Washington, she grew up in a military family and lived in many different places as a young girl including Germany, Switzerland, Libya and San Diego where she met her husband, Hank while attending college.

Please pray for Pamela, her family, and all the faithfully departed from The Madeleine

She reveled in the beauty of nature and was happiest in the majestic San Juan Islands, Washington, spending precious time there in the presence of her family and close friends.



She will be dearly missed by all who knew her, and we are comforted to know that she is now at peace and able to appreciate the wonders of the natural world in a new way.

May we find solace in the memories of Pam and in the love and support of those around us who share all the wonderful memories and amazing life experiences.

Pamela is survived by her husband Hank, her three children Perry, Henry and Monica, as well as four grandchildren, three nieces, daughter-in-law, cousin, and sister.

SATURDAY 29 APRIL 2023, 8:00 P.M.
St. Mary's Cathedral, NW PORTLAND



SUNDAY 30 APRIL 2023, 3:00 P.M.
The Madeleine Parish, NE PORTLAND

Composer Ivan Moody (also an Orthodox priest) is one of the world's most important composers of modern Orthodox music, and a regular collaborator with Cappella Romana for over 20 years. **This setting of the Greek Liturgy inscribes Byzantine chants on ethereal clouds of sound.**

Greek Liturgy was commissioned by Dr. Peter Jermihov, who will conduct these NW premiere performances. Moody's work aligns his deep compositional gifts with the chant traditions that have come before.

Conducted by Peter Jermihov, with the priest's intonations sung by Eleftherios Chasanidis, new protopsaltis of the Greek Orthodox Cathedral of the Holy Trinity in New York.

cappellaromana.org

Parishioners of the Madeleine save 30% in Sections A & B in advance by using the discount code "MADELEINE"

WEEKLY MASS TIMES

Regular Mass Times:

Tuesday, Wednesday, Friday 8:00 am
Thursday No School: 8:00 am
During School: 2:00 pm
Saturday Vigil 5:00 pm
Sunday 8:00 am, 10:00 am

► Livestream 10:00 am Sunday
at youtube.com/themadeleineparish

Penance By appointment; call Parish Office

PARISH OFFICE

Hours Monday–Friday, 10:00 am–3:00 pm

Phone: 503-281-5777 **Fax:** 503-281-0673

School Office. 503-288-9197

PARISH STAFF

Rev. Mike Biewend—Pastor
fathermike@themadeleine.edu ext. 111

Deacon Mike O'Mahoney—Permanent Deacon
deaconmike@themadeleine.edu

Carol Glasgow—School Principal
cglasgow@themadeleine.edu 503-288-9197

John Garrow—Business Manager
jgarrow@themadeleine.edu ext. 118

My Schoning—Assistant Business Manager
mhoang@themadeleine.edu ext. 118

Darlene Maurer—Pastoral Assistant
dmaurer@themadeleine.edu ext. 125

Therese Fenzl—Director of Spiritual Ministries
tfenzl@themadeleine.edu ext. 116

Maria Manzo—Director of Music
mmanzo@themadeleine.edu ext. 113

Guy Allen—Events Manager
gallen@themadeleine.edu

Gretchen Stevenson—Office
gstevenson@themadeleine.edu ext. 112

Julie Kupers—Special Events
jkupers@themadeleine.edu 720-936-5635

Janeen Reilly—Parish Administrator
jreilly@themadeleine.edu ext. 110

Terry Silva—Facilities Support
tsilva@themadeleine.edu ext. 117

Rich Hammons—Director of Communications
rhammons@themadeleine.edu ext. 129

SACRAMENTS

Marriages, Funerals, Anointing of the Sick—Fr. Mike ext. 111

Infant Baptism—Darlene Maurer ext. 125

First Reconciliation, First Eucharist—Rose Horton sac-prep@themadeleine.edu

RCIA—Christi Bohmbach, rcia@themadeleine.edu

Confirmation—Fr. Mike ext. 111

COUNCILS & CONTACTS

Pastoral Council—Meg Scharle

Finance Council—Jim Jones 503-284-3301

Buildings & Grounds—Erin Couch 503-281-9575

School Advisory—Tim Resch 503-984-46072

Facility Requests—themadeleine.edu/facilities

Maintenance Requests—John Garrow
jgarrow@themadeleine.edu ext. 118

St Vincent de Paul (Food, utility, rent assistance)
Mary Clare O'Brien 503-309-7639

Ministry Schedule
www.themadeleine.edu/minister-schedule

Bulletin submissions due 5:00 pm Tuesday.
Email to bulletin@themadeleine.edu

RECYCLING PROGRAMS AT THE MADELEINE

Marked collection bins in the breezeway facing 23rd Ave.

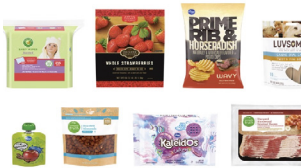
The Madeleine's Laudato Si' Circle and Care for Creation Ministry have joined with U. S. based recycler, Terracycle, to offer our parish, school, and community opportunities to responsibly recycle specific items (primarily plastics) not generally handled at curbside. Terracycle has added more manufacturers to its program, and in turn, we have expanded our recycling offerings. Here is a current listing of what we are collecting. Please keep this in mind:

- ▶ Do not include garbage or items not specifically mentioned in the descriptions.
- ▶ Empty containers of contents. No need to wash first; ensure packaging is dry.



KROGER FLEXIBLE PLASTICS

All Kroger brand flexible plastic packaging can now be accepted. Includes Private Selection and Simple Truth brands as well.



HAIR CARE APPLIANCES AND TOOLS

All types and brands of hair care tools and appliances, including hair dryers, straightening irons, curling irons, thermal brushes and mini tools.



SWIFFER REFILLS



Swiffer only brands of Sweeper™ Dry, Wet, and XL Refills, WetJet Refills™, and Duster™ Refills.

LATE JULY® SNACKS

All Late July® snack packaging as seen in these examples. Limited to Late July brand only.



ORAL CARE PRODUCTS

All brands of used or empty oral care products, including toothpaste tubes, tooth brushes, and dental floss containers.



FOOD STORAGE

All brands of well-used plastic and glass food storage containers.



GILLETTE® AND VENUS RAZORS AND RAZOR BLADES

All brands of blades and razors (systems and disposable units, and replaceable-blade cartridge units), rigid plastic packaging, and flexible plastic bag packaging.



CIGARETTE BUTTS, SANTA FE NATURAL TOBACCO COMPANY

All brands of fully extinguished cigarettes (and ashes) and tobacco products, including filters, plastic packaging, inner foil packaging, rolling paper, and loose tobacco pouches.



BIC WRITING INSTRUMENTS AND PACKAGING

All brands of empty writing instruments, glue sticks, water-color dispensers, highlighters, paint sets, and flexible packaging.



OFFSITE RECYCLING OPPORTUNITIES FOR FAMILIES

REDYPER DISPOSABLE DIAPERS

Subscription service for purchasing and recycling Redyper brand disposable diapers through Terracycle

LOOP

Offers zero-waste packaging of everyday essentials (beauty, health and personal care, grocery, and household essentials) from leading brands (including Haagen-Dazs!) Details at www.loopstore.com

Details on all programs at www.themadeleine.edu/terracycle

45th Parallel Universe presents

HORNS APLENTY

Arcturus Quintet

May 4 | 7:00 pm

The Madeleine

Delectable works for wind quintet (and English horn!) that will charm you, featuring music from the very early days of the wind quintet's formation as a genre.

Damase: Variations

Villa-Lobos: Quintet

Reinecke: Sextet



45thparallelpdx.org

45TH PARALLEL
UNIVERSE



Upcoming Concerts

Performances in The Old Madeleine Church unless noted

- ▶ **April 30, 3:00 pm** • Capella Romana • Ivan Moody: Greek Liturgy • Main Church • cappellaromana.org
- ▶ **May 4, 7:00 pm** • 45th Parallel Universe • Horns Aplenty • 45thparallelpdx.org
- ▶ **May 13, 7:00 pm** • Madeleine Choir Festival Concert • Main Church
- ▶ **May 21, 3:00 pm** • Bravo! Northwest • Then Sing We All. Jazz Cantina • bravoconcerts.com
- ▶ **May 25, 7:00 pm** • 45th Parallel Universe • Franz and PDQ • 45thparallelpdx.org

The Madeleine Care for Creation

ANNUAL E-WASTE RECYCLING EVENT

Sunday, April 23 • 9:00 am–1:00 pm • www.themadeleine.edu/ewaste

THIS WEEKEND! PLEASE JOIN US!

In partnership with St. Charles, St. Andrew, and Holy Redeemer Parishes, The Madeleine Care for Creation Committee will be holding its annual Earth Day E-Waste Recycling Event in the Parish Hall driveway to collect electronic waste for recycling.

Green Century Recycling will be on hand to collect, sort and recycle the electronic waste items. In addition, Ridwell will be on site to collect #1 PET clear plastic clamshells. Plus, we will collect worn-out athletic shoes to be ground up and re-purposed.

Visit www.themadeleine.edu/ewaste for a complete list of items accepted.

GREEN CENTURY RECYCLING
PULL THE PLUG ON ELECTRONIC WASTE.

Ridwell



Join us to experience *The Letter: A Message for Our Earth*, an award-winning documentary that focuses on a letter written by Pope Francis to everyone on the planet, and an encounter with a small group of people that gave them hope.

It will do the same for you

Regardless of your faith tradition, *The Letter* teaches us how spiritual values call us to take action on the planetary crisis.



Sunday, May 7 • 3:00 pm

**The Old Madeleine Church
3123 NE 24th Ave • Portland**

After the screening will be a facilitated discussion of the film.



Additional information, links and details at
www.themadeleine.edu/letter

IN PARTNERSHIP WITH
St. Charles
St. Andrew
Holy Redeemer
PARISHES

PRAYER WALK FOR CLIMATE JUSTICE

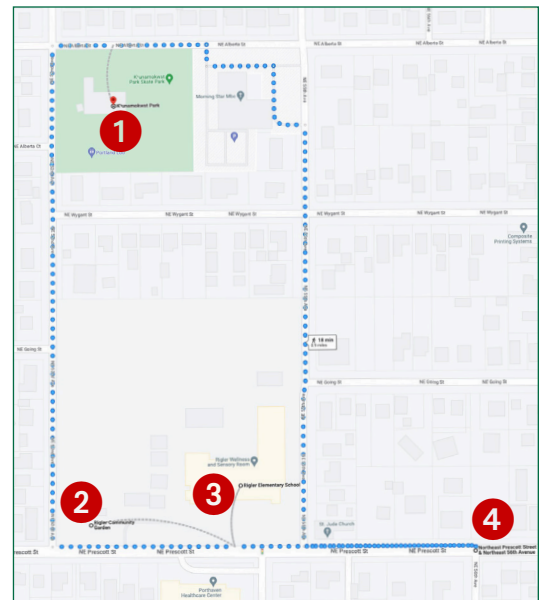
Saturday, May 20 • 10:00 am

Join the Care for Creation committees at The Madeleine, St. Charles, Holy Redeemer and St. Andrew parishes for our first Prayer Walk for Climate Justice.

With this walk, we work to raise awareness of issues impacted by climate change and featured in the documentary *The Letter: A Message for Our Earth* (free screenings available, see below). The walk is composed of four stations with specific emphasis on affected groups. Each station will include an opening prayer, brief description of how the group is impacted, a parable, and a concluding prayer. We will gather afterward at the park to continue the discussions. Feel free to bring a picnic lunch; cookies and drinks provided. Bring the entire family to this rain-or-shine event.

STATIONS

- 1 Indigenous People** • Khunamokwst Park, 5200 NE Alberta St.
- 2 Nature/Wildlife** • 52nd & Prescott (a community garden and a grove of native trees)
- 3 Youth** • Rigler School, 54th & Prescott (location of a DEQ clean air monitoring device)
- 4 Climate Refugees** • 56th & Prescott (site of a new low-income housing unit and home to a percentage of Native Americans)



Walking is involved; total distance approx. 1 mile. Some streets may be lacking sidewalks.

SCREENING OF *THE LETTER*

- **Sunday, May 7** • 3:00 pm • The Old Madeleine Church • 3123 NE 24th Ave. • Portland



Additional information, links and details at
www.themadeleine.edu/climate-walk

IN PARTNERSHIP WITH
St. Charles
St. Andrew
Holy Redeemer
PARISHES



Timmco
INSURANCE

Brian Timm
Susan Ames | Derek Ames

1615 NE Broadway | 503-288-8818
www.timmco.com

AUTO | HOME | BUSINESS | LIFE

TIM WALTERS

Principal Broker



The most trusted name in Real Estate!

Committed to the NE Portland

Neighborhoods since 1991



503-545-1880 | TimWaltersRealtor@Gmail.com | TimWaltersPc.com



DDI benefits

Questions about Medicare?
We can help!

Emmett Dooney, '11
Licensed Medicare Agent
503.206.4080
medicare@ddibenefits.com



T.C. O'LEARY'S
a little irish
PUB

2926 NE Alberta Street
A little taste of Ireland!
www.tcolearys.com



Parishioners Tom, Siobhan
& Aine O'Leary

JOHN M. WYNN

ATTORNEY AT LAW

McGill, Kapranos & Wynn
Parishioner

Hollywood Professional Center, 3939 NE Hancock St., Ste. 305
jmwpxd@qwestoffice.net • 503-287-7333



LANCE MARRS

PRINCIPAL BROKER

503.701.5323

PORTLAND MODERN REAL ESTATE

LICENSED IN OREGON

PORTLANDMODERN.COM



PAUL MARRS

MORTGAGE LOAN OFFICER NMLS ID #5212

O:503.781.2114 B:503.994.8559

PMARRS@CANOPYMORTGAGE.COM

CANOPYMORTGAGE.COM/PAULMARRS

CANOPY MORTGAGE

Beaverton Branch Canopy Mortgage, LLC 12655 SW Center Street Beaverton OR 97005 NMLS ID #1359687



JOSÉ MESA AUTO WHOLESALE, LLC

"The mobile auto dealer who is always in your neighborhood."

YOUR DISCOUNT AUTO RETAILER SINCE 1992!

sales@josemesa.com 503-789-0438 www.josemesa.com

NEW • USED • BUY • SELL • LEASE • TRADE • CONSIGN • BROKER • APPRAISE



Dr. Phil Doleac, PC

Orthodontics for all ages
www.magic-smiles.com

Beaverton Portland Scappoose
503.644.7009 503.255.1694 503.543.4488

BUY OR SELL

**OUR TEAM
CAN HELP!**



Opt.
REAL ESTATE

JEFF KERSTEN
REALTOR®
503.720.9179
jeff@theopt.com



Retrouvaille
A Christian Peer Ministry
A LIFELINE FOR
HURTING MARRIAGES

Is your marriage tearing
you and your family apart?

Weekends held 3 times per year in Oregon

www.helpourmarriage.com
503-704-7382

Donated by Kevin & Carol McMenamin

DOSIER CONSTRUCTION

Kitchen & Bathroom Remodels

503-985-9982

Austin Dosier, Parishioner

austin@dosierconstruction.com OR CCB 215259

ANNE C. STEINER

ESTATE PLANNING
ELDER LAW ATTORNEY

503.946.8361 • 1915 NE Cesar Chavez Blvd.
PARISHIONER - anne.c.steiner@gmail.com

WILLS - TRUSTS - PROBATE
GUARDIANSHIP - CONSERVATORSHIP



Dr. John R. Lewis

Beaumont Vision

*Beaumont Vision:
providing full-
service eyecare
for all ages,
including com-
prehensive
exams, glasses
and contacts*

Stop by to view our unique
eyewear

Most insurances accepted

4331 NE Fremont St

Ph: 503-331-3937

**JOHN W. LOBO
PAINTING**

Custom Interior & Exterior
Creative Finishes
503-969-3337 CCB#89027
Licensed Bonded Insured



Sweetly Aimee, LLC
Custom Wedding and All-
Occasion Cakes and Desserts

Aimee Holzschuh
Parishioner & Parent
503.998.7368

www.SweetlyAimee.com



PAUL MYERS, Ph.D., LLC
PSYCHOTHERAPY, COUNSELING
& CONSULTING SERVICES

(503) 381-6685 paulmyersphdpdx@gmail.com
www.paulmyersphdpdx.com

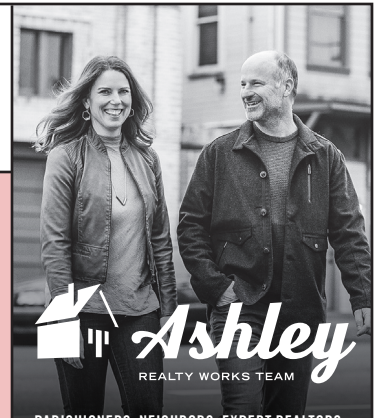


**THEORY
MORTGAGE**

Beating Banks Daily

Brian DuVal
503-850-7667

NMLS 5912, NMLS 1848246



PARISHIONERS, NEIGHBORS, EXPERT REALTORS

Wick & Karoline Ashley
karoline@ashleyrealtyworks.com
(503) 819-4851
237 NE Broadway Suite 100

RE/MAX
equity group

Mark McGinnis

Parishioner, Parent
Mortgage Advisor

NMLS 98586

503-348-4917

"It's about service!"



mark.mcginis@neohomeloans.com



**WILLAMETTE
FINANCIAL ADVISORS, LLC**
PERSONALIZED ADVICE FROM TRUSTED ADVISORS

James M Jones

Financial Advisor, CFP®

Parishioner

Direct 503.284.9200

Office 503.7470306

jimj@wfinadv.com



Whole house remodels
• Kitchens • Bathrooms
• Basements • Additions
In-house architecture & design

Nathalie Roloff, Parishioner

503.245.0685
rolloffconstruction.com
4300 NE Fremont #130



CCB #140721
WA#ROLOFC1873KU

Bulletin Advertising: contact Rich Hammons • bulletin@themadeleine.edu • 503--281-5777