

## Renewed and Redeemed

### Lent, Triduum & Easter at The Madeleine

#### Lenten Faith Groups

[www.themadeleine.edu/faith-sharing](http://www.themadeleine.edu/faith-sharing)

▶ 6-week Lenten study during this penitential season.

#### Stations of the Cross

Fridays, March 24, 31 † 11:30 am

• Main Church

#### Adoration

Tuesdays, March 21, 28, April 4

† 9:00 am

#### Daily Mass Times

† 8:00 am—Tues., Weds., Fri.

† 2:00 pm—Thursday School Mass

#### Passion (Palm) Sunday

† Saturday, April 1, 5:00 pm & Sunday, 8:00 am—Gather in front of Main Church.

† Sunday, April 2, 10:00 am—Join procession at 9:45 am in the Parish Hall turnaround.

#### Chrism Mass

Mon., April 3 † 7:00 pm • St. Mary's Cathedral

#### Tenebrae

Friday, April 7 † Noon • Main Church

▶ A beautiful liturgy that meditates on Christ's suffering.



† Holy Thursday, April 6, 6:30 pm:

Evening Mass of the Lord's Supper

† Good Friday, April 7, 6:30 pm:

Celebration of the Lord's Passion

† Easter Vigil, April 8–8:30 pm:

Vigil in the Holy Night of Easter (Old Church); Reception follows.

† Easter Sunday, April 9, 8:00 am & 10:00 am:

Mass of The Resurrection of the Lord; Following 10:00 Mass will be an Easter Egg hunt for children, plus pastries and Champagne for the adults!

## Fourth Sunday of Lent

As we continue our journey through this season of Lent, we are met with the question of who is worthy in God's eyes. Based on false expectations the Israelites and the Pharisees never thought David would be chosen king or that Jesus would heal the man born blind. Worthiness may be found not in reputation or pedigree or appearance, but in one's heart.

### PRAY FOR OUR FAITHFULLY DEPARTED

- ▶ Pam Wiggin—Funeral April 29, 10:00 am
- ▶ Bishop David O'Connell
- ▶ Christie Kmetz

### PRAYER REQUESTS

For those who are ill, or in need of our prayers

- ▶ Steve Graham
- ▶ Chadd Garvens
- ▶ Mason Lugar

## SLEEP IN HEAVENLY PEACE BUILD DAY

Help build beds for kids who need them • April 1, 10:00 am

SHP-OR, Portland Metro invites you to join us for Bunk Bed Build Day on Saturday, April 1. We are getting close to delivering our 400th bed to kids in need in our town, and new bed requests are at an all time high. We

need your help to keep up with demand. So save the date and join us for a memorable day of joy and community service!



All ages are welcome! No experience necessary. All tools and lunch will be provided.

#### Time & location:

- ▶ 10:00 am - 2:00 pm
- ▶ Portland Shed, 10609 NE Simpson St.

Portland, OR 97220

For more info, contact:

- ▶ Gregg Miller: 503-789-3932
- ▶ Mark Miller: 503-347-3789

### WORSHIP & PRAYER

- 03/21, Tues. .... Stella Resch
- 03/22, Weds ..... Hayden Shoemaker
- 03/23, Thurs ..... Claire Noone
- 03/24, Fri ..... Roxanne Thompson
- 03/25, Sat ..... Pam Wiggin †
- 03/26, Sun, 8:00 am. . . The Madeleine Community  
10:00 am ..... John Guthrie

# Calendar This Week

## SUNDAY, MARCH 19

- ▶ Catholic Relief Services Collection
- 8:00 am: Mass—Church
- 8:45 am: RCIA—St. Catherine Room
- 10:00 am: First Eucharist Class—Fireside Rm
- 10:00 am: Family Mass—Church
-  **ALSO LIVESTREAMS**
- 11:15 am: Confirmation Retreat—Old Church
- 11:30 am: Madeleine Singers—Church

## MONDAY, MARCH 20

- 12:00 pm: Faith Sharing Group—Fireside Rm
- 6:30 pm: FA Meeting—Fireside Rm

## TUESDAY, MARCH 21

- 8:00 am: Mass—Church
- 9:00 am: Adoration—Church

## WEDNESDAY, MARCH 22

- 8:00 am: Mass—Church
- 2:30 pm: Girl Scout Cookie Sale
- 2:45 pm: Children's Choir—Church
- 3:30 pm: Girl Scout Cookie Sale—Parish Hall Driveway
- 5:30 pm: Chimes Rehearsal—Church
- 7:00 pm: Madeleine Choir—Church
- 7:00 pm: Faith Sharing Group—Rectory Dining

## THURSDAY, MARCH 23

- 2:00 pm: School Mass—Church
- 7:00 pm: 45th Parallel Concert—Old Church


## FRIDAY, MARCH 24

- 8:00 am: Mass—Church
- 11:30 am: Stations of the Cross—Church

## SATURDAY, MARCH 25

- 5:00 pm: Mass—Church
- 5:30 pm: RCIA—Rectory Dining

## SUNDAY, MARCH 26

- 8:00 am: Mass—Church
- 8:50 am: Confirmation—Fireside Rm
- 10:00 am: Mass—Church  **ALSO LIVESTREAMS**
- 3:00 pm: Bravo Concert—Old Madeleine Church

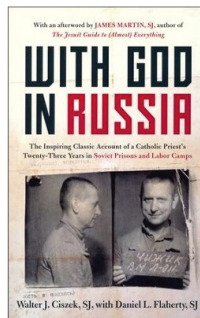
### SAVE THE DATE

- ▶ **Fish Fry Friday:** April 21
- ▶ **E-Waste Recycling:** April 23
- ▶ **Wine Tasting:** August 26
- ▶ **Parish Picnic/Oktoberfest:** October 8
- ▶ **Madeleine Marketplace:** December 7

## PARISH LIFE

### BOOK CLUB EVENING WITH FR. MIKE

Our group is currently reading *With God in Russia*, by Walter Cizek, SJ. Fr. Mike will be leading our discussion the 28th of this month, and you are invited to join us as we review this great book. You do not need to be a member to attend this session, but please contact our MBC ministry coordinator to sign up and get further details: Gretchen Stevenson, gypsyfrau47@yahoo.com or 503-312-6834.



### BOB HURD CONCERT AND WORKSHOP

Bob Hurd, composer, teacher and liturgist, performs a concert of his well-known songs from his nearly 50 years of composing liturgical music. Friday, April 21, 7 pm at Holy Family Catholic Church, 7525 SE Cesar Chavez Blvd., Portland.

Bob will also conduct a workshop titled "Singing the Gospel of Creation: Our Common Home in Life, Liturgy and Music." Based on Pope Francis' encyclical "Laudato Si', Our Common Home," Bob invites worshippers to explore and celebrate our care of creation in the redeemed Christ. Saturday, April 22, 9 am – Noon, Celebration Hall (across SE Flavel St. from church). Please register by sending an email to joy@holymfamilyportland.com by April 19.

### JESUIT VOLUNTEER CORPS NORTHWEST

Jesuit Volunteer Corps Northwest is recruiting! JVs are invited to engage in one or more years of full-time service with local organizations throughout the Pacific Northwest.



Jesuit Volunteers live together in community, serving in both urban and rural locales across Alaska, Idaho, Montana, Oregon, and Washington, while serving alongside and accompanying communities to co-create a more just and equitable world.

As a Jesuit Volunteer, members will earn a living stipend, health insurance, and a nearly \$7,000 Education Award. Communal housing with other volunteers is also provided.

- Eligible volunteers will be:
- ▶ 21 years or older by August 1
  - ▶ Willing to share communal housing with fellow volunteers
  - ▶ Unmarried with no dependents
  - ▶ Hold a high school degree or equivalent.

We are now accepting applications for the 2023-24 service year that begins in August. The next priority deadline to apply is on March 7, 2023, though applying earlier will ensure you a better chance of a preferred placement. Head to our website [jvcnorthwest.org](http://jvcnorthwest.org) to find out more and to start your application!

## TIPS FOR GREEN LIVING

### Find a Family Farmer

Do you have a family farmer yet? The issue is about buying most of your vegetables directly from a local farmer. Imagine having baskets full of organic vegetables (delicious, fresh and pesticide-free) that could be conveniently dropped off close to your home. Thanks to Community Supported Agriculture (CSA), there is most likely an outlet in your area (even your church could become one!) which would provide you with fresh fruits and vegetables, even meat, on a weekly basis. Registration usually takes place in February and March, so look for "Community Supported Agriculture" in your area.

### Save a Forest: Use a Towel or Rag

In North America, we cut down millions of trees each year in order to produce paper towels. To reduce our paper product consumption, save an old piece of clothing and use it as a rag to wipe up messes. By reusing materials, we decrease the pressure on our forests. This helps save forest ecosystems, which are an important part of the biodiversity of our planet.



**In today's Gospel,** Jesus gives sight to the blind man. Through grace we are also transformed from not seeing to seeing and then Jesus sends us to help others see and believe. Your gift to the Society of St. Vincent De Paul brings joy, peace, forgiveness, mercy and kindness to the hurting hearts of the poor.

—Mary Clare O'Brien, 503-309-7639



# Fast, pray and journey as one community with our Candidates

## RCIA 2023



Kristen Kill



Teresa Altaras



John Guthrie



Claire Noone

### LENTEN RICE BOWLS

Each Lent, Catholic families across the country unite to put their faith into action through prayer, fasting and almsgiving. Through CRS Rice Bowl, families learn about how our sisters and brothers across the globe overcome hardships like hunger and malnutrition, and



how through Lenten alms, we have the power to make the world a better place for all.

Rice Bowls are available in the church beginning Ash Wednesday. Please be generous during Lent, then return them to the church on Holy Thursday.

### LENTEN FASTING & ABSTINENCE

**From the Archdiocese:** *Ash Wednesday and Good Friday are obligatory days of fasting and abstinence for Catholics. In addition,*



**ARCHDIOCESE OF PORTLAND IN OREGON**

*Fridays during Lent are obligatory days of abstinence. For members of the Latin Catholic Church, the norms on fasting are obligatory from age 18 until age 59. When fasting, a person is permitted to eat one full meal, as well as two smaller meals that together are not equal to a full meal. The norms concerning abstinence from meat are binding upon members of the Latin Catholic Church from age 14 onwards.*

*Members of the Eastern Catholic Churches are to observe the particular law of their own sui iuris Church. If possible, the fast on Good Friday is continued until the Easter Vigil (on Holy Saturday night) as the "paschal fast" to honor the suffering and death of the Lord Jesus and to prepare ourselves to share more fully and to celebrate more readily his Resurrection. Archbishop Sample has granted a dispensation from the obligation of abstinence on Friday 17th March, 2023, the optional memorial of St. Patrick.*

### WEEKLY MASS TIMES

**Regular Mass Times:**

Tuesday, Wednesday, Friday . . . . . 8:00 am  
 Thursday . . . . . No School: 8:00 am  
 During School: 2:00 pm  
 Saturday Vigil . . . . . 5:00 pm  
 Sunday . . . . . 8:00 am, 10:00 am

► Livestream 10:00 am Sunday  
 at [youtube.com/themadeleineparish](https://youtube.com/themadeleineparish)

**Penance** . . . By appointment; call Parish Office

### PARISH OFFICE

**Hours** . . . . . Monday–Friday, 10:00 am–3:00 pm  
**Phone:** 503-281-5777 . . . . . **Fax:** 503-281-0673  
**School Office.** . . . . . 503-288-9197

### PARISH STAFF

- Rev. Mike Biewend**—Pastor  
[fathermike@themadeleine.edu](mailto:fathermike@themadeleine.edu) . . . . . ext. 111
- Deacon Mike O'Mahoney**—Permanent Deacon  
[deaconmike@themadeleine.edu](mailto:deaconmike@themadeleine.edu)
- Carol Glasgow**—School Principal  
[cglasgow@themadeleine.edu](mailto:cglasgow@themadeleine.edu) . . . 503-288-9197
- John Garrow**—Business Manager  
[jgarrow@themadeleine.edu](mailto:jgarrow@themadeleine.edu) . . . . . ext. 118
- My Schoning**—Assistant Business Manager  
[mhoang@themadeleine.edu](mailto:mhoang@themadeleine.edu) . . . . . ext. 118
- Darlene Maurer**—Pastoral Assistant  
[dmaurer@themadeleine.edu](mailto:dmaurer@themadeleine.edu) . . . . . ext. 125
- Therese Fenzl**—Director of Spiritual Ministries  
[tfenzl@themadeleine.edu](mailto:tfenzl@themadeleine.edu) . . . . . ext. 116
- Maria Manzo**—Director of Music  
[mmanzo@themadeleine.edu](mailto:mmanzo@themadeleine.edu) . . . . . ext. 113
- Guy Allen**—Events Manager  
[gallen@themadeleine.edu](mailto:gallen@themadeleine.edu)
- Gretchen Stevenson**—Office  
[gstevenson@themadeleine.edu](mailto:gstevenson@themadeleine.edu) . . . . . ext. 112
- Julie Kupers**—Special Events  
[jkupers@themadeleine.edu](mailto:jkupers@themadeleine.edu) . . . 720-936-5635
- Janeen Reilly**—Parish Administrator  
[jreilly@themadeleine.edu](mailto:jreilly@themadeleine.edu) . . . . . ext. 110
- Terry Silva**—Facilities Support  
[tsilva@themadeleine.edu](mailto:tsilva@themadeleine.edu) . . . . . ext. 117
- Rich Hammons**—Director of Communications  
[rhammons@themadeleine.edu](mailto:rhammons@themadeleine.edu) . . . . . ext. 129

### SACRAMENTS

- Marriages, Funerals, Anointing of the Sick**—  
 Fr. Mike . . . . . ext. 111
- Infant Baptism**—Darlene Maurer . . . . . ext. 125
- First Reconciliation, First Eucharist**—  
 Rose Horton . . . . . [sac-prep@themadeleine.edu](mailto:sac-prep@themadeleine.edu)
- RCIA**—Christi Bohmbach, [rcia@themadeleine.edu](mailto:rcia@themadeleine.edu)
- Confirmation**—Fr. Mike . . . . . ext. 111

### COUNCILS & CONTACTS

- Pastoral Council**—Meg Scharle
- Finance Council**—Jim Jones . . . . 503-284-3301
- Buildings & Grounds**—Erin Couch . . 503-281-9575
- School Advisory**—Tim Resch . . . . . 503-984-46072
- Facility Requests**—[themadeleine.edu/facilities](https://themadeleine.edu/facilities)
- Maintenance Requests**—John Garrow  
[jgarrow@themadeleine.edu](mailto:jgarrow@themadeleine.edu) . . . . . ext. 118
- St Vincent de Paul** (Food, utility, rent assistance)  
 Mary Clare O'Brien . . . . . 503-309-7639
- Ministry Schedule**  
[www.themadeleine.edu/minister-schedule](https://www.themadeleine.edu/minister-schedule)

**Bulletin submissions due 5:00 pm Tuesday.**  
 Email to [bulletin@themadeleine.edu](mailto:bulletin@themadeleine.edu)

# The Madeleine Care for Creation

# ANNUAL E-WASTE RECYCLING EVENT

## Sunday, April 23 • 9:00 am–1:00 pm

In conjunction with St. Charles, St. Andrew, and Holy Redeemer Parishes, The Madeleine Care for Creation Committee is pleased to announce our annual Earth Day E-Waste Recycling Event. The event is provided at no charge, but donations accepted to help cover costs.

### Green Century Recycling will be on hand to accept the following

- ▶ Computers
- ▶ Laptops
- ▶ TV & Monitors (all types)
- ▶ Hard drives (Secure Data Destruction Provided)
- ▶ Misc. Computer Components (floppy drives, Printed Circuit Boards (PCB), etc.)
- ▶ Cords/Wires/Chargers/Power strips
- ▶ Servers/Switches
- ▶ Routers/Hubs/Modems
- ▶ Networking Devices
- ▶ Communications Equipment
- ▶ POS (Point of Sale equip)
- ▶ Printers/Scanners
- ▶ Fax/Copiers
- ▶ Keyboards/Mice
- ▶ Misc. Office Machines
- ▶ Misc. Electronics
- ▶ VCRs, DVD Players
- ▶ Cable & Satellite Equipment
- ▶ Testing Equipment
- ▶ Stereo/Audio Components
- ▶ Cell Phones (with or without batteries)
- ▶ PDAs, Handheld Games
- ▶ Cameras
- ▶ Telephones
- ▶ Gaming Consoles/Systems
- ▶ UPS (uninterruptible power supply) and other Lead Acid Batteries
- ▶ Small/Large Appliances (which include, microwaves, toasters, blenders, etc.)
- ▶ Electric Power Tools
- ▶ Laptop Batteries, Cell Phone Batteries, Li-on batteries
- ▶ Ferrous & Non-Ferrous Metals
- ▶ Air Conditioners

**GREEN CENTURY RECYCLING**  
PULL THE PLUG ON ELECTRONIC WASTE.

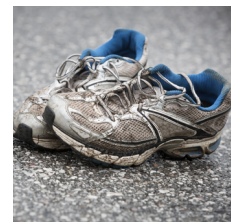


**Ridwell will accept clear #1 PET Plastic Clamshells at the event**

*Ridwell*

**We will collect worn-out athletic shoes to be ground up and re-purposed**

(no dress or casual shoes, please)



### The following items will NOT be accepted during this event.



- ▶ **NO!** Styrofoam
- ▶ **NO!** Fluorescent Tubes and lamps (All types)
- ▶ **NO!** Ink/Toner Cartridges
- ▶ **NO!** Household size batteries (AA, AAA, C, D, 9V, etc.)
- ▶ **NO!** Ni-CD & Ni-MH batteries
- ▶ **NO!** Media (CD, DVD, floppy, VHS, Cassette, tapes)
- ▶ **NO!** PCB Ballasts
- ▶ **NO!** Wood
- ▶ **NO!** Electronic & Magnetic Ballasts (Non-PCB only. Must be post 1978)
- ▶ **NO!** Refrigerators, Freezers, most water coolers, some dehumidifiers
- ▶ **NO!** Capacitors
- ▶ **NO!** Fire Extinguishers
- ▶ **NO!** Mercury Containing Devices (Thermostats, Ionization Smoke Detectors)



SAVE THE DATE • APRIL 21 • PARISH HALL



Fantastic Fish, Family Fun  
[WWW.THEMADELEINE.EDU/FISHFRY](http://WWW.THEMADELEINE.EDU/FISHFRY)

45th Parallel Universe presents

# ILLUMINATIONS

45th Parallel Musicians

March 23 | 7:00 pm

The Old Madeleine Church

Four fantastic works  
inspired by visual artists.

[45thparalleldpx.org](http://45thparalleldpx.org)



45<sup>TH</sup> PARALLEL UNIVERSE

## A Concert of Joy!

Sunday | March 26 @ 3 PM

At the Old Madeleine Church

Adult \$30 | Students Free

[www.bravoconcerts.com](http://www.bravoconcerts.com)

*Elysium Quartet*

Maria Manzo - Piano | Tatiana Kolchanova - Violin  
Collin Oldham - Cello | Michael Kissinger - Clarinet



Music for spring, love, & life

Songs from Porgy & Bess - by Gershwin

The Four Seasons - by Antonio Vivaldi

Air & Simple Gifts by John Williams

Spring Tango by Astor Piazzolla

Flight of the Bumblebee

Presented by

Bravo! Concerts Northwest



## Upcoming Concerts

Performances in The Old Madeleine Church unless noted

- ▶ **March 23, 7:00 pm** • 45<sup>th</sup> Parallel Universe • Illuminations • [45thparalleldpx.org](http://45thparalleldpx.org)
- ▶ **March 26, 3:00 pm** • Bravo! Northwest • Concert of Joy, the Elysium Quartet • [www.bravoconcerts.com](http://www.bravoconcerts.com)
- ▶ **April 13, 7:00 pm** • 45<sup>th</sup> Parallel Universe • American Haiku, Pyxis Quartet • [45thparalleldpx.org](http://45thparalleldpx.org)

## COMMUNITY

### 40 DAYS FOR LIFE

By the grace of God, 40 Days for Life has achieved a stunning track record of life-saving results since launching in 2007 and rapidly has become a worldwide movement. Please continue to pray and advocate for the preborn. More information at [www.bit.ly/40days-2023](http://www.bit.ly/40days-2023)

### WORLDWIDE MARRIAGE ENCOUNTER

“Everyone who drinks this water will be thirsty again; but whoever drinks the water I shall give will never thirst.” Let Jesus fill your thirst for a blessed marriage. Participate in the next Worldwide Marriage Encounter Experience on April 21-23 (Virtual), or June 9-11 in Salem, Oregon. To apply for YOUR WWME Experience or search other dates go to [rediscoverthespark.org](http://rediscoverthespark.org). For information about WWME call 503-704-0836 or by email at [reservations@rediscoverthespark.org](mailto:reservations@rediscoverthespark.org)

“Just as we recognize a tree by its fruit, so a life filled with good deeds is enlightening and carries the fragrance of Christ into the world.”

—Pope Francis via Twitter

@pontifex

# REVEAL Brist's LOVE



The Catholic Relief Services Collection is your opportunity to improve the lives of the most vulnerable people around the world and here in the United States. Your support funds organizations that aid travelers, people affected by war and natural disasters, others whose work or unique cultural circumstances require special pastoral support, and migrants and refugees displaced by conflict, persecution, or political instability.

One example is the people of South Sudan, which became an independent country in 2011 when its people overwhelmingly elected to separate from Sudan, making it the world's newest widely recognized sovereign state.

Clashes between rival ethnic groups then resulted in a civil war that lasted from 2013 through 2020, with millions fleeing to neighboring countries. Nearly one million South Sudanese refugees now shelter in neighboring Uganda, with many located in the Bidi Bidi refugee camp in northern Uganda. For Jimmy Luate, his wife, Jackie, and their daughter, Stella, Bidi Bidi has been home since they fled the war in 2016. Catholic Relief Services—through a comprehensive program of home building, training in hygiene practices, and leadership development—

has helped Jimmy become a leading advocate for refugee families in need.

When you contribute to The Catholic Relief Services Collection, you not only



strengthen programs that meet the immediate material needs of refugee families like Jimmy's, but you also empower and train future leaders who work to build peace and stability in their homelands.

## Your Donations Help Our Brothers and Sisters . . . In the United States

Feed Jesus' hunger in suffering refugees . . . through the **USCCB Department of Migration and Refugee Services (MRS)**.

Offer legal assistance to Jesus in struggling immigrants . . . through the **Catholic Legal Immigration Network, Inc. (CLINIC)**.

Reach out to comfort Jesus' loneliness in isolated workers . . . through the pastoral work of the **USCCB Secretariat of Cultural Diversity in the Church**.

## And Around the World

Give water to quench Jesus' thirst in the people of Syria and Niger . . . through the humanitarian work of **Catholic Relief Services (CRS)**.

Advocate on behalf of Jesus in the poor and marginalized . . . through the public policy work of the **USCCB Department of Justice, Peace and Human Development**.

Send aid to Jesus in the victims of natural disaster . . . through the **Holy Father's Relief Fund**.

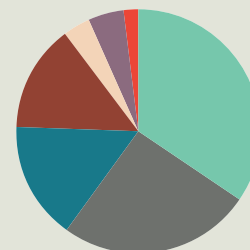
### The Catholic Relief Services Collection 2021

#### Grants

USCCB Migration & Refugee Services	\$1,356,112	34.68%
Holy Father's Relief Fund	\$1,000,000	25.57%
USCCB Cultural Diversity in the Church*	\$608,032	15.55%
USCCB International Justice & Peace	\$545,524	13.95%
USCCB Justice, Peace & Human Development Education & Outreach	\$140,893	3.60%

#### Administration

Promotion & Education Costs	\$184,672	4.72%
Administrative Expenses	\$74,932	1.92%



\* USCCB Cultural Diversity in the Church includes Pastoral Care of Migrants, Refugees & Travelers (\$397,474) and Asian & Pacific Island Affairs (\$210,558).





## RECYCLING PROGRAMS AT THE MADELEINE

Marked collection bins in the breezeway facing 23rd Ave.

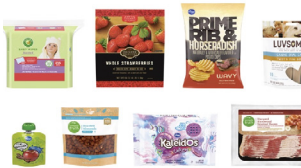
The Madeleine's Laudato Si' Circle and Care for Creation Ministry have joined with U. S. based recycler, Terracycle, to offer our parish, school, and community opportunities to responsibly recycle specific items (primarily plastics) not generally handled at curbside. Terracycle has added more manufacturers to its program, and in turn, we have expanded our recycling offerings. Here is a current listing of what we are collecting. Please keep this in mind:

- ▶ Do not include garbage or items not specifically mentioned in the descriptions.
- ▶ Empty containers of contents. No need to wash first; ensure packaging is dry.



### KROGER FLEXIBLE PLASTICS

All Kroger brand flexible plastic packaging can now be accepted. Includes Private Selection and Simple Truth brands as well.



### HAIR CARE APPLIANCES AND TOOLS

All types and brands of hair care tools and appliances, including hair dryers, straightening irons, curling irons, thermal brushes and mini tools.



### SWIFFER REFILLS



Swiffer only brands of Sweeper™ Dry, Wet, and XL Refills, WetJet Refills™, and Duster™ Refills.

### LATE JULY® SNACKS

All Late July® snack packaging as seen in these examples. Limited to Late July brand only.



### ORAL CARE PRODUCTS

All brands of used or empty oral care products, including toothpaste tubes, tooth brushes, and dental floss containers.



### FOOD STORAGE

All brands of well-used plastic and glass food storage containers.



### GILLETTE® AND VENUS RAZORS AND RAZOR BLADES

All brands of blades and razors (systems and disposable units, and replaceable-blade cartridge units), rigid plastic packaging, and flexible plastic bag packaging.



### CIGARETTE BUTTS, SANTA FE NATURAL TOBACCO COMPANY

All brands of fully extinguished cigarettes (and ashes) and tobacco products, including filters, plastic packaging, inner foil packaging, rolling paper, and loose tobacco pouches.



### BIC WRITING INSTRUMENTS AND PACKAGING

All brands of empty writing instruments, glue sticks, water-color dispensers, highlighters, paint sets, and flexible packaging.



### OFFSITE RECYCLING OPPORTUNITIES FOR FAMILIES REDYPER DISPOSABLE DIAPERS

Subscription service for purchasing and recycling Redyper brand disposable diapers through Terracycle

### LOOP

Offers zero-waste packaging of everyday essentials (beauty, health and personal care, grocery, and household essentials) from leading brands (including Haagen-Dazs!) Details at [www.loopstore.com](http://www.loopstore.com)

Details on all programs at [www.themadeleine.edu/terracycle](http://www.themadeleine.edu/terracycle)





**Timmco**  
INSURANCE

Brian Timm  
Susan Ames | Derek Ames

1615 NE Broadway | 503-288-8818  
www.timmco.com

AUTO | HOME | BUSINESS | LIFE

**TIM WALTERS**

Principal Broker



The most trusted name in Real Estate!

Committed to the NE Portland

Neighborhoods since 1991



503-545-1880 | TimWaltersRealtor@Gmail.com | TimWaltersPc.com



**DDI** benefits

Questions about Medicare?  
We can help!

Emmett Dooney, '11  
Licensed Medicare Agent  
503.206.4080  
medicare@ddibenefits.com



**T.C. O'LEARY'S**  
a little irish  
PUB

2926 NE Alberta Street  
A little taste of Ireland!



Parishioners Tom, Siobhan  
& Aine O'Leary

**JOHN M. WYNN**

ATTORNEY AT LAW

McGill, Kapranos & Wynn  
Parishioner

Hollywood Professional Center, 3939 NE Hancock St., Ste. 305  
jmwpxd@qwestoffice.net • 503-287-7333



**LANCE MARRS**

PRINCIPAL BROKER

503.701.5323

PORTLAND MODERN REAL ESTATE

LICENSED IN OREGON

PORTLANDMODERN.COM



**PAUL MARRS**

MORTGAGE LOAN OFFICER NMLS ID #5212

O:503.781.2114 B:503.994.8559

PMARRS@CANOPYMORTGAGE.COM

CANOPYMORTGAGE.COM/PAULMARRS

CANOPY MORTGAGE

Beaverton Branch Canopy Mortgage, LLC 12655 SW Center Street Beaverton OR 97005 NMLS ID #1359687



**JOSÉ MESA AUTO WHOLESALE, LLC**

"The mobile auto dealer who is always in your neighborhood."

**YOUR DISCOUNT AUTO RETAILER SINCE 1992!**

sales@josemesa.com 503-789-0438 www.josemesa.com

NEW • USED • BUY • SELL • LEASE • TRADE • CONSIGN • BROKER • APPRAISE



**Dr. Phil Doleac, PC**

Orthodontics for all ages  
www.magic-smiles.com

Beaverton Portland Scappoose  
503.644.7009 503.255.1694 503.543.4488

**BUY OR SELL**

**OUR TEAM  
CAN HELP!**

**Opt.**  
REAL ESTATE

**JEFF KERSTEN**  
REALTOR®

503.720.9179  
jeff@theopt.com



**Retrouvaille**  
A Christian Peer Ministry  
A LIFELINE FOR  
HURTING MARRIAGES

Is your marriage tearing  
you and your family apart?

Weekends held 3 times per year in Oregon

www.helpourmarriage.com  
503-704-7382

Donated by Kevin & Carol McMenamin

**DOSIER CONSTRUCTION**

Kitchen & Bathroom Remodels

503-985-9982

Austin Dosier, Parishioner

austin@dosierconstruction.com OR CCB 215259

**ANNE C. STEINER**

ESTATE PLANNING  
ELDER LAW ATTORNEY

503.946.8361 • 1915 NE Cesar Chavez Blvd.  
PARISHIONER - anne.c.steiner@gmail.com

WILLS - TRUSTS - PROBATE  
GUARDIANSHIP - CONSERVATORSHIP



Dr. John R. Lewis

*Beaumont Vision*

*Beaumont Vision:  
providing full-  
service eyecare  
for all ages,  
including com-  
prehensive  
exams, glasses  
and contacts*

Stop by to view our unique  
eyewear

Most insurances accepted

4331 NE Fremont St

Ph: 503-331-3937

**JOHN W. LOBO  
PAINTING**

Custom Interior & Exterior  
Creative Finishes  
503-969-3337 CCB#89027  
Licensed Bonded Insured



**Sweetly Aimee, LLC**  
Custom Wedding and All-  
Occasion Cakes and Desserts

Aimee Holzschuh  
Parishioner & Parent  
503.998.7368

www.SweetlyAimee.com



**PAUL MYERS, Ph.D., LLC**  
PSYCHOTHERAPY, COUNSELING  
& CONSULTING SERVICES

(503) 381-6685 paulmyersphdpdx@gmail.com  
www.paulmyersphdpdx.com

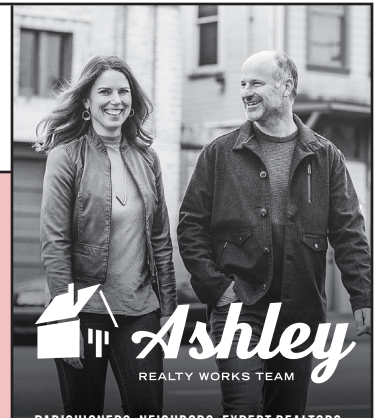


**THEORY  
MORTGAGE**

*Beating Banks Daily*

Brian DuVal  
503-850-7667

NMLS 5912, NMLS 1848246



PARISHIONERS, NEIGHBORS, EXPERT REALTORS

Wick & Karoline Ashley

karoline@ashleyrealtyworks.com

(503) 819-4851

237 NE Broadway Suite 100

**RE/MAX**  
equity group

**Mark McGinnis**

Parishioner, Parent  
Mortgage Advisor

NMLS 98586

503-348-4917

"It's about service!"



mark.mcginis@neohomeloans.com



**WILLAMETTE  
FINANCIAL ADVISORS, LLC**  
PERSONALIZED ADVICE FROM TRUSTED ADVISORS

**James M Jones**

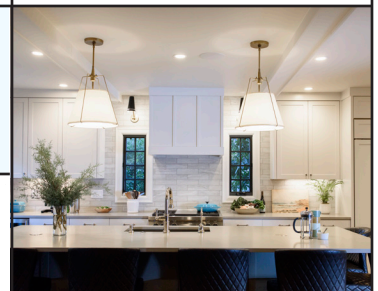
Financial Advisor, CFP®

Parishioner

Direct 503.284.9200

Office 503.7470306

jimj@wfinadv.com



Whole house remodels  
• Kitchens • Bathrooms  
• Basements • Additions  
In-house architecture & design

Nathalie Roloff, Parishioner

503.245.0685  
roloffconstruction.com

4300 NE Fremont #130

CCB #140721  
WA#ROLOFC1873KU



Bulletin Advertising: contact Rich Hammons • bulletin@themadeleine.edu • 503--281-5777