

THIS WEEK AT THE MADELEINE

Furthering the Reign of God, Where All Are Welcome • February 11–12, 2023

COMMUNAL PENANCE SERVICE

Thursday, February 16 • 6:30 pm • Main Church

After a couple years without due to the pandemic, we are pleased to again offer our Communal Penance Service.

This service provides a unique opportunity for Catholics to confess sins and find forgiveness. Communal reconciliation

reminds us that our sin affects others and that we can be forgiven for the wrong we've done. Occurring just before Lent, on February 16, this Communal Penance is open to all parishioners. Additional priests will participate in hearing confessions.

FAITH SHARING GROUPS FORMING FOR LENT—RECRUITING LEADERS

Back by popular demand, we're planning Faith Sharing Groups for parishioners and friends to come together during Lent. (If you've never participated in a Faith Sharing Group, there's a brief description on Page 4 or at www.themadeleine.edu/faith-sharing) Groups will meet during the Lenten season at homes, the rectory, the school, online—anywhere. Right now we're seeking leaders

who might want to facilitate a group on any day and time that is convenient for you. Deacon Mike promises to make it easy, to provide a ton of support if you want it, and to walk with you as you open your heart to the Spirit of God. Interested? Please call, text or email Deacon Mike (deaconmike@themadeleine.edu, 503-726-6507).

“ECOLOGICAL CONVERSION” WITH ANNALISE MICHAELSON

Tuesday, February 28, 6:30 pm • The Old Madeleine Church

Please join Horticulturalist Annalise Michaelson for a provocative discussion about creative ways for integrating faith and spirituality in the context of gardening and the use of native plants.

Annalise is a volunteer on staff with the Saint Kateri Conservation Center in New York. She learned about The Madeleine upon our campus' designation as Oregon's first Saint Kateri Habitat Site. Through this designation, Annalise has graciously offered her time and talents as we pledge to transform our multi-use grounds to be even more inviting to people, plants, and animals.

Vibrant and engaging, Annalise is a native plant enthusiast and proud Catholic convert. She found a home in Catholicism where her love of nature and faith beautifully intersect. She is as passionate about

ecologically friendly landscaping as she is about sharing this practice with the public.

Frustrated by the anti-human and pessimistic stance adopted by many modern environmental organizations, Annalise is thrilled to be volunteering with the Saint Kateri Conservation Center to help foster love, hope, and deep connection to God through creation.

Come learn more about the Eco-Spirituality movement and Annalise's inspiring story. You will come away with unique ideas for transforming your personal gardens and hear about the exciting plans she has for our parish grounds.

If you are interested in joining a working group to help plan for the enhancement of our parish property, email Annalise, annalise.saintkateri@gmail.com

Sixth Sunday in Ordinary Time

Today's readings build upon last week's focus on expectations. Living the Christian life requires a deep sense of responsibility and a desire to go beyond the minimum of the law. Spiritual maturity and integrity lies somewhere between deadening legalism and a casual approach that mocks the rules and takes pride in “getting away with it.” We are given the freedom to act responsibly. We pray for the wisdom to discern what that means and to live accordingly.

PRAY FOR OUR FAITHFULLY DEPARTED

- ▶ Herman Schnidrig—Funeral Feb. 18, 11:00 am
- ▶ Dolores Seybold—Funeral March 4, 11:00 am
- ▶ Christie Kmetz—Funeral March 11, 11:00 am
- ▶ Pam Wigggin—Funeral March 29, 10:00 am
- ▶ Alan Morrill
- ▶ Claire Howe
- ▶ Jesse Kissinger
- ▶ Jeremy Powell
- ▶ Ernie Wynn

PRAYER REQUESTS

For those who are ill, or in need of our prayers

- ▶ Mason Lugar
- ▶ Chadd Garvens
- ▶ Aaron Stevenson

WORSHIP & PRAYER

- 02/14, Tues. Mary Biewend †
- 02/15, Weds. Bo Stirm †
- 02/16, Thurs Matthew Cullen †
- 02/17, Fri Alan Morrill †
- 02/18, Sat John Babchek †
- 02/19, Sun, 8:00 am . . . The Madeleine Community
- 10:00 am Kitt and Corinne Jordan

Madeleine Provisions
Premium Proteins
Restaurant-Quality Proteins.
Wholesale Prices. See Page 5

Calendar This Week

SUNDAY, FEBRUARY 12

- ▶ Catholic Home Missions Collection
- 8:00 am: Mass—Church
- 8:45 am: RCIA—St. Catherine Room
- 10:00 am: Mass—Church  **ALSO LIVESTREAMS**
- 11:00 am: Knights Pancake Breakfast—Parish Hall

MONDAY, FEBRUARY 13

- 6:30 pm: FA Meeting—Fireside Rm

TUESDAY, FEBRUARY 14

- 8:00 am: Mass—Church
- 9:00 am: Adoration—Church
- 1:30 pm: Confirmation Grade 7—Fireside Rm

WEDNESDAY, FEBRUARY 15

- 8:00 am: Mass—Church
- 2:45 pm: Children's Choir—Church
- 5:30 pm: Chimes Rehearsal—Church
- 6:30 pm: Pastoral Council & SAC Joint Meeting—Fireside Rm
- 7:00 pm: Madeleine Choir—Church

THURSDAY, FEBRUARY 16

- 8:30 am: Confirmation Grade 8—Fireside Rm
- 2:00 pm: School Mass—Church
- 3:00 pm: Confirmation—Church
- 6:30 pm: Communal Penance Service—Church
- 7:00 pm: Parent's Club—Library

FRIDAY, FEBRUARY 17

- 8:00 am: Mass—Church

SATURDAY, FEBRUARY 18

- 11:00 am: Herman Schnidrig Funeral—Church
Reception follows in Fireside Rm
- 5:00 pm: Mass—Church
- 6:00 pm: Passion Play Reunion—Fireside Rm

SUNDAY, FEBRUARY 19

- 8:00 am: Mass—Church
- 10:00 am: Mass—Church  **ALSO LIVESTREAMS**

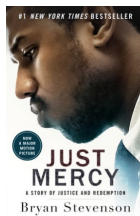
SAVE THE DATE

- ▶ **Ash Wednesday:** February 22
- ▶ **Ecological Conversion Presentation:** February 28
- ▶ **St. Patrick's Day Dinner:** March 11
- ▶ **Fish Fry:** April 12
- ▶ **Wine Tasting:** August 26
- ▶ **Parish Picnic/Oktoberfest:** October 8
- ▶ **Madeleine Marketplace:** December 7

PARISH LIFE

BOOK CLUB NEWS

February is Black History Month. We are reading a book we believe will be an excellent choice for discussion mid-month. There is still time to pick up a copy of *Just Mercy: A Story of Justice and Redemption*, by Bryan Stevenson to read before our upcoming session. This nonfiction work has also been made into a movie, starring Michael B. Jordan as Stevenson and Jamie Foxx as the death row inmate McMillan. For meeting details, to be added to our email list, or to submit a prayer request to our group, please contact our MBC ministry coordinator: Gretchen Stevenson, gypsyfrau47@yahoo.com or 503-312-6834.



WORLDWIDE MARRIAGE ENCOUNTER:

“Just so, your light must shine before others, that they may see your good deeds and glorify your heavenly Father.”

Let the light of your marriage sacrament shine for all. Make your light bright by attending the next Worldwide Marriage Encounter Experience on April 21-23 (virtual), or June 9-11 in Salem, Oregon. To apply for your WWME experience or search other dates go to rediscoverthespark.org

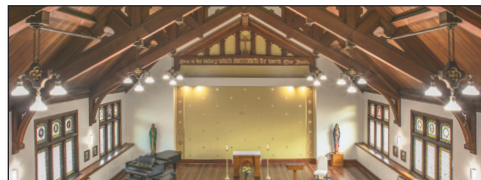
For information about WWME call 503-704-0836 or by email at reservations@rediscoverthespark.org

MILESTONES

Baptism

Congratulations and welcome to **Maxwell and Clara Orlowski** children of Katherine and Tyler Orlowski, who joined the Church through the sacrament of baptism on Thursday.

Parish Office will be closed Monday, February 20 for Presidents Day



Upcoming concerts at The Madeleine

Performances in The Old Madeleine Church unless noted

- ▶ **February 14, 7:00 pm** • 45th Parallel Universe • Whoever You Are, I Love You: A Valentine's Day Journey with Zach Galatis • www.45thparallelpdx.org
- ▶ **February 22, 7:00 pm** • 45th Parallel Universe • Treasures of the Baroque • www.45thparallelpdx.org



In the Gospel Jesus says: “Whoever fulfills and teaches these commands shall be great in the kingdom of God.” By your gift to the Society of St. Vincent de Paul you indeed put your faith into action as you fulfill the commands of Jesus.

Mark your calendar and join Us in-person at Portland Golf Club!

The 88th Annual Archbishop's Seminary Tea

Benefiting the education of seminarians preparing to serve in the Archdiocese of Portland Oregon

Seminary Tea Committee



Founded 1935

Wednesday, April 19, 2023, 3-6 PM
Portland Golf Club
5900 SW Scholls Ferry Road
Portland 97225

To purchase tickets or donate go to <https://www.seminarytea.org/donate.html> or mail donation to Seminary Tea Committee PO Box 25057/Portland, OR 97298.

SAVE THE DATE

APRIL 21 • PARISH HALL



Fantastic Fish, Family Fun
WWW.THEMADELEINE.EDU/FISHFRY

—Mary Clare O'Brien, 503-309-7639



Mmm...Pancakes!

KNIGHTS OF COLUMBUS PANCAKE BREAKFAST
SUNDAY, FEBRUARY 12 AFTER 10:00 MASS

Join us in the Parish Hall for a great pancake breakfast! Lots of yummy food...at a very affordable price.



Donations accepted



Madeleine Knights of Columbus annual

ST. PATRICK'S DAY DINNER



THE MADELEINE PARISH HALL

SATURDAY, MARCH 11 • DOORS OPEN AT 6:00, DINNER AT 7:00 PM
TAKE-OUT DINNERS 6:00–6:45 PM (prepaid only)

All you can EAT Corned Beef & Cabbage; includes cole slaw & traditional vegetables.

"Pot of Gold" Raffle & Irish Dancing



Tickets \$35 ^{UNDER 12} Kids \$10



RESERVATIONS & tickets:

Order tickets or take-out at www.themadeleine.edu/st-pats

Or Contact Trieu Nguyen 503-720-0155 or John Wynn 503-309-4170

Proceeds to benefit Mother & Child Education Center and Madeleine Scholarship Fund

45TH PARALLEL UNIVERSE

Join us for concerts this February at the Madeleine!



WHOEVER YOU ARE, I LOVE YOU

A Valentines journey with Zach Galatis

February 14
7:00 pm
The Madeleine

Lovers unite! Zach Galatis brings his considerable vocal talents to this special evening of song in honor of Valentine's Day.



TREASURES OF THE BAROQUE

February 22
7:00 pm
The Madeleine

45th Parallel founder Greg Ewer welcomes flutist Martha Long, keyboardist Byron Schenkman and violinist Adam LaMotte for an evening of Baroque masterpieces performed on historical instruments.



Learn more at 45thparallelpdx.org



WEEKLY MASS TIMES

Regular Mass Times:

Tuesday, Wednesday, Friday 8:00 am
Thursday. No School: 8:00 am
During School: 2:00 pm
Saturday Vigil 5:00 pm
Sunday 8:00 am, 10:00 am

► Livestream 10:00 am Sunday
at youtube.com/themadeleineparish

PenanceBy appointment; call Parish Office

PARISH OFFICE

Hours Monday–Friday, 10:00 am–3:00 pm

Phone: 503-281-5777 **Fax:** 503-281-0673

School Office. 503-288-9197

PARISH STAFF

Rev. Mike Biewend—Pastor
fathermike@themadeleine.eduext. 111

Deacon Mike O'Mahoney—Permanent Deacon
deaconmike@themadeleine.edu

Carol Glasgow—School Principal
cglasgow@themadeleine.edu . . . 503-288-9197

John Garrow—Business Manager
jgarrow@themadeleine.eduext. 118

My Schoning—Assistant Business Manager
mhoang@themadeleine.eduext. 118

Darlene Maurer—Pastoral Assistant
dmaurer@themadeleine.edu ext. 125

Therese Fenzl—Director of Spiritual Ministries
tfenzl@themadeleine.eduext. 116

Maria Manzo—Director of Music
mmanzo@themadeleine.eduext. 113

Guy Allen—Events Manager
gallen@themadeleine.edu

Mary Prusso—Registration
mprusso@themadeleine.eduext. 112

Julie Kupers—Special Events
jkupers@themadeleine.edu . . . 720-936-5635

Janeen Reilly—Parish Administrator
jreilly@themadeleine.eduext. 110

Terry Silva—Facilities Support
tsilva@themadeleine.eduext. 117

Rich Hammons—Director of Communications
rhammons@themadeleine.edu ext. 129

SACRAMENTS

Marriages, Funerals, Anointing of the Sick—
Fr. Mikeext. 111

Infant Baptism—Darlene Maurer ext. 125

First Reconciliation, First Eucharist—
Rose Horton. sac-prep@themadeleine.edu

RCIA—Christi Bohmbach, rcia@themadeleine.edu

Confirmation—Fr. Mike.ext. 111

COUNCILS & CONTACTS

Pastoral Council—Meg Scharle

Finance Council—Jim Jones. 503-284-3301

Buildings & Grounds—Erin Couch . . . 503-281-9575

School Advisory—Tim Resch503-984-46072

Facility Requests—themadeleine.edu/facilities

Maintenance Requests—John Garrow
jgarrow@themadeleine.eduext. 118

St Vincent de Paul (Food, utility, rent assistance)
Mary Clare O'Brien. 503-309-7639

Ministry Schedule
www.themadeleine.edu/minister-schedule

Bulletin submissions due 5:00 pm Tuesday.
Email to bulletin@themadeleine.edu

In Memoriam

THE MADELEINE FAMILY REMEMBERS

HERMAN EDWARD SCHNIDRIG

Funeral Mass—Saturday, February 18, 11:00 am

A Funeral Mass will be held for Herman Schnidrig on Saturday, February 18, 11:00 am, at The Madeleine.

Herm was born in Trail, B.C., to Joseph Herman “Herman” Schnidrig and Olga Schnidrig neé Watzlawec. While skiing at Red Mountain, BC in 1954, he met the love of his life, Winefride “Winnie” Bouchier. He graduated from Washington State College (now University), where he was a member of Phi Kappa Phi and Tau Bet Pi, in 1954 with a BS degree in mechanical engineering. Herm immigrated to Portland, Oregon in 1955, received his Professional Engineer license in 1958, and became a U.S. citizen in 1962. He was very driven, working his way through the ranks to Vice-President of Manufacturing by the 1970s. His employers included PGE, Hydreco, Wagner Mining Equipment, Rucker, and Columbia Machine.

Herm enjoyed a number of athletic activities over the years, ranging from football to tennis and racquetball to bicycling and hiking, but skiing was always at the top of the list. He and Winnie taught skiing for Riverdale Ski School from the 1950s into the 1970s. In later years, a favorite pastime was bicycling and other recreation with his “Over the Hill Gang” group. Herm greatly enjoyed annual sno-cat ski trips to the Selkirk mountains in BC. He skied well into his late 70s, biked until his early 80s, and hiked until his late 80s. He relaxed at his Mt. Hood cabin where he often hiked and by visiting friends and family in BC.

Charming and charismatic, Herm was always a task master, and became a bit of a curmudgeon, with a well-hidden soft side, as he aged. He was a daily visitor to his wife during her very long battle with Parkinson’s disease. He was a strict parent, but his children enjoyed his tall tales and learned their love



of a wide-variety of music and social dancing from him. Herm loved a good joke, much to the amusement of some of his many nieces and nephews.

Herm is survived by his children, Veronica Schnidrig (Bruce Bailey), Eric Schnidrig, Michael Schnidrig, and Matthew Schnidrig, 10 grandchildren, 12 great grandchildren, and his beloved Cocker Spaniel, Molly. He was predeceased by his wife, Winnie, his daughter Christine LaBore, and a grandson, Daniel Schnidrig.

Please pray for Herman, his family, and all the faithfully departed from The Madeleine

WHAT ARE FAITH SHARING GROUPS?

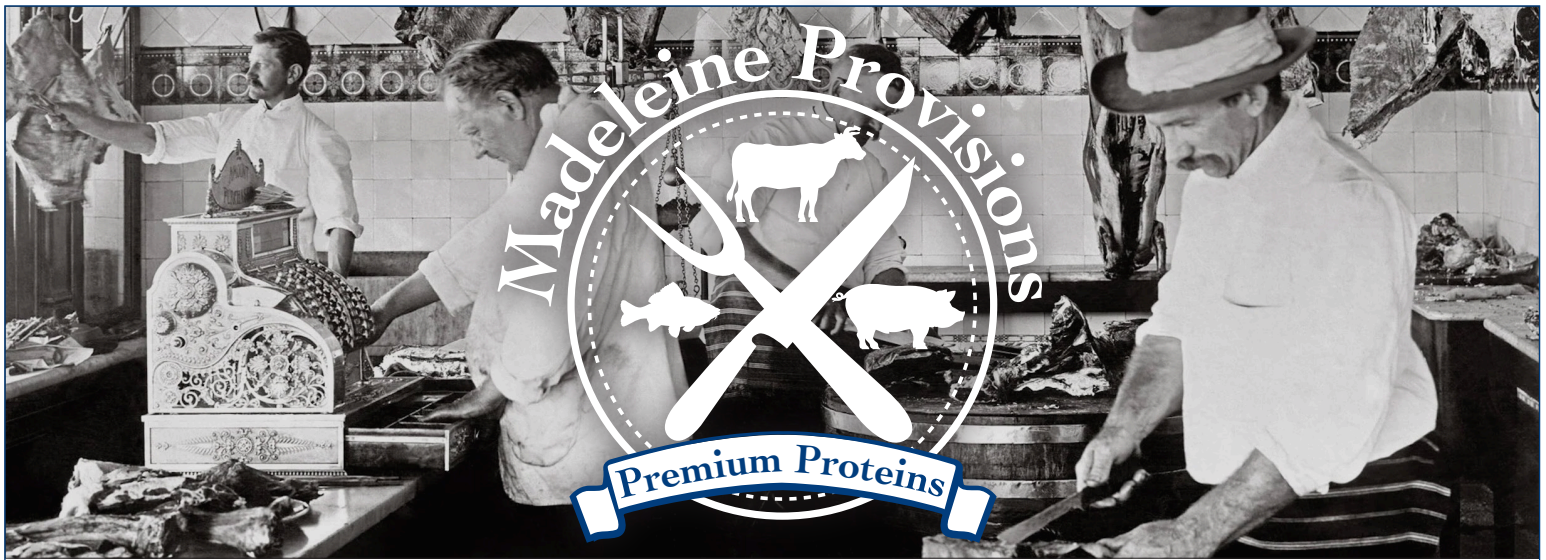
They are small groups of wonderful people who are journeying together for a brief period. Participants want to better know a loving God and realize they might need to stop and listen. Faith Sharing participants won’t let Easter just slip past; they have a sense that, even though they have no free time, perhaps they should make time for this. They are moms, dads, teenagers, college students, grandparents, religious, single, married, gay, trans, tired, overwhelmed, confused, too busy, introverts and extroverts, feeling good and feeling badly ... did I not mention you? Well, I meant to. There are no exceptions or exclusions. The Spirit of God only includes

and embraces and that’s why you should participate -- we need you to participate.

The groups meet for about an hour 3-5 times during Lent (February 22–April 9). You choose a time/day of the week that works for you, join a group, and stay with the group for your journey through Lent. You’ll decide with your group how often you meet. There is a loose structure to the gathering that includes scripture reading, reflections, and prayer. The point is not to share what’s happening in your life, or to make new friends, or to study the bible, or to express your well-developed opinion about whatever. The whole reason we gather is to give the Spirit of God the

chance to speak and be heard. In humility, we are often quiet and immerse ourselves in the scripture that has been shared -- allowing it to settle in our hearts. We share our responses to questions posed as we are compelled and listen intently to others because God speaks to us through scripture and each other. And then our time together ends in prayer. You’ll leave with a renewed appreciation of how God’s Spirit is alive and active in you and others. It’s powerful, profound, and personal. You are being redeemed before your very eyes.

Would you like to lead a group? See article on front page for information.



MADELEINE PROVISIONS FEBRUARY FLASH SALE

Restaurant-quality proteins, wholesale prices!
Beef, pork, game meats and fish

This fundraiser for the Madeleine Parish offers you top quality beef, pork, fish and more at wholesale prices. These are the same quality (and higher!) meats and seafood you will find at premium grocery stores but at much lower prices...even with the small margin we've added for the fundraiser. Enjoy and thank you!

How it works:

- ▶ Place your order by Noon on **Tuesday, February 14**
- ▶ Pick up your order at the carport near the Main Church on **Thursday, February 16, 3:00-6:00 pm.**
- ▶ Everything is conveniently **FROZEN** and expertly cryo-vac'd, ready for your freezer.
- ▶ All items are sold **BY THE CASE**, with the exception of the King Salmon and Tuna Poke. A case more than you need? Split it with a friend!

Our Premium Proteins:

- ▶ **AUSTRALIAN WAGYU BEEF**—Crossbred from Japanese Wagyu cows, no hormones or antibiotics. The closest you can get to Japanese Wagyu at a fraction of the price. Characterized by an almost sweet flavor and tender texture. The speckled marbling brings incredible richness and depth of flavor.
- ▶ **ANGUSPURE SPECIAL RESERVE PASTURE RAISED NEW ZEALAND BEEF**—pasture-raised, grass-fed, grass-finished Angus beef. No hormones or antibiotics. Fed and grass finished in a rain rich (phytonutrient flooded) environment. The meat has low PH levels and is leaner than American beef, while retaining the rich tastes and textures that steak lovers crave.
- ▶ **PREMIUM PORK, LAMB, GAME MEATS AND FISH**—Neuske's Applewood Smoked Bacon • Sakura Duroc Pork Chops • Family-farmed free-range, grass-fed Lamb • Bison, Elk, Venison, and Wild Boar • New Zealand King Salmon Fillets • Ahi Poke cubes.



Order before noon on February 14
www.themadeleine.edu/provisions



STRENGTHENING THE CHURCH AT HOME



Home mission dioceses across the country face similar challenges: small Catholic populations, great distances between parishes, and economic hardships that make it difficult for parishes to meet the pastoral needs of their communities. In northern Alabama's Diocese of Birmingham, for instance, one parish is the only Catholic church in its county. Another parish affected by high unemployment and underemployment lacks resources to pay for youth ministry and parish activities. Despite these economic challenges, the diocese is committed to forming disciples in the parishes and providing quality education to poor and minority students.

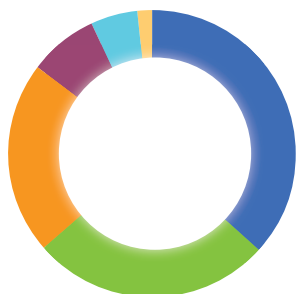
Support from Catholic Home Missions makes the day-to-day ministries of these parishes possible through grants to the diocese for parish operations, training of parish catechetical leaders, youth ministry support, and one-on-one attention to help struggling Catholic school pupils succeed in their education. When you support the Catholic Home Missions Appeal, your contribution helps dioceses like Birmingham keep their parishes open and available to meet the pastoral needs of their communities.

For more information about the Catholic home missions, visit www.usccb.org/home-missions.

What Is a Home Mission Diocese?

Home mission dioceses are those Catholic dioceses in the United States, its territories, and former territories that cannot provide basic pastoral services without outside help. Basic pastoral services include Mass, the sacraments, religious education, and ministry training for priests, deacons, religious sisters, and laypeople. Nearly 40% of dioceses in the United States and its territories are considered home missions.

CHMA FINANCIALS 2021

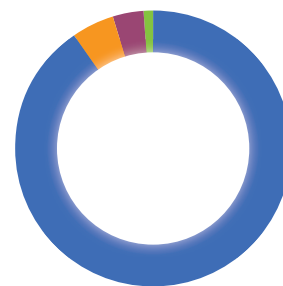


Totals by Program Area

• Diocesan and Parish Assistance	\$3,410,000
• Faith Formation	\$2,505,000
• Priestly and Religious Vocations	\$2,017,500
• Cultural Ministries*	\$715,000
• Strengthening Marriage and Family Life	\$485,000
• Life and Dignity of the Human Person†	\$150,000

Total: \$9,282,500

*including Hispanic and other ethnic and cultural ministries
†including prison ministries and ministries for persons with disabilities



• Grants and Donations	\$8,084,200
• Program Costs	\$432,593
• Promotions and Fundraising Expenses	\$336,841
• Administrative Expenses	\$81,035

Total Expenses: \$8,934,669



CATHOLIC HOME MISSIONS APPEAL

OFFICE OF NATIONAL COLLECTIONS

3211 FOURTH STREET NE • WASHINGTON, DC 20017-1194

202-541-3400 • FAX 202-541-3460 • WWW.USCCB.ORG/NATIONALCOLLECTIONS



God's Gift of Forgiveness

A Pastoral Exhortation on the Sacrament of Penance and Reconciliation

Dear Brothers and Sisters in Christ:

"Peace be with you!" With these words, the Risen Lord greeted his frightened Apostles in the Upper Room on the day of his Resurrection. They were troubled, anxious, and fearful—much like each one of us at some point in our lives. Christ repeated the words, "Peace be with you." But then he added, "Receive the holy Spirit. Whose sins you forgive are forgiven them" (Jn 20:19-23).

What an extraordinary gift! The Risen Lord was proclaiming that all the suffering he had just endured was in order to make available the gifts of salvation and forgiveness. He wanted the Apostles to receive these gifts. He wanted them to become apostles of this forgiveness to others.

In the Sacrament of Penance and Reconciliation, also called confession, we meet the Lord, who wants to grant forgiveness and the grace to live a renewed life in him. In this sacrament, he prepares us to receive him free from serious sin, with a lively faith, earnest hope, and sacrificial love in the Eucharist. The Church sees confession as so important that she requires that every Catholic go at least once a year.¹ The Church also encourages frequent confession in order to grow closer to Christ Jesus and his Body, the Church. By the grace of the Holy Spirit, we seek forgiveness and repentance, let go of patterns

of sin, grow in the life of virtue, and witness to a joyful conversion. Since the graces of the sacrament are so similar to the purpose of the New Evangelization, Pope Benedict XVI has said, "The New Evangelization . . . begins in the confessional!"²

We bishops and priests are eager to help you if you experience difficulty, hesitation, or uncertainty about approaching the Lord in this sacrament. If you have not received this healing sacrament in a long time, we are ready to



welcome you. We, whom Christ has ordained to minister this forgiveness in his name, are also approaching this sacrament, as both penitents and ministers, throughout our lives and at this special moment of grace during Lent. We want to offer ourselves to you as forgiven sinners seeking to serve in the Lord's name.

During Lent—in addition to the various penitential services during which individual confession takes place—we bishops and priests will be making ourselves available often for the individual celebration of this sacrament. We pray that through the work of the Holy Spirit, all Catholics—clergy and laity—will respond to the call of the New Evangelization to encounter Christ in the Sacrament of Penance and Reconciliation. Come to the Lord and experience the extraordinary grace of his forgiveness!

¹ *Catechism of the Catholic Church*, nos. 1457-1458.

² Pope Benedict XVI, Address to the Annual Course on the Internal Forum Organized by the Apostolic Penitentiary, www.vatican.va/holy_father/benedict_xvi/speeches/2012/march/documents/hf_ben-xvi_spe_20120309_penitenzieria-apostolica_en.html.

FAITH
WORSHIP
WITNESS



JOURNEY
WITH CHRIST



Timmco
INSURANCE

Brian Timm
Susan Ames | Derek Ames

1615 NE Broadway | 503-288-8818
www.timmco.com

AUTO | HOME | BUSINESS | LIFE

TIM WALTERS

Principal Broker



The most trusted name in Real Estate!

Committed to the NE Portland

Neighborhoods since 1991



503-545-1880 | TimWaltersRealtor@Gmail.com | TimWaltersPc.com

Mark McGinnis

Parishioner, Parent
Mortgage Advisor

NMLS 98586
971-300-0484
mark.mcginis@spmc.com
"It's about service!"



T.C. O'LEARY'S
a little irish
PUB

2926 NE Alberta Street
A little taste of Ireland!



Parishioners Tom, Siobhan
& Aine O'Leary

JOHN M. WYNN

ATTORNEY AT LAW

McGill, Kapranos & Wynn
Parishioner

Hollywood Professional Center, 3939 NE Hancock St., Ste. 305
jmwpxd@qwestoffice.net • 503-287-7333



LANCE MARRS

PRINCIPAL BROKER

503.701.5323

PORTLAND MODERN REAL ESTATE

LICENSED IN OREGON

PORTLANDMODERN.COM



PAUL MARRS

MORTGAGE LOAN OFFICER NMLS ID #5212

O:503.781.2114 B:503.994.8559

PMARRS@CANOPYMORTGAGE.COM

CANOPYMORTGAGE.COM/PAULMARRS

CANOPY MORTGAGE

Beaverton Branch Canopy Mortgage, LLC 12655 SW Center Street Beaverton OR 97005 NMLS ID #1359687



JOSÉ MESA AUTO WHOLESALE, LLC

"The mobile auto dealer who is always in your neighborhood."

YOUR DISCOUNT AUTO RETAILER SINCE 1992!

sales@josemesa.com 503-789-0438 www.josemesa.com

NEW • USED • BUY • SELL • LEASE • TRADE • CONSIGN • BROKER • APPRAISE



Dr. Phil Doleac, PC

Orthodontics for all ages
www.magic-smiles.com

Beaverton Portland Scappoose
503.644.7009 503.255.1694 503.543.4488

BUY OR SELL



**OUR TEAM
CAN HELP!**

Opt.
REAL ESTATE

JEFF KERSTEN
REALTOR®
503.720.9179
jeff@theopt.com



Retrouvaille
A Christian Peer Ministry
A LIFELINE FOR
HURTING MARRIAGES

Is your marriage tearing
you and your family apart?

Weekends held 3 times per year in Oregon

www.helpourmarriage.com
503-704-7382

Donated by Kevin & Carol McMenamin

DOSIER CONSTRUCTION

Kitchen & Bathroom Remodels

503-985-9982

Austin Dosier, Parishioner

dosierconstruction@gmail.com OR CCB 215259

ANNE C. STEINER

ESTATE PLANNING
ELDER LAW ATTORNEY

503.946.8361 • 1915 NE Cesar Chavez Blvd.
PARISHIONER - anne.c.steiner@gmail.com

WILLS - TRUSTS - PROBATE
GUARDIANSHIP - CONSERVATORSHIP



Dr. John R. Lewis

Beaumont Vision

*Beaumont Vision:
providing full-
service eyecare
for all ages,
including com-
prehensive
exams, glasses
and contacts*

*Stop by to view our unique
eyewear
Most insurances accepted*

4331 NE Fremont St

Ph: 503-331-3937

**JOHN W. LOBO
PAINTING**

Custom Interior & Exterior
Creative Finishes
503-969-3337 CCB#89027
Licensed Bonded Insured



Sweetly Aimee, LLC
Custom Wedding and All-
Occasion Cakes and Desserts

Aimee Holzschuh
Parishioner & Parent
503.998.7368
www.SweetlyAimee.com



PAUL MYERS, Ph.D., LLC
PSYCHOTHERAPY, COUNSELING
& CONSULTING SERVICES

(503) 381-6685 paulmyersphdpdx@gmail.com
www.paulmyersphdpdx.com

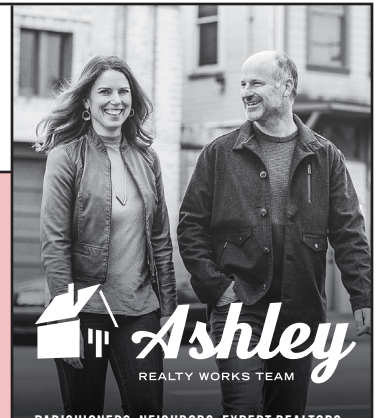


**THEORY
MORTGAGE**

Beating Banks Daily

Brian DuVal
503-850-7667

NMLS 5912, NMLS 1848246



PARISHIONERS, NEIGHBORS, EXPERT REALTORS

Wick & Karoline Ashley
karoline@ashleyrealtyworks.com
(503) 819-4851
237 NE Broadway Suite 100

RE/MAX
equity group

**CITY HOME
IMPROVEMENT, Inc.**

Kitchens | Bathrooms | Additions
Since 1956

Please visit our showroom or call
for a free in-home estimate

503-253-7591

www.cityhomeimprovementinc.com
8811 NE Sandy Blvd. Portland, OR 97220



James M Jones

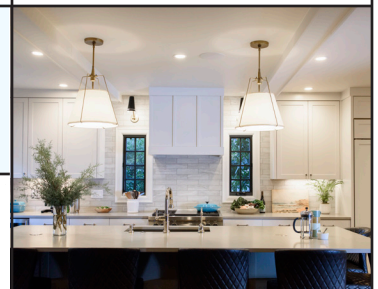
Financial Advisor, CFP®

Parishioner

Direct 503.284.9200

Office 503.7470306

jimj@wfinadv.com



Whole house remodels
• Kitchens • Bathrooms
• Basements • Additions
In-house architecture & design

Nathalie Roloff, Parishioner

503.245.0685
rolloffconstruction.com
4300 NE Fremont #130



CCB #140721
WA#ROLOFC1873KU

Bulletin Advertising: contact Rich Hammons • bulletin@themadeleine.edu • 503--281-5777