

THE MADELEINE SCHOOL 2023-24 REGISTRATION: OPEN HOUSE & TOURS

It's that time of year again...time to start thinking about school enrollment for Fall 2023. We invite all interested parents and guardians and their children to come visit the school, and learn more about our commitment to providing an academically excellent and faith-filled education for the children of our community.



Spread the word to your friends and neighbors and tell them to give our principal, Carol Glasgow, a call for more information about our school.

Open House and Tours, January 29

Open House and Tours of the school will be held on Sunday, January 29, right after Mass until 1:30 pm. All teachers will be

in their classrooms to meet prospective new parents and students!

Priority registration for parishioners

Priority registration is offered for all registered parishioners at The Madeleine until January 30, 4:00 pm.

To receive in-parish tuition rates, families must be registered and

active in the parish for at least 6 months prior to enrollment.

Financial aid is available. Please contact the school office for details.

For more information or to register, visit www.themadeleine.edu/school or contact Carol Glasgow, cglasgow@themadeleine.edu or 503-288-9197.

MADELEINE SAFETY & SECURITY COMMITTEE—JANUARY 4

The Madeleine Safety & Security Committee's next meeting is scheduled for Wednesday, January 4, from 7 to 8 pm, in the Fireside Room. Appropriate COVID precautions will be followed to ensure the health and well-being of everyone in attendance.

The Madeleine Safety & Security Committee serves in an advisory capacity, supporting the efforts of the school and the Pastoral Council to provide a safe and secure faith experience. The Committee is currently drafting an Emergency Action Plan, providing a framework for

preparedness planning, decision-making, and emergency response to a disaster, pandemic, or other critical events.

The Committee welcomes new members from diverse fields and backgrounds to enrich our discussion and broaden our vision in our efforts to provide for the safety of our Madeleine School children, parents and parishioners. If you have an interest in becoming a member, or are looking for more information, please contact Dan O'Brien, Safety & Security Committee Chair, at safety@themadeleine.edu or visit our web page: www.themadeleine.edu/safety

Inside this week's bulletin:

- ▶ **Giving Tree thank you from Northwest Family Services**—Marianne Kersten thanks our community for our outpouring of generosity at our annual Giving Tree. Page 4.
- ▶ **Refugee Relief Fund**—This winter, The Madeleine provided some funds to Catholic Charities to help two groups of refugees...one to help them stay in the US, and one to help them get home to their native country. See Page 5.

Solemnity of Mary, Holy Mother of God

Today's feast focuses on the role of Mary in the wonderful miracle of the Incarnation. She was closest to all that happened, and it was she who came to know that God is here with, for and among us. As we celebrate this feast of Mary as the Mother of God, we, too, pause to ponder. What does it mean to be the Mother of God? What does this title say about Mary? About God? About us? And about the church that gave her this title? We begin this new year with fascinating questions.

PRAY FOR OUR FAITHFULLY DEPARTED

- ▶ Sr. Frances Harold
- ▶ Claude Leonard
- ▶ John Flynn
- ▶ Kathleen Nims
- ▶ Pam Wiggin
- ▶ Sarah Warner
- ▶ James (Jim) Hopson

PRAYER REQUESTS

For those who are ill, or in need of our prayers

- ▶ Christie Kmetz
- ▶ Bill Stack
- ▶ Jesse Kissinger
- ▶ Mason Lugar
- ▶ Chadd Garvens

WORSHIP & PRAYER

01/03, Tues. Sr. Frances Harold †
 01/04, Weds. Claude Leonard †
 01/05, Thurs. Pam Wiggin †
 01/06, Fri. Marie Hong Tran †
 01/07, Sat. Kathleen Nims †
 01/08, Sun. Simran Ruta


JANUARY BIRTHDAYS

Happy birthday to some of our honored parishioners!

- ▶ Robert Burke
- ▶ Sherrill Resch
- ▶ John McComb
- ▶ Janice Bower
- ▶ Michael Bower
- ▶ Christina Muniz
- ▶ Ann Dufour

Calendar This Week

SUNDAY, JANUARY 1, 2023

- ▶ Mary, Mother of God Holy Day
- ▶ No 8:00 am Mass today
- 10:00 am: Mass—Church  **ALSO LIVESTREAMS**

MONDAY, JANUARY 2

- ▶ Parish Office Closed
- 6:30 pm: FA Meeting—Fireside Rm

TUESDAY, JANUARY 3

- 8:00 am: Mass—Church
- 9:00 am: Adoration—Church
- 7:00 pm: Knights of Columbus—Fireside Rm

WEDNESDAY, JANUARY 4

- 8:00 am: Mass—Church
- 2:45 pm: Children's Choir Rehearsal
- 5:30 pm: Chimes Rehearsal
- 7:00 pm: Madeleine Choir
- 7:00 pm: Safety and Security—Fireside Rm

THURSDAY, JANUARY 5

- 2:00 pm: School Mass —Church
- 6:30 pm: Metropolitan Youth—Parish Hall


FRIDAY, JANUARY 6

- 8:00 am: Mass—Church
- 6:30 pm: Metropolitan Youth—Parish Hall

SATURDAY, JANUARY 7

- 1:30 pm: Metropolitan Youth—Parish Hall
- 5:00 pm: Mass—Church

SUNDAY, JANUARY 8

- ▶ Epiphany
- 8:00 am: Mass—Church
- 8:45 am: RCIA—St. Catherine Room
- 8:50 am: Confirmation—Fireside Rm
- 10:00 am: Mass—Church  **ALSO LIVESTREAMS**



Upcoming concerts at The Madeleine

Performances in The Old Madeleine Church unless noted

- ▶ **January 12, 7:00 pm** • 45th Parallel Universe
 - When the Violin, Vijay Gupta and Greg Ewer •
 - www.45thparallelpdx.org
- ▶ **January 26, 7:00 pm** • 45th Parallel Universe
 - Brave New World, six flute players •
 - www.45thparallelpdx.org

PARISH LIFE

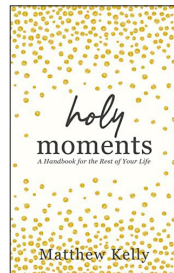
BOOK CLUB NEWS

Would you enjoy opportunities to discuss some very excellent books with friends? We invite you to start the year off right by joining our genial group! Our January book is *These Precious Days*, by Ann Patchett. For more information and/or to be added to our email list, please contact our MBC ministry coordinator: Gretchen Stevenson, gypsyfrau47@yahoo.com or 503-312-6834.



PICK UP YOUR COPY OF HOLY MOMENTS, OUR GIFT THIS CHRISTMAS

We still have a few copies of Matthew Kelly's *Holy Moments* as a Christmas gift from the parish (one per family please). From the liner notes: Some ideas are so powerful that simply becoming aware of them changes our lives forever. *Holy Moments* is such an idea. It is profoundly simple, astonishingly practical, and once you discover it, your life will finally make sense. It's time to let *Holy Moments* show you what is possible. It is time to explore your soul-potential.



STRESS IN YOUR MARRIAGE?

Retrouvaille is a program for married couples who feel stressed, bored, frustrated, or angry in their marriage. Some experience coldness and simply shut down. Others experience conflict and arguments in their relationship and don't know how to change the situation or even communicate with their spouses about it. Retrouvaille is for any couple who would like to rediscover their marriage and improve communication. Visit www.helpourmarriage.org for emotional testimonials and program information. For confidential information or to register for the January 20-22, 2023 Oregon weekend at Our Lady of Peace Retreat Center in Beaverton, Oregon, call 503-225-9191.



Today is the feast of Mary, Mother of God. Like Mary may we always treasure the events in our life and reflect on them in our heart. Please remember to support the Society of St. Vincent de Paul in 2023 so that together we can continue to bring comfort and peace to our brothers and sisters who are poor and suffering. May the peace and joy of the New Year be yours!

AUDIO/VIDEO MINISTRY NEEDS YOUR HELP!

As we begin to return to Mass each weekend, we are looking to include some of the "extras" we've had in the past...including the weekly use of our video screens for Breaking Bread references, videos and song lyrics. But we need help running them! This is a very important ministry, as the screens help to enhance our worship experience.



Presentations run on a Macintosh laptop using software similar to Powerpoint—you simply run the presentations by advancing from screen to screen. The presentations are already built...you don't need to edit or create them. Just run them. It's easy! Full training is included. Interested? Please contact Rich Hammons, rhammons@the-madeleine.edu

WORLDWIDE MARRIAGE ENCOUNTER

We wish you all a blessed New Year! Make the best decision this year for your marriage by attending a Worldwide Marriage Encounter Experience on January 13-15 at Our Lady of Peace Retreat House in Beaverton. To apply for YOUR WWME Experience or search other dates go to rediscoverthespark.org. For information about WWME call 503-704-0836 or by email at reservations@rediscoverthespark.org

“The Love of God that was revealed in Bethlehem brings consolation to our hearts troubled by the drama of the war in #Ukraine and in other parts of the world. Let us remember that the last word in the history of humanity belongs to God because “everything pertains to love.””

—Pope Francis via Twitter
@pontifex

45TH PARALLEL UNIVERSE



Join us for concerts this January at the Madeleine!



WHEN THE VIOLIN



Friends of Greg
January 12
7:00 pm



BRAVE NEW WORLD

"The flute of the infinite
is played without ceasing,
and its sound is love."

- Kaber

Martha Long
January 26
7:00 pm

For tickets and information
45thparallelpdx.org



WEEKLY MASS TIMES

Regular Mass Times:

Tuesday, Wednesday, Friday 8:00 am
Thursday No School: 8:00 am
During School: 2:00 pm
Saturday Vigil 5:00 pm
Sunday 8:00 am, 10:00 am

▶ Livestream 10:00 am Sunday
at youtube.com/themadeleineparish

Penance By appointment; call Parish Office

PARISH OFFICE

Hours Monday–Friday, 10:00 am–3:00 pm

Phone: 503-281-5777 **Fax:** 503-281-0673

School Office 503-288-9197

PARISH STAFF

Rev. Mike Biewend—Pastor
fathermike@themadeleine.edu ext. 111

Deacon Mike O'Mahoney—Permanent Deacon
deaconmike@themadeleine.edu

Carol Glasgow—School Principal
cglasgow@themadeleine.edu 503-288-9197

John Garrow—Business Manager
jgarrow@themadeleine.edu ext. 118

My Schoning—Assistant Business Manager
mhoang@themadeleine.edu ext. 118

Darlene Maurer—Pastoral Assistant
dmaurer@themadeleine.edu ext. 125

Therese Fenzl—Director of Spiritual Ministries
tfenzl@themadeleine.edu ext. 116

Maria Manzo—Director of Music
mmanzo@themadeleine.edu ext. 113

Allison Blakemore—Bookkeeper
ablakemore@themadeleine.edu ext. 119

Guy Allen—Events Manager
gallen@themadeleine.edu

Mary Prusso—Registration
mprusso@themadeleine.edu ext. 112

Julie Kupers—Special Events
jkupers@themadeleine.edu 720-936-5635

Janeen Reilly—Parish Administrator
jreilly@themadeleine.edu ext. 110

Terry Silva—Facilities Support
tsilva@themadeleine.edu ext. 117

Rich Hammons—Director of Communications
rhammons@themadeleine.edu ext. 129

SACRAMENTS

Marriages, Funerals, Anointing of the Sick—
Fr. Mike ext. 111

Infant Baptism—Darlene Maurer ext. 125

First Reconciliation, First Eucharist—
Rose Horton sac-prep@themadeleine.edu

RCIA—Christi Bohmbach, rcia@themadeleine.edu

Confirmation—Fr. Mike ext. 111

COUNCILS & CONTACTS

Pastoral Council—Meg Scharle

Finance Council—Jim Jones 503-284-3301

Buildings & Grounds—Erin Couch 503-281-9575

School Advisory—Tim Resch 503-984-46072

Facility Requests—themadeleine.edu/facilities

Maintenance Requests—John Garrow
jgarrow@themadeleine.edu ext. 118

St Vincent de Paul (Food, utility, rent assistance)
Mary Clare O'Brien 503-309-7639

Bulletin submissions due 5:00 pm Tuesday
Email to bulletin@themadeleine.edu

**REGISTRATION
NOW OPEN FOR
CAMP
HOWARD**

2023 OPEN HOUSES

May 6th | **June 25th**
2 PM to 5 PM | 2 PM to 5 PM

11010 SE Camp Howard Road
Corbett, OR 97019

For registration & further information
cyocamphoward.org



A Giving Tree Thank You

"Once again, I struggle to find the words of gratitude to The Madeleine community for supporting my students through The Madeleine Giving Tree. Many are struggling with food and housing insecurity and all have one or both parents behind bars. Their Christmas season would be bleak without being blessed by the generous spirit of all of you. And this year a tree was planted in each of their names which they all thought was fabulous. On behalf of each of my students, I send you a huge thank you and prayers for a wonderful 2023."

Marianne Kersten
Northwest Family Services
Families Affected by Incarceration



Refugee Relief Program: Outreach Fund at work

As Catholics and as members of The Madeleine Community, we are all aware of our obligation to the world around us. Catholic Social Teachings, common sense as good stewards, and exhortations by Father Mike—these all ask us to look beyond ourselves to help those in need. Below, we have two examples of The Madeleine doing just that.

REFUGEE FAMILY REPATRIATION

Recently, as we were working with Catholic Charities to adopt families for our annual Giving Tree, Father Mike asked, “Is there some more we can do?” Catholic Charities responded that they are working with a refugee family in need of some additional help.

The family was brought to the United States under false pretenses, then subjected to human trafficking here for years. Thankfully, the individuals who were causing the abuse were eventually caught, and the family was freed. Their next problem: How could they get back to their native South American home. That’s where Catholic Charities asked us to help.

Father Mike authorized use of our parish’s Outreach Fund to write a check to Catholic Charities to help pay the cost of airfare for this

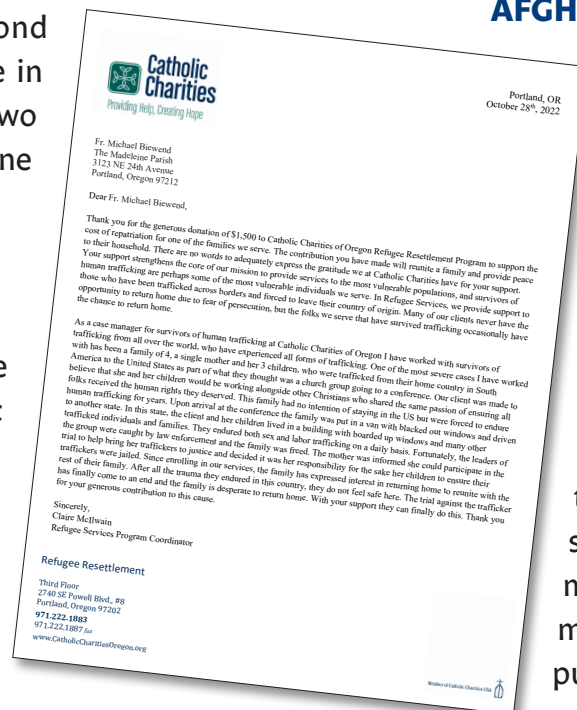
family. It’s a heart-wrenching story we don’t have space to print here, but you can read the story in the thank-you letter we received at www.themadeleine.edu/cc-letter

AFGHAN SISTERS

Parishioner Catherine Glavan has been working with Catholic Charities’ Refugee Resettlement program for years, and brought to us another situation: Two Afghan sisters who were evacuated by the US military and are being resettled in Portland by Catholic Charities. After hearing of their story, Father Mike authorized parish funds to pay the security deposit on a new apartment for the sisters that will be much safer for them and closer to public transportation.

REFUGEE RESETTLEMENT FUND

These are just two stories among hundreds of refugees in our community—people who need help paying for rent, utilities, food, and clothing. At The Madeleine, we recognize our obligation to help and our privilege to be able to do so. If you would like to support this ministry, we would appreciate your donations. Donations may be made online at www.themadeleine.edu/refugee-relief or via check to the parish office (be sure to note “Refugee Relief” on your check to make sure it gets to the correct fund).



Donate at www.themadeleine.edu/refugee-relief

The Liturgical Year



January 1: Mary, the Holy Mother of God

January 1 is New Year's Day to most of the world, but in the Catholic Church, it is also the Solemnity of Mary, the Holy Mother of God. This is a relatively new title for the day. Older Catholics will remember that we used to call January 1 the Feast of the Circumcision.

Circumcision may not seem like much to have a feast about, but the day commemorated an event in the life of Jesus, just as we have days for his Conception, Birth, Presentation in the Temple, Baptism, Transfiguration, Death, and Resurrection. Luke specifically mentions the circumcision of Jesus (2:21). It took place, according to the custom, on the eighth day after his birth. That is why the feast commemorating the event fell on the eighth day of Christmas. It just happened to be New Year's Day. The same passage from Luke says Jesus then received his name.

That is why the old calendar celebrated the Most Holy Name of Jesus on the Sunday between the Feasts of the Circumcision and the Epiphany. If no Sunday intervened, the feast occurred on January 2. It is now an optional memorial on January 3.

In present times, the Gospel passage for January 1 still refers to the circumcision, but the new title for the feast seems to have another verse in mind, Luke 2:19. There we hear that Mary treasured all the things that happened and the words that were said and pondered them in her heart. On the octave day of the birth of Jesus, we celebrate Mary, who bore him.

On January 1, we are also expected to pray for world peace. In the United States, this day is a holyday of obligation unless it falls on a Monday or a Saturday.

Christmas in January

When does Christmas end? It depends. If you are asking about the social celebration in the United States, it comes to an end on Christmas Day. Stores take down their decorations. "After-Christmas" sales begin. Holiday music disappears from radio stations. And in many homes, people pull down the tree, package up the manger, and tuck away the stockings.

Food is about the only thing left. You'll probably still have Christmas cookies and leftovers from the big family dinner. But otherwise, evidence of Christmas goes into hiding until sometime next autumn.

It's different at church. Most Catholic churches in the United States will leave their Christmas decorations up through the end of the liturgical Christmas season, which extends from Christmas Day through the Solemnities of Mary, Mother of God (January 1); Epiphany (the

following Sunday); and the Baptism of the Lord (usually the Sunday after Epiphany, but in some years the very next day). The priest and deacon will switch from white vestments to green ones when Ordinary Time begins in earnest after observing the Baptism of the Lord.

This is why you may still see poinsettias and other decorations lasting well into January—but only at church. The decorations are one way that we express our complete belief in the meaning of this day. We have too much to celebrate on December 25. To grasp the full meaning of that day, we extend Christmastime well into January.

You could do the same at your home. Leave some decorations in place—both inside and outside the house. Let your home be a place where Christmas is too big to be restricted to one day. Let the spirit of the season extend into the New Year, spreading its joy that Christ is born for us.

RECYCLING PROGRAMS AT THE MADELEINE

Marked collection bins in the breezeway facing 23rd Ave.

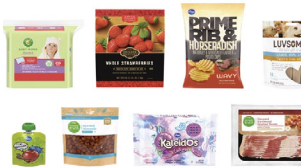
The Madeleine's Laudato Si' Circle and Care for Creation Ministry have joined with U. S. based recycler, Terracycle, to offer our parish, school, and community opportunities to responsibly recycle specific items (primarily plastics) not generally handled at curbside. Terracycle has added more manufacturers to its program, and in turn, we have expanded our recycling offerings. Here is a current listing of what we are collecting. Please keep this in mind:

- ▶ Do not include garbage or items not specifically mentioned in the descriptions.
- ▶ Empty containers of contents. No need to wash first; ensure packaging is dry.



KROGER FLEXIBLE PLASTICS

All Kroger brand flexible plastic packaging can now be accepted. Includes Private Selection and Simple Truth brands as well.



METAL-BASED COOKWARE AND CUTLERY

All brands of metal-based cookware, bakeware, and cutlery (non-stick Aluminum, Stainless Steel, Carbon Steel, Cast Iron). Please make sure items are thoroughly clean and dry.



SWIFFER REFILLS



Swiffer only brands of Sweeper™ Dry, Wet, and XL Refills, WetJet Refills™, and Duster™ Refills.

LATE JULY® SNACKS

All Late July® snack packaging as seen in these examples. Limited to Late July brand only.



ORAL CARE PRODUCTS

All brands of used or empty oral care products, including toothpaste tubes, tooth brushes, and dental floss containers.



FOOD STORAGE

All brands of well-used plastic and glass food storage containers.



GILLETTE® AND VENUS RAZORS AND RAZOR BLADES

All brands of blades and razors (systems and disposable units, and replaceable-blade cartridge units), rigid plastic packaging, and flexible plastic bag packaging.



CIGARETTE BUTTS, SANTA FE NATURAL TOBACCO COMPANY

All brands of fully extinguished cigarettes (and ashes) and tobacco products, including filters, plastic packaging, inner foil packaging, rolling paper, and loose tobacco pouches.



BIC WRITING INSTRUMENTS AND PACKAGING

All brands of empty writing instruments, glue sticks, water-color dispensers, highlighters, paint sets, and flexible packaging.



OFFSITE RECYCLING OPPORTUNITIES FOR FAMILIES

REDYPER DISPOSABLE DIAPERS

Subscription service for purchasing and recycling Redyper brand disposable diapers through Terracycle

LOOP

Offers zero-waste packaging of everyday essentials (beauty, health and personal care, grocery, and household essentials) from leading brands (including Haagen-Dazs!) Details at www.loopstore.com

Details on all programs at www.themadeleine.edu/terracycle



Timmco
INSURANCE

Brian Timm
Susan Ames | Derek Ames

1615 NE Broadway | 503-288-8818
www.timmco.com

AUTO | HOME | BUSINESS | LIFE

TIM WALTERS

Principal Broker



The most trusted name in Real Estate!

Committed to the NE Portland

Neighborhoods since 1991



503-545-1880 | TimWaltersRealtor@Gmail.com | TimWaltersPc.com

Mark McGinnis

Parishioner, Parent
Mortgage Advisor

NMLS 98586
971-300-0484
mark.mcginis@spmc.com
"It's about service!"



T.C. O'LEARY'S
a little irish
PUB

2926 NE Alberta Street
A little taste of Ireland!



Parishioners Tom, Siobhan
& Aine O'Leary

JOHN M. WYNN

ATTORNEY AT LAW

McGill, Kapranos & Wynn
Parishioner

Hollywood Professional Center, 3939 NE Hancock St., Ste. 305
jmwpxd@qwestoffice.net • 503-287-7333



LANCE MARRS

PRINCIPAL BROKER

503.701.5323

PORTLAND MODERN REAL ESTATE

LICENSED IN OREGON

PORTLANDMODERN.COM



PAUL MARRS

MORTGAGE LOAN OFFICER NMLS ID #5212

O:503.781.2114 B:503.994.8559

PMARRS@CANOPYMORTGAGE.COM

CANOPYMORTGAGE.COM/PAULMARRS

CANOPY MORTGAGE

Beaverton Branch Canopy Mortgage, LLC 12655 SW Center Street Beaverton OR 97005 NMLS ID #1359687



JOSÉ MESA AUTO WHOLESALE, LLC

"The mobile auto dealer who is always in your neighborhood."

YOUR DISCOUNT AUTO RETAILER SINCE 1992!

sales@josemesa.com 503-789-0438 www.josemesa.com

NEW • USED • BUY • SELL • LEASE • TRADE • CONSIGN • BROKER • APPRAISE



Dr. Phil Doleac, PC

Orthodontics for all ages
www.magic-smiles.com

Beaverton Portland Scappoose
503.644.7009 503.255.1694 503.543.4488

BUY OR SELL



**OUR TEAM
CAN HELP!**

Opt.
REAL ESTATE

JEFF KERSTEN
REALTOR®
503.720.9179
jeff@theopt.com



Dr. John R. Lewis

Beaumont Vision

*Beaumont Vision:
providing full-
service eyecare
for all ages,
including com-
prehensive
exams, glasses
and contacts*

*Stop by to view our unique
eyewear
Most insurances accepted*

4331 NE Fremont St

Ph: 503-331-3937

**JOHN W. LOBO
PAINTING**

Custom Interior & Exterior
Creative Finishes
503-969-3337 CCB#89027
Licensed Bonded Insured



Sweetly Aimee, LLC
Custom Wedding and All-
Occasion Cakes and Desserts

Aimee Holzschuh
Parishioner & Parent
503.998.7368
www.SweetlyAimee.com



PAUL MYERS, Ph.D., LLC

PSYCHOTHERAPY, COUNSELING
& CONSULTING SERVICES

(503) 381-6685 paulmyersphdpdx@gmail.com
www.paulmyersphdpdx.com

Retrouvaille
A Christian Peer Ministry
A LIFELINE FOR
HURTING MARRIAGES

Is your marriage tearing you
and your family apart?

Weekends held every February, June &
October at Mt. Angel Retreat Home

www.helpourmarriage.com
503-704-7382

Donated by Kevin & Carol McMenamin

DOSIER CONSTRUCTION

Kitchen & Bathroom Remodels

503-985-9982

Austin Dosier, Parishioner

dosierconstruction@gmail.com OR CCB 215259

ANNE C. STEINER

ESTATE PLANNING
ELDER LAW ATTORNEY

503.946.8361 • 1915 NE Cesar Chavez Blvd.
PARISHIONER - anne.c.steiner@gmail.com

WILLS - TRUSTS - PROBATE
GUARDIANSHIP - CONSERVATORSHIP

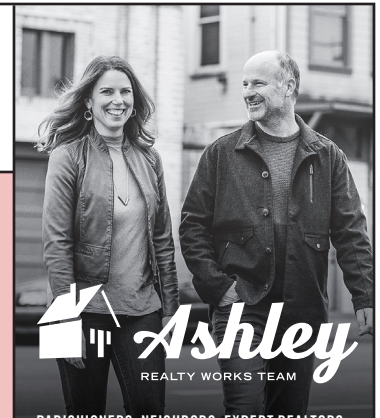


THEORY
MORTGAGE

Beating Banks Daily

Brian DuVal
503-850-7667

NMLS 5912, NMLS 1848246



PARISHIONERS, NEIGHBORS, EXPERT REALTORS

Wick & Karoline Ashley

karoline@ashleyrealtyworks.com

(503) 819-4851

237 NE Broadway Suite 100



**CITY HOME
IMPROVEMENT, Inc.**

Kitchens | Bathrooms | Additions

Since 1956

Please visit our showroom or call
for a free in-home estimate

503-253-7591

www.cityhomeimprovementinc.com
8811 NE Sandy Blvd. Portland, OR 97220



James M Jones

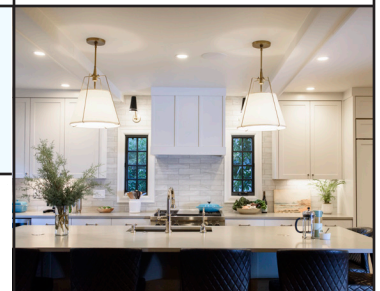
Financial Advisor, CFP®

Parishioner

Direct 503.284.9200

Office 503.7470306

jimj@wfinadv.com



Whole house remodels

• Kitchens • Bathrooms

• Basements • Additions

In-house architecture & design

Nathalie Roloff, Parishioner

503.245.0685

roloffconstruction.com

4300 NE Fremont #130

CCB #140721
WA#ROLOFC1873KU



Bulletin Advertising: contact Rich Hammons • bulletin@themadeleine.edu • 503--281-5777