

Walk in the Light

Advent 2022 at The Madeleine

Advent Wreath Rings and Candles

November 26 & 27

An Advent wreath in the home is a beautiful religious tradition. Brass wreath rings are free while supplies last, and a set of candles is \$5. Both are available after our weekend Masses.

Advent Faith Sharing, Therese Fenzl

- ▶ Sundays, Nov. 27, Dec. 4, 11 & 18, 11:15 am (In person)
- ▶ Mondays, Nov. 28, Dec. 5, 12 & 19, 6:30 pm (Zoom). Email to tfenzl@themadeleine.edu for Zoom invitation.

Reconciliation

No Communal Reconciliation Service this season, but the sacrament is available by appointment. Contact the Parish Office.

Feast of the Immaculate Conception

Thursday, December 8

8:00 am & 2:00 pm Mass—We join on this feast day to celebrate Mary’s ongoing intervention for us and the grace given to her from God, shared through all time and circumstance.

The Madeleine Marketplace

Thursday, December 8 • Parish Hall

2:00 pm, Marketplace • 6:00 pm, Tree Lighting & Carols

Get a jump on holiday shopping, and enjoy food, refreshments, and adult beverages. Photos with Santa, too!

More details, events and Christmas Mass times at www.themadeleine.edu/advent

Knights’ Annual Pancake Breakfast

Sunday, December 11 • Parish Hall

11:00 am—A family affair, with great food and fellowship by the Knights of Columbus.

A Northwest Christmas II with Bravo! Northwest

Sunday, December 11 • Main Church

3:00 pm—This popular holiday concert features the Bravo! Chorale, Soloists, and Chamber Orchestra in the virtuosic Bach “Magnificat” and highlights from Handel’s “Messiah” as well as your favorite Christmas carols.

Cello Nutcracker with 45th Parallel Universe

Weds., Dec. 14 • Old Madeleine Church

7:00 pm—Six brilliant Cellists, one Nutcracker! Join 45th Parallel Universe for this holiday classic, a tradition that always brings smiles and holiday cheer.

School Christmas Program

Thursday, December 15 • Main Church

6:30 pm—Join us for this annual family tradition!

Choir at the Grotto

- ▶ Madeleine Children’s Choir • Friday, December 16, 5:15 pm
- ▶ Madeleine Choir & Chimes • Sunday, December 18, 5:00 pm

First Sunday of Advent

As we begin this Advent season, we focus on the universal spiritual practice of being awake—deeply aware. It’s not that we’re sleeping, but that it’s so easy to become distracted by the ordinary demands of life—especially in this holiday season. It is so easy to overlook what is truly most important, but staying alert is hard. God is always present to us; Jesus comes in many guises, many ways. If we’re not alert, we miss it all. What will it take to keep us focused?

PRAY FOR OUR FAITHFULLY DEPARTED

- ▶ Pam Wiggin
- ▶ Kathleen Nims
- ▶ Sarah Warner
- ▶ Kathleen Gaitan
- ▶ James (Jim) Hopson
- ▶ Jan Sheahan
- ▶ Shirley Hughey-Smith
- ▶ Robert Moriarty
- ▶ Lisa Nice
- ▶ Thomas Meixner
- ▶ Betty Couch
- ▶ J.C. Kizak
- ▶ Sally McKeon

PRAYER REQUESTS

For those who are ill, or in need of our prayers

- ▶ Auxere Francois
- ▶ Jesse Kissinger
- ▶ Aaron Stevenson
- ▶ Nancy Sharff
- ▶ Mason Lugar
- ▶ Minh Ha Nguyen
- ▶ Debbie Barsotti
- ▶ Bill Stack
- ▶ Dolores Seybold
- ▶ Chadd Garvens
- ▶ Raymond P. Meixner

WORSHIP & PRAYER

- 11/29, Tues Mary Hall †
- 11/30, Weds Kathryn Burk †
- 12/01, Thurs Braden Tapley †
- 12/02, Fri Marie Hong Tran †
- 12/03, Sat Cecil Keith †
- 12/04, Sun. 8:00 am . . . The Madeleine Community
- 10:00 am Mary Hall †



Pick up your Advent devotional book at Masses or download at www.themadeleine.edu/advent

Calendar This Week

SUNDAY, NOVEMBER 27

8:00 am: Mass—Church

9:00 am—Soul Box Exhibit—Parish Hall

10:00 am: Mass—Church  **ALSO LIVESTREAMS**

MONDAY, NOVEMBER 28

6:30 pm: FA Meeting—Fireside Rm

6:30 pm: Discerning Catholic—St. Catherine Rm

TUESDAY, NOVEMBER 29

8:00 am: Mass—Church

9:00 am: Adoration—Church

WEDNESDAY, NOVEMBER 30

8:00 am: Mass—Church

2:30 pm: Clean Club Meeting—Fireside Rm

2:45 pm: Children's Choir Rehearsal

7:00 pm: Madeleine Choir

THURSDAY, DECEMBER 1

2:00 pm: School Mass—Church

3:15 pm: Glee Club—Fireside Rm

FRIDAY, DECEMBER 2

► School Noon Dismissal, Teacher Inservice

8:00 am: Mass—Church

SATURDAY, DECEMBER 3

3:00 pm: Altar Server Training—Church

3:30 pm: Baptism of Zoe & Sawyer Kleffner—Church

5:00 pm: Mass—Church

SUNDAY, DECEMBER 4

8:00 am: Mass—Church

8:45 am: RCIA—St. Catherine Room

8:50 am: Confirmation Class—Fireside Rm

10:00 am: Church  **ALSO LIVESTREAMS**

11:15 am: Faith Sharing—Rectory Dining

11:30 am: Madeleine Singers

SAVE THE DATE

► **The Madeleine Marketplace:** December 8
themadeleine.edu/marketplace

► **Ash Wednesday:** February 22

PARISH LIFE

ADVENT CANDLES AND WREATH RINGS AVAILABLE AFTER MASSES

November 27 marks the first week of Advent and the tradition of the Advent Wreath. After Masses on November 26–27, we will again offer candles for purchase (\$5/pack while supplies last) and free brass rings. To complete your Advent wreath, we encourage collecting your own greens.



Symbolism of the Advent Wreath

The circle of the wreath, which has no beginning or end, symbolizes the eternity of God, the immortality of the soul, and the everlasting life we find in Christ.

The candles also have their own special significance, representing the four weeks of Advent, and one candle is lit each Sunday. Three of the candles are purple because the color violet is a liturgical color signifying a time of prayer, penance, and sacrifice. On the fourth week of Advent, we light

the final purple candle to mark the final week of prayer and penance as we wait for the birth of our Savior. This final candle, the “Angel’s Candle,” symbolizes peace. It reminds us of the message of the angels: “Peace on Earth, Good Will Toward Men.”



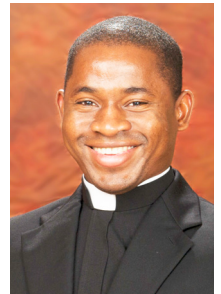
BOOK CLUB NEWS

We are very thankful for the support of our wonderful MBC members!

We invite other parishioners and friends to join us in this ministry to read and discuss interesting books. For further information please contact Gretchen Stevenson, 503-312-6834 or gypsyfrau47@yahoo.com

PILGRIMAGE TO THE HOLY LANDS WITH FR. ANTHONY

Fr. Anthony Ahamfule, former Seminarian Intern and Deacon at The Madeleine, is leading a pilgrimage to the Holy Lands beginning March 6, 2023. Itinerary, information, costs and to sign up: www.bit.ly/tmp-anthony



Mmm...Pancakes!

KNIGHTS OF COLUMBUS PANCAKE BREAKFAST SUNDAY, DECEMBER 11 AFTER 10:00 MASS

Join us in the Parish Hall for a great pancake breakfast!
Lots of yummy food...at a very affordable price.



Adults \$5 ♦ Families \$15 ♦ Kids 12 & under \$3

Sign up online at www.themadeleine.edu/pancakes



There is an Advent spirit in the heart of every human person. It is one of longing, of yearning for a fulfillment that somehow lies beyond ourselves; for we long for the coming of the Lord. Through your gift to the Society of St. Vincent de Paul, your heart will discover the true meaning of Christmas as you help those who are suffering and poor to long for the coming of the Lord.
—Mary Clare O'Brien, 503-309-7639

SOUL BOX PROJECT ENDS THIS WEEKEND

The Soul Box Project, a national community art project raising awareness about the scale of lives lost due to the misuse of guns, is on display in the Parish Hall through November 27. The exhibit will

be available for viewing after all weekend Masses this weekend.

For more information, visit www.themadeleine.edu/soulbox

DISCERNING CATHOLIC: THE SPIRIT OF THE NEW YEAR

In the opening verse of the first of his Anacreontic Poems, Sophronius of Jerusalem (AD 560-638) seeks the intercession of the Virgin Mary:

“From the Spirit of God that came upon the apostles/grant me a fiery tongue, Mary, by your prayers.”

I can imagine St. Anthony of Padua (my patron saint) uttering a similar prayer as he gave his first sermon before an ordination of Dominican and Franciscan Brothers and again before each of his more than 400 journeys across Europe preaching the Gospel. It is a prayer, I think, worth keeping in my heart for the courage it gives to speak plainly about faith in a world that

would rather talk about other things. This is the challenge I’ve given myself for Advent and the new liturgical year: to speak plainly and simply about faith, a most basic and yet fragile component of human awareness.

If you’d like to join in these sorts of conversations, the Discerning Catholic Ministry meets Monday November 28 at 6:30 pm in the St. Catherine Room. We will be meeting in-person taking appropriate Covid precautions. We also plan to concurrently host a virtual meeting specifically to accommodate individuals unable to attend in-person. For more information, or if you would like to attend virtually, please email Dan O’Brien at discerningcatholic@themadeleine.edu

MADELEINE MARKETPLACE DECEMBER 8

Fun, food, music, shopping, tree lighting, Santa and much more!

Save the date for our annual tradition, The Madeleine Marketplace and Tree Lighting Thursday, December 8, from 2-8 pm.

Plan to stay for a fun-filled afternoon and evening. Get your shopping started with 50 or more vendors in the Parish Hall and Fireside Room.

We’ve got dinner covered

Cook’s night off! We will have pizza, chili, churros, spring rolls, soft drinks, bake sale goodies and much more.

Bake Sale goodies needed—We need your baked goods for our bake sale! Bake your best cookies, pies, cakes, candies, then bring them to the Parish Hall on Thursday, December 8 by 10:00 am.

Be a Marketplace Vendor! www.themadeleine.edu/marketplace

Here’s your chance to sell your wares to hundreds of parents, kids, parishioners and community members as they get a kick start on their Christmas shopping, buy hostess gifts for holiday entertaining, and much more.

And this year, we’re offering free booths to Madeleine Parish & School youth.

For complete information and to sign up for a vendor table at the Marketplace, visit www.themadeleine.edu/marketplace



Entertainment? Christmas caroling, photos with Santa and Mrs. Santa, cookie decorating and more. And the Tree Lighting at 6:00 pm

Volunteers needed

Help make this night go off without a hitch by signing up for one of our volunteer slots. Sign up online at www.themadeleine.edu/marketplace

Questions? Contact Julie Kupers (720) 936-5635 or jkupers@themadeleine.edu

Vendor FAQ:

- ▶ Table fee is \$60; Registration deadline November 28
- ▶ The event ends at 8 pm; Vendors can begin setup at 1:00 pm on December 8.
- ▶ Tables will be assigned.
- ▶ 8-foot rectangular tables & 60” round tables available; specify your preference when you register.
- ▶ Vendors take payments at their own risk.
- ▶ The Marketplace organizers retain the right to refuse vendors if the products are not appropriate. Please no cannabis products.

WEEKLY MASS TIMES

Masses:

Tuesday, Wednesday, Friday 8:00 am
 Thursday No School: 8:00 am
 During School: 2:00 pm
 Saturday Vigil 5:00 pm
 Sunday 8:00 am, 10:00 am

▶ Livestream 10:00 am Sunday
 at youtube.com/themadeleineparish

Penance . . . By appointment; call Parish Office

PARISH OFFICE

Hours Monday–Friday, 10:00 am–3:00 pm

Phone: 503-281-5777 **Fax:** 503-281-0673

School Office 503-288-9197

PARISH STAFF

Rev. Mike Biewend—Pastor
fathermike@themadeleine.edu ext. 111

Deacon Mike O’Mahoney—Permanent Deacon
deaconmike@themadeleine.edu

Carol Glasgow—School Principal
cglasgow@themadeleine.edu 503-288-9197

John Garrow—Business Manager
jgarrow@themadeleine.edu ext. 118

My Schoning—Assistant Business Manager
mhoang@themadeleine.edu ext. 118

Darlene Maurer—Pastoral Assistant
dmaurer@themadeleine.edu ext. 125

Therese Fenzl—Director of Spiritual Ministries
tfenzl@themadeleine.edu ext. 116

Ben Clark—Care for Creation Coordinator
bclark@themadeleine.edu

Maria Manzo—Director of Music
mmanzo@themadeleine.edu ext. 113

Allison Blakemore—Bookkeeper
ablakemore@themadeleine.edu ext. 119

Guy Allen—Events Manager
gallen@themadeleine.edu

Mary Prusso—Registration
mprusso@themadeleine.edu ext. 112

Julie Kupers—Special Events
jkupers@themadeleine.edu 720-936-5635

Janeen Reilly—Parish Administrator
jreilly@themadeleine.edu ext. 110

Terry Silva—Facilities Support
tsilva@themadeleine.edu ext. 117

Rich Hammons—Director of Communications
rhammons@themadeleine.edu ext. 129

SACRAMENTS

Marriages, Funerals, Anointing of the Sick—

Fr. Mike ext. 111

Infant Baptism—Darlene Maurer ext. 125

First Reconciliation, First Eucharist—
 Rose Horton sac-prep@themadeleine.edu

RCIA—Christi Bohmbach, rcia@themadeleine.edu

Confirmation—Fr. Mike ext. 111

COUNCILS & CONTACTS

Pastoral Council—Meg Scharle

Finance Council—Jim Jones 503-284-3301

Buildings & Grounds—Erin Couch 503-281-9575

School Advisory—Tim Resch 503-984-46072

Facility Requests—themadeleine.edu/facilities

Maintenance Requests—John Garrow
jgarrow@themadeleine.edu ext. 118

St Vincent de Paul (Food, utility, rent)

RECYCLING PROGRAMS AT THE MADELEINE

Marked collection bins in the breezeway facing 23rd Ave.

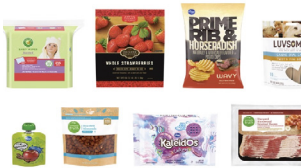
The Madeleine's Laudato Si' Circle and Care for Creation Ministry have joined with U. S. based recycler, Terracycle, to offer our parish, school, and community opportunities to responsibly recycle specific items (primarily plastics) not generally handled at curbside. Terracycle has added more manufacturers to its program, and in turn, we have expanded our recycling offerings. Here is a current listing of what we are collecting. Please keep this in mind:

- ▶ Do not include garbage or items not specifically mentioned in the descriptions.
- ▶ Empty containers of contents. No need to wash first; ensure packaging is dry.



KROGER FLEXIBLE PLASTICS

All Kroger brand flexible plastic packaging can now be accepted. Includes Private Selection and Simple Truth brands as well.



METAL-BASED COOKWARE AND CUTLERY

All brands of metal-based cookware, bakeware and cutlery (non-stick Aluminum, Stainless Steel, Carbon Steel, Cast Iron). Please make sure items are thoroughly clean and dry.



SWIFFER REFILLS



Swiffer only brands of Sweeper™ Dry, Wet, and XL Refills, WetJet Refills™, and Duster™ Refills.

LATE JULY® SNACKS

All Late July® snack packaging as seen in these examples. Limited to Late July brand only.



ORAL CARE PRODUCTS

All brands of used or empty oral care products, including toothpaste tubes, tooth brushes, and dental floss containers.



FOOD STORAGE

All brands of well-used plastic and glass food storage containers.



GILLETTE® AND VENUS RAZORS AND RAZOR BLADES

All brands of blades and razors (systems and disposable units, and replaceable-blade cartridge units), rigid plastic packaging, and flexible plastic bag packaging.



CIGARETTE BUTTS, SANTA FE NATURAL TOBACCO COMPANY

All brands of fully extinguished cigarettes (and ashes) and tobacco products, including filters, plastic packaging, inner foil packaging, rolling paper, and loose tobacco pouches.



BIC WRITING INSTRUMENTS AND PACKAGING

All brands of empty writing instruments, glue sticks, water-color dispensers, highlighters, paint sets, and flexible packaging.



OFFSITE RECYCLING OPPORTUNITIES FOR FAMILIES

REDYPER DISPOSABLE DIAPERS

Subscription service for purchasing and recycling Redyper brand disposable diapers through Terracycle

LOOP

Offers zero-waste packaging of everyday essentials (beauty, health and personal care, grocery, and household essentials) from leading brands (including Haagen-Dazs!) Details at www.loopstore.com



Details on all programs at www.themadeleine.edu/terracycle

ANNUAL SOCK DRIVE UNDERWAY

Please join us in helping our neighbors in need this winter. The Madeleine Knights of Columbus and The Madeleine School are sponsoring the annual Sock Drive.

Blue barrels are in the church vestibule and the school entrance. Prefer to drop them off in person? On December 3, you can do so in the Parish Hall turnaround from 10:00 am–1:00 pm. NOTE: Please look for socks with a wool blend and no cotton.

Socks will be donated to those in need through Transition Projects and Saint André Bessette.

Don't have time to go sock shopping? Or would you prefer we take your cash and purchase wool socks in bulk? Just scan the QR code at right, or drop off a donation at the Parish Office.



SLEEP IN HEAVENLY PEACE BEDDING DRIVE

Through Christmas, Sleep in Heavenly Peace is accepting bedding donations at The Madeleine. Please look for the blue bins located in the vestibule.

Sleep in Heavenly Peace has provided 300 beds to children in the Portland area. Many of those beds were built and delivered by Madeleine parishioners and provided with sheets, blankets and pillows from Madeleine bedding drives. Special shout out to the Laskowski family, who have been at every one of our bunk bed builds



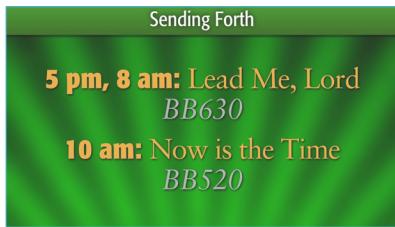
and many of our deliveries. We love having you on our team!

Through the generosity of past bedding drives, we have a good supply of sheet sets, but could always use more twin size blankets and comforters, mattress protectors (no extra long please) and pillows. All donations must be new and still in the original packaging.

Thank you to The Madeleine Community for the continued support!

AUDIO/VIDEO MINISTRY NEEDS YOUR HELP!

As we begin to return to Mass each weekend, we are looking to include some of the “extras” we’ve had in the past... including the weekly use of our video screens for Breaking Bread references, videos and song lyrics. But we need help running them! This is a very important ministry, as the screens help to enhance our worship experience.



Presentations run on a Macintosh laptop using software similar to Powerpoint—you simply run the presentations by advancing from screen to screen. The presentations are already built...

you don't need to edit or create them. Just run them. It's easy! Full training is included. Interested? Please contact Rich Hammons, rhammons@themadeleine.edu



Upcoming concerts at The Madeleine

Performances in The Old Madeleine Church unless noted

- ▶ **Dec. 11, 3:00 pm** • Main Church • Bravo! Northwest Chorale, Orchestra, guest jazz artists • A Northwest Christmas II • bravoconcerts.com
- ▶ **Dec. 14, 7:00 pm** • 45th Parallel Universe with six brilliant cellists • Cello Nutcracker • www.45thparallelpdx.org

RMD for 2022?

If you are at least 70½ years of age and are required to take a minimum distribution from your IRA, you can donate part or all of that distribution to The Madeleine, tax free! For information, contact parish Business Manager, John Garrow, 503-281-5777 or jgarrow@themadeleine.edu

THE MADELEINE GIVING TREE SUPPORTS TWO ORGANIZATIONS IN 2022

Tags on trees Nov. 26-27 weekend • Parish Hall circular driveway

The tradition of The Madeleine Giving Tree is long and significant. In past years, gift tags from the Giving Tree would disappear within hours or days, leaving potential gift-givers disappointed.

This year, however, we have collaborated with two well-deserving and well-run organizations to support children and families in need. Combined between the two organizations, we have more than 200 tags being tied to our Parish Hall driveway tree this year.

▶ **Northwest Family Services Children of Incarcerated Parents**—These children face countless barriers including abuse, neglect, homelessness and food insecurity, as well as having one or both parents incarcerated.

▶ **Catholic Charities Refugee Services**—Newly arriving refugees often come to the U.S. with nothing; the Refugee Services Program works to provide essential needs. Our Giving Tree will support that with gifts for children and youth.

As we said above, more than 200 tags are on the tree this year. Please grab a tag or two and be generous—tags go up the weekend of November 26–27.



ADVENT

THREE COMPANIONS FOR OUR JOURNEY

The Season of Advent makes our journey toward Christmas more meaningful by revealing our deepest longings and greatest hopes, and teaching us to focus all our desires on Jesus Christ. Advent celebrates three dimensions of Christ's coming—first into the world some two thousand years ago, second into our hearts right now, and finally in his coming at the end of time.

As you journey through Advent, you will begin to understand Jesus more fully and recognize that his birth began our redemption and that his return in glory will complete it. Advent draws together the joy of his arrival as a helpless babe with the hope of his return when evil will finally be eradicated from our world.

Advent also presents us with **three companions** for our journey who speak to us about matters of the heart—about longing, fulfillment and hope.

Isaiah

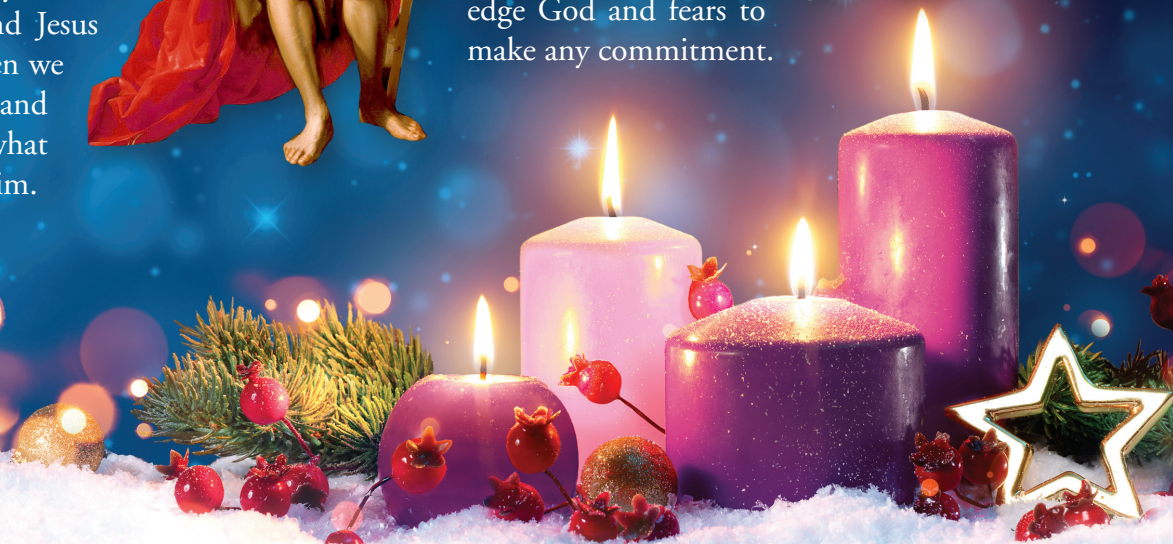
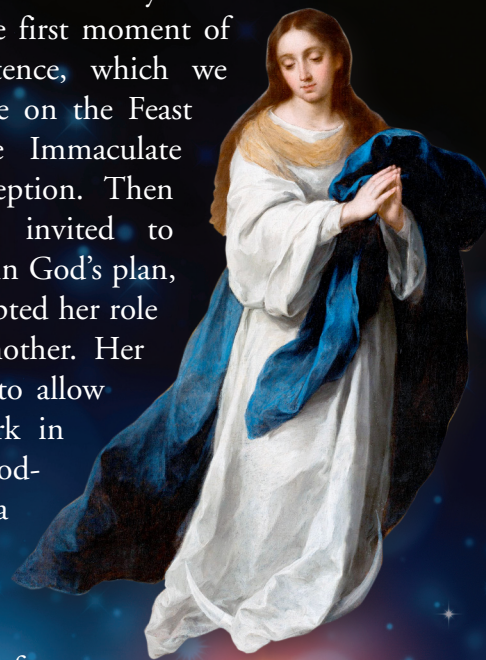
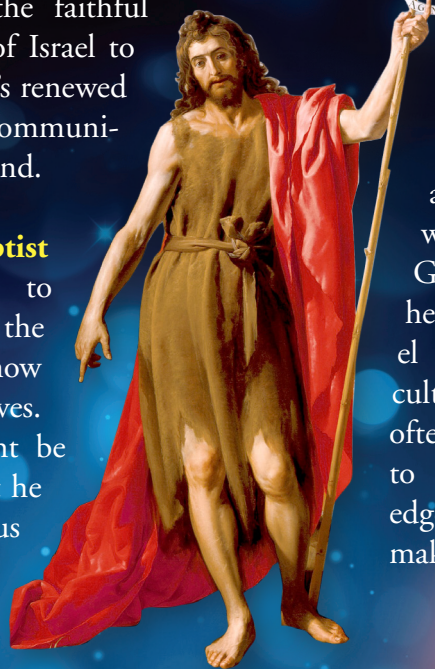
The great prophet foretold the coming of the promised Messiah and his kingdom. Isaiah's words are remembered especially during Advent because of his confident hope that God would restore the faithful remnant of Israel to live as God's renewed covenant community in their land.

John the Baptist

John announced to the people that Jesus, the Messiah, had finally come and now was the time to change their lives. While some thought John might be the Messiah, he knew clearly that he was only the messenger and Jesus was the promised one. When we look carefully at our lives and those of others, we learn what we must change to follow him.

Mary

Mary was transformed by God's grace from the first moment of her existence, which we celebrate on the Feast of the Immaculate Conception. Then when invited to share in God's plan, Mary accepted her role as Jesus' mother. Her willingness to allow God to work in her life is a model for us in a culture that often refuses to acknowledge God and fears to make any commitment.



Origins of Advent

Advent began sometime after the 4th century as a time of preparation for Epiphany—not in anticipation of Christmas. Epiphany celebrates the manifestation of Christ by remembering the visit of the Magi and the baptism of Jesus. At this time new Christians were baptized and received into the faith, and so the early Church instituted a 40-day period of fasting and repentance.

Later, in the 6th century, Pope St. Gregory the Great was the first to associate this season of Advent with the coming of Christ. Originally it was not the coming of the Christ-child that was anticipated, but rather, the second coming of Christ.

By the Middle Ages the Church had extended the celebration of Advent to the familiar format we know today. The early weeks are rich with the prophecies of Isaiah, reminding us to wait and prepare for the coming Messiah. Later, the pace quickens and we focus more directly on the events leading up to Jesus' birth.



The Three Arrivals of Christ

Jesus Comes in Human History

Our celebration of Christmas focuses on the birth of Jesus in Bethlehem. The Christmas crèche at home or in the church, Christmas pageants and liturgies all help us recall the moment Jesus was born as a human being to live his destiny as the Son of God and our redeemer.

Jesus Comes in Our Hearts

Alive and among us through the Holy Spirit, Jesus continually reaches out to us. Advent renews our desire for the daily coming of Jesus as we recall the story of our salvation and look forward to the coming of the kingdom. We “wait in joyful hope,” as the eucharistic liturgy says, for the coming of that kingdom.

Jesus Comes in Glory

The haunting melody and refrains of *O Come, O Come, Emmanuel* serve to remind us of our longing for the completion of Christ's reign at the end of time. This season gives special meaning to the phrase from the Lord's Prayer, “thy kingdom come.”

ADVENT F • A • Q

What is the origin of the Advent Wreath?

The origin dates to pre-Christian Germany and Scandinavia where the people gathered to celebrate the return of the sun after the winter solstice. For us, the lighting of the Advent candles represents the promise of the coming of Jesus, the light of the world.

Why is the rose-colored candle lit on the third Sunday of Advent?

The third Sunday of Advent is known as *Gaudete Sunday* because in Latin, the first words of the opening antiphon for that day's Mass are *Gaudete in Domino semper* (Rejoice in the Lord always) from Philippians 4:4-5. On this Sunday a rose-colored candle is lit as a reminder that we are called to rejoice.

Was St. Nicholas Real?

Yes, St. Nicholas (270-343) was the Bishop of Myra (now Demre in southwest Turkey). He was imprisoned during Emperor Diocletian's persecution (303-5) and attended the first ecumenical council at Nicaea (325). Famous for his pastoral care, the many legendary stories of his charitable deeds became the basis for the figure of Santa Claus.

What is a Jesse Tree?

An ancient tradition revived in the mid-20th century as an Advent practice, the Jesse Tree represents the family of Jesse, father of King David. Each day of Advent a home-made ornament is added to the Jesse Tree, a small tree made of evergreen branches. These symbolic ornaments each represent a prophecy foretelling of Christ.



MASS READINGS FOR ADVENT 2022

1st Sunday	Isaiah 2:1-5; Psalm 122:1-9; Romans 13:11-14; Matthew 24:37-44
2nd Sunday	Isaiah 11:1-10; Psalm 72:1-2, 7-8, 12-13, 17; Romans 15:4-9; Matthew 3:1-12
3rd Sunday	Isaiah 35:1-6, 10; Psalm 146:6-10; James 5:7-10; Matthew 11:2-11
4th Sunday	Isaiah 7:10-14; Psalm 24:1-6; Romans 1:1-7; Matthew 1:18-24
Christmas Day	Isaiah 52:7-10; Psalm 98:1-6; Hebrews 1:1-6; John 1:1-18




Timmco
INSURANCE

Brian Timm
Susan Ames | Derek Ames

1615 NE Broadway | 503-288-8818
www.timmco.com

AUTO | HOME | BUSINESS | LIFE

TIM WALTERS 
Principal Broker

The most trusted name in Real Estate!

Committed to the NE Portland

Neighborhoods since 1991



503-545-1880 | TimWaltersRealtor@Gmail.com | TimWaltersPc.com

Mark McGinnis

Parishioner, Parent
Mortgage Advisor



NMLS 98586
971-300-0484
mark.mcginis@spmc.com
"It's about service!"




Soccer Camp
Bernie Fagan
EST. 1983

T.C. O'LEARY'S
a little irish
PUB

2926 NE Alberta Street
A little taste of Ireland!



Parishioners Tom, Siobhan & Aine O'Leary

JOHN M. WYNN
ATTORNEY AT LAW
McGill, Kapranos & Wynn
Parishioner



Hollywood Professional Center, 3939 NE Hancock St., Ste. 305
jmwpxd@qwestoffice.net • 503-287-7333


LANCE MARRS

PRINCIPAL BROKER
503.701.5323
PORTLAND MODERN REAL ESTATE
LICENSED IN OREGON
PORTLANDMODERN.COM



PAUL MARRS

MORTGAGE LOAN OFFICER NMLS ID #5212
O:503.781.2114 B:503.994.8559
PMARRS@CANOPYMORTGAGE.COM
CANOPYMORTGAGE.COM/PAULMARRS
CANOPY MORTGAGE



Beaverton Branch Canopy Mortgage, LLC 12655 SW Center Street Beaverton OR 97005 NMLS ID #1359687

JOSÉ MESA AUTO WHOLESALE, LLC
"The mobile auto dealer who is always in your neighborhood."
YOUR DISCOUNT AUTO RETAILER SINCE 1992!
sales@josemesa.com 503-789-0438 www.josemesa.com
NEW•USED•BUY•SELL•LEASE•TRADE•CONSIGN•BROKER•APPRAISE



Dr. Phil Doleac, PC
Orthodontics for all ages
www.magic-smiles.com

Beaverton Portland Scappoose
503.644.7009 503.255.1694 503.543.4488



Sweetly Aimee, LLC
Custom Wedding and All-Occasion Cakes and Desserts

Aimee Holzschuh
Parishioner & Parent
503.998.7368
www.SweetlyAimee.com



Beaumont Vision:
providing full-service eyecare for all ages, including comprehensive exams, glasses and contacts

Stop by to view our unique eyewear
Most insurances accepted

4331 NE Fremont St
Ph: 503-331-3937

JOHN W. LOBO PAINTING
Custom Interior & Exterior
Creative Finishes
503-969-3337 CCB#89027
Licensed Bonded Insured

ADVERTISE HERE!
Contact Rich Hammons,
bulletin@themadeleine.edu



Retrouvaille
A Christian Peer Ministry
A LIFELINE FOR HURTING MARRIAGES

Is your marriage tearing you and your family apart?
Weekends held every February, June & October at Mt. Angel Retreat Home
www.helpourmarriage.com
503-704-7382
Donated by Kevin & Carol McMenamin

ANNE C. STEINER
ESTATE PLANNING
ELDER LAW ATTORNEY
503.946.8361 • 1915 NE Cesar Chavez Blvd.
PARISHIONER - anne.c.steiner@gmail.com
WILLS - TRUSTS - PROBATE
GUARDIANSHIP - CONSERVATORSHIP




PAUL MYERS, Ph.D., LLC
PSYCHOTHERAPY, COUNSELING & CONSULTING SERVICES
(503) 381-6685 paulmyersphdpdx@gmail.com
www.paulmyersphdpdx.com



THEORY MORTGAGE
Beating Banks Daily

Brian DuVal
503-850-7667
NMLS 5912, NMLS 1848246



Ashley
REALTY WORKS TEAM

PARISHIONERS, NEIGHBORS, EXPERT REALTORS

Wick & Karoline Ashley
karoline@ashleyrealtyworks.com
(503) 819-4851
237 NE Broadway Suite 100

RE/MAX equity group



CITY HOME IMPROVEMENT, Inc.
Kitchens | Bathrooms | Additions
Since 1956


Please visit our showroom or call for a free in-home estimate

503-253-7591
www.cityhomeimprovementinc.com
8811 NE Sandy Blvd. Portland, OR 97220



WILLAMETTE FINANCIAL ADVISORS, LLC
PERSONALIZED ADVICE FROM TRUSTED ADVISORS

James M Jones
Financial Advisor, CFP®
Parishioner
Direct 503.284.9200
Office 503.7470306
jimj@wfinadv.com



Whole house remodels
• Kitchens • Bathrooms
• Basements • Additions
In-house architecture & design

Nathalie Roloff, Parishioner

503.245.0685
rolloffconstruction.com
4300 NE Fremont #130
CCB #140721
WA#ROLOFC1873KU
ROLOFF CONSTRUCTION