



## Calendar This Week

All Masses in person only unless noted

### SUNDAY, OCTOBER 23

▶ World Mission Sunday Collection

8:00 am: Mass—Church

10:00 am: First Penance Class—Fireside Rm

10:00 am: Mass—Church  **ALSO LIVESTREAMS**

11:15 am: Faith Formation—Fireside Rm

11:30 am: Laudato Si'—St. Catherine Room

### MONDAY, OCTOBER 24

6:30 pm: FA Meeting—Fireside Rm

### TUESDAY, OCTOBER 25

▶ Nourish our Neighbors Grade 3

8:00 am: Mass—Church

9:00 am: Adoration—Church

10:00 am: Silver Exchange—Rectory Dining

11:00 am: Choral Invitational Meeting

### WEDNESDAY, OCTOBER 26

▶ School Out 12:00 pm: Early Dismissal-Conferences

8:00 am: Mass—Church

5:30 pm: Chimes Rehearsal—Church

7:00 pm: Madeleine Choir—Church

### THURSDAY, OCTOBER 27

▶ No School-Conferences

▶ NOTE: No 2:00 pm Mass today

8:00 am: Mass—Church

### FRIDAY, OCTOBER 28

▶ No School-Conferences

8:00 am: Mass—Church

### SATURDAY, OCTOBER 29

5:00 pm: Mass—Church

### SUNDAY, OCTOBER 30

8:00 am: Mass—Church

10:00 am: Mass—Church  **ALSO LIVESTREAMS**

11:00 am: Safety and Security—Fireside Rm

### SAVE THE DATE

▶ **The Madeleine Auction:** November 5  
[themadeleine.edu/auction](http://themadeleine.edu/auction)

▶ **The Madeleine Marketplace:** December 8  
[themadeleine.edu/marketplace](http://themadeleine.edu/marketplace)

▶ **Mardi Gras:** February 21, 2023

## PARISH LIFE

### PRAYER VIGIL FOR PERSONAL, NATIONAL, AND GLOBAL PEACE

Tuesday, November 8, 2022 • Main Church

We are all aware of the many crises in our world which can cause anxiety within us. We invite you to join us in prayer for peace within our own hearts, our nation and our world.

We will have exposition of the Blessed Sacrament from 8:30 am until 7:00 pm. Deacon Mike, Therese Fenzl, or Marilyn Robb will lead a brief communal prayer

(about 10 minutes) at 8:30 am, 10:30 am, 12:30 pm, 1:30 pm, 2:30 pm, 4:30 pm, 5:00 pm, 5:30 pm, 6:00 pm, and 6:30 pm.

You (adults and children) are invited to join us at any of these times or at any time that works for you. Let us join as a parish community to support one another in our belief that God is present to us always.

### PAPER SHREDDING EVENT AT THE MADELEINE

October 29, 9 am–1 pm • Parish Hall Driveway

Dig out your old, unneeded papers and bring them to The Madeleine on October 29 to be securely shredded! Rather than simply tossing your old sensitive documents...tax returns, bank statements, utility bills, etc...into the recycling bin, security experts suggest shredding them so they cannot be acquired for nefarious uses. But not everyone has a shredder at home...so we will have American Shredding on site in the Parish Hall driveway.



Here are some details:

▶ Everyone can bring on “Banker’s box” size box for free.

▶ You say you have more boxes full of papers? We will accept them for a small donation to offset the cost of the service.

▶ Paper clips, staples and binder clips are OK to shred but NO PLASTIC!

We look forward to seeing you on Saturday, October 29!

### SAFETY AND SECURITY SEMINAR SERIES

Sunday, October 30 after 10:00 am Mass • Fireside Room

The Madeleine Safety & Security Committee is hosting a seminar for all interested parishioners in the Fireside Room on Sunday, October 30 after the 10:00 am Mass. The first of a series planned on a semi-annual basis, this seminar offers trainings and resources that will assist parishioners in furthering the safety and security of The Madeleine Community.

This session will include a short training on the use of an automated external defibrillator (AED), another on BeAware, an introduction to situational awareness, as well as introducing new safety resources available online and in-person. It’s also an opportunity to meet the members of the safety committee and get a better understanding of how they serve The Madeleine.

### THINKING OF BECOMING CATHOLIC?

RCIA, the Rite of Christian Initiation of Adults, is the process through which the Catholic Church welcomes newcomers. Over the next few weeks, we continue with a time of inquiry. Consider joining us for prayer and guided discussion on living our Catholic faith.

▶ Sunday, October 23, 11:15 am (following Mass) to 1 pm in the Fireside Room

▶ No gathering on Sunday, October 30

Contact Christi Bohmbach at [rcia@the-madeleine.edu](mailto:rcia@the-madeleine.edu) if you have questions.



**In this Sunday’s Gospel, the tax collector’s prayer allows God to be God** and so allows God to pour mercy into his heart. When we pray and give alms to the poor, we allow God’s mercy to be poured into their hearts. In the month of October, through your gifts to the Society of St. Vincent de Paul was able to bring God’s love and mercy to many families, providing help with food, utility and rent bills. Thank you.

—Mary Clare O’Brien, 503-309-7639



## Green Tips for a More Sustainable Lifestyle

In our disposable society, we have practically forgotten the usefulness of cleaning cloths. Ask a child to clean a spill with something other than a paper towel and s/he may tell you that it can't be done. Not only are trees cut down to manufacture paper towels, but the paper towels also generate waste that accumulates at the dump.

Why not turn your old sheets, towels and material into reusable cloths? Not only are you doing something good for the environment, you'll also save on buying paper towels. Proof that being ecological is also economical.

## PARISH LIFE

### WORLD MISSION SUNDAY COLLECTION OCTOBER 22-23

This weekend we will celebrate World Mission Sunday. Pope Francis invites the entire Church to support mission dioceses in Africa, Asia, the Pacific Islands, and parts of Latin America and Europe, where priests, religious and lay leaders serve the world's most vulnerable communities. Please keep the Pope's missions in your prayers and be generous in next week's collection for the Society for the Propagation of the Faith.

You may contribute via our secure online donation site at [www.themadeleine.edu/second-collections](http://www.themadeleine.edu/second-collections) Be sure to include "World Mission Sunday" where prompted as the organization you're donating to.

### BOOK CLUB NEWS

Would you enjoy opportunities to meet with others to share in



genial discussion/debate over a variety of very excellent books? For more information and/or to be added to our email list, please contact our MBC ministry coordinator: Gretchen Stevenson, [gypsyfrau47@yahoo.com](mailto:gypsyfrau47@yahoo.com) or 503-312-6834.

### ALL SAINTS DAY RETREAT

#### Our Lady of Peace Retreat - Beaverton

- ▶ Retreat Master: Fr. Peter Vecellio, OCD, from the Carmelite House of Studies in Mt. Angel
- ▶ Theme: "Saint for our Pandemic Times: Living St. Elizabeth of the Trinity."
- ▶ Tuesday, November 1
- ▶ Retreat from 9 a.m. - 2:30 p.m. Doors open at 8:15 a.m.
- ▶ \$40 per person; includes lunch

Register online at [www.olpretreat.org](http://www.olpretreat.org); phone the retreat house at 503-649-7127 or email [sisters@olpretreat.org](mailto:sisters@olpretreat.org). 3600 SW 170th Avenue, Beaverton.

### "THE SAINTLY SIX" FREE VIRTUAL EVENT

Do you want to learn with fellow Catholic Christians about six holy Black Catholics? Join us for a free Zoom event on Thursday, November 17 at 5:30 p.m. Pacific Time. Register today at [saintlysix.eventbrite.com](http://saintlysix.eventbrite.com). This virtual event is sponsored by the Knights of Peter Claver in the Archdiocese of Portland, Oregon. For more information, please call Alexander Roth at (630) 217-5005.

### CHRISTMAS WREATHS

Second-grade Cub Scouts are setting up a table and selling Christmas wreaths for the next two Thursdays (Oct 20th and 27th) after school, next to the playground. Funds go to their local Pack 100 to fund their adventures and service projects. Wreaths will be delivered to all buyers on Saturday December 3. Payment can be made via check or Venmo (preferred method).

### ST. RITA PARISH BAZAAR

Announces the return of our Annual Fall Festival and Bazaar! November 4 & 5, 9 am-4 pm. We have a Boutique Table, Santa's Treasures, Baked Goods, and Multiple Vendors with a variety of quality goods. Our Cafe will serve delicious food both days! For more information contact the St. Rita Parish Office: (503) 252-3403 [stritaparish@archdpdx.org](mailto:stritaparish@archdpdx.org)

“How often we send instant messages to the people we love! Let's do this with the Lord too through short prayers of aspiration so that our hearts remain connected to Him. And let's not forget to read His responses in the Gospel to receive a Word of life.”

—Pope Francis via Twitter  
@pontifex

## WEEKLY MASS TIMES

### Masses:

Tuesday, Wednesday, Friday . . . . . 8:00 am  
Thursday . . . . . No School: 8:00 am  
During School: 2:00 pm  
Saturday Vigil . . . . . 5:00 pm  
Sunday . . . . . 8:00 am, 10:00 am

▶ Livestream 10:00 am Sunday  
at [youtube.com/themadeleineparish](http://youtube.com/themadeleineparish)

**Penance** . . . . . By appointment; call Parish Office

## PARISH OFFICE

**Hours** . . . . . Monday-Friday, 10:00 am-3:00 pm

**Phone:** 503-281-5777 . . . . . **Fax:** 503-281-0673

**School Office** . . . . . 503-288-9197

## PARISH STAFF

**Rev. Mike Biewend**—Pastor  
[fathermike@themadeleine.edu](mailto:fathermike@themadeleine.edu) . . . . . ext. 111

**Deacon Mike O'Mahoney**—Permanent Deacon  
[deaconmike@themadeleine.edu](mailto:deaconmike@themadeleine.edu)

**Carol Glasgow**—School Principal  
[cglasgow@themadeleine.edu](mailto:cglasgow@themadeleine.edu) . . . . . 503-288-9197

**John Garrow**—Business Manager  
[jgarrow@themadeleine.edu](mailto:jgarrow@themadeleine.edu) . . . . . ext. 118

**My Schoning**—Assistant Business Manager  
[mhoang@themadeleine.edu](mailto:mhoang@themadeleine.edu) . . . . . ext. 118

**Darlene Maurer**—Pastoral Assistant  
[dmaurer@themadeleine.edu](mailto:dmaurer@themadeleine.edu) . . . . . ext. 125

**Theresa Fenzl**—Director of Spiritual Ministries  
[tfenzl@themadeleine.edu](mailto:tfenzl@themadeleine.edu) . . . . . ext. 116

**Maria Manzo**—Director of Music  
[mmanzo@themadeleine.edu](mailto:mmanzo@themadeleine.edu) . . . . . ext. 113

**Allison Blakemore**—Bookkeeper  
[ablakemore@themadeleine.edu](mailto:ablakemore@themadeleine.edu) . . . . . ext. 119

**Guy Allen**—Events Manager  
[gallen@themadeleine.edu](mailto:gallen@themadeleine.edu)

**Mary Prusso**—Registration  
[mprusso@themadeleine.edu](mailto:mprusso@themadeleine.edu) . . . . . ext. 112

**Julie Kupers**—Special Events  
[jkupers@themadeleine.edu](mailto:jkupers@themadeleine.edu) . . . . . 720-936-5635

**Janeen Reilly**—Parish Administrator  
[jreilly@themadeleine.edu](mailto:jreilly@themadeleine.edu) . . . . . ext. 110

**Terry Silva**—Facilities Support  
[tsilva@themadeleine.edu](mailto:tsilva@themadeleine.edu) . . . . . ext. 117

**Rich Hammons**—Director of Communications  
[rhammons@themadeleine.edu](mailto:rhammons@themadeleine.edu) . . . . . ext. 129

## SACRAMENTS

**Marriages, Funerals, Anointing of the Sick**—  
Fr. Mike . . . . . ext. 111

**Infant Baptism**—Darlene Maurer . . . . . ext. 125

**First Reconciliation, First Eucharist**—  
Rose Horton . . . . . [sac-prep@themadeleine.edu](mailto:sac-prep@themadeleine.edu)

**RCIA**—Christi Bohmbach, [rcia@themadeleine.edu](mailto:rcia@themadeleine.edu)

**Confirmation**—Fr. Mike . . . . . ext. 111

## COUNCILS & CONTACTS

**Pastoral Council**—Meg Scharle

**Finance Council**—Jim Jones . . . . . 503-284-3301

**Buildings & Grounds**—Erin Couch . . . . . 503-281-9575

**School Advisory**—Eric Robinson . . . . . 971-227-3772

**Facility Requests**—[themadeleine.edu/facilities](http://themadeleine.edu/facilities)

**Maintenance Requests**—John Garrow  
[jgarrow@themadeleine.edu](mailto:jgarrow@themadeleine.edu) . . . . . ext. 118

**St Vincent de Paul** (Food, utility, rent assistance)  
Mary Clare O'Brien . . . . . 503-309-7639

**Bulletin submissions due 5:00 pm Tuesday**

Email to [bulletin@themadeleine.edu](mailto:bulletin@themadeleine.edu)

SAVE THE DATE • ALL ARE WELCOME



# THE MADELEINE MARKETPLACE



*Holiday Bazaar & Christmas Tree Lighting*

**DECEMBER 8 2:00 – 8:00 PM**

## MADELEINE MARKETPLACE CALL FOR VENDORS

Register at [www.themadeleine.edu/marketplace](http://www.themadeleine.edu/marketplace)

Our annual Madeleine Marketplace Holiday Bazaar is Thursday, December 8, 2022. We are reaching out to potential vendors with an invitation to operate a booth selling items.

The one-day Marketplace opens at 2 pm and closes at 8 pm, taking place in The Madeleine Parish Hall and Fireside Room. Hundreds of parents, kids, parishioners and community members get a kick start on their Christmas shopping, buy hostess gifts for holiday entertaining, and much more. The evening's festive atmosphere is embellished with our annual Christmas tree lighting.

Food and drink are available for purchase as well as kids crafts, gingerbread house contest, caroling and pictures with Santa.

### Vendor FAQ:

- ▶ Table fee is \$60; Registration deadline November 28
- ▶ The event ends at 8 pm.
- ▶ Vendors can begin setup at 1:00 pm on December 8.
- ▶ This a family friendly event. Children are encouraged.
- ▶ Tables will be assigned.
- ▶ We have 8-foot rectangular tables & 60" round tables available. Please be sure to specify your preference when you register for the event.
- ▶ Vendors take payments at their own risk.
- ▶ Food and drink will be available for purchase.
- ▶ The Marketplace organizers retain the right to refuse vendors if the products are not appropriate. (Please no cannabis products or any images or objects that are not child friendly.) If it is determined that your products are not appropriate for this event, your table fee will be refunded.

Questions? Contact Julie Kupers at [jkupers@themadeleine.edu](mailto:jkupers@themadeleine.edu), or leave a message at 503-281-5777.

## 45TH PARALLEL UNIVERSE

Join us for an incredible season of chamber music  
in historic Irvington at the The Old Madeleine Church!



Join us for

## ALL-AMERICAN WOMEN

**Arcturus Quintet**

November 3 | 7:00 pm | The Old Madeleine Church  
Doors open at 6:30 pm

The Arcturus Quintet shines a spotlight on the music of four women who are pillars of American musical culture.

**Amanda Harberg** | **Valerie Coleman** | **Amy Beach** | **Vivian Fine**

Learn more at [45thparallelpdx.org](http://45thparallelpdx.org)



# In Memoriam

THE MADELEINE FAMILY REMEMBERS

## SALLY MCKEON

A Funeral Mass was held for longtime parishioner Sally McKeon on Friday, October 21, at The Madeleine.

On September 22, after visits from family, friends, and Fr. Luis Gonzalez from St Anne's Catholic Church near her care home, Sally Florence McKeon, 88, of Portland, Oregon, died peacefully with her daughter and grandson at her bedside discussing art.

Born in Portland on April 26, 1934 to Englishman and Opera Baritone Jack Houston and Oregonian Esther Griffeth, Sally's childhood was full of family, music, religion and an assortment of colorful personalities. After graduating from Cleveland High School in 1952 she studied fine art at The Museum Art School and Portland State College. After moving to Southern California in 1965 Sally received her BFA at Long Beach State College and later an MFA from Portland State University in Special Education. Sally met James McKeon while both were attending Long Beach State; the two were married in 1967. Jim, Sally and their 3 children moved to Portland in 1972 to support her mother's business.

Sally was a devoted Christian for her entire life. Born a Methodist, she converted to Catholicism as an adult and was an engaged member of the congregation at St. Mary Magdalene for over 40 years. In addition to playing the piano at Mass, participating in charitable outreach, and scripture study, Sally's desire to be closer to Christ inspired her to explore contemplative prayer, Vipassana, and Zazen.

Sally dedicated her life to creating art in her home studio, promoting special education, and spreading joy through music. She was instrumental in creating the first special education resource room for Portland Public Schools, was an accompanist for a ballet company and area churches, and taught piano to many students. Her greatest pride was her role as a mother, grandmother, great-grandmother and aunt.

Sally is survived by her children Patti Witherite (Phil), Mark Witherite (Alice) and James McKeon (Elizabeth),

IN LOVING MEMORY



Sally Florence McKeon

04 . 26 . 1934 - 09 . 22 . 2022

grandchildren: Steve Elliott (Monica), Allison Pennington (Brett), Brittany Fasulo (Geoff) and great grandchildren: Lillian, Montana, Maximus, Kai, Killian and Winter. Husband James McKeon died in 2019.

A heartfelt thanks to all at The Cottages Senior Living Memory Care for their understanding, caring and support and to Heart 2 Heart Hospice for quickly putting into action all the wonderful things hospice does for the dying and their family. The patience and understanding offered to her 3 adult children was an amazing gift.

The family requests gifts in Sally's name to the Alzheimer's Association, [http://act.alz.org/goto/Sally\\_McKeon](http://act.alz.org/goto/Sally_McKeon)

*Please pray for Sally, her family, and all the faithfully departed from The Madeleine*



## RECYCLING PROGRAMS AT THE MADELEINE

Marked collection bins in the breezeway facing 23rd Ave.

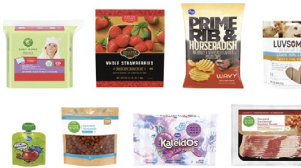
The Madeleine's Laudato Si' Circle and Care for Creation Ministry have joined with U. S. based recycler, Terracycle, to offer our parish, school, and community opportunities to responsibly recycle specific items (primarily plastics) not generally handled at curbside. Terracycle has added more manufacturers to its program, and in turn, we have expanded our recycling offerings. Here is a current listing of what we are collecting. Please keep this in mind:

- ▶ Do not include garbage or items not specifically mentioned in the descriptions.
- ▶ Empty containers of contents. No need to wash first; ensure packaging is dry.



### KROGER FLEXIBLE PLASTICS

All Kroger brand flexible plastic packaging can now be accepted. Includes Private Selection and Simple Truth brands as well.



### METAL-BASED COOKWARE AND CUTLERY

All brands of metal-based cookware, bakeware, and cutlery (non-stick Aluminum, Stainless Steel, Carbon Steel, Cast Iron). Please make sure items are thoroughly clean and dry.



### SWIFFER REFILLS



Swiffer only brands of Sweeper™ Dry, Wet, and XL Refills, WetJet Refills™, and Duster™ Refills.

### LATE JULY® SNACKS

All Late July® snack packaging as seen in these examples. Limited to Late July brand only.



### ORAL CARE PRODUCTS

All brands of used or empty oral care products, including toothpaste tubes, tooth brushes, and dental floss containers.



### FOOD STORAGE

All brands of well-used plastic and glass food storage containers.



### GILLETTE® AND VENUS RAZORS AND RAZOR BLADES

All brands of blades and razors (systems and disposable units, and replaceable-blade cartridge units), rigid plastic packaging, and flexible plastic bag packaging.



### CIGARETTE BUTTS, SANTA FE NATURAL TOBACCO COMPANY

All brands of fully extinguished cigarettes (and ashes) and tobacco products, including filters, plastic packaging, inner foil packaging, rolling paper, and loose tobacco pouches.



### BIC WRITING INSTRUMENTS AND PACKAGING

All brands of empty writing instruments, glue sticks, water-color dispensers, highlighters, paint sets, and flexible packaging.



### OFFSITE RECYCLING OPPORTUNITIES FOR FAMILIES

#### REDYPER DISPOSABLE DIAPERS

Subscription service for purchasing and recycling Redyper brand disposable diapers through Terracycle

#### LOOP

Offers zero-waste packaging of everyday essentials (beauty, health and personal care, grocery, and household essentials) from leading brands (including Haagen-Dazs!) Details at [www.loopstore.com](http://www.loopstore.com)

Details on all programs at  
[www.themadeleine.edu/terracycle](http://www.themadeleine.edu/terracycle)



# WELCOME ABOARD

*The Madeleine Auction* • 11/5/22

## SUPPORT THE MADELEINE AUCTION — PURCHASE RAFFLE TICKETS ONLINE!

Buying raffle tickets has always been a great way to support our parish school’s auction, which goes to the general fund to help keep Catholic education affordable for families. But now we’re pleased to offer them online, so ANYONE can buy them (well, anyone who’s in the state of Oregon, that is). So visit [www.themadeleine.edu/raffle](http://www.themadeleine.edu/raffle) and buy your raffle tickets today! Just \$10 each!

### RAFFLE PRIZES • \$10 PER TICKET

**GRAND PRIZE:** Option of \$4000 Travel Voucher  
or \$4000 Catholic School Tuition  
Voucher (Portland-area K-12)

**SECOND PRIZE:** \$750 Travel Voucher

**THIRD PRIZE:** \$250 Powell’s Gift Card

Need not be present to win. 4,500 tickets available. Drawing to be held at The Madeleine School, 3240 NE 23<sup>rd</sup> Avenue, Portland, OR 97212. Ticket drawn 11/5/2022 at approximately 8:30 pm. Cost \$10 per ticket. Winner responsible for applicable taxes. Restrictions may apply. Not redeemable for cash. Must be in Oregon to purchase online.



**Buy tickets online: [www.themadeleine.edu/raffle](http://www.themadeleine.edu/raffle)**




Bulletin Advertising: contact Rich Hammons • bulletin@themadeleine.edu • 503--281-5777

**Timmco**  
INSURANCE

Brian Timm  
Susan Ames | Derek Ames

1615 NE Broadway | 503-288-8818  
www.timmco.com

AUTO | HOME | BUSINESS | LIFE

**TIM WALTERS**   
Principal Broker

The most trusted name in Real Estate!

Committed to the NE Portland

Neighborhoods since 1991



503-545-1880 | TimWaltersRealtor@Gmail.com | TimWaltersPc.com

**Mark McGinnis**

Parishioner, Parent  
Mortgage Advisor



NMLS 98586  
971-300-0484  
mark.mcginis@spmc.com  
"It's about service!"

 **Sierra Pacific**  
MORTGAGE

**SOCCER CAMP**

*Bernie Fagan*

EST. 1983

**T.C. O'LEARY'S**  
a little irish  
PUB

2926 NE Alberta Street  
A little taste of Ireland!



Parishioners Tom, Siobhan & Aine O'Leary

**JOHN M. WYNN**  
ATTORNEY AT LAW  
McGill, Kapranos & Wynn  
Parishioner

Hollywood Professional Center, 3939 NE Hancock St., Ste. 305  
jmwpxd@qwestoffice.net • 503-287-7333



**LANCE MARRS**


PRINCIPAL BROKER  
503.701.5323  
PORTLAND MODERN REAL ESTATE  
LICENSED IN OREGON  
PORTLANDMODERN.COM



**PAUL MARRS**

MORTGAGE LOAN OFFICER NMLS ID #5212  
O:503.781.2114 B:503.994.8559  
PMARRS@CANOPYMORTGAGE.COM  
CANOPYMORTGAGE.COM/PAULMARRS  
CANOPY MORTGAGE

Beaverton Branch Canopy Mortgage, LLC 12655 SW Center Street Beaverton OR 97005 NMLS ID #1359687



**JOSÉ MESA AUTO WHOLESALE, LLC**  
"The mobile auto dealer who is always in your neighborhood."  
**YOUR DISCOUNT AUTO RETAILER SINCE 1992!**  
sales@josemesa.com 503-789-0438 www.josemesa.com  
**NEW•USED•BUY•SELL•LEASE•TRADE•CONSIGN•BROKER•APPRAISE**

 **Dr. Phil Doleac, PC**  
Orthodontics for all ages  
www.magic-smiles.com

**Beaverton Portland Scappoose**  
503.644.7009 503.255.1694 503.543.4488

 **Sweetly Aimee, LLC**  
Custom Wedding and All-Occasion Cakes and Desserts

Aimee Holzschuh  
Parishioner & Parent  
503.998.7368  
www.SweetlyAimee.com

  
Dr. John R. Lewis

**Beaumont Vision:**  
providing full-service eyecare for all ages, including comprehensive exams, glasses and contacts

Stop by to view our unique eyewear  
Most insurances accepted

4331 NE Fremont St  
**Ph: 503-331-3937**

**JOHN W. LOBO PAINTING**

Custom Interior & Exterior  
Creative Finishes  
503-969-3337 CCB#89027  
Licensed Bonded Insured

**ADVERTISE HERE!**  
Contact Rich Hammons,  
bulletin@themadeleine.edu


 **Retrouvaille**  
A Christian Peer Ministry  
A LIFELINE FOR HURTING MARRIAGES

Is your marriage tearing you and your family apart?  
Weekends held every February, June & October at Mt. Angel Retreat Home  
www.helpourmarriage.com  
**503-704-7382**  
Donated by Kevin & Carol McMenamin

**ANNE C. STEINER**  
ESTATE PLANNING  
ELDER LAW ATTORNEY  
503.946.8361 • 1915 NE Cesar Chavez Blvd.  
PARISHIONER - anne.c.steiner@gmail.com  
WILLS - TRUSTS - PROBATE  
GUARDIANSHIP - CONSERVATORSHIP


 **PAUL MYERS, Ph.D., LLC**  
PSYCHOTHERAPY, COUNSELING & CONSULTING SERVICES


(503) 381-6685 paulmyersphdpdx@gmail.com  
www.paulmyersphdpdx.com

 **THEORY**  
MORTGAGE

Beating Banks Daily

Brian DuVal  
503-850-7667

 NMLS 5912, NMLS 1848246



**Ashley**  
REALTY WORKS TEAM

PARISHIONERS, NEIGHBORS, EXPERT REALTORS

**Wick & Karoline Ashley**  
karoline@ashleyrealtyworks.com  
(503) 819-4851  
237 NE Broadway Suite 100

**RE/MAX**  
equity group

 **CITY HOME IMPROVEMENT, Inc.**

Kitchens | Bathrooms | Additions  
*Since 1956*

Please visit our showroom or call for a free in-home estimate

**503-253-7591**

www.cityhomeimprovementinc.com  
8811 NE Sandy Blvd. Portland, OR 97220

 **WILLAMETTE**  
FINANCIAL ADVISORS, LLC  
PERSONALIZED ADVICE FROM TRUSTED ADVISORS

**James M Jones**

Financial Advisor, CFP®  
Parishioner  
Direct 503.284.9200  
Office 503.7470306  
jimj@wfinadv.com




Whole house remodels  
• Kitchens • Bathrooms  
• Basements • Additions  
In-house architecture & design

Nathalie Roloff, Parishioner

**503.245.0685**  
rolloffconstruction.com

4300 NE Fremont #130

CCB #140721  
WA#ROLOFC1873KU

 **ROLOFF**  
CONSTRUCTION