

THIS WEEK AT THE MADELEINE

Furthering the Reign of God, Where All Are Welcome • October 15–16, 2022

REMEMBERING OUR BELOVED DEAD

Please bring photos of deceased loved ones

The month of November is traditionally the time in the Catholic Church when we remember those who have passed, both in the previous year and before.

Photos or Memorial Cards

Please bring photos or memorial cards of your deceased family members and friends to place on the Table of Remembrance. Drop them off at the Parish Office, or bring them with you when you attend Mass.

Please make sure all photos are clearly marked on the back with name and phone number so they can be returned.

Remembrance Envelopes

In the back of the church, you'll find envelopes for remembering people dear to you who have passed away. Please print legibly the names of the deceased whom you would like to be remembered during November.



ALL SOULS SERVICE OF LIGHT

November 2, 6:30 pm

Our beautiful "Service of Light" is an opportunity to reflect and pray for deceased loved ones. Join us for a contemplative service of music and scripture as we come together in prayer and remembrance. Service will be held in the Main Church.

Those attending are encouraged to bring a picture of their deceased for our Table of Remembrance.

Twenty-Ninth Sunday in Ordinary Time

"Hang in there," we say. Today's readings remind us that the call to be persistent in prayer isn't new. Israel needed to hear it, and the disciples were told by Jesus to "pray always." It helps to know that we don't need endless harangues, sophisticated words or lofty arguments. The God of mercy does hear us. The challenge is to be open to God's answer.

October is Respect Life Month. Please pray for the protection of all life from conception to natural death.

PRAY FOR OUR FAITHFULLY DEPARTED

- ▶ Betty Couch—Funeral, Saturday, October 22
- ▶ J.C. Kizak—Funeral, Thursday, October 19
- ▶ Sally McKeon—Funeral, Friday, October 19
- ▶ Shirley Hughey-Smith
- ▶ Lisa Nice
- ▶ Robert Moriarty
- ▶ Thomas Meixner

PRAYER REQUESTS

For those who are ill, or in need of our prayers

- ▶ Mason Lugar
- ▶ Bill Stack
- ▶ Minh Ha Nguyen
- ▶ Dolores Seybold
- ▶ Kathy Gaitan
- ▶ Chadd Garvens
- ▶ Debbie Barsotti
- ▶ Raymond P. Meixner

WORSHIP & PRAYER

- 10/18, Tues Raymond P. Meixner
- 10/19, Weds Shirley Hughey-Smith †
- 10/20, Thurs Matthew Gambee †
- 10/21, Fri Kathy Gaitan
- 10/22, Sat Betty Couch †
- 10/23, Sun. 8:00 am . . . The Madeleine Community
- 10:00 am Sally McKeon †

SAVE THE DATE • ALL ARE WELCOME



THE MADELEINE MARKETPLACE



Holiday Bazaar & Christmas Tree Lighting

DECEMBER 8 2:00–8:00 PM

MORE INFO & VENDOR INFO: [CLICK HERE](#)

Calendar This Week

All Masses in person only unless noted

SUNDAY, OCTOBER 16

8:00 am: Mass—Church

8:45 am: RCIA—St. Catherine Room

10:00 am: Family Mass—Church

 **ALSO LIVESTREAMS**

10:00 am: First Penance Class—Fireside Rm

11:15 am: Family Gathering—Main Church Vestibule

2:00 pm: Cappella Romana Pre-concert Talk—Church

3:00 pm: Cappella Romana “Heaven and Earth” Concert—Church

MONDAY, OCTOBER 17

6:30 pm: FA Meeting—Fireside Rm

TUESDAY, OCTOBER 18

► Nourish our Neighbors Grade 4

8:00 am: Mass—Church

9:00 am: Adoration—Church

6:30 pm: Madeleine Book Club—Fireside Rm

WEDNESDAY, OCTOBER 19

8:00 am: Mass—Church

10:00 am: J.C. Kizak Funeral Mass—Church

2:45 pm: Children’s Choir Rehearsal

5:30 pm: Chimes Rehearsal

7:00 pm: Madeleine Choir

THURSDAY, OCTOBER 20

10:00 am: Madeleine Book Club—Fireside Rm

2:00 pm: School Mass

6:30 pm: SAC—School Library

FRIDAY, OCTOBER 21

8:00 am: Mass—Church

9:30 am: Rosary for Sally McKeon—Church

10:00 am: Sally McKeon Funeral Mass—Church
Reception follows in Fireside Room

SATURDAY, OCTOBER 22

► World Mission Sunday Collection

10:30 am: Rosary for Betty Couch—Church

11:00 am: Betty Couch Funeral—Church
Reception follows in The Old Madeleine Church

5:00 pm: Mass

SUNDAY, OCTOBER 23

► World Mission Sunday Collection

8:00 am: Mass—Church

10:00 am: First Penance Class—Fireside Rm

10:00 am: Mass—Church  **ALSO LIVESTREAMS**

11:15 am: Faith Formation—Fireside Rm

11:30 am: Laudato Si’—St. Catherine Room

Green Tips for a More Sustainable Lifestyle

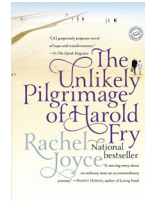
Have you been raking leaves and enjoying the fresh air? Now it’s time to get rid of your leaves ecologically. You have several choices:

- Add them to your compost, since they are rich in carbon.
- Use them as mulch to protect your plants and the foot of trees for the winter.
- Run over them with your lawn mower to shred them and enrich the soil.
- Some municipalities will pick them up.

PARISH LIFE

BOOK CLUB NEWS

Do you love to read? Would you enjoy opportunities to meet with other parishioners and friends to share in genial discussion/debate over the contents of some very excellent books? If so, you are most cordially invited to join our group.



We will be discussing *The Unlikely Pilgrimage of Harold Fry*, by Rachel Joyce the evening of Oct 18 and the morning of Oct. 20. For further information or to be added to our email list, please contact our MBC coordinator: Gretchen Stevenson, gypsyfrau47@yahoo.com or 503-312-6834.

THINKING OF BECOMING CATHOLIC?

RCIA, the Rite of Christian Initiation of Adults, is the process through which the Catholic Church welcomes newcomers. Over the next few weeks, we continue with a time of inquiry. Consider joining us for prayer and guided discussion on living our Catholic faith.

- Sunday, October 16, 8:45 am in the St. Catherine Room
- Sunday, October 23, 11:15 am (following Mass) to 1 pm in the Fireside Room
- No gathering on Sunday, October 30
Contact Christi Bohmbach at rcia@the-madeleine.edu if you have questions.

ST. RITA PARISH

Announces the return of our Annual Fall Festival and Bazaar!! November 4th & 5th, 2022 9am–4pm. We have a Boutique Table, Santa’s Treasures, Baked Goods, and Multiple Vendors with a variety of quality goods. Our Cafe will serve delicious food both days! For more information contact the St. Rita Parish Office: (503)252-3403 stritaparish@archdpdx.org

CAREGIVER NEEDED

One of our parishioners is looking for an in-home, overnight caregiver. See Fr. Mike for details and contact information.

WORLD MISSION SUNDAY COLLECTION OCTOBER 22-23

Next weekend we will celebrate World Mission Sunday. Pope Francis invites the entire Church to support mission dioceses in Africa, Asia, the Pacific Islands, and parts of Latin America and Europe, where priests, religious and lay leaders serve the world’s most vulnerable communities. Please keep the Pope’s missions in your prayers and be generous in next week’s collection for the Society for the Propagation of the Faith.

We will have envelopes in the pews if you wish to contribute by cash or check. You may also contribute via our secure online donation site at www.themadeleine.edu/second-collections Be sure to include “World Mission Sunday” where prompted as the organization you’re donating to.

ALL SAINTS DAY RETREAT

An invitation for you!

Our Lady of Peace Retreat – Beaverton

- Retreat Master: Fr. Peter Vecellio, OCD, from the Carmelite House of Studies in Mt. Angel
- Theme: “Saint for our Pandemic Times: Living St. Elizabeth of the Trinity.”
- Tuesday, November 1, 2022
- Retreat from 9 a.m. - 2:30 p.m. Doors open at 8:15 a.m.
- \$40 per person; includes lunch
- Register online at www.olpretreat.org; phone the retreat house at 503-649-7127 or email sisters@olpretreat.org. 3600 SW 170th Avenue, Beaverton.



In the Gospel today Jesus tells his disciples to pray always without becoming weary, indeed our prayer must always be an expression of our love for God, our family, our world, and especially for the suffering poor. As you bring your gift for St. Vincent de Paul, please say a special prayer for the poor who have no one to pray for them.

—Mary Clare O’Brien, 503-309-7639



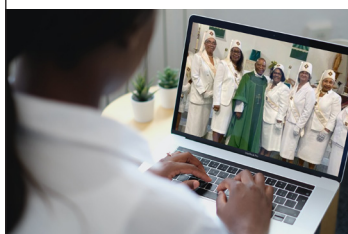
A PLACE AT THE TABLE

AFRICAN-AMERICANS ON THE PATH TO SAINTHOOD

FILM SCREENING, DISCUSSION, PRAYER

NOVEMBER 17TH, 2022

KNIGHTS OF ST. PETER CLAVER COUNCIL 225 • ZOOM



CELEBRATING BLACK CATHOLIC FAITH

LEARN. DISCUSS.
PRAY. ACT.

EVENT PROGRAM

VENUE

Zoom

DURATION

5:30pm - 7pm PST

REGISTRATION

Register today at:

<https://saintlysix.eventbrite.com/>

Inquiries and ADA accommodations can be found on the event Web site.



CAPPELLA ROMANA CONCERT OCTOBER 16: HEAVEN AND EARTH

3:00 pm, Main Church • Special discount offer for Madeleine parishioners

The chamber choir Cappella Romana is coming back to The Madeleine on Sunday, October 16, with a program of profound mystical music stemming from ancient Christian traditions, called "Heaven and Earth."

Cappella Romana would like to invite

all Madeleine parishioners to attend with a special 30% discount on all tickets in advance. Type LOVEMADELEINE in the discount code field at checkout or call Cappella Romana for personal assistance, (503) 236-8202.

More information at cappellaromana.org

WEEKLY MASS TIMES

Masses:

Tuesday, Wednesday, Friday 8:00 am
Thursday No School: 8:00 am
During School: 2:00 pm
Saturday Vigil 5:00 pm
Sunday 8:00 am, 10:00 am

► Livestream 10:00 am Sunday
at youtube.com/themadeleineparish

Penance By appointment; call Parish Office

PARISH OFFICE

Hours Monday–Friday, 10:00 am–3:00 pm

Phone: 503-281-5777 **Fax:** 503-281-0673

School Office 503-288-9197

PARISH STAFF

Rev. Mike Biewend—Pastor
fathermike@themadeleine.edu ext. 111

Deacon Mike O'Mahoney—Permanent Deacon
deaconmike@themadeleine.edu

Carol Glasgow—School Principal
cglasgow@themadeleine.edu 503-288-9197

John Garrow—Business Manager
jgarrow@themadeleine.edu ext. 118

My Schoning—Assistant Business Manager
mhoang@themadeleine.edu ext. 118

Darlene Maurer—Pastoral Assistant
dmaurer@themadeleine.edu ext. 125

Therese Fenzl—Director of Spiritual Ministries
tfenzl@themadeleine.edu ext. 116

Maria Manzo—Director of Music
mmanzo@themadeleine.edu ext. 113

Allison Blakemore—Bookkeeper
ablakemore@themadeleine.edu ext. 119

Guy Allen—Events Manager
gallen@themadeleine.edu

Mary Prusso—Registration
mprusso@themadeleine.edu ext. 112

Julie Kupers—Special Events
jkupers@themadeleine.edu 720-936-5635

Janeen Reilly—Parish Administrator
jreilly@themadeleine.edu ext. 110

Terry Silva—Facilities Support
tsilva@themadeleine.edu ext. 117

Rich Hammons—Director of Communications
rhammons@themadeleine.edu ext. 129

SACRAMENTS

Marriages, Funerals, Anointing of the Sick—
Fr. Mike ext. 111

Infant Baptism—Darlene Maurer ext. 125

First Reconciliation, First Eucharist—
Rose Horton sac-prep@themadeleine.edu

RCIA—Christi Bohmbach, rcia@themadeleine.edu

Confirmation—Fr. Mike ext. 111

COUNCILS & CONTACTS

Pastoral Council—Meg Scharle

Finance Council—Jim Jones 503-284-3301

Buildings & Grounds—Erin Couch 503-281-9575

School Advisory—Eric Robinson 971-227-3772

Facility Requests—themadeleine.edu/facilities

Maintenance Requests—John Garrow
jgarrow@themadeleine.edu ext. 118

St Vincent de Paul (Food, utility, rent assistance)
Mary Clare O'Brien 503-309-7639

Bulletin submissions due 5:00 pm Tuesday

Email to bulletin@themadeleine.edu

In Memoriam

THE MADELEINE FAMILY REMEMBERS

J.C. KIZAK

Funeral Mass Wednesday, October 19, 10:00 am

A Funeral Mass will be held for J.C. Kizak on Wednesday, October 19, 10:00 am at The Madeleine.

Jeanne Cecile Kizak (or J.C. as she preferred to be called), died peacefully in her sleep on October 4, 2022.

J.C. was born in Cleveland, Ohio, February 10, 1947. She relocated to Portland with two of her sisters in 1977.

J.C. graduated with a B.A. in Communications from Cleveland State University. As a retiree, she earned a Master's degree in ESL from Portland's Concordia University. J.C. was a Lector and Extraordinary Minister at The Madeleine Parish.

J.C.'s working life took her in numerous directions. She had a floral business in Cleveland. She worked for 10 years at the City of Portland and the Port of Portland. She taught at a business school, working with abused and immigrant women, teaching them secretarial skills, life skills, and how to dress for and prepare for a job interview. She often gave students her own business attire to keep so they had appropriate interview and work apparel. She organized drives to get proper clothing, phones, and other technical supplies for her students.

Since childhood, J.C. was a "foodie." She was a wonderful cook and could make a fine meal from an empty cupboard. She treasured her collection of cookbooks, many of which were from places and countries she visited.

For many years, J.C. worked with the Concordia Neighborhood

Association. She helped with the preservation of Kennedy School and its development as a bar, restaurant, and inn.

In recent years, J.C. worked teaching ESL to both children and adults. J.C. participated in on-line and Zoom language groups, conversing in German, Japanese, and Spanish. She taught English in Tanzania. Recently, she tutored grade school students, teaching them to read and enjoy books. J.C. was an avid reader and she thought it very important to get children excited to read. She would carefully pick books out for each individual student to make each one's reading experience the most successful it could be.

J.C.'s parents, Thomas R. Kizak and Cecilia M. Kizak of Cleveland, and brother Thomas M. Kizak predeceased her. She is survived by three sisters and three nieces: Marianne Kizak of Colorado Springs, Kriz Kizak Wines (brother-in-law, James Wines) of New York City, and Antoinette Kizak of Chicago and her daughters Amanda, Taliana, and Bekira Rabinowitz.

J.C.'s sisters are very grateful for the help received recently from The Madeleine parish community.



Please pray for J.C., her family, and all the faithfully departed from The Madeleine



MADELEINE MARKETPLACE CALL FOR VENDORS

Register at www.themadeleine.edu/marketplace

Our annual Madeleine Marketplace Holiday Bazaar is Thursday, December 8, 2022. We are reaching out to potential vendors with an invitation to operate a booth selling items.

The one-day outdoor Marketplace opens at 2 pm and closes at 8 pm, taking place in front of The Madeleine Parish Hall and Fireside Room. Hundreds of parents, kids, parishioners and community members get a kick start on their Christmas shopping, buy hostess gifts for holiday entertaining, and much more. The evening's festive atmosphere is embellished with our annual

Christmas tree lighting.

Food and drink are available for purchase as well as kids crafts, gingerbread house contest, caroling and pictures with Santa.

Vendor FAQ:

- ▶ Table fee is \$60; Registration deadline November 28
- ▶ The event ends at 8 pm.
- ▶ Vendors can begin setup at 1:00 pm on December 8.
- ▶ This a family friendly event. Children are encouraged.
- ▶ Tables will be assigned.
- ▶ We have 8-foot rectangular tables & 60" round tables available. Please be sure to specify your

preference when you register for the event.

- ▶ Vendors take payments at their own risk.
- ▶ Food and drink will be available for purchase.
- ▶ The Marketplace organizers retain the right to refuse vendors if the products are not appropriate. (Please no cannabis products or any images or objects that are not child friendly.) If it is determined that your products are not appropriate for this event, your table fee will be refunded.

Questions? Contact Julie Kupers at jkupers@themadeleine.edu, or leave a message at 503-281-5777.



In Memoriam

THE MADELEINE FAMILY REMEMBERS

ELIZABETH “BETTY” DERRAH COUCH

Funeral Mass Saturday, October 22, 11:00 am

A Funeral Mass will be held for longtime parishioner and Madeleine School graduate Betty Couch on Saturday, October 22, 11:00 am at The Madeleine.

A rosary will be held at 10:30; a reception will follow in the Old Madeleine Church. All are welcome.

It's not the way she would have wanted her life to end, this hard-working mother and wife whose fondness for numbers led her into a major healthcare C-Suite. But dementia finally stitched the wings onto her earthy body on Monday, September 19, at 7:30 am—no doubt she attended the Queen's funeral that day from her heavenly seat!

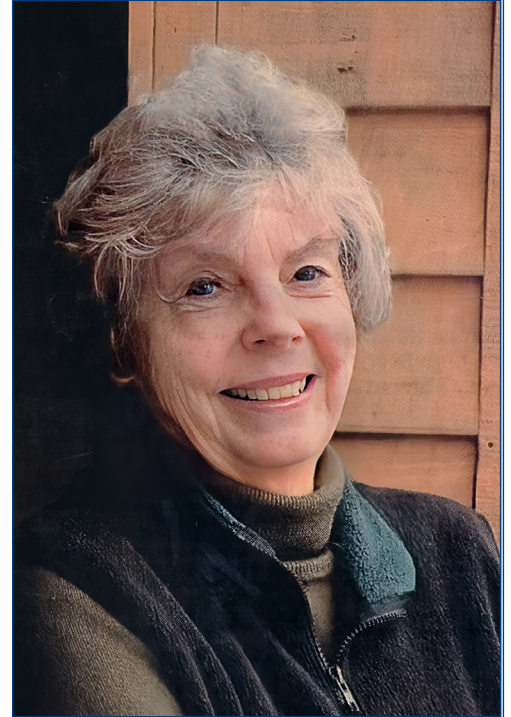
Born in Portland August 1, 1931, Betty was the first of Ed and Gertrude Derrah's three daughters. After attending 12 years of parochial school graduating from The Madeleine School then Holy Child Academy, she became an Alpha Phi at the University of Oregon in 1949 and earned her Bachelor of Business Administration in 1953. After heading to San Francisco to work in the buyer's training program at the Emporium, her days as a single woman soon came to a halt when her Kappa Sigma boyfriend, Dick Couch, offered her a cigarette pack with an engagement ring inside. Who could refuse such a romantic gesture?

Portland is where they set up home, raising four daughters, and sadly losing a young son. Always looking to stay busy, she took tailoring classes, knit extensively, ironed altar cloths, volunteered at school and made sure her girls had the best education. When it came time to send her oldest daughter, Christie, to St. Mary's Academy, one income was not enough—so she earned the \$500 she needed for tuition by going door-to-door for the 1970 US Census. Finally using her degree, she got a job in book-keeping—but noticing how much the auditor made for reviewing year-end financials, she went back to school at Portland State for classes that would qualify her to sit for the CPA exam.

Armed with her CPA license and extensive Medicare knowledge gained at a large Portland accounting firm, she jumped at an offer from Kaiser Permanente as Director of Financial Planning, living the lesson she taught her daughters: take the job that scares you! Betty proved repeatedly that hard work pays off, especially to her daughters who would all go off to professional careers of their own. She retired as the Chief Financial Officer for Kaiser Permanente, a job she absolutely cherished.

Once retired, she travelled extensively and volunteered in many capacities, especially within the Catholic Church and as a leader

with Catholic and interfaith charities focused on elder-care and hospice care. She enjoyed the parish communities she became part of as she moved about the Portland area (St. Francis in Sherwood, Holy Redeemer and The Madeleine in Portland)—and taught many a priest how finances work. Whether they fully understood is another issue altogether!



Betty was an ardent supporter of The Old Madeleine Church restoration project—donating funds to restore the spectacular 5-panel St. Catherine stained glass. She even donated the proceeds from the sale of her car to the project. Fun note: her 1955 wedding to Dick was the very last wedding held in the old church (until the restoration, of course). Shortly after, the current church was dedicated and all weddings moved there.

She loved her grandchildren dearly, and generously set aside college funds for them, as her belief in the benefits of education never wavered. What an example she set.

Family includes her daughters Christie Kmetz (Gabe), Vicky Boubel (Tom), Erin Couch (Rich Hammons) and Lisa Gambee (John), her sister Nancy Derrah, eight grandchildren and three great-grandchildren. She was preceded in death by her young son Ricky, her husband Dick and sister Mary Lee Rundle.

A very special call out to the caregivers at The Pavilion Mt. Tabor who ensured mom was well cared for, especially in her final weeks. There are no words to adequately thank you all.

In honor of Betty, please consider gifts to the Myotonic Dystrophy Foundation (www.myotonic.org/donate) or to The Madeleine Church (www.themadeleine.edu/in-memory).

Please pray for Betty, her family, and all the faithfully departed from The Madeleine

RECYCLING PROGRAMS AT THE MADELEINE

Marked collection bins in the breezeway facing 23rd Ave.

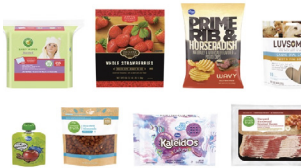
The Madeleine's Laudato Si' Circle and Care for Creation Ministry have joined with U. S. based recycler, Terracycle, to offer our parish, school, and community opportunities to responsibly recycle specific items (primarily plastics) not generally handled at curbside. Terracycle has added more manufacturers to its program, and in turn, we have expanded our recycling offerings. Here is a current listing of what we are collecting. Please keep this in mind:

- ▶ Do not include garbage or items not specifically mentioned in the descriptions.
- ▶ Empty containers of contents. No need to wash first; ensure packaging is dry.



KROGER FLEXIBLE PLASTICS

All Kroger brand flexible plastic packaging can now be accepted. Includes Private Selection and Simple Truth brands as well.



METAL-BASED COOKWARE AND CUTLERY

All brands of metal-based cookware, bakeware, and cutlery (non-stick Aluminum, Stainless Steel, Carbon Steel, Cast Iron). Please make sure items are thoroughly clean and dry.



SWIFFER REFILLS



Swiffer only brands of Sweeper™ Dry, Wet, and XL Refills, WetJet Refills™, and Duster™ Refills.

LATE JULY® SNACKS

All Late July® snack packaging as seen in these examples. Limited to Late July brand only.



ORAL CARE PRODUCTS

All brands of used or empty oral care products, including toothpaste tubes, tooth brushes, and dental floss containers.



FOOD STORAGE

All brands of well-used plastic and glass food storage containers.



GILLETTE® AND VENUS RAZORS AND RAZOR BLADES

All brands of blades and razors (systems and disposable units, and replaceable-blade cartridge units), rigid plastic packaging, and flexible plastic bag packaging.



CIGARETTE BUTTS, SANTA FE NATURAL TOBACCO COMPANY

All brands of fully extinguished cigarettes (and ashes) and tobacco products, including filters, plastic packaging, inner foil packaging, rolling paper, and loose tobacco pouches.



BIC WRITING INSTRUMENTS AND PACKAGING

All brands of empty writing instruments, glue sticks, water-color dispensers, highlighters, paint sets, and flexible packaging.



OFFSITE RECYCLING OPPORTUNITIES FOR FAMILIES

REDYPER DISPOSABLE DIAPERS

Subscription service for purchasing and recycling Redyper brand disposable diapers through Terracycle

LOOP

Offers zero-waste packaging of everyday essentials (beauty, health and personal care, grocery, and household essentials) from leading brands (including Haagen-Dazs!) Details at www.loopstore.com

Details on all programs at www.themadeleine.edu/terracycle



WELCOME ABOARD

The Madeleine Auction • 11/5/22

SUPPORT THE MADELEINE AUCTION — PURCHASE RAFFLE TICKETS ONLINE!

Buying raffle tickets has always been a great way to support our parish school’s auction, which goes to the general fund to help keep Catholic education affordable for families. But now we’re pleased to offer them online, so ANYONE can buy them (well, anyone who’s in the state of Oregon, that is). So visit www.themadeleine.edu/raffle and buy your raffle tickets today! Just \$10 each!

RAFFLE PRIZES • \$10 PER TICKET

GRAND PRIZE: Option of \$4000 Travel Voucher or \$4000 Catholic School Tuition Voucher (Portland-area K-12)

SECOND PRIZE: \$750 Travel Voucher

THIRD PRIZE: \$250 Powell’s Gift Card

Need not be present to win. 4,500 tickets available. Drawing to be held at The Madeleine School, 3240 NE 23rd Avenue, Portland, OR 97212. Ticket drawn 11/5/2022 at approximately 8:30 pm. Cost \$10 per ticket. Winner responsible for applicable taxes. Restrictions may apply. Not redeemable for cash. Must be in Oregon to purchase online.



Buy tickets online: www.themadeleine.edu/raffle


Bulletin Advertising: contact Rich Hammons • bulletin@themadeleine.edu • 503--281-5777

Timmco
INSURANCE

Brian Timm
Susan Ames | Derek Ames

1615 NE Broadway | 503-288-8818
www.timmco.com

AUTO | HOME | BUSINESS | LIFE

TIM WALTERS 
Principal Broker

The most trusted name in Real Estate!

Committed to the NE Portland

Neighborhoods since 1991



503-545-1880 | TimWaltersRealtor@Gmail.com | TimWaltersPc.com

Mark McGinnis

Parishioner, Parent
Mortgage Advisor



NMLS 98586
971-300-0484
mark.mcginis@spmc.com
"It's about service!"




Soccer Camp
Bernie Fagan
EST. 1983

T.C. O'LEARY'S
a little irish
PUB

2926 NE Alberta Street
A little taste of Ireland!



Parishioners Tom, Siobhan & Aine O'Leary

JOHN M. WYNN
ATTORNEY AT LAW
McGill, Kapranos & Wynn
Parishioner

Hollywood Professional Center, 3939 NE Hancock St., Ste. 305
jmwpxd@qwestoffice.net • 503-287-7333




LANCE MARRS

PRINCIPAL BROKER
503.701.5323
PORTLAND MODERN REAL ESTATE
LICENSED IN OREGON
PORTLANDMODERN.COM




PAUL MARRS

MORTGAGE LOAN OFFICER NMLS ID #5212
O:503.781.2114 B:503.994.8559
PMARRS@CANOPYMORTGAGE.COM
CANOPYMORTGAGE.COM/PAULMARRS
CANOPY MORTGAGE



Beaverton Branch Canopy Mortgage, LLC 12655 SW Center Street Beaverton OR 97005 NMLS ID #1359687

JOSÉ MESA AUTO WHOLESALE, LLC
"The mobile auto dealer who is always in your neighborhood."
YOUR DISCOUNT AUTO RETAILER SINCE 1992!
sales@josemesa.com 503-789-0438 www.josemesa.com
NEW•USED•BUY•SELL•LEASE•TRADE•CONSIGN•BROKER•APPRAISE



Dr. Phil Doleac, PC
Orthodontics for all ages
www.magic-smiles.com

Beaverton Portland Scappoose
503.644.7009 503.255.1694 503.543.4488



Sweetly Aimee, LLC
Custom Wedding and All-Occasion Cakes and Desserts

Aimee Holzschuh
Parishioner & Parent
503.998.7368
www.SweetlyAimee.com



Beaumont Vision:
providing full-service eyecare for all ages, including comprehensive exams, glasses and contacts

Stop by to view our unique eyewear
Most insurances accepted

4331 NE Fremont St
Ph: 503-331-3937

JOHN W. LOBO PAINTING

Custom Interior & Exterior
Creative Finishes
503-969-3337 CCB#89027
Licensed Bonded Insured

ADVERTISE HERE!
Contact Rich Hammons,
bulletin@themadeleine.edu



Retrouvaille
A Christian Peer Ministry
A LIFELINE FOR HURTING MARRIAGES

Is your marriage tearing you and your family apart?
Weekends held every February, June & October at Mt. Angel Retreat Home


www.helpourmarriage.com
503-704-7382
Donated by Kevin & Carol McMenamin

ANNE C. STEINER
ESTATE PLANNING
ELDER LAW ATTORNEY
503.946.8361 • 1915 NE Cesar Chavez Blvd.
PARISHIONER - anne.c.steiner@gmail.com
WILLS - TRUSTS - PROBATE
GUARDIANSHIP - CONSERVATORSHIP



PAUL MYERS, Ph.D.,LLC
PSYCHOTHERAPY, COUNSELING & CONSULTING SERVICES


(503) 381-6685 paulmyersphdpdx@gmail.com
www.paulmyersphdpdx.com




THEORY MORTGAGE

Beating Banks Daily

Brian DuVal
503-850-7667



NMLS 5912, NMLS 1848246



Ashley
REALTY WORKS TEAM

PARISHIONERS, NEIGHBORS, EXPERT REALTORS

Wick & Karoline Ashley
karoline@ashleyrealtyworks.com
(503) 819-4851
237 NE Broadway Suite 100

RE/MAX equity group



CITY HOME IMPROVEMENT, Inc.

Kitchens | Bathrooms | Additions
Since 1956

Please visit our showroom or call for a free in-home estimate

503-253-7591

www.cityhomeimprovementinc.com
8811 NE Sandy Blvd. Portland, OR 97220



WILLAMETTE FINANCIAL ADVISORS, LLC
PERSONALIZED ADVICE FROM TRUSTED ADVISORS

James M Jones

Financial Advisor, CFP®
Parishioner
Direct 503.284.9200
Office 503.7470306
jimj@wfinadv.com




Whole house remodels

- Kitchens • Bathrooms
- Basements • Additions

In-house architecture & design

Nathalie Roloff, Parishioner

503.245.0685
rolloffconstruction.com

4300 NE Fremont #130

CCB #140721
WA#ROLOFC1873KU



ROLOFF CONSTRUCTION