

THIS WEEK AT THE MADELEINE

Furthering the Reign of God, Where All Are Welcome • May 7–8, 2022



ENVIRONMENTAL ENRICHMENT SERIES

FINAL SESSION AND SOCIAL GATHERING

Register now at www.themadeleine.edu/ees

Our Environmental Enrichment Series has been a huge success. Two more events remain in this series:

► **May 11: Empowering and Mobilizing Youth**— Find out how to get youth even more involved in saving the earth!

► **May 18: Family Friendly Social Gathering**— Join us 5:30–7:30 pm at St. Charles for a family-friendly social gathering, dinner, and information stations providing

practical suggestions and resources for easily and mindfully adopting sustainable practices. Food catered by Santo Domingo Taqueria (donations gratefully accepted but not required), or feel free to bring your own picnic. Signups required, and since we need to order the delicious food, the signup deadline is May 16. So please, sign up today!

Register today! www.themadeleine.edu/ees

Inside this week's bulletin:

- **Madeleine Reflections**—See Page 5 for a lovely reflection from Marilyn Robb, "Revealing God's Glory," as she reflects on the words of Psalm 19: 2-3.
- **Environmental Corner**—See pages 6 & 7 for lots of Care for Creation based information.
- **The Madeleine is hiring**—Three part-time jobs are available to work with the many...and growing by the day...events in our parish facilities. Page 2.

Fourth Sunday of Easter

THE APOSTLES ENDURED much to preach the Gospel. We don't have to face the suffering they did, or undergo the hardships of persecuted Christians in some areas of the world today. But our challenge is to know how to live the Gospel in a secular age. We rely on the same Shepherd who guided them and now guides us.

PRAY FOR OUR FAITHFULLY DEPARTED

- Beth Wills—*Funeral May 17*
- Sarah Frelander Riddle—*Funeral May 18*
- Joan Brenner
- Bill Rooney
- Katie Scharle
- Michael Masterson

PRAYER REQUESTS

For those who are ill, or in need of our prayers

- Mike Wakamatsu
- Marty Foster
- Kevin McMenamin
- Lisa Nice

WORSHIP & PRAYER

- 05/10, Tues. Ruth Mickels †
- 05/11, Weds. William Choat †
- 05/12, Thurs. Neil Oliver †
- 05/13, Fri. Cliff Walkup †
- 05/14, Sat. Josephine Burke †
- 05/15, Sun. 8:00 am . . . The Madeleine Community
10:00 am . . . Hal † & Vivian Hunerlach

Calendar This Week

All Masses in person only unless noted

SUNDAY, MAY 8

▶ Mother's Day

8:00 am: Mass—Church

10:00 am: Mass—Church  **ALSO LIVESTREAMS**

MONDAY, MAY 9

6:30 pm: FA—Fireside Rm

TUESDAY, MAY 10

▶ Nourish Our Neighbors Gr. 2

8:00 am: Mass—Church

9:00 am: Adoration—Church

WEDNESDAY, MAY 11

8:00 am: Mass—Church

2:30 pm: Children's Choir Rehearsal

7:00 pm: Madeleine Choir Rehearsal

THURSDAY, MAY 12

2:00 pm: Mass—Church

FRIDAY, MAY 13

8:00 am: Liturgy of the Word—Church

SATURDAY, MAY 14

▶ Catholic Charities Collection

9:30 am: Alzheimer's Group—St. Catherine Room

1:00 pm: Stephanie Schneiderman Recital—Old Church

5:00 pm: Mass—Church

7:00 pm: CDZ Collegium Musica - Latin America—Old Church

SUNDAY, MAY 15

▶ Catholic Charities Collection

8:00 am: Mass—Church

9:00 am: RCIA—St. Catherine Room

10:00 am: Mass—Church  **ALSO LIVESTREAMS**

10:00 am: First Communion Class—Commons

PARISH LIFE

THE MADELEINE IS HIRING!

We have some part-time jobs available with flexible “as needed” hours. Perfect for a school parent with some spare time or, in the case of the dishwashers, a student.

Parish Events Manager

The Madeleine has wonderful facilities for rent, and our Parish Events Manager helps not only sell the facilities to prospective clients, but helps organize and manage events from wedding and funeral receptions to outside auctions and even some outdoor events. Works in a fast-paced environment and requires a exceptional attention to detail.

Events Coordinator

Works at the direction of the Parish Events Manager. Responsibilities include set up and take down of event spaces, maintaining relationships and professionalism with clients, and overseeing the responsibilities of dishwashers and bussers. Minimum age 21.

Dishwashers

Washes dishes for parish, school and rental events in our Parish Hall kitchen. Minimum age 16 years.

More information on these positions at www.themadeleine.edu/jobs

ANNUAL BABY BOTTLE DRIVE CONTINUES

Please join The Madeleine Parish and Knights of Columbus in supporting Mother & Child Education Center with its Baby Bottle Campaign.

Take home a bottle today and return it at the conclusion of the campaign. Coins, dollars, and checks are welcome. Money collected in the campaign helps support mothers and families in need.

More than 2,400 families were assisted during 2021 and the Center was able to keep its doors open continuously throughout the COVID pandemic. Several pregnant mothers who recently fled from Ukraine

have also been helped in the last month.

Mother & Child Education Center, located at 1515 NE 41st, also welcomes donations of gently loved children's clothing from infant to 5, maternity clothing, diapers, wipes, strollers, and books. Mother & Child offers hope, support, education, and guidance to women who are pregnant and parenting to help build a community of competent, confident mothers.

Services are available Monday-Friday and after-hours through a parenting support line. Call 503-249-5801 or email mauraw@momchildpdx.org

MADELEINE BOOK CLUB

We cordially invite you to join our group for opportunities to connect with other readers for great book discussions and camaraderie. We are currently reading *Homegoing*, by Yaa Gyasi, which we will be discussing Tuesday evening, May 17 and Thursday morning, May 19. *Homegoing* is a novel of breathtaking sweep and emotional power that traces three hundred years in Ghana and along the way also becomes a truly great American novel. This book is extraordinary for its exquisite language, its implacable sorrow, its soaring beauty, and for its monumental portrait of the forces that shape families and nations.



For more details about our book club, please contact: Gretchen Stevenson, MBC Ministry Coordinator, 503-312-6834 or gypsyfrau47@yahoo.com

SEND US YOUR CLASS OF 2022 GRADUATES!

www.themadeleine.edu/graduates

We want to recognize all Class of 2022 high school graduates from The Madeleine in our bulletin this June. Whether she or he went to our parish school or not...we want to recognize each and every one!



Visit www.themadeleine.edu/graduates If your grad's school is not listed in the menu, enter it in the “other” field.

We need to receive your Graduate's name by June 7 so we can publish in our June 12 bulletin. Thank you!

MILESTONES

Baptism

Congratulations and welcome to **Henry Joseph Kupers** son of Kyle and Julie Kupers, who joined the Church through the sacrament of baptism on Thursday.



Today, we celebrate “Good Shepherd Sunday” where we reflect on the care and love of Jesus for us. Your gift to the Society of St. Vincent de Paul will show that you are indeed the disciple of Jesus, the Good Shepherd, as it will bring your love to those who live in fear and doubt, loneliness and dread.
—Mary Clare O'Brien, 503-309-7639

MARY, THE ROSARY, AVE MARIAS... AND MY MOM

Ask anyone what religious object is most symbolic in the Catholic Church, and many will answer, "the rosary, of course." The word rosary comes from Latin and means a garland of roses—the rose being one of the flowers used to symbolize Mary, the Mother of God. The origins of the rosary are sketchy at best. The use of prayer beads and repeated meditative prayers has its roots in pre-Christian times. Tradition holds that St. Dominic (d. 1221) had a vision of the Blessed Mother and devised the rosary as we know it. However, some 20th century scholars disavow St. Dominic as the inventor, and prefer to believe the rosary evolved more organically over time.

Suffice to say, for centuries the basic prayers consist of five decades that include an Our Father, ten Hail Marys and the Doxology. Each complete recitation (four "rounds of the beads") is made up of twenty mysteries (significant events in the life of Jesus and Mary) which correspond to Christ's birth, passion, death and resurrection. These are categorized as Joyful, Sorrowful, Glorious and Luminous (the latter instituted by Saint Pope John Paul in 2002 in his apostolic letter *Rosarium Virginis*). The rosary beads come in handy so that you can keep track of the prayers. Since it takes about an hour to pray all four decades, most people opt to say just one (and corresponding mysteries) at a time.

As a child, I first remember praying the rosary fervently the night my beloved horse got into a terrible accident and almost died (miraculously, he lived and was my best friend for 25 years). To this day, the rosary is my "go-to" devotion. I say it when I travel, in joy and in sorrow, or even in thanksgiving—and since my mother came to live with us—every morning. There is no doubt that I got my devotion to Mary and the rosary from my mom's example. In fact, my mom spent 30 years of her life bringing pilgrims to Marian sites all over the world. Suffice to say, we have said A LOT of rosaries. Along the way, we have picked up a treasure-trove of rosaries from around the world. Of every color, shape

and size, they are literally tucked everywhere throughout our home! Greeting you at the door, my mom's special rosaries are displayed proudly on the outstretched arm of a 3-foot stone statue of "Our Lady Queen of Peace" (hand-carried from a pilgrimage to Medjugorje). Every one of them has a story attached to it—a kind of rosary travelog of her pilgrimages—and among her prized possessions.

The main prayer of the rosary is the "Hail Mary," which stems from two passages in the Gospel of Luke (Luke 1:28 & 1:42)—referred to as the "Annunciation" and the "Visitation," accordingly (not to be confused with the last-ditch effort of a long football pass). The prayer didn't appear in this form until about the 11th century—enjoying widespread appeal after it was incorporated into the Roman Breviary of 1568. The Latin text has been a favorite by composers for centuries. As a solo, the "Ave Maria" is traditionally sung at BOTH weddings and funerals. The most popular are by Franz Schubert (although for some reason, it has fallen out of favor with the Church) and the Bach-Gounod version—the latter based upon Bach's famous "Prelude in C Major" with the melody and text overlaid some 80 years later by Charles Gounod. Choral versions of the "Ave Maria" are numerous. Certainly one of the most beautiful is the masterful setting by Sergei Rachmaninoff from his "All-Night Vigil" (1915). Originally composed in Old Church Slavonic, the "Bogoroditse Devo" is most often performed as a "stand alone" with the Latin text. It is an exquisite blend of the old and new—punctuated by ancient chant and infused with soaring melodies, romantic harmonies and a distinct Russian Orthodox flavor. Closer to home, you may recognize the Latin words as we sing the "Litany of Mary" this month.

As we celebrate all mothers on this day, I am especially thankful for our Blessed Mother, the rosary, "Ave Maria's"..... and my mom.

—*Maria Manzo*



Music Notes

WEEKLY MASS TIMES

Masses:

Tuesday, Wednesday, Friday 8:00 am
Thursday (During School) 2:00 pm
Saturday Vigil 5:00 pm
Sunday 8:00 am, 10:00 am

Notes:

- ▶ Livestream 10:00 am Sunday at youtube.com/themadeleineparish
- ▶ Updates at www.themadeleine.edu/mass

Penance By appointment; call Parish Office

PARISH OFFICE

Hours Monday–Friday, 10:00 am–3:00 pm
Phone: 503-281-5777 **Fax:** 503-281-0673
School Office. 503-288-9197

PARISH STAFF

- Rev. Mike Biewend**—Pastor
fathermike@themadeleine.edu ext. 111
- Deacon Mike O'Mahoney**—Permanent Deacon
deaconmike@themadeleine.edu
- Carol Glasgow**—School Principal
cglasgow@themadeleine.edu 503-288-9197
- John Garrow**—Business Manager
jgarrow@themadeleine.edu ext. 118
- Darlene Maurer**—Pastoral Assistant
dmaurer@themadeleine.edu ext. 125
- Therese Fenzl**—Director of Spiritual Ministries
tfenzl@themadeleine.edu ext. 116
- Maria Manzo**—Director of Music
mmanzo@themadeleine.edu ext. 113
- Ann Hart**—Events Manager
ahart@themadeleine.edu
- Allison Blakemore**—Bookkeeper
ablakemore@themadeleine.edu ext. 119
- Mary Prusso**—Registration
mprusso@themadeleine.edu ext. 112
- Julie Kupers**—Special Events
jkupers@themadeleine.edu 720-936-5635
- Janeen Reilly**—Parish Administrator
jreilly@themadeleine.edu ext. 110
- Terry Silva**—Facilities Support
tsilva@themadeleine.edu ext. 117
- Rich Hammons**—Director of Communications
rhammons@themadeleine.edu ext. 129

SACRAMENTS

- Marriages, Funerals, Anointing of the Sick**—Fr. Mike ext. 111
- Infant Baptism**—Darlene Maurer ext. 125
- First Reconciliation, First Eucharist**—Rose Horton ext. 127
- RCIA**—Christi Bohmbach, rcia@themadeleine.edu
- Confirmation**—Fr. Mike ext. 111

COUNCILS & CONTACTS

- Pastoral Council**—Meg Scharle
- Finance Council**—Jim Jones 503-284-3301
- Buildings & Grounds**—Erin Couch 503-281-9575
- School Advisory**—Eric Robinson 971-227-3772
- Facility Requests**—themadeleine.edu/facilities
- Maintenance Requests**—John Garrow
jgarrow@themadeleine.edu ext. 118

Bulletin submissions due 5:00 pm Tuesday

Email to bulletin@themadeleine.edu

"The day is coming when a single carrot, freshly observed, will set off a revolution." - Paul Cezanne

CARROT REVOLUTION

Carrot Revolution by Gabriella Smith
Prospects of a Misplaced Year by Andy Akiho
- Pyxis Quartet -

45TH PARALLEL
UNIVERSE

THURSDAY

MAY 19TH, 7:00 PM

THE OLD CHURCH
AT THE MADELEINE

TICKETS & INFO:

WWW.45THPARALLELPDX.ORG

PETER ZISA & FRIENDS CONCERT: MUSICAL CULTURES OF LATIN AMERICA

Saturday, May 14 • 7:00 pm • The Old Church

Suggested Donation: \$20 adults, \$10 seniors, children free

Join classical guitarist Peter Zisa for a musical journey to Cuba, Mexico, Brazil, and Argentina in the Old Church at The Madeleine, Saturday, May 14 at 7:00 pm. Joining Peter will be Gabriela Gimenes (flute), Maria Manzo (piano) and Michael Kissinger (oboe).

Collegium's Musical Travel Series, a music and educational program that provides audiences a cultural passport to the music and cultures of peoples of distant lands and periods in time. Solo guitar, guitar & flute, and keyboard and oboe. Music of Ponce, Brower, Bonfa, Jobim, Machado, Villa-Lobos, Maximo Pujol, and a few surprises!

Peter & Gabriela, Guitar and Flute Duo: "balanced, virtuosic, expressive, dynamic, and stylistically versatile." C.M.

Peter Joseph Zisa: "...transcends mere technique to a higher level of musical artistry" (Scott Zeidel, University Santa Barbara), "...delicately blends melodic line and texture into an exciting musical experience" (Louis Sahagun, Los Angeles Times). For more information: CasaDellaZisa@gmail.com



“Rivers of blood and tears are flowing in Ukraine. It is not merely a military operation, but a war, which sows death, destruction and misery. The number of victims is increasing, as are the people fleeing, especially mothers and children. The need for humanitarian assistance in that troubled country is growing dramatically by the hour. The Holy See is ready to do everything, to put itself at the service of this peace ... “War is madness! Stop, please! Look at this cruelty!””

—Pope Francis via Twitter
@pontifex

Bravol! Concerts Northwest Presents

A Concert of Joy!

Sunday, May 22 @ 3 PM

The Madeleine Old Church



Charlie Chaplin's "A Dog's Life"
(silent film with live orchestra)

Songs from Broadway:

'The Music Man'

'The Pirates of Penzance'

Songs by George Gershwin



Northwest Chamber Orchestra | Bravol Northwest Chamber Choir

Admission is FREE. Tickets are required for admission.

Get your free tickets at www.bravoconcerts.com



This is a benefit concert to support the programs of Bravol Concerts and to bring LIVE concerts back to our community post-COVID. Contributions at the concert and online are appreciated.

Revealing God's Glory

Invite you to join me in a conversation with our God as I reflect on the words of Psalm 19: 2-3.

"The heavens are telling the glory of God; the firmament proclaims the work of his hands."

Lord, help us discover your glory and be amazed, when we look to your heavens and see the many colors in the rainbow, or the soft pastels of the morning sky at dawn or observe the vibrant hues of the western horizon at the close of day. Help us to not take for granted the beautiful blossoming trees or the kaleidoscope of a butterfly's wing. The firmament proclaims the work of your hands. You awaken the earth and restore it to life with the warmth and light of the sun. The seeds begin to stir and break through the soil, once again promising food for your children. When the harvest is over the trees drop their leaves and cover the earth in a blanket of red and gold to prepare the firmament for a time of slumber during the dark and cold months ahead. You shape the mountains to rise above the firmament and clothe them in garments of white. You carve the deep valleys and fill them with rivers and lakes that reflect the blue of your heavens above. Open our eyes to the splendor of your heavens and the work of your hands, that we may give you thanksgiving and praise.

"The heavens are telling the glory of God; the firmament proclaims the work of his hands."

Lord, help us acknowledge your glory. Attune our ears to the magnificent sounds of your heavens; the distant rumble of thunder or the roar of the wind as it pushes its way across the firmament. Help us recognize the sounds of the earth as they are echoed back to the heavens; the crashing waves in the ocean, or the roar of its rivers as they cascade down the steep mountain side.

Help us respond with reverence to the silence of the heavens; the soundless gentle falling of countless flakes of snow, or the way the fog tiptoes through the countryside and spreads its gossamer veil, or the stillness of the moon as it climbs above the firmament and takes its place among the planets and stars in the dark night sky. Give us joyful hearts as we delight with the birdsong by day or are lulled to sleep with the nocturnal chant of your creatures who stand guard through the night. Open our ears to the magnificent sounds of your heavens and the work of your hands that we may give you praise and thanksgiving.

"The heavens are telling the glory of God; and the firmament proclaims the work of his hands."

Awaken our senses to the intimate beauty of your heavens; the warm caress of the sun, the cooling breath of a summer breeze, and even the cleansing moisture of the all too familiar rain. Encourage us to reach out and touch the work of your hands on the firmament; the warm fur or smooth feathers of your living creatures, the rough bark of a stately tree, the soft sand beneath bare feet, or the rich soil as we prepare it for planting. Open our sense of smell to the fragrance of the flowers and sharpen our sense of taste to appreciate the many flavors of the food you provide. Awaken our senses to the beauty of your heavens and the work of your hands that we may give you thanksgiving and praise.

In closing, let us rejoice with Marty Haugen in the words from his hymn, "Canticle of the Sun"

*"The heavens are telling the glory of God,
and all creation is singing for joy.
Come, dance in the forest.
Come, play in the field
and sing, sing to the glory of the Lord."
This day is yours. Go forth and discover
the glory of the Lord.*

—Marilyn Robb

WORLDWIDE MARRIAGE ENCOUNTER

Trust the Lord, Jesus with your marriage. Learn how to follow Jesus in your relationship on the upcoming Worldwide Marriage Encounter Experience on May 27-29 at Our Lady of Peace Retreat House in Beaverton, Oregon. For information about WWME call 503-704-0836 or by email at reservations@rediscoverthepark.org

To apply for your WWME Experience or find other dates go to rediscoverthepark.org

SOLO SENIORS

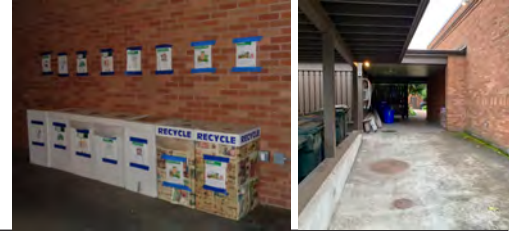
Are you single and over age 55? Solo Seniors is a Catholic-based social organization for single men and women over age 55 in the greater Portland area. It primarily provides social and recreational programs in a safe and friendly environment for its members. For more information, a Solo brochure or a copy of our monthly newsletter, call Ann Buchholz 503-235-9047.

RECYCLING PROGRAMS AT THE MADELEINE

Marked collection bins in the breezeway facing 23rd Ave.

The Madeleine's Laudato Si' Circle and Care for Creation Ministry have joined with U. S. based recycler, Terracycle, to offer our parish, school, and community opportunities to responsibly recycle specific items (primarily plastics) not generally handled at curbside. Terracycle has added more manufacturers to its program, and in turn, we have expanded our recycling offerings. Here is a current listing of what we are collecting. Please:

- ▶ Do not include garbage or items not specifically mentioned in the descriptions.
- ▶ Empty containers of contents. No need to wash first; ensure packaging is dry.



DISCONTINUED: STYROFOAM/ POLYSTYRENE

Regrettably, we can no longer accept Styrofoam and Polystyrene materials. Although endorsed by Metro, we have recently learned (through an independent report) of major violations by the local recycler in the responsible handling and recycling of these materials.

LATE JULY® SNACKS

All Late July® snack packaging as seen in these examples. Limited to Late July brand only.



METAL-BASED COOKWARE AND CUTLERY

All brands of metal-based cookware, bakeware and cutlery (non-stick Aluminum, Stainless Steel, Carbon Steel, Cast Iron). Please make sure items are thoroughly clean and dry.



SWIFFER REFILLS



Swiffer only brands of Sweeper™ Dry, Wet, and XL Refills, WetJet Refills™, and Duster™ Refills.

FOOD STORAGE

All brands of well-used plastic and glass food storage containers.



GILLETTE® AND VENUS RAZORS AND RAZOR BLADES

All brands of blades and razors (systems and disposable units, and replaceable-blade cartridge units), rigid plastic packaging, and flexible plastic bag packaging.



ORAL CARE PRODUCTS

All brands of used or empty oral care products, including toothpaste tubes, tooth brushes, and dental floss containers.



CIGARETTE BUTTS, SANTA FE NATURAL TOBACCO COMPANY

All brands of fully extinguished cigarettes (and ashes) and tobacco products, including filters, plastic packaging, inner foil packaging, rolling paper, and loose tobacco pouches.



BIC WRITING INSTRUMENTS AND PACKAGING

All brands of empty writing instruments, glue sticks, water-color dispensers, highlighters, paint sets, and flexible packaging.



OFFSITE RECYCLING OPPORTUNITIES FOR FAMILIES

REDYPER DISPOSABLE DIAPERS

Subscription service for purchasing and recycling Redyper brand disposable diapers through Terracycle

LOOP

Offers zero-waste packaging of everyday essentials (beauty, health and personal care, grocery, and household essentials) from leading brands (including Haagen-Dazs!) Details at www.loopstore.com

Details on all programs at www.themadeleine.edu/terracycle

TIPS FOR GREEN LIVING

One of the most efficient ways to reduce waste is to compost. Many organizations offer seminars and workshops where we can find out how to go about composting. It's pretty simple: you install a compost bin in a hidden area in your backyard. Things that can be composted include fruit and vegetable residues, tea bags, coffee, egg shells, leaves and all plant and garden waste.

Do not compost meat or milk products as this will generate bad smells and attract vermin.

Your compost will save you money because you will no longer need to purchase loam for your plants! For more information, get in touch with your municipality or your local gardening center.

NE Portland Catholic Parishes

ENVIRONMENTAL ENRICHMENT SERIES

Zoom presentations April 20–May 11

Northeast Portland Catholic parishes St. Charles, St. Andrew, Holy Redeemer and The Madeleine are pleased to announce our Environmental Enrichment Series, a series of nationally renowned speakers discussing critical climate and environmental topics.

Each 90-minute session, 6:30–8:00 pm, will be held via Zoom, and include the presentation, a Q & A opportunity, and breakout groups. All are welcome.

Then following the series on May 18, join us for a social and informational gathering in person!

Information and free registration at www.themadeleine.edu/ees



Katharine Hayhoe

Christians and Climate Change

Katharine's presentation date has passed, but visit www.themadeleine.edu/ees for a replay



Marc Brune

Greening Buildings for Carbon Neutrality

Visit www.themadeleine.edu/ees for a replay



May 4—Rachel Wheeler, PhD

Ecospirituality

Dr. Wheeler's presentation date has passed, but visit www.themadeleine.edu/ees for a replay



May 11—Kids Saving the Earth

Empowering and Mobilizing Youth
Kids for Saving Earth provides "education into action" environmental education curriculum to instructors including action projects, worksheets, music programs, art projects and more. Learn what you can do to empower Kids Saving the Earth.

May 18—Family Friendly Social Gathering

Join us 5:30–7:30 pm at St. Charles for a family-friendly social gathering, dinner, and information stations providing practical suggestions and resources for easily and mindfully adopting sustainable practices. Food catered by Santo Domingo Taqueria (donations gratefully accepted but not required), or feel free to bring your own picnic. **Please register so we know how many to expect.** St Charles is located at 5310 NE 42nd Avenue, Portland, Oregon 97218.



All sessions provided free of charge, but please register online at

www.themadeleine.edu/ees

IN PARTNERSHIP WITH
St. Charles
St. Andrew
Holy Redeemer
PARISHES




Timmco
INSURANCE

Brian Timm
Susan Ames | Derek Ames

1615 NE Broadway | 503-288-8818
www.timmco.com

AUTO | HOME | BUSINESS | LIFE

TIM WALTERS 
Principal Broker

The most trusted name in Real Estate!

Committed to the NE Portland
Neighborhoods since 1991



503-545-1580 | TimWaltersRealtor@gmail.com | TimWaltersPc.com

Mark McGinnis

Parishioner, Parent
Mortgage Advisor



NMLS 98586
971-300-0484
mark.mcginis@sPMC.com
"It's about service!"




Soccer Camp
Bernie Fagan
EST. 1983

T.C. O'LEARY'S
a little irish
PUB

2926 NE Alberta Street
A little taste of Ireland!



Parishioners Tom, Siobhan & Aine O'Leary

JOHN M. WYNN
ATTORNEY AT LAW
McGill, Kapranos & Wynn
Parishioner



Hollywood Professional Center, 3939 NE Hancock St., Ste. 305
jmwpxd@qwestoffice.net • 503-287-7333


LANCE MARRS

PRINCIPAL BROKER
503.701.5323
PORTLAND MODERN REAL ESTATE
LICENSED IN OREGON
PORTLANDMODERN.COM




PAUL MARRS

MORTGAGE LOAN OFFICER NMLS ID #5212
O:503.781.2114 B:503.994.8559
PMARRS@CANOPYMORTGAGE.COM
CANOPYMORTGAGE.COM/PAULMARRS
CANOPY MORTGAGE



Beaverton Branch Canopy Mortgage, LLC 12655 SW Center Street Beaverton OR 97005 NMLS ID #1359687

JOSÉ MESA AUTO WHOLESALE, LLC
"The mobile auto dealer who is always in your neighborhood."
YOUR DISCOUNT AUTO RETAILER SINCE 1992!
sales@josemesa.com 503-789-0438 www.josemesa.com
NEW•USED•BUY•SELL•LEASE•TRADE•CONSIGN•BROKER•APPRAISE



Dr. Phil Doleac, PC
Orthodontics for all ages
www.magic-smiles.com

Beaverton Portland Scappoose
503.644.7009 503.255.1694 503.543.4488

BUY OR SELL

OUR TEAM CAN HELP!



Opt.
REAL ESTATE

JEFF KERSTEN
REALTOR®
503.720.9179
jeff@theopt.com



Beaumont Vision:
providing full-service eyecare for all ages, including comprehensive exams, glasses and contacts

Dr. Allen R. Lewis
Shop by TV: www.ouruniqueeyecare.com
Most insurances accepted!

4331 NE Fremont St
Ph: 503-331-3937

JOHN W. LOBO PAINTING

Custom Interior & Exterior
Creative Finishes
503-969-3337 CCB#89027
Licensed Bonded Insured



Sweetly Aimee, LLC
Custom Wedding and All-Occasion Cakes and Desserts

Aimee Holzschuh
Parishioner & Parent
503.998.7368
www.SweetlyAimee.com



PAUL MYERS, Ph.D., LLC
PSYCHOTHERAPY, COUNSELING & CONSULTING SERVICES

(503) 381-6685 paulmyersphdpdx@gmail.com
www.paulmyersphdpdx.com



Retrouvaille
A Christian Peer Ministry
A LIFELINE FOR HURTING MARRIAGES

Is your marriage tearing you and your family apart?
Weekends held every February, June & October at Mt. Angel Retreat Home
www.helpourmarriage.com
503-704-7382
Donated by Kevin & Carol McMenamin

DOSIER CONSTRUCTION

Kitchen & Bathroom Remodels
503-985-9982
Austin Dosier, Parishioner
dosierconstruction@gmail.com OR CCB 215259

ANNE C. STEINER
ESTATE PLANNING
ELDER LAW ATTORNEY

503.946.8361 • 1915 NE Cesar Chavez Blvd.
PARISHIONER - anne.c.steiner@gmail.com

**WILLS - TRUSTS - PROBATE
GUARDIANSHIP - CONSERVATORSHIP**




THEORY MORTGAGE

Beating Banks Daily

Brian DuVal
503-850-7667



NMLS 5912, NMLS 1848246



Ashley
REALTY WORKS TEAM

PARISHIONERS, NEIGHBORS, EXPERT REALTORS

Wick & Karoline Ashley
karoline@ashleyrealtyworks.com
(503) 819-4851
237 NE Broadway Suite 100




CITY HOME IMPROVEMENT, Inc.

Kitchens | Bathrooms | Additions
Since 1956

Please visit our showroom or call for a free in-home estimate

503-253-7591

www.cityhomeimprovementinc.com
8811 NE Sandy Blvd. Portland, OR 97220



WILLAMETTE FINANCIAL ADVISORS, LLC
PERSONALIZED ADVICE FROM TRUSTED ADVISORS

James M Jones
Financial Advisor, CFP®
Parishioner
Direct 503.284.9200
Office 503.7470306
jimj@wfinadv.com




Whole house remodels
• Kitchens • Bathrooms
• Basements • Additions
In-house architecture & design

Nathalie Roloff, Parishioner

503.245.0685
rolloffconstruction.com

4300 NE Fremont #130

CCB #140721
WA#ROLOFC1873KU



ROLOFF CONSTRUCTION