



THIS WEEK AT THE MADELEINE

Furthering the Reign of God, Where All Are Welcome • April 30–May 1, 2022

NOTES FROM ARCHBISHOP SAMPLE'S TOWN HALL IN THE OLD CHURCH

Archbishop Sample met with parishioners from The Madeleine and St. Rose in the Old Church Wednesday evening for a Town Hall Meeting. To open, he said he was prompted to start these visits to the Vicariates for a couple of reasons:

- ▶ The 2018 sex abuse crisis put a spotlight on bishops and the failure to deal with this issue. He felt he needed to be closer to the people to build trust.
- ▶ His dream was to be a pastor of souls to a community, never intending to become a bishop...but it happened, and after nine years, he was absorbed in administrative work. He found being amongst the people filled a hole in his heart as to why he became a priest in the first place.

A few questions and sharing:

▶ *What is his feeling of the Synod on Synodality?*

The Archbishop feels that Pope Francis is trying to teach us how to be a church that prays and discerns on where the Holy Spirit is leading the church. He feels this is a process that we can use on an Archdiocesan level to deal with our local issues.

▶ *Sharing of good news*

Parishioner Dan LaGrande shared that the thing that gives him joy is that we are

blessed with Father Mike as our pastor.

The Archbishop insisted that we need to focus on and strengthen the people we have in their faith. He noted that the largest population growth in our Archdiocese is from the immigrant community. He expressed worry about the lack of young people in the church and spoke of ways to evangelize, hoping soon to start a program of home groups where a small number of people gather to share their faith.



Archbishop Sample concluded by stating that the mission of the church is to be a witness to the gospel of Jesus Christ—we have opportunities to share our faith and evangelize each and every day as simply as telling someone you will pray for them.

It was a special evening and we thank Archbishop Sample for this pastoral visit with us.

Third Sunday of Easter

JESUS APPEARS TO HIS DISCIPLES to challenge and reassure them. Their path will be his. So he feeds them, gives them their mission and appoints Peter to lead them. He is still among us, feeding us, speaking to us, encouraging us and calling us to live the Gospel. How aware are we of his presence?

PRAY FOR OUR FAITHFULLY DEPARTED

- ▶ Beth Wills—Funeral May 17
- ▶ Sarah Frelander Riddle—Funeral May 18
- ▶ Joan Brenner
- ▶ Katie Scharle
- ▶ Bill Rooney
- ▶ Michael Masterson

PRAYER REQUESTS

For those who are ill, or in need of our prayers

- ▶ Mike Wakamatsu
- ▶ Kevin McMenamin
- ▶ Marty Foster
- ▶ Lisa Nice

WORSHIP & PRAYER

- 05/02, Tues. Margie Dittmann
- 05/04, Weds Joan Brenner †
- 05/05, Thurs. Don Kullberg †
- 05/06, Fri. Pam Biewend †
- 05/07, Sat. Sylvia Manzo †
- 05/08, Sun. 8:00 am . . . The Madeleine Community
- 10:00 am Catherine Scharle †

MAY BIRTHDAYS

Happy birthday to some of our honored parishioners!

- ▶ Bonnie Gregg
- ▶ Jean Mitchell
- ▶ Joyce Abraham
- ▶ Ann LaGrande
- ▶ Sharen Rees
- ▶ Dorcas Turner
- ▶ Jim Dolan

Congratulations to our 2022 Confirmandi

On Friday, April 29, 14 youth from The Madeleine received the Sacrament of Confirmation from Archbishop Sample at Holy Redeemer Church. Congratulations to all of our Confirmandi, and to our catechists—Therese Fenzl, Stephanie Fernandes, Trieu Nguyen, Heather Wilson—for such a and faith-affirming program.

- | | | |
|-------------------------|------------------------|------------------------|
| Henry Allen | Noah Kohlbecker | Payton Rigler |
| Jacob Berry | Natalie Ann Koski | Catherine Marie Ryan |
| Katie Berry | Sonia Anita Modha | Owen Dennis Slaughter |
| Nicholas James Gianotti | Madeleine Bleu Naugler | Braden “Brady” Michael |
| Celine Katherine Glavan | Owen Rigler | Wynn |

Calendar This Week

All Masses in person only unless noted

SUNDAY, MAY 1

8:00 am: Mass—Church

9:00 am: RCIA—St. Catherine Room

10:00 am: Mass with Archbishop Sample—

Mass—Church  **ALSO LIVESTREAMS**

10:00 am: First Communion Class—Fireside Rm

MONDAY, MAY 2

School Spirit Week

6:30 pm: FA—Fireside Rm

TUESDAY, MAY 3

Nourish Our Neighbors Gr. 3

8:00 am: Mass—Church

9:00 am: Adoration—Church

7:00 pm: Knights of Columbus Meeting—
Fireside Rm

WEDNESDAY, MAY 4

8:00 am: Mass—Church

2:30 pm: Children's Choir Rehearsal

7:00 pm: Madeleine Choir Rehearsal

7:00 pm: Safety and Security—Fireside Rm

THURSDAY, MAY 5

2:00 pm: Mass—Church

FRIDAY, MAY 6

► School Free Dress for Canned Food

► School Jogathon

8:00 am: Mass—Church

5:30 pm: Madeleine Fiesta—Parish Hall

SATURDAY, MAY 7

5:00 pm: Harmony Montessori School Auction—
Parish Hall

5:00 pm: Mass—Church

SUNDAY, MAY 8

► Mother's Day

8:00 am: Mass—Church

10:00 am: Mass—Church  **ALSO LIVESTREAMS**

PARISH LIFE

ANNUAL BABY BOTTLE DRIVE CONTINUES

Please join The Madeleine Parish and Knights of Columbus in supporting Mother & Child Education Center with its Baby Bottle Campaign kicking off the weekend of April 23.

Take home a bottle today and return it at the conclusion of the campaign. Coins, dollars, and checks are welcome. Money collected in the campaign helps support mothers and families in need.

More than 2,400 families were assisted during 2021 and the Center was able to keep its doors open continuously throughout the COVID pandemic. Several pregnant mothers who recently fled from Ukraine

have also been helped in the last month.

Mother & Child Education Center, located at 1515 NE 41st, also welcomes donations of gently loved children's clothing from infant to 5, maternity clothing, diapers, wipes, strollers, and books. Mother & Child offers hope, support, education, and guidance to women who are pregnant and parenting to help build a community of competent, confident mothers.

Services are available Monday-Friday and after-hours through a parenting support line. Call 503-249-5801 or email mauraw@momchildpdx.org

SAFETY & SECURITY COMMITTEE

Meets on Wednesday May 4 • Fireside Room

The Madeleine Safety & Security Committee's next meeting is scheduled for Wednesday, May 4th at 7 pm, in person, in the Fireside Room. Appropriate COVID precautions will be followed to ensure the health and well-being of everyone in attendance.

The Madeleine Safety & Security Committee serves in an advisory capacity, supporting the efforts of the school and the parish to provide a safe and secure faith experience. The Committee is currently drafting an Emergency Action Plan, providing a framework for preparedness

planning, decision-making, and emergency response to a disaster, pandemic, or other critical events.

The Committee welcomes new members from diverse fields and backgrounds to enrich our discussion and broaden our vision in our efforts to provide for the safety of our Madeleine School children, parents and parishioners. If you have an interest in becoming a member, or are looking for more information, please contact Dan O'Brien, Safety & Security Committee Chair, at safety@themadeleine.edu or visit our web page: www.themadeleine.edu/safety

MOTHER'S DAY MASS INTENTION CARDS

Have a Mother in your life remembered for a Mass intention. Cards are available in the back of the church. Cards may be put in the offertory baskets or delivered to the Parish Office. We will contact you to determine the date of the intention.



MILESTONES

Baptism

Congratulations and welcome to **Remington Grey Mayes**, child of Carol Jinks and Staci Mayes, who joined the Church through the sacrament of baptism this weekend!

Due to travel schedules,

information for our

May 15 & 22 bulletin needs

to be submitted no later

than Friday, May 6.

bulletin@themadeleine.edu

Thank you!



In this Sunday's Gospel, the disciples in their struggle finally recognize Jesus and proclaim, "It is the Lord!" "Have you considered answering the call to "help the poor recognize the Lord in their life" by joining the Society of St. Vincent de Paul?"

—Mary Clare O'Brien, 503-309-7639

Madeleine Fiesta

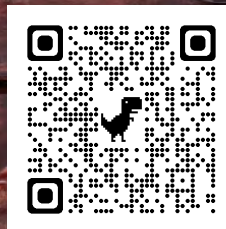
Friday, May 6 ~ 5:30 pm

\$20 per adult
\$10 kids age 10 & under

Taco Bar/ Taquitos
Live Music • Margaritas
Beer & Wine • Raffle
Fun, games & activities for
the kids...Silent disco, face
painting and more

We need volunteers!
Contact Julie Kupers,
jkupers@themadeleine.edu

Scan code
for tickets
& info



Please check your Ministry Schedule

As we are returning to normal, our ministerial commitments at Masses are returning as well. Our Ministry Scheduler software automatically schedules ministers based on preferences YOU have set in the software. If you receive an email from the system, please pay attention to it, and if you are unable to serve, please request a sub. Also, please log into the system and verify your preferred Mass times and minister positions.

Please be aware of and confirm your ministerial commitment each week:

1. **Online** through the web-based schedule at www.themadeleine.edu/minister-schedule
2. **By email.** You receive a reminder email each week with your ministerial commitment

WEEKLY MASS TIMES

Masses:

Tuesday, Wednesday, Friday 8:00 am
 Thursday (During School) 2:00 pm
 Saturday Vigil 5:00 pm
 Sunday 8:00 am, 10:00 am
 Contemplative Mass. . . last Sunday of each month
 6:00 pm Old Church

Notes:

- ▶ Livestream 10:00 am Sunday
at youtube.com/themadeleineparish
- ▶ Updates at www.themadeleine.edu/mass

PenanceBy appointment; call Parish Office

PARISH OFFICE

Hours Monday–Friday, 10:00 am–3:00 pm

Phone: 503-281-5777 **Fax:** 503-281-0673

School Office. 503-288-9197

PARISH STAFF

Rev. Mike Biewend—Pastor
fathermike@themadeleine.edu ext. 111

Deacon Mike O'Mahoney—Permanent Deacon
deaconmike@themadeleine.edu

Carol Glasgow—School Principal
cglasgow@themadeleine.edu . . 503-288-9197

John Garrow—Business Manager
jgarrow@themadeleine.edu ext. 118

Darlene Maurer—Pastoral Assistant
dmaurer@themadeleine.edu ext. 125

Therese Fenzl—Director of Spiritual Ministries
tfenzl@themadeleine.edu ext. 116

Maria Manzo—Director of Music
mmanzo@themadeleine.edu ext. 113

Ann Hart—Events Manager
ahart@themadeleine.edu

Allison Blakemore—Bookkeeper
ablakemore@themadeleine.edu ext. 119

Mary Prusso—Registration
mprusso@themadeleine.edu ext. 112

Julie Kupers—Special Events
jkupers@themadeleine.edu . . . 720-936-5635

Janeen Reilly—Parish Administrator
jreilly@themadeleine.edu ext. 110

Terry Silva—Facilities Support
tsilva@themadeleine.edu ext. 117

Rich Hammons—Director of Communications
rhammons@themadeleine.edu ext. 129

SACRAMENTS

Marriages, Funerals, Anointing of the Sick—
Fr. Mike ext. 111

Infant Baptism—Darlene Maurer ext. 125

First Reconciliation, First Eucharist—
Rose Horton. ext. 127

RCIA—Christi Bohmbach, rcia@themadeleine.edu

Confirmation—Fr. Mike. ext. 111

COUNCILS & CONTACTS

Pastoral Council—Meg Scharle

Finance Council—Jim Jones. 503-284-3301

Buildings & Grounds—Erin Couch . . 503-281-9575

School Advisory—Eric Robinson . . . 971-227-3772

Facility Requests—themadeleine.edu/facilities

Maintenance Requests—John Garrow
jgarrow@themadeleine.edu ext. 118

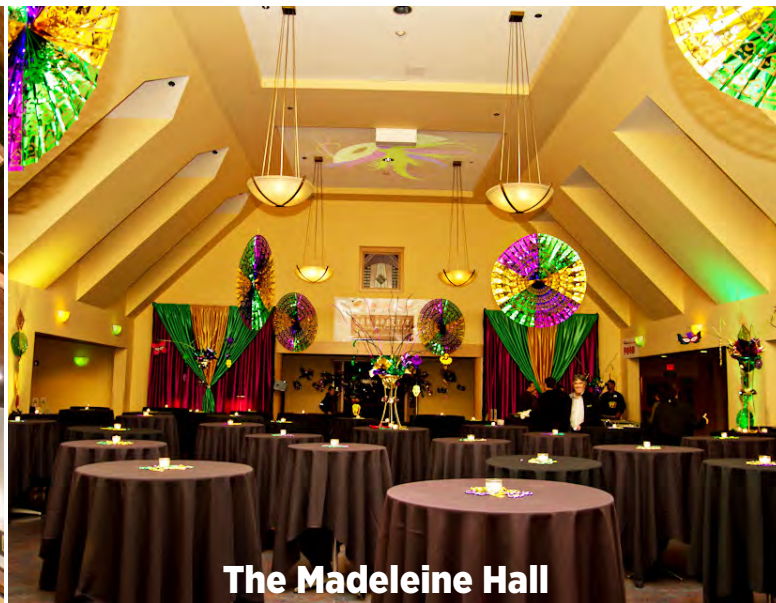
Bulletin submissions due 5:00 pm Tuesday

Email to bulletin@themadeleine.edu

Event spaces at The Madeleine are **booking up fast!** Call us today



The Old Church



The Madeleine Hall



St. Catherine Room



Fireside Room



If you have events in the planning stages, we invite you to consider The Madeleine as your venue. But do it quickly! We are booking weddings, concerts, recitals, meetings and more well into the fall already! If you have an upcoming event, contact us right away.

The Madeleine Hall

Whether dressed up for a formal gala, decorated for a dance, or setup for a professional dinner, The Madeleine Hall is our largest and most versatile space. The high, gabled ceiling adds a majestic aire, but the unique configuration retains an intimate feel. The fully equipped commercial kitchen is directly adjacent for event food that needs warm up or assembly, or to cook an entire meal.

The Fireside Room

On its own, The Fireside Room is a warm, cozy space for meetings, talks, recitals and small banquets. It seamlessly pairs with The Madeleine Hall for larger events or as a social area or silent auction space.

The Old Church

After undergoing a thoughtfully spectacular \$4.1 million renovation, **The Old Church at The Madeleine** is available for events from 20 to 200 people in a breathtaking, historic setting.

This beautiful space offers brand-new convenience and comfort with an historic 1911 aesthetic.

St. Catherine Room

This beautiful fellowship room, regaled with historically restored stained glass, is ideal for meetings, seminars or combined with The Old Church for larger events. Includes a sink, long counter space and refrigerator/freezer with ice maker.

From wedding receptions and retreats to auctions, recitals and fundraisers, our versatile event spaces—all air conditioned—are beautiful, cost effective and include ample amenities to make your event truly special.

Contact Ann Hart, Events Manager
ahart@themadeleine.edu or call
the Parish Office at 503-281-5777

PARISH LIFE

SEND US YOUR CLASS OF 2022 GRADUATES!

www.themadeleine.edu/graduates

We want to recognize all Class of 2022 high school graduates from The Madeleine in our bulletin this June. Whether she or he went to our parish school or not...we want to recognize each and every one!



Visit www.themadeleine.edu/graduates If your grad's school is not listed in the menu, enter it in the "other" field.

We need to receive your Graduate's name by June 7 so we can publish in our June 12 bulletin. Thank you!

MADELEINE BOOK CLUB

Are you a bookworm? Would you enjoy opportunities to meet with other parishioners and friends to share your thoughts about the contents of some very excellent books? If so, we invite you to join us at future discussion sessions.



Our book selection for May is *Homegoing*, by Yaa Gyasi.

For details and/or to be added to our email list, please contact our MBC coordinator: Gretchen Stevenson, gypsyfrau47@yahoo.com or 503-312-6834.

WORLDWIDE MARRIAGE ENCOUNTER

Trust the Lord, Jesus with your marriage. Learn how to follow Jesus in your relationship on the upcoming Worldwide Marriage Encounter Experience on May 27-29 at Our Lady of Peace Retreat House in Beaverton, Oregon.

For information about WWME call 503-704-0836 or by email at reservations@rediscoverthepark.org

To apply for your WWME Experience or find other dates go to rediscoverthepark.org

SOLO SENIORS

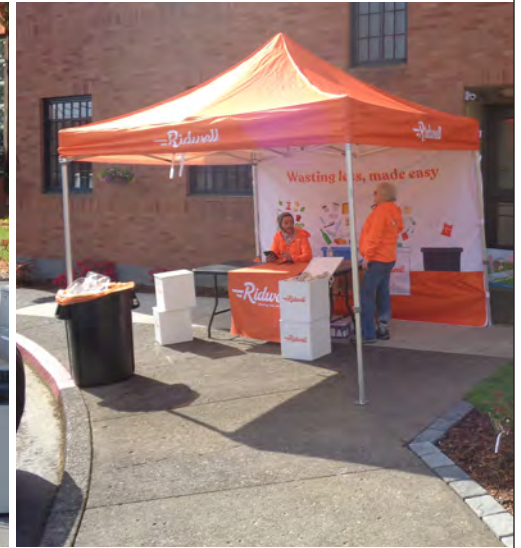
Are you single and over age 55? Solo Seniors is a Catholic-based social organization for single men and women over age 55 in the greater Portland area. It primarily provides social and recreational programs in a safe and friendly environment for its members. For more information, a Solo brochure or a copy of our monthly newsletter, call Ann Buchholz 503-235-9047.

Expanded E-Waste Recycling event: Truckloads of success!

This year's annual E-Waste Recycling Event was, for the first time, held in conjunction with 3 other parishes—St. Andrew, Holy Redeemer and St. Charles. Did it make a difference?

Well, by the time 10:00 am Mass was over—about halfway through the event—Green Century Recycling had to return to headquarters to get more giant pallet boxes to contain all the electronics that folks were bringing. The local community came on foot, on bikes, in convertibles, trucks, and SUVs!

Thanks to everyone who helped organize and who brought electronics to be responsibly recycled. And thank you to Ridwell who was on-site to collect plastic clamshells. Ridwell is offering a 10% discount for new subscribers of their recycling services via their website at www.ridwell.com/promotions/madeleine

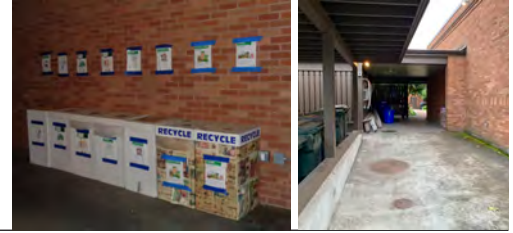


RECYCLING PROGRAMS AT THE MADELEINE

Marked collection bins in the breezeway facing 23rd Ave.

The Madeleine's Laudato Si' Circle and Care for Creation Ministry have joined with U. S. based recycler, Terracycle, to offer our parish, school, and community opportunities to responsibly recycle specific items (primarily plastics) not generally handled at curbside. Terracycle has added more manufacturers to its program, and in turn, we have expanded our recycling offerings. Here is a current listing of what we are collecting. Please:

- ▶ Do not include garbage or items not specifically mentioned in the descriptions.
- ▶ Empty containers of contents. No need to wash first; ensure packaging is dry.



DISCONTINUED: STYROFOAM/ POLYSTYRENE

Regrettably, we can no longer accept Styrofoam and Polystyrene materials. Although endorsed by Metro, we have recently learned (through an independent report) of major violations by the local recycler in the responsible handling and recycling of these materials.

LATE JULY® SNACKS

All Late July® snack packaging as seen in these examples. Limited to Late July brand only.



GILLETTE® AND VENUS RAZORS AND RAZOR BLADES

All brands of blades and razors (systems and disposable units, and replaceable-blade cartridge units), rigid plastic packaging, and flexible plastic bag packaging.



BIC WRITING INSTRUMENTS AND PACKAGING

All brands of empty writing instruments, glue sticks, water-color dispensers, highlighters, paint sets, and flexible packaging.



METAL-BASED COOKWARE AND CUTLERY

All brands of metal-based cookware, bakeware and cutlery (non-stick Aluminum, Stainless Steel, Carbon Steel, Cast Iron). Please make sure items are thoroughly clean and dry.



ORAL CARE PRODUCTS

All brands of used or empty oral care products, including toothpaste tubes, tooth brushes, and dental floss containers.



SWIFFER REFILLS



Swiffer only brands of Sweeper™ Dry, Wet, and XL Refills, WetJet Refills™, and Duster™ Refills.

FOOD STORAGE

All brands of well-used plastic and glass food storage containers.



CIGARETTE BUTTS, SANTA FE NATURAL TOBACCO COMPANY

All brands of fully extinguished cigarettes (and ashes) and tobacco products, including filters, plastic packaging, inner foil packaging, rolling paper, and loose tobacco pouches.



OFFSITE RECYCLING OPPORTUNITIES FOR FAMILIES

REDYPER DISPOSABLE DIAPERS

Subscription service for purchasing and recycling Redyper brand disposable diapers through Terracycle

LOOP

Offers zero-waste packaging of everyday essentials (beauty, health and personal care, grocery, and household essentials) from leading brands (including Haagen-Dazs!) Details at www.loopstore.com

Details on all programs at www.themadeleine.edu/terracycle

TIPS FOR GREEN LIVING

At the beginning of May, there are flowers, the weather is warmer and it is also time for the Fair Trade Fortnight. Fair Trade allows southern farmers and farm workers to receive a fair salary. When they enjoy better living conditions, families may avail themselves of health services and send their children to school

(rather than keeping them on the farm from a very young age). The leading products are Fair Trade coffee and chocolate, but there are also teas, rice, spices and bananas. Look for the "Fair Trade" logo and encourage a fair business in the name of the God who loves justice.

NE Portland Catholic Parishes

ENVIRONMENTAL ENRICHMENT SERIES

Zoom presentations April 20–May 11

Northeast Portland Catholic parishes St. Charles, St. Andrew, Holy Redeemer and The Madeleine are pleased to announce our Environmental Enrichment Series, a series of nationally renowned speakers discussing critical climate and environmental topics.

Each 90-minute session, 6:30–8:00 pm, will be held via Zoom, and include the presentation, a Q & A opportunity, and breakout groups. All are welcome.

Then following the series on May 18, join us for a social and informational gathering in person!

Information and free registration at www.themadeleine.edu/ees



Katharine Hayhoe

Christians and Climate Change

Katharine's presentation date has passed, but visit www.themadeleine.edu/ees for a replay



Marc Brune

Greening Buildings for Carbon Neutrality

Visit www.themadeleine.edu/ees for a replay



May 4—Rachel Wheeler, PhD

Ecospirituality

Dr. Wheeler is an Assistant Professor of Theology at University of Portland. In addition to teaching on the Bible, Christian spirituality, and spiritual practices, she has a particular interest in how people interpret their pro-environmental behavior as spiritual.



May 11—Kids Saving the Earth

Empowering and Mobilizing Youth

Kids for Saving Earth provides "education into action" environmental education curriculum to instructors including action projects, worksheets, music programs, art projects and more. Learn what you can do to empower Kids Saving the Earth.

May 18—Family Friendly Social Gathering

Join us 5:30–7:30 pm at St. Charles for a family-friendly social gathering, dinner, and information stations providing practical suggestions and resources for easily and mindfully adopting sustainable practices. Food catered by Santo Domingo Taqueria (donations gratefully accepted but not required), or feel free to bring your own picnic. **Please register so we know how many to expect.** St Charles is located at 5310 NE 42nd Avenue, Portland, Oregon 97218.



All sessions provided free of charge, but please register online at

www.themadeleine.edu/ees

IN PARTNERSHIP WITH
St. Charles
St. Andrew
Holy Redeemer
PARISHES




Timmco
INSURANCE

Brian Timm
Susan Ames | Derek Ames

1615 NE Broadway | 503-288-8818
www.timmco.com

AUTO | HOME | BUSINESS | LIFE

TIM WALTERS 
Principal Broker

The most trusted name in Real Estate!

Committed to the NE Portland
Neighborhoods since 1991



Mark McGinnis

Parishioner, Parent
Mortgage Advisor



NMLS 98586
971-300-0484
mark.mcginis@sPMC.com
"It's about service!"




Soccer Camp
Bernie Fagan
EST. 1983

T.C. O'LEARY'S
a little irish
PUB

2926 NE Alberta Street
A little taste of Ireland!



Parishioners Tom, Siobhan
& Aine O'Leary

JOHN M. WYNN
ATTORNEY AT LAW
McGill, Kapranos & Wynn
Parishioner



Hollywood Professional Center, 3939 NE Hancock St., Ste. 305
jmwpxd@qwestoffice.net • 503-287-7333


LANCE MARRS

PRINCIPAL BROKER
503.701.5323
PORTLAND MODERN REAL ESTATE
LICENSED IN OREGON
PORTLANDMODERN.COM



PAUL MARRS

MORTGAGE LOAN OFFICER NMLS ID #5212
O:503.781.2114 B:503.994.8559
PMARRS@CANOPYMORTGAGE.COM
CANOPYMORTGAGE.COM/PAULMARRS
CANOPY MORTGAGE



Beaverton Branch Canopy Mortgage, LLC 12655 SW Center Street Beaverton OR 97005 NMLS ID #1359687

JOSÉ MESA AUTO WHOLESALE, LLC
"The mobile auto dealer who is always in your neighborhood."
YOUR DISCOUNT AUTO RETAILER SINCE 1992!
sales@josemesa.com 503-789-0438 www.josemesa.com
NEW • USED • BUY • SELL • LEASE • TRADE • CONSIGN • BROKER • APPRAISE



Dr. Phil Doleac, PC
Orthodontics for all ages
www.magic-smiles.com

Beaverton Portland Scappoose
503.644.7009 503.255.1694 503.543.4488

BUY OR SELL

OUR TEAM CAN HELP!



Opt.
REAL ESTATE

JEFF KERSTEN
REALTOR®
503.720.9179
jeff@theopt.com



Retrouvaille
A Christian Peer Ministry
A LIFELINE FOR
HURTING MARRIAGES

Is your marriage tearing you and your family apart?
Weekends held every February, June & October at Mt. Angel Retreat Home
www.helpourmarriage.com
503-704-7382
Donated by Kevin & Carol McMenamin

DOSIER CONSTRUCTION

Kitchen & Bathroom Remodels
503-985-9982
Austin Dosier, Parishioner
dosierconstruction@gmail.com OR CCB 215259

ANNE C. STEINER
ESTATE PLANNING
ELDER LAW ATTORNEY

503.946.8361 • 1915 NE Cesar Chavez Blvd.
PARISHIONER - anne.c.steiner@gmail.com

WILLS - TRUSTS - PROBATE
GUARDIANSHIP - CONSERVATORSHIP



Beaumont Vision:
providing full-service eyecare for all ages, including comprehensive exams, glasses and contacts

Dr. Allen R. Lewis
Ship by to view our unique eyewear
Most insurances accepted!

4331 NE Fremont St
Ph: 503-331-3937

JOHN W. LOBO PAINTING

Custom Interior & Exterior
Creative Finishes
503-969-3337 CCB#89027
Licensed Bonded Insured



Sweetly Aimee, LLC
Custom Wedding and All-Occasion Cakes and Desserts

Aimee Holzschuh
Parishioner & Parent
503.998.7368
www.SweetlyAimee.com



PAUL MYERS, Ph.D., LLC
PSYCHOTHERAPY, COUNSELING & CONSULTING SERVICES

(503) 381-6685 paulmyersphdpdx@gmail.com
www.paulmyersphdpdx.com



THEORY MORTGAGE

Beating Banks Daily

Brian DuVal
503-850-7667

 NMLS 5912, NMLS 1848246



Ashley
REALTY WORKS TEAM

PARISHIONERS, NEIGHBORS, EXPERT REALTORS

Wick & Karoline Ashley
karoline@ashleyrealtyworks.com
(503) 819-4851
237 NE Broadway Suite 100




CITY HOME IMPROVEMENT, Inc.

Kitchens | Bathrooms | Additions
Since 1956

Please visit our showroom or call for a free in-home estimate

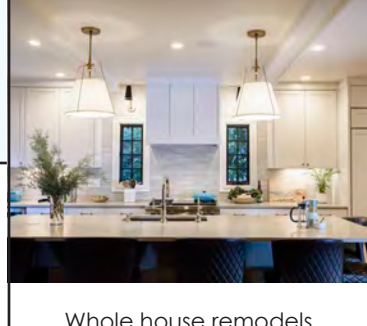
503-253-7591

www.cityhomeimprovementinc.com
8811 NE Sandy Blvd. Portland, OR 97220



WILLAMETTE FINANCIAL ADVISORS, LLC
PERSONALIZED ADVICE FROM TRUSTED ADVISORS

James M Jones
Financial Advisor, CFP®
Parishioner
Direct 503.284.9200
Office 503.7470306
jimj@wfinadv.com

Whole house remodels

- Kitchens • Bathrooms
- Basements • Additions

In-house architecture & design

Nathalie Roloff, Parishioner

503.245.0685
rolloffconstruction.com

4300 NE Fremont #130

CCB #140721
WA#ROLOFC1873KU



ROLOFF CONSTRUCTION