

This Week at The Madeleine

Furthering the Reign of God, Where All Are Welcome • April 16-17, 2022

Welcome to our newest members



Heather Stewart

Kevin Reavis

Mark Wilson

Heather, Kevin and Mark received the sacraments of initiation at the Easter Vigil.

Please welcome them and encourage them as they continue their journey of faith. Happy Easter!

ARCHBISHOP SAMPLE TO VISIT THE MADELEINE

Town Hall, April 27 in the Old Church • Mass, May 1 in the Main Church

Archbishop Sample will be making an official visit to The Madeleine, with two events open to all parishioners.

► **Town Hall, April 27, 6:30 pm**—Archbishop Sample will hold a Town Hall meeting with parishioners in our Old Church. This will be an unprecedented opportunity to hear directly from the Archbishop and to raise issues or concerns you may have,

or to hear what he has planned for the Archdiocese.

► **Mass, May 1, 10:00 am**—For the first time in his tenure, Archbishop Sample will celebrate a Sunday Mass at The Madeleine! It will be a very special liturgy, which will also debut our 2022 Mother's Day video...we hope everyone will attend.

Inside this week's bulletin:

- **Mothers & Children Photos**—Again this year we will feature photos of Mothers & Children at our Masses in May. See Page 2 for instructions on submitting your photos.
- **Madeleine Fiesta**—See Page 3 for details of this all-new family event.
- **Environmental Corner**—See pages 6-8 for lots of Care for Creation based information
- **Madeleine in Memorial**—Michael Masterson's funeral will be Friday, April 22. Details page 11.

Easter Sunday

MUCH AS IT MAY SOUND SURPRISING to us, the resurrection of Jesus seemed to be a surprise to his disciples. They did not understand the Scripture. We are reminded that we live by faith and seek understanding. Easter morning gives us our north star, the guiding light by which we live our lives. The death of Jesus was not his end. He was raised in a wholly unexpected way to new life. His destiny is ours; his new life will be shared by us who seek to follow him. On this Easter morning, may we be open to the unexpected ways God works in our lives.

PRAY FOR OUR FAITHFULLY DEPARTED

- Michael Masterson—Funeral April 22, 1:00 pm
- Bill Rooney
- Beth Wills
- Jared Gorsky
- Ed Kraus
- Maureen DeLany

PRAYER REQUESTS

For those who are ill, or in need of our prayers

- Katie Scharle
- Mike Wakamatsu
- Marty Foster
- Kevin McMenamin
- Lisa Nice

WORSHIP & PRAYER

- 04/19, Tues. Beth Wills †
- 04/20, Weds Hal † and Vivian Hunerlach
- 04/21, Thurs. Joseph Maurer †
- 04/22, Fri. Laura DiGiovini
- 04/23, Sat Wojciech Maly †
- 04/24, Sun. 8:00 am . . . The Madeleine Community
- 10:00 am Virginia Richards †

Calendar This Week

All Masses in person only unless noted

SUNDAY, APRIL 17

► Easter Sunday

8:00 am: Mass—Church

10:00 am: Mass—Church  **ALSO LIVESTREAMS**

11:30 am: Easter Egg Hunt and Easter Reception—Courtyard

MONDAY, APRIL 18

► Easter Monday: No School, Parish Office Closed

6:30 pm: FA—Fireside Rm

TUESDAY, APRIL 19

► Nourish Our Neighbors Gr. 5

8:00 am: Mass—Church

9:00 am: Adoration—Church

7:00 pm: Book Club—Fireside Rm

WEDNESDAY, APRIL 20

8:00 am: Mass—Church

7:00 pm: Madeleine Choir Rehearsal

THURSDAY, APRIL 21

10:00 am: Book Club—Fireside Rm

2:00 pm: Mass—Church

6:30 pm: SAC—Library

FRIDAY, APRIL 22

► School—11:30 AM dismissal

8:00 am: Mass—Church

11:30 am: Early Dismissal

1:00 pm: Michael Masterson Funeral

2:00 pm: Masterson Reception—Fireside Rm

SATURDAY, APRIL 23

► Catholic Home Missions Collection

3:30 pm: Baptism of Mac Fitzgerald—Church

5:00 pm: Mass—Church

SUNDAY, APRIL 24

► Catholic Home Missions Collection

8:00 am: Mass—Church

9:00 am: Recycling Event—Parish Hall Driveway

9:00 am: RCIA—St. Catherine Room

10:00 am: Mass—Church  **ALSO LIVESTREAMS**

10:00 am: First Communion Class—Fireside Rm

NO CONTEMPLATIVE MASS ON SUNDAY, APRIL 24

Next scheduled Contemplative Mass is May 29.

Visit www.themadeleine.edu/mass for updates.

PARISH OFFICE CLOSED MONDAY APRIL 17

We will be open as usual Tuesday morning!

PARISH LIFE

CELEBRATE MOTHERS IN MAY!

Upload mother & child photos to www.themadeleine.edu/mothers

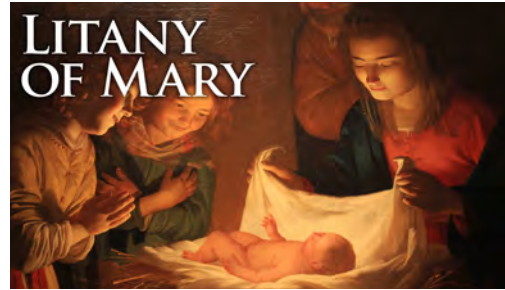
A May tradition at The Madeleine: celebrating the Month of Mary and Mother's Day in a special way!

Each weekend beginning April 30/ May 1, we will show a slideshow of mothers and children sent in from The Madeleine Community. The photos will show both in the church at 10:00 am Sunday Mass and on our livestream.

We are starting over—all new photos!

This year, again, we're making a fresh start, a blank canvas. So even if you've sent us a photo before, please send a new one this year.

Submissions can be either a photo of



mother and child (children), or a photo of mothers and their mothers. Please send us just one photo of a mother/child combo per family grouping, as we want to have time to show all our photos.

Send photos by April 27

Upload your photos to our website at www.themadeleine.edu/mothers

If you have only a photo print, bring it to the Parish Office during work hours (label it with your name and phone number). We will scan it and leave it for you to pick up.

Help us to honor all mothers and those from our community, as well as Mary, the Mother of God, in this very special way!

EASTER GIVING: THREE WAYS TO HELP

It's so exciting to see that we are carefully, slowly, prudently regaining some sort of post-pandemic normalcy....and we hope to see everyone flocking back for Holy Week and Easter Masses. We are humbled and gratified at the strong support that you, our parishioners, have continued to offer the past two challenging years.

One of our biggest collections of the year is typically Easter Sunday. Each year we budget for an Easter collection that is in addition to the Sunday collection.

In the mail recently, you likely received a letter asking for your support of our Easter collection.

Some parishioners account for Easter collections in regular online or automated giving. But if you are not among those who

do, we'd very much appreciate that you might consider an additional Easter gift.

We have three easy ways for you to help:

► **Envelope**—If you have an Easter envelope, mail to the Parish Office or drop it off, or bring it to any Mass you may be attending.

► **Online**—Visit our online giving page at www.themadeleine.edu/parishgiving where you can click to our secure online payment site.

► **Electronic Transfer**—If you are making stewardship donations via electronic transfer, contact our bookkeeper, Allison Blakemore, to arrange an additional payment.

Thank you for your loyal support.

THE WISDOM OF FULTON SHEEN

Your gift this Easter • Pick up a copy at all Easter Masses

Our gift to you this Easter is *The Wisdom of Fulton Sheen*, a powerful collection of writings that will encourage you to think differently about who you are, how your life is unfolding, what God is calling you to next, and what priorities will lead you to the peace and purpose you desire.



With each turn of the page, it is easy to see why Sheen's inspiring and practical messages inspired so many during his lifetime and continue to inspire so many people today.

Pick up a copy for your family at Easter Masses as your gift from

The Madeleine.



Today as we celebrate the feast of Easter, like Mary Magdalene and the Disciples we find the challenge of also seeing and believing the Resurrection. As you make your gift to St. Vincent de Paul you help those who are poor and hungry to "see and believe" in the Resurrection.

—Mary Clare O'Brien, 503-309-7639

Madeleine Fiesta

Friday, May 6 ~ 5:30 pm

Tickets: www.themadeleine.edu/fiesta

\$20 per adult

\$10 kids age 10 & under

Taco Bar/ Taquitos
Live Music • Margaritas
Beer & Wine • Raffle

Fun, games & activities for
the kids... Silent disco, face
painting and more

We need volunteers!
Contact Julie Kupers,
jkupers@themadeleine.edu



MADELEINE BOOK CLUB WISHES YOU A BLESSED EASTER

MBC cordially invites you to join our group of enthusiastic readers. We will be meeting the week following Easter to discuss Pope Francis' book, *Let Us Dream: The Path to a Better Future*. Francis sketches a transformative vision of society that



reorients neoliberal priorities toward considerations of human dignity and the common good.

For additional details and/or be added to our email list please contact: Gretchen Stevenson 503-312-6834 or email at gypsyfrau47@yahoo.com

Due to travel schedules, information for our May 22 bulletin needs to be submitted no later than May 8. bulletin@themadeleine.edu

WEEKLY MASS TIMES

Masses:

Tuesday, Wednesday, Friday 8:00 am
Thursday (During School) 2:00 pm
Saturday Vigil 5:00 pm
Sunday 8:00 am, 10:00 am
Contemplative Mass. . . last Sunday of each month
6:00 pm Old Church.

Notes:

- ▶ Livestream 10:00 am Sunday
at youtube.com/themadeleineparish
- ▶ Updates at www.themadeleine.edu/mass

Penance By appointment; call Parish Office

PARISH OFFICE

Hours Monday–Friday, 10:00 am–3:00 pm

Phone: 503-281-5777 **Fax:** 503-281-0673

School Office 503-288-9197

PARISH STAFF

Rev. Mike Biewend—Pastor
fathermike@themadeleine.edu ext. 111

Deacon Mike O'Mahoney—Permanent Deacon
deaconmike@themadeleine.edu

Carol Glasgow—School Principal
cglasgow@themadeleine.edu . . . 503-288-9197

John Garrow—Business Manager
jgarrow@themadeleine.edu ext. 118

Darlene Maurer—Pastoral Assistant
dmaurer@themadeleine.edu ext. 125

Therese Fenzl—Director of Spiritual Ministries
tfenzl@themadeleine.edu ext. 116

Maria Manzo—Director of Music
mmanzo@themadeleine.edu ext. 113

Ann Hart—Events Manager
ahart@themadeleine.edu

Allison Blakemore—Bookkeeper
ablakemore@themadeleine.edu ext. 119

Mary Prusso—Registration
mprusso@themadeleine.edu ext. 112

Julie Kupers—Special Events
jkupers@themadeleine.edu . . . 720-936-5635

Janeen Reilly—Parish Administrator
jreilly@themadeleine.edu ext. 110

Terry Silva—Facilities Support
tsilva@themadeleine.edu ext. 117

Rich Hammons—Director of Communications
rhammons@themadeleine.edu ext. 129

SACRAMENTS

Marriages, Funerals, Anointing of the Sick—
Fr. Mike ext. 111

Infant Baptism—Darlene Maurer ext. 125

First Reconciliation, First Eucharist—
Rose Horton ext. 127

RCIA—Christi Bohmbach, rcia@themadeleine.edu

Confirmation—Fr. Mike ext. 111

COUNCILS & CONTACTS

Pastoral Council—Meg Scharle

Finance Council—Jim Jones. 503-284-3301

Buildings & Grounds—Erin Couch . . . 503-281-9575

School Advisory—Eric Robinson 971-227-3772

Facility Requests—themadeleine.edu/facilities

Maintenance Requests—John Garrow
jgarrow@themadeleine.edu ext. 118

Bulletin submissions due 5:00 pm Tuesday

Email to bulletin@themadeleine.edu

Event spaces at The Madeleine are **booking up fast!** Call us today



The Old Church



The Madeleine Hall



St. Catherine Room



Fireside Room



If you have events in the planning stages, we invite you to consider The Madeleine as your venue. But do it quickly! We are booking weddings, concerts, recitals, meetings and more well into the fall already! If you have an upcoming event, contact us right away.

The Madeleine Hall

Whether dressed up for a formal gala, decorated for a dance, or setup for a professional dinner, The Madeleine Hall is our largest and most versatile space. The high, gabled ceiling adds a majestic aire, but the unique configuration retains an intimate feel. The fully equipped commercial kitchen is directly adjacent for event food that needs warm up or assembly, or to cook an entire meal.

The Fireside Room

On its own, The Fireside Room is a warm, cozy space for meetings, talks, recitals and small banquets. It seamlessly pairs with The Madeleine Hall for larger events or as a social area or silent auction space.

The Old Church

After undergoing a thoughtfully spectacular \$4.1 million renovation, **The Old Church at The Madeleine** is available for events from 20 to 200 people in a breathtaking, historic setting.

This beautiful space offers brand-new convenience and comfort with an historic 1911 aesthetic.

St. Catherine Room

This beautiful fellowship room, regaled with historically restored stained glass, is ideal for meetings, seminars or combined with The Old Church for larger events. Includes a sink, long counter space and refrigerator/freezer with ice maker.

From wedding receptions and retreats to auctions, recitals and fundraisers, our versatile event spaces—all air conditioned—are beautiful, cost effective and include ample amenities to make your event truly special.

Contact Ann Hart, Events Manager
ahart@themadeleine.edu or call
the Parish Office at 503-281-5777

COMMUNITY, STEWARDSHIP, AND HOSPITALITY: THROUGH THE EYES OF LITURGY

Saturday April 30 • Old Church • No charge for Madeleine parishioners

A workshop sponsored by the Portland chapter of NPM (National Association of Pastoral Musicians).

Join us for a morning of renewal with Janet Sullivan Whitaker, including continental breakfast, Morning Prayer and a concluding ritual.



- ▶ **8:30-9:00 am**—Registration, continental breakfast
- ▶ **9:00 am Morning Prayer**
- ▶ **9:30am-Noon**—Workshop
- ▶ **Madeleine parishioners**—Madeleine parishioners admitted at no charge.
- ▶ **Cost for other groups**—\$20/person, \$100/parish group (5 or more)

In this springtime of returning to in-person ministry, pastoral musicians are called

to be a source of creative encouragement for those we serve. So much of what we believe, and share is formed and expressed in the liturgy. In this time of prayer and reflection for liturgical musicians, we will explore and affirm the aspects of our vocation that include community building, faithful stewardship, and Christian hospitality. Come and be filled!

About Janet Whitaker

Janet is a singer, teacher, pianist, and composer of music for the church in our world. Her music is published by OCP Publications in Portland OR, and GIA/WLP in Chicago, IL.

Her best-known songs include Here at This Table, In Every Age, This is Our Cry, The Least of These, Christ Before Us, and Day of Peace. Janet holds a BA in Music from CSU East Bay, and an M.T.S in Liturgical Theology from the Jesuit School of Theology at Berkeley.

Thanks to our sponsors and donors: Portland Chapter of the National Association of Pastoral Musicians (NPM), Church of the Madeleine, St Andrew Catholic Church, Oregon Catholic Press (OCP), The Catholic Sentinel, Sacred Liturgy Ministries, George Arrigotti, Laurel Freeborg, Tom LaVoie, Michael Prendergast and Ken Willett.

UNITED IN SPIRIT CLEAN-UP EVENT AT THE GROTTO

Sunday, May 22, Noon-2:30 pm

Join the interfaith group “United in Spirit” for an afternoon of neighborhood clean-up around The Grotto. Please park in The Grotto parking lot and meet there before heading out into the neighborhood. Water and snacks will be provided.

Sign up via SOLVE’s online portal at www.bit.ly/tmp-uis

Contact Sister Veronica Schueler for more details: vschueler@archdpdx.org

REGISTRATIONS OPEN: SESSIONS ARE FILLING UP!

- MAKE NEW FRIENDS AND LIFELONG MEMORIES
- ENJOY FUN ACTIVITIES IN THE OUTDOORS
- BUILD SELF-CONFIDENCE & LEADERSHIP SKILLS
- SCHOLARSHIPS AVAILABLE-APPLY ONLINE



Great childhood memories are made at Camp Howard!



NEW PROGRAM: CAMP PARENT VOLUNTEERS

- ENJOY TIME IN THE OUTDOORS
- SHARE YOUR GIFTS AS A CABIN COUNSELOR
- EARN CAMP SCHOLARSHIP FUNDS
- BE A PART OF OUR CAMP HOWARD STORY

LEARN MORE AT: CYOCAMPHOWARD.ORG

NOW HIRING SUMMER STAFF: CYOCAMPHOWARD.ORG/JOBS

NE Portland Catholic Parishes

ENVIRONMENTAL ENRICHMENT SERIES

Zoom presentations April 20–May 11

Northeast Portland Catholic parishes St. Charles, St. Andrew, Holy Redeemer and The Madeleine are pleased to announce our Environmental Enrichment Series, a series of nationally renowned speakers discussing critical climate and environmental topics.

Each 90-minute session, 6:30–8:00 pm, will be held via Zoom, and include the presentation, a Q & A opportunity, and breakout groups. All are welcome.

Then following the series on May 18, join us for a social and informational gathering in person!

Information and free registration at www.themadeleine.edu/ees



April 20—Katharine Hayhoe

Christians and Climate Change

Katharine is a nationally-renowned Climate Scientist, and professor and department chair of Public Policy and Public Law at Texas Tech University. She is also the Chief Scientist for The Nature Conservancy.



April 27—Marc Brune

Greening Buildings for Carbon Neutrality

Principal at PAE Engineers and Madeleine School parent, Marc is an internationally recognized leader in sustainable designs for built environments, and expert in mechanical engineering and energy modeling.



May 4—Rachel Wheeler, PhD

Ecospirituality

Dr. Wheeler is an Assistant Professor of Theology at University of Portland. In addition to teaching on the Bible, Christian spirituality, and spiritual practices, she has a particular interest in how people interpret their pro-environmental behavior as spiritual.



May 11—Kids Saving the Earth

Empowering and Mobilizing Youth

Kids for Saving Earth provides “education into action” environmental education curriculum to instructors including action projects, worksheets, music programs, art projects and more. Learn what you can do to empower Kids Saving the Earth.

May 18—Family Friendly Social Gathering

Join us 5:30–7:30 pm at St. Charles for a family-friendly social gathering, dinner, and information stations providing practical suggestions and resources for easily and mindfully adopting sustainable practices. Food catered by Santo Domingo Taqueria (donations gratefully accepted but not required), or feel free to bring your own picnic. **Please register so we know how many to expect.** St Charles is located at 5310 NE 42nd Avenue, Portland, Oregon 97218.



**All sessions provided free of charge,
but please register online at**

www.themadeleine.edu/ees

IN PARTNERSHIP WITH
St. Charles
St. Andrew
Holy Redeemer
PARISHES

The Madeleine Care for Creation ANNUAL E-WASTE RECYCLING EVENT

Sunday, April 24 • 9:00 am–1:00 pm

In conjunction with St. Charles, St. Andrew, and Holy Redeemer Parishes, The Madeleine Care for Creation Committee is pleased to announce our annual Earth Day E-Waste Recycling Event. The event is provided at no charge, but donations accepted to help cover costs.

Green Century Recycling will be on hand to accept the following

- ▶ Computers
- ▶ Laptops
- ▶ TV & Monitors (all types)
- ▶ Hard drives (Secure Data Destruction Provided)
- ▶ Misc. Computer Components (floppy drives, Printed Circuit Boards (PCB), etc.)
- ▶ Cords/Wires/Chargers/Power strips
- ▶ Servers/Switches
- ▶ Routers/Hubs/Modems
- ▶ Networking Devices
- ▶ Communications Equipment
- ▶ POS (Point of Sale equip)
- ▶ Printers/Scanners
- ▶ Fax/Copiers
- ▶ Keyboards/Mice
- ▶ Misc. Office Machines
- ▶ Misc. Electronics
- ▶ VCRs, DVD Players
- ▶ Cable & Satellite Equipment
- ▶ Testing Equipment
- ▶ Stereo/Audio Components
- ▶ Cell Phones (with or without batteries)
- ▶ PDAs, Handheld Games
- ▶ Cameras
- ▶ Telephones
- ▶ Gaming Consoles/Systems
- ▶ UPS (uninterruptible power supply) and other Lead Acid Batteries
- ▶ Small/Large Appliances (which include, microwaves, toasters, blenders, etc.)
- ▶ Electric Power Tools
- ▶ Laptop Batteries, Cell Phone Batteries, Li-on batteries
- ▶ Ferrous & Non-Ferrous Metals
- ▶ Air Conditioners

GREEN CENTURY RECYCLING
PULL THE PLUG ON ELECTRONIC WASTE.



Ridwell will accept clear #1 PET Plastic Clamshells at the event

Ridwell

We will collect worn-out athletic shoes to be ground up and re-purposed

(no dress or casual shoes, please)



The following items will NOT be accepted during this event.



- ▶ **NO!** Styrofoam
- ▶ **NO!** Fluorescent Tubes and lamps (All types)
- ▶ **NO!** Ink/Toner Cartridges
- ▶ **NO!** Household size batteries (AA, AAA, C, D, 9V, etc.)
- ▶ **NO!** Ni-CD & Ni-MH batteries
- ▶ **NO!** Media (CD, DVD, floppy, VHS, Cassette, tapes)
- ▶ **NO!** PCB Ballasts
- ▶ **NO!** Wood
- ▶ **NO!** Electronic & Magnetic Ballasts (Non-PCB only. Must be post 1978)
- ▶ **NO!** Refrigerators, Freezers, most water coolers, some dehumidifiers
- ▶ **NO!** Capacitors
- ▶ **NO!** Fire Extinguishers
- ▶ **NO!** Mercury Containing Devices (Thermostats, Ionization Smoke Detectors)



The Madeleine Parish Hall Driveway
3123 NE 24th Ave., Portland
www.themadeleine.edu/ewaste

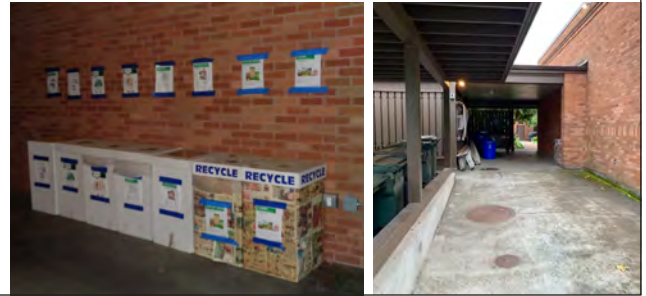
IN PARTNERSHIP WITH
St. Charles
St. Andrew
Holy Redeemer
PARISHES

RECYCLING PROGRAMS AT THE MADELEINE

Marked collection bins in the breezeway facing 23rd Ave.

The Madeleine's Laudato Si' Circle and Care for Creation Ministry have joined with U. S. based recycler, Terracycle, to offer our parish, school, and community opportunities to responsibly recycle specific items (primarily plastics) not generally handled at curbside. Terracycle has added more manufacturers to its program, and in turn, we have expanded our recycling offerings. Here is a current listing of what we are collecting. Please keep this in mind:

- ▶ Do not include garbage or items not specifically mentioned in the descriptions.
- ▶ Empty containers of contents. No need to wash first; ensure packaging is dry.



DISCONTINUED: STYROFOAM/ POLYSTYRENE

Regrettably, we can no longer accept Styrofoam and Polystyrene materials. Although endorsed by Metro, we have recently learned (through an independent report) of major violations by the local recycler in the responsible handling and recycling of these materials.

LATE JULY® SNACKS

All Late July® snack packaging as seen in these examples. Limited to Late July brand only.



GILLETTE® AND VENUS RAZORS AND RAZOR BLADES

All brands of blades and razors (systems and disposable units, and replaceable-blade cartridge units), rigid plastic packaging, and flexible plastic bag packaging.



BIC WRITING INSTRUMENTS AND PACKAGING

All brands of empty writing instruments, glue sticks, water-color dispensers, highlighters, paint sets, and flexible packaging.



METAL-BASED COOKWARE AND CUTLERY

All brands of metal-based cookware, bakeware and cutlery (non-stick Aluminum, Stainless Steel, Carbon Steel, Cast Iron). Please make sure items are thoroughly clean and dry.



ORAL CARE PRODUCTS

All brands of used or empty oral care products, including toothpaste tubes, tooth brushes, and dental floss containers.



SWIFFER REFILLS



Swiffer only brands of Sweeper™ Dry, Wet, and XL Refills, WetJet Refills™, and Duster™ Refills.

FOOD STORAGE

All brands of well-used plastic and glass food storage containers.



CIGARETTE BUTTS, SANTA FE NATURAL TOBACCO COMPANY

All brands of fully extinguished cigarettes (and ashes) and tobacco products, including filters, plastic packaging, inner foil packaging, rolling paper, and loose tobacco pouches.



OFFSITE RECYCLING OPPORTUNITIES FOR FAMILIES

REDYPER DISPOSABLE DIAPERS

Subscription service for purchasing and recycling Redyper brand disposable diapers through Terracycle

LOOP

Offers zero-waste packaging of everyday essentials (beauty, health and personal care, grocery, and household essentials) from leading brands (including Haagen-Dazs!) Details at www.loopstore.com

Details on all programs at
www.themadeleine.edu/terracycle

In Memoriam

THE MADELEINE FAMILY REMEMBERS

MICHAEL MASTERSON

A Funeral Mass will be held for longtime parishioner Michael Masterson on Friday, April 22, 1:00 pm at The Madeleine.

Michael John Masterson was born October 2, 1946 in Los Angeles, California, and died March 19, 2022 in Port Townsend, Washington. And what a life— so full of rich experiences, gifts, and thoughtfulness.

Michael attended Notre Dame High School in Sherman Oaks, California, then attended Gonzaga University for his undergraduate degree, and completed his higher education at Northwestern.

Michael spent many years working in advertising in the Los Angeles area. He interviewed many famous people like Bob Dylan, Joni Mitchell, and Judy Collins, and his lifelong friend, Michael Mullen, the Joint Chief of Staff under President Obama, to name a few. Michael was the former KNX News radio General Sales Manager and then became the Account Executive of the CBS Radio Spot in Los Angeles. He won many awards for his exemplary work. He shared numerous wonderful stories of the unique personalities he met over the years, and introduced many to great authors, musicians, and political figures.

Michael married Barbara, his wife of 45 years, in Manhattan Beach, California, with his uncle, Fr. Frank Masterson, officiating.

Michael is survived by his son Kevin, daughter Meagan, grandson Zachary, and his brother Sean. He is predeceased by his wife Barbara who died on October 26, 2019.

Michael was funny, faithful, loyal, very generous, a giver to many, and loved so many.

An avid sports fan, Michael followed his favorite golf, hockey, and tennis stars closely. Also he had a special fondness for the Gonzaga basketball teams—both women's and men's—which he shared with loved ones, checking in with them after each game.

Michael loved food, wine, seafood, sushi, and pies of any kind. He was a real “foodie” and knew exactly where to buy the best ingredients for dinner parties he and Barbara graciously hosted. Together, they visited many different countries, thoroughly deepening their appreciation for the food, language, and art of each destination.

Michael is an example of someone who talked about love, peace, justice, and service. He then lived these out in many ways through care for Barbara during her 17-year battle with cancer,



his love of family, his connections with so many friends, and his extraordinary compassion towards those in need.

Michael donated to many programs that served the less fortunate. Every year for over 15 years, Michael purchased candy at Easter and Halloween. He then helped to distribute gift packages to homeless children, battered women, people living with AIDS, the Downtown Chapel, and the Gang Academy which strives to help gang members leave that life behind.

Michael was deeply influenced in his faith, sense of justice and service to others, by his late aunt Sister Helen Masterson, a Holy Names nun, and by the Jesuits who also helped strengthen his love of debating any point of interest.

Our best tribute to Michael is to live life fully, to care for others, to be kind and generous, and to live out what we believe.

Please pray for Michael, his family, and all the faithfully departed from The Madeleine

EASTER

A JOURNEY TO EMMAUS

The story of the two disciples walking to Emmaus is the story of Easter in microcosm. The two disciples feel alone in the aftermath of Christ's death and perhaps abandoned by the God who allowed such an incomprehensible injustice. Soon they are joined by a stranger who explains the scriptures to them. As they talk, they feel a sense of bonding and hope, but they do not yet recognize the Lord. Finally, when they stop for a meal, their eyes are opened in a eucharistic experience, "We knew him in the breaking of the bread."



The story of Emmaus is also the story of the Church. The deep sense of absence felt by the two disciples is dramatically filled by the risen Lord: "Were not our hearts burning within us while he was talking to us on the road?" Yet, that visible presence is short-lived: "He vanished from their sight." Hindsight affords us the luxury of knowing the clear eucharistic import of this disappearance. As the risen Lord "vanishes" from physical earthly existence, we become the body of Christ on earth. The community of faith remembers the Lord who makes himself present and visible again when we celebrate the Eucharist and go out to witness the good news.



THE EASTER SEASON

Easter for Christians is not just one day, but rather a 50-day period. The season of Easter, or Eastertide, begins at sunset on the eve of Easter and ends on Pentecost, the day we celebrate the gift of the Holy Spirit and the birth of the Church.

Easter is also more than just an extended celebration of the resurrection of Jesus. In the early church, Lent was a season for new converts to learn about the faith and prepare for baptism on Easter Sunday. The initial purpose of the 50-day Easter season was to continue the faith formation of new Christians.

Today, this extended season gives us time to rejoice and experience what it means when we say “Christ is Risen.” It’s the season when we remember our baptisms and recognize that through this sacrament we are incorporated into Christ’s mighty acts of salvation.

Alleluia!

From the “great Alleluia!” at the Easter Vigil through the end of the Easter season at Pentecost, “Alleluia!” is the signature chant for the Easter celebration. “These above all others are the days for the singing of the Alleluia!,” says the U.S. Bishops’ Committee on the Liturgy.

Indeed, on most days of the year, the festive Easter acclamation “Alleluia!” is used—the only exception is in Lent. “We are an Easter people and “Alleluia!” is our song,” is Augustine’s oft-quoted phrase.

Alleluia! (from the Hebrew *hallelujah* meaning “Praise God”) appears frequently in the Psalms, and in the early Church became part of the liturgy. In Chapter 19 of Revelation, “Alleluia!” is the first and the last word of the glorious “heavenly liturgy” coming from the mouths of the “great multitude” (19:1, 6), and “the twenty-four elders and the four living creatures” (19:4).

The double “Alleluia!” with its ancient chant that closes the Mass in the Easter season is hauntingly beautiful to many who hear it for the first time.

“Alleluia!” is the refrain in most traditional Easter hymns, including the rousing “Jesus Christ is risen today.” The “Alleluia!” is part of all Sunday and daily Masses (except in Lent) by virtue of the Alleluia or Gospel Verse. “Alleluia! Alleluia!” is sung before a short Scripture text suggesting the theme of the upcoming Gospel is sung; then a final “Alleluia!” is sung.

THE HISTORY OF EASTER

Easter is the celebration of Christ’s resurrection, the culmination of Christ’s mission and the foundation of our faith. Easter is also the oldest Christian holiday, one that Pope Leo I regarded as the greatest feast of the liturgical year, a conviction that has since been widely embraced. As St. Paul wrote, “If Christ has not been raised, then your faith has been in vain” (1 Cor 15:14).

St. Bede suggests that word *Easter* could be related to *Estre*, an ancient goddess of spring. The more common term for Easter was the Latin *Pasch* or Passover. Easter was the *Festa Paschalia*, a name that is plural because Easter is not just a one-day event but includes seven more days of celebration (called the Easter octave). The name *Easter* is also related to the German word for east, *ostern*, where the sun rises. So the associations of light from the rising sun and the new life of spring naturally carry over to our celebration of new life through Christ.

The fixing of the date of Easter was complex and somewhat controversial. To the members of the early Church, every Sunday was regarded as a celebration of the resurrection. When it was determined to single out one day to highlight the feast, there was disagreement as to the proper date. Some Christians, including St. Irenaeus and St. Polycarp, felt it should coincide with the Jewish Passover, which was determined by the lunar calendar, while others preferred the Sunday celebration date that eventually prevailed when the Council of Nicaea in AD 325 determined that Easter is to be celebrated on the first Sunday following first full moon that occurs on or after the spring (vernal) equinox.




Timmco
INSURANCE

Brian Timm
Susan Ames | Derek Ames

1615 NE Broadway | 503-288-8818
www.timmco.com

AUTO | HOME | BUSINESS | LIFE

TIM WALTERS 

Principal Broker

The most trusted name in Real Estate!

Committed to the NE Portland

Neighborhoods since 1991



Mark McGinnis

Parishioner, Parent
Mortgage Advisor



NMLS 98586
971-300-0484
mark.mcginis@sPMC.com
"It's about service!"




Soccer Camp
Bernie Fagan
EST. 1983

T.C. O'LEARY'S
a little irish
PUB

2926 NE Alberta Street
A little taste of Ireland!



Parishioners Tom, Siobhan & Aine O'Leary

JOHN M. WYNN
ATTORNEY AT LAW
McGill, Kapranos & Wynn
Parishioner



Hollywood Professional Center, 3939 NE Hancock St., Ste. 305
jmwpxd@qwestoffice.net • 503-287-7333


LANCE MARRS

PRINCIPAL BROKER
503.701.5323
PORTLAND MODERN REAL ESTATE
LICENSED IN OREGON
PORTLANDMODERN.COM



PAUL MARRS

MORTGAGE LOAN OFFICER NMLS ID #5212
O:503.781.2114 B:503.994.8559
PMARRS@CANOPYMORTGAGE.COM
CANOPYMORTGAGE.COM/PAULMARRS
CANOPY MORTGAGE



Beaverton Branch Canopy Mortgage, LLC 12655 SW Center Street Beaverton OR 97005 NMLS ID #1359687

JOSÉ MESA AUTO WHOLESALE, LLC
"The mobile auto dealer who is always in your neighborhood."
YOUR DISCOUNT AUTO RETAILER SINCE 1992!
sales@josemesa.com 503-789-0438 www.josemesa.com
NEW • USED • BUY • SELL • LEASE • TRADE • CONSIGN • BROKER • APPRAISE



Dr. Phil Doleac, PC
Orthodontics for all ages
www.magic-smiles.com

Beaverton Portland Scappoose
503.644.7009 503.255.1694 503.543.4488

BUY OR SELL

OUR TEAM CAN HELP!



Opt.
REAL ESTATE

JEFF KERSTEN
REALTOR®
503.720.9179
jeff@theopt.com



Retrouvaille
A Christian Peer Ministry
A LIFELINE FOR
HURTING MARRIAGES

Is your marriage tearing you and your family apart?
Weekends held every February, June & October at Mt. Angel Retreat Home
www.helpourmarriage.com
503-704-7382
Donated by Kevin & Carol McMenamin

DOSIER CONSTRUCTION

Kitchen & Bathroom Remodels
503-985-9982
Austin Dosier, Parishioner
dosierconstruction@gmail.com OR CCB 215259

ANNE C. STEINER
ESTATE PLANNING
ELDER LAW ATTORNEY
503.946.8361 • 1915 NE Cesar Chavez Blvd.
PARISHIONER - anne.c.steiner@gmail.com
WILLS - TRUSTS - PROBATE
GUARDIANSHIP - CONSERVATORSHIP



Beaumont Vision:
providing full-service eyecare for all ages, including comprehensive exams, glasses and contacts

Dr. Ann R. Lewis
Ship by to view our unique eyewear
Most insurances accepted!

4331 NE Fremont St
Ph: 503-331-3937

JOHN W. LOBO PAINTING

Custom Interior & Exterior
Creative Finishes
503-969-3337 CCB#89027
Licensed Bonded Insured



Sweetly Aimee, LLC
Custom Wedding and All-Occasion Cakes and Desserts

Aimee Holzschuh
Parishioner & Parent
503.998.7368
www.SweetlyAimee.com



PAUL MYERS, Ph.D., LLC
PSYCHOTHERAPY, COUNSELING & CONSULTING SERVICES
(503) 381-6685 paulmyersphdpdx@gmail.com
www.paulmyersphdpdx.com



THEORY MORTGAGE

Beating Banks Daily

Brian DuVal
503-850-7667
NMLS 5912, NMLS 1848246



Ashley
REALTY WORKS TEAM

PARISHIONERS, NEIGHBORS, EXPERT REALTORS

Wick & Karoline Ashley
karoline@ashleyrealtyworks.com
(503) 819-4851
237 NE Broadway Suite 100




CITY HOME IMPROVEMENT, Inc.

Kitchens | Bathrooms | Additions
Since 1956

Please visit our showroom or call for a free in-home estimate


503-253-7591

www.cityhomeimprovementinc.com
8811 NE Sandy Blvd. Portland, OR 97220



WILLAMETTE FINANCIAL ADVISORS, LLC
PERSONALIZED ADVICE FROM TRUSTED ADVISORS


James M Jones
Financial Advisor, CFP®
Parishioner
Direct 503.284.9200
Office 503.7470306
jimj@wfinadv.com

Whole house remodels
• Kitchens • Bathrooms
• Basements • Additions
In-house architecture & design

Nathalie Roloff, Parishioner

503.245.0685
rolloffconstruction.com
4300 NE Fremont #130
CCB #140721
WA#ROLOFC1873KU



ROLOFF CONSTRUCTION