

This Week at The Madeleine

Furthering the Reign of God, Where All Are Welcome • April 9-10, 2022

Lent, Triduum & Easter 2022 at The Madeleine

Rice Bowls

Return on Holy Thursday

Our annual collection for Catholic Relief Services. Return your bowl to the church on Holy Thursday, or no later than April 30.

Stations of the Cross for Ukraine

Monday, April 11 † 6:30 pm

In the Old Church

Adoration

Tuesdays, April 12 † 9:00 am

Chrism Mass

Monday, April 11 † 7:00 pm, St. Mary's Cathedral

Tenebrae

Friday, April 15 † Noon, Main Church

Beautiful liturgy meditates on Christ's suffering.

Triduum & Easter Services

All services in-person. Livestreams as noted.

Holy Thursday † April 14, 6:30 pm –Evening

Mass of the Lord's Supper **+LIVESTREAM**

Good Friday † April 15, 6:30 pm –Celebration

of the Lord's Passion **+LIVESTREAM**

Easter Vigil † April 16, 8:30 pm –

Vigil in the Holy Night of Easter

Easter Sunday † April 17

8:00 am–Mass

10:00 am–Mass **+LIVESTREAM**

– Easter Egg Hunt in the Courtyard following

10:00 am Mass. See complete event details on

Page 2.

STATIONS OF THE CROSS FOR UKRAINE/RUSSIA

You are invited to join in praying the Stations of the Cross in the Old Church on Monday, April 11 at 6:30 pm. I will be using a special script planned for prayer for Ukraine/Russia. I am adding this to our Lenten prayer as a way of coming together and holding this painful situation in our Holy Week prayer.

—Therese Fenzl

BELLS FOR HOLY THURSDAY

For those attending Holy Thursday Mass (everyone, we hope!), you are encouraged to bring bells (or keys) to ring during the Gloria.

This is the first time we will be singing the Gloria since the start of Lent, and the last time until the Easter Vigil. Let us loudly ring in this beautiful celebration of the institution of the Holy Eucharist.

Thank you!

Inside this week's bulletin:

- ▶ **RCIA**—Be sure to join us for Easter Vigil on Saturday night, 8:30 pm, as we initiate our three new Candidates into the Catholic Church. Page 2
- ▶ **Music Notes**—From Maria, a masterpiece, *The Triduum—A Religious Concerto*. Page 3
- ▶ **Environmental Corner**—Pages 6–9 have a variety of Care for Creation based information, including two important events, our expanded recycling program, and our Blue Sky Renewable Energy Program certificate from Pacific Power.

Passion (Palm) Sunday

JESUS IS ABOUT TO DIE, and he knows it, but he is most concerned with keeping his friends safe. He knows they will desert him when he needs them most. Even so, Jesus tells them what's going to happen because they are his friends and he loves them.

The Gospel is an opportunity for us to sympathize with Jesus. If your best friends stopped talking to you in the middle of a time you were going through a personal tragedy, would you still reach out to them? Would you forgive them? Or would you blame them for not having the strength to accompany you through your loss? There is a deep tenderness in these friendships that exemplify Jesus' depth of fraternal love for his friends.

PRAY FOR OUR FAITHFULLY DEPARTED

- ▶ Michael Masterson
- ▶ Ed Kraus
- ▶ Jared Gorsky
- ▶ Maureen DeLany

PRAYER REQUESTS

For those who are ill, or in need of our prayers

- ▶ Marty Foster
- ▶ Lisa Nice
- ▶ Kevin McMenamin
- ▶ Beth Wills
- ▶ Bill Rooney

WORSHIP & PRAYER

- 04/12, Tues. Lisa Nice
- 04/13, Weds Mira Neiman
- 04/14, Thurs. Margaret Jane Brown †
- 04/15, Fri. No Intention on Good Friday
- 04/16, Sat. Virginia Henry
- 04/17, Sun. 8:00 am . . . The Madeleine Community
- 10:00 am Bill Rooney

Calendar This Week

All Masses in person only unless noted

SUNDAY, APRIL 10

► Palm Sunday

8:00 am: Mass—Church

9:00 am: Confirmation Interviews—Rectory

9:00 am: Confirmation Class—Fireside Rm

10:00 am: Mass—Church  **ALSO LIVESTREAMS**

11:00 am: Confirmation Rehearsal—Church

MONDAY, APRIL 11

5:30 pm: Chimes, Choir with Brass—Church

6:30 pm: FA—Fireside Rm

6:30 pm: Stations of the Cross for Ukraine—Old Church

7:00 pm: Chrism Mass—Cathedral

TUESDAY, APRIL 12

► Nourish Our Neighbors Gr. 6

8:00 am: Mass—Church

9:00 am: Adoration—Church

WEDNESDAY, APRIL 13


8:00 am: Mass—Church

2:30 pm: Children's Choir Rehearsal

6:30 pm: Pastoral Council—Zoom

7:00 pm: Madeleine Choir Rehearsal


THURSDAY, APRIL 14

6:30 pm: Evening Mass of the Lord's Supper—Church  **ALSO LIVESTREAMS**

FRIDAY, APRIL 15

► Good Friday—School 11:30 Dismissal

12:00 pm: Tenebrae—Church

6:30 pm: Celebration of the Lord's Passion—Church  **ALSO LIVESTREAMS**

SATURDAY, APRIL 16

8:30 pm: Easter Vigil Mass

11:00 pm: RCIA Reception—St. Catherine Rm

SUNDAY, APRIL 17

► Easter Sunday

8:00 am: Mass—Church

10:00 am: Mass—Church  **ALSO LIVESTREAMS**

11:30 am: Easter Egg Hunt and Easter Reception—Parish Hall

ARCHBISHOP SAMPLE AT THE MADELEINE

Town Hall—April 27, 6:30. Archbishop Sample will be on hand for a Town Hall discussion with parishioners in our Old Church.

Mass—May 1, 10:00 am, Archbishop Sample will celebrate Mass at The Madeleine!

RCIA 2022

Fast, pray and journey as one community with our Candidates



Heather

Kevin

Mark

We invite you to participate in the Triduum with our RCIA Candidates this week. During the Easter Vigil, rejoice with Kevin, Mark, and Heather as they make their Profession of Faith, are confirmed, and then join us for the first time at the Eucharistic table. Celebrate with us at the Reception following the Vigil as we welcome our newest Catholics.

PARISH LIFE

ARCHBISHOP SAMPLE TO VISIT THE MADELEINE

Town Hall, April 27 • Mass, May 1

Archbishop Sample will be making an official visit to The Madeleine, with two events open to all parishioners.

► **Town Hall, April 27, 6:30 pm**—Archbishop Sample will hold a Town Hall meeting with parishioners in our Old Church. This will be an unprecedented opportunity to hear directly from the Archbishop and to raise issues or concerns you may have,

or to hear what he has planned for the Archdiocese.

► **Mass, May 1, 10:00 am**—For the first time in his tenure, Archbishop Sample will celebrate a Sunday Mass at The Madeleine! It will be a very special liturgy, which will also debut our 2022 Mother's Day video...we hope everyone will attend.

THE 2022 PARISH EGG HUNT WILL HAVE A NEW SPIN ON IT

This year the Easter Bunny is stepping up his game...so bring your best hunting skills. Eat lots of carrots so like all good bunnies—your eyes will be laser-focused on finding the goodies he has hidden.

► **When**—The egg hunt will follow Sunday's 10:00 am Easter Mass and commence 20 minutes after it ends.

► **Where**—We will be hunting for eggs in the

Courtyard, behind the Parish Office.

► **What to know:**—Kids will be searching for specific colored eggs in one of three age groups: Ages 3-5, Ages 6-9, Ages 10-13

► **What else to be excited about (other than Jesus' resurrection, of course)**—Several eggs will contain special tokens which can be redeemed for a grand prize in each age category.



Today is Palm Sunday and the beginning of the holiest of Christian weeks. Let us pray for the grace to take up our own cross and to follow Jesus through death to new life. As you give gifts to St. Vincent de Paul, know that you are a sign of God's love to those who carry their cross of suffering and pain.

—Mary Clare O'Brien, 503-309-7639

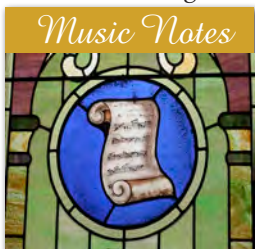
THE TRIDUUM— A RELIGIOUS CONCERTO

As a musician, playing a Concerto (that is, a musical piece for soloist and orchestra) represents a significant achievement in the world of classical music. Several years ago, I had the opportunity to play one of my favorite pieces in the piano repertoire—the Beethoven Triple Concerto with the Dubrovnik Symphony Orchestra (DSO) in Croatia. Sometimes referred to as a “Piano Trio with Orchestra,” this Concerto is unique in that Beethoven wrote it for not one, but THREE soloists—piano, violin and cello. Suffice to say, there is a lot going on! In this instance, although we didn’t all speak the same verbal language (a mix of Croatian, Russian and English), we relied on the language of music (and Michael, who was conducting) for a performance that was both artistically rewarding and just plain FUN!

A Concerto typically consists of three separate movements (or parts)—fast/slow/fast, respectively. Each movement takes on a particular mood and characteristic, and is connected by thematic material, keys, and other similar musical threads. Towards the end of the last movement is a musical “cadenza,” when the soloist(s) essentially summarizes the major themes in a virtuosic manner. So, while it is possible to play just one movement in a performance, it is really meant to be one gigantic piece of music!

As we approach Holy Week, you might say that the Triduum (the three liturgies before Easter) is, in effect, a Religious Concerto. Much like a musical concerto represents an artistic milestone, the Triduum is the summit of our liturgical year and our life as Christians. As the name implies, the Triduum consists of three main “movements”—or liturgies—which are connected by the themes of Christ’s life, death and resurrection. Similar to the first movement of a concerto which is often stately and has two

or more melodic themes, Holy Thursday begins with powerful themes of love and service and is full of ritual—such as the washing of the feet and the act of the Last Supper. Thematically, this liturgy links us to the greatest act of love and service in our lives—that of the Passion of Christ on Good Friday. In form and character, Good



Friday is similar to the second movement of a concerto—that is, a stark contrast in tempo and style, and often of a pensive, solemn character with great beauty. The sole focus of Good Friday is the solemnity of Jesus’s death on the cross—all of which points us towards the Easter Vigil—the third and final movement in this “Religious Concerto.” The Easter Vigil combines the themes of Light, Baptism, Eucharist, and the Resurrection of Christ in one glorious, beautiful and dramatic liturgy. It begins with the Exsultet, (sung prayer), which can be considered the spiritual “cadenza” of the Triduum. It is a majestic sung proclamation of the Resurrection of Christ—inviting all of heaven, earth, and the Church to rejoice (“exult”) in this feast. As a tour de force of chant, the Exsultet is similar to a musical cadenza as it requires virtuosity, stamina and substance. As a whole, the Easter Vigil encapsulates the source and summit of our life as Christians. Like the final movement of a concerto, it is often longer (there are, after all seven readings as well as Baptisms & Confirmations), elaborates on the thematic material and builds to unending joy at its conclusion.

So, while playing the Beethoven Triple may be a musical achievement, it is nothing compared to the spiritual rewards of attending the triple liturgies of the Triduum. And what about Easter morning? That is the encore, of course—the perfect finale to the most glorious Religious Concerto ever written!

—Maria Manzo

MADELEINE BOOK CLUB

MBC cordially invites you to join our group of enthusiastic readers. We are happy to once again be meeting in person for our monthly gatherings.

In mid-April we will be discussing Pope Francis’ book, *Let Us Dream: The Path to a Better Future*.

Francis sketches a transformative vision

of society that reorients neoliberal priorities toward considerations of human dignity and the common good. Driving his argument is his conviction that the COVID-19 pandemic is an opportunity for change.

For more information, contact Gretchen Stevenson by phone at 503-312-6834 or email to gypsyfrau47@yahoo.com

WEEKLY MASS TIMES

Masses:

Tuesday, Wednesday, Friday 8:00 am
Thursday (During School) 2:00 pm
Saturday Vigil 5:00 pm
Sunday 8:00 am, 10:00 am
Contemplative Mass . . . last Sunday of each month
6:00 pm Old Church

Notes:

▶ Livestream 10:00 am Sunday
at youtube.com/themadeleineparish

Penance By appointment; call Parish Office

PARISH OFFICE

Hours Monday–Friday, 10:00 am–3:00 pm

Phone: 503-281-5777 **Fax:** 503-281-0673

School Office 503-288-9197

PARISH STAFF

Rev. Mike Biewend—Pastor
fathermike@themadeleine.edu ext. 111

Deacon Mike O’Mahoney—Permanent Deacon
deaconmike@themadeleine.edu

Carol Glasgow—School Principal
cglasgow@themadeleine.edu . . . 503-288-9197

John Garrow—Business Manager
jgarrow@themadeleine.edu ext. 118

Darlene Maurer—Pastoral Assistant
dmaurer@themadeleine.edu ext. 125

Therese Fenzl—Director of Spiritual Ministries
tfenzl@themadeleine.edu ext. 116

Maria Manzo—Director of Music
mmanzo@themadeleine.edu ext. 113

Ann Hart—Events Manager
ahart@themadeleine.edu

Allison Blakemore—Bookkeeper
ablakemore@themadeleine.edu ext. 119

Mary Prusso—Registration
mprusso@themadeleine.edu ext. 112

Julie Kupers—Special Events
jkupers@themadeleine.edu . . . 720-936-5635

Janeen Reilly—Parish Administrator
jreilly@themadeleine.edu ext. 110

Terry Silva—Facilities Support
tsilva@themadeleine.edu ext. 117

Rich Hammons—Director of Communications
rhammons@themadeleine.edu ext. 129

SACRAMENTS

Marriages, Funerals, Anointing of the Sick—Fr. Mike ext. 111

Infant Baptism—Darlene Maurer ext. 125

First Reconciliation, First Eucharist—Rose Horton ext. 127

RCIA—Christi Bohmbach, rcia@themadeleine.edu

Confirmation—Fr. Mike ext. 111

COUNCILS & CONTACTS

Pastoral Council—Meg Scharle

Finance Council—Jim Jones 503-284-3301

Buildings & Grounds—Erin Couch . . . 503-281-9575

School Advisory—Eric Robinson 971-227-3772

Facility Requests—themadeleine.edu/facilities

Maintenance Requests—John Garrow
jgarrow@themadeleine.edu ext. 118

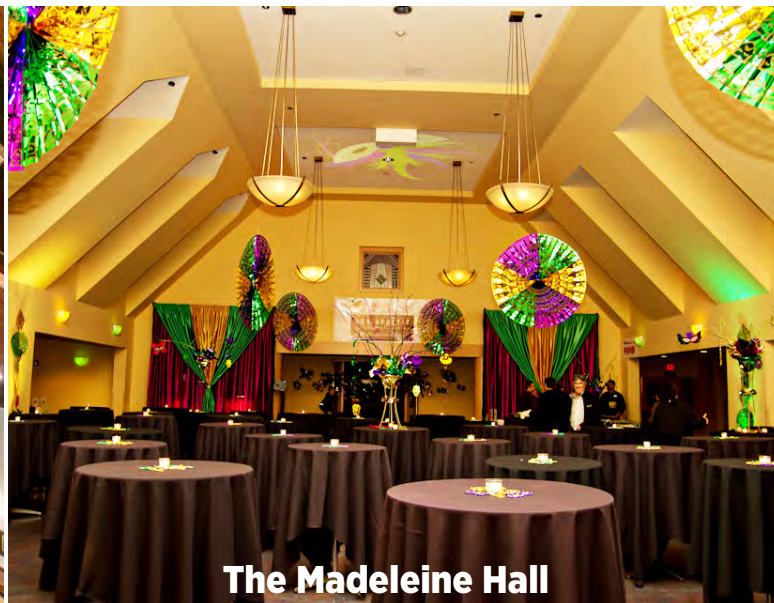
Bulletin submissions due 5:00 pm Tuesday

Email to bulletin@themadeleine.edu

Event spaces at The Madeleine are **booking up fast!** Call us today



The Old Church



The Madeleine Hall



St. Catherine Room



Fireside Room



If you have events in the planning stages, we invite you to consider The Madeleine as your venue. But do it quickly! We are booking weddings, concerts, recitals, meetings and more well into the fall already! If you have an upcoming event, contact us right away.

The Madeleine Hall

Whether dressed up for a formal gala, decorated for a dance, or setup for a professional dinner, The Madeleine Hall is our largest and most versatile space. The high, gabled ceiling adds a majestic aire, but the unique configuration retains an intimate feel. The fully equipped commercial kitchen is directly adjacent for event food that needs warm up or assembly, or to cook an entire meal.

The Fireside Room

On its own, The Fireside Room is a warm, cozy space for meetings, talks, recitals and small banquets. It seamlessly pairs with The Madeleine Hall for larger events or as a social area or silent auction space.

The Old Church

After undergoing a thoughtfully spectacular \$4.1 million renovation, **The Old Church at The Madeleine** is available for events from 20 to 200 people in a breathtaking, historic setting.

This beautiful space offers brand-new convenience and comfort with an historic 1911 aesthetic.

St. Catherine Room

This beautiful fellowship room, regaled with historically restored stained glass, is ideal for meetings, seminars or combined with The Old Church for larger events. Includes a sink, long counter space and refrigerator/freezer with ice maker.

From wedding receptions and retreats to auctions, recitals and fundraisers, our versatile event spaces—all air conditioned—are beautiful, cost effective and include ample amenities to make your event truly special.

Contact Ann Hart, Events Manager
ahart@themadeleine.edu or call
the Parish Office at 503-281-5777

CELEBRATE MOTHERS IN MAY!

Upload mother & child photos to www.themadeleine.edu/mothers

A May tradition at The Madeleine: celebrating the Month of Mary and Mother's Day in a special way!

Each weekend beginning May 1, we will show a slideshow of mothers and children sent in from The Madeleine Community. The photos will show both in the church at 10:00 am Sunday Mass and on our livestream.

We are starting over—all new photos!

This year, again, we're making a fresh start, a blank canvas. So even if you've sent us a photo before, please send a new one



this year.

Submissions can be either a photo of mother and child (children), or a photo of mothers and their mothers. Please send us

just one photo of a mother/child combo per family, grouping as we want to have time to show all our photos.

Send photos by April 27

Upload your photos to our website at www.themadeleine.edu/mothers

If you have only a photo print, bring it to the Parish Office during work hours (label it with your name and phone number). We will scan it and leave it for you to pick up.

Help us to honor all mothers and those from our community, as well as Mary, the Mother of God, in this very special way!

EASTER GIVING: PLEASE CHECK YOUR MAILBOX

It's so exciting to see that we are carefully, slowly, prudently regaining some sort of post-pandemic normalcy....and we hope to see everyone flocking back for Holy Week and Easter Masses. We are humbled and gratified at the strong support that you, our parishioners, have continued to offer the past two challenging years.

One of our biggest collections of the year is typically Easter Sunday. Each year we budget for an Easter collection that is in addition to the Sunday collection.

In the mail last week, you likely received a letter asking for your support of our Easter collection.

Some parishioners account for Easter collections in regular online or automated giving. But if you are not among those who do, we'd very much appreciate that you might consider an additional Easter gift.

We have three easy ways for you to help:

- ▶ **Envelope**—If you have an Easter envelope, mail to the Parish Office or drop it off, or bring it to any Mass you may be attending.
- ▶ **Online**—Visit our online giving page at www.themadeleine.edu/parishgiving where you can click to our secure online payment site.
- ▶ **Electronic Transfer**—If you are making stewardship donations via electronic transfer, contact our bookkeeper, Allison Blakemore, to arrange an additional payment.

Thank you for your loyal support.

**Madeleine
Fiesta**
Friday, May 6 ~ 5:30 pm

Tickets: www.themadeleine.edu/fiesta

\$20 per adult
\$10 kids age 10 & under

Taco Bar/ Taquitos
Live Music • Margaritas
Beer & Wine • Raffle
Fun, games & activities for the kids... Silent disco, face painting and more

We need volunteers!
Contact Julie Kupers,
jkupers@themadeleine.edu

NE Portland Catholic Parishes

ENVIRONMENTAL ENRICHMENT SERIES

Zoom presentations April 20–May 11

Northeast Portland Catholic parishes St. Charles, St. Andrew, Holy Redeemer and The Madeleine are pleased to announce our Environmental Enrichment Series, a series of nationally renowned speakers discussing critical climate and environmental topics.

Each 90-minute session, 6:30–8:00 pm, will be held via Zoom, and include the presentation, a Q & A opportunity, and breakout groups. All are welcome.

Then following the series on May 18, join us for a social and informational gathering in person!

Information and free registration at www.themadeleine.edu/ees



April 20—Katharine Hayhoe

Christians and Climate Change

Katharine is a nationally-renowned Climate Scientist, and professor and department chair of Public Policy and Public Law at Texas Tech University. She is also the Chief Scientist for The Nature Conservancy.



April 27—Mark Brune

Greening Buildings for Carbon Neutrality

Principal at PAE Engineers and Madeleine School parent, Marc is an internationally recognized leader in sustainable designs for built environments, and expert in mechanical engineering and energy modeling.



May 4—Rachel Wheeler, PhD

Ecospirituality

Dr. Wheeler is an Assistant Professor of Theology at University of Portland. In addition to teaching on the Bible, Christian spirituality, and spiritual practices, she has a particular interest in how people interpret their pro-environmental behavior as spiritual.



May 11—Kids Saving the Earth

Empowering and Mobilizing Youth

Kids for Saving Earth provides “education into action” environmental education curriculum to instructors including action projects, worksheets, music programs, art projects and more. Learn what you can do to empower Kids Saving the Earth.

May 18—Family Friendly Social Gathering

Join us 5:30–7:30 pm at St. Charles for a family-friendly social gathering, dinner, and information stations providing practical suggestions and resources for easily and mindfully adopting sustainable practices. Food catered by Santo Domingo Taqueria (donations gratefully accepted but not required), or feel free to bring your own picnic. **Please register so we know how many to expect.** St Charles is located at 5310 NE 42nd Avenue, Portland, Oregon 97218.



All sessions provided free of charge,
but please register online at

www.themadeleine.edu/ees

IN PARTNERSHIP WITH
St. Charles
St. Andrew
Holy Redeemer
PARISHES

The Madeleine Care for Creation ANNUAL E-WASTE RECYCLING EVENT

Sunday, April 24 • 9:00 am–1:00 pm

In conjunction with St. Charles, St. Andrew, and Holy Redeemer Parishes, The Madeleine Care for Creation Committee is pleased to announce our annual Earth Day E-Waste Recycling Event. The event is provided at no charge, but donations accepted to help cover costs.

Green Century Recycling will be on hand to accept the following

- ▶ Computers
- ▶ Laptops
- ▶ TV & Monitors (all types)
- ▶ Hard drives (Secure Data Destruction Provided)
- ▶ Misc. Computer Components (floppy drives, Printed Circuit Boards (PCB), etc.)
- ▶ Cords/Wires/Chargers/Power strips
- ▶ Servers/Switches
- ▶ Routers/Hubs/Modems
- ▶ Networking Devices
- ▶ Communications Equipment
- ▶ POS (Point of Sale equip)
- ▶ Printers/Scanners
- ▶ Fax/Copiers
- ▶ Keyboards/Mice
- ▶ Misc. Office Machines
- ▶ Misc. Electronics
- ▶ VCRs, DVD Players
- ▶ Cable & Satellite Equipment
- ▶ Testing Equipment
- ▶ Stereo/Audio Components
- ▶ Cell Phones (with or without batteries)
- ▶ PDAs, Handheld Games
- ▶ Cameras
- ▶ Telephones
- ▶ Gaming Consoles/Systems
- ▶ UPS (uninterruptible power supply) and other Lead Acid Batteries
- ▶ Small/Large Appliances (which include, microwaves, toasters, blenders, etc.)
- ▶ Electric Power Tools
- ▶ Laptop Batteries, Cell Phone Batteries, Li-on batteries
- ▶ Ferrous & Non-Ferrous Metals
- ▶ Air Conditioners

GREEN CENTURY RECYCLING
PULL THE PLUG ON ELECTRONIC WASTE.



Ridwell will accept clear #1 PET Plastic Clamshells at the event

Ridwell

We will collect worn-out athletic shoes to be ground up and re-purposed

(no dress or casual shoes, please)



The following items will NOT be accepted during this event.



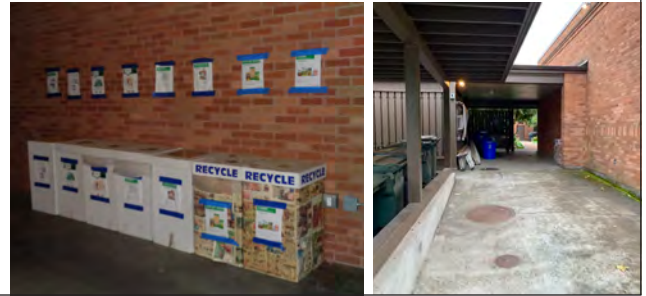
- ▶ **NO!** Styrofoam
- ▶ **NO!** Fluorescent Tubes and lamps (All types)
- ▶ **NO!** Ink/Toner Cartridges
- ▶ **NO!** Household size batteries (AA, AAA, C, D, 9V, etc.)
- ▶ **NO!** Ni-CD & Ni-MH batteries
- ▶ **NO!** Media (CD, DVD, floppy, VHS, Cassette, tapes)
- ▶ **NO!** PCB Ballasts
- ▶ **NO!** Wood
- ▶ **NO!** Electronic & Magnetic Ballasts (Non-PCB only. Must be post 1978)
- ▶ **NO!** Refrigerators, Freezers, most water coolers, some dehumidifiers
- ▶ **NO!** Capacitors
- ▶ **NO!** Fire Extinguishers
- ▶ **NO!** Mercury Containing Devices (Thermostats, Ionization Smoke Detectors)

RECYCLING PROGRAMS AT THE MADELEINE

Marked collection bins in the breezeway facing 23rd Ave.

The Madeleine's Laudato Si' Circle and Care for Creation Ministry have joined with U. S. based recycler, Terracycle, to offer our parish, school, and community opportunities to responsibly recycle specific items (primarily plastics) not generally handled at curbside. Terracycle has added more manufacturers to its program, and in turn, we have expanded our recycling offerings. Here is a current listing of what we are collecting. Please keep this in mind:

- ▶ Do not include garbage or items not specifically mentioned in the descriptions.
- ▶ Empty containers of contents. No need to wash first; ensure packaging is dry.



DISCONTINUED: STYROFOAM/ POLYSTYRENE

Regrettably, we can no longer accept Styrofoam and Polystyrene materials. Although endorsed by Metro, we have recently learned (through an independent report) of major violations by the local recycler in the responsible handling and recycling of these materials.

LATE JULY® SNACKS

All Late July® snack packaging as seen in these examples. Limited to Late July brand only.



GILLETTE® AND VENUS RAZORS AND RAZOR BLADES

All brands of blades and razors (systems and disposable units, and replaceable-blade cartridge units), rigid plastic packaging, and flexible plastic bag packaging.



BIC WRITING INSTRUMENTS AND PACKAGING

All brands of empty writing instruments, glue sticks, water-color dispensers, highlighters, paint sets, and flexible packaging.



METAL-BASED COOKWARE AND CUTLERY

All brands of metal-based cookware, bakeware and cutlery (non-stick Aluminum, Stainless Steel, Carbon Steel, Cast Iron). Please make sure items are thoroughly clean and dry.



ORAL CARE PRODUCTS

All brands of used or empty oral care products, including toothpaste tubes, tooth brushes, and dental floss containers.



SWIFFER REFILLS



Swiffer only brands of Sweeper™ Dry, Wet, and XL Refills, WetJet Refills™, and Duster™ Refills.

FOOD STORAGE

All brands of well-used plastic and glass food storage containers.



CIGARETTE BUTTS, SANTA FE NATURAL TOBACCO COMPANY

All brands of fully extinguished cigarettes (and ashes) and tobacco products, including filters, plastic packaging, inner foil packaging, rolling paper, and loose tobacco pouches.



OFFSITE RECYCLING OPPORTUNITIES FOR FAMILIES

REDYPER DISPOSABLE DIAPERS

Subscription service for purchasing and recycling Redyper brand disposable diapers through Terracycle

LOOP

Offers zero-waste packaging of everyday essentials (beauty, health and personal care, grocery, and household essentials) from leading brands (including Haagen-Dazs!) Details at www.loopstore.com

Details on all programs at
www.themadeleine.edu/terracycle

The Madeleine makes a difference with our electric bill!

Through our electrical provider, Pacific Power, The Madeleine (both our school and church accounts), participate in the Blue Sky Renewable Energy program.

By choosing to green our energy with Blue Sky, we joined a community of individuals and businesses dedicated to reducing their carbon footprint and supporting renewable energy.

In 2021, more than 148,000 Blue Sky participants collectively

supported 1,339,938 megawatt-hours of renewable energy, reducing their combined carbon footprints by 934,800 tons of CO₂e.

We combined the numbers on the two certificates and reports we received into a facsimile report and certificate below showing our combined effort.

A side note: Blue Sky is the program that Augustana Lutheran Church used to install enough solar panels to fully power their church.

IN 2021, YOU SUPPORTED...



38,641 kWh
of renewable energy



which reduced your carbon footprint by
54,901 pounds of CO₂e



That's equivalent to
61,431 miles not driven
in a car

Certificate of Blue SkySM Renewable Energy Support in 2021

BLUESKY
RENEWABLE ENERGY

PACIFIC POWER

Thank you

CHURCH OF MADELEINE

for making a meaningful difference with Blue Sky

In 2021, your business supported...



38,641
kilowatt-hours of
renewable energy

that's how much energy...



58
solar panels would
generate in a year*

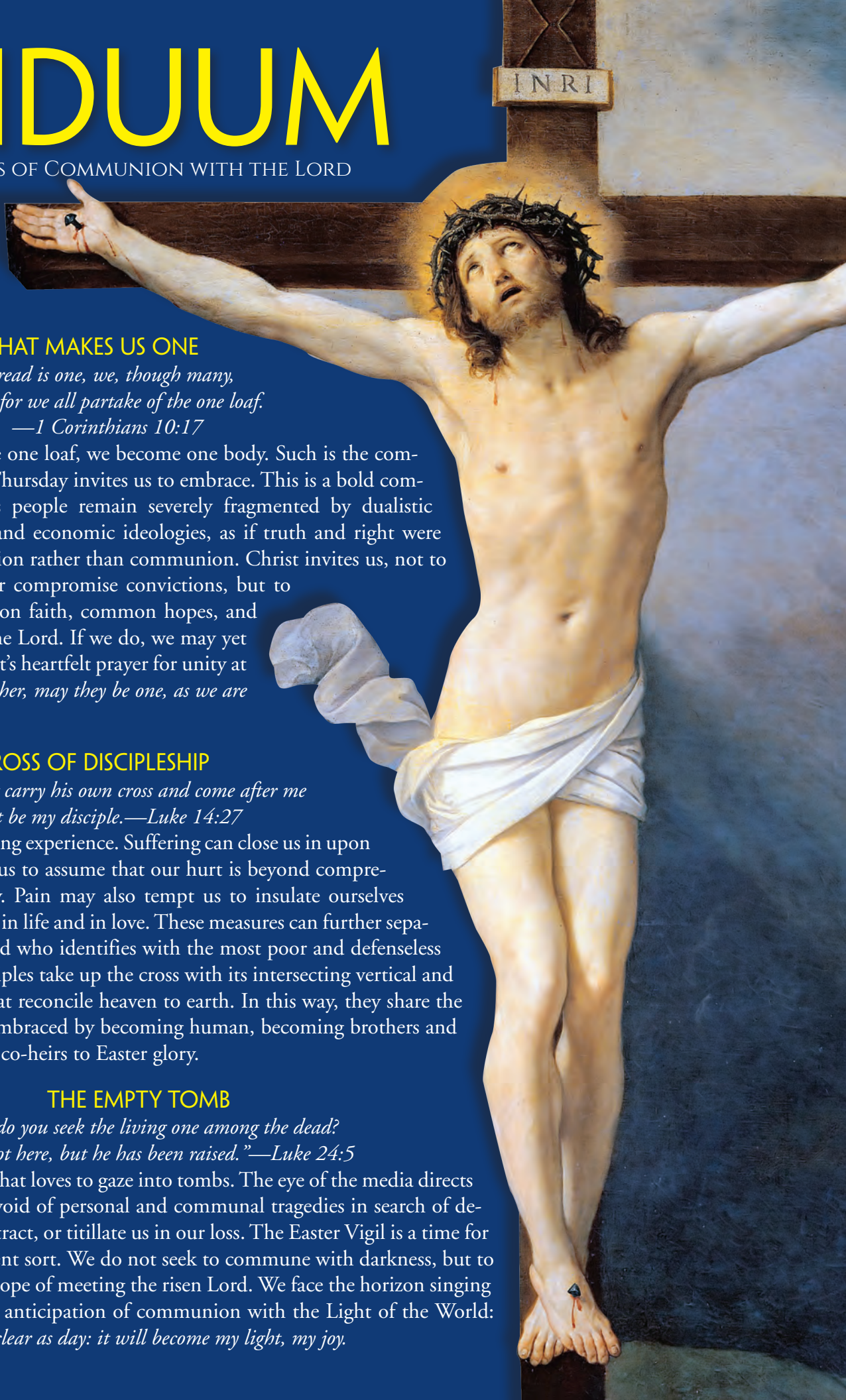


Blue Sky products are Green-e[®] Energy certified, and meet the environmental and consumer-protection standards set forth by the nonprofit Center for Resource Solutions. Learn more at www.green-e.org.

*Solar panel generation based on a 300W solar panel operating at the EIA's 2019 average capacity factor for the U.S. of 24.3% (https://www.eia.gov/electricity/monthly/epm_table_grapher.php?t=epmt_6_07_b)

TRIDUUM

THREE DAYS OF COMMUNION WITH THE LORD



THE BREAD THAT MAKES US ONE

Because the loaf of bread is one, we, though many, are one body, for we all partake of the one loaf.

—1 Corinthians 10:17

As we partake of the one loaf, we become one body. Such is the communion that Holy Thursday invites us to embrace. This is a bold commitment, for God's people remain severely fragmented by dualistic political, religious, and economic ideologies, as if truth and right were by-products of division rather than communion. Christ invites us, not to ignore differences or compromise convictions, but to focus on our common faith, common hopes, and common Spirit in the Lord. If we do, we may yet help to answer Christ's heartfelt prayer for unity at the Last Supper: *Father, may they be one, as we are one* (John 17:22).

THE CROSS OF DISCIPLESHIP

Whoever does not carry his own cross and come after me cannot be my disciple.—Luke 14:27

Pain can be an isolating experience. Suffering can close us in upon ourselves and cause us to assume that our hurt is beyond comprehension or empathy. Pain may also tempt us to insulate ourselves against vulnerability in life and in love. These measures can further separate us from the Lord who identifies with the most poor and defenseless among us. True disciples take up the cross with its intersecting vertical and horizontal beams that reconcile heaven to earth. In this way, they share the vulnerability Jesus embraced by becoming human, becoming brothers and sisters in Christ and co-heirs to Easter glory.

THE EMPTY TOMB

"Why do you seek the living one among the dead? He is not here, but he has been raised."—Luke 24:5

We live in a culture that loves to gaze into tombs. The eye of the media directs us to stare into the void of personal and communal tragedies in search of details to fascinate, distract, or titillate us in our loss. The Easter Vigil is a time for watching of a different sort. We do not seek to commune with darkness, but to keep vigil with full hope of meeting the risen Lord. We face the horizon singing the *Exultet* in joyful anticipation of communion with the Light of the World: *The night will be as clear as day: it will become my light, my joy.*

Celebrating THE TRIDUUM

AT CHURCH AND AT HOME

Many parishes have Adoration of the Blessed Sacrament as part of their **Holy Thursday** celebration. Spend some extra time in silent prayer before the Eucharist.

Stations of the Cross are particularly appropriate on **Good Friday**. By calling to mind the steps in our Savior's journey to Calvary, we can better appreciate what he did for us. Group or individual recitation of the Sorrowful Mysteries of the rosary is another powerful way to call to mind Jesus' sacrifice.

Good Friday is also a day of fast and abstinence: Those 14 and older are to abstain from eating meat, and those aged 18-59 are to fast by taking only one full meal with two smaller meals (no snacks in between).

Holy Saturday features no morning liturgy but some parishes might gather on Holy Saturday morning for Morning Prayer from the Liturgy of the Hours. This is a good day to schedule at least one period of prayer in silence.

The Easter Vigil is a richly symbolic celebration of our belief in the Resurrection and the history of our salvation. Many parishes schedule baptisms for the Easter Vigil liturgy as a concrete representation of salvation through Christ.

Easter Sunday is the preeminent Sunday, reminding us of why we celebrate Mass and worship the Lord throughout the year. "Alleluia" is the word for the day. Sing or repeat it to yourself often as you go through the day's festivities.

THE HISTORY OF THE TRIDUUM

By the second century, Christians celebrated the great Easter Vigil, an event which began the night of Holy Saturday, continuing until dawn on Easter morning. During this vigil, Christians commemorated salvation history, awaited the return of Jesus, and celebrated the resurrection of Jesus at dawn on Easter Sunday. At the vigil, catechumens, after a three year period of catechesis, were baptized and received first communion. At the time, the Easter Vigil was the most important celebration of the liturgical year.

Eventually Christians expanded this celebration to a three-day commemoration of Jesus' passion, death and resurrection, with the Easter Vigil being the high point of the three day commemoration known as the *Triduum* (Latin for "three days"). Over time, as the liturgical year expanded, the Easter Vigil lost its preeminence, although the three days commemorating Jesus' passion still held an important place in the Church year. However, since the reforms of the Second Vatican Council, the Easter Vigil, and the Triduum, have regained their position of prominence in the Western Catholic liturgical calendar.

DID YOU KNOW...

- Lent is officially over with the beginning the Mass of the Lord's Supper on Holy Thursday evening.
- The Paschal Triduum is actually a single liturgical event with three distinct parts: the Mass of the Lord's Supper, Good Friday service and the Easter Vigil.
- The Solemnity of Easter is celebrated not only on Easter Sunday, but on the next seven days as well.
- Holy Saturday is the only day of the liturgical year on which there is neither a celebration of Holy Mass nor a distribution of Holy Communion (except for those critically ill).
- Receiving Holy Communion during the Easter season is required of all Catholics. In the United States, this obligation may be fulfilled anytime from the first Sunday of Lent to Trinity Sunday.

READINGS FOR TRIDUUM 2022

Holy Thursday

Exodus 12:1-8, 11-14 • 1 Corinthians 11:23-26 • John 13:1-15

Good Friday

Isaiah 52:13—53:12 • Hebrews 4:14-16; 5:7-9 • John 18:1—19:42

Easter Vigil

Genesis 1:1—2:2 • Genesis 22:1-18 • Exodus 14:15—15:1 • Isaiah 54:5-14
Isaiah 55:1-11 • Baruch 3:9-15, 32—4:4 • Ezekiel 36:16-28 • Romans 6:3-11
• Lk 24:1-12

Bulletin Advertising: contact Rich Hammons • bulletin@themadeleine.edu • 503--281-5777

Timmco
INSURANCE

Brian Timm
Susan Ames | Derek Ames

1615 NE Broadway | 503-288-8818
www.timmco.com

AUTO | HOME | BUSINESS | LIFE

TIM WALTERS
Principal Broker

The most trusted name in Real Estate!

Committed to the NE Portland
Neighborhoods since 1991



Mark McGinnis

Parishioner, Parent
Mortgage Advisor

NMLS 98586
971-300-0484
mark.mcginis@sPMC.com
"It's about service!"

Sierra Pacific
MORTGAGE

SOCCER CAMP

Bernie Fagan

EST. 1983

T.C. O'LEARY'S
a little irish
PUB

2926 NE Alberta Street
A little taste of Ireland!

Parishioners Tom, Siobhan
& Aine O'Leary

JOHN M. WYNN
ATTORNEY AT LAW
McGill, Kapranos & Wynn
Parishioner

Hollywood Professional Center, 3939 NE Hancock St., Ste. 305
jmwpxd@qwestoffice.net • 503-287-7333

LANCE MARRS

PRINCIPAL BROKER
503.701.5323
PORTLAND MODERN REAL ESTATE
LICENSED IN OREGON
PORTLANDMODERN.COM

PAUL MARRS

MORTGAGE LOAN OFFICER NMLS ID #5212
O:503.789.2114 B:503.994.8559
PMARRS@CANOPYMORTGAGE.COM
CANOPYMORTGAGE.COM/PAULMARRS
CANOPY MORTGAGE

Beaverton Branch Canopy Mortgage, LLC 12655 SW Center Street Beaverton OR 97005 NMLS ID #1359687

JOSÉ MESA AUTO WHOLESALE, LLC
"The mobile auto dealer who is always in your neighborhood."
YOUR DISCOUNT AUTO RETAILER SINCE 1992!
sales@josemesa.com 503-789-0438 www.josemesa.com
NEW•USED•BUY•SELL•LEASE•TRADE•CONSIGN•BROKER•APPRAISE

Dr. Phil Doleac, PC
Orthodontics for all ages
www.magic-smiles.com

Beaverton Portland Scappoose
503.644.7009 503.255.1694 503.543.4488

Sweetly Aimee, LLC
Custom Wedding and All-Occasion Cakes and Desserts

Aimee Holzschuh
Parishioner & Parent
503.998.7368
www.SweetlyAimee.com

Beaumont Vision:
providing full-service eyecare for all ages, including comprehensive exams, glasses and contacts

Dr. Ann R. Lewis
Beaumont Vision
4331 NE Fremont St
Ph: 503-331-3937

Stop by to view our unique eyewear
Most insurances accepted!

JOHN W. LOBO PAINTING
Custom Interior & Exterior
Creative Finishes
503-969-3337 CCB#89027
Licensed Bonded Insured

ADVERTISE HERE!
Contact Rich Hammons,
bulletin@themadeleine.edu

Retrouvaille
A Christian Peer Ministry
A LIFELINE FOR
HURTING MARRIAGES

Is your marriage tearing you and your family apart?
Weekends held every February, June & October at Mt. Angel Retreat Home
www.helpourmarriage.com
503-704-7382
Donated by Kevin & Carol McMenamin

ANNE C. STEINER
ESTATE PLANNING
ELDER LAW ATTORNEY
503.946.8361 • 1915 NE Cesar Chavez Blvd.
PARISHIONER - anne.c.steiner@gmail.com
WILLS - TRUSTS - PROBATE
GUARDIANSHIP - CONSERVATORSHIP

PAUL MYERS, Ph.D., LLC
PSYCHOTHERAPY, COUNSELING & CONSULTING SERVICES

(503) 381-6685 paulmyersphdpdx@gmail.com
www.paulmyersphdpdx.com

THEORY
MORTGAGE

Beating Banks Daily

Brian DuVal
503-850-7667

NMLS 5912, NMLS 1848246

Ashley
REALTY WORKS TEAM

PARISHIONERS, NEIGHBORS, EXPERT REALTORS

Wick & Karoline Ashley
karoline@ashleyrealtyworks.com
(503) 819-4851
237 NE Broadway Suite 100

RE/MAX
equity group

CITY HOME IMPROVEMENT, Inc.

Kitchens | Bathrooms | Additions
Since 1956

Please visit our showroom or call for a free in-home estimate

503-253-7591

www.cityhomeimprovementinc.com
8811 NE Sandy Blvd. Portland, OR 97220

WILLAMETTE FINANCIAL ADVISORS, LLC
PERSONALIZED ADVICE FROM TRUSTED ADVISORS

James M Jones
Financial Advisor, CFP®
Parishioner
Direct 503.284.9200
Office 503.7470306
jimj@wfinadv.com



Whole house remodels
• Kitchens • Bathrooms
• Basements • Additions
In-house architecture & design

Nathalie Roloff, Parishioner

503.245.0685
rolloffconstruction.com
4300 NE Fremont #130

CCB #140721
WA#ROLOFC1873KU

ROLOFF CONSTRUCTION