



THIS WEEK AT THE MADELEINE

Furthering the Reign of God, Where All Are Welcome • February 19–20, 2022

TELL POPE FRANCIS WHAT YOU THINK!

We request your participation for the Synod on Synodality

Beginning this weekend, we are offering several ways of participating in the Synod—the invitation to you from Pope Francis to discern how he is to lead the Catholic Church of today and the future. He wants to hear from YOU and from the Church worldwide. Here are the ways you can participate in the Synod process:

- ▶ **Facilitated Listening Session**—Attend one of the following one-hour facilitated “listening sessions:”
 - ▶ **In Person—February 27, 11:30 am**, in the Old Church (with pizza lunch).
 - ▶ **Via Zoom—March 6, Noon**. Email to synod@themadeleine.edu to register and receive the Zoom link.
- ▶ **Online Form**—Anonymously submit responses through our parish website at www.themadeleine.edu/synod
- ▶ **Handwritten Response**—Submit responses anonymously in writing and drop off at Parish Office or in the collection basket.

- ▶ **Question 1:** What in the church fills me with life? How is the Holy Spirit working in my life to deepen my faith and inspire me to be a better disciple and witness of Christ’s love to others?
- ▶ **Question 2:** As a community of believers, what experiences of the Catholic Church have brought joys or revealed wounds? And how can these experiences help us grow together in faith and offer the hope and healing of Christ to the greater community in which we live?
- ▶ **Question 3:** As a Catholic community, we are expressly enjoined to invite others into a life-giving relationship with Jesus Christ. When we dream about how best to accomplish this, what steps is the Holy Spirit inviting the Church in western Oregon to take?

Father Mike has also added this question

- ▶ **Question 4:** Pope Francis has invited you to the Vatican and a pizza lunch. He wants to hear from you—your candid thoughts—on the Catholic Church. What do YOU want to tell him?

Participate online at www.themadeleine.edu/synod • Submission deadline March 19

Seventh Sunday in Ordinary Time

TO LOVE OUR ENEMIES IS SURELY HARD, unreasonable, yet it is also the most radical obedience that Jesus asks of his disciples as he continues his Sermon on the Plain. To love our enemies who victimize us makes us no longer victims; we become free people whose behavior is determined by no one else—except the Christ of whom we are disciples. Love your enemies. Pray for those who mistreat you. Lend expecting nothing back. Stop judging. Stop condemning. Forgive. That’s how we get to heaven.

PRAY FOR OUR FAITHFULLY DEPARTED

Don Kullberg

David Kimball

PRAYER REQUESTS

For those who are ill, or in need of our prayers

Carl Mason
Chris Nieman
Don Dunbar

Virginia Henry
Mary Nieman

WORSHIP & PRAYER

- 02/22, Tues. Maureen Delaney
- 02/23, Weds. Bonnie Gregg
- 02/24, Thurs. Susan Carpenter
- 02/25, Fri. Quenton and Ann Czuba
- 02/26, Sat. Paul Heberer †
- 02/27, Sun. 8:00 am The Madeleine Community
10:00 am Kim Mello †
6:00 pm Dirk Fournier †



THE MADELEINE MARDI GRAS

FAT TUESDAY • MARCH 1

FREE MUSIC, PIZZA BEER & WINE. ALL ARE WELCOME.

- 5:30 PM**—MEET AT THE CHURCH- ENJOY **LIVE DIXIELAND MUSIC** AND A SPECIAL MESSAGE FROM FATHER MIKE.
- 6:15 PM**— **MARCH TO THE COURTYARD** AS THE BAND PLAYS “THE SAINTS GO MARCHING IN.” MARDI GRAS BEADS, TOO!
- 6:30 PM**— MEET IN THE COURTYARD FOR **FREE PIZZA, BEER, WINE**, PLUS MORE LIVE MUSIC AND A FEW KIDS ACTIVITIES!

**SO WE KNOW HOW MUCH TO ORDER,
PLEASE RSVP AT WWW.THEMADELEINE.EDU/MARDIGRAS**

Calendar This Week

SUNDAY, FEBRUARY 20

8:00 am: Mass—Church  IN-PERSON

10:00 am: Mass—Church
 IN-PERSON  LIVESTREAM

11:30 am: Laudato Si'—Zoom

MONDAY, FEBRUARY 21

▶ No School; Parish Office Closed—President's Day

TUESDAY, FEBRUARY 22

▶ No School—Inservice Day

8:00 am: Mass—Church

9:00 am: Adoration—Church

7:00 pm: Knights of Columbus—Fireside Rm

WEDNESDAY, FEBRUARY 23

8:00 am: Mass—Church

7:00 pm: Madeleine Choir Rehearsal

THURSDAY, FEBRUARY 24

2:00 pm: Mass—Church

 IN-PERSON  LIVESTREAM

FRIDAY, FEBRUARY 25

8:00 am: Mass—Church  IN-PERSON

SATURDAY, FEBRUARY 26

▶ Archbishop's Catholic Appeal Commitment

5:00 pm: Mass—Church  IN-PERSON

SUNDAY, FEBRUARY 27

▶ Archbishop's Catholic Appeal Commitment

8:00 am: Mass—Church

9:00 am: RCIA—St. Catherine Rm

9:00 am: Confirmation Class—Fireside Rm

10:00 am: Mass—Church

 IN-PERSON  LIVESTREAM

11:30 pm: Synod Listening Session—Old Church

6:00 pm: Contemplative Mass—Old Church

 IN-PERSON

PARISH OFFICE CLOSED MONDAY, FEBRUARY 21

In celebration of Presidents Day, the Parish Office will be closed on Monday, February 21

ACCESSING THE MADELEINE IN TIME OF COVID

▶ Mass livestreams:

www.youtube.com/themadeleineparish

▶ **Parish Emails:** To sign up, visit
www.themadeleine.edu/email

Care for our Common Home *Laudato Si'*

GREEN TIPS FOR A MORE SUSTAINABLE LIFESTYLE

In North America, we cut down millions of trees each year in order to produce paper towels. To reduce our paper product consumption, save an old piece of clothing and use it as a rag to wipe up messes. By reusing materials, we decrease the pressure on our forests. This helps save forest ecosystems, which are an important part of the biodiversity of our planet.

PARISH LIFE

MADELEINE BOOK CLUB

Do you love to read? Would you enjoy opportunities to meet with other parishioners and friends to share in thoughtful discussion/debate over the contents of some very excellent books?

If so, you are most cordially invited to join our genial group. We are hoping to return to in-person sessions next month and would love to meet you!

For further information, please contact our ministry coordinator, Gretchen Stevenson, gypsyfrau47@yahoo.com or 503-313-6834.

WORLDWIDE MARRIAGE ENCOUNTER

“Why do you notice the splinter in your brother's eye, but do not perceive the wooden beam in your own? Take time to learn about yourself and your spouse by participating in a Worldwide Marriage Encounter Experience on May 27-29 at Our Lady of Peace Retreat House in Beaverton, Oregon. To apply for your WWME Experience or search other dates go to rediscoverthepark.org

For information about WWME call 503-704-0836 or by email at reservations@rediscoverthepark.org

CLEAN CLUB NEIGHBORHOOD CLEANUP

Neighborhood CLEAN Club Cleanup: Saturday, March 5, 9:00 am–11:00 am. Please join our school environmental CLEAN Club in partnership with the parish Laudato Si' Circle and SOLVE for a morning of Care for Creation.

Please meet in the Parish Courtyard at 9:00 am for a morning of community stewardship picking up litter around

The Madeleine School and Parish neighborhood.

All ages and families are welcome (13 and younger must be supervised by an adult). Please sign up on the SOLVE site at www.bit.ly/clean-20220305 and/or contact Ann Hart for more details ahart@themadeleine.edu We hope you can join us!

ARCHBISHOP'S CATHOLIC APPEAL

Next weekend is Commitment Weekend for the Archbishop's Catholic Appeal. During Mass we will watch a video from Archbishop Sample about the Appeal. If you received a personalized commitment card in the mail please bring it to Mass with you as we join together to support our Catholic Church in western Oregon. If you did not receive a commitment card in the mail, pledge envelopes will be available during Mass.

This next week, please read the Archbishop's Catholic Appeal materials you received today and prayerfully reflect on the level of commitment you will make next weekend.

The Archbishop's Catholic Appeal provides substantial financial support to essential ministries that support parishes in



our Catholic Church in western Oregon. These programs provide education and faith formation at all levels and provide a Catholic presence for tens of thousands of people.

When we stop to count our abundant blessings, we are aware of how truly blessed we are. The Archbishop's Catholic Appeal is an invitation to share your blessings and support for the Gospel mission here in western Oregon.

Your pledge is also a sign of your gratitude for God's generous abundance. While we can never out-do God in generosity, we are called to join in the mission of the Gospel as we put forth the gifts of life, goodness, and grace through the sharing of our own blessings from God.



In today's Gospel, Jesus gives us the challenge to: "Love your enemies...Give to everyone who asks of you...Do to others as you would have them do to you...Be merciful, just as your Father is merciful." It is true that donations come to the Society because a good person produces goodness from the good in their heart.
— Mary Clare O'Brien, 503-309-7639

OPPORTUNITIES AT THE MADELEINE

THE MADELEINE IS HIRING!

Spring is coming! And with the sun, birds and blooming flowers are a few prized job openings at The Madeleine...both in the parish office and in the school.

School Development Coordinator

Part-time opportunity • 20 hours/week during school year

We are seeking a part-time Development Coordinator. The hours are ideal for anyone seeking employment on a school year schedule with this position working 20 hours each week, with the potential to increase hours on an as needed basis.

The Development Office is responsible for assisting with the school's yearly fundraising events, administering the Annual Fund Campaign, assisting with

marketing and admissions efforts, and publishing Friday Footnotes each week. This position plays an important role in supporting all department functions. We hope you will consider applying!

More information and complete job description at www.themadeleine.edu/jobs

Please contact Carol Glasgow at cglasgow@themadeleine.edu if you are interested.

Classroom Instructional Assistant

Full time during school year

Our First Grade classroom needs an Instructional Assistant. If you or someone you know is interested in pursuing this wonderful opportunity, please take a look at the position description at

www.themadeleine.edu/jobs

If you have any questions about the position, please contact Carol Glasgow cglasgow@themadeleine.edu or 503-288-9197

Event Coordinator Position

Part-time opportunity • Flexible "as needed" hours

The parish is looking to hire another Event Coordinator to assist with use of event rental spaces. Responsibilities include set up and take down of event spaces, maintaining relationships and professionalism with clients, and overseeing the responsibilities of dishwashers

and bussers. We are looking for someone who is personable and can maintain a high attention to detail in a fast paced environment. Hours are flexible and are on an 'as needed' basis. Please contact Ann Hart to apply ahart@themadeleine.edu

PARISH LIFE

CONTEMPLATIVE SUNDAY EVENING MASS IS BACK!

Begins Sunday, February 27, 6:00 pm

Join us for Contemplative Mass in the Old Church on Sunday, February 27, at 6:00 pm.

This is a great opportunity to come to a later, quieter Mass...and possibly at a time that's more convenient for folks who travel on the weekend. And with pizza and drinks following Mass, dinner is taken care of as well.

Moving forward, this Mass will be held on the last Sunday of each month except December.

February 27	July 31
March 27	August 28
April 24	September 25
May 29	October 30
June 26	November 27

WEEKLY MASS TIMES

Masses:

Tuesday, Wednesday, Friday 8:00 am
 Thursday (During School) 2:00 pm
 Saturday Vigil 5:00 pm
 Sunday 8:00 am, 10:00 am
 Contemplative Mass . . . last Sunday of each month
 6:00pm Old Church

Notes:

► Livestream 10:00 am Sunday and 2:00 pm Thursday at youtube.com/themadeleineparish

PenanceBy appointment; call Parish Office

PARISH OFFICE

Hours Monday–Friday, 10:00 am–3:00 pm

Phone: 503-281-5777 **Fax:** 503-281-0673

School Office 503-288-9197

PARISH STAFF

Rev. Mike Biewend—Pastor
fathermike@themadeleine.eduext. 111

Deacon Mike O'Mahoney—Permanent Deacon
deaconmike@themadeleine.edu

Carol Glasgow—School Principal
cglasgow@themadeleine.edu . . . 503-288-9197

John Garrow—Business Manager
jgarrow@themadeleine.eduext. 118

Darlene Maurer—Pastoral Assistant
dmaurer@themadeleine.edu ext. 125

Therese Fenzl—Director of Spiritual Ministries
tfenzl@themadeleine.eduext. 116

Maria Manzo—Director of Music
mmanzo@themadeleine.eduext. 113

Ann Hart—Events Manager
ahart@themadeleine.edu

Allison Blakemore—Bookkeeper
ablakemore@themadeleine.eduext. 119

Mary Prusso—Registration
mprusso@themadeleine.eduext. 112

Julie Kupers—Special Events
jkupers@themadeleine.edu . . . 720-936-5635

Janeen Reilly—Parish Administrator
jreilly@themadeleine.eduext. 110

Terry Silva—Facilities Support
tsilva@themadeleine.eduext. 117

Rich Hammons—Director of Communications
rhammons@themadeleine.eduext. 129

SACRAMENTS

Marriages, Funerals, Anointing of the Sick—Fr. Mikeext. 111

Infant Baptism—Darlene Maurer ext. 125

First Reconciliation, First Eucharist—Trisha Mummext. 127

RCIA—Christi Bohmbach, rcia@themadeleine.edu

Confirmation—Fr. Mikeext. 111

COUNCILS & CONTACTS

Pastoral Council—Meg Scharle

Finance Council—Jim Jones. 503-284-3301

Buildings & Grounds—Erin Couch . . . 503-281-9575

School Advisory—Eric Robinson 971-227-3772

Facility Requests—themadeleine.edu/facilities

Maintenance Requests—John Garrow
jgarrow@themadeleine.eduext. 118

Bulletin submissions due 5:00 pm Tuesday

Email to bulletin@themadeleine.edu

POPE FRANCIS ANNOUNCES A SYNOD ON SYNODALITY

We invite and encourage your participation

“It is precisely this path of synodality which God expects of the Church of the third millennium. Are we prepared for the adventure of this journey?”

—Pope Francis

Our Holy Father Pope Francis has invited the Catholic Church worldwide to embark on a journey together—Synod on Synodality (formally known as “For a Synodal Church: Communion, Participation, and Mission”). In 2022, through listening and discernment, the entire people of God will be called to contribute to a process by which the Church deepens in understanding its mission and future. We will travel together on a journey of spiritual discernment guided by God’s word and the Holy Spirit. It is a grace-filled event and a process of healing.

What is a Synod?

Formally speaking, a Synod is a meeting of bishops gathered to discuss a topic of theological or pastoral significance, and culminating in a document of advice or counsel to the Pope. A Synod is the mechanism by which the Church begins this important work. However, it is not just a convening of Bishops reflecting on a particular topic and advising the Pope. Rather, a Synod is a journey of discernment in which the people of God are called to pray and reflect upon the Holy Spirit’s will for the Church. Through our listening and sharing, we will seek to understand what the Holy Spirit’s will is for the Church. Pope Francis extends the invitation to the entire Church, and promises to intently listen for understanding and the promptings of the Holy Spirit.

What do we mean by Synodality and what is its purpose?

Simply stated, Synodality is discerning how the Holy Spirit is moving through and with the Body of Christ, so that we may continue fulfilling our mission to evangelize in the world. Pope Francis stated his intent for this particular Synod



as a *“Time to look others in the eye and listen to what they have to say, to build rapport, to be sensitive to the questions of our sisters and brothers, to let ourselves be enriched by the variety of charisms, vocations, and ministries”* (Homily, October 10, 2021). It’s a personal invitation extended to each of us for shaping the future Church.

Three verbs define the path for this Synod—encounter, listen, and discern—and these two questions will lead us in doing that:

- ▶ Are we good at listening?
- ▶ How good is the “hearing” of our heart?

If we approach the Synod with sincerity, we are sure to be amazed by the ways in which the Holy Spirit leads us to fresh paths and new ways of thinking and speaking.

In the spirit of Synodality, Pope Francis has challenged us to *“... not soundproof our hearts; let us not remain barricaded in our certainties. Certainties often close us off. Let us listen to one another”* (Homily, October 10, 2021).

When will I be invited to participate in this Synod?

As a signal of its importance, Pope Francis launched this two-year global

Synod consultation process in October 2021, and it concludes in Rome in October 2023. At the direction of Archbishop Sample and the Synod Steering Committee, we will begin preparations in January 2022.

Here is a preliminary timeline:

Now until...

- ▶ **August 15**—Prayer Phase.
- ▶ **January 20**—Virtual workshop for Archdiocesan pastors, pastoral council chairpersons, religious superiors, apostolate directors, and Catholic leaders.
- ▶ **February & March**—Parish Participation Phase.
- ▶ **April & May**—Vicariate (regional) Participation Phase.
- ▶ **June**—Archdiocesan Discernment Phase.
- ▶ **July**—Preparation of Report and Submission to U. S. Bishops.
- ▶ **August 15**—Conclusion of Local Participation in the Synod.

How is The Madeleine Parish preparing for this Synod?

Prayer and adoration will form the foundation of the Archdiocese of Portland’s Synod discernment process. Discernment gatherings will take place at three levels: parish, vicariate (regional), and diocesan. As a parish (and throughout the Archdiocese), we will be praying the special Prayer for The Synod on Synodality found on the inside cover of the Breaking Bread books. Copies of the prayer card will also be available for taking home and including in daily devotions.

During the parish phase, pastors, with the help of Pastoral Council members and others, will organize discernment sessions. During this phase, all are invited and encouraged to participate in the Synod.

How will you respond to this important invitation?

Can we count on you to participate in this important work?

“Let us not miss out on the grace-filled opportunities born of encounter, listening, and discernment. In the joyful conviction that, even as we seek the Lord, he always comes with his love to meet us first” (Pope Francis’ Homily, October 10, 2021).

MAKE A JOYFUL NOISE! MUSIC OPPORTUNITIES FOR YOUTH AT THE MADELEINE

The Madeleine Children's Choir • The Madeleine Jr. Cantor Ensemble

We are pleased to announce we are recruiting for children and youth to participate in The Madeleine's Music Ministry.

Here are the details:

The Madeleine Children's Choir

The Madeleine Children's Choir is singing again! ALL parish children, grades 3-5 (2nd grade by permission only) are invited to sing in our primary Children's Choir. The Children's Choir meets on Wednesdays from 2:40-3:20 PM in Main Church loft. The remainder of this year, the children will participate in many wonderful parish events, including Mardi Gras, the Family Mass, Easter, First Communion, and even a spring concert! What a wonderful way to welcome everyone back to The Madeleine! Here is



the current schedule. Watch for updates in the bulletin and on the Music Ministry page of the website.

Current Rehearsals: Wednesday,

February 23, March 9, March 16, March 30, April 6, April 13.

NO Rehearsal: Wednesday, March 2, March 23

The Madeleine Jr. Cantor Ensemble*

All children, grades six—eight are eligible for the Jr. Cantor Ensemble at The Madeleine. If you would like to learn how to be a cantor, this is the place for you! Children will sing together as an ensemble, as well as work on solo vocal skills. This is a NEW music ministry ensemble, so rehearsals and performances are yet to be determined.

To register for either group or for more information, please contact Maria Manzo, Director of Music, at mmanzo@themadeleine.edu

Annual Madeleine Knights of Columbus



ST. PATRICK'S DAY DINNER



THE MADELEINE PARISH HALL

SATURDAY, MARCH 12 • DOORS OPEN AT 6:30, DINNER AT 7:00 PM

TAKE-OUT DINNERS 5:30–6:30 PM (prepaid only)

This year's event will be scaled down in numbers with about half as many attendees. All you can EAT Corned Beef & Cabbage; includes cole slaw & traditional vegetables. "Pot of Gold" Raffle & Irish Dancing

Proof of Vaccination required; 6 people per table; masking when not eating or drinking



Tickets \$30  Kids ^{UNDER 12} \$5



RESERVATIONS & tickets:

Order tickets or take-out at www.themadeleine.edu/st-pats

Or Contact Trieu Nguyen 503-720-0155 or John Wynn 503-309-4170

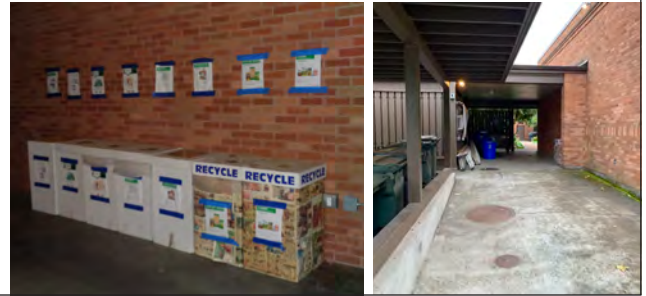
Proceeds to benefit Mother & Child Education Center & Madeleine Scholarship Fund

RECYCLING PROGRAMS AT THE MADELEINE

Marked collection bins in the breezeway facing 23rd Ave.

The Madeleine's Laudato Si' Circle and Care for Creation Ministry have joined with U. S. based recycler, Terracycle, to offer our parish, school, and community opportunities to responsibly recycle specific items (primarily plastics) not generally handled at curbside. Terracycle has added more manufacturers to its program, and in turn, we have expanded our recycling offerings. Here is a current listing of what we are collecting. Please keep this in mind:

- ▶ Do not include garbage or items not specifically mentioned in the descriptions.
- ▶ Empty containers of contents. No need to wash first; ensure packaging is dry.



DISCONTINUED: STYROFOAM/ POLYSTYRENE

Regrettably, we can no longer accept Styrofoam and Polystyrene materials. Although endorsed by Metro, we have recently learned (through an independent report) of major violations by the local recycler in the responsible handling and recycling of these materials.

LATE JULY® SNACKS

All Late July® snack packaging as seen in these examples. Limited to Late July brand only.



GILLETTE® AND VENUS RAZORS AND RAZOR BLADES

All brands of blades and razors (systems and disposable units, and replaceable-blade cartridge units), rigid plastic packaging, and flexible plastic bag packaging.



BIC WRITING INSTRUMENTS AND PACKAGING

All brands of empty writing instruments, glue sticks, water-color dispensers, highlighters, paint sets, and flexible packaging.



METAL-BASED COOKWARE AND CUTLERY

All brands of metal-based cookware, bakeware and cutlery (non-stick Aluminum, Stainless Steel, Carbon Steel, Cast Iron). Please make sure items are thoroughly clean and dry.



ORAL CARE PRODUCTS

All brands of used or empty oral care products, including toothpaste tubes, tooth brushes, and dental floss containers.



SWIFFER REFILLS



Swiffer only brands of Sweeper™ Dry, Wet, and XL Refills, WetJet Refills™, and Duster™ Refills.

FOOD STORAGE

All brands of well-used plastic and glass food storage containers.



CIGARETTE BUTTS, SANTA FE NATURAL TOBACCO COMPANY

All brands of fully extinguished cigarettes (and ashes) and tobacco products, including filters, plastic packaging, inner foil packaging, rolling paper, and loose tobacco pouches.



OFFSITE RECYCLING OPPORTUNITIES FOR FAMILIES

REDYPER DISPOSABLE DIAPERS

Subscription service for purchasing and recycling Redyper brand disposable diapers through Terracycle

LOOP

Offers zero-waste packaging of everyday essentials (beauty, health and personal care, grocery, and household essentials) from leading brands (including Haagen-Dazs!) Details at www.loopstore.com

Details on all programs at
www.themadeleine.edu/terracycle

In Memoriam

THE MADELEINE FAMILY REMEMBERS

DON KULLBERG

A Funeral Mass was held for longtime parishioner Don Kullberg on Saturday, February 19 at The Madeleine.

Donald Paul Kullberg was born July 28, 1930 in Portland, Oregon. He passed away peacefully Jan. 27, 2022.

Don grew up with his parents, Marie and Paul Kullberg, and two sisters—Audrey and Margie—only half a block from The Madeleine where he attended elementary school. After graduating from Central Catholic, he got a degree from the University of Portland where he met the love of his life, Nanette Tritz. They were married for 65 years, until her unexpected passing in April, 2021.

They lived in the same home in the Madeleine Parish for over 50 years, raising seven children: Kathy, Michael, David, Cindy, John, Tracy, and Jim. Over time, the family grew exponentially with grandchildren and great grands but their home remained the center for gatherings and celebrations—from simple Friday night soup ‘n cocktails, to crowded, boisterous, holiday reunions.

And there was another special place. Don lived and worked in Portland (40 years at Air Products), but his heart was at the family farm in Battle Ground. From his first trip at two weeks old, to his last visit a month ago, he spent countless happy and hard-working days there. He built a small home on a hill and brought the family out on weekends and summers for decades. He never stopped enjoying the farm—watching children and grandchildren, nieces and nephews, and the valley views from

the deck. Ideally, wrapped in sunshine.

But Don didn't mind getting away from the crowd either. He treasured time by himself and with family at their Rockaway Beach condo; multiple trips with Nan to Reno, Hawaii, La Quinta and on Caribbean cruises. And maybe their fondest travel experience: a once-in-a-lifetime trip to Paris.

Though Don could seem a bit crusty on the outside at times, he was soft and sweet on the inside. And totally devoted: To Nan, always saying “I love you” with a little kiss when they parted — just to be sure that was the last thing they said to each other; to his seven children, helping them no matter what problem, no matter what age; and to the ranch, working until the end to keep it going for the extended family.

The Kullberg children and grandchildren feel blessed to have had two such amazing role models in Don and Nan. They both are terribly missed, but their lessons in devotion and unconditional love will live on with all of us.



Please pray for Don, his family, and all the faithfully departed from The Madeleine

A versatile **event oasis** in the heart of **Historic Irvington**

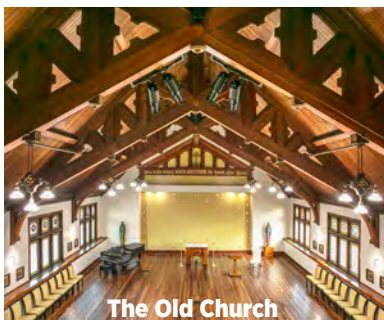
With life getting closer to normal, we invite you to consider The Madeleine for your upcoming event needs.

THE MADELEINE HALL—

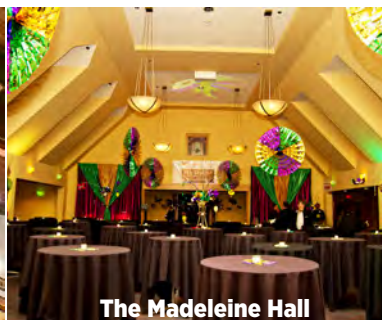
Whether dressed up for a formal gala, decorated for a dance, or setup for a professional dinner, The Madeleine Hall is our largest and most versatile space. The high, gabled ceiling adds a majestic air, but the unique configuration retains an intimate feel.

THE FIRESIDE ROOM—

On its own, The Fireside Room is a warm, cozy space for meetings, talks, recitals and small banquets. It seamlessly pairs with The Madeleine Hall for larger events or as a social area or silent auction space.



The Old Church



The Madeleine Hall



St. Catherine Room



Fireside Room

beautiful space offers brand-new convenience and comfort with an historic 1911 aesthetic.

ST. CATHERINE ROOM—

This beautiful fellowship room, regaled with historically restored stained glass, is ideal for meetings, seminars or combined with The Old Church for larger events.

From wedding receptions and retreats to auctions, recitals and fundraisers, our versatile spaces—all air conditioned—are beautiful, cost effective and include ample amenities to make your event truly special.

THE OLD CHURCH—

After the thoughtfully spectacular \$4.1 million renovation in 2019, **The Old Church at The Madeleine** is available for events from 20 to 200 people in a breathtaking, historic setting. This

Contact Ann Hart, Events Manager

ahart@themadeleine.edu

or call the Parish Office at 503-281-5777



Timmco
INSURANCE

Brian Timm
Susan Ames | Derek Ames


1615 NE Broadway | 503-288-8818
www.timmco.com

AUTO | HOME | BUSINESS | LIFE



Sweetly Aimee, LLC
Custom Wedding and All-Occasion Cakes and Desserts

Aimee Holzschuh
Parishioner & Parent
503.998.7368
www.SweetlyAimee.com



TIM WALTERS
Principal Broker

The most trusted name in Real Estate!

Committed to the NE Portland Neighborhoods

28+ years of experience

503-545-1880 | TimWaltersRealtor@gmail.com | TimWaltersPC.com

Mark McGinnis

Parishioner, Parent
Mortgage Advisor



NMLS 98586
971-300-0484
mark.mcginis@spmc.com
"It's about service!"



Sierra Pacific
MORTGAGE



SOCCER CAMP
Bernie Fagan
EST. 1983

T.C. O'LEARY'S
a little irish
PUB

2926 NE Alberta Street
A little taste of Ireland!



Parishioners Tom, Siobhan & Aine O'Leary

JOHN M. WYNN
ATTORNEY AT LAW
McGill, Kapranos & Wynn
Parishioner

Hollywood Professional Center, 3939 NE Hancock St., Ste. 305
jmwpxd@qwestoffice.net • 503-287-7333



LANCE MARRS


PRINCIPAL BROKER
503.701.5323
PORTLAND MODERN REAL ESTATE
LICENSED IN OREGON
PORTLANDMODERN.COM




PAUL MARRS

MORTGAGE LOAN OFFICER NMLS ID #5212
O:503.789.2114 B:503.994.8559
PMARRS@CANOPYMORTGAGE.COM
CANOPYMORTGAGE.COM/PAULMARRS
CANOPY MORTGAGE

Beaverton Branch Canopy Mortgage, LLC 12655 SW Center Street Beaverton OR 97005 NMLS ID #1359687



JOSÉ MESA AUTO WHOLESALE, LLC
"The mobile auto dealer who is always in your neighborhood."
YOUR DISCOUNT AUTO RETAILER SINCE 1992!
sales@josemesa.com 503-789-0438 www.josemesa.com
NEW•USED•BUY•SELL•LEASE•TRADE•CONSIGN•BROKER•APPRAISE



Dr. Phil Doleac, PC
Orthodontics for all ages
www.magic-smiles.com

Beaverton Portland Scappoose
503.644.7009 503.255.1694 503.543.4488

A CRAFTSMAN'S TOUCH, LLC
QUALITY WOOD FLOORS
INSTALLATION - REFINISHING
27+ YRS EXPERIENCE CCB #172097
NICK STEVENSON 503-380-8962
Family Parishioners



Beaumont Vision:
providing full-service eyecare for all ages, including comprehensive exams, glasses and contacts

Dr. Ann R. Lewis
Step by step vision care unique eyewear
Most insurances accepted

4331 NE Fremont St
Ph: 503-331-3937

JOHN W. LOBO PAINTING
Custom Interior & Exterior
Creative Finishes
503-969-3337 CCB#89027
Licensed Bonded Insured

NEW AD COMING SOON!



Retrouvaille
A Christian Peer Ministry
A LIFELINE FOR HURTING MARRIAGES

Is your marriage tearing you and your family apart?
Weekends held every February, June & October at Mt. Angel Retreat Home
www.helpourmarriage.com
503-704-7382
Donated by Kevin & Carol McMenamin

ANNE C. STEINER
ESTATE PLANNING
ELDER LAW ATTORNEY


503.946.8361 • 1915 NE Cesar Chavez Blvd.
PARISHIONER - anne.c.steiner@gmail.com

WILLS - TRUSTS - PROBATE
GUARDIANSHIP - CONSERVATORSHIP



PAUL MYERS, Ph.D., LLC
PSYCHOTHERAPY, COUNSELING & CONSULTING SERVICES

(503) 381-6685 paulmyersphdpdx@gmail.com
www.paulmyersphdpdx.com

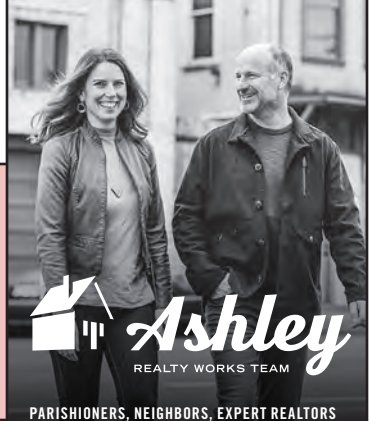


THEORY
MORTGAGE

Beating Banks Daily

Brian DuVal
503-850-7667

NMLS 5912, NMLS 1848246



Ashley
REALTY WORKS TEAM

PARISHIONERS, NEIGHBORS, EXPERT REALTORS

Wick & Karoline Ashley
karoline@ashleyrealtyworks.com
(503) 819-4851
237 NE Broadway Suite 100




CITY HOME IMPROVEMENT, Inc.
Kitchens | Bathrooms | Additions
Since 1956

Please visit our showroom or call for a free in-home estimate

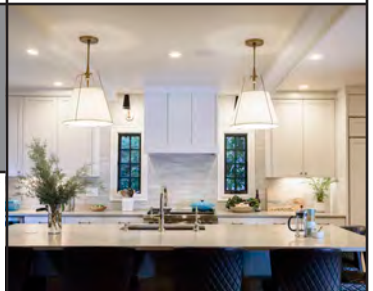
503-253-7591

www.cityhomeimprovementinc.com
8811 NE Sandy Blvd. Portland, OR 97220



WILLAMETTE
FINANCIAL ADVISORS, LLC
PERSONALIZED ADVICE FROM TRUSTED ADVISORS

James M Jones
Financial Advisor, CFP®
Parishioner
Direct 503.284.9200
Office 503.7470306
jimj@wfinadv.com

Whole house remodels
• Kitchens • Bathrooms
• Basements • Additions
In-house architecture & design

Nathalie Roloff, Parishioner

503.245.0685
rolloffconstruction.com
4300 NE Fremont #130



CCB #140721
WA#ROLOFC1873KU

ROLOFF
CONSTRUCTION