



# THIS WEEK AT THE MADELEINE

Furthering the Reign of God, Where All Are Welcome • January 22-23, 2022

## THE MADELEINE SCHOOL 2022-23 OPEN HOUSE AND ADMISSIONS

**Open House and Tours: Sunday, January 30, 11:30 am-1:30 pm**  
**Priority registration for parishioners through January 31, 4:00 pm**

It's that time of year again...time to start thinking about school enrollment for Fall 2022. We invite all interested parents and guardians and their children to come visit the school, and learn more about our commitment to providing an academically excellent and faith-filled education for the children of our community.



Spread the word to your friends and neighbors and tell them to give our principal, Carol Glasgow, a call for more information about our school.

▶ Open House and Tours will be held on Sunday, January 30, right after Mass until 1:30 pm.

▶ New this year...all teachers will be in their classrooms to meet prospective new parents and students!

▶ Priority registration is offered for registered parishioners at The Madeleine until January 31, 4:00 pm.

▶ To receive in-parish tuition rates, families must be registered and active in the parish for at least 6 months prior to enrollment.  
▶ Financial aid available. Please contact the school office for details.

Visit [www.themadeleine.edu/admissions](http://www.themadeleine.edu/admissions) for more information, or contact Carol Glasgow, [cglasgow@themadeleine.edu](mailto:cglasgow@themadeleine.edu) or 503-288-9197.

## Third Sunday in Ordinary Time

IN TODAY'S GOSPEL, Jesus reveals who he is and what his mission is in the synagogue of his own hometown. Paul's letter to the Corinthians tells us that we are all united in this work, no matter who we are or what our role might be. Jesus' mission is ours because we are members of his one body. Do we know and embrace the role that is uniquely ours? Could we stand up and identify our own part in Jesus' work?

## PRAY FOR OUR FAITHFULLY DEPARTED

Steve Judge  
Tom Foster  
Faye Marchant  
Nilsa Nippolt

Dorothy Baker  
David Kimball  
John Rosenthal

## PRAYER REQUESTS

For those who are ill, or in need of our prayers

Patrick Jasper

Marty Foster

## WORSHIP & PRAYER

01/25, Tues. . . . . Hal † and Vivian Hunerlach  
01/26, Weds. . . . . Steve Judge †  
01/27, Thurs. . . . . Daniel and Caroline Fenzl  
01/28, Fri. . . . . Ismael Gallegos †  
01/29, Sat. . . . . Phil O'Grady †  
01/30, Sun. 8:00 am The Madeleine Community  
10:00 am. . . . . Joan Brenner



Whereas SOLVE recognizes the importance of clean neighborhoods, school yards, parks, and natural places throughout Oregon.

Whereas, the Growing a Greener Generation program was established to help schools and youth organizations learn about the importance of caring for our environment by reducing our use of disposable items, recycling when we can, and cleaning up litter.

Therefore, SOLVE's recognizes

### The Madeleine School and Parish

for successfully meeting the requirements and expectations for Growing a Greener Generation program participants. Thank you for your help taking care of Oregon.

*Monica Kelly*  
Monica Kelly, Program Manager, SOLVE

## CLEAN Club recognized by SOLVE

*Led by our school's student-run CLEAN Club, The Madeleine has been recognized as part of SOLVE's Growing a Greener Generation program. The club will be organizing four 2022 events in partnership with SOLVE. For more information or to get involved, contact Ann Hart, [ahart@themadeleine.edu](mailto:ahart@themadeleine.edu)*

## Inside this week's bulletin:

- ▶ **The Madeleine School Quick Facts**—With our parish school's Open House next weekend, flip to Page 5 to get the skinny on some of the things that make The Madeleine School—and Catholic education in general—so great.
- ▶ **Music Notes**—"The Triple Crown of Ordinary Time" talks about a weekend that is far from ordinary...the commemoration of Dr. Martin Luther King, Jr., Week of Christian Unity and Protection of the Unborn Children

# Calendar This Week

## SUNDAY, JANUARY 23

9:00 am: RCIA—St. Catherine Rm

10:00 am: Mass—Church

 **IN-PERSON**  **LIVESTREAM**

11:30 am: Laudato Si'—Zoom

## TUESDAY, JANUARY 25

8:00 am: Mass—Church

9:00 am: Adoration—Church

## WEDNESDAY, JANUARY 26

8:00 am: Mass—Church

7:00 pm: Madeleine Choir Rehearsal

## THURSDAY, JANUARY 27

2:00 pm: Mass—Church

 **IN-PERSON**  **LIVESTREAM**

## FRIDAY, JANUARY 28

8:00 am: Mass—Church

## SATURDAY, JANUARY 29

5:00 pm: Mass—Church

 **IN-PERSON ONLY**

## SUNDAY, JANUARY 30

8:00 am: Mass—Church

 **IN-PERSON ONLY**

9:00 am: RCIA—St. Catherine Rm

9:00 am: Confirmation Class—Fireside Rm

10:00 am: Mass—Church

 **IN-PERSON**  **LIVESTREAM**

11:30 am: School Open House

### ACCESSING THE MADELEINE IN TIME OF COVID

► **Mass livestreams:**

[www.youtube.com/themadeleineparish](http://www.youtube.com/themadeleineparish)

► **Parish Emails:** To sign up, visit

[www.themadeleine.edu/email](mailto:www.themadeleine.edu/email)

## Care for our Common Home *Laudato Si'*

### GREEN TIPS FOR A MORE SUSTAINABLE LIFESTYLE

Winter, the perfect time to warm up with a hot drink! What is the most ecological choice? Certainly, buying herbal tea in bulk is less expensive and requires less packaging. Bulk herbal teas are more fragrant as well, because they haven't been stored for as long. More and more shops are specializing in bulk regular tea and herbal tea. Give them a try. To brew, use an infuser spoon, a tea ball or a teapot. They are reusable and easy to find. In addition to the environmental aspect, you get to enjoy a greater variety of drinks by having camomile and vanilla one night, and camomile and linden the next!

## PARISH LIFE

### INVITATION TO REFLECT ON SYNOD PROCESS

Therese Fenzl, Director of Spiritual Ministries, is facilitating two Zoom sessions to reflect on Pope Francis' invitation to Synod from his book *Let Us Dream*, pp. 81-94. These sessions will include Scripture, faith sharing and prayer. In the first session we will focus on pp. 81-86. The focus of the second session will be pp. 87-94. You do not have to have the book to attend. You are welcome to attend both sessions or one session. Please send your name and email to: [tfenzl@themadeleine.edu](mailto:tfenzl@themadeleine.edu)

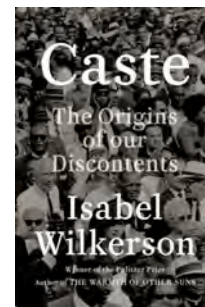
► Monday, January 24, 6:30-7:30 pm

► Monday, January 31, 6:30-7:30 pm

### MADELEINE BOOK CLUB

We cordially invite you to join our group for opportunities to connect with other readers for great book discussions and camaraderie. We are currently reading *Caste*, by Isabel Wilkerson to be discussed in February.

For details, please contact: Gretchen Stevenson, MBC Ministry Coordinator, 503-312-6834 or [gypsyfrau47@yahoo.com](mailto:gypsyfrau47@yahoo.com)



## GUITARIST YURI LIBERZON CONCERT AT THE MADELEINE

February 5, 7:00 pm • Old Church • Portion of ticket sales benefit The Madeleine

Classical Guitarist Yuri Liberzon, a rising star in the classical guitar world, will present a concert in The Old Church at The Madeleine on February 5, 7:00 pm.

Launching the Faces of the Guitar Series of CDZ Collegium Musica, his program will consist of his own published arrangements of Bach Violin Sonatas, works by Leo Brower, and a premier performance of works by Konstantin Vassiliev, which he recently completed on the Naxos label. These exciting new virtuosic works by Russian composer Konstantin Vassiliev are thoroughly modern and appealing, containing a wonderful synthesis of classical, American Jazz, and Russian folk music. (An interesting side note, director Dr. Peter Zisa is a former Music teacher at The Madeleine School.)

Born in Russia, raised in Israel, Yuri has been described as "unquestionably an outstanding talent and certainly one of our very top guitarists" (Manuel Barrueco, Peabody Conservatory of Music).

Visit [www.CdzCollegiumMusica.org](http://www.CdzCollegiumMusica.org) for more information and tickets

**Proof of COVID-19 vaccination or proof of negative COVID-19 test result is required for admittance of adults. Masks are required.**



# THE TRIPLE CROWN OF ORDINARY TIME

Tucked away between the second and third Sundays of Ordinary Time is a “triple crown” of events that embody our life as Christians.

The first is, of course, the commemoration of civil-rights leader and Baptist minister Martin Luther King, Jr. It is noteworthy that throughout his life Dr. King always recognized the power of music as an “instrument of change.” With a natural affinity for

gospel music, King was also influenced by the power of jazz, saying: God has wrought many things out of oppression. He has endowed his creatures with the capacity to create, and from this capacity has flowed the sweet songs of sorrow and joy that have allowed man to cope with his environment and many different situations. Jazz speaks for life. The blues tell the story of life’s difficulties, and if you think for a moment, you will realize that they take the hardest realities of life and put them into music, only to come out with some new hope or sense of triumph. King’s appreciation of music is reflected across all genres. In 1969, legendary pianist Dave Brubeck wrote the cantata, “The Gates of Justice”—a cross-over jazz/classical piece for choir and orchestra with text from Dr. King, Hebrew liturgical texts, the Bible, and additional lyrics by Brubeck’s wife, Iola. Brubeck referred to this piece as “the brotherhood of man,” citing King as he wrote: “If we don’t live together as brothers, we will die together as fools.” (As a side note, a few years ago Bravo! Concerts Northwest performed selections from this powerful work right here at The Madeleine Church.) Ultimately true to his roots, King’s favorite gospel song was “Precious, Lord” by Thomas Dorsey. Dorsey wrote “Precious Lord” in response to his inconsolable grief at the death of his wife and infant son at

childbirth. At King’s request, the great gospel singer Mahalia Jackson sang it numerous times at civil rights rallies, and at King’s funeral on April 1968.



There follows the Week of Prayer for Christian Unity (Jan. 18-22, 2022)—historically a time when Christians from all over the world unite to pray for Christian unity. This year’s theme, the Epiphany, was selected by the Middle East Council of Churches in Lebanon. In the Eastern Churches, the Magi’s visit to Bethlehem is joined to the Baptism of Christ—a common testimony to all Christians near and far. Beset by continual conflict, strife and oppression, the Christians of the Middle East continue to yearn for a light to lead the way to Jesus, who is the light that overcomes darkness.

This week wraps up on January 22 with the UCCB’s National Day of Prayer for the Legal Protection of Unborn Children. Across the pond, one of the most beloved “pro-life turned politician” singers continues to be Dana Scallan. As a successful Irish “pop” singer in the 70’s & 80’s, Dana’s encounter with Mother Angelica at EWTN prompted a move to the United States in 1991 and launched a world-wide platform for her into the pro-life movement and subsequent position back in the Irish parliament. Perhaps it is Dana’s popular “We Are One Body” that aptly summarizes this “triple crown” of events this week: “We are one body, one body in Christ; and we do not stand alone. We are one body, one body in Christ; and he came that we might have life.”

*A great prayer for life is urgently needed, a prayer which will rise up throughout the world.*

*Pope Saint John Paul II*

—Maria Manzo

## WEEKLY MASS TIMES

### Masses:

Tuesday, Wednesday, Friday . . . . . 8:00 am  
 Thursday (During School) . . . . . 2:00 pm  
 Saturday Vigil . . . . . 5:00 pm  
 Sunday . . . . . 8:00 am, 10:00 am

### Notes:

► Livestream 10:00 am Sunday and 2:00 pm Thursday at [youtube.com/themadeleineparish](https://youtube.com/themadeleineparish)

**Penance** . . . . . By appointment; call Parish Office

## PARISH OFFICE

**Hours** . . . . . Monday–Friday, 10:00 am–3:00 pm

**Phone:** 503-281-5777 . . . . . **Fax:** 503-281-0673

**School Office.** . . . . . 503-288-9197

## PARISH STAFF

**Rev. Mike Biewend**—Pastor  
[fathermike@themadeleine.edu](mailto:fathermike@themadeleine.edu) . . . . . ext. 111

**Deacon Mike O’Mahoney**—Permanent Deacon  
[deaconmike@themadeleine.edu](mailto:deaconmike@themadeleine.edu)

**Carol Glasgow**—School Principal  
[cglasgow@themadeleine.edu](mailto:cglasgow@themadeleine.edu) . . . . . 503-288-9197

**John Garrow**—Business Manager  
[jgarrow@themadeleine.edu](mailto:jgarrow@themadeleine.edu) . . . . . ext. 118

**Darlene Maurer**—Pastoral Assistant  
[dmaurer@themadeleine.edu](mailto:dmaurer@themadeleine.edu) . . . . . ext. 125

**Therese Fenzl**—Director of Spiritual Ministries  
[tfenzl@themadeleine.edu](mailto:tfenzl@themadeleine.edu) . . . . . ext. 116

**Maria Manzo**—Director of Music  
[mmanzo@themadeleine.edu](mailto:mmanzo@themadeleine.edu) . . . . . ext. 113

**Ann Hart**—Events Manager  
[ahart@themadeleine.edu](mailto:ahart@themadeleine.edu)

**Allison Blakemore**—Bookkeeper  
[ablakemore@themadeleine.edu](mailto:ablakemore@themadeleine.edu) . . . . . ext. 119

**Mary Prusso**—Registration  
[mprusso@themadeleine.edu](mailto:mprusso@themadeleine.edu) . . . . . ext. 112

**Julie Kupers**—Special Events  
[jkupers@themadeleine.edu](mailto:jkupers@themadeleine.edu) . . . . . 720-936-5635

**Janeen Reilly**—Parish Administrator  
[jreilly@themadeleine.edu](mailto:jreilly@themadeleine.edu) . . . . . ext. 110

**Terry Silva**—Facilities Support  
[tsilva@themadeleine.edu](mailto:tsilva@themadeleine.edu) . . . . . ext. 117

**Rich Hammons**—Director of Communications  
[rhammons@themadeleine.edu](mailto:rhammons@themadeleine.edu) . . . . . ext. 129

## SACRAMENTS

**Marriages, Funerals, Anointing of the Sick**—Fr. Mike . . . . . ext. 111

**Infant Baptism**—Darlene Maurer . . . . . ext. 125

**First Reconciliation, First Eucharist**—Trisha Mumm . . . . . ext. 127

**RCIA**—Christi Bohmbach, [rcia@themadeleine.edu](mailto:rcia@themadeleine.edu)

**Confirmation**—Fr. Mike . . . . . ext. 111

## COUNCILS & CONTACTS

**Pastoral Council**—Meg Scharle

**Finance Council**—Jim Jones. . . . . 503-284-3301

**Buildings & Grounds**—Erin Couch . . . . . 503-281-9575

**School Advisory**—Eric Robinson . . . . . 971-227-3772

**Facility Requests**—[themadeleine.edu/facilities](https://themadeleine.edu/facilities)

**Maintenance Requests**—John Garrow  
[jgarrow@themadeleine.edu](mailto:jgarrow@themadeleine.edu) . . . . . ext. 118

**Bulletin submissions due 5:00 pm Tuesday**

Email to [bulletin@themadeleine.edu](mailto:bulletin@themadeleine.edu)



**In this Sunday’s Gospel, Jesus reads the words of Scripture:** “The Spirit of the Lord is upon me, because he has anointed me to bring glad tidings to the poor.” In the month of January, through your gifts, the Society of St. Vincent de Paul was able to assist 10 families, providing food, help for utility, rent and transportation. Thank you! .

—Mary Clare O’Brien, 503-309-7639

# POPE FRANCIS ANNOUNCES A SYNOD ON SYNODALITY

We invite and encourage your participation

*“It is precisely this path of synodality which God expects of the Church of the third millennium. Are we prepared for the adventure of this journey?”*

—Pope Francis

Our Holy Father Pope Francis has invited the Catholic Church worldwide to embark on a journey together—Synod on Synodality (formally known as “For a Synodal Church: Communion, Participation, and Mission”). In 2022, through listening and discernment, the entire people of God will be called to contribute to a process by which the Church deepens in understanding its mission and future. We will travel together on a journey of spiritual discernment guided by God’s word and the Holy Spirit. It is a grace-filled event and a process of healing.

## What is a Synod?

Formally speaking, a Synod is a meeting of bishops gathered to discuss a topic of theological or pastoral significance, and culminating in a document of advice or counsel to the Pope. A Synod is the mechanism by which the Church begins this important work. However, it is not just a convening of Bishops reflecting on a particular topic and advising the Pope. Rather, a Synod is a journey of discernment in which the people of God are called to pray and reflect upon the Holy Spirit’s will for the Church. Through our listening and sharing, we will seek to understand what the Holy Spirit’s will is for the Church. Pope Francis extends the invitation to the entire Church, and promises to intently listen for understanding and the promptings of the Holy Spirit.

## What do we mean by Synodality and what is its purpose?

Simply stated, Synodality is discerning how the Holy Spirit is moving through and with the Body of Christ, so that we may continue fulfilling our mission to evangelize in the world. Pope Francis stated his intent for this particular Synod



as a “*Time to look others in the eye and listen to what they have to say, to build rapport, to be sensitive to the questions of our sisters and brothers, to let ourselves be enriched by the variety of charisms, vocations, and ministries*” (Homily, October 10, 2021). It’s a personal invitation extended to each of us for shaping the future Church.

Three verbs define the path for this Synod—encounter, listen, and discern—and these two questions will lead us in doing that:

- ▶ Are we good at listening?
- ▶ How good is the “hearing” of our heart?

If we approach the Synod with sincerity, we are sure to be amazed by the ways in which the Holy Spirit leads us to fresh paths and new ways of thinking and speaking.

In the spirit of Synodality, Pope Francis has challenged us to “... *not soundproof our hearts; let us not remain barricaded in our certainties. Certainties often close us off. Let us listen to one another*” (Homily, October 10, 2021).

## When will I be invited to participate in this Synod?

As a signal of its importance, Pope Francis launched this two-year global

Synod consultation process in October 2021, and it concludes in Rome in October 2023. At the direction of Archbishop Sample and the Synod Steering Committee, we will begin preparations in January 2022.

## Here is a preliminary timeline:

Now until...

- ▶ **August 15**—Prayer Phase.
- ▶ **January 20**—Virtual workshop for Archdiocesan pastors, pastoral council chairpersons, religious superiors, apostolate directors, and Catholic leaders.
- ▶ **February & March**—Parish Participation Phase.
- ▶ **April & May**—Vicariate (regional) Participation Phase.
- ▶ **June**—Archdiocesan Discernment Phase.
- ▶ **July**—Preparation of Report and Submission to U. S. Bishops.
- ▶ **August 15**—Conclusion of Local Participation in the Synod.

## How is The Madeleine Parish preparing for this Synod?

Prayer and adoration will form the foundation of the Archdiocese of Portland’s Synod discernment process. Discernment gatherings will take place at three levels: parish, vicariate (regional), and diocesan. As a parish (and throughout the Archdiocese), we will be praying the special Prayer for The Synod on Synodality found on the inside cover of the Breaking Bread books. Copies of the prayer card will also be available for taking home and including in daily devotions.

During the parish phase, pastors, with the help of Pastoral Council members and others, will organize discernment sessions. During this phase, all are invited and encouraged to participate in the Synod.

## How will you respond to this important invitation?

Can we count on you to participate in this important work?

“*Let us not miss out on the grace-filled opportunities born of encounter, listening, and discernment. In the joyful conviction that, even as we seek the Lord, he always comes with his love to meet us first*” (Pope Francis’ Homily, October 10, 2021).

# Academic Excellence and Faith-Filled Education

**Catholic Schools Week is Jan. 30–Feb. 4 • Special Mass on Sunday, January 30**



Catholic Schools Week highlights and celebrates all Catholic Schools, but especially our very own, The Madeleine School!

Catholic schools offer academic excellence and faith-filled education for students nationwide.

National test scores, high school graduation rates, college attendance and other data show that Catholic schools frequently outperform schools in both the public and private sectors.

For the 2022-23 academic year, The Madeleine School will hold an **Open House on Sunday, January 30, 11:30 am–1:30 pm**. For more information, see front page of this week's bulletin, visit [www.themadeleine.edu/enroll](http://www.themadeleine.edu/enroll), or contact school principal, Carol Glasgow by email to [cglasgow@themadeleine.edu](mailto:cglasgow@themadeleine.edu) or by phone at 503-288-9197.

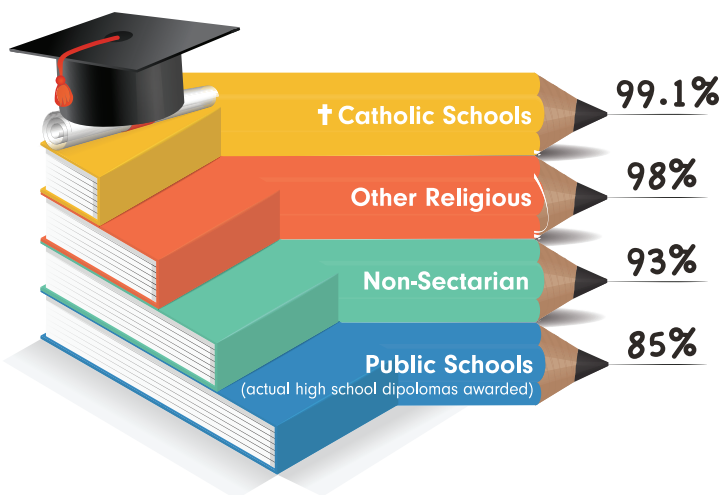
## THE MADELEINE SCHOOL QUICK FACTS

- † Accredited by the Western Catholic Education Association
- † Highly developed Science, Math, Music and Arts curriculum with science lab and musical instruments for every student
- † One-to-one technology in Middle School; technology integrated into lessons and activities; computer lab
- † Teacher aides in K-3 classrooms
- † Hot lunch available 5 days per week\*
- † Reading and learning specialists on campus 5 days per week
- † Dedicated specialist teachers for Music, Art, Science, PE and Technology
- † Counselor on campus
- † Numerous student activities, including CLEAN Club, after-school choir, student government and yearbook
- † On-site before- and after-school care program\*
- † Inclusive playground for children of all mobilities

*\* Offered in years prior to 2021-22, and anticipated to be offered in 2022-23 depending on COVID protocols at that time.*

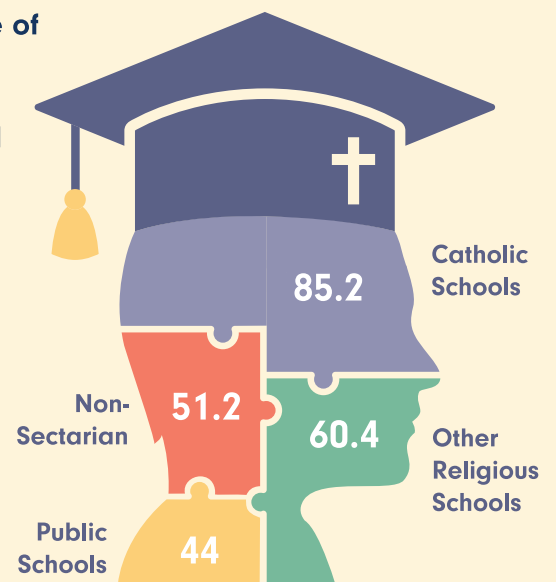
### U.S. Graduation Rates

A look at national high school graduation rates.



Source: Broughman, S.P., Swain, N.L. (2019); Stillwell, R., and Sable, J. (2018-2019).

### Percentage of high school graduates who attend a four-year college



Sources: Broughman, S.P., Kincel, B., and Peterson, J. (2019); McFarland et al. (2019).

# RECYCLING PROGRAMS EXPANDED AT THE MADELEINE

Marked collection bins in the breezeway facing 23rd Ave.

The Madeleine's Laudato Si' Circle and Care for Creation Ministry have joined with U. S. based recycler, Terracycle, to offer our parish, school, and community opportunities to responsibly recycle specific items (primarily plastics) not generally handled at curbside. Terracycle has added more manufacturers to its program, and in turn, we have expanded our recycling offerings. Here is a current listing of what we are collecting. Please keep this in mind:

- ▶ Do not include garbage or items not specifically mentioned in the descriptions.
- ▶ Empty containers of contents. No need to wash first; \* ensure packaging is dry.



## STYROFOAM AND POLYSTYRENE

We have identified a local recycler of Styrofoam and Polystyrene (anything marked #6 like block packaging, meat trays, and to-go containers).

\*Please thoroughly wash and dry food containers



## METAL-BASED COOKWARE AND CUTLERY

All brands of metal-based cookware, bakeware and cutlery (non-stick Aluminum, Stainless Steel, Carbon Steel, Cast Iron). Please make sure items are thoroughly clean and dry.



## SWIFFER REFILLS



Swiffer only brands of Sweeper™ Dry, Wet, and XL Refills, WetJet Refills™, and Duster™ Refills.

## LATE JULY® SNACKS

All Late July® snack packaging as seen in these examples. Limited to Late July brand only.



## HAIR AND SKIN CARE/COSMETICS

All brands. Hair care packaging (bottles/caps of shampoo and conditioner, hair gel tubes/caps, hair spray triggers, hair paste caps). Skin care packaging (lip balm tubes/caps, soap dispensers/tubes, bottles/caps of body wash and lotion dispensers). Cosmetics packaging (lipstick cases, lip gloss tubes, mascara tubes, eye shadow cases, eyeliner pencils, foundation packaging, powder cases).



## FOOD STORAGE

All brands of well-used plastic and glass food storage containers.



## GILLETTE® AND VENUS RAZORS AND RAZOR BLADES

All brands of blades and razors (systems and disposable units, and replaceable-blade cartridge units), rigid plastic packaging, and flexible plastic bag packaging.



## CIGARETTE BUTTS, SANTA FE NATURAL TOBACCO COMPANY

All brands of fully extinguished cigarettes (and ashes) and tobacco products, including filters, plastic packaging, inner foil packaging, rolling paper, and loose tobacco pouches.



## BIC WRITING INSTRUMENTS AND PACKAGING

All brands of empty writing instruments, glue sticks, water-color dispensers, highlighters, paint sets, and flexible packaging.



## OFFSITE RECYCLING OPPORTUNITIES FOR FAMILIES

### REDYPER DISPOSABLE DIAPERS

Subscription service for purchasing and recycling Redyper brand disposable diapers through Terracycle

### LOOP

Offers zero-waste packaging of everyday essentials (beauty, health and personal care, grocery, and household essentials) from leading brands (including Haagen-Dazs!) Details at [www.loopstore.com](http://www.loopstore.com)

Details on all programs at  
[www.themadeleine.edu/terracycle](http://www.themadeleine.edu/terracycle)

# The Liturgical Year



## Conversion of St. Paul

**T**he Conversion of St. Paul is one of the Bible's great stories. A man who persecuted Christians joins the group he was targeting. The story appears several times in the New Testament. Saul was traveling on the road to Damascus when he was struck by a blinding light and fell to the ground. Unable to see, he heard the voice of Jesus ask, "Why do you persecute me?" (Acts 9:4). Saul in turn asked, "Who are you, Lord?" (Acts 9:5). Housed by a disciple named Ananias, Saul learned about Jesus Christ, was baptized, and became known as "Paul." Through his travels, preaching, and writing, he became the

most influential of all the followers of Christ. The conversation during his vision symbolizes the stance between God and the average human person: God asks why we do what we do, and we try to penetrate the mystery of God.

The Catholic Church celebrates a feast day in honor of Paul's conversion every year on January 25. There is no historical evidence linking this date to that event. The earliest appearance of January 25 on the Church calendar seems to have commemorated the anniversary of the day that the relics of this apostle were moved from the catacombs to the

Basilica of St. Paul Outside the Walls of Rome. The date later became associated with his conversion, probably because of the universal appeal of Paul's story.


As a feast day, the conversion outranks most other weekdays, but when it falls on a Sunday, the Ordinary Time liturgy takes precedence. However, Pope Benedict XVI made mid-2008 to mid-2009 a special year commemorating the two thousandth anniversary of the birth of St. Paul, and in honor of this event, he authorized the celebration of the Conversion of St. Paul on Sunday, January 25, 2009.

*Bulletin Inserts for the Liturgical Life of the Parish: The Liturgical Year © 2020 Archdiocese of Chicago: Liturgy Training Publications. All rights reserved. Written by Paul Turner.*



**THE MADELEINE  
MARDI GRAS  
FAT TUESDAY • MARCH 1, 2022**

**SAVE THE DATE!  
COVID-SAFE DETAILS  
ARE BEING  
WORKED OUT!**



**9 DAYS FOR LIFE**  
PRAY TO PROTECT HUMAN LIFE!

**JANUARY 19-27, 2022**

9 Days for Life is a novena for the protection of human life. Each day's intention is accompanied by a short reflection and suggested actions to help build a culture of life.

Join today at [www.9daysforlife.com](http://www.9daysforlife.com)!



**3 WAYS TO JOIN**  
✉ 🗨️ 📺

[9DaysforLife.com](http://9DaysforLife.com)



**Timmco**  
INSURANCE

Brian Timm  
Susan Ames | Derek Ames

1615 NE Broadway | 503-288-8818  
www.timmco.com

AUTO | HOME | BUSINESS | LIFE



Sweetly Aimee, LLC  
Custom Wedding and All-Occasion Cakes and Desserts

Aimee Holzschuh  
Parishioner & Parent  
503.998.7368  
www.SweetlyAimee.com



**TIM WALTERS**  
Principal Broker

The most trusted name in Real Estate!

Committed to the NE Portland Neighborhoods

28+ years of experience



503-545-1880 | TimWaltersRealtor@gmail.com | TimWaltersPC.com

**Mark McGinnis**

Parishioner, Parent  
Mortgage Advisor



NMLS 98586  
971-300-0484  
mark.mcginis@spmc.com  
"It's about service!"




**SOCCER CAMP**  
*Bernie Fagan*  
EST. 1983

**T.C. O'LEARY'S**  
a little irish  
PUB

2926 NE Alberta Street  
*A little taste of Ireland!*



Parishioners Tom, Siobhan & Aine O'Leary

**JOHN M. WYNN**  
ATTORNEY AT LAW  
**McGill, Kapranos & Wynn**  
Parishioner



Hollywood Professional Center, 3939 NE Hancock St., Ste. 305  
jmwpxd@qwestoffice.net • 503-287-7333

**PAUL MARRS**  
MORTGAGE BANKER




503 781 2114  
PREMIER MORTGAGE RESOURCES  
CO.NMLS 1169 MLO-5212

**LANCE MARRS**  
PRINCIPAL BROKER



503 701 5323  
PORTLAND MODERN REAL ESTATE  
LICENSED IN OREGON

**JOSÉ MESA AUTO WHOLESALE, LLC**  
"The mobile auto dealer who is always in your neighborhood."  
**YOUR DISCOUNT AUTO RETAILER SINCE 1992!**  
sales@josemesa.com 503-789-0438 www.josemesa.com  
**NEW•USED•BUY•SELL•LEASE•TRADE•CONSIGN•BROKER•APPRAISE**



**Dr. Phil Doleac, PC**  
Orthodontics for all ages  
www.magic-smiles.com

Beaverton Portland Scappoose  
503.644.7009 503.255.1694 503.543.4488

**A CRAFTSMAN'S TOUCH, LLC**  
QUALITY WOOD FLOORS  
INSTALLATION – REFINISHING  
27+ YRS EXPERIENCE CCB #172097  
**NICK STEVENSON 503-380-8962**  
Family Parishioners

**BUY OR SELL**  
OUR TEAM  
CAN HELP!



**JEFF KERSTEN**  
BUYER'S AGENT

(503) 720-9179  
jeff@drewcolemanteam.com




**Retrouvaille**  
A Christian Peer Ministry  
A LIFELINE FOR  
HURTING MARRIAGES

Is your marriage tearing  
you and your family apart?  
Weekends held every February, June &  
October at Mt. Angel Retreat Home  
www.helpourmarriage.com  
**503-704-7382**  
Donated by Kevin & Carol McMenamin

**ANNE C. STEINER**  
ESTATE PLANNING  
ELDER LAW ATTORNEY  
503.946.8361 • 1717 NE 42nd Ave., Suite 2104  
PARISHIONER - [anne.c.steiner@gmail.com](mailto:anne.c.steiner@gmail.com)  
WILLS – TRUSTS – PROBATE  
GUARDIANSHIP – CONSERVATORSHIP



**Beaumont Vision:**  
providing full-service eyecare for all ages, including comprehensive exams, glasses and contacts

Dr. Ann R. Lewis  
Step by to view our unique eyewear  
Most insurances accepted!

4331 NE Fremont St  
Ph: 503-331-3937

**JOHN W. LOBO**  
**PAINTING**  
Custom Interior & Exterior  
Creative Finishes  
503-969-3337 CCB#89027  
Licensed Bonded Insured




Creating customized color palettes to incorporate into your design plan and product choices

503-808-0059  
www.marylevydesigns.com



**PAUL MYERS, Ph.D., LLC**  
PSYCHOTHERAPY, COUNSELING & CONSULTING SERVICES


(503) 381-6685 paulmyersphdpdx@gmail.com  
www.paulmyersphdpdx.com




**THEORY**  
MORTGAGE

Beating Banks Daily

Brian DuVal  
503-850-7667



NMLS 5912, NMLS 1848246



**Ashley**  
REALTY WORKS TEAM

PARISHIONERS, NEIGHBORS, EXPERT REALTORS

**Wick & Karoline Ashley**  
karoline@ashleyrealtyworks.com  
(503) 819-4851  
237 NE Broadway Suite 100




**CITY HOME IMPROVEMENT, Inc.**  
Kitchens | Bathrooms | Additions  
Since 1956

Please visit our showroom or call  
for a free in-home estimate

**503-253-7591**  
www.cityhomeimprovementinc.com  
8811 NE Sandy Blvd. Portland, OR 97220



**WILLAMETTE**  
FINANCIAL ADVISORS, LLC  
PERSONALIZED ADVICE FROM TRUSTED ADVISORS

**James M Jones**  
Financial Advisor, CFP®  
Parishioner  
Direct 503.284.9200  
Office 503.7470306  
jimj@wfinadv.com




Whole house remodels  
• Kitchens • Bathrooms  
• Basements • Additions  
In-house architecture & design

Nathalie Roloff, Parishioner

**503.245.0685**  
rolloffconstruction.com  
4300 NE Fremont #130



CCB #140721  
WA#ROLOFC1873KU  
**ROLOFF**  
CONSTRUCTION