



# THIS WEEK AT THE MADELEINE

Furthering the Reign of God, Where All Are Welcome • January 15-16, 2022



Knights of Columbus Drive-In Sock Drive last year. Please join them again this year, January 22 in the Parish Hall Driveway for this year's event, benefitting Transition Projects and St. André Bessette.

## ANNUAL DRIVE-IN SOCK DRIVE: JANUARY 22

Please join us in helping our neighbors in need this winter. The Madeleine Knights of Columbus is sponsoring the annual sock drive-by Saturday, January 22, in the Parish Center turn-around.

Just drive by and drop off your donation or cash between 10:00 am and 1:00 pm. Blue barrels will also be in the Church vestibule and The Madeleine School beginning January 16. This will help keep our most vulnerable neighbors warm during these colder, wetter months.

Please donate wool socks for those in need which will be provided to Transition Projects and Saint André Bessette. Look for socks with a wool blend and no cotton. (Costco has good values. If you want, we are collecting cash and will purchase in bulk.)

Can't make it that day? You can drop off sock donations at the Parish Office (drop in the mail slot) or use this Paypal QR code for monetary donations.



## Second Sunday in Ordinary Time

JOHN TELLS US THAT THIS SIGN of Jesus' power took place at the beginning of his ministry at a wedding feast at Cana. Jesus' ministry — from the very start — occurred in real life, addressing real-life concerns. And he continues to enter our real lives as he offers himself to us in so many ways, especially in the bread and wine of the Eucharist. He generously provides what we need to exercise our own gifts for others.

## PRAY FOR OUR FAITHFULLY DEPARTED

Dorothy Baker  
David Kimball  
John Rosenthal

Tom Foster  
Faye Marchant  
Nilsa Nippolt



## Thank you!

Thank you to The Madeleine community for showing my Children of Incarcerated Parents Program the meaning of generosity, care, and love.

We were able to deliver more than 160 gifts this year to our students and their siblings!

I personally delivered many of the beautiful packages and witnessed firsthand the gratitude and the need of these households. Once again you have shown my students the love and grace of The Madeleine community. Thank you and happy new year.

—Marianne Kersten

## PRAYER REQUESTS

For those who are ill, or in need of our prayers

Steve Judge  
Kitt Jordan  
John Endres  
Annie Young

Patrick Jasper  
Marty Foster  
Chad Garvens

## WORSHIP & PRAYER

01/18, Tues. . . . . Halina Mala & Kasia Maly  
01/19, Weds. . . . . Tom Meschner †  
01/20, Thurs. . . . . Marty Foster  
01/21, Fri. . . . . Nilsa Nippolt †  
01/22, Sat. . . . . Bill Mackin †  
01/23, Sun. 8:00 am The Madeleine Community  
10:00 am. . . . . Dorothy Baker †

# Calendar This Week

## SUNDAY, JANUARY 16

► Catholic Communications Collection

8:00 am: Mass—Church

 **IN-PERSON ONLY**

10:00 am: Mass—Church

 **IN-PERSON**  **LIVESTREAM**

## MONDAY, JANUARY 17

► MLK Jr. Day—No School, Parish Office Closed

## TUESDAY, JANUARY 18

8:00 am: Mass—Church

9:00 am: Adoration—Church

7:00 pm: Book Club—Zoom

## WEDNESDAY, JANUARY 19

8:00 am: Mass—Church

7:00 pm: Madeleine Choir Rehearsal

## THURSDAY, JANUARY 20

10:00 am: Book Club—Zoom

2:00 pm: Mass—Church

 **IN-PERSON**  **LIVESTREAM**

6:30 pm: SAC—Zoom

## FRIDAY, JANUARY 21

8:00 am: Mass—Church

## SATURDAY, JANUARY 22

9:00 am: NPM Event with Fr. Driscoll

5:00 pm: Mass—Church

 **IN-PERSON ONLY**

## SUNDAY, JANUARY 23

8:00 am: Mass—Church

 **IN-PERSON ONLY**

9:00 am: RCIA—St. Catherine Rm

10:00 am: Mass—Church

 **IN-PERSON**  **LIVESTREAM**

10:15 am: RCIA—Rectory Dining Rm

11:30 am: Laudato Si'—Zoom

## PARISH OFFICE CLOSED JAN. 17

The Parish Office will be closed on **Monday, January 17** in celebration of Martin Luther King, Jr. Day.

## ACCESSING THE MADELEINE IN TIME OF COVID

### ► Mass livestreams:

[www.youtube.com/themadeleineparish](http://www.youtube.com/themadeleineparish)

### ► Parish Emails: To sign up, visit

[www.themadeleine.edu/email](http://www.themadeleine.edu/email)

## Care for our Common Home *Laudato Si'*

### GREEN TIPS FOR A MORE SUSTAINABLE LIFESTYLE

Winter is a time of high electricity consumption. It's important to reduce our energy use during the peak hours of 4 pm to 8 pm and spread it out over other times. For instance, try to run major appliances like the dryer and dishwasher outside those hours. Just leave a little note on them for later. Some companies, such as Portland General Electric, have programs providing rebates for minimizing residential energy use during peak hours.

Changing how you use the stove can save energy as well. Shut off the burner or the oven five minutes before the end of the cooking time to take advantage of the residual heat. Also, putting the lid on cooking pots can concentrate the heat and save 20% to 30% of the energy. Now that's a hot tip!

## PARISH LIFE

### INVITATION TO REFLECT ON SYNOD PROCESS

Therese Fenzl, Director of Spiritual Ministries, is facilitating two Zoom sessions to reflect on Pope Francis' invitation to Synod from his book *Let Us Dream*, p. 81-94. These sessions will include Scripture, faith sharing and prayer. In the first session we will focus on pages 81-86. The focus of the second session will be pages 87-94. You do not have to have the book to attend. You are welcome to attend both sessions or one session. Please send your name and email to: [tfenzl@themadeleine.edu](mailto:tfenzl@themadeleine.edu)

► Monday, January 24, 6:30-7:30 pm

► Monday, January 31, 6:30-7:30 pm

### NEW YEAR'S RETREAT

Due to surge in COVID cases we canceled our New Year's retreat. We hope to offer it at another time, possibly during Lent.

### MADELEINE BOOK CLUB

We cordially invite you to join our group for opportunities to connect with other readers for great book discussions and camaraderie.

Our January book selection is: *Last Bus to Wisdom* by Ivan Doig

We will be discussing this delightful novel next week. For details, please contact: Gretchen Stevenson, MBC Coordinator 503-312-6834 or [gypsyfrau47@yahoo.com](mailto:gypsyfrau47@yahoo.com)



## THE MADELEINE SCHOOL 2022-23 OPEN HOUSE AND ADMISSIONS

Open House and Tours: Sunday, January 30, 11:30 am-1:30 pm  
Priority registration for parishioners through January 31, 4:00 pm

It's that time of year again...time to start thinking about school enrollment for Fall 2022. We invite all interested parents and guardians and their children to come visit the school, and learn more about our commitment to providing an academically excellent and faith-filled education for the children of our community.

Spread the word to your friends and neighbors and tell them to give our principal, Carol Glasgow, a call for more information about our school.

► Open House and Tours will be held on Sunday, January 30, right after Mass until 1:30 pm.



► New this year...all teachers will be in their classrooms to meet prospective new parents and students!

► Priority registration is offered for registered parishioners at The Madeleine until January 31, 4:00 pm.

► To receive in-parish tuition rates, families must be registered and active in the parish for at least 6 months prior to enrollment.  
► Financial aid available. Please contact the school office for details.

Visit [www.themadeleine.edu/admissions](http://www.themadeleine.edu/admissions) for more information, or contact Carol Glasgow, [cglasgow@themadeleine.edu](mailto:cglasgow@themadeleine.edu) or 503-288-9197.

**Bulletin submissions due end of business on Tuesday  
for that week's edition, [bulletin@themadeleine.edu](mailto:bulletin@themadeleine.edu)**

## THE WEDDING AT CANA (LISTEN TO YOUR MOTHER!)

This week the Church pivots back to Ordinary Time with the vivid imagery of the Wedding at Cana in Galilee. Often referred to as the start of Jesus's public ministry, John's gospel reveals Jesus as both human and divine. At Cana, it is Mary, the mother of God, who notices that the wine has run out. Thankfully, Jesus listens to his mother and performs his first miracle—turning water into wine. From then on, he

is off and running as both God and man! While the moral of this story goes much deeper than the fourth commandment (honor thy mother and father), there is some practical truth to that as well. Before my mother came to live with us, Michael and I would do our usual once a month grocery run to stock up on food and other household items. We would then go to the store only when we ran out of something—not a good formula for eating well as it often meant a late night run to the store to pick up that needed item! Now, my mother is in charge of “the list.” When we are getting low on a certain item, it appears on “the list” on our refrigerator. If we don't pay attention and replenish that item in a timely manner, she will calmly say, “well, it was on the list.” Granted, some of her thinking might be because she is part of the WWII generation, however, if we follow “the list,” we never run out of anything in our household (which is also a miracle of sorts)!

Like Mary (and my mother), there are many ways—both subtle and not so subtle—that the Church helps guide us as we settle back into Ordinary Time. Besides the Scriptures, which give us a lot of insight into the Kingdom of God in the coming weeks, art and environment play an important role into developing an awareness of “liturgical spirituality”



in this cycle of readings. The festive decorations of the Christmas season are replaced with the stark simplicity of Winter—which allows the natural beauty

of the architecture to envelop us during this time. This is often highlighted by greenery that hints at new life to come in the coming months. The priests' vestments, which also change to green, represent the Holy Spirit, life, eternity, and hope. Musically, the Mass setting changes from that of the Christmas season (often accompanied by many instruments) to that which is also simpler. Of course, with such descriptive Scriptures, there are lots of musical opportunities to explore new music and bring back the familiar to our liturgies.

In a non-pandemic year, this weekend you would undoubtedly hear the choral strains of the beautiful, “Ubi Caritas” by Maurice Durufle. Considered a sacred “staple” in choral music and a rite of passage for any good choir, it is based upon the first line of the Gregorian chant “Ubi caritas est vera, Deus ibi est,” which translates to “Where true charity is, God is there.” It is one of four chants in a collection that Durufle composed in 1960. In it, he combines the chant lines in a polyphonic (two or more voices simultaneously, each with an independent melody) setting. The chant is always present in one or more voices. It is rich in subtle harmonies, and clearly invokes the spirituality of plainsong and Durufle's Catholic roots. Suffice to say, although you will not hear it this weekend, you will have another opportunity on Holy Thursday!

It seems this season is not so Ordinary after all. Oh, and by the way—mothers usually do know best!

—Maria Manzo

## WEEKLY MASS TIMES

### Masses:

Tuesday, Wednesday, Friday . . . . . 8:00 am  
Thursday (During school) . . . . . 2:00 pm  
Saturday Vigil . . . . . 5:00 pm  
Sunday . . . . . 8:00 am, 10:00 am

### Notes:

► Livestream 10:00 am Sunday and 2:00 pm Thursday at [youtube.com/themadeleineparish](https://youtube.com/themadeleineparish)

**Penance** . . . . . By appointment; call Parish Office

## PARISH OFFICE

**Hours** . . . . . Monday–Friday, 10:00 am–3:00 pm

**Phone:** 503-281-5777 . . . . . **Fax:** 503-281-0673

**School Office.** . . . . . 503-288-9197

## PARISH STAFF

**Rev. Mike Biewend**—Pastor  
[fathermike@themadeleine.edu](mailto:fathermike@themadeleine.edu) . . . . . ext. 111

**Deacon Mike O'Mahoney**—Permanent Deacon  
[deaconmike@themadeleine.edu](mailto:deaconmike@themadeleine.edu)

**Carol Glasgow**—School Principal  
[cglasgow@themadeleine.edu](mailto:cglasgow@themadeleine.edu) . . . . . 503-288-9197

**John Garrow**—Business Manager  
[jgarrow@themadeleine.edu](mailto:jgarrow@themadeleine.edu) . . . . . ext. 118

**Darlene Maurer**—Pastoral Assistant  
[dmaurer@themadeleine.edu](mailto:dmaurer@themadeleine.edu) . . . . . ext. 125

**Therese Fenzl**—Director of Spiritual Ministries  
[tfenzl@themadeleine.edu](mailto:tfenzl@themadeleine.edu) . . . . . ext. 116

**Maria Manzo**—Director of Music  
[mmanzo@themadeleine.edu](mailto:mmanzo@themadeleine.edu) . . . . . ext. 113

**Ann Hart**—Events Manager  
[ahart@themadeleine.edu](mailto:ahart@themadeleine.edu)

**Allison Blakemore**—Bookkeeper  
[ablakemore@themadeleine.edu](mailto:ablakemore@themadeleine.edu) . . . . . ext. 119

**Mary Prusso**—Registration  
[mprusso@themadeleine.edu](mailto:mprusso@themadeleine.edu) . . . . . ext. 112

**Julie Kupers**—Special Events  
[jkupers@themadeleine.edu](mailto:jkupers@themadeleine.edu) . . . . . 720-936-5635

**Janeen Reilly**—Parish Administrator  
[jreilly@themadeleine.edu](mailto:jreilly@themadeleine.edu) . . . . . ext. 110

**Terry Silva**—Facilities Support  
[tsilva@themadeleine.edu](mailto:tsilva@themadeleine.edu) . . . . . ext. 117

**Rich Hammons**—Director of Communications  
[rhammons@themadeleine.edu](mailto:rhammons@themadeleine.edu) . . . . . ext. 129

## SACRAMENTS

**Marriages, Funerals, Anointing of the Sick**—Fr. Mike . . . . . ext. 111

**Infant Baptism**—Darlene Maurer . . . . . ext. 125

**First Reconciliation, First Eucharist**—Trisha Mumm . . . . . ext. 127

**RCIA**—Christi Bohmbach, [rcia@themadeleine.edu](mailto:rcia@themadeleine.edu)

**Confirmation**—Fr. Mike . . . . . ext. 111

## COUNCILS & CONTACTS

**Pastoral Council**—Meg Scharle

**Finance Council**—Jim Jones. . . . . 503-284-3301

**Buildings & Grounds**—Erin Couch . . . . . 503-281-9575

**School Advisory**—Eric Robinson . . . . . 971-227-3772

**Facility Requests**—[themadeleine.edu/facilities](https://themadeleine.edu/facilities)

**Maintenance Requests**—John Garrow  
[jgarrow@themadeleine.edu](mailto:jgarrow@themadeleine.edu) . . . . . ext. 118

**Bulletin submissions due 5:00 pm Tuesday**

Email to [bulletin@themadeleine.edu](mailto:bulletin@themadeleine.edu)



**In the Gospel today, at the wedding feast in Cana,** Jesus reveals himself to his disciples and they began to believe in him. Everyday, God also gives us signs of his love and so we also can respond in faith and trust. Your gift to the Society of St. Vincent de Paul becomes a sign of God's love to those who are suffering, and you give them reason to believe and to trust.

—Mary Clare O'Brien, 503-309-7639

# POPE FRANCIS ANNOUNCES A SYNOD ON SYNODALITY

## We Invite and Encourage Your Participation

*“It is precisely this path of synodality which God expects of the Church of the third millennium. Are we prepared for the adventure of this journey?”*

—Pope Francis

Our Holy Father Pope Francis has invited the Catholic Church worldwide to embark on a journey together—Synod on Synodality (formally known as “For a Synodal Church: Communion, Participation, and Mission”). In 2022, through listening and discernment, the entire people of God will be called to contribute to a process by which the Church deepens in understanding its mission and future. We will travel together on a journey of spiritual discernment guided by God’s word and the Holy Spirit. It is a grace-filled event and a process of healing.

### What is a Synod?

Formally speaking, a Synod is a meeting of bishops gathered to discuss a topic of theological or pastoral significance, and culminating in a document of advice or counsel to the Pope. A Synod is the mechanism by which the Church begins this important work. However, it is not just a convening of Bishops reflecting on a particular topic and advising the Pope. Rather, a Synod is a journey of discernment in which the people of God are called to pray and reflect upon the Holy Spirit’s will for the Church. Through our listening and sharing, we will seek to understand what the Holy Spirit’s will is for the Church. Pope Francis extends the invitation to the entire Church, and promises to intently listen for understanding and the promptings of the Holy Spirit.

### What do we mean by Synodality and what is its purpose?

Simply stated, Synodality is discerning how the Holy Spirit is moving through and with the Body of Christ, so that we may continue fulfilling our mission to evangelize in the world. Pope Francis stated his intent for this particular Synod



as a “*Time to look others in the eye and listen to what they have to say, to build rapport, to be sensitive to the questions of our sisters and brothers, to let ourselves be enriched by the variety of charisms, vocations, and ministries*” (Homily, October 10, 2021). It’s a personal invitation extended to each of us for shaping the future Church.

Three verbs define the path for this Synod—encounter, listen, and discern—and these two questions will lead us in doing that:

- ▶ Are we good at listening?
- ▶ How good is the “hearing” of our heart?

If we approach the Synod with sincerity, we are sure to be amazed by the ways in which the Holy Spirit leads us to fresh paths and new ways of thinking and speaking.

In the spirit of Synodality, Pope Francis has challenged us to “... *not soundproof our hearts; let us not remain barricaded in our certainties. Certainties often close us off. Let us listen to one another*” (Homily, October 10, 2021).

### When will I be invited to participate in this Synod?

As a signal of its importance, Pope Francis launched this two-year global

Synod consultation process in October 2021, and it concludes in Rome in October 2023. At the direction of Archbishop Sample and the Synod Steering Committee, we will begin preparations in January 2022.

### Here is a preliminary timeline:

Now until...

- ▶ **August 15**—Prayer Phase.
- ▶ **January 20**—Virtual workshop for Archdiocesan pastors, pastoral council chairpersons, religious superiors, apostolate directors, and Catholic leaders.
- ▶ **February & March**—Parish Participation Phase.
- ▶ **April & May**—Vicariate (regional) Participation Phase.
- ▶ **June**—Archdiocesan Discernment Phase.
- ▶ **July**—Preparation of Report and Submission to U. S. Bishops.
- ▶ **August 15**—Conclusion of Local Participation in the Synod.

### How is The Madeleine Parish preparing for this Synod?

Prayer and adoration will form the foundation of the Archdiocese of Portland’s Synod discernment process. Discernment gatherings will take place at three levels: parish, vicariate (regional), and diocesan. As a parish (and throughout the Archdiocese), we will be praying the special Prayer for The Synod on Synodality found on the inside cover of the Breaking Bread books. Copies of the prayer card will also be available for taking home and including in daily devotions.

During the parish phase, pastors, with the help of Pastoral Council members and others, will organize discernment sessions. During this phase, all are invited and encouraged to participate in the Synod.

### How will you respond to this important invitation?

Can we count on you to participate in this important work?

“*Let us not miss out on the grace-filled opportunities born of encounter, listening, and discernment. In the joyful conviction that, even as we seek the Lord, he always comes with his love to meet us first*” (Pope Francis’ Homily, October 10, 2021).

# The Liturgical Year



## Ordinary Time

Ordinary Time, the longest season of the Church year, fills the weeks that do not celebrate a specific aspect of the mystery of Christ (Universal Norms on the Liturgical Year and the General Roman Calendar, 43). It's the no-particular-reason season. Christmas Time honors the birth of Christ. Easter Time rejoices in the Resurrection. Ordinary Time is devoted to the mystery of Christ in all its aspects.

The number of the weeks of Ordinary Time replaces the old counting of weeks "after Epiphany" and "after Pentecost." The old calendar suggested that Pentecost ran for six months. The new calendar gives Pentecost a day. Then we return to Ordinary Time.

At first glance, the principles of Ordinary Time seem basic enough. Start counting the weeks after Christmas Time.

Break for Lent and Easter. Resume after Pentecost and keep counting until Advent. Basically, that's how it works. But we have a few quirks.

For example, there is no "First Sunday in Ordinary Time"; however, there is a first week. Usually Christmas Time ends on a Sunday with the Baptism of the Lord. The lectionary also calls it the First Sunday in Ordinary Time, but it is part of Christmas Time. (Some years the Baptism of the Lord falls on a Monday, but that's another story.) Ordinary Time gets underway on a weekday. When the next Sunday rolls around, we start week two.

On the Tuesday before Ash Wednesday, we see the last of Ordinary Time until after Pentecost. Even then, it emerges only on weekdays. Trinity Sunday always follows Pentecost Sunday, and the

Solemnity of the Most Holy Body and Blood of the Lord comes the next Sunday in the United States. (In countries where this solemnity is a holiday, it falls on a Thursday.) Therefore, when the numbered Sundays in Ordinary Time return in summer, we start out a little higher than where we left off.

Sometimes we skip one or two entire weeks of Ordinary Time during the Easter break. We want to close the Sundays of the year with Christ the King, one week before Advent. Christ the King always falls on the Thirty-Fourth Sunday in Ordinary Time. So, we determine the week number after Pentecost not based on where we left off before Lent, but by counting backwards from Christ the King. One or two weeks may disappear, but Ordinary Time still serves the complete mystery of Christ.

*Bulletin Inserts for the Liturgical Life of the Parish: The Liturgical Year © 2020 Archdiocese of Chicago: Liturgy Training Publications. All rights reserved. Written by Paul Turner.*

## WORLDWIDE MARRIAGE ENCOUNTER:

Are you letting Jesus proclaim the good news to you in your marriage? Sign up today to attend one of the next Worldwide Marriage Encounter Experiences on May 27-29 at Our Lady of Peace Retreat House in Beaverton, Oregon.

To apply for your WWME Experience or search other dates: [rediscoverthespark.org](http://rediscoverthespark.org). For information about WWME call 503-704-0836 or email to [reservations@rediscoverthespark.org](mailto:reservations@rediscoverthespark.org)

## A LIFELINE FOR MARRIAGE

Retrouvaille helps couples through difficult times in their marriages. It is designed to provide the tools to help get your marriage back on track. This program has helped 10's of 1000's of couples experiencing marital difficulty at all levels including disillusionment and deep misery. For confidential information about or to register for the program beginning with a weekend on January 21-23, 2022, please call 1-503-225-9191 or visit [www.helpourmarriage.org](http://www.helpourmarriage.org)



SAVE • THE • DATE

THE MADELEINE  
**MARDI GRAS**  
FAT TUESDAY • MARCH 1

SAVE THE DATE!  
COVID-SAFE  
DETAILS ARE BEING  
WORKED OUT

# 9 DAYS FOR LIFE




PRAY TO PROTECT HUMAN LIFE!

**JANUARY 19-27, 2022**

9 Days for Life is a novena for the protection of human life. Each day's intention is accompanied by a short reflection and suggested actions to help build a culture of life.

Join today at [www.9daysforlife.com](http://www.9daysforlife.com)!

3 WAYS TO JOIN

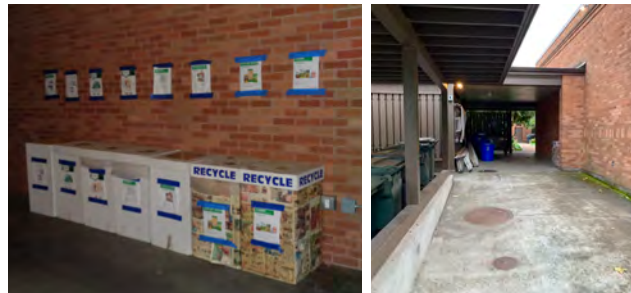
9DaysforLife.com

# RECYCLING PROGRAMS EXPANDED AT THE MADELEINE

Marked collection bins in the breezeway facing 23rd Ave.

The Madeleine's Laudato Si' Circle and Care for Creation Ministry have joined with U. S. based recycler, Terracycle, to offer our parish, school, and community opportunities to responsibly recycle specific items (primarily plastics) not generally handled at curbside. Terracycle has added more manufacturers to its program, and in turn, we have expanded our recycling offerings. Here is a current listing of what we are collecting. Please keep this in mind:

- ▶ Do not include garbage or items not specifically mentioned in the descriptions.
- ▶ Empty containers of contents. No need to wash first; \* ensure packaging is dry.



## STYROFOAM AND POLYSTYRENE

We have identified a local recycler of Styrofoam and Polystyrene (anything marked #6 like block packaging, meat trays, and to-go containers).

\*Please thoroughly wash and dry food containers



## METAL-BASED COOKWARE AND CUTLERY

All brands of metal-based cookware, bakeware and cutlery (non-stick Aluminum, Stainless Steel, Carbon Steel, Cast Iron). Please make sure items are thoroughly clean and dry.



## SWIFFER REFILLS



Swiffer only brands of Sweeper™ Dry, Wet, and XL Refills, WetJet Refills™, and Duster™ Refills.

## LATE JULY® SNACKS

All Late July® snack packaging as seen in these examples. Limited to Late July brand only.



## HAIR AND SKIN CARE/COSMETICS

All brands. Hair care packaging (bottles/caps of shampoo and conditioner, hair gel tubes/caps, hair spray triggers, hair paste caps). Skin care packaging (lip balm tubes/caps, soap dispensers/tubes, bottles/caps of body wash and lotion dispensers). Cosmetics packaging (lipstick cases, lip gloss tubes, mascara tubes, eye shadow cases, eyeliner pencils, foundation packaging, powder cases).



## FOOD STORAGE

All brands of well-used plastic and glass food storage containers.



## GILLETTE® AND VENUS RAZORS AND RAZOR BLADES

All brands of blades and razors (systems and disposable units, and replaceable-blade cartridge units), rigid plastic packaging, and flexible plastic bag packaging.



## CIGARETTE BUTTS, SANTA FE NATURAL TOBACCO COMPANY

All brands of fully extinguished cigarettes (and ashes) and tobacco products, including filters, plastic packaging, inner foil packaging, rolling paper, and loose tobacco pouches.



## BIC WRITING INSTRUMENTS AND PACKAGING

All brands of empty writing instruments, glue sticks, water-color dispensers, highlighters, paint sets, and flexible packaging.



## OFFSITE RECYCLING OPPORTUNITIES FOR FAMILIES

### REDYPER DISPOSABLE DIAPERS

Subscription service for purchasing and recycling Redyper brand disposable diapers through Terracycle

### LOOP

Offers zero-waste packaging of everyday essentials (beauty, health and personal care, grocery, and household essentials) from leading brands (including Haagen-Dazs!) Details at [www.loopstore.com](http://www.loopstore.com)

Details on all programs at  
[www.themadeleine.edu/terracycle](http://www.themadeleine.edu/terracycle)

*The Madeleine Knights of Columbus Council 11682 • Charity-Unity-Fraternity*

**KNIGHTS IN ACTION**

**ACTIVITIES:**

- ▶ The Council will be conducting it's annual "Sock Drive." Donations of wool socks will be accepted and then given to those in need. There will be donation barrels located in the vestibule of the church and also the school. Also, on Saturday, January 22, the Knights will be accepting curbside drop off donations at the Parish Hall driveway turnaround. The dropoff hours will be 10 am to 1 pm.
- ▶ COVID guidelines permitting, the Council will be providing manpower assistance in March for Madi Gras.
- ▶ St. Patrick's Day Dinner. Covid guidelines permitting, the Council is planning the dinner to be held on Saturday, March 12.



**QUICK FACTS:**

- ▶ The Madeleine Council was chartered on December 1, 1995. There was a total of thirty men who made the commitment to join the Knights and help create the Council. The Knights have provided twenty six years of devoted service to the Parish. Since then the Council has grown in numbers with a

dedicated membership. The Council is totally separate from The Madeleine Church and Parish. However, we as a body chose to name our Council "The Madeleine." We have also chosen to be in complete solidarity with our Parish Pastor and support him in whatever he needs.

- ▶ The month of January is "Unity" month. The week of January 18—25 is the Week of Prayer for Christian Unity. Let's all celebrate ecumenism with prayers and acts of kindness to all.
- ▶ Belgian Cardinal Desire-Joseph Mercier, an early twentieth-century pioneer, once said, "We have to encounter one another in order to know one another, to know one another, in order to love one another, and to love one another in order to find unity." (Word Among Us).

Men who are eighteen years of age and older and are practicing Catholics may join the Knights. For more information please call Dan Evans @ 503-701-5581 or Dan O'Donnell @ 503-440-9415.

The Council's next meeting will be Tuesday, February 1, at 7:00 pm in The Madeleine Fireside Room.

A versatile **event oasis** in the heart of **Historic Irvington**

With life getting closer to normal, we invite you to consider The Madeleine for your upcoming event needs.

**THE MADELEINE HALL—**

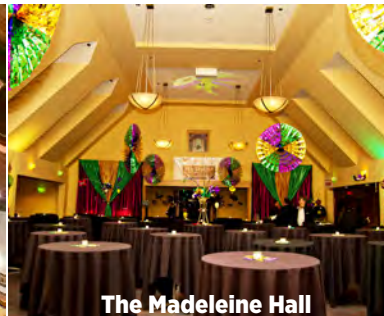
Whether dressed up for a formal gala, decorated for a dance, or setup for a professional dinner, The Madeleine Hall is our largest and most versatile space. The high, gabled ceiling adds a majestic aire, but the unique configuration retains an intimate feel.

**THE FIRESIDE ROOM—**

On its own, The Fireside Room is a warm, cozy space for meetings, talks, recitals and small banquets. It seamlessly pairs with The Madeleine Hall for larger events or as a social area or silent auction space.



**The Old Church**



**The Madeleine Hall**



**St. Catherine Room**



**Fireside Room**

**ST. CATHERINE ROOM—**

This beautiful fellowship room, regaled with historically restored stained glass, is ideal for meetings, seminars or combined with The Old Church for larger events.

From wedding receptions and retreats to auctions, recitals and fundraisers, our versatile spaces—all air conditioned—are beautiful, cost effective and include ample amenities to make your event truly special.

**THE OLD CHURCH—**

After the thoughtfully spectacular \$4.1 million renovation in 2019, **The Old Church at The Madeleine** is available for events from 20 to 200 people in a breathtaking, historic setting. This beautiful space offers brand-new convenience and comfort with an historic 1911 aesthetic.

**Contact Ann Hart, Events Manager**

**ahart@themadeleine.edu**

**or call the Parish Office at 503-281-5777**



**Timmco**  
INSURANCE

Brian Timm  
Susan Ames | Derek Ames

1615 NE Broadway | 503-288-8818  
www.timmco.com

AUTO | HOME | BUSINESS | LIFE



Sweetly Aimee, LLC  
Custom Wedding and All-Occasion Cakes and Desserts

Aimee Holzschuh  
Parishioner & Parent  
503.998.7368  
www.SweetlyAimee.com



**TIM WALTERS**  
Principal Broker

The most trusted name in Real Estate!

Committed to the NE Portland Neighborhoods

28+ years of experience



503-545-1880 | TimWaltersRealtor@gmail.com | TimWaltersPC.com

**Mark McGinnis**

Parishioner, Parent  
Mortgage Advisor



NMLS 98586  
971-300-0484  
mark.mcginis@spmc.com  
"It's about service!"




**SOCCER CAMP**  
*Bernie Fagan*  
EST. 1983

**T.C. O'LEARY'S**  
a little irish  
PUB

2926 NE Alberta Street  
*A little taste of Ireland!*



Parishioners Tom, Siobhan & Aine O'Leary

**JOHN M. WYNN**  
ATTORNEY AT LAW  
**McGill, Kapranos & Wynn**  
Parishioner



Hollywood Professional Center, 3939 NE Hancock St., Ste. 305  
jmwpxd@qwestoffice.net • 503-287-7333

**PAUL MARRS**  
MORTGAGE BANKER




503 781 2114  
PREMIER MORTGAGE RESOURCES  
CO.NMLS 1169 MLO-5212

**LANCE MARRS**  
PRINCIPAL BROKER



503 701 5323  
PORTLAND MODERN REAL ESTATE  
LICENSED IN OREGON

**JOSÉ MESA AUTO WHOLESALE, LLC**  
"The mobile auto dealer who is always in your neighborhood."  
**YOUR DISCOUNT AUTO RETAILER SINCE 1992!**  
sales@josemesa.com 503-789-0438 www.josemesa.com  
**NEW•USED•BUY•SELL•LEASE•TRADE•CONSIGN•BROKER•APPRAISE**



**Dr. Phil Doleac, PC**  
Orthodontics for all ages  
www.magic-smiles.com

Beaverton Portland Scappoose  
503.644.7009 503.255.1694 503.543.4488

**A CRAFTSMAN'S TOUCH, LLC**  
QUALITY WOOD FLOORS  
INSTALLATION - REFINISHING  
27+ YRS EXPERIENCE CCB #172097  
**NICK STEVENSON 503-380-8962**  
Family Parishioners

**BUY OR SELL**  
**OUR TEAM CAN HELP!**



**JEFF KERSTEN**  
BUYER'S AGENT

(503) 720-9179  
jeff@drewcolemanteam.com




**Retrouvaille**  
A Christian Peer Ministry  
A LIFELINE FOR  
HURTING MARRIAGES

Is your marriage tearing you and your family apart?  
Weekends held every February, June & October at Mt. Angel Retreat Home  
**www.helpourmarriage.com**  
**503-704-7382**  
Donated by Kevin & Carol McMenamin

**ANNE C. STEINER**  
ESTATE PLANNING  
ELDER LAW ATTORNEY  
503.946.8361 • 1717 NE 42nd Ave., Suite 2104  
PARISHIONER - [anne.c.steiner@gmail.com](mailto:anne.c.steiner@gmail.com)  
WILLS - TRUSTS - PROBATE  
GUARDIANSHIP - CONSERVATORSHIP



**Beaumont Vision:**  
providing full-service eyecare for all ages, including comprehensive exams, glasses and contacts

Dr. Ann R. Lewis  
*Beaumont Vision*  
Shop by to view our unique eyewear  
Most insurances accepted!

4331 NE Fremont St  
Ph: 503-331-3937

**JOHN W. LOBO PAINTING**  
Custom Interior & Exterior  
Creative Finishes  
503-969-3337 CCB#89027  
Licensed Bonded Insured



Creating customized color palettes to incorporate into your design plan and product choices  
503-808-0059  
www.marylevydesigns.com



**PAUL MYERS, Ph.D., LLC**  
PSYCHOTHERAPY, COUNSELING & CONSULTING SERVICES  
(503) 381-6685 paulmyersphdpdx@gmail.com  
www.paulmyersphdpdx.com



**THEORY**  
MORTGAGE

Beating Banks Daily

Brian DuVal  
503-850-7667  
NMLS 5912, NMLS 1848246



**Ashley**  
REALTY WORKS TEAM

PARISHIONERS, NEIGHBORS, EXPERT REALTORS

**Wick & Karoline Ashley**  
karoline@ashleyrealtyworks.com  
(503) 819-4851  
237 NE Broadway Suite 100




**CITY HOME IMPROVEMENT, Inc.**  
Kitchens | Bathrooms | Additions  
Since 1956

Please visit our showroom or call for a free in-home estimate

**503-253-7591**  
www.cityhomeimprovementinc.com  
8811 NE Sandy Blvd. Portland, OR 97220



**WILLAMETTE**  
FINANCIAL ADVISORS, LLC  
PERSONALIZED ADVICE FROM TRUSTED ADVISORS

**James M Jones**  
Financial Advisor, CFP®  
Parishioner  
Direct 503.284.9200  
Office 503.7470306  
jimj@wfinadv.com




Whole house remodels  
• Kitchens • Bathrooms  
• Basements • Additions  
In-house architecture & design  
Nathalie Roloff, Parishioner

503.245.0685  
rolloffconstruction.com  
4300 NE Fremont #130  
CCB #140721  
WA#ROLOFC1873KU



**ROLOFF**  
CONSTRUCTION