



THIS WEEK AT THE MADELEINE

Furthering the Reign of God, Where All Are Welcome • November 20–21, 2021

MADELEINE MARKETPLACE RETURNS DECEMBER 2

Fun, food, music, shopping, tree lighting, Santa...and BABY GOATS!

We are thrilled to announce the return of The Madeleine Marketplace and Christmas Tree Lighting Thursday December 2 from 2-8 pm. Things will be a little different this year!

Plan to stay for a fun-filled afternoon and evening. Bundle up and stroll through our tents and canopies, and get your shopping started with more than 20 vendors in the Fireside Room (free gift wrapping available, too).



We've got dinner covered

Cook's night off! We will have a food truck (tacos/nachos), plus chili and spring rolls, and fancy hot cocoa...kid and adult versions :)

Entertainment?

A live band and caroling with The Madeleine Choir and Children's Choir,



to help? Call or email Julie Kupers at 720-936-5635 or jkupers@themadeleine.edu

photos with Santa and Mrs. Santa. And of course, the Christmas Tree Lighting at 6:00 pm.

Plus...are you ready for this....a petting zoo with BABY GOATS!

Feel like building? There are still spots available in the Gingerbread House Building contest! Prizes include some fabulous bakery gifts.

Volunteers needed

Help make this night go off without a hitch by signing up for one of our volunteer slots: www.bit.ly/tmp-mmvs

So much cheer rolled into one night! Don't miss this chance to get together again after so much time apart. Mark your calendar and join us!

Questions or want

Bake Sale goodies needed—We need your baked goods for our bake sale! Bake your best cookies, pies, cakes, candies, then bring them to the Rectory on Thursday, December 2 by 10:00 am.

THANKSGIVING DAY MASS, 9:00 AM— COLLECTION FOR ST. VINCENT DE PAUL

Please join us at 9:00 am Thursday

Take some time giving thanks as you start your busy Thanksgiving Day, by joining us at our 9:00 am Mass.

Thanksgiving Collection: St. Vincent de Paul

As is traditional at The Madeleine, the entire Thanksgiving Day Mass collection goes to support the vital works of St. Vincent de Paul, to further their ability to help those with special needs to maintain their homes in a stable environment. The

Madeleine community has always been very generous in supporting this ministry, and we know you will be again this year. You will find special collection envelopes in the pews. Please be generous. You are also encouraged to bring non-perishable food and toiletries to church this day and bring them forward at the time of the collection for the St. Vincent de Paul annual Food Drive.

Get your Advent devotional book at Masses or at the Parish Office. Also available for download at www.themadeleine.edu/advent



Our Lord Jesus Christ, King of the Universe

AS THE LITURGICAL YEAR DRAWS TO A CLOSE, the church includes a yearly warning that this life on earth is transient, a trial run for all eternity. We are reminded that Jesus is not the king of nation states, but a servant who comes to redeem and inspire all humanity. He is a shepherd, a ruler of human hearts, and a king of truth and justice. Is this the year we will finally pay attention, surrender our dependence on temporal success and respond with the witness of our faithful lives?

PRAY FOR OUR FAITHFULLY DEPARTED

Virginia Richards
Patrick Sweeney

Donald Zimmer
Carolyn Kolibaba

PRAYER REQUESTS

For those who are ill, or in need of our prayers

Beth Wills
Conor Schearer

Spencer Shearer

WORSHIP & PRAYER

11/23, Tues. Gordon C. Mason †
11/24, Weds. Miriam Thornburg †
11/25, Thurs. Edward Fenzl & Ethel Keenan †
11/26, Fri. Hal † and Vivian Hunerlach
11/27, Sat. Bert Schall †
11/28, Sun. 8:00 am . The Madeleine Community
10:00 am Griffith & Margaret Marshall
7:00 pm. Bernard P. Ryan †

Calendar This Week

SUNDAY, NOVEMBER 21

8:00 am: Mass—Church

 **IN-PERSON ONLY**

9:00 am: RCIA—St. Catherine Rm

9:00 am: Confirmation Class—Fireside Rm

10:00 am: Mass—Church

 **IN-PERSON**  **LIVESTREAM**

11:30 am: Laudato Si'—Zoom

7:00 pm: Contemplative Mass—Old Church

 **IN-PERSON ONLY**

TUESDAY, NOVEMBER 23

8:00 am: Mass—Church

9:00 am: Adoration—Church

WEDNESDAY, NOVEMBER 24

▶ Parish Office Closed

11:30 School Early Dismissal

8:00 am: Mass—Church

7:00 pm: Madeleine Choir Rehearsal

THURSDAY, NOVEMBER 25

▶ Thanksgiving-No School, Parish Office Closed

9:00 am: Mass—Church

FRIDAY, NOVEMBER 26

▶ No School, Parish Office Closed

8:00 am: Mass—Church

SATURDAY, NOVEMBER 27

5:00 pm: Mass—Church

 **IN-PERSON ONLY**

SUNDAY, NOVEMBER 28

8:00 am: Mass—Church

 **IN-PERSON ONLY**

10:00 am: Mass—Church

 **IN-PERSON**  **LIVESTREAM**

1:00 pm: Carol Nieman prayer service—Old Church

7:00 pm: Contemplative Mass—Old Church

 **IN-PERSON ONLY**

**Parish Office Closed
Wednesday–Friday,
November 24–26
for Thanksgiving**

PARISH LIFE

CLEAN CLUB COMMUNITY CLEAN-UP EVENT

Saturday, November 27 • 9 am-noon

Join us for a school and parish community clean-up event in NW Portland. Spend time together caring for creation and giving thanks for our beautiful earth. Children under 13 welcome with an adult. Masks required. Please contact Ann Hart at ahart@themadeleine.edu for more details and to sign up. We hope you can join us!

ADVENT FAITH SHARING GROUPS

- ▶ Sundays, November 28, December 5 & 12, 11:30 am, St. Catherine Room
- ▶ Mondays, November 29, December 6 & December 13, 6:30 pm, Zoom

Join Therese Fenzl in spiritually preparing for Christmas with the assistance of the parish Advent reflection book.

If attending Monday Zoom sessions, please send name and email address to tfenzl@themadeleine.edu

—*Therese Fenzl, tfenzl@themadeleine.edu*

AUDIO/VIDEO MINISTRY NEEDS YOUR HELP!

As we begin to return to Mass each weekend, we are looking to include to some of the “extras” we’ve had in the past...including the weekly use of our video screens for Breaking Bread references, videos and song lyrics. But we need help running them! This is a very important ministry, as the screens help to enhance our worship experience.

Presentations run on a Macintosh laptop using software similar to Powerpoint—you simply run the presentations by advancing the presentation from screen to screen. The presentations are already built...you don’t need to edit or create them. Just run them. It’s easy! Full training is included. Contact Rich Hammons, rhammons@themadeleine.edu



**Happy 100th
Birthday
Lee Allen
November 18**

THANKSGIVING PRAYER

Lord, we thank you for the goodness of our people and for the spirit of justice that fills this nation. We thank you for the beauty and fullness of the land and the challenge of the cities.

We thank you for our work and our rest, for one another, and for our homes. We thank you, Lord; accept our thanksgiving on this day. We pray and give thanks through Jesus

Christ our Lord.

Amen.

MADELEINE BOOK CLUB

You are most cordially invited to join our genial group!

Would you enjoy opportunities to meet with other readers to discuss some very excellent books? For more information and/or to be added to our email list, please contact our ministry coordinator: Gretchen Stevenson, gypsyfrau47@yahoo.com or 503-312-6834.



MICHAEL ALLAN HARRISON CONCERT

St. Philip Neri Church • November 30

The St. Philip Neri Altar Society invites you to Michael Allen Harrison’s Annual Concert on the Tuesday following Thanksgiving, November 30, at 7:00 pm in the church. SE 16th & Division St. Singer Julianne Johnson will make a guest appearance. Tickets \$20–\$25. Proceeds to the St. Philip Neri Altar Society to help the parish with needed repairs.

MILESTONES

Baptism

Congratulations and welcome to **McKinley Marie Artman** daughter of Ryan and Shelby Artman, who is joining the Church through the sacrament of Baptism this weekend!



Today as we celebrate Christ the King, may we open the door of our heart so wide that we may listen to the voice of Jesus calling us to help build his kingdom here on earth. As you bring your gift to The Society of St. Vincent de Paul, know that you are hearing the words of Jesus and living them out.

—*Mary Clare O'Brien, 503-309-7639*

LIVE IN JOYFUL HOPE

There is a popular phrase that says, “What came first, the chicken or the egg?” A parallel question in composing music may be, “What comes first—the lyrics or the tune?” To some, it may seem that music and lyrics are written solely on divine (or some kind of) inspiration. The tune and words appear magically in one’s head—somehow

they are written down in publishable form—and voila, a song has been born! And while that makes a good story, any composer will tell you that it usually doesn’t happen quite that way.

While there are some who write both words and music, often it is a collaborative process between the lyricist (called a librettist when writing longer vocal works or operas) and composer(s). Sometimes, a third collaborator, a musical arranger, will take the melody and write an arrangement for instruments or voices. Well beyond the musical notation, one has only to look at our Breaking Bread to see the many artistic collaborators and other pertinent information on any given hymn. Beneath the title, you will find the composer listed to the right side of the music. If the music is instead a common hymn tune, it will be listed there as well. The tiny text at the bottom of the music page contains even more information—the lyricist (if other than the musical composer), the publisher and date, the inspiration for the text (such as the Psalms, etc.), and where the original melody may be found (i.e., a common hymn tune or folk melody). You may also see a series of numbers listed. These are called a hymn metre or metrical index



and indicate the rhythm and syllabic structure of the poetry based on each line of the hymn (think back to writing poetry in high school English). This is a handy compositional tool when trying to marry the hymn’s text with an appropriate hymn tune for singing.

This year, our Madeleine Advent Song utilizes the hymn tune called, “Beach Spring.” Attributed to Benjamin F. White, it is from a collection of music from “The Sacred Harp,” which was published in 1844. In your Breaking Bread, the tune is also the basis for the song, “God of Day and God of Darkness.” It is a familiar tune that has been used for other Catholic hymnody as well. The “hymn metre” for this melody is 87 87 D (D=doubled).

As she has since its inception, parishioner Marilyn Robb has written the lyrics for our 2021 Madeleine Advent Song—which is based upon the theme, “Live in Joyful Hope.” By design, her well-crafted lyrics follow a rhyme structure easily adapted to this hymn. As her musical collaborator, my job is to adapt the lyrics to the music for the congregation and to create a simple vocal arrangement for The Madeleine Choir to sing.

I would encourage you to familiarize yourself with the hymn tune and lyrics to our Advent Song “Live in Joyful Hope.” You can find both the lyrics and a recording on the Music Ministry page of The Madeleine website. Practice up, as we will begin singing it the first weekend of the Advent season! What comes first—the lyrics or the tune? You decide!

—Maria Manzo

CALLING ALL MADELEINE CHILDREN SINGERS!

We are excited to announce that The Madeleine Music Ministry is looking for all children at the parish and school between the 3rd and 6th grade to participate in the upcoming Madeleine Children’s Choir (2nd graders by Director’s permission only).

MCC (Madeleine Children’s Choir) will sing lots of fun Advent and Christmas songs as they participate on Thursday, December 2 at The Madeleine Marketplace and on Sunday, December 14 at the 10:00 am Family Mass.

Rehearsals are held Wednesdays, December 1 and December 8 from 2:45-3:15 pm in the Choir Loft. All COVID precautions will be followed. Children will be masked and socially distanced at all rehearsals and performances.

Parents! Please contact Music Director Maria Manzo, mmanzo@themadeleine.edu with any questions or to confirm your child’s participation in our Madeleine Children’s Choir.

WEEKLY MASS TIMES

Masses:

Tuesday, Wednesday, Friday 8:00 am
Thursday (During school) 2:00 pm
Saturday Vigil 5:00 pm
Sunday 8:00 am, 10:00 am, 7:00 pm

Notes:

► Livestream 10:00 am Sunday and 2:00 pm Thursday at youtube.com/themadeleineparish

Penance By appointment; call Parish Office

PARISH OFFICE

Hours Monday–Friday, 10:00 am–3:00 pm

Phone: 503-281-5777 **Fax:** 503-281-0673

School Office 503-288-9197

PARISH STAFF

Rev. Mike Biewend—Pastor
fathermike@themadeleine.edu ext. 111

Deacon Mike O’Mahoney—Permanent Deacon
deaconmike@themadeleine.edu

Carol Glasgow—School Principal
cglasgow@themadeleine.edu . . . 503-288-9197

John Garrow—Business Manager
jgarrow@themadeleine.edu ext. 118

Darlene Maurer—Pastoral Assistant
dmaurer@themadeleine.edu ext. 125

Therese Fenzl—Director of Spiritual Ministries
tfenzl@themadeleine.edu ext. 116

Maria Manzo—Director of Music
mmanzo@themadeleine.edu ext. 113

Ann Hart—Events Manager
ahart@themadeleine.edu

Allison Blakemore—Bookkeeper
ablakemore@themadeleine.edu ext. 119

Mary Prusso—Registration
mprusso@themadeleine.edu ext. 112

Julie Kupers—Special Events
jkupers@themadeleine.edu . . . 720-936-5635

Janeen Reilly—Parish Administrator
jreilly@themadeleine.edu ext. 110

Terry Silva—Facilities Support
tsilva@themadeleine.edu ext. 117

Rich Hammons—Director of Communications
rhammons@themadeleine.edu ext. 129

SACRAMENTS

Marriages, Funerals, Anointing of the Sick—
Fr. Mike ext. 111

Infant Baptism—Darlene Maurer ext. 125

First Reconciliation, First Eucharist—
Trisha Mumm ext. 127

RCIA—Christi Bohmbach, rcia@themadeleine.edu

Confirmation—Fr. Mike ext. 111

COUNCILS & CONTACTS

Pastoral Council—Meg Scharle

Finance Council—Jim Jones. 503-284-3301

Buildings & Grounds—Erin Couch . . . 503-281-9575

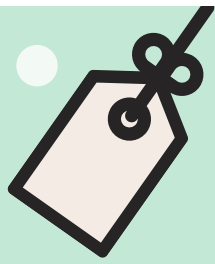
School Advisory—Eric Robinson 971-227-3772

Facility Requests—themadeleine.edu/facilities

Maintenance Requests—John Garrow
jgarrow@themadeleine.edu ext. 118

Bulletin submissions due 5:00 pm Tuesday
Email to bulletin@themadeleine.edu

Visit www.themadeleine.edu/ministries
► Committees & councils ► Ministers’ schedules



The Madeleine Giving Tree 2021

Benefits Children of
Incarcerated Parents

The tradition of The Madeleine Giving Tree will continue this year and the need has never been greater. This project will again give Christmas joy to The Northwest Family Services Children of Incarcerated Parents Program.

These children face countless barriers including abuse, neglect, homelessness and food insecurity, as well as having one or both parents incarcerated. Please help us provide these children with a gift this Christmas.

We will have tags hanging on the outdoor tree in the Parish Hall turnaround beginning Thanksgiving weekend. Please drive through and select a tag and purchase the child's wish and deliver your wrapped gift with the tag securely attached to the rectory office no later than Sunday, December 12.

Thank you for showing these children the true spirit of Christmas and the generous love of our Madeleine community.

For questions please contact

Samantha Furlow at sfurlow@nwfs.org or

503-709-2838



SLEEP IN HEAVENLY PEACE

**SLEEP IN HEAVENLY
PEACE BEDDING
DRIVE—BRING YOUR
DONATIONS IN!**

The Madeleine community always recognizes a good cause when they see one, and has supported Sleep in Heavenly Peace from day one! In Portland and across the U.S., too many boys and girls go without a bed—or even a pillow—to sleep on. These children end up sleeping on couches, blankets, and even floors. This can affect their happiness and health. That's where SHP comes in. We're a group of volunteers dedicated to building, assembling and delivering top-notch bunk beds to children and families in need.

Through Christmas, Sleep in Heavenly Peace is accepting bedding donations at The Madeleine. Please look for the blue bins located in the vestibule. All donated bedding of new twin sheet sets (no extra long please), pillows, and blankets or comforters must be new and still in the original packaging. Thank you Madeleine for the continued support.



ADVENT CANDLES AND WREATH RINGS AVAILABLE AFTER MASSES ON NOVEMBER 20-21 AND 27-28

November 28 marks the first week of Advent and the tradition of the Advent Wreath. After Masses on November 20-21 and 27-28, the parish will again offer candles for purchase (\$5/pack while supplies last) and free brass rings. To complete your Advent wreath, we encourage collecting your own greens. Celebrating Advent in your home is an excellent way to prepare your mind and heart for Christmas.

The Deep Symbolism of the Advent Wreath

The Advent wreath and candles are full of symbolism tied to the Christmas season. The circle of the wreath, which has no beginning or end, symbolizes the eternity of God, the immortality of the soul, and the everlasting life we find in Christ.

The candles also have their own special significance, representing the four weeks of Advent, and one candle is lit each Sunday.



Three of the candles are purple because the color violet is a liturgical color signifying a time of prayer, penance, and sacrifice. The first candle, which is purple, symbolizes hope. It is sometimes called the “Prophecy Candle” in remembrance of the prophets, especially Isaiah, who foretold the birth of

Christ. It represents the expectation felt in anticipation of the coming Messiah.

The second candle, also purple, represents faith. It is called the “Bethlehem Candle” as a reminder of Mary and Joseph’s journey to Bethlehem.

The third candle is pink and symbolizes joy. It is called the “Shepherd’s Candle,” and is pink because rose is a liturgical color for joy. The third Sunday of Advent is Gaudete Sunday and is meant to remind us of the joy that the world experienced at the birth of Jesus, as well as the joy that the faithful have reached the midpoint of Advent.

On the fourth week of Advent, we light the final purple candle to mark the final week of prayer and penance as we wait for the birth of our Savior. This final candle, the “Angel’s Candle,” symbolizes peace. It reminds us of the message of the angels: “Peace on Earth, Good Will Toward Men.”

A versatile **event oasis** in the heart of **Historic Irvington**

With life getting closer to normal, we invite you to consider The Madeleine for your upcoming event needs.

THE MADELEINE HALL—

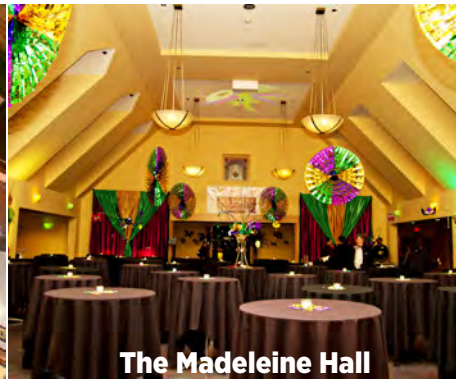
Whether dressed up for a formal gala, decorated for a dance, or setup for a

professional dinner, The Madeleine Hall is our largest and most versatile space. The high, gabled ceiling adds a majestic air, but the unique configuration retains an intimate feel.

THE FIRESIDE ROOM—On its own, The Fireside Room is a warm, cozy space for meetings, talks, recitals and small banquets. It seamlessly pairs with The Madeleine Hall for larger events or as a social area or silent auction space.



The Old Church



The Madeleine Hall



St. Catherine Room



Fireside Room

an historic 1911 aesthetic.

ST. CATHERINE ROOM—

This beautiful fellowship room, regaled with historically restored stained glass, is ideal for meetings, seminars or combined with The Old Church for larger events.

From wedding receptions and retreats to auctions, recitals and fundraisers, our versatile spaces—all air conditioned—are beautiful, cost effective and include ample

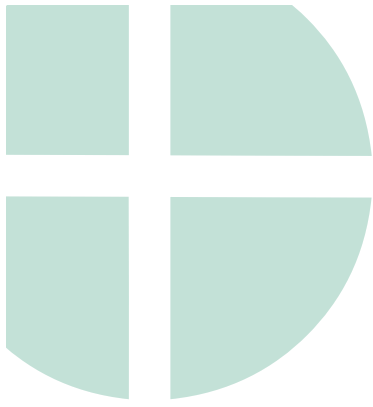
THE OLD CHURCH—After undergoing a thoughtful spectacular \$4.1 million renovation, amenities to make your event truly special.

The Old Church at The Madeleine is available for events from 20 to 200 people in a breathtaking, historic setting. This beautiful space offers brand-new convenience and comfort with

Contact Ann Hart, Events Manager

ahart@themadeleine.edu

or call the Parish Office at 503-281-5777



The Solemnity of Our Lord Jesus Christ, King of the Universe

NOVEMBER 21, 2021

Our Lord Jesus Christ, King of the Universe

On the last Sunday of each liturgical year, the Church celebrates the Solemnity of Our Lord Jesus Christ, King of the Universe, or Christ the King.

Pope Pius XI instituted this feast in 1925 with his encyclical *Quas primas* ("In the first") to respond to growing secularism and atheism. He recognized that attempting to "thrust Jesus Christ and his holy law" out of public life would result in continuing discord among people and nations. This solemnity reminds us that while governments come and go, Christ reigns as King forever.

During the early twentieth century, in Mexico, Russia, and some parts of Europe, militantly secularistic regimes threatened not just the Catholic Church and its faithful but civilization itself. Pope Pius XI's encyclical gave Catholics hope and—while governments around them crumbled—the assurance that Christ the King shall reign forever. Jesus Christ "is very truth, and it is from him that truth must be obediently received by all mankind" (*Quas primas*, 7).

For Christians, when our faith is repeatedly marginalized in public life, we can fall into the habit of compartmentalizing our lives. We love Jesus in our private lives, but we shrink from acknowledging the kingship of Christ in social life. When we celebrate the Solemnity of Christ the King, we declare to the world and remind ourselves that Jesus is the Lord of the Church and of the entire universe.

CCHD: Working on the Margins for Over 50 Years

For over 50 years, the Catholic Campaign for Human Development has worked on the margins by supporting groups that defend worker rights, promote responsible environmental practices, advocate for people with disabilities and immigrants, and support employee-owned businesses. On November 20- 21, many dioceses across the United States will take up the collection to support CCHD. When you participate in this collection, you help fight poverty nationwide and in your community because 25 percent of your contribution stays in your diocese to help local antipoverty initiatives. To learn more about CCHD, please find collection resources and the most current annual report here: <https://www.usccb.org/cchd/collection>. #1church1mission #PowerOfCCHD



A Northwest Christmas

— a Concert of Hope —

Sunday | December 12 | 3:00 pm
The Madeleine Church | Portland OR

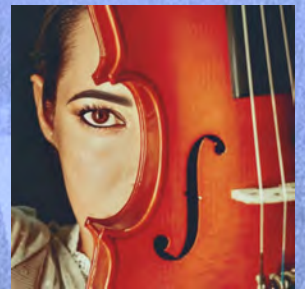
A BENEFIT CONCERT - to bring the JOY of Christmas and the HOPE of Christ to our community - and to support the music programs of Bravo! Concerts Northwest.

Bravo! Northwest Chorale
Rock Violinist Aaron Meyer
Norman Sylvester Blues Band
Northwest Chamber Orchestra
Michael Kissinger Jazz Quartet
Pianist & Conductor Maria Manzo

ADMISSION: FREE. All are welcome. Tickets are required to attend. Get your complimentary tickets beginning Nov. 22 at the Parish Office or at www.bravoconcerts.com.

DONATIONS: are accepted online and at the concert to support this concert and the music programs of Bravo! Concerts Northwest.

Audience Attendance Requirements: Proof of COVID-19 vaccination or proof of negative COVID-19 test result within 72 hours of the concert is required for admittance of adults and children. Masks are required. See www.bravoconcerts.com for full COVID protocols.





Timmco
INSURANCE

Brian Timm
Susan Ames | Derek Ames

1615 NE Broadway | 503-288-8818
www.timmco.com

AUTO | HOME | BUSINESS | LIFE



Sweetly Aimee, LLC
Custom Wedding and All-Occasion Cakes and Desserts
Aimee Holzschuh
Parishioner & Parent
503.998.7368
www.SweetlyAimee.com

TIM WALTERS

Principal Broker



The most trusted name in Real Estate!

Committed to the NE Portland Neighborhoods

28+ years of experience



503-545-1880 | TimWaltersRealtor@gmail.com | TimWaltersPC.com

Mark McGinnis

Parishioner, Parent
Mortgage Advisor

NMLS 98586
971-300-0484
mark.mcginis@spmc.com
"It's about service!"



JOHN M. WYNN
ATTORNEY AT LAW
McGill, Kapranos & Wynn
Parishioner
Hollywood Professional Center, 3939 NE Hancock St., Ste. 305
jmwpxd@qwestoffice.net • 503-287-7333



PAUL MARRS

MORTGAGE BANKER

503 781 2114

PREMIER MORTGAGE RESOURCES

CO.NMLS 1169 MLO-5212



LANCE MARRS

PRINCIPAL BROKER

503 701 5323

PORTLAND MODERN REAL ESTATE

LICENSED IN OREGON



JOSÉ MESA AUTO WHOLESALE, LLC

"The mobile auto dealer who is always in your neighborhood."

YOUR DISCOUNT AUTO RETAILER SINCE 1992!

sales@josemesa.com 503-789-0438 www.josemesa.com

NEW • USED • BUY • SELL • LEASE • TRADE • CONSIGN • BROKER • APPRAISE



Dr. Phil Doleac, PC

Orthodontics for all ages
www.magic-smiles.com

Beaverton Portland Scappoose
503.644.7009 503.255.1694 503.543.4488

A CRAFTSMAN'S TOUCH, LLC

QUALITY WOOD FLOORS

INSTALLATION - REFINISHING

27+ YRS EXPERIENCE CCB #172097

NICK STEVENSON 503-380-8962

Family Parishioners



Dr. Alan R. Lewis

Beaumont Vision

Beaumont Vision:
providing full-service eyecare for all ages, including comprehensive exams, glasses and contacts

Step by step vision care and contact lenses. Most insurance providers accepted!

4331 NE Fremont St

Ph: 503-331-3937

JOHN W. LOBO PAINTING

Custom Interior & Exterior
Creative Finishes
503-969-3337 CCB#89027
Licensed Bonded Insured



Creating customized color palettes to incorporate into your design plan and product choices
503-808-0059
www.marylevydesigns.com



BUY OR SELL
OUR TEAM CAN HELP!

JEFF KERSTEN
BUYER'S AGENT

(503) 720-9179
jeff@drewcoleman.com

THE DREW COLEMAN TEAM
REAL ESTATE

T.C. O'LEARY'S
a little Irish
PUB

2926 NE Alberta Street
Great Food & Drinks
Live Music Sat-Mon
Private Event Space



Retrouvaille
A Christian Peer Ministry
A LIFELINE FOR
HURTING MARRIAGES

Is your marriage tearing you and your family apart?

Weekends held every February, June & October at Mt. Angel Retreat Home

www.helpourmarriage.com

503-704-7382

Donated by Kevin & Carol McMenamin

ANNE C. STEINER
ESTATE PLANNING
ELDER LAW ATTORNEY

503.946.8361 • 1717 NE 42nd Ave., Suite 2104
PARISHIONER - anne.c.steiner@gmail.com

WILLS - TRUSTS - PROBATE
GUARDIANSHIP - CONSERVATORSHIP

PAUL MYERS, Ph.D., LLC
PSYCHOTHERAPY, COUNSELING
& CONSULTING SERVICES
(503) 381-6685 paulmyersphdpdx@gmail.com
www.paulmyersphdpdx.com

THEORY
MORTGAGE

Beating Banks Daily

Brian DuVal
503-850-7667

NMLS 5912, NMLS 1848246



PARISHIONERS, NEIGHBORS, EXPERT REALTORS

Wick & Karoline Ashley
karoline@ashleyrealtyworks.com
(503) 819-4851
237 NE Broadway Suite 100



CITY HOME IMPROVEMENT, Inc.

Kitchens | Bathrooms | Additions
Since 1956

Please visit our showroom or call
for a free in-home estimate

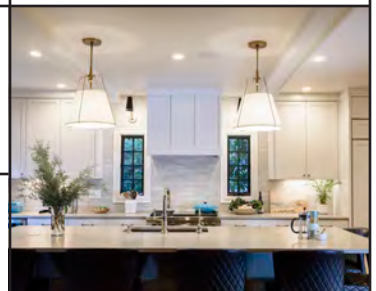
503-253-7591

www.cityhomeimprovementinc.com
8811 NE Sandy Blvd. Portland, OR 97220



James M Jones

Financial Advisor, CFP®
Parishioner
Direct 503.284.9200
Office 503.7470306
jimj@wfinadv.com



Whole house remodels
• Kitchens • Bathrooms
• Basements • Additions
In-house architecture & design

Nathalie Roloff, Parishioner

503.245.0685
rolloffconstruction.com
4300 NE Fremont #130



CCB #140721
WA#ROLOFC1873KU