



# THIS WEEK AT THE MADELEINE

Furthering the Reign of God, Where All Are Welcome • August 14–15, 2021

## PARISH LIFE

### PARISH PICNIC CANCELLED

**Masses continue as scheduled**

Unfortunately, due to the resurgence of COVID-19 and the surge in cases of the Delta variant, Fr. Mike has decided to cancel the Parish Picnic and events scheduled for September 12. “I’ve given it much thought, and in the interest of safety I’ve decided that we will minimize nonessential large events,” said Fr. Mike.

Weekend and weekday in-person Masses

will continue as scheduled. And The Madeleine School is scheduled to open on time in September.

**August 21 Music in the Courtyard cancelled**

In addition, the after-Mass music event scheduled for August 21 has been cancelled as well.

### MASKS REQUIRED AT MASSES

**Vaccinated or not, please wear a mask**

Also due to the surge in COVID infections sweeping across our state and nation, we will abide by Multnomah County and State of Oregon directives that require facemasks in all public indoor settings.

This includes all Masses and other events in The Madeleine buildings, and is required regardless of vaccination status. We know it’s an inconvenience; we thank you for your adherence to this request.

### A NOTE FROM DEACON MIKE

*Dear Wonderful Madeleine Parishioners,*

*Fr. Mike asked me to write a short note to respond to the question, “Where in the world is Deacon Mike?” Thank you for asking and caring.*

*I am well and, like all of us, embracing change in our current COVID environment. You haven’t seen much of me because I’ve chosen not to preside or preach at this time. Instead, I am called to quiet while*

*discerning new directions for our community and church.*

*We continue to prepare meals for a small group of friends living outside and hope to expend this soon. I will keep everyone posted as plans evolve and hope you can join us.*

*Please know I am always just a phone call or email away (or a short walk around the corner!).*

*—In love, Deacon Mike*



### LETTER TO ARCHBISHOP SAMPLE

We are excited to highlight some of the work our Care for Creation ministry has been doing over the past years. With the guidance of Bill Hunter and the *Laudato Si* Circle, a letter was sent to Archbishop Sample outlining all the ways The Madeleine Parish and beyond has been engaged to care for our “Common Home.”

Copies of this important letter are available in the back of the church or in the Parish Office. You can also read it on our website at [www.themadeleine.edu/c4c-letter](http://www.themadeleine.edu/c4c-letter)

We welcome all to join this most important ministry to answer “Pope Francis’ urgent call to: Pray for and with creation, Live more simply, Advocate to protect our common home.”



### The Assumption of Mary

IN THE MIDST OF ORDINARY TIME, the Church offers us a glimpse of eternal life in today’s Feast of the Assumption. In Mary we find a model of discipleship. Mary accepts her role as the mother of Jesus with humility and profound trust. The word of God, planted within the rich soil of Mary’s soul, grows and flowers throughout her life. Mary’s bodily assumption into heaven gives hope that one day our human bodies and divine souls will live as one in heaven’s perfect light.

### PRAY FOR OUR FAITHFULLY DEPARTED

Bruce Dufour—Funeral Mass August 19, 11:00 am  
Mike Wilson Margaret Sullivan  
Gene Feltz

### PRAYER REQUESTS

For those who are ill, or in need of our prayers

Kitt & Corinne Jordan Sylvia Manzo  
Hilda Glasgow Tom Foster

### WORSHIP & PRAYER

- 08/17, Tues. . . . . Matthew Diez †
- 08/18, Weds. . . . . Esther Gallegos †
- 08/19, Thurs. . . . . Tom Foster
- 08/20, Fri. . . . . Alan Love
- 08/21, Sat. . . . . Bill and Mary Mackin †
- 08/22, Sun. 8:00 am The Madeleine Community
- 10:00 am . . . . . Lori Taylor †

# Calendar This Week

## SUNDAY, AUGUST 15

► Assumption of Mary-Holy Day

8:00 am: Mass—Church

 **IN-PERSON ONLY**

10:00 am: Mass—Church

 **IN-PERSON**  **LIVESTREAM**

## TUESDAY, AUGUST 17

8:00 am: Mass—Church

9:00 am: Adoration—Church

## WEDNESDAY, AUGUST 18

8:00 am: Mass—Church

## THURSDAY, AUGUST 19

8:00 am: Mass—Church

11:00 am: Dufour Funeral—Church

## FRIDAY, AUGUST 20

8:00 am: Mass—Church

## SATURDAY, AUGUST 21

5:00 pm: Mass—Church

 **IN-PERSON ONLY**

## SUNDAY, AUGUST 22


8:00 am: Mass—Church


 **IN-PERSON ONLY**

10:00 am: Mass—Church

 **IN-PERSON**  **LIVESTREAM**

## ACCESSING THE MADELEINE IN TIME OF COVID-19

►  **IN-PERSON**—Pre-registration is no longer required; no limits on attendance. Masks required (updated August 11, 2021).

►  **LIVESTREAM**—on our YouTube channel every Sunday at 10:00 am, School Masses, and special events:  
[www.youtube.com/themadeleineparish](http://www.youtube.com/themadeleineparish)

► **Parish Emails:** To sign up, visit  
[www.themadeleine.edu/email](http://www.themadeleine.edu/email)

## PARISH LIFE

### CARING FOR THE CAREGIVER

Virtually every one of us will care for a loved one at some time in our life. Though rewarding, it's not always easy. Nourish for Caregivers is for anyone juggling the challenges of everyday life, health, career and caring for an aging parent, spouse or grandparent, in town or at a distance. Nourish provides caregivers a faith perspective, as well as practical and emotional support, useful tools, and shared experience.

Nourish for Caregivers gives parishes the tools to establish a monthly caregiver ministry. Nourish for Caregivers is a complete, turn-key program which enables a lay-led team to minister to caregivers. With its faith component, Nourish for Caregivers is a pastoral and evangelization tool, bringing family caregivers into the Church and deeper into a relationship with Jesus.

The materials are available in both Spanish and English. If this sounds like something your parish would benefit from, or for more information, please contact Kelsey Bell at [kbell@archdpdx.org](mailto:kbell@archdpdx.org) or 503-233-8399.

### LOOKING FOR WAYS TO SERVE OUR COMMUNITY?

Jesuit Volunteer EnCorps, a program of JVC Northwest, facilitates fulfilling opportunities for service, community, and spiritual formation for adults 50+ who are committed to social and ecological justice. In addition to part-time volunteer service, members meet monthly online or in-person, creating spiritual community through shared reflection. Our values are rooted in the Catholic Ignatian tradition, and JV EnCorps is an inclusive and welcoming community of folks from all faith perspectives.

Learn more about what JV EnCorps service is like:

- JV EnCorps Spotlight: Patty Christopher (Bend, OR)
- JV EnCorps Letter: Jay Lyman (Portland, OR)

Program begins in September. Applications accepted throughout the year. For more info and to apply, visit [www.jvencorps.org](http://www.jvencorps.org)



**In today's Gospel, even the child in Elizabeth's womb leaps with joy** at the approach of Mary, the "lowly servant," who by accepting God's plan for her became blessed for all generations. With love for your neighbors who have nothing, look around your home to see what useful items: canned goods, hygiene, cleaning and laundry supplies to donate and give to the Society of St. Vincent de Paul.

### MADELEINE BOOK CLUB

Summer is the perfect time for reading and relaxing!



The first book scheduled for our 2021-22 reading season is Fr. Mike's choice, *A Pilgrimage to Eternity*, by Timothy Egan. You are invited to join us for discussion of this interesting book at our first meeting in September. For more information and/or to be added to our email list, please contact our MBC coordinator: Gretchen Stevenson, [gypsyfrau47@yahoo.com](mailto:gypsyfrau47@yahoo.com) or 503-312-6834.

### ADVERTISE IN THE MADELEINE PARISH BULLETIN

It's one of the best kept secrets and biggest bargains in the area...Madeleine Parish Bulletin Advertising. The back page of your weekly bulletin is a great place to get the word out to our parish community of your goods or services. This year has been tough on some of our local businesses, so we unexpectedly have some advertising spots available.

► **Affordable**—Starting at just \$110 for the 6 months July through December (\$220 per calendar year). We usually bill 12 months January to December, but will gladly accept your ad July through December this year.

► **Versatile**—Many sizes available...based on our "single" size module, you can stack it two or three high, stretch it two or three wide...whatever size you need to get your brand's message across to our readers.

► **Relatable**—Members of The Madeleine community tend to be very local to their fellow parishioners. By advertising in the bulletin, you're demonstrating that you're an integral part of our parish community.

► **Good Company**—On the back of our bulletin are some of the stalwart companies in our parish and community. Several familiar names have been with us for decades... isn't it time you joined them?

To advertise, contact Rich Hammons, Director of Communications, at [bulletin@themadeleine.edu](mailto:bulletin@themadeleine.edu)

— Mary Clare O'Brien, 503-309-7639



## JOIN OUR NEW CHIME CHOIR

Do you love music? Consider joining our new “Chime Choir” at The Madeleine.

Hand chimes are...

- ▶ Accessible to play. Chimes are set up like a musical keyboard. A basic knowledge in musical rhythm or note reading is helpful, but not required.
- ▶ A safe alternative to singing during COVID. “Chimers” are assigned one

or two individual chimes, which are not shared with one another. Because of this, it is easy to be socially distanced. Masks are mandatory.

- ▶ A great family music ministry—which will bring much joy and beauty to our liturgies!

For info: Maria Manzo, Director of Music at [mmanzo@themadeleine.edu](mailto:mmanzo@themadeleine.edu)

## THE ASSUMPTION OF MARY

This weekend, we take a detour from the bread of life discourse in John’s gospel and celebrate the Assumption of the Blessed Virgin Mary—commemorating the end of Mary’s earthly life and assumption into Heaven. Considered one of the most important feast days of the year, it is always celebrated on August 15 and is a Holy Day of Obligation on the official Church calendar. Since the Feast of the Assumption also falls on Sunday this year, it is a “two for one” liturgical celebration!

While the event itself is not described in biblical terms, the history of this feast day has its roots in early Christianity. According to St. John of Damascus, the Roman emperor Marcian requested the body of Mary, Mother of God at the Council of Chalcedon, in 451. St. Juvenal, Bishop of Jerusalem at that time, told the emperor that “Mary died in the presence of all the Apostles, but that her tomb, when opened upon the request of St. Thomas, was found empty; wherefrom the Apostles concluded that the body was taken up to heaven.” By the 8th century, the Church renamed the feast day of the Memorial of Mary to the Assumption of Mary (called the “Dormition of Mary” in the Eastern Churches), although it was not until 1950 that Pope Pius XII officially defined the dogma of the Assumption in his Apostolic Constitution *Munificentissimus deus*. Today, it is marked as a major feast day and public holiday in many countries. In the U.S., one of the most famous celebrations takes place in Cleveland’s Little Italy neighborhood during an annual street fair featuring a religious procession, Italian foods, a carnival, and fireworks!

Since I am a big Mary fan (I have both a rosary and statue collection that would rival most Marian shrines), it is hard to resist the temptation to include every

Marian hymn in this weekend’s liturgy! In my judgement it is obligatory to include the hymn, “Immaculate Mary.” Dubbed the “Lourdes Hymn,” the earliest version of the hymn was written in 1873 by French priest Jean Gagniet, to honor the site of the apparitions of Our Lady of Lourdes. While the text has been revised to include reference to the Assumption, the refrain remains universal. I have witnessed crowds of thousands who enthusiastically belt out the chorus, “Ave, Ave, Ave, Maria!”

A more contemporary Marian favorite is also John Michael Talbot’s, “Holy is His Name.” It is a modern day version of the “Magnificat”—the prayer that Mary proclaims to Elizabeth when she is told she will be the Mother of God. Musically speaking, settings of the Magnificat abound in both traditional and contemporary settings. One of my favorites is by the Baroque composer J.S. Bach. Bach’s “Magnificat” is rooted in harmonic order, while at the same time conveys vivid imagery of the prayer through orchestral colors, operatic flourishes and descriptive word painting. It is a vocal “tour de force” and I consider it a masterpiece of musical design that captures the meaning of the “Magnificat” like no other. Bach himself thought of music as a *donum Dei* (gift of God) exclaiming, “When there is devotional music, God with his grace is always present.”

Beyond the Feast of the Assumption, we honor Mary as a model of discipleship, as she responds “yes” to her role as the mother of Jesus with humility and trust. Like Mary, may we also say “yes” to God’s plan for each of us—that we might follow Christ with abandon in our earthly lives so that we might live with him forever in the kingdom of heaven.

—Maria Manzo



## WEEKLY MASS TIMES

### Masses:

Tuesday–Friday ..... 8:00 am  
 Saturday Vigil ..... 5:00 pm  
 Sunday ..... 8:00 am & 10:00 am

### Notes:

- ▶ Pre-registration for in-person Mass attendance no longer required
- ▶ Livestream 10:00 am Sunday at [youtube.com/themadeleineparish](http://youtube.com/themadeleineparish)

**Penance** ... By appointment; call Parish Office

## PARISH OFFICE

**Hours** ..... Monday–Friday, 10:00 am–3:00 pm

**Phone:** 503-281-5777 ..... **Fax:** 503-281-0673

**School Office** ..... 503-288-9197

## PARISH STAFF

**Rev. Mike Biewend**—Pastor  
[fathermike@themadeleine.edu](mailto:fathermike@themadeleine.edu) ..... ext. 111

**Deacon Mike O’Mahoney**—Permanent Deacon  
[deaconmike@themadeleine.edu](mailto:deaconmike@themadeleine.edu)

**Carol Glasgow**—School Principal  
[cglasgow@themadeleine.edu](mailto:cglasgow@themadeleine.edu) .. 503-288-9197

**John Garrow**—Business Manager  
[jgarrow@themadeleine.edu](mailto:jgarrow@themadeleine.edu) ..... ext. 118

**Darlene Maurer**—Pastoral Assistant  
[dmaurer@themadeleine.edu](mailto:dmaurer@themadeleine.edu) ..... ext. 125

**Therese Fenzl**—Director of Spiritual Ministries  
[tfenzl@themadeleine.edu](mailto:tfenzl@themadeleine.edu) ..... ext. 116

**Maria Manzo**—Director of Music  
[mmanzo@themadeleine.edu](mailto:mmanzo@themadeleine.edu) ..... ext. 113

**Ann Hart**—Events Manager  
[ahart@themadeleine.edu](mailto:ahart@themadeleine.edu)

**Allison Blakemore**—Bookkeeper  
[ablakemore@themadeleine.edu](mailto:ablakemore@themadeleine.edu) ..... ext. 119

**Mary Prusso**—Registration/Special Events  
[mprusso@themadeleine.edu](mailto:mprusso@themadeleine.edu) ..... ext. 112

**Janeen Reilly**—Parish Administrator  
[jreilly@themadeleine.edu](mailto:jreilly@themadeleine.edu) ..... ext. 110

**Terry Silva**—Facilities Support  
[tsilva@themadeleine.edu](mailto:tsilva@themadeleine.edu) ..... ext. 117

**Rich Hammons**—Director of Communications  
[rhammons@themadeleine.edu](mailto:rhammons@themadeleine.edu) ..... ext. 129

## SACRAMENTS

**Marriages, Funerals, Anointing of the Sick**—Fr. Mike ..... ext. 111

**Infant Baptism**—Darlene Maurer ..... ext. 125

**First Reconciliation, First Eucharist**—Trisha Mumm ..... ext. 127

**RCIA**—Christi Bohmbach, [rcia@themadeleine.edu](mailto:rcia@themadeleine.edu)

**Confirmation**—Fr. Mike ..... ext. 111

## COUNCILS & CONTACTS

**Pastoral Council**—Ron Oliver ..... 503-281-9070

**Finance Council**—Jim Jones. .... 503-284-3301

**Buildings & Grounds**—Erin Couch .. 503-281-9575

**School Advisory**—Eric Robinson .... 971-227-3772

**Facility Requests**—[themadeleine.edu/facilities](http://themadeleine.edu/facilities)

**Maintenance Requests**—John Garrow  
[jgarrow@themadeleine.edu](mailto:jgarrow@themadeleine.edu) ..... ext. 118

**Bulletin submissions due 5:00 pm Tuesday**

Email to [bulletin@themadeleine.edu](mailto:bulletin@themadeleine.edu)

# RECYCLING PROGRAMS EXPANDED AT THE MADELEINE

Marked collection bins in the breezeway facing 23rd Ave.

The Madeleine's Laudato Si' Circle and Care for Creation Ministry have joined with USA-based recycler, Terracycle, to offer our parish, school, and community opportunities to responsibly recycle specific items (primarily plastics) not generally handled at curbside. Terracycle has added more manufacturers to its program, and in turn, we have expanded our recycling offerings. Here is a current listing of what we are collecting. Please keep this in mind:

- ▶ Do not include garbage or items not specifically mentioned in the descriptions.
- ▶ Empty containers of contents. No need to wash first; ensure packaging is dry.



## STYROFOAM AND POLYSTYRENE

We have identified a local recycler of Styrofoam and Polystyrene (anything marked #6 like block packaging, meat trays, and to-go containers).



## LATE JULY® SNACKS

All Late July® snack packaging as seen in these examples. Limited to Late July brand only.



## GILLETTE® AND VENUS RAZORS AND RAZOR BLADES

All brands of blades and razors (systems and disposable units, and replaceable-blade cartridge units), rigid plastic packaging, and flexible plastic bag packaging.



## BIC WRITING INSTRUMENTS AND PACKAGING

All brands of empty writing instruments, glue sticks, water-color dispensers, highlighters, paint sets, and flexible packaging.



## RB HEALTH & NUTRITION

All brands of vitamins, minerals, and supplements; cough, cold, flu, sore throat, and nasal care; infant formula and child nutrition; personal care and foot care (all associated packaging including blister packs, tubes, bottles, caps, lids, cans, boxes, spray bottles, and plastic). No prescription bottles.



## HAIR AND SKIN CARE/COSMETICS

All brands. Hair care packaging (bottles/caps of shampoo and conditioner, hair gel tubes/caps, hair spray triggers, hair paste caps). Skin care packaging (lip balm tubes/caps, soap dispensers/tubes, bottles/caps of body wash and lotion dispensers). Cosmetics packaging (lipstick cases, lip gloss tubes, mascara tubes, eye shadow cases, eye/lip liner pencils, foundation packaging, powder cases).



## SWIFFER REFILLS



Swiffer only brands of Sweeper™ Dry, Wet, and XL Refills, WetJet Refills™, and Duster™ Refills.

## FOOD STORAGE

All brands of well-used plastic and glass food storage containers.



## CIGARETTE BUTTS, SANTA FE NATURAL TOBACCO COMPANY

All brands of fully extinguished cigarettes (and ashes) and tobacco products, including filters, plastic packaging, inner foil packaging, rolling paper, and loose tobacco pouches.



## OFFSITE RECYCLING OPPORTUNITIES FOR FAMILIES

### REDYPER DISPOSABLE DIAPERS

Subscription service for purchasing and recycling Redyper brand disposable diapers through Terracycle

### LOOP

Offers zero-waste packaging of everyday essentials (beauty, health and personal care, grocery, and household essentials) from leading brands (including Haagen-Dazs!). Details at [www.loopstore.com](http://www.loopstore.com)

Details on all programs at [www.themadeleine.edu/terracycle](http://www.themadeleine.edu/terracycle)



# In Memoriam

## THE MADELEINE FAMILY REMEMBERS

### BRUCE DUFOUR

A funeral Mass will be held for Madeleine parishioner Bruce Dufour on Thursday, August 19, 11:00 am at The Madeleine. In addition to in-person attendance, the service will be livestreamed on the parish YouTube channel at [www.youtube.com/themadeleineparish](http://www.youtube.com/themadeleineparish)

Bruce Anthony Dufour was born on June 1, 1946 in Blackfoot, Idaho, a typical Army brat with a passport to rival most by the age of sixteen. Early accomplishments as an unrelenting big brother and committed prankster culminated into a very proud Eagle Scout. Higher education followed at Louisiana Tech where he immediately joined Kappa Sigma fraternity and thankfully met the love of his life, Angelann.

He was so proud of his 52 years of marriage and the successful raising of two well adjusted children. He was never without a dog by his side who eagerly awaited the "accidental" fumbling of a potato chip. A natural in sales and marketing led to a successful career in the automotive, trucking and metal fabrication industries.

Collecting life long friendships along the way, his effortless

enthusiasm and positivity created a gravitational pull for bringing people together. Bruce loved a good debate, always leaned toward generosity and humor, and in the face of an uncompromising disease for over a decade never complained once.

He was a devout Catholic who challenged himself to evolve and better understand all of God's people.

His memory will be celebrated daily by his family and friends.



*Please pray for Bruce, his family, and all the faithfully departed from The Madeleine*

## FAITH FORMATION

### INTERESTED IN BECOMING CATHOLIC?

This fall we are offering a series of opportunities to explore Catholicism. These guided discussions are intended for those who are curious about the Catholic faith and/or for those thinking about becoming Catholic. We will be looking at the treasures and gifts of our Catholic faith through prayer, discussion, and response to questions. Some of the

topics we will explore are the person and teaching of Jesus, the Mass, how Catholics read the Bible, Catholic Social Teaching, Mary, and the Saints.

Time and Place: Sunday, September 19, 26 and October 10, 17, and 24 at 9 am in the St. Catherine Room (follow the signs to the Old Church). While there is no obligation beyond these September/

October discussions, this serves as a foundation for those wishing to continue the process toward becoming Catholic. Bring an open heart and your questions.

Contact Christi Bohmbach at [rcia@themadeleine.edu](mailto:rcia@themadeleine.edu) to learn more, or register at [www.themadeleine.edu/faithformation](http://www.themadeleine.edu/faithformation) (scroll to the bottom of the page for RCIA).

### SACRAMENTAL PREPARATION REGISTRATION IS OPEN

Registration for First Penance and First Eucharist is open for the 2021-22 school year. Our fun and informative class series is based on concepts from the Catechesis

of the Good Shepherd program. Classes will begin at 10 am on Sundays and once class is complete, children will be brought to Mass to join their families in time for

the Presentation of Gifts.

For more information, to receive our schedule or to register, contact Trisha Mumm at [sac-prep@themadeleine.edu](mailto:sac-prep@themadeleine.edu).

### CONFIRMATION REGISTRATION IS OPEN

**Register before September 12 • Meet & Greet on August 24**

All Catholic youth registered at The Madeleine Parish or attending Central Catholic High School who wish to be confirmed in 2022 are invited to our informal Meet and Greet in the Courtyard on Tuesday August 24, 2021 at 6 pm.

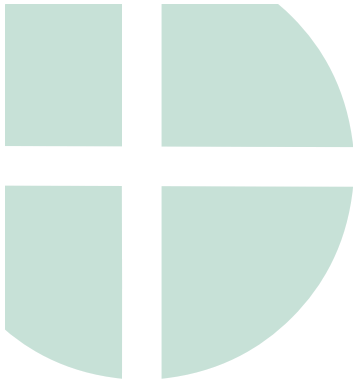
Catechists Therese Fenzl, Stephanie Fernandes, Trieu Nguyen and Father Mike will be happy to present the upcoming sacrament preparation program and answer questions. Parents and families are welcome!

Registration forms information at [www.themadeleine.edu/faithformation](http://www.themadeleine.edu/faithformation)

Please send any questions to [confirmation@themadeleine.edu](mailto:confirmation@themadeleine.edu)

This year's deadline to register is September 12, 2021.

**Ministries and friends: Feel free to send your news and updates to [bulletin@themadeleine.edu](mailto:bulletin@themadeleine.edu) Please send by Tuesday, 5:00 pm for the following week's bulletin.**



AUGUST 15, 2021

## THEMES FROM CATHOLIC SOCIAL TEACHING

The Church's social teaching is a rich treasure of wisdom about building a just society and living lives of holiness amidst the challenges of modern society. Modern Catholic social teaching has been articulated through a tradition of papal, conciliar, and episcopal documents. The depth and richness of this tradition can be understood best through a direct reading of these documents. In these brief reflections, we highlight several of the key themes that are at the heart of our Catholic social tradition.



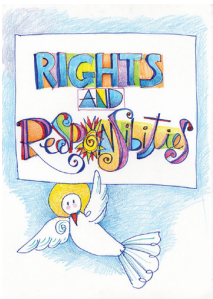
### LIFE AND DIGNITY OF THE HUMAN PERSON

The Catholic Church proclaims that human life is sacred and that the dignity of the human person is the foundation of a moral vision for society. This belief is the foundation of all the principles of our social teaching. In our society, human life is under direct attack from abortion and euthanasia. Human life is threatened by cloning, embryonic stem cell research, and the use of the death penalty. The intentional targeting of civilians in war or terrorist attacks is always wrong. Catholic teaching calls on us to work to avoid war. Nations must protect the right to life by finding effective ways to prevent conflicts and resolve them by peaceful means. We believe that every person is precious, that people are more important than things, and that the measure of every institution is whether it threatens or enhances the life and dignity of the human person.



### CALL TO FAMILY, COMMUNITY, AND PARTICIPATION

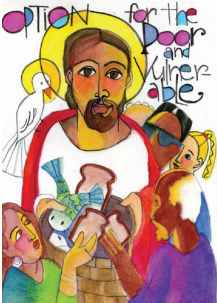
The person is not only sacred but also social. How we organize our society—in economics and politics, in law and policy—directly affects human dignity and the capacity of individuals to grow in community. Marriage and family are the central social institutions that must be supported and strengthened, not undermined. We believe people have a right and a duty to participate in society, seeking together the common good and well-being of all, especially the poor and vulnerable.



### RIGHTS AND RESPONSIBILITIES

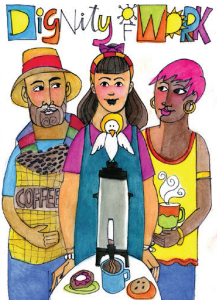
The Catholic tradition teaches that human dignity can be protected and a healthy community can be achieved only if human rights are protected and responsibilities are met. Therefore, every person has a fundamental right to life and a right to those things required for human decency. Corresponding to these rights are duties and responsibilities—to one another, to our families, and to the larger society.





**OPTION FOR THE POOR AND VULNERABLE**

A basic moral test is how our most vulnerable members are faring. In a society marred by deepening divisions between rich and poor, our tradition recalls the story of the Last Judgment (Mt 25:31-46) and instructs us to put the needs of the poor and vulnerable first.



**THE DIGNITY OF WORK AND THE RIGHTS OF WORKERS**

The economy must serve people, not the other way around. Work is more than a way to make a living; it is a form of continuing participation in God's creation. If the dignity of work is to be protected, then the basic rights of workers must be respected—the right to productive work, to decent and fair wages, to the organization and joining of unions, to private property, and to economic initiative.



**SOLIDARITY**

We are one human family whatever our national, racial, ethnic, economic, and ideological differences. We are our brothers' and sisters' keepers, wherever they may be. Loving our neighbor has global dimensions in a shrinking world. At the core of the virtue of solidarity is the pursuit of justice and peace. Blessed Pope Paul VI taught that "if you want peace, work for justice." The Gospel calls us to be peacemakers. Our love for all our sisters and brothers demands that we promote peace in a world surrounded by violence and conflict.



**CARE FOR GOD'S CREATION**

We show our respect for the Creator by our stewardship of creation. Care for the earth is not just an Earth Day slogan, it is a requirement of our faith. We are called to protect people and the planet, living our faith in relationship with all of God's creation. This environmental challenge has fundamental moral and ethical dimensions that cannot be ignored.







**Timmco**  
INSURANCE

Brian Timm  
Susan Ames | Derek Ames


1615 NE Broadway | 503-288-8818  
www.timmco.com

AUTO | HOME | BUSINESS | LIFE



**Sweetly Aimee, LLC**  
Custom Wedding and All-Occasion Cakes and Desserts

Aimee Holzschuh  
Parishioner & Parent  
503.998.7368  
www.SweetlyAimee.com



**TIM WALTERS**  
Principal Broker

The most trusted name in Real Estate!

Committed to the NE Portland Neighborhoods

28+ years of experience



503-545-1880 | TimWaltersRealtor@Gmail.com | TimWaltersPc.com



**CITY HOME IMPROVEMENT, Inc.**

Kitchens | Bathrooms | Additions  
*Since 1956*

Please visit our showroom or call for a free in-home estimate

**503-253-7591**

www.cityhomeimprovementinc.com  
8811 NE Sandy Blvd. Portland, OR 97220



**SOCCER CAMP**  
*Bernie Fagan*  
EST. 1983

**Mark McGinnis**

Parishioner, Parent  
Mortgage Advisor

NMLS 98586  
971-300-0484  
mark.mcginis@spmc.com  
"It's about service!"






**ROLOFF**  
Construction

**JOHN M. WYNN**  
ATTORNEY AT LAW  
**McGill, Kapranos & Wynn**  
Parishioner




Hollywood Professional Center, 3939 NE Hancock St., Ste. 305  
jmwpxd@qwestoffice.net • 503-287-7333

**PAUL MARRS**



MORTGAGE BANKER  
503 781 2114  
PREMIER MORTGAGE RESOURCES  
CO.NMLS 1169 MLO-5212

**LANCE MARRS**



PRINCIPAL BROKER  
503 701 5323  
PORTLAND MODERN REAL ESTATE  
LICENSED IN OREGON

**JOSÉ MESA AUTO WHOLESALE, LLC**  
"The mobile auto dealer who is always in your neighborhood."  
**YOUR DISCOUNT AUTO RETAILER SINCE 1992!**  
sales@josemesa.com 503-789-0438 www.josemesa.com  
NEW•USED•BUY•SELL•LEASE•TRADE•CONSIGN•BROKER•APPRAISE



**Dr. Phil Doleac, PC**  
Orthodontics for all ages  
www.magic-smiles.com

Beaverton 503.644.7009 Portland 503.255.1694 Scappoose 503.543.4488

**A CRAFTSMAN'S TOUCH, LLC**  
QUALITY WOOD FLOORS  
INSTALLATION - REFINISHING  
27+ YRS EXPERIENCE CCB #172097  
**NICK STEVENSON 503-380-8962**  
Family Parishioners



**THEORY**  
MORTGAGE

Beating Banks Daily

Brian DuVal  
503-850-7667

NMLS 5912, NMLS 1848246

**ADVERTISE YOUR BUSINESS HERE!**  
Contact Rich Hammons,  
bulletin@themadeleine.edu

**ANNE C. STEINER**  
ESTATE PLANNING  
ELDER LAW ATTORNEY

503.946.8361 • 1717 NE 42nd Ave., Suite 2104  
PARISHIONER - [anne.c.steiner@gmail.com](mailto:anne.c.steiner@gmail.com)  
WILLS - TRUSTS - PROBATE  
GUARDIANSHIP - CONSERVATORSHIP



*Beaumont Vision:*  
providing full-service eyecare for all ages, including comprehensive exams, glasses and contacts

Dr. John R. Lewis  
Stop by to view our unique eyewear  
Most insurances accepted

**4331 NE Fremont St**  
**Ph: 503-331-3937**


**JOHN W. LOBO PAINTING**  
Custom Interior & Exterior  
Creative Finishes  
503-969-3337 CCB#89027  
Licensed Bonded Insured

**ADVERTISE YOUR BUSINESS HERE!**  
Contact Rich Hammons,  
bulletin@themadeleine.edu



**PAUL MYERS, Ph.D.,LLC**  
PSYCHOTHERAPY, COUNSELING & CONSULTING SERVICES

(503) 381-6685 paulmyersphdpdx@gmail.com  
www.paulmyersphdpdx.com



**Ashley**  
REALTY WORKS TEAM

PARISHIONERS, NEIGHBORS, EXPERT REALTORS

Wick & Karoline Ashley  
karoline@ashleyrealtyworks.com  
(503) 819-4851  
237 NE Broadway Suite 100

**RE/MAX**  
equity group

**ADVERTISE YOUR BUSINESS HERE!**

Contact Rich Hammons,  
bulletin@themadeleine.edu



**WILLAMETTE**  
FINANCIAL ADVISORS, LLC  
PERSONALIZED ADVICE FROM TRUSTED ADVISORS

**James M Jones**  
Financial Advisor, CFP®  
Parishioner  
Direct 503.284.9200  
Office 503.7470306  
jimj@wfinadv.com




**Retrouvaille**  
A Christian Peer Ministry  
A LIFELINE FOR HURTING MARRIAGES

Is your marriage tearing you and your family apart?  
Weekends held every February, June & October at Mt. Angel Retreat Home  
**www.helpourmarriage.com**  
**503-704-7382**  
Donated by Kevin & Carol McMenamin

**Nathalie Pillsbury**  
Parishioner  
office | 503.245.0685  
www.rolloffconstruction.com

**ADVERTISE YOUR BUSINESS HERE!**  
Contact Rich Hammons, bulletin@themadeleine.edu