

Masks required at all Masses and in-person events at The Madeleine until further notice. Thank you.

CHURCH CARPET IS GONE... BEAUTIFUL STONE FLOOR RETURNS!

As promised, this week crews removed the dingy, dated old carpet in the church and revealed the historic, original, beautiful marble in the Sanctuary and the terrazzo under the pews and in the vestibule.

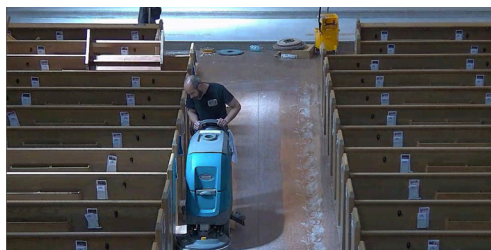
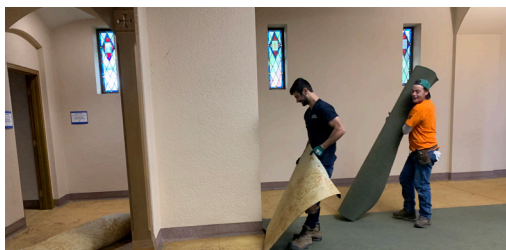
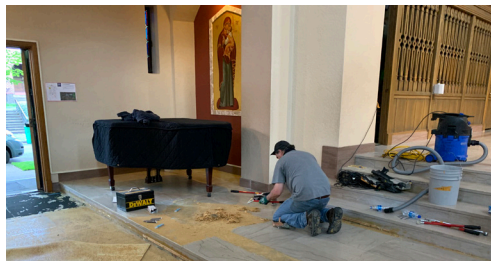
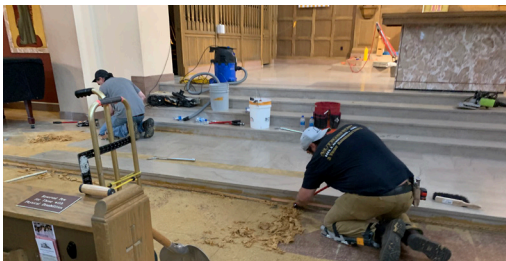
As you can see in the photos below, it was not a minor undertaking! Workers had to pull up the glued-down carpet, then hand-scrape all the glue off the stone floors.

Once all glue residue was removed, crews used a machine to buff and polish the stone to a beautiful luster...what it must have looked like 66 years ago when this church

was originally built!

There are a few areas that will require repair. The original Altar Rail—removed after Vatican II—left a footprint that is currently filled with cement, as are areas where other fixtures had been built in, then removed during the mid-1980s refresh. These were expected...so we have enlisted the services of a stone-flooring repair specialist.

We are so excited to have this opportunity to restore some of the original elegant features from our beautiful church.



FATHER & CHILD PHOTOS FOR JUNE

Upload photos to www.themadeleine.edu/fathers

We are gathering photos for our annual Father & Child video to run at Masses in June, beginning June 13.

We are starting over—all new photos!

This year, we're making a fresh start. So even if you've sent us a photo before, please send a new one this year. Upload your best



father and child(ren) photos to www.themadeleine.edu/fathers

Please, only one photo of a specific father/child grouping, and please upload only your own photos, not those of friends and classmates.

We need your photos no later than Tuesday, June 10. Help us honor all the fathers in our community in this very special way.

Pentecost

TODAY WE CELEBRATE the birth of the Church through the Holy Spirit, and the completion of the Paschal Mystery. The images of fire, wind, and breath, are meant to evoke a collective “fire in the belly” that motivates us to do what we are called to do. How do you perceive the Spirit working now within your life and the life of our community of faith?

PRAY FOR OUR FAITHFULLY DEPARTED

Russ Clark
John DeBenedetti

Larry Mason
Barbel Durrett

PRAYER REQUESTS

For those who are ill, or in need of our prayers

Peggy Barnett
Matthew Eusterman
Lisa Nice
Penny Hanselman
Quenton Czuba
Gloria O'Brien


Pam Wiggin
Tom Johnston
Hilda Glasgow
Sylvia Manzo
Lori Taylor
Kathy Gaitan

WORSHIP & PRAYER

05/25, Tues. Carl Kleist †
05/26, Weds. Bill and Doris Lamb †
05/27, Thurs. John DeBenedetti †
05/28, Fri. Achim Nicklis †
05/29, Sat. John DeBenedetti †
05/30, Sun. 8:00 am . . . The Madeleine Community
10:00 am Barbel Durrett †

Calendar This Week

SUNDAY, MAY 23

8:00 am: Mass—Church
 **IN-PERSON ONLY**

10:00 am: Mass—Church
 **IN-PERSON**  **LIVESTREAM**

MONDAY, MAY 24

9:00 am: School Picture retakes

TUESDAY, MAY 25

8:00 am: Mass—Church

9:00 am: Adoration—Church

WEDNESDAY, MAY 26

8:00 am: Mass—Church

9:00 am: Jogathon Bingo—School Field

3:00 pm: Music Enrichment (Virtual)

7:00 pm: Choir Rehearsal—Zoom & In-person

THURSDAY, MAY 27


2:00 pm: Mass—Church
 **IN-PERSON**  **LIVESTREAM**

FRIDAY, MAY 28


▶ School Early Dismissal—School 11:30 am—
Teacher Meeting

8:00 am: Mass—Church

SATURDAY, MAY 29


5:00 pm: Mass—Church
 **IN-PERSON ONLY**


SUNDAY, MAY 30

8:00 am: Mass—Church
 **IN-PERSON ONLY**

10:00 am: Mass—Church
 **IN-PERSON**  **LIVESTREAM**

ACCESSING THE MADELEINE IN TIME OF COVID-19

▶  **IN-PERSON**—Pre-registration is no longer required; max attendance 150 people, COVID safety procedures in place.

▶  **LIVESTREAM**—on our YouTube channel every Sunday at 10:00 am, School Masses, and special events:

www.youtube.com/themadeleineparish

▶ **Parish Emails:** To sign up, visit www.themadeleine.edu/email

PARISH LIFE

SLEEP IN HEAVENLY PEACE— BUILD BEDS FOR KIDS

Help build beds for kids who need them • March 14, 10:00 am–2:00 pm

The most profound way to end the national crisis of child bedlessness is to unite the country in one common goal of building the most amount of beds possible and getting thousands of children off the floor. And that is the story behind SHP's National Build Day.

SHP-OR, Portland Metro invites you to join us for Bunks Across America on Saturday, June 12, at the Portland Shed. SHP's goal is to build over 7,500 beds with up to 15,000 volunteers, and we need your help to make it happen. So save the date and join us for a memorable day of joy and community service.

Sleep In Heavenly Peace is a group of volunteers dedicated to building, assembling and delivering top-notch bunk beds to children of families in need. Our builds are held at Portland Shed. Portland Shed is a non-profit volunteer organization providing resources to several charities for various construction projects including sleeping pods, tiny homes, furniture and handicap ramps.

Portland Shed provides a place where volunteers can gather and spend a few hours working on various projects.

Bedding drive & materials donations

We will also be hosting a bedding drive. Feel free to bring donations of new twin sheet sets (not extra long), pillows, and



blankets or comforters. All donated bedding must be new and still in the original packaging. If you are interested in donating lumber, hardware or tools contact gregg.miller@shpbeds.org.

Lunch and water bottles are provided as are gloves and all protective gear. We look forward to seeing you!

When & Where:

▶ Saturday June 12 •

10:00 AM - 2:00 PM

▶ The Portland Shed, 10609 NE Simpson St., Portland

Volunteering Requirements

- ▶ **COVID-19 Protocol:** We'll be adhering to state and local mandates and will be implementing social distancing, masks, and other PPE to protect you and your loved ones while you serve your community.
- ▶ Each volunteer is required to fill out an Indemnification Release Form.
- ▶ No child under the age of 12 is allowed to participate in a Build Day.
- ▶ Over-age minors are required to be accompanied by a legal guardian.

To Volunteer:

▶ Visit www.shpbeds.org/chapter/or-portland-metro and click "Register"

To Donate:

- ▶ Online—weblink.donorperfect.com/or-portlandmetro
- ▶ Portland Shed—portlandshed.org
- ▶ Sleep In Heavenly Peace—SHPBeds.org

SEND US YOUR 2021 HIGH SCHOOL GRADS!

www.themadeleine.edu/graduates • Submit by June 2, please.

We want to recognize all Class of 2021 high school graduates from The Madeleine in our bulletin this June. Whether she or he went to our parish school or not...we want to



recognize each and every one!

Visit www.themadeleine.edu/graduates If your grad's school is not listed in the menu, enter it in the "other" field.

We need to receive your Graduate's name by June 2 so we can list her or him in our June 6 bulletin. Thank you.



Today as we celebrate Pentecost the Holy Spirit wants to make us advocates of God's presence to bring new life to others, especially those who do not know the love of God in their lives. This month, through your gifts, the Society of St. Vincent DePaul has able to bring the love of God to the poor. Thank you..

— Mary Clare O'Brien, 503-309-7639

JOIN OUR NEW CHIME CHOIR

Do you love music? Consider joining our new “Chime Choir” at The Madeleine.

Hand chimes are...

- ▶ Accessible to play. Chimes are set up like a musical keyboard. A basic knowledge in musical rhythm or note reading is helpful, but not required.
- ▶ A safe alternative to singing during COVID. “Chimers” are assigned one or two individual chimes, which are not

shared with one another. Because of this, it is easy to be socially distanced. Masks are mandatory.

- ▶ A great family music ministry – which will bring much joy and beauty to our liturgies!

For more information on rehearsals and liturgies, please contact Maria Manzo, Director of Music at mmanzo@themadeleine.edu

PENTECOST—MORE THAN JUST WEARING RED

The Feast of Pentecost is much more than just wearing red to Mass (although I must admit, red is my favorite color)! It is, in fact, the official send off by Jesus to the disciples when he came to them in the upper room—sending the Holy Spirit to be with them as they go out in the world to continue the mission of Jesus Christ.

Liturgically speaking, the Holy Spirit sometimes bears the short end of the stick—compared to the time that is spent on God the Father and God the Son. However, the Feast of Pentecost is one of the most important feast days of the year. From an historical perspective, Pentecost always occurs 50 days after the death and resurrection of Jesus, and ten days after his ascension into heaven. The name itself is derived from the Greek word *pentecoste*, which means fiftieth. Sometimes called the Feast of Harvest or the Feast of Weeks, Pentecost has its roots in the Jewish holiday, *Shavu'ot*, which falls 50 days after Passover. In our Catholic tradition, it was right after Pentecost that Peter, inspired by the Holy Spirit, preached his first homily to Jews and other non-believers and converted thousands to Christianity. For this reason, Pentecost is considered the birthday of the Church.

The Feast of Pentecost has two unique liturgical aspects. These include an optional extended Pentecost Vigil and the singing of the Sequence on Pentecost day. Although the Vigil of Pentecost is not especially well known, it is reminiscent of a mini-Easter Vigil. There are four Old Testament readings, each

followed by a Psalm or silence. Similar to the Easter Vigil, the Gloria and Collect are delayed until after the last of these readings, right before the epistle. These

readings help to bring to life the role of the Holy Spirit in the life of the Church. The second unique aspect is the singing of the Pentecost sequence—one of only two that are still mandatory in today’s liturgy (the other is the Victimae Paschali, which is sung on Easter Sunday). Although

the sequence originally evolved as an extended melisma of the Alleluia (a practicality which allowed time for the deacon to arrive at the ambo for the Gospel reading), in modern liturgies it is placed before the Gospel Acclamation.

One of my favorite Pentecost songs is called, “Fishermen of Men,” which is composed by my husband, Michael Kissinger. In the rollicking gospel style of a “tent meeting revival,” the song uses a different melody and lyric for each voice. The men begin with the melody on the words, “We are all his Fishermen of men! When the Holy Spirit came, and he filled us with his flame; we became his Fishermen of men!” Each successive voice is layered over the top of the last until all parts are singing their own melody and words all at the same time. It is controlled chaos—a kind of “singing in tongues.” At the end, all voices come together in unison on the original melody. Just like the disciples at Pentecost, they are united by the Holy Spirit and became his Fishermen of men!

—Maria Manzo



WEEKLY MASS TIMES

Masses:

Tuesday	8:00 am
Wednesday	8:00 am
Thursday (School Mass)	2:00 pm
Friday	8:00 am
Saturday Vigil	5:00 pm
Sunday	8:00 am & 10:00 am

Notes:

- ▶ Pre-registration for in-person Mass attendance no longer required
- ▶ Livestream 10:00 am Sunday and 2:00 pm Thursday at [youtube.com/themadeleineparish](https://www.youtube.com/themadeleineparish)

Penance . . . By appointment; call Parish Office

PARISH OFFICE

Hours Monday–Friday, 10:00 am–3:00 pm

Phone: 503-281-5777 **Fax:** 503-281-0673

School Office 503-288-9197

PARISH STAFF

Rev. Mike Biewend—Pastor
fathermike@themadeleine.edu ext. 111

Deacon Mike O’Mahoney—Permanent Deacon
deaconmike@themadeleine.edu

Carol Glasgow—School Principal
cglasgow@themadeleine.edu . . . 503-288-9197

James Wurzer—Business Manager
jwurzer@themadeleine.edu ext. 118

Darlene Maurer—Pastoral Assistant
dmaurer@themadeleine.edu ext. 125

Therese Fenzl—Director of Spiritual Ministries
tfenzl@themadeleine.edu ext. 116

Maria Manzo—Director of Music
mmanzo@themadeleine.edu ext. 113

Ann Hart—Events Manager
ahart@themadeleine.edu

Nadia Stickney—Bookkeeper
nstickney@themadeleine.edu ext. 119

Mary Prusso—Registration/Special Events
mprusso@themadeleine.edu ext. 112

Janeen Reilly—Parish Administrator
jreilly@themadeleine.edu ext. 110

Terry Silva—Facilities Support
tsilva@themadeleine.edu ext. 117

Rich Hammons—Director of Communications
rhammons@themadeleine.edu ext. 129

SACRAMENTS

Marriages, Funerals, Anointing of the Sick—Fr. Mike ext. 111

Infant Baptism—Darlene Maurer ext. 125

First Reconciliation, First Eucharist—Trisha Mumm ext. 127

RCIA—Christi Bohmbach, rcia@themadeleine.edu

Confirmation—Fr. Mike ext. 111

COUNCILS & CONTACTS

Pastoral Council—Ron Oliver 503-281-9070

Finance Council—Jim Jones 503-284-3301

Buildings & Grounds—Erin Couch . . . 503-281-9575

School Advisory—Catherine Glavan, 503-875-4679

Facility Requests—[themadeleine.edu/facilities](https://www.themadeleine.edu/facilities)

Maintenance Requests—James Wurzer
jwurzer@themadeleine.edu ext. 118

Bulletin submissions due 5:00 pm Tuesday
Email to bulletin@themadeleine.edu

MADELEINE PROVISIONS IS BACK!

Sales live Friday, May 28

Just in time for Summer BBQ season, we're back with another gourmet pop-up for the Madeleine community. A joint fundraiser for our parish and our school we will be offering the same Wagyu Beef, Kurobuta Pork, Gourmet Sausages, Sushi grade Tuna, and New Zealand Ora-King Salmon. Just like before, everything is at wholesale prices, far below what you could pay locally.

It's all being done at cost plus a small donation going back to the school and parish. This time, we're adding a WINE option so you can order some gorgeous bottles from local winery, Helioterra, that will be available at pickup. Lastly, we'll be grilling gourmet hot dogs that day, so bring your appetite!

Important Dates:

- ▶ We will go live with a secure link on Friday, May 28
- ▶ Orders are due no later Tuesday, June 8 @ noon
- ▶ Pickup will be Friday, June 11 from 3 pm to 5 pm at the school

Questions? Email or text Darryl Fowler (dcfowler@mac.com / 323-854-3333) about the products or anything else in the meantime.

HELP BEAUTIFY OUR CITY ...ONE BLOCK AT A TIME

Now open to the entire state of Oregon

Adopt One Block is a local nonprofit encouraging residents to adopt and care for our environment one block at a time. Participants choose a location and commit to weekly walking the public portion of the block, picking up litter and debris, and properly recycling or disposing of the trash. Anyone, any age, can participate (when and how you do this is your choice). Here's how to become a Block Ambassador:

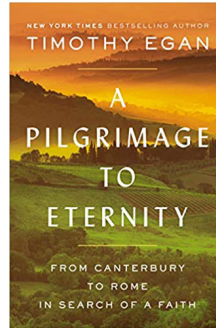
- ▶ Select a block anywhere state you would like to adopt.
- ▶ Submit the block to the organizer at www.adoptoneblock.org
- ▶ Request collection supplies you may need trash grabber, gloves, trash bag.
- ▶ Begin weekly walks of your adopted block.
- ▶ **Let us know what block you have adopted**, and share your stories and photos with us at bulletin@themadeleine.edu with subject line "Adopt One Block."

Questions: Darlene Maurer, dmaurer@themadeleine.edu

BOOK CLUB NEWS

Are you a bookworm?

Would you enjoy opportunities to meet with other parishioners and friends to share your thoughts about the contents of some very excellent books? If so, we invite you to join us at future discussion sessions. The book Fr. Mike has selected for June is *A Pilgrimage to Eternity*, by Timothy Egan. For details and/or to be added to our email list, please contact our MBC Ministry Coordinator: Gretchen Stevenson, gypsyfrau47@yahoo.com or 503-312-6834.

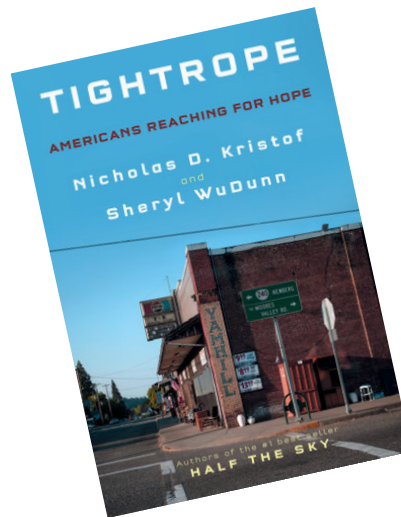


TAKE ACTION PROJECT—GIRL SCOUTS

Dog Toys • Ends June 7

Girl Scout Troop #10164 is collecting dog toys for their Take Action Project, which is a project Brownie troops complete to meet a need or solve a problem in their community. The toys are for Dove Lewis' Super Heroes, dogs who donate blood used in surgeries for injured dogs. Every Super Hero dog is given a toy each time they donate blood as a reward.

A bin will be available at the church to collect new, sturdy toys for dogs over 50 lbs. until June 7. Please consider donating to help our 2nd grade Brownie troop complete their project and thank these incredible dogs who are blood donors!



**A VIRTUAL SPECIAL EVENT!
Register Now!**

**An Evening with
NY Times Columnist
Nicholas D. Kristof**

JUNE 7th, 7:00 pm

**A Discussion on the book
*Tightrope: Americans
Reaching for Hope***

Join us for a transformative opportunity as we listen and probe deeply with Kristof into issues on poverty, our local, state and national priorities, understanding better the fraying of our social fabric, deaths of despair and stories of heartbreak and hope.

**As people of faith, what are we called to do?
What are our moral imperatives?**

PLEASE REGISTER BY JUNE 3RD BY CLICKING OR COPYING THE FOLLOWING ZOOM LINK INTO YOUR BROWSER. (Your computer, tablet or smartphone will need a Zoom application which can be obtained through Google.)

<https://tinyurl.com/kez9fkac>

After registering, you will receive a confirmation email containing information about joining the meeting. If you need help before or on June 7th, contact Dave Albertine at 503-282-7848.



Interfaith
Alliance on
Poverty

PARISH STEWARDSHIP COMMITMENT LETTERS ARE IN THE MAIL

Our Parish Stewardship Letters for the 2021-22 fiscal year are in the mail. If you have not yet received your letter, you will receive it soon.

Since we did not run a Stewardship Campaign last year due to the pandemic, we thought a review of what you might expect would be a good idea.

The feature most folks are drawn to

is the graph in the middle of the page that shows your past 5-years' giving in comparison to parish averages.

This letter, and the graph, show giving for our Parish Offertory, Second Collections and our Capital Repair Fund (used for maintenance and repairs on campus).

This graph does NOT include Old Church Capital Campaign gifts.

Once you have received your letter, if you have questions about the Stewardship Campaign, your past donations, or your upcoming donation, contact James Wurzer at the Parish Office, 503-281-5777 or jwurzer@themadeleine.edu, or Father Mike at fathermike@themadeleine.edu

By The Numbers

1 Giving History. We heard from some people that they didn't always remember how much they had been giving—so when it came time to pledge for the new year, they would have to dig through bank records. These green bars show how much you've given each year, averaged by month for simplicity—in Parish Offertory, Second Collections and Capital Repair gifts—for each of the past 5 years. **These bars do NOT include Old Church Capital Campaign giving or pledges.**

2 Parishioner Average Giving. We also thought it would be helpful to know, for context, the average monthly contribution per contributing parish family over each of the past 5 years.

3 Contact information. We have included what we hope is your current contact information. See an error or a phone or email missing? Just make the correction when you send in your commitment card!

4 Suggested 2021-22 monthly amount. This is an amount for you to consider for your 2021-22 giving. It reflects the greater of your prior year monthly average plus our requested 6% increase, or the parish average. It's just a suggestion...we are grateful for any amount.

5 Your Commitment. Here, we list the commitments for the coming year.

▶ **Combined Monthly Commitment.** The amount here is intended to cover not only your Parish Offertory, the main fund that our parish runs on, but Second Collections and Capital Repair Fund also. **This does NOT include any gifts to our Old Church Project Capital Campaign.**

▶ **Additional Gifts:** If you did not include Capital Repair Fund and Second Collections in the past, please consider including a monthly amount here.

▶ **Total Per Month:** If you included Additional Amounts, please total all the lines above for your total monthly commitment.

6 Method of payment: We are really hoping people will experience the convenience of automatic electronic payments this year. Complete instructions are on the back of your commitment card.



Dear John & Jane,

Thank you for your support of The Madeleine! Every family, every person in the parish benefits from your generosity. Your ongoing support is critical to the ministries and mission of The Madeleine.

As you know, the pandemic has been difficult to navigate. Most of our supporters have been steadfast, but not everyone has been able to support the parish at their previous levels. And, due to the physical, emotional and economic hardships imposed by the pandemic, we did not pursue a Parish Stewardship Campaign last year. Which leads me to ask for your help this year.

With increased costs for 2021—including a planned cost-of-living pay increase for your parish staff who received none last year—I am asking all parishioners to consider a 6% or greater increase over their prior giving amounts. Or, if possible, to increase giving up to our parish average amount, as noted on the Stewardship Commitment Form below. I know I can count on your generosity, and I remain very grateful for your support of our journey.

If you have any questions, please contact me or James Wurzer, our Business Manager, at the Parish Office, 503-281-5777.

Fr. Mike

Fr. Mike Biewend, Pastor



“As our recent Mass attendance shows, people are eager to again congregate in person...to celebrate Mass as a community. It's been joyous to see families at church again!”

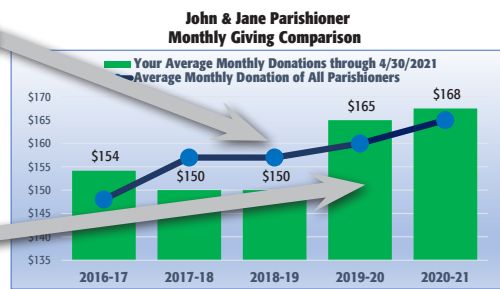


“Our Care for Creation ministry held their annual Earth Day E-Waste Recycling event, which brought people from the parish and neighborhood to responsibly discard their old electronics.”

2

1

3



Your combined monthly giving by fiscal year for Offertory, Second Collections and Capital Repair

2021-2022 PARISH STEWARDSHIP COMMITMENT

- Please make any corrections below
- For electronic donations, please complete the information on back
- When completed, please return this form in the envelope provided or drop in our weekly collection basket

Email: j&j-parishioner@mail.com
Phone: (503) 123-4567

John & Jane Parishioner
1234 NE Neighborhood St
Portland

Please consider increasing your total combined monthly commitment to our Parish average of: **\$175**

YOUR COMMITMENT	
Please enter your combined monthly commitment, to include Offertory, Capital Repair and Second Collections	\$
OPTIONAL, ADDITIONAL GIFTS:	
Additional Capital Repair Fund—Monthly	\$
Additional Second Collections—Monthly	\$
Total per month (Add together all 3 lines above)	\$

METHOD OF PAYMENT	
<input type="checkbox"/> Auto Debit (EFT)—Preferred	<input type="checkbox"/> Online Bill Pay
<input type="checkbox"/> Debit/Credit Card—Preferred	<input type="checkbox"/> Envelopes

4

5

6

PENTECOST

A CONSPIRACY OF LOVE

Our lives are a conspiracy of love. *Con-spiracy* means “breathing together.” From the moment that the “Breath of God” first gives life to our body (Gen 2:7), we start a lifetime of breathing together with God. Pentecost celebrates God’s new life transforming us—a change that demands leaving behind old ways and adopting God’s ways—a new vision of the world, new values and new behaviors.

The outward signs of the first Pentecost experience—wind and fire (Acts 2:2-4)—are tokens of transformation. The wind blows where it wills, always fluctuating and changing independently of our control. Fire never leaves anything it touches the same. Like God’s transforming power, wind and fire are safe in small doses, but dangerous, uncontrolled, and even devastating when experienced at full power.

God’s Holy Breath: Mystery and Mission

The reality of the Holy Spirit, the divine power of life and the bond of love, is a theological mystery. That is, although we affirm *that* the Father and the Son share the same Holy Spirit or “Breath” of divine life that draws

them together into a communion of love, we cannot explain how this happens.

The Holy Spirit is our way of experiencing how God dwells deep within us to empower us for living and to draw us together into a community through the power of love. Breath is the sign of life—we can’t do without it—and vigorous breathing is a sign of vital power at work. When we detect the Holy Spirit, we know that God is somehow present and working.

God’s Holy Breath always accompanies God’s Word. Just as we cannot speak words without using breath, so likewise when God sends the Word, God also sends the Holy Spirit (*Catechism of the Catholic Church*, #689). God’s Holy Spirit empowers us to hear and understand God’s Word, then to act on it in our lives.

Filled with the Holy Spirit at Pentecost, the disciples responded by their public witness to the Christian message and their community life of worship and solidarity. From that time onward, the Christian community has continued to proclaim the meaning of Jesus’ saving work and to invite all humanity to believe and to share in the life of God.



THE SPIRIT AT WORK IN US

The disciples' transformation was based on their astounding experience of first meeting the risen Christ and then being empowered by God's Holy Spirit. Through baptism, the Holy Spirit also now dwells in us and transforms us from within into living images of God and Christ (Gen 1:26-27; 2 Cor 3:18). We are reminded of this transforming power when we imagine the Holy Spirit as fire. "As fire transforms into itself everything it touches, so the Holy Spirit transforms into the divine life whatever is subjected to his power" (*Catechism of the Catholic Church*, #1127). So whenever the fire of the Holy Spirit touches us, we cannot but be changed.

But unlike regular fire which usually destroys things, God's transforming fire changes us into something better. We become images of Christ by taking on the mind of Christ, his attitudes, his values and his behaviors to continue his mission of building God's covenant community of justice, love and peace on earth.

The Holy Spirit is always at work empowering us for new life in Christ and bonding us into the Christian community. This work is done through the theological gifts of faith, hope and charity that help us to live in right relationship with God and others, through the celebration of the sacraments that bond us into Christ and his community, and finally through particular personal gifts given to us as individuals to use to help build up the community (1 Cor 12:4-11). As the Holy Spirit works within us to help us put on the mind of Christ and live according to his gospel values, we become more receptive to the Holy Spirit's guidance and more eager to follow where the Spirit leads us.

- *Where and how have I recently experienced the promptings of the Holy Spirit in my life?*
- *How have I most experienced the Holy Spirit drawing me into a deeper relationship with God and Jesus and the Holy Spirit?*
- *What gifts has the Holy Spirit given to me for building up the Christian community and how have I used them?*



When the time for Pentecost was fulfilled, they were all in one place together. And suddenly there came from the sky a noise like a strong driving wind, and it filled the entire house in which they were. Then there appeared to them tongues as of fire, which parted and came to rest on each one of them. And they were all filled with the holy Spirit and began to speak in different tongues, as the Spirit enabled them to proclaim. —*Acts 2:1-4*

Come Holy Spirit

Veni Sancte Spiritus, ("Come Holy Spirit") is the Sequence Prayer before the Gospel in the Mass for Pentecost. Originally an ancient Latin hymn, it reminds us that whenever we pray, we should call upon God and Jesus to send us their Holy Spirit, the bond of love between them, to join us to them and to empower us for a life of witness and service leading to a life with God that will never end.

Come, Holy Spirit, come!
And from your celestial home
Shed a ray of light divine!

Come, Father of the poor!
Come, source of all our store!
Come, within our bosoms shine.

You, of comforters the best;
You, the soul's most welcome guest;
Sweet refreshment here below;

In our labor, rest most sweet;
Grateful coolness in the heat;
Solace in the midst of woe.

O most blessed Light divine,
Shine within these hearts of yours,
And our inmost being fill!

Where you are not, we have naught,
Nothing good in deed or thought,
Nothing free from taint of ill.

Heal our wounds, our strength renew;
On our dryness pour your dew;
Wash the stains of guilt away:

Bend the stubborn heart and will;
Melt the frozen, warm the chill;
Guide the steps that go astray.

On the faithful, who adore
And confess you, evermore
In your sevenfold gift descend;

Give them virtue's sure reward;
Give them your salvation, Lord;
Give them joys that never end.

Amen. Alleluia.

Timmco
INSURANCE

Brian Timm
Susan Ames | Derek Ames

1615 NE Broadway | 503-288-8818
www.timmco.com

AUTO | HOME | BUSINESS | LIFE

Sweetly Aimee, LLC
Custom Wedding and All-Occasion Cakes and Desserts

Aimee Holzschuh
Parishioner & Parent
503.998.7368
www.SweetlyAimee.com

TIM WALTERS RE/MAX
Principal Broker

The most trusted name in Real Estate!

Committed to the NE Portland Neighborhoods

28+ years of experience



503-545-1880 | TimWaltersRealtor@Gmail.com | TimWaltersPc.com

CITY HOME IMPROVEMENT, Inc.

Kitchens | Bathrooms | Additions
Since 1956

Please visit our showroom or call for a free in-home estimate

503-253-7591

www.cityhomeimprovementinc.com
8811 NE Sandy Blvd. Portland, OR 97220

SOCCER CAMP

Bernie Fagan

EST. 1983

Mark McGinnis

Parishioner, Parent
Mortgage Advisor

NMLS 98586
971-300-0484
mark.mcginis@spmc.com
"It's about service!"



Sierra Pacific
MORTGAGE

ROLOFF
Construction

General Contractors | REMODELING | ADDITIONS | KITCHENS | BATHROOMS | DECKS | CCB 140721

JOHN M. WYNN
ATTORNEY AT LAW
McGill, Kapranos & Wynn
Parishioner

Hollywood Professional Center, 3939 NE Hancock St., Ste. 305
jmwpxd@qwestoffice.net • 503-287-7333



PAUL MARRS
MORTGAGE BANKER

503 781 2114

PREMIER MORTGAGE RESOURCES
CO.NMLS 1169 MLO-5212



LANCE MARRS
PRINCIPAL BROKER

503 701 5323

PORTLAND MODERN REAL ESTATE
LICENSED IN OREGON



JOSÉ MESA AUTO WHOLESALE, LLC
"The mobile auto dealer who is always in your neighborhood."
YOUR DISCOUNT AUTO RETAILER SINCE 1992!
sales@josemesa.com 503-789-0438 www.josemesa.com
NEW•USED•BUY•SELL•LEASE•TRADE•CONSIGN•BROKER•APPRAISE

Dr. Phil Doleac, PC
Orthodontics for all ages
www.magic-smiles.com

Beaverton 503.644.7009 Portland 503.255.1694 Scappoose 503.543.4488

A CRAFTSMAN'S TOUCH, LLC
QUALITY WOOD FLOORS
INSTALLATION - REFINISHING
27+ YRS EXPERIENCE CCB #172097
NICK STEVENSON 503-380-8962
Family Parishioners

ADVERTISE YOUR BUSINESS HERE!
Contact Nadia Stickney,
nstickney@themadeleine.edu

ANNE C. STEINER
ESTATE PLANNING
ELDER LAW ATTORNEY

503.946.8361 • 1717 NE 42nd Ave., Suite 2104
PARISHIONER - anne.c.steiner@gmail.com
WILLS - TRUSTS - PROBATE
GUARDIANSHIP - CONSERVATORSHIP

Beaumont Vision:
providing full-service eyecare for all ages, including comprehensive exams, glasses and contacts

Stop by to view our unique eyewear
Most insurances accepted



4331 NE Fremont St
Ph: 503-331-3937

Nathalie Pillsbury
Parishioner
office | 503.245.0685
www.rolloffconstruction.com

THEORY
MORTGAGE

Beating Banks Daily

Brian DuVal
503-850-7667

NMLS 5912, NMLS 1848246

JOHN W. LOBO
PAINTING

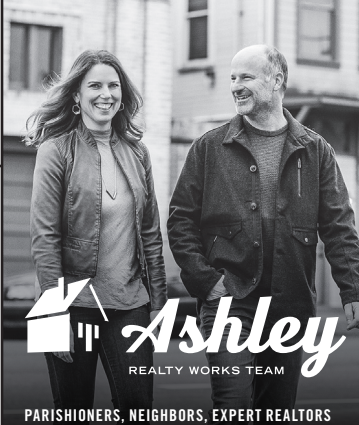
Custom Interior & Exterior
Creative Finishes
503-969-3337 CCB#89027
Licensed Bonded Insured

ADVERTISE YOUR BUSINESS HERE!
Contact Nadia Stickney,
nstickney@themadeleine.edu

PAUL MYERS, Ph.D.,LLC
PSYCHOTHERAPY, COUNSELING & CONSULTING SERVICES

(503) 381-6685 paulmyersphdpdx@gmail.com
www.paulmyersphdpdx.com

ADVERTISE YOUR BUSINESS HERE!
Contact Nadia Stickney, nstickney@themadeleine.edu



Ashley
REALTY WORKS TEAM

PARISHIONERS, NEIGHBORS, EXPERT REALTORS

Wick & Karoline Ashley
karoline@ashleyrealtyworks.com
(503) 819-4851
237 NE Broadway Suite 100

RE/MAX
equity group

ADVERTISE YOUR BUSINESS HERE!

Contact
Nadia Stickney,
nstickney@themadeleine.edu

WILLAMETTE
FINANCIAL ADVISORS, LLC
PERSONALIZED ADVICE FROM TRUSTED ADVISORS

James M Jones
Financial Advisor, CFP®
Parishioner
Direct 503.284.9200
Office 503.7470306
jimj@wfinadv.com



Retrouvaille
A Christian Peer Ministry
A LIFELINE FOR HURTING MARRIAGES

Is your marriage tearing you and your family apart?
Weekends held every February, June & October at Mt. Angel Retreat Home
www.helpourmarriage.com
503-704-7382
Donated by Kevin & Carol McMenamin

ADVERTISE YOUR BUSINESS HERE!
Contact Nadia Stickney, nstickney@themadeleine.edu