

# THIS WEEK AT THE MADELEINE

Furthering the Reign of God, Where All Are Welcome • February 20–21, 2021

## Living within God's Love Lent 2021

### Stations of the Cross

Care for Creation: † February 25, 6:30 pm IN-PERSON LIVESTREAM

Racial Justice: † March 11, 6:30 pm IN-PERSON LIVESTREAM

Human Trafficking: † March 25, 6:30 pm IN-PERSON LIVESTREAM

**Lenten Prayer Services** with Therese Fenzl, tfenzl@themadeleine.edu

Via Zoom: † March 4, 6:30 pm † March 18, 6:30 pm

**Lenten Faith Sharing Groups**—Sundays, Feb. 21–March 21, 4:00 pm

Via Zoom: Contact Darlene Maurer for details, dmaurer@themadeleine.edu

**Confessions**—By appointment; no Communal Penance Service

**Palm Sunday**—Palms available to pick up in front of church

Mass: † March 27, 5:00 pm IN-PERSON ONLY

Mass: † March 28, 10:00 am IN-PERSON LIVESTREAM

**Good Friday Tenebrae** † April 2, Noon IN-PERSON ONLY

### *Paschal Triduum and Easter:*

All services IN-PERSON and LIVESTREAM unless noted

**Holy Thursday** † April 1, 6:30 pm—Evening Mass of the Lord's Supper

**Good Friday** † April 2, 6:30 pm—Celebration of the Lord's Passion

**Easter Vigil** † April 3, 8:30 pm—Vigil in the Holy Night of Easter

**Easter Sunday** † April 4, 8:00 am—Mass IN-PERSON ONLY

10:00 am—Mass

Visit [www.themadeleine.edu/lent](http://www.themadeleine.edu/lent) for details and updates.

## Stations of the Cross HIGHLIGHTING Care for Creation

Thursday, February 25 • 6:30 pm

LIVESTREAM on our YouTube Channel: [youtube.com/themadeleineparish](https://youtube.com/themadeleineparish)

IN-PERSON Sign up: [www.themadeleine.edu/lent-signup](http://www.themadeleine.edu/lent-signup)

### First Sunday of Lent

LENT IS A TIME TO REMEMBER that God first reached out to us. This was not a meagre, one-time gesture like those we often make and withdraw, but a profound, lasting and healing covenant. During this season, we reflect on and ask forgiveness for our own alienating, sinful actions. We ponder in deep prayer and silence that God has invested everything, including a beloved Son, into this relationship.

### PRAY FOR OUR FAITHFULLY DEPARTED

Thomas Goodwin  
Patrick Felten

Minnie Bell Johnson  
Grant Fisher

### PRAYER REQUESTS

For those who are ill, or in need of our prayers

Peggy Barnett

Charlie Phipps

Chad Garvens

Carl Mason

Sharon Sugaski

Sylvia Manzo

Marianne Kersten

Gretchen Stevenson

Larry Mason

### WORSHIP & PRAYER

02/23, Tues. . . . . Sharon Sugaski

02/24, Weds . . . . . Consuelo Hernandez

02/25, Thurs. . . . . Thomas Goodwin †

02/26, Fri. . . . . Minnie Belle Johnson †

02/27, Sat. . . . . Joan Cassidy †

02/28, Sun. . . . . Larry Mason

# Calendar This Week

## SUNDAY, FEBRUARY 21

10:00 am: Mass—Church  
 RCIA Rite of Signing/Election  
 **IN-PERSON**  **LIVESTREAM**

4:00 pm: Lenten Small Faith Group—Zoom

## TUESDAY, FEBRUARY 23

10:00 am: Adoration—Church

## WEDNESDAY, FEBRUARY 24

► School Supply Exchange

8:00 am: Mass—Church



2:30 pm: Music Enrichment (Virtual)



6:30 pm: The Madeleine Book Club—Zoom

7:00 pm: Choir zoom rehearsal

## THURSDAY, FEBRUARY 25

10:00 am: The Madeleine Book Club—Zoom


2:00 pm: School Mass—Church  
 **IN-PERSON**  **LIVESTREAM**

6:30 pm: Stations of the Cross, Care for Creation—Church  
 **IN-PERSON**  **LIVESTREAM**

## FRIDAY, FEBRUARY 26

8:00 am: Mass—Church

## SATURDAY, FEBRUARY 27

5:00 pm: Mass—Church  
 **IN-PERSON ONLY**

## SUNDAY, FEBRUARY 28

9:00 am: First Communion Class—Zoom

10:00 am: Mass-RCIA Penitential Rite—Church  
 **IN-PERSON**  **LIVESTREAM**

## ACCESSING THE MADELEINE IN TIME OF COVID-19

-  **IN-PERSON**—To sign up, visit [www.themadeleine.edu/mass](http://www.themadeleine.edu/mass)  
*NOTE: Weekday Morning Masses do not require pre-registration. Weekend, Thursday School Mass and Holy Day of Obligation Masses do require pre-registration.*
-  **LIVESTREAM**—on our YouTube channel every Sunday at 10:00 am, plus most Thursdays during school, and special events: [www.youtube.com/themadeleineparish](http://www.youtube.com/themadeleineparish)
- **Confession:** By appointment
- **Adoration:** Watch calendar for times
- **Daily Emails:** To sign up, visit [www.themadeleine.edu/email](http://www.themadeleine.edu/email)

# PARISH LIFE

## RCIA – RITE OF ELECTION

This weekend Alex Hows and Olivia Farnsworth participate in the Rite of Election during our 10 am livestream Mass. After affirming their desire to receive the sacraments of initiation at the Easter Vigil, they are admitted to the Elect. As the Rite of Christian Initiation of Adults says, this

Rite “marks the beginning of the period of final, more intense preparation for the sacraments of initiation.” During the remaining weeks in Lent, we join Alex and Olivia as we all reflect on our Baptismal promises. Please continue to encourage them and keep them in your prayers.

## VACCINE OUTREACH MINISTRY SNOW DAYS, STATEWIDE DISTRIBUTION

Vaccine info for older parishioners at [www.themadeleine.edu/vaccine](http://www.themadeleine.edu/vaccine)

Another week in the Vaccine Outreach Ministry, another news broadcast, more updates and hundreds helped. Some notes from a fast and frantic week:

- **Snow Days**—If you were among those who were “snowed out” of your appointment, most of the vaccine sites indicated they would be in contact with you to reschedule.
- **New appointments**—If you visited our Vaccine Outreach Page, you noticed several new sites. We are told that the Safeway/Albertson’s site is now taking appointments. If you are trying to make an appointment and not having luck at one link, try another one on our page.
- **Hot Sheet**—In the Breaking News section, we have a new Hot Sheet link, which provides up-to-the-minute updates.
- **Statewide distribution**—The Oregon Health Authority sent our page link and



information out to 1,800 faith communities statewide. While our information is specific to the Portland Metro area, our outreach ministry toolkit is universal.

If you or a family member need help navigating the COVID vaccine gauntlet, email to [vaccine@themadeleine.edu](mailto:vaccine@themadeleine.edu). You can visit our Vaccine Outreach information page at [www.themadeleine.edu/vaccine](http://www.themadeleine.edu/vaccine). We are updating the page as often as we find new information to post, so check back frequently.

## MADELEINE PROVISIONS—SCHOOL FUNDRAISER ON WHOLESALE MEATS AND SEAFOOD

Orders close February 23 • [www.themadeleine.edu/provisions](http://www.themadeleine.edu/provisions)

A few of The Madeleine parents in the food and wine industry have teamed up to bring you Wagyu Beef, Kurobuta Pork, Gourmet Sausages, Sushi grade Tuna, New Zealand Ora-King Salmon and more - all at wholesale prices far below what you could pay locally. It’s all being done at cost plus a 10% donation going back to the school for the Area of Greatest Need.

Orders can be placed and paid for online at [www.themadeleine.edu/provisions](http://www.themadeleine.edu/provisions). Orders

are due NO LATER THAN Tuesday, February 23 @ 6pm. Item PICK UP will be under the new tent at the school’s main entrance on Friday, February 26, from 2 to 5 pm. We will be observing all current COVID safety regulations to make this a safe and enjoyable experience.

Email or text Darryl Fowler ([dcfowler@mac.com](mailto:dcfowler@mac.com) / 323-854-3333) if you have questions about the products or this new program.

## THE WORD CATHOLIC MEANS “UNIVERSAL”

Ave Maria Press Explores: Catholicism Around the World will examine the heart of what we believe, who we are, and how we worship throughout the globe, and you’ll hear from fellow Catholics living and working in countries such as Ireland, India, South Africa, Cameroon, Mexico,

and Haiti.

Journey around the world with Ave Explores to learn more about the diversity and richness of the global Church.

Information and registration available at [www.avemariapress.com/aveexplores-series/signup](http://www.avemariapress.com/aveexplores-series/signup)

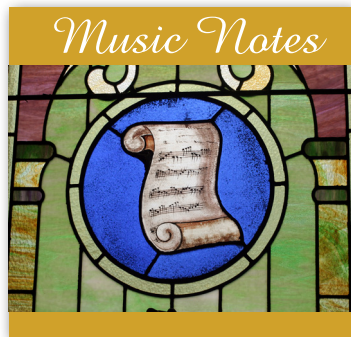


# GOD HELP US LIVE WITHIN YOUR LOVE

Lent has always been a challenge to me. I often find myself literally “wandering in the desert” for forty days – doing my best to fast from meat on Fridays (old habits die hard!), do good deeds, and choose music without even the hint of an “Alleluia.”

That brief discourse is one reason that I am grateful we at The Madeleine have a Lenten theme each year. Between our Lenten devotional booklets, which is filled with reflections by our parishioners, to our theme song that we sing each week at Mass, I am inspired to move in a positive spiritual direction for the next forty days. In short, it keeps me focused!

As you know by now, our Lenten theme this year is “Living Within God’s Love.” Choir member and parishioner Marilyn Robb is God’s “instrument” for this project – helping to craft the theme, overseeing the Devotional Booklet and writing the lyrics for our Madeleine Theme Song. Marilyn has always said the creative process comes to her at all hours of the day (and night) – definitely inspired by the Holy Spirit! The title for this year’s song is, “God Help Us Live Within Your Love”. The lyrics consist of three short verses,



which focus on the acts of temptation, repentance, and discipleship. Looking at the rhyme scheme, I arranged Marilyn’s words to one of my favorite Gospel tunes, “Jesus, Keep Me Near the Cross.” Published in 1869, the tune was composed by William Howard Doane, with lyrics by Fanny Crosby. Known as the “Queen of Gospel Song Writers,” Crosby was the author

of over 8,500 gospel songs. Blind at six weeks of age, she began composing at age six and had a knack for painting vivid scenes with her words – even though she could not see. “Near the Cross” (as it sometimes is called) was Crosby’s depiction of the importance of the Cross in our lives. She believed that without the Cross, there is no salvation...no eternal life...and no hope. And, if we don’t stay near the Cross, we lose our focus in life.

With the inspiration of Marilyn’s words adapted to this poignant Gospel song, I look forward to keeping my focus on the Cross – and the love of God this Lent. Thank you, Marilyn, for being our own “Fanny Crosby” at The Madeleine!

[www.youtube.be/jjsvxx97MSs](http://www.youtube.be/jjsvxx97MSs)

—Maria Manzo

## PARISH LIFE

### BOOK CLUB NEWS

Our February book selection, *Someone Knows My Name*, by Lawrence Hill and W.W. Norton, is an excellent choice for our discussion during Black History Month. We would love to have you join us for our Zoom meeting next week. For more information, please contact our MBC Ministry Coordinator: Gretchen Stevenson, [gypsyfrau47@yahoo.com](mailto:gypsyfrau47@yahoo.com) or 503-312-6834.

### MARRIAGE IN CHRIST AT-HOME SEMINAR

5-week program • Free

In honor of National Marriage Week (Feb. 7-14) and as a Lenten resource, the Marriage in Christ At Home seminar is free for couples who sign up by March 31, 2021. Once registered, access is free through May 31, 2021. Information and registration at [www.marriageinchrist.org](http://www.marriageinchrist.org)

### STILL A FEW SPACES LEFT

#### 2021-22 at The Madeleine School

Spread the word! We still have space left in 1st grade for the 2021–2022 school year. Word of mouth has always proven to be our strongest form of marketing, so text your friends and neighbors and invite them to come for a tour and submit an application.

### 4 STAGES OF MARRIAGE

The 4 stages of marriage are: (1) Romance, (2) Disillusionment, (3) Misery, and (4) Awakening. Many marriages experience the first 3 Stages. Marriages that end in divorce never make it to the 4th Stage of Awakening. If your marriage suffers from Disillusionment or Misery please contact Retrouvaille (pronounced retro-vi with a long i). For confidential information about or to register for the program beginning with a weekend on March 5-7, please call 1-503-225-9191 or visit [www.helpourmarriage.org](http://www.helpourmarriage.org)

## WEEKLY MASS TIMES

### Masses:

Wednesday ..... 8:00 am  
Thursday (School Mass) ..... 2:00 pm  
Friday ..... 8:00 am  
Saturday Vigil ..... 5:00 pm  
Sunday ..... 10:00 am

► Sign up for in-person Saturday & Sunday Mass & Thursday School Mass at [www.themadeleine.edu/mass](http://www.themadeleine.edu/mass) or call the Parish Office

► Livestream 10:00 am Sunday and 2:00 pm Thursday at [youtube.com/themadeleineparish](http://youtube.com/themadeleineparish)

**Penance** . . . By appointment; call Parish Office

## PARISH OFFICE

**Hours** . . . . . Monday–Friday, 10:00 am–2:00 pm

**Phone:** 503-281-5777 . . . . . **Fax:** 503-281-0673

**School Office** . . . . . 503-288-9197

## PARISH STAFF

**Rev. Mike Biewend**—Pastor  
[fathermike@themadeleine.edu](mailto:fathermike@themadeleine.edu) . . . . . ext. 11

**Father Amalraj Rayappan**—Priest

**Deacon Mike O’Mahoney**—Permanent Deacon  
[deaconmike@themadeleine.edu](mailto:deaconmike@themadeleine.edu)

**Carol Glasgow**—School Principal  
[cglasgow@themadeleine.edu](mailto:cglasgow@themadeleine.edu) . . . 503-288-9197

**James Wurzer**—Business Manager  
[jwurzer@themadeleine.edu](mailto:jwurzer@themadeleine.edu) . . . . . ext. 18

**Darlene Maurer**—Pastoral Assistant  
[dmaurer@themadeleine.edu](mailto:dmaurer@themadeleine.edu) . . . . . ext. 25

**Therese Fenzl**—Director of Spiritual Ministries  
[tfenzl@themadeleine.edu](mailto:tfenzl@themadeleine.edu) . . . . . ext. 16

**Maria Manzo**—Director of Music  
[mmanzo@themadeleine.edu](mailto:mmanzo@themadeleine.edu) . . . . . ext. 13

**Jackie Dooris**—Events Manager  
[jdooris@themadeleine.edu](mailto:jdooris@themadeleine.edu) . . . . . ext. 17

**Nadia Stickney**—Bookkeeper  
[nstickney@themadeleine.edu](mailto:nstickney@themadeleine.edu) . . . . . ext. 14

**Mary Prusso**—Registration/Special Events  
[mprusso@themadeleine.edu](mailto:mprusso@themadeleine.edu) . . . . . ext. 12

**Janeen Reilly**—Parish Administrator  
[jreilly@themadeleine.edu](mailto:jreilly@themadeleine.edu) . . . . . ext. 10

**Terry Silva**—Facilities Support  
[tsilva@themadeleine.edu](mailto:tsilva@themadeleine.edu) . . . . . ext. 17

**Rich Hammons**—Director of Communications  
[rhammons@themadeleine.edu](mailto:rhammons@themadeleine.edu) . . . . . ext. 29

## SACRAMENTS

**Marriages, Funerals, Anointing of the Sick**—Fr. Mike . . . . . ext. 11

**Infant Baptism**—Darlene Maurer . . . . . ext. 25

**First Reconciliation, First Eucharist**—Trisha Mumm . . . . . ext. 27

**RCIA**—Christi Bohmbach, [rcia@themadeleine.edu](mailto:rcia@themadeleine.edu)

**Confirmation**—Fr. Mike . . . . . ext. 11

## COUNCILS & CONTACTS

**Pastoral Council**—Ron Oliver . . . . . 503-281-9070

**Finance Council**—Jim Jones . . . . . 503-284-3301

**Buildings & Grounds**—Erin Couch . . . 503-281-9575

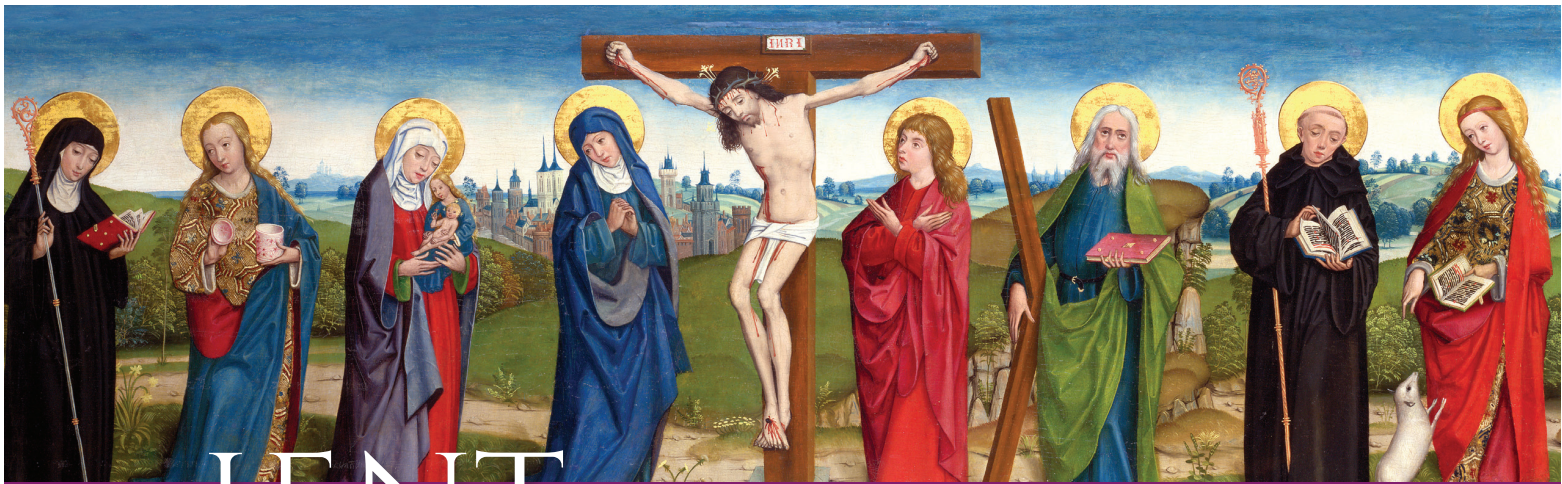
**School Advisory**—Catherine Glavan, 503-875-4679

**Facility Requests**—[themadeleine.edu/facilities](http://themadeleine.edu/facilities)

**Maintenance Requests**—James Wurzer  
[jwurzer@themadeleine.edu](mailto:jwurzer@themadeleine.edu) . . . . . ext. 18

**Bulletin submissions due 5:00 pm Tuesday**

Email to [bulletin@themadeleine.edu](mailto:bulletin@themadeleine.edu)



# LENT 2021

			WEDNESDAY	THURSDAY	FRIDAY	SATURDAY
			<b>17 FEBRUARY</b> <b>ASH WEDNESDAY</b> How will you turn back to God and change your life this Lent. <i>Psalm 51: 12</i>	<b>18</b> <b>Deny Yourself</b> What must you leave behind to follow Jesus more closely this Lent? <i>Luke 9:23</i>	<b>19</b> <b>Fast from Food</b> Share some food today with those who are poor and hungry. <i>Isaiah 58:7</i>	<b>20</b> <b>Listen to Me, O God</b> Take some time to lift your voice to God in prayer. <i>Psalm 86:1-2</i>
SUNDAY	MONDAY	TUESDAY				
<b>21</b> <b>God's Kingdom Is Near</b> Be more attentive to God's presence in your life today. <i>Mark 1:14-15</i>	<b>22</b> <b>Love Your Neighbor as Yourself</b> How might you be more loving to others today? <i>Leviticus 19:18</i>	<b>23</b> <b>Jesus' Prayer</b> Take time to say the Our Father and let it become your own prayer to God. <i>Matthew 6:9-13</i>	<b>24</b> <b>Have Mercy, O God</b> How might you best make reconciliation with someone today? <i>Psalm 51:3-4</i>	<b>25</b> <b>Give Good Things</b> How might you imitate God's great generosity and give to others? <i>Matthew 7:7-11</i>	<b>26</b> <b>Fast from Anger</b> Pray for someone with whom you are angry and let your anger go. <i>Matthew 5:23-24</i>	<b>27</b> <b>Love Your Enemies</b> How might you respond to Jesus' call to greater love for others? <i>Matthew 5:43-45</i>
<b>28</b> <b>You Are My Beloved Child</b> Thank God for adopting you as a beloved child. <i>Mark 9:7</i>	<b>1 MARCH</b> <b>Stop Judging</b> Strive today to be less judgmental about others and their actions. <i>Luke 6:37</i>	<b>2</b> <b>Hear God's Word</b> How might you find more time to listen to God's Word for you today? <i>Isaiah 1:10</i>	<b>3</b> <b>To Serve Not Be Served</b> Jesus encourages us to serve the needs of others not our own. <i>Matthew 20:28</i>	<b>4</b> <b>God Probes Our Heart</b> Be with Jesus as he reveals what you need to draw closer to him. <i>Jeremiah 17:10</i>	<b>5</b> <b>Fast from Violence</b> God sent Jesus to show us how to love and do good for others. <i>John 3:16</i>	<b>6</b> <b>Father I Have Sinned</b> Like the prodigal son, let us go to God to ask for forgiveness. <i>Luke 15:21</i>
<b>7</b> <b>You Are God's Temple</b> What most needs preparation for God to come to dwell in you? <i>John 2:18</i>	<b>8</b> <b>Thirst for God</b> Be attentive to how much you want to draw nearer to God this Lent. <i>Psalm 42:3</i>	<b>9</b> <b>Forgive Others</b> Whom might you most need to forgive today to restore a relationship? <i>Matthew 21:35</i>	<b>10</b> <b>Obey God's Commands</b> Which commandment do you most need to attend to today? <i>Matthew 5:19</i>	<b>11</b> <b>Listen to God's Voice</b> What has God most been prompting you to do this Lent? <i>Jeremiah 7:23</i>	<b>12</b> <b>Fast from Idolatry</b> How might you put God first in your heart and in your life? <i>Mark 12:29</i>	<b>13</b> <b>God Will Heal Us</b> From what do you most want to have God heal you today? <i>Hosea 6:1</i>
<b>14</b> <b>God Is Rich in Mercy</b> Consider the ways God has blessed you this Lent. <i>Ephesians 2:4</i>	<b>15</b> <b>A New Creation</b> How has God been working to create something new in you this Lent? <i>Isaiah 65:1-2</i>	<b>16</b> <b>Fear Not</b> Hand your fear over to God who is with you and will give you courage. <i>Psalm 46:2-3</i>	<b>17</b> <b>I Cannot Forget You</b> Like a mother, God cannot forget you and will always be with you. <i>Isaiah 49:15</i>	<b>18</b> <b>The Father Sent Me</b> How might you respond to Jesus' presence to reveal God to you? <i>John 5:37-38</i>	<b>19 ST. JOSEPH</b> <b>Fast from Ignorance</b> Spend time today learning more about Jesus and his message. <i>John 7:28-29</i>	<b>20</b> <b>Who Is Jesus?</b> Answer for yourself who you think Jesus is and what he has done. <i>John 7:40-41</i>
<b>21</b> <b>A New Covenant</b> Rejoice that God has come to dwell in your heart. <i>Jeremiah 31:33</i>	<b>22</b> <b>Sin No More</b> Now is the time to change whatever draws you away from godly ways. <i>John 8:11</i>	<b>23</b> <b>Seek God</b> Spend time today considering where God is most at work in your life. <i>John 8:28-29</i>	<b>24</b> <b>Remain in My Word</b> Take time to quietly ponder Jesus' words today. <i>John 8:31-32</i>	<b>25 THE ANNUNCIATION</b> <b>Recall God's Works</b> Praise and thank God today for the beauty of creation. <i>Psalm 104:4-5</i>	<b>26</b> <b>Fast from Revenge</b> Put aside all desire to repay someone for any evil done to you. <i>John 10:31-32</i>	<b>27</b> <b>Be Loyal</b> Jesus, let us be loyal to God's ways even if it means hardship. <i>John 11:47-50</i>
<b>28 PALM SUNDAY</b> <b>God's Suffering Servant</b> How might you share in the sufferings of others today? <i>Philippians 2:8-9</i>	<b>29</b> <b>Bring Forth Justice</b> How can you create right relationships (justice) as Jesus did? <i>Isaiah 42:1</i>	<b>30</b> <b>One Will Betray Me</b> How have you most betrayed your loyalty and commitment to Jesus? <i>John 13:21</i>	<b>31</b> <b>Done for You</b> Draw courage from Jesus who sees his suffering from God's viewpoint. <i>Isaiah 50:7</i>	<b>1 APRIL HOLY THURSDAY</b> <b>My Body Given for You</b> Share yourself and your food as Jesus did. <i>1 Corinthians 11:23-26</i>	<b>2 GOOD FRIDAY</b> <b>Behold, the Man!</b> Spend time today contemplating Jesus in his last hours. <i>John 19:4-5</i>	<b>3 EASTER VIGIL</b> <b>Jesus Is Risen!</b> How might you share this Good News with others today? <i>Mark 16:6-8</i>



# Lent 2021

# Forty Footsteps for Forty Days

Sunday

Monday

Tuesday

Wednesday

Thursday

Friday

Saturday

## Forty Footsteps for Forty Days!!!

Jesus walked through deserts, waters, mountains, and cities to do his work. What work did he do? Walk with Jesus to Easter and find out!

17 FEBRUARY

Lent starts today!

We start our walk through Lent today. Ask a parent: How will we keep Lent this year?

18 We read the Bible more often in Lent. Can you and a parent find this verse? 2 Corinthians 6:2

Read it aloud. Say it together as a prayer for meals or before bed!

19

Jesus walked through many kinds of places. Fill a clay flowerpot saucer with sand to remember the desert that Jesus walked through.

20

21 1st Sunday of Lent

Jesus went to the desert to pray. Jesus liked to pray. "Abba!" which means "Father!" What will you pray?

22

In the desert, Jesus fasted for 40 days and 40 nights. Fasting means going without something. Jesus went without food.

23

When we fast in Lent, we give up something we like. The things we like are good! But when we go without them, we "taste" another good thing: freedom.

ICE CREAM

24

In the desert, Jesus was hungry. But he wanted to taste freedom.

Instead of time spent on getting food, Jesus had free time to wander and to think. Free time to listen to God.

25

Lent is like a desert. For a while, we do without some things.

For a while, we want more free time to do and to think, to love and to listen to God.

26

"Ask and it will be given to you," Jesus says. God wants to give us freedom. Write down ways you want to be free and put them with your sand.

27

Now think of ways Jesus was free:

FREE TO FORGIVE!

Free to forgive. Free to teach. Free to love. Write down the one you like best and put it in your sand pile.

28 2nd Sunday of Lent

Jesus and his friends go to a mountain. Find a rock that reminds you of a mountain and add it to your sand.

1 MARCH

Imagine being on the mountain.

Now you hear a voice: "This is my beloved child. Listen to him!" What's the best thing Jesus could say to you?

2

On a mountain you look and see the world a new way. Here's another way: Cut a frame with a 2 x 2 window. Take it outside. What do you see?

3

On the mountain the disciples saw something new, too: Jesus shining like the sun. Can you get up tomorrow to see something new?

4

A rock is hard! Climbing a mountain is hard! Why did Jesus do it?

5

Jesus didn't stay on the mountain. He came back down and kept walking—and talking! Ask a parent to read to you his story in Matthew 17:1-13.

6

Close your eyes for a moment. What do you hear? Now try to listen deeper. What might God be saying to you?

7 3rd Sunday of Lent

On a long walk, you need water! Add a bowl of water along side your sand.

8

Jesus was thirsty, so he stopped in a strange town and asked a woman for water. Who could use a drink in your house right now?

9

Jesus asked for water, but he also told the woman, "I could give you water so that you'd never be thirsty again!"

Ask each family member to finish this sentence: I wish I would never again be \_\_\_\_\_

10

Jesus said, "The water I shall give will overflow into eternal life." What gifts of God are so good they should go on forever and ever?

11

The woman put down her bucket of water and ran to her friends. "Is this the Messiah, the chosen one of God?"

What do you think about Jesus? What name would you give him?

12

God's gift of water reminds us of God's gift of baptism. Ask your parent: When were you baptized? Who was there? What happened?

13

Read a verse or two from the Bible and then draw a picture about what you read. Try Psalm 23!





# COMMUNITY DIRECTORY

Furthering the Reign of God, Where All Are Welcome

Updated January 14, 2021

## MASS TIMES

(Note: These are current during COVID restrictions and may change frequently)

**Weekend Mass**—Pre-registration required; see below  
Saturday Vigil ..... 5:00 pm  
Sunday ..... 10:00 am

**Weekdays**—Advance registration not required; please arrive 15 minutes early  
Thursday (during school year, Church) ..... 2:00 pm

**Attendance & Livestreams** (Weekends & special events)  
▷ **In-Person Registration**—www.themadeleine.edu/mass  
▷ **Livestream**—www.youtube.com/themadeleineparish

**Penance** ..... By appointment; call parish office

## PARISH OFFICE

**Hours:** Monday–Friday, 10:00 am–2:00 pm

**Phone:** 503-281-5777 • **Fax:** 503-281-0673

**School Office** ..... 503-288-9197

## PARISH STAFF

**Rev. Mike Biewend**—Pastor  
fathermike@themadeleine.edu ..... ext. 11

**Deacon Mike O'Mahoney**—Permanent Deacon  
deaconmike@themadeleine.edu

**Carol Glasgow**—School Principal  
cglasgow@themadeleine.edu ..... 503-288-9197

**James Wurzer**—Business Manager  
jwurzer@themadeleine.edu ..... ext. 18

**Darlene Maurer**—Pastoral Assistant  
dmaurer@themadeleine.edu ..... ext. 25

**Maria Manzo**—Director of Music  
mmanzo@themadeleine.edu ..... ext. 13

**Therese Fenzl**—Director of Spiritual Ministries  
tfenzl@themadeleine.edu ..... ext. 16

**Jackie Dooris**—Events Manager  
jdooris@themadeleine.edu ..... ext. 17

**Nadia Stickney**—Bookkeeper  
nstickney@themadeleine.edu ..... ext. 14

**Mary Prusso**—Registration/Special Events  
mprusso@themadeleine.edu ..... ext. 12

**Janeen Reilly**—Parish Administrator/Special Events  
jreilly@themadeleine.edu ..... ext. 10

**Terry Silva**—Facilities Support  
tsilva@themadeleine.edu ..... ext. 17

**Rich Hammons**—Director of Communications  
rhammons@themadeleine.edu ..... ext. 29

## SACRAMENTS

**Anointing of the Sick**—Father Mike  
fathermike@themadeleine.edu ..... ext. 11

**Marriages, Funerals**—Father Mike  
fathermike@themadeleine.edu ..... ext. 11

**Infant Baptism**—Darlene Maurer  
dmaurer@themadeleine.edu ..... ext. 25

**First Reconciliation, First Communion**—  
Trish Mumm ..... sac-prep@themadeleine.edu

**Confirmation**—Stephanie Fernandes  
confirmation@themadeleine.edu

**RCIA**—Christi Bohmbach ..... rcia@themadeleine.edu

## COMMITTEES/COUNCILS/MINISTRIES

### ADMINISTRATION

**Pastoral Council**—Ron Oliver  
oliverr@easystreet.net ..... 503-281-9070

**Finance Council**—Jim Jones  
jjones@sagcmc.com ..... 503-284-3301

**Buildings and Grounds**—Erin Couch  
erin@creativeabandon.com ..... 503-281-9575

**School Advisory Council**—Catherine Glavan  
catherine\_geary@hotmail.com ..... (503) 875-4679

**Safety & Security Committee**—Dan O'Brien  
pdxdan27@gmail.com ..... 503-206-2843

**Parish Center Management & Events**—Jackie Dooris  
jdooris@themadeleine.edu ..... ext. 17

**Facilities Requests**—Janeen Reilly  
www.themadeleine.edu/facilities ..... ext. 10

**Field of Dreams Scheduling**—James Wurzer  
jwurzer@themadeleine.edu ..... ext. 18

**Gym Scheduling**—Angela Rosebrook  
arosebrook@themadeleine.edu ..... 503-288-9197

**Bulletin**—Rich Hammons ..... bulletin@themadeleine.edu

**Bulletin Advertising**—Nadia Stickney  
nstickney@themadeleine.edu ..... ext. 14

**Art & Environment**—Susie Andersen  
susan.andersen@comcast.net ..... 503-231-9882

### LITURGY & WORSHIP

**Ministry Scheduling**—Martin Schneider  
ministries@themadeleine.edu ..... 503-970-3285

**Sacristan**—Patt Seeronen  
pattseeronen@comcast.net ..... 503-502-0368

**Eucharistic Ministers**—Sandy Turner  
bobnstun@comcast.net ..... 503-282-3516

**Ministers of Hospitality**—Martin Schneider  
mgs21168@gmail.com ..... 503-970-3285

**Altar Server Coordinator**—Darlene Maurer  
dmaurer@themadeleine.edu ..... 503-281-5777

**Marriage Prep**—Father Mike; fathermike@themadeleine.edu

**Marriage Mentoring**—Henry & Tracy Hooper  
henryhooper@gmail.com

**Lectors**—  
John Seeronen, johnseeronen@comcast.net .. 503-284-1874  
Donna Mason ..... donnamarymason@comcast.net

### SPIRITUAL LIFE & PRAYER

**Music Ministry**—Maria Manzo  
mmanzo@themadeleine.edu ..... ext. 13

**Contemplative Prayer**—  
Anne Feeney, akfeeney@gmail.com ..... 503-335-3115  
Claudia Toth ..... claudiatoth@live.com

**Children's Liturgy of the Word**—  
Veronica Plance ..... veronica.p.rimg@gmail.com  
Siobahn Feeney ..... siobahn\_feeney@yahoo.com

**Men's Group**—Bob Turner  
bobnstun@comcast.net ..... 503-282-3516

**Silver Exchange Women's Group**—  
Patty Graham ..... 360-433-1199

**Faith Sharing**—  
Marilyn Robb, altoten@hotmail.com ..... 360-694-0528  
Donna Mary Mason ..... donnamarymason@comcast.net

**Adoration**—Bill Wieber  
billwieber@gmail.com ..... 503-280-2347

**Retreat Ministry**—  
Sister Carmel Irving ..... carmel@soulsongcounseling.com  
Sister Cathie Boerboom ..... cathieproff@gmail.com

**Spiritual Direction**—  
Sister Carmel Irving ..... carmel@soulsongcounseling.com  
Sister Cathie Boerboom ..... cathieproff@gmail.com

### PARISH & COMMUNITY LIFE

**PDXCatholic Tots**—Ann Hart ..... ahart@themadeleine.edu

**Soup with Friends**—Mary Clare O'Brien ..... 503-309-7635  
Margaret O'Connell ..... margaretroconnell@gmail.com

**Knights of Columbus**—Dan Evans  
danbuick.evans@gmail.com ..... 503-701-5581

**Altar Society**—  
Jean Lynch ..... grnmaje1@q.com  
Mary Clare O'Brien ..... 503-309-7635

**Book Club**—Gretchen Stevenson  
gypsyfrau47@yahoo.com ..... 503-312-6834

**Peace & Justice**—  
Donna Prosser ..... donna.maffepdx.com

**Care for Creation**—  
Shauna Mohr ..... shauna.a.mohr@gmail.com

**God's Gardeners**—  
Terry Silva, tsilva@themadeleine.edu ..... ext. 17

**Cub Scouts & Boy Scouts**—Matt Wilson  
mwilson@anchorqea.com ..... 503-347-8511

### OUTREACH

**Blanchet House**—Bill Johnson  
johnson0060@comcast.net ..... 503-281-2230

**Janus Greenhouse**—Lisa Hawkins  
lhawkins2916@comcast.net ..... 503-493-0782

**Interfaith Alliance on Poverty**—  
Dave Albertine ..... davea51@gmail.com

**Community of Hope**—Denise Mathes  
dmathes155@gmail.com ..... 202-329-1351

**Prison Ministry**—VACANT, need leader  
Contact Father Mike to volunteer ..... 503-281-5777

**St. Vincent de Paul**—  
Marge Westrup, mwestrup1234@aol.com ... 503-281-7075  
Mary Clare O'Brien ..... 503-309-7635

**The Haitian Project**—  
Steve Holmes, steveholmes@shtrucking.com 503-706-7937  
Megan Callahan, Garage Sale Chairperson  
meganm1979@yahoo.com ..... 503-806-6871

**Maybelle Center**—Paul & Kathy Kester  
paulandkathykester@gmail.com

**God's Helpers**—Fr. Mike  
fathermike@themadeleine.edu ..... ext. 11

**Refugee Ministry**—Amanda Gray  
aeg@pbl.net

**Job Search Ministry**—Manus O'Donnell  
manus@modassociates.com

### PASTORAL CARE MINISTRIES

**The New Madeleines**—  
Anne O'Mahoney ..... annecomahoney@gmail.com  
Julie Slavik ..... julies4143@gmail.com

**Homebound**—  
Carol Baier ..... caroljeanbaier@gmail.com

**Grief Ministry**—VACANT, need leader  
Contact Father Mike to volunteer ..... 503-281-5777

**Grief Recovery**—  
Sister Carmel Irving ..... carmel@soulsongcounseling.com  
Sister Cathie Boerboom ..... cathieproff@gmail.com

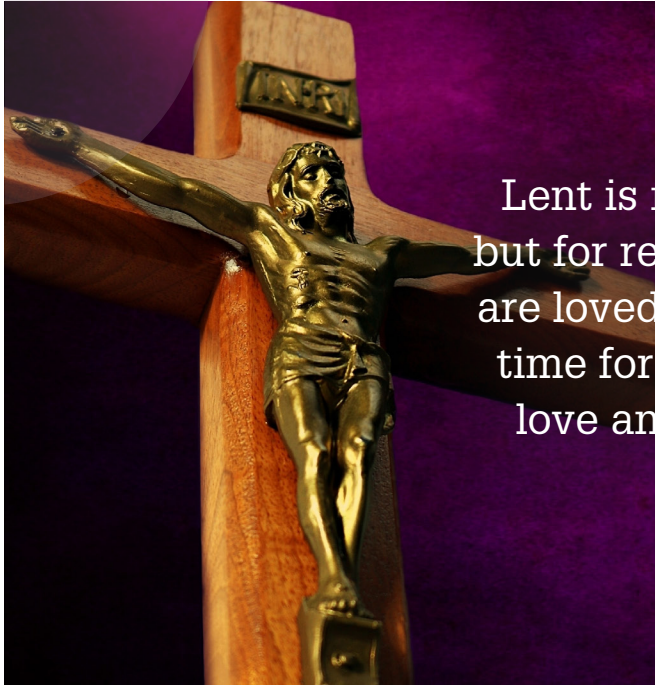
**Funeral Receptions**—Jackie Dooris  
jdooris@themadeleine.edu ..... ext. 17

**Welcome Home/Returning Catholics**—Dan LaGrande  
oregonuy06@gmail.com ..... 503-281-9998



# The First Sunday of Lent

FEBRUARY 21, 2021



Lent is not a time for useless sermons, but for recognizing that our lowly ashes are loved by God. It is a time of grace, a time for letting God gaze upon us with love and in this way *change our lives*.

—Pope Francis, February 26, 2020

On the First Sunday of Lent, begin your journey with self-reflection and allow yourself to experience the mercy of the Lord. How will you renew your commitment to prayer, fasting and almsgiving this season?

## Catholic Relief Services Rice Bowl

Lent looks a little different this year. Catholic Relief Services has resources to keep your family engaged, including reflections, meatless recipes and stories from around the world. Participate in CRS Rice Bowl and learn more at <https://www.crsricebowl.org/families>.





**Timmco**  
INSURANCE

Brian Timm  
Susan Ames | Derek Ames

1615 NE Broadway | 503-288-8818  
www.timmco.com

AUTO | HOME | BUSINESS | LIFE



**Sweetly Aimee, LLC**  
Custom Wedding and All-Occasion Cakes and Desserts

Aimee Holzschuh  
Parishioner & Parent  
503.998.7368  
www.SweetlyAimee.com



**TIM WALTERS**  
Principal Broker

The most trusted name in Real Estate!

Committed to the NE Portland Neighborhoods

28+ years of experience



503-545-1880 | TimWaltersRealtor@Gmail.com | TimWaltersPc.com



**CITY HOME IMPROVEMENT, Inc.**

Kitchens | Bathrooms | Additions  
*Since 1956*

Please visit our showroom or call for a free in-home estimate

**503-253-7591**

www.cityhomeimprovementinc.com  
8811 NE Sandy Blvd. Portland, OR 97220



**SOCCER CAMP**  
*Bernie Fagan*  
EST. 1983

**Mark McGinnis**

Parishioner, Parent  
Mortgage Advisor

NMLS 98586  
971-300-0484  
mark.mcginis@spmc.com  
"It's about service!"





**ROLOFF**  
Construction

**JOHN M. WYNN**  
ATTORNEY AT LAW  
**McGill, Kapranos & Wynn**  
Parishioner

Hollywood Professional Center, 3939 NE Hancock St., Ste. 305  
jmwpxd@qwestoffice.net • 503-287-7333



**PAUL MARRS**  
MORTGAGE BANKER

503 781 2114

PREMIER MORTGAGE RESOURCES  
CO.NMLS 1169 MLO-5212



**LANCE MARRS**  
PRINCIPAL BROKER

503 701 5323

PORTLAND MODERN REAL ESTATE  
LICENSED IN OREGON



**JOSÉ MESA AUTO WHOLESALE, LLC**  
"The mobile auto dealer who is always in your neighborhood."  
**YOUR DISCOUNT AUTO RETAILER SINCE 1992!**

sales@josemesa.com 503-789-0438 www.josemesa.com  
**NEW•USED•BUY•SELL•LEASE•TRADE•CONSIGN•BROKER•APPRAISE**



**Dr. Phil Doleac, PC**  
Orthodontics for all ages  
www.magic-smiles.com

**Beaverton** **Portland** **Scappoose**  
503.644.7009 503.255.1694 503.543.4488

**A CRAFTSMAN'S TOUCH, LLC**  
QUALITY WOOD FLOORS  
INSTALLATION - REFINISHING  
27+ YRS EXPERIENCE CCB #172097  
**NICK STEVENSON 503-380-8962**  
Family Parishioners

**ADVERTISE YOUR BUSINESS HERE!**  
Contact Nadia Stickney,  
nstickney@themadeleine.edu

**ANNE C. STEINER**  
ESTATE PLANNING  
ELDER LAW ATTORNEY

503.946.8361 • 1717 NE 42nd Ave., Suite 2104  
PARISHIONER - [anne.c.steiner@gmail.com](mailto:anne.c.steiner@gmail.com)  
WILLS - TRUSTS - PROBATE  
GUARDIANSHIP - CONSERVATORSHIP

**Beaumont Vision:**  
providing full-service eyecare for all ages, including comprehensive exams, glasses and contacts

Stop by to view our unique eyewear  
Most insurances accepted



**4331 NE Fremont St**  
**Ph: 503-331-3937**

**Nathalie Pillsbury**  
Parishioner  
office | 503.245.0685  
www.rolloffconstruction.com



**THEORY**  
MORTGAGE

Beating Banks Daily

**Brian DuVal**  
503-850-7667

NMLS 5912, NMLS 1848246

**JOHN W. LOBO PAINTING**  
Custom Interior & Exterior  
Creative Finishes  
503-969-3337 CCB#89027  
Licensed Bonded Insured


**ADVERTISE YOUR BUSINESS HERE!**  
Contact Nadia Stickney,  
nstickney@themadeleine.edu



**PAUL MYERS, Ph.D.,LLC**  
PSYCHOTHERAPY, COUNSELING & CONSULTING SERVICES

(503) 381-6685 paulmyersphdpdx@gmail.com  
www.paulmyersphdpdx.com

**ADVERTISE YOUR BUSINESS HERE!**  
Contact Nadia Stickney, nstickney@themadeleine.edu



**Ashley**  
REALTY WORKS TEAM

PARISHIONERS, NEIGHBORS, EXPERT REALTORS

**Wick & Karoline Ashley**  
karoline@ashleyrealtyworks.com  
(503) 819-4851  
237 NE Broadway Suite 100



**T.C. O'LEARY'S**  
a little irish  
PUB

WEEKEND BRUNCH  
LIVE MUSIC MONDAYS & FRIDAYS  
OUTDOOR SEATING  
WHISKEY CLUB  
RED SOX GAMES  
AVAILABLE FOR PRIVATE EVENTS

Come for brunch after Mass!



Parishioners  
Tom, Siobhan  
& Aine O'Leary  
2926 NE  
Alberta  
503-477-5969



**WILLAMETTE**  
FINANCIAL ADVISORS, LLC  
PERSONALIZED ADVICE FROM TRUSTED ADVISORS

**James M Jones**  
Financial Advisor, CFP®  
Parishioner  
Direct 503.284.9200  
Office 503.7470306  
jimj@wfinadv.com




**Retrouvaille**  
A Christian Peer Ministry  
A LIFELINE FOR  
HURTING MARRIAGES

Is your marriage tearing you and your family apart?  
Weekends held every February, June & October at Mt. Angel Retreat Home  
**www.helpourmarriage.com**  
**503-704-7382**  
Donated by Kevin & Carol McMenamin