



THIS WEEK AT THE MADELEINE

Furthering the Reign of God, Where All Are Welcome • September 19-20, 2020

NEW MADELEINE WEBSITE LAUNCHES THIS WEEKEND

It's been a long time, but finally www.themadeleine.edu is set for a new look. Sometime this weekend, you'll visit our website and discover our website looks a whole lot different... like the screenshots below.

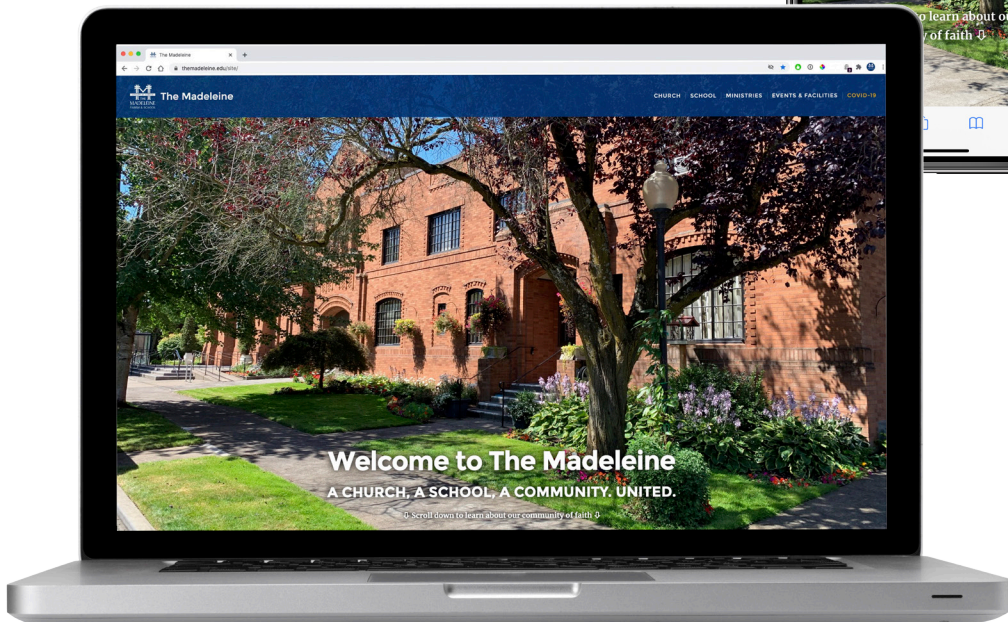
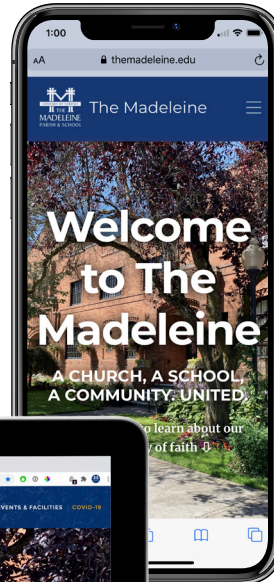
Beyond improving on the antiquated design and functionality of the old site, the new site offers more than a new design—it offers many new features, including:

- ▶ Unlike our old site, the new site is responsive, meaning it will automatically adapt to computer browsers, tablets or phones.
- ▶ We have moved all the information from the old site into the new site, and will be adding more and more as we go. The new site is much easier to add information to...and hopefully for you to navigate!
- ▶ The site is divided into 4 sections...Church, School, Ministries, and Events & Facilities... each with its own “landing page” to highlight important information about that section.
- ▶ Every section of the site is accessible from every other page in the site.
- ▶ All the special web addresses we've publicized over the years for the bulletin, Mass signups, photo uploads, and many others, will work as they did before.

A few notes

- ▶ We've tried to map (forward) all pages of the old site to the corresponding pages on the new site...so if you have a link to a page on the old site, you should be transferred to the new site. However, some web browsers are more aggressive in caching (retaining) old page information than others, so you may get sent to our error page.
- ▶ If you do get sent to the error page, you'll find a listing of all the pages on the entire website, so you should be able to get to anything you need quickly and easily.

We hope you find the new website useful! Questions? Email to matters@themadeleine.edu.



Twenty-Fifth Sunday in Ordinary Time

JESUS WAS A MASTER TEACHER. His parables inspired and they were remembered in part because they were simple stories that conveyed multiple layers of meaning. Each story seems to have a variety of possible entry points, as does today's gospel. Is the landowner truly just when he gives all the workers the same wage? We all tend to work for a wage we consider just and expect to be paid for our labor. God is a just and generous giver. When we receive what we have from God, there is no room for complaint, jealousy, or envy. God gives gifts at will. Let us die to our own sense of who is just and worthy in God's sight and leave room to be surprised by His generosity. None of us can predict the actions of God.

PRAY FOR OUR FAITHFULLY DEPARTED

Marjorie Carr	Eileen Lopez
Genny Nelson	Rosemary Wellner
Fr. Tom McCarthy	Catherine Griffin
Tamotsu Maeda	Yoshinori Uneda

PRAYER REQUESTS

For those who are ill, or in need of our prayers

Lois Kester	Carol Kolibaba
Evelyn Myrick	Clement Pereira
Brian Dooney	
Russ Clark	

WORSHIP & PRAYER

09/22, Tues.....	Marion Santos †
09/23, Weds.....	David Hulscher †
09/24, Thurs.....	Mildred Wright †
09/25, Fri.....	Colette Turina †
09/26, Sat.....	Jean Mitchell
09/27, Sun.....	William Child †

Calendar This Week

SUNDAY, SEPTEMBER 20

► Catechetical Sunday

10:00 am: Mass

► **Livestream:**

www.youtube.com/themadeleineparish

► **Printable worship aide:**

www.themadeleine.edu/worshipaide

TUESDAY, SEPTEMBER 22

New Parent Orientation

10:00 am: Adoration—Church

WEDNESDAY, SEPTEMBER 23

7:00 pm: Auction Jazzercise event

THURSDAY, SEPTEMBER 24

6:30 pm: SAC Meeting—Zoom

SATURDAY, SEPTEMBER 26

5:00 pm: Mass

► **In-Person signup:**

www.themadeleine.edu/mass

SUNDAY, SEPTEMBER 27

10:00 am: Mass

► **Livestream:**

www.youtube.com/themadeleineparish

► **Printable worship aide:**

www.themadeleine.edu/worshipaide

► **In-Person signup:**

www.themadeleine.edu/mass

ACCESSING THE MADELEINE IN TIME OF COVID-19

The Madeleine is still here and working for you. Here is how you can access some of our most common services:

► **In-person Mass:** To sign up, visit www.themadeleine.edu/mass

► **Livestream Mass:** Every Sunday at 10:00 am on our YouTube channel, www.youtube.com/themadeleineparish

► **Confession:** Call parish office for appointment

► **Parish Office hours:** The parish office is open weekdays 10 am to 2 pm.

► **Adoration:** Every Tuesday in the church from 10:00 am to 2:00 pm. Please visit the parish office to sign in, and then you'll be escorted to the church for proper distancing and sanitizing procedures.

► **Daily Emails:** We are sending out daily emails with devotions and reflections from Fr. Mike, Fr. Amal, parish staff and parishioners. If you're not receiving our emails, visit



RESCHEDULED: SEASON OF CREATION MASS AND ROSARY

Mass: September 30, 6:30 pm • Rosary: October 7, 6:30 pm

The Madeleine's Laudato Si' Circle invites you to celebrate the Season of Creation with us for two special events focusing on caring for our common home—a home that is currently under great stress. Limited space is available to attend in person. For the Mass, we invite you to bring a picture or piece of nature to place at the

foot of the altar.

Pre-registration is required for anyone wishing to attend either of these events in person. As with our weekend Masses, physical distancing, face mask, and sanitation protocols will be in place for both events.

Visit www.themadeleine.edu/creation to sign up.

CELEBRATING THE SEASON OF CREATION

September 1–October 4, 2020

Building on a long history of Catholic social teaching, The Madeleine is joining Pope Francis and our Christian brothers and sisters around the world in celebrating the Season of Creation. In recognition of the bonds we share with every living creature on Earth, we are honoring this season by spending time in prayer, considering ways to inhabit our common home sustainably, and lifting our voices in the public sphere. This

year's theme, "Jubilee for the Earth," highlights our vocation to protect and nurture all life and establish the necessary balance of sustaining ecological, economic, social, and political systems. As we live in a post-COVID-19 world, we are called to imagine just and sustainable ways of living to give the Earth the rest it requires, to satisfy everyone with enough to restore habitats, and to renew biological diversity.

PREPARE FOR THE FEAST OF ST. FRANCIS!

Novena begins September 25

The feast day of Francis of Assisi is October 4. To prepare, Franciscin Media is offering nine days of reflections and prayers that will help you deepen your devotion to this great saint. Each day, from September 25 through October 3, we will offer perspectives on the life and legacy of St. Francis of Assisi. Sign up today to participate in this novena! www.bit.ly/33FE44e



FEAST OF ST. FRANCIS—PET PHOTOS WANTED!

Upload photos to www.themadeleine.edu/pets by September 30

On Sunday, October 4, we will celebrate the Feast of St. Francis, considered the Patron Saint of Animals and the Environment. We usually have a Blessing of the Animals every year on his Feast day. Since we are not able to do that in person this year, please submit ONE of your favorite pet photos to www.themadeleine.edu/pets no later than September 30.



PARISH LIVE

INTERESTED IN BECOMING CATHOLIC?

The RCIA (the Rite of Christian Initiation of Adults) is the process for welcoming adult newcomers into the Catholic Church. This year we are gathering in small groups via Zoom and periodically meeting at The Madeleine (with masks, in small groups). Contact Christi Bohmbach at rcia@themadeleine.edu for a Zoom invitation. Additional information can be found at www.themadeleine.edu/rcia

SACRAMENTAL PREP REGISTRATION OPEN

Registration for Sacramental Preparation classes are open for the 2020-21 year. Register now to stay informed on our class schedule.

For more information or questions, contact Trisha Mumm at trisha.mumm@gmail.com or 503-341-5828.

Download the registration form at www.themadeleine.edu/faithformation



Happy 95th Birthday
Georgia Leupold Marshall
September 19

MINISTRY NEWS

THE GATHERING CHANT

Why do we sing a Gathering Song (sometimes called the Gathering Chant) when Mass begins? Whether it is grand and festive, with a triumphant fanfare for brass quintet and choir as we have on Easter morning – or more subdued and introspective, as you might hear at a funeral Mass, there are certain liturgical “norms” that influence what – and how – we sing a Gathering Chant.

From an “official” standpoint, the General Instruction of the Roman Missal (or GIRM, as it is called) cites four main purposes for the Gathering Chant:

- ▶ To begin the celebration
- ▶ To foster the unity of those who have been gathered
- ▶ To “set the appropriate tone” for the liturgical season or festivity
- ▶ To accompany the procession.

The first one is obvious. While the prelude music may have started before Mass, a Gathering Song that brings together the congregation in song is the best way to mark the “official” beginning of the liturgy. In doing so, the second purpose – that is to foster unity – is also addressed. During this time, the congregation moves from “me” to “thee” – and begins to focus on the liturgy ahead as the Body of Christ rather than



individuals. The third purpose is fairly logical. Singing a song that “sets the mood or tone” helps to launch a common theme for the liturgy. Think of “O Come, O Come Emmanuel” during Advent. One immediately associates the song with the Season of Advent. Since the last purpose of the Gathering Song is to accompany the procession, it often lends itself to singing something with a solid beat and clear-cut musical phrases, rather than an endless, meandering melody. Although because of time considerations we sometimes don’t sing all the verses, the liturgical norms actually call for us to keep singing the Gathering Chant in its entirety.

Act Justly

This week’s Gathering Chant, “Act Justly” written by Bernadette Farrell, is yet another song that incorporates the teachings of Pope Francis’s “Laudato Si’; Care for Our Common Home.” This song is not yet in our Breaking Bread hymnals, however, to learn this song go to the www.ocp.org. Type in the title, and from there click on the arrow to hear the song. The words to the refrain are very sing-able. They are: Act justly, love tenderly. Walk humbly with your God.

— Maria Manzo

WEEKLY MASS TIMES

Weekend Masses:

Saturday Vigil 5:00 pm
Sunday 10:00 am

▶ Signup for in-person Mass at www.themadeleine.edu/mass

▶ Livestream 10:00 am Sunday Mass at youtube.com/themadeleineparish

Penance By appointment; Call parish office

PARISH OFFICE

Hours Monday–Friday, 10:00 am–2:00 pm

Phone: 503-281-5777 **Fax:** 503-281-0673

School Office 503-288-9197

PARISH STAFF

Rev. Mike Biewend—Pastor
fathermike@themadeleine.edu ext. 11

Father Amalraj Rayappan—Priest

Deacon Mike O’Mahoney—Permanent Deacon
deaconmike@themadeleine.edu

Carol Glasgow—School Principal
cglasgow@themadeleine.edu 503-288-9197

James Wurzer—Business Manager
jwurzer@themadeleine.edu ext. 18

Darlene Maurer—Pastoral Assistant
dmaurer@themadeleine.edu ext. 25

Therese Fenzl—Director of Spiritual Ministries
tfenzl@themadeleine.edu ext. 16

Maria Manzo—Director of Music
mmanzo@themadeleine.edu ext. 13

Jackie Dooris—Events Manager
jdooris@themadeleine.edu ext. 17

Nadia Stickney—Bookkeeper
nstickney@themadeleine.edu ext. 14

Mary Prusso—Registration/Special Events
mprusso@themadeleine.edu ext. 12

Janeen Reilly—Parish Administrator
jreilly@themadeleine.edu ext. 10

Sr. Annemarie Rotter—Office Assistant

Terry Silva—Facilities Support
tsilva@themadeleine.edu ext. 17

Rich Hammons—Director of Communications
rhammons@themadeleine.edu ext. 29

SACRAMENTS

Marriages, Funerals, Anointing of the Sick—Fr. Mike ext. 11

Infant Baptism—Darlene Maurer ext. 25

First Reconciliation, First Eucharist—Trisha Mumm ext. 27

RCIA—Christi Bohmbach, rcia@themadeleine.edu

Confirmation—Fr. Mike ext. 11

COUNCILS & CONTACTS

Pastoral Council—Ron Oliver 503-281-9070

Finance Council—Jim Jones 503-284-3301

Buildings & Grounds—Erin Couch 503-281-9575

School Advisory—Catherine Glavan, 503-875-4679

Facility Requests—themadeleine.edu/facilities

Maintenance Requests—James Wurzer
jwurzer@themadeleine.edu ext. 18

Bulletin submissions due 5:00 pm Monday

Email to bulletin@themadeleine.edu
Visit www.themadeleine.edu/ministries
▶ Committees & councils ▶ Ministers’ schedules

Season of Creation

2020 Prayer

Creator of Life,

At Your word, the Earth brought forth plants yielding seed and trees of every kind bearing fruit. The rivers, mountains, minerals, seas and forests sustained life.

The eyes of all looked to You to satisfy the needs of every living thing. And throughout time the Earth has sustained life. Through the planetary cycles of days and seasons, renewal and growth, you open your hand to give creatures our food in the proper time.

In your Wisdom, you granted a Sabbath; a blessed time to rest in gratitude for all that you have given; a time to liberate ourselves from vicious consumption; a time to allow the land and all creatures to rest from the burden of production.

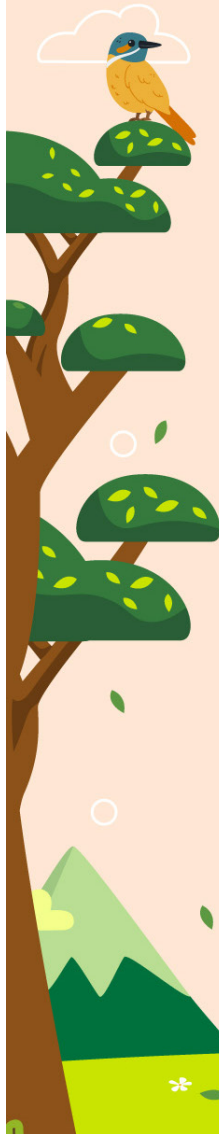
But these days our living pushes the planet beyond its limits. Our demands for growth, and our never-ending cycle of production and consumption are exhausting our world.

The forests are leached, the topsoil erodes, the fields fail, the deserts advance, the seas acidify, the storms intensify. We have not allowed the land to observe her Sabbath, and the Earth is struggling to be renewed.

During this Season of Creation, we ask you to grant us courage to observe a Sabbath for our planet. Strengthen us with the faith to trust in your providence. Inspire us with the creativity to share what we have been given. Teach us to be satisfied with enough. And as we proclaim a Jubilee for the Earth, send Your Holy Spirit to renew the face of creation.

In the name of the One who came to proclaim good news to all creation, Jesus Christ.

Amen.



COMMUNITY

NATIONAL DAY OF PRAYER & FASTING

September 24

Inspired by the need for societal healing and personal conversion of hearts, the ACTS XXIX team is calling for a National Day of Prayer and Fasting on Thursday, September 24, 2020. This idea springs in part from the fact that President Lincoln on three occasions called the entire nation to fast and pray for God's mercy on our land. It seems to be a propitious opportunity to call all people of good will to "ask God for what only God can do." Click here for more information: www.bit.ly/35PWYI4

WORLDWIDE MARRIAGE ENCOUNTER

To apply for YOUR WWME Experience or search other dates go to rediscoverthepark.org. For information about WWME call 503-853-2758 or by email at reservations@rediscoverthepark.org

DOES YOUR MARRIAGE NEED A TUNE UP?

Or even a major overhaul? Sometimes a marriage can run along fine and then things change. They may need your time and attention.

Sometimes lines of communication break down and they need repair. Sometimes our focus moves away from our marriage and family and needs a little redirection. Sometimes a fair or average marriage is just not enough. Have you ever thought to yourself, "How can I make my marriage better?" If so, Retrouvaille can help. Retrouvaille is marriage program for couples whose marriage has become off course. It begins with a weekend program that can help get your relationship back on track. It is an effective program that has worked for thousands of couples and it can work for your marriage.

For confidential information about or to register for the program beginning with a weekend on October 2-4, 2020, call 1-503-225-9191 or email: portland@retrouvaille.org or visit www.helpourmarriage.org



Join us for the
**14th Annual Rosary Bowl:
A Marian and Eucharistic
Celebration**

Details at:
www.rosarybowlnw.org

SAVE THE DATE:

Saturday Oct. 3rd

- Live Stream
- Radio Broadcast and
- In-Person at: St. Edward Church, Keizer, OR 8-10:30am

Ministries and friends: now that the bulletin has restarted, feel free to send your news and updates to bulletin@themadeleine.edu. Please send by Tuesday, 5:00 pm for the following week's bulletin.

“The wildfires across the state of Oregon have been devastating to all of us, especially during this pandemic and time of civil unrest. I commend all our Catholic parishes that have already assisted those evacuated and encourage others to help our neighbors and friends however they can.

Please join me in praying for all those affected as well as an end to these natural disasters.”

Archbishop Alexander Sample,
Archdiocese of Portland in Oregon

Sept. 10, 2020



WILDFIRE RESPONSE

Many of you have asked how to help those affected by the wildfires that have ravaged our state. These fires, combined with the hardships of the coronavirus pandemic, continue to pose grave threats to those who are vulnerable to poverty and homelessness—and to the stability and self-sufficiency they have fought so hard to achieve. There are many options to respond financially. Two are listed here:

- ▶ **Catholic Charities**—donate online at CatholicCharitiesOregon.org
- ▶ **Archdiocese of Portland Wildfire Relief Fund**—osd.archdpdx.org/wildfire-relief

Educating Minds • Nurturing Faith • Creating Leaders



CATHOLIC HIGH SCHOOLS WELCOME YOU SE HABLA ESPAÑOL

LA SALLE CATHOLIC COLLEGE PREPARATORY

**OPEN HOUSE
OCTOBER 4**

11999 SE Fuller Road
Milwaukie, OR 97222
Isprep.org
503.353.1413

JESUIT HIGH SCHOOL

**OPEN HOUSE
OCTOBER 11**

9000 SW Beaverton-
Hillsdale Hwy
Portland, OR 97225
jesuitportland.org
503.291.5423

CENTRAL CATHOLIC HIGH SCHOOL

**OPEN HOUSE
OCTOBER 18**

2401 SE Stark Street
Portland, OR 97214
centralcatholichigh.org
503.230.1056

DE LA SALLE NORTH CATHOLIC HIGH SCHOOL

**OPEN HOUSE
OCTOBER 24**

7528 N Fenwick Avenue
Portland, OR 97217
delasallenorth.org
503.285.9385 x140

VALLEY CATHOLIC HIGH SCHOOL

**OPEN HOUSE
OCTOBER 25**

4275 SW 148th Avenue
Beaverton, OR 97078
valleycatholic.org
503.520.4721

ST. MARY'S ACADEMY

**OPEN HOUSE
NOVEMBER 1**

1615 SW 5th Avenue
Portland, OR 97201
stmaryspdx.org
503.228.8306

Most events will be virtual. Please check each school's website for details.



Join us for Mass every Sunday at 10:00 am

Mass livestreams on our YouTube channel every Sunday at 10:00 am. Visit www.youtube.com/themadeleineparish. If you're using the YouTube app on your phone, tablet or smart TV app, search for "The Madeleine Parish."

Livestream backup help needed

Are you comfortable with OBS and YouTube Live, or have livestream production experience? If yes, we'd love backup help to produce Mass livestreams every now and then. Interested? Contact Rich Hammons, rhammons@themadeleine.edu.

Timmco

INSURANCE, INC.

Brian Timm
Susan Ames | Derek Ames
1615 NE Broadway | 503-288-8818
www.timmco.com

AUTO | HOME | BUSINESS | LIFE



Sweetly Aimee, LLC
Custom Wedding and All-Occasion Cakes and Desserts
Aimee Holzschuh
Parishioner & Parent
503.998.7368
www.SweetlyAimee.com

TIM WALTERS

Principal Broker



The most trusted name in Real Estate!
Committed to the NE Portland Neighborhoods
27+ years of experience



503-495-5780 | TimWaltersRealtor@Gmail.com | TimWaltersPC.com

CITY HOME IMPROVEMENT, Inc.

Kitchens | Bathrooms | Additions
Since 1956

Please visit our showroom or call for a free in-home estimate

503-253-7591

www.cityhomeimprovementinc.com
8811 NE Sandy Blvd. Portland, OR 97220



Mark McGinnis

Parishioner, Parent
Mortgage Advisor
NMLS 98586
971-300-0484
mark.mcginis@spmc.com
"It's about service!"



JOHN M. WYNN
ATTORNEY AT LAW
McGill, Kapranos & Wynn
Parishioner
Hollywood Square, 1827 NE 44th Ave., Suite 200
jmwpx@qwestoffice.net • 287-7333

PAUL MARRS
MORTGAGE BANKER | CO.NMLS 1169
503 781 2114 | MLO-5212
PREMIER MORTGAGE RESOURCES

LANCE MARRS
PRINCIPAL BROKER
503 701 5323
LIVING ROOM REALTY

JOSÉ MESA AUTO WHOLESALE, LLC
"The mobile auto dealer who is always in your neighborhood."
YOUR DISCOUNT AUTO RETAILER SINCE 1992!
sales@josemesa.com 503-789-0438 www.josemesa.com
NEW • USED • BUY • SELL • LEASE • TRADE • CONSIGN • BROKER • APPRAISE

ADVERTISE YOUR BUSINESS HERE!
Contact Nadia Stickney, nstickney@themadeleine.edu

Dr. Phil Doleac, PC
Orthodontics for all ages
www.magic-smiles.com
Beaverton 503.644.7009 | Portland 503.255.1694 | Scappoose 503.543.4488

NEW AD COMING SOON

THEORY MORTGAGE
Beating Banks Daily
Brian DuVal
503-850-7667
NMLS 5912, NMLS 1848246

METROPOLITAN PEDIATRICS
www.metropediatrics.com
Karen Lickteig, M.D.
1130 NW 22nd • Portland • 503-295-2546
Richard Barsotti, M.D.
9300 SE 91st • Portland • 503-261-1171

ANNE C. STEINER
ESTATE PLANNING
ELDER LAW ATTORNEY
503.946.8361 • 1717 NE 42nd Ave., Suite 2104
PARISHIONER - anne.c.steiner@gmail.com
WILLS - TRUSTS - PROBATE
GUARDIANSHIP - CONSERVATORSHIP

JOHN W. LOBO PAINTING
Custom Interior & Exterior
Creative Finishes
503-969-3337 CCB#89027
Licensed Bonded Insured

NEW AD COMING SOON

Dr. John R. Lewis
Beaumont Vision
Stop by to view our unique eyewear
Most insurances accepted
4331 NE Fremont St
Ph: 503-331-3937

ADVERTISE YOUR BUSINESS HERE!
Contact Nadia Stickney, nstickney@themadeleine.edu

PAUL MYERS, Ph.D., LLC
PSYCHOTHERAPY, COUNSELING & CONSULTING SERVICES
(503) 381-6685 paulmyersphdpdx@gmail.com
www.paulmyersphdpdx.com

Ashley
REALTY WORKS TEAM
PARISHIONERS, NEIGHBORS, EXPERT REALTORS

Wick & Karoline Ashley
karoline@ashleyrealtyworks.com
(503) 819-4851
237 NE Broadway Suite 100
RE/MAX equity group

T.C. O'LEARY'S
a little irish
PUB
WEEKEND BRUNCH
LIVE MUSIC MONDAYS & FRIDAYS
OUTDOOR SEATING
WHISKEY CLUB
RED SOX GAMES
AVAILABLE FOR PRIVATE EVENTS
Come for brunch after Mass!
Parishioners
Tom, Siobhan
& Aine O'Leary
2926 NE
Alberta
503-477-5969

WILLAMETTE FINANCIAL ADVISORS, LLC
PERSONALIZED ADVICE FROM TRUSTED ADVISORS
James M Jones
Financial Advisor, CFP®
Parishioner
Direct 503.284.9200
Office 503.7470306
jimj@wfinadv.com

Nathalie Pillsbury
Parishioner
office | 503.245.0685
www.roloffconstruction.com

Michael Dooney Real Estate Broker
(503) 772-1127
dooney@windermere.com
www.mdooney.com

Retrouvaille
A Christian Peer Ministry
A LIFELINE FOR HURTING MARRIAGES
Is your marriage tearing you and your family apart?
Weekends held every February, June & October at Mt. Angel Retreat Home
www.helpourmarriage.com
503-704-7382
Donated by Kevin & Carol McMenamin

ROLOFF Construction
General Contractors | REMODELING | ADDITIONS | KITCHENS | BATHROOMS | DECKS | CCB 140721

Windermere REAL ESTATE
Windermere Stellar
Dedicated to exceeding your expectations.